

CREDIT CARD BUSINESS IN NEPAL

By:

MANDIRA KHAREL

Roll No.: 511/064

T.U. Reg. No: 7-2-256-135-2004

Shanker Dev Campus

A Thesis Submitted to:

Office of the Dean

Faculty of Management

Tribhuvan University

In Partial fulfillment for the requirement of the Degree of
Master of Business Studies (M.B.S.)

Kathmandu, Nepal

2011

RECOMMENDATION

This is to certify that the Thesis

Submitted by

MANDIRA KHAREL

Entitled

CREDIT CARD BUSINESS IN NEPAL

has been prepared as approved by this Department in the prescribed format of Faculty of Management, Tribhuvan University. This thesis is forwarded for examination.

.....

Sneha Lata Kafle
(Supervisor)

.....

Prof. Bisheshwor man Shrestha
(Head of Research Department)

.....

Prof. Dr. Kamal Deep Dhakal
(Campus Chief)

Date:.....

VIVA VOCE SHEET

We have conducted the viva-voce examination of the thesis presented by

MANDIRA KHAREL

Entitled

CREDIT CARD BUSINESS IN NEPAL

and found the thesis to be the original work of the student and written according to the prescribed format. We recommend the thesis to be accepted as partial fulfillment of the requirement for Master's Degree in Business studies (M.B.S.)

Viva-voce Committee

Head of Research Department:

Member (Thesis supervisor):

Member (External Expert):

Date:- / /

DECLARATION

I hereby declare that the work reported in this thesis entitled **Credit Card Business In Nepal** submitted to Shanker Dev Campus, Faculty of Management, Tribhuvan University, is my original work done in the form of partial fulfillment of the requirement for the Master's Degree in Business Studies (M.B.S.) under the supervision of **Sneha Lata Kafle** of Shanker Dev Campus, Tribhuvan University.

.....

Researcher

Mandira Kharel

Roll No.: 511/064

T.U. Reg. No: 7-2-256-135-2004

Shanker Dev Campus

ACKNOWLEDGEMENTS

This is really an appreciable curriculum of T.U. because it helps the students to express their theoretical concept gained during the study period into the practical field. So, being concerned to thesis, I have also got a chance to express my theoretical concept gained from class and library study into this practical field. The present study **Credit Card Business in Nepal** has been prepared for the partial fulfillment of the requirement for Master Degree in Business Studies.

At first I would like to pay thanks to my father and mother as well as my family who headed me towards the light of education and path of truth. Use to their nonstop ping effort for guidance, today I come in this position. So I would like to share the credit of my success with them. I'm really indebted by them. After this, I would like to express my cordial gratitude to my all teachers. For this dissertation, I would like to pay my sincere thanks to my thesis advisor **Sneha Lata Kafle** Lecturer, Shanker Dev Campus. Their incessant suggestion and guidance from the beginning to the end is really an appreciable effort.

I would also like to express my gratitude to all other members of Shanker Dev Campus, library staffs who supported as well as inspired me to complete this thesis. Similarly I am very grateful to all the staffs of Nabil bank, HBL, and SCBNL for providing me sufficient materials and suggestions. Last but not the least I am greatly indebted by my all friends and family members. In this regard, I'm grateful to my friend **Sunita Dhakal** for their motivational effort and support even though they have very busy hour. Advices, Recommendations and suggestions are wholeheartedly welcomed.

Thanks.

.....

Researcher

Mandira Kharel

Roll No.: 511/064

T.U. Reg. No: 7-2-256-135-2004

Shanker Dev Campus

ABBREVIATIONS

AMEX	:	American Express
ATM	:	Automatic Teller Machine
ATS	:	Alpine Travel Services Pvt. Ltd.
C.V.	:	Coefficient of Variation
FIR	:	First Individual Report
GDP	:	Gross Domestic Product
HBL	:	Himalayan Bank Ltd.
JCB	:	Japan Credit Bureau
MSF	:	Merchant Service Fee
NABIL	:	Nabil Bank Ltd
NIB	:	Nepal Investment Bank Ltd.
NRB	:	Nepal Rastra Bank
PIN	:	Personal Identification Number
POS	:	Point of Sale
PSA	:	Premium Savings Account
S.D	:	Standard Deviation
SCBNL	:	Standard Chartered Bank Nepal Ltd.
SCT	:	Smart Choice Technology
SWOT	:	Strength, Weakness, Opportunity and Threat
USA	:	United States of America

TABLE OF CONTENTS

Recommendation	
Viva-Voice Sheet	
Declaration	
Acknowledgement	
List of Abbreviation	
Table of Contents	
List of Table	
List of Figure	

CHAPTER - I

Page

No. Introduction

1.1	Background of the Study	1
1.2	Meaning and Origin of Bank	3
1.2.1	Historical of Credit Cards in Nepal	8
1.2.2	Role of Joint Venture Banks in Nepal	9
1.3	Focus of the Study	11
1.4	Statement of the Problem	11
1.5	Objectives of Study	12
1.6	Importance of the Study	12
1.7	Limitation of the Study	13
1.8	Organization of the Study	14

CHAPTER - II

Review of Literature

2.1	Conceptual Reviews	15
2.1.1	Payment Card	15
2.1.2	Types of Credit Card	16
2.1.3	Transaction Process	17

2.1.4	Credit Card	18
2.1.5	Debit Card	19
2.1.6	Charge Cards	19
2.1.7	Chip /Smart cards	19
2.1.8	Premium Cards	20
2.1.9	VISA Cards	20
2.2	<i>Master Cards</i>	21
2.2.1	<i>Advantages and Disadvantages of Credit cards</i>	23
2.2.2	<i>Parties Involved in Credit Card Business</i>	24
2.2.3	<i>Components of Credit Card</i>	25
2.2.4	<i>Basic Eligibility Criteria for Being a Card Holder</i>	27
2.2.5	<i>Documents Required</i>	27
2.2.6	<i>Application Processing</i>	29
2.2.7	<i>Transaction Process of Credit Cards</i>	30
2.2.8	<i>Risk and Fraud in Card Business</i>	31
2.2.9	<i>Risk Minimize Mechanism</i>	34
2.2.10	<i>Procedures following Disputes</i>	36
2.3	Review of Related Studies	40
2.4	Unpublished Thesis	41
2.5	Research Gap	44

CHAPTER - III

Research Methodology

3.1	Research Design	46
3.2	Population size and sample Unit	46
3.3	Sampling Procedure.	46
3.4	Sources of Data	46
3.5	Data Collection Procedure	47
3.6	Methods of Data presentation and Analysis	49
3.7	Statistical Tools Used	49

CHAPTER - IV

Data Presentation and Analysis51

- 4.1 User Trend of Credit Card Business51
- 4.2 Merchant Trend of Credit Cards Business53
- 4.3 Present Market Share Hold by Different Banks56
- 4.4 Trend Analysis59
- 4.5 Result Section of Questionnaire60
- 4.6 Major Findings77

CHAPTER - V

Summary, Conclusion and Recommendations

- 5.1 Summary82
- 5.2 Conclusions85
- 5.3 Recommendation85

Bibliography

Appendix

LIST OF TABLE

- Table 4.1 User Trend of Credit Card Business51
- Table 4.2 Merchant Trend of Credit Card Business53
- Table 4.3 Forecasted user Trend of Credit Card Business55
- Table 4.4 Correlation Analysis of NABIL Bank57
- Table 4.5 Correlation Analysis of HBL58
- Table 4.6 Correlation Analysis of SCBNL58
- Table 4.7 Projected Values of Different Banks for the Year 2008/200959

LIST OF FIGURE

- Figure 4.1 User Trend of Credit Card Business of Nepal52
- Figure 4.2 User Trend of Industry52
- Figure 4.3 Merchant Trend of Credit Card Business54
- Figure 4.4 Merchant Trend of Industry54
- Figure 4.5 Forecasted user Trend of Credit Card 55
- Figure 4.6 Market share of banks in terms of number of cardholders for the Year 2008/0956
- Figure 4.7 Market share of banks in terms of merchant hold for the Year 2008/0957
- Figure 4.8 Trend Values of Different Banks59
- Figure 4.9 Gender Distribution of Customers Gender Composition60
- Figure 4.10 Age Distribution of Customers60
- Figure 4.11 Education Level of Customers61
- Figure 4.12 Types of Cards61
- Figure 4.13 Cards Acquired of Different Banks62
- Figure 4.14 Reasons for Acquiring Credit Card62
- Figure 4.15 Places of Usage of Credit Card63
- Figure 4.16 Appropriate Media63

Figure 4.17	Level of Satisfaction	64
Figure 4.18	Satisfaction in Limit made by Bank	64
Figure 4.19	Expenses through Credit Card	65
Figure 4.20	Problems Encountered	65
Figure 4.21	Types of Problems Encountered	66
Figure 4.22	Knowledge on Card Frauds	66
Figure 4.23	Incentive to Change Cards	67
Figure 4.24	Supplementary Card Users	67
Figure 4.25	Types of Cards Used by Customers	68
Figure 4.26	POS Machines	69
Figure 4.27	Reasons for Selecting Banks	69
Figure 4.28	Bank of Card Holders	70
Figure 4.29	Benefits Received	70
Figure 4.30	Percentage of Credit Card Sales	71
Figure 4.31	Change in Buying Habit	71
Figure 4.32	Level of Satisfaction	72
Figure 4.33	Sample Size Composition	73
Figure 4.34	Merchants using Credit Cards	73
Figure 4.35	Types of Card Accepted	74
Figure 4.36	Acquiring Bank	74
Figure 4.37	Reasons for Selection	75
Figure 4.38	Influences to Use Card	75
Figure 4.39	Frequencies of Credit Card Users	76
Figure 4.40	Reasons for Not Providing Card Facility	76
Figure 4.41	Response of Customer	77

CHAPTER – I

INTRODUCTION

1.1 Background of the Study

Nepal is one of the developing countries in the world. The economic growth rate of Nepal is very low and the economic development seems to be much sluggish in comparison to other developing countries. In spite of being rich in natural resources, due to lack of proper management and inadequate capital, such resources have not been utilized properly. Hence the development of Nepalese economy is lagging behind. The economic standard of nation determines the life style of the people. Hence the developing countries like Nepal must pay due attention and make greater effort to uplift economic state of affairs. It is most necessary to carry out the various development steps in various sectors by developing countries.

The development of economy basically depends upon the development of financial sectors. Banking sector is the main element of any financial sectors. So banking sector is also known as backbone of economy, because it helps to formulate capital by collecting scattered amount among people and invest in different infrastructure like transportation, health and other basic needs of development in which private sector does not want to invest. That is why banking sector is a platform through which scattered saving and scares resources can be transferred from the idle sector into productive sectors. This ultimately helps to uplift the economic development of the country. So Nepal needs to emphasize banking among its people in this modern era. Further in this modern century, banking business transaction and personal life have become advanced in Nepal too, so nowadays to make easy business transaction, various types of equipments and new techniques are introduced. As a result of this banking sectors and financial institution provide non banking service beside instructed banking service to move towards modernization Previously, people used goods for goods to exchange necessary things that they need to survive but it is very difficult to measure and pay through barter system. That is why money was introduced. Money makes exchange system easy. But at the same time even money is inconvenient because it is uncomfortable to carry huge amount to pay large bills, difficult to protect from theft and pick picketer and some other drawbacks. So that nowadays, different payments

systems have evolved, especially after the revolution in information technology. The growth of technology has changed the payment systems world over during the past two decades. More and more innovations are being introduced in both cash payment systems and non-cash payment systems. Cash in the form of notes and coin was the principal method of payment system before the introduction of "Banking". Paper instruments such as "Cheques" and „Credit Transfer“ now have become a part of the payment system with the popularity of banking. With the introduction and implementation of recent technology in banking, electronic devices are making the job of cash payment as well as non-cash payments easy and efficient.

The introduction of Automatic Teller Machine (ATMs) and the Plastic Cards has given the banking customers the facility of round the clock (24 hours) banking.

In modern day commerce, Credit cards have acquired a fairly prominent and pervasive role. With the increasing use of the credit cards, the society is moving towards cashless transactions. It is one of the highly used and convenient forms of electromagnetic cards that are nowadays available. It has helped to eliminate drawbacks of cash payment system and made life easy and tension free. Credit card is one of the most popular forms of payment of consumer goods services. Generally a bank enters into an agreement with its customer and issues the customer a credit card. Credit card is a small plastic card around 8.5cm by 5.5 cm having a magnetic stripe, issued by a bank and financial institution which allows the holder to buy goods or services on credit. It has the name and the account number of the holder embossed on it. In addition, the date up to which the card is valid will also be embossed and a specimen signature panel on the reverse. The card issuer should normally get the card holder to sign in the specimen signature panel in his presence before parting with the credit card. The limit up to which the card holder can make purchases in a month is also informed to the card holder, this limit is called the card-limit. Credit card is a very convenient way of making purchase on credit without carrying cash. The way a normal credit card works is that the cardholder purchase goods by using his /her credit card and the concerned bank pays bill in the behalf of card user to the merchant, which provides the product and services. The bank charges certain percentage from the merchant in return for processing the

transaction by paying the purchased amount less banks commission to the merchant's account.

From the customers side he is given a loan for that amount, generally the bank gives monthly statement of cardholder's expenses, but the date of statement issue may be different from one bank to another bank. The cardholder will have to pay that amount within the time period given by the bank. If the cardholder does not want to pay the full amount he can pay minimum (printed on the monthly statement) or 5 percent of total expense whichever is high within 15 days of statement issued. Many card issuers being banks also allow withdrawals of cash for emergency purposes and levy a service fee for such withdrawals. Many banks also have credit cards which double up as ATM cards.

1.2 Meaning and Origin of Bank

A bank is an organization, the major function of which is to deal in money and credit. The main business of a bank is to pool the scattered idle deposits in the public and channel it for productive use. It collects deposits and invests or lends to those who stand in need of money. Bank, in other words, is a custodian of money received from the depositors. Hence, its responsibility towards the general public is pretty different than those who are involved in other types of trades and services. Modern day banks exhibit the trait more of a department store with a wide range of financial products to offer.

Banks can be a person, a company or a firm, with a place of business, and must be involved in credit creation .The business of a modern day bank however is not only confined in borrowing deposits and lending advances only, it performs a host of other financial activities which has immensely contributed to achieve industrial and commercial progress of every country.

Sayors defined the bank as “Ordinary banking business consists of changing cash for deposits and bank deposit for cash ,transferring bank deposits from one person or corporation to another ,giving bank deposits in exchange of bills of exchange, government bonds, the secured or unsecured promises of business to repay etc.”

According to US Law, “any institution offering deposits subjects withdrawal on demand and making laws of a commercial or business nature is a bank. So, banks are those institutions that offer the widest range of financial services especially credit, saving and payment services and perform the widest range of financial functions of any business firm in the economy.

There are various concepts among the economists about the origin of banking practices and the word “Bank” itself. The Lombards, who were originally from the plains of Lombardy of Northern Italy, introduced banking practice to England. These Lombards brought this business to the city of London and their home, the Lombard street, is still the center of British banking .The Lombards, after a century or so of business in London ,were eventually bankrupted because they lent money to kings who did not repay them.

After the Lombards, the goldsmith practiced banking sideline with their normal operation in the bullion and jewelry fields. The early goldsmiths used to have large vaults , which were soundly built and heavily guarded .The person who deposited his surplus funds with the goldsmith became as a „Depositor and naturally paid for the privilege of having his money defended this way. These payments were called "Bank Charges". The depositors who needed funds to pay wages or debts, could call at the bank and collect such sums as required.

In the east, it is believed that banking was practiced at the time of "manu" as it is referred in "Manusmriti". There is an opinion that it was practiced during Chanakya's too, as banking has been mentioned in Kautilya's "Arthasastra", which is the first book on economics. In the west, the history of banking begins in ancient Greece, Rome and Mesopotamia. The history of modern banks begins from Bank of Venice established in 1157 A.D., Bank of Barcelona established in 1401, Bank of Genoa established in 1407, Bank of Amsterdam established in 1609 and Bank of England, which was established in 1694.The ancestors of modern day banks have been attributed to the merchants, the goldsmiths and the money- lenders.

Though there is much controversy as to the origin of the word “Bank”, some believe that it originated from the Latin word "Bancus" meaning a bench. Similarly, some believe that it

originated from the French word "Banque" and some to Italian word "Banca" all meaning a bench .Some have stronger belief that it originated from the German word "Banck" meaning collective fund. Ancient money dealers used to deal on a bench. Sometimes when the money dealers failed to meet the depositor's claim, the depositors used to break the dealer's bench from which the word "Bankruptcy" seems to be derived.

Nabil Bank Limited (NABIL)

Nabil Bank Limited, the first foreign joint venture bank of Nepal, started operations in July 1984. Nabil was incorporated with the objective of extending international standard modern banking services to various sectors of the society. Pursuing its objective, Nabil provides a full range of commercial banking services through its 40 points of representation across the kingdom and over 170 reputed correspondent banks across the globe.

Nabil, as a pioneer in introducing many innovative products and marketing concepts in the domestic banking sector, represents a milestone in the banking history of Nepal as it started an era of modern banking with customer satisfaction measured as a focal objective while Doing business.

Operations of the bank including day-to-day operations and risk management are managed by highly qualified and experienced management team. Bank is fully equipped with modern technology which includes ATMs, credit cards, state-of-art, world-renowned software from Infosys Technologies System, Banglore, India, Internet banking system and Telebanking system.

Standard Chartered Bank Limited (SCBNL)

Standard Chartered Bank Nepal Limited has been in operation in Nepal since 1987 when it was initially registered as a joint-venture operation. Today the Bank is an integral part of Standard Chartered Group having an ownership of 75% in the company with 25% shares owned by the Nepalese public. The Bank enjoys the status of the largest international bank currently operating in Nepal.

Standard Chartered has a history of over 150 years in banking and operates in many of the world's fastest-growing markets with an extensive global network of over 1750 branches

(including subsidiaries, associates and joint ventures) in over 70 countries in the Asia Pacific Region, South Asia, the Middle East, Africa, the United Kingdom and the Americas. As one of the world's most international banks, Standard Chartered employs almost 75,000 people, representing over 115 nationalities, worldwide. This diversity lies at the heart of the Bank's values and supports the Bank's growth as the world increasingly becomes one market.

With 18 points of representation, 23 ATMs across the country and with more than 350 local staff, Standard Chartered Bank Nepal Ltd. is in a position to serve its customers through an extensive domestic network. In addition, the global network of Standard Chartered Group gives the Bank a unique opportunity to provide truly international banking services in Nepal.

Standard Chartered Bank Nepal Limited offers a full range of banking products and services in Consumer banking, Wholesale and SME Banking catering to a wide range of customers encompassing individuals, mid-market local corporates, multinationals, large public sector companies, government corporations, airlines, hotels as well as the DO segment comprising of embassies, aid agencies, NGOs and INGOs.

The Bank has been the pioneer in introducing 'customer focused' products and services in the country and aspires to continue to be a leader in introducing new products in delivering superior services. It is the first Bank in Nepal that has implemented the Anti-Money Laundering policy and applied the 'Know Your Customer' procedure on all the customer accounts.

Corporate Social Responsibility is an integral part of Standard Chartered's ambition to become the world's best international bank and is the mainstay of the Bank's values. The Bank believes in delivering shareholder value in a socially, ethically and environmentally responsible manner. Standard Chartered throughout its long history has played an active role in supporting those communities in which its customers and staff live. It concentrates on projects that assist children, particularly in the areas of health and education. Environmental projects are also occasionally considered. It supports non-governmental organizations involving charitable community activities. The Group launched two major

initiatives in 2003 under its 'Believing in Life' campaign- 'Living with HIV/AIDS' and 'Seeing is Believing'.

Himalayan Bank Limited

Himalayan Bank was established in 1993 in joint venture with Habib Bank Limited of Pakistan. Despite the cut-throat competition in the Nepalese Banking sector, Himalayan Bank has been able to maintain a lead in the primary banking activities- Loans and Deposits.

Legacy of Himalayan lives on in an institution that's known throughout Nepal for its innovative approaches to merchandising and customer service. Products such as Premium Savings Account, HBL Proprietary Card and Millionaire Deposit Scheme besides services such as ATMs and Tele-banking were first introduced by HBL. Other financial institutions in the country have been following our lead by introducing similar products and services. Therefore, we stand for the innovations that we bring about in this country to help our Customers besides modernizing the banking sector. With the highest deposit base and loan portfolio amongst private sector banks and extending guarantees to correspondent banks covering exposure of other local banks under our credit standing with foreign correspondent banks, we believe we obviously lead the banking sector of Nepal. The most recent rating of HBL by Bankers' Almanac as country's number 1 Bank easily confirms our claim.

All Branches of HBL are integrated into Globus (developed by Temenos), the single Banking software where the Bank has made substantial investments. This has helped the Bank provide services like 'Any Branch Banking Facility', Internet Banking and SMS Banking. Living up to the expectations and aspirations of the Customers and other stakeholders of being innovative, HBL very recently introduced several new products and services. Millionaire Deposit Scheme, Small Business Enterprises Loan, Pre-paid Visa Card, International Travel Quota Credit Card, Consumer Finance through Credit Card and online TOEFL, SAT, IELTS, etc. fee payment facility are some of the products and services. HBL also has a dedicated offsite 'Disaster Recovery Management System'. Looking at the number of Nepalese workers abroad and their need for formal money transfer channel; HBL has developed exclusive and proprietary online money transfer software- Himal Remit ATM. By deputing our own staff with technical tie-ups with local

exchange houses and banks, in the Middle East and Gulf region, HBL is the biggest inward remittance handling Bank in Nepal. All this only reflects that HBL has an outside-in rather than inside-out approach where Customers' needs and wants stand first.

Corporate Social Responsibility (CSR) holds one of the very important aspects of HBL. Being one of the corporate citizens of the country, HBL has always promoted social activities. Many activities that do a common good to the society have been undertaken by HBL in the past and this happens as HBL on an ongoing basis. Significant portion of the sponsorship budget of the Bank is committed towards activities that assist the society as large.

1.2.1 Historical of Credit Cards in Nepal

Credit card is generally associated with a financial institution or bank. However, the history of credit card business in Nepal is associated with a travel agency named Alpine Travel Services private limited (ATS). ATS first obtained the license from VISA and MasterCard International in 1985 A.D. as the representative of the chase Manhattan Bank, NA Singapore. It was horsed to sign up merchant establishment to the various outlets. Now, Alpine accepts credit card service from more than 2000 merchants all over the country. From its association with the chase Manhattan Bank, Singapore and then in 1993 with the Overseas Union Bank Ltd, Credit Card in Nepal has come a long way. After ATS, Nepal Grindlays Bank Limited, NGBL, (later named Standard Chartered Bank Limited, SCBL) also entered credit card acquiring market in 1989 with Visa and NABIL acquired Master Card. Later, NGBL acquired Master Card in 1990A.D. and JCB in 1992 A.D. It was the Himalayan Bank Limited and NABIL to start the issue of cards in Nepal for the first time in November 1993 A.D. NABIL issued Master Card whereas HBL entered the credit card issuing business with its typical local proprietary card branding "HBL Regular" which is the Nepal's first ever (domestic) Credit Card. In December 1997, HBL improved its technology to issue HBL Gold Card which was more reliable and safe. These cards become very popular in Nepalese general public, especially in the Katmandu valley. But now HBL Gold is not issuing because of manipulation problem. Himalayan Bank Ltd started to acquire international credit card (Visa) only since 1996. Likewise NGBL started issuing Visa and Master Card in April 1997 A.D. and July 1998 A.D.

This brought about competition in small credit card market of Nepal and of course for the better as it reduced the high commission charges that were enjoyed by the pioneers of credit card introducers and improved the quality of service. In Nepal, however, the use of the credit cards is restricted to small value and mostly personal transactions and in tourism sector. Today Credit card business in Nepal is provided mainly by four banks; Himalayan Bank, Nabil Bank, SCBNL and very recently NIBL. All of these banks are both issuer and acquirer. Credit card is still in initial stage in Nepalese market. So it is facing some problems. The major problem with the card business is that most of the people are not aware of its benefit. They are only familiar with the general services provided by the Bank. They don't know what the credit card is, how its operation is carried out, how the entire system works and what are the advantages if one becomes the card holder. The primary reason behind this may be huge investment to start card business and comparatively very low return due to small market size. Hence this has been one of the problems to tap the forside business. The main purpose of this study is to analyze, evaluate the card business of Nepal particularly with reference to HBL, NABIL and SCBNL.

1.2.2 Role of Joint Venture Banks in Nepal

Economic development is the urge of the present day world. The major concern of many countries of the world has been to accelerate their development process and thereby increase the welfare of their people. It is more important in a developing country like Nepal. Nepal is one of the least developed countries of the world. Majority of her population remains much below the poverty line. Various factors like rugged terrain, landlocked position, poor resource endowment, and poor stock market and moreover inappropriate economic policies have been responsible for the slow pace of development.

With the worldwide move towards open and market oriented economic system in the world economy, it has led to the expansion of banking and financial system too. Open market policy has been taken by the government to make competitive industrial environment by giving ample opportunities to the domestic as well as foreign investors to invest their savings in productive areas to support the capital formation.

Nepal's first attempt toward planned economic development started in 1956 A.D. since then she has completed nine plans with mixed achievements and tenth plan is in progress, which has given priority to poverty alleviation for which the plan has targeted to improve the economic, human and social indicators. An integrated effort of all the sectors has been conceived to reduce poverty.

In 1980, the government introduced Financial Sector Reforms. Nepal allowed the entry of foreign banks as joint venture with up to maximum of 50% equity participation. Since 1985 government emphasis was on economic policy reforms, foreign investment and technology transfer. Since then several financial and commercial joint venture banks have been established in the process of development and liberalization of the economy. More importantly commercial banks are the popular financial institution which pool together the saving of the community arranges for their productive use. Commercial banks are the heart of a financial system.

A meaningful step towards financial liberalization was undertaken in the FY 1987/1988, with the objective of expediting the process of economic development under structural adjustment program & major reforms including liberalization of interest rate, strengthening of banking operation & a shift from direct to indirect monetary control instruments.

The various roles of the joint venture banks in Nepal can be classified as follows:

-) Healthy Competition: The introduction of joint venture banks also brings the benefit of healthy competition. The competition would force the domestic banks, Nepal Banks Ltd. & Rastriya Banijya Bank to improve their services & efficiency.
-) Foreign Investment: Foreign investment is one of the important aspects for the economic development of the country. When looking at the possibility of investing in Nepal, multinational companies are unfamiliar with the local rules, regulations & practices. The joint venture bank helps the multinational companies to build up their confidence for investment by providing necessary information & financial support.
-) New Banking Techniques: Modern banking services are being provided to Nepalese financial system by new joint venture bank. New banking techniques such as tele-banking, internet banking, mobile banking, fee based activities, hypothecation etc. are

the important contribution of joint venture to the gradually changing Commercial Banking scenario.

1.3 Focus of the Study

In the context of Nepal, credit card is newly entered area in financial and business sector. That is why credit card concept is quite new for both sector; business and general public. Hence, its business is growing slowly. So the general information and current situation of card business are the subject matter of this study.

1.4 Statement of the Problem

In 1951, the first bank credit card appeared in New York's Franklin National Bank for loan customers. It could be used only by the bank's account holders. Within the several years nearly 100 other banks across the country were also issuing card. But in case of Nepal only from 1985 that is after 34 years of inception of card business, credit card business started through the initiative of Alpine Travel Service. In 1993 Himalayan Bank Limited and NABIL bank Ltd both started card business at once by issuing different cards domestic credit card and master card respectively.

Today credit card has become a synonym for currency notes in foreign countries. In other countries there are cash free zones with all the financial needs being handled by bank cards. But in the context of Nepal it is quite difficult to do so. Card business is fluctuating till now from beginning. Acquiring volume mostly depends upon arrival of tourists but tourism sector in Nepal is very sensitive to the quickly changing political situations of the country to fully rely upon it. So the concerned banks are forced to find domestic internal user. So the study will focus on the following problems related to the subject chosen:

- J What are the positions of different banks involved in card business?
- J What is the growth situation of the banks in the card business?
- J What are the trends of credit card users in Nepalese market?
- J Whether the aggregate market is increasing or decreasing over the period?
- J What are the problems related to various transaction of credit cards?

1.5 Objectives of Study

The primary objective of the undertaken research is fulfillment of a course of requirement of the M.B.S programme at Tribhuvan University during the thesis year. As known to us Credit card business is quite new in Nepalese business market. And our objective is to help increase awareness on credit card to general public through the medium of business students and also present the banks with a picture of current market scenario of card business in Nepal, the underlying issues in it and the challenges, and subsequently offer them with some suggestions that will help their business and help them come up with appropriate plans and actions. Though the essence of card is being familiar to people, the credit card business has not been as satisfactory as it should be due to unfavorable situation of Nepal.

This analysis has been done in order to understand the various aspects of credit card. The study first aims to trace how the credit card operation evolved over the years and tries to examine the existing structure and operation of credit card systems. It also tries to analyze the major problems related to credit card and tries to find some measures to improve it. Taking into consideration all these aspects, the specific objectives of the study are as follows;

-) To analyze the problems related to various transactions of credit card.
-) To examine the aggregate market trend for credit cards.
-) To recommend and suggest measures to improve card business in Nepal based on the analysis.

1.6 Importance of the Study

Economic condition of a nation depends upon the development of financial sector. Banking sector is one of the essential components of any nation. The growth of financial and banking sector depends upon reliable services provided by them. Previously banks provided only banking service but nowadays it provides nonbanking services also due to the need and demand of customers. Due to this reason credit card system was introduced. But in Nepal, credit card concept has recently entered in banking sector and general public. Card business is still in the growing stage. The usage of credit and debit cards among the bank account holders of Nepal does not portray an encouraging figure. One of the main reasons in such a

slow growth was the huge deposit - of up to Rs 50.000 - the bank used to demand to issue such cards.

But a paradigm shift in the banks' strategy to issue credit cards to non-accountholders without requirement of any cash deposits is expected to attract more people, especially the middle class families. With the increase of awareness and understanding of the advantages of having a credit card coupled with issuance of proprietary debit card by most of the banks, the prospect of plastic money is growing in Nepal and is very good for future too. Hence, the in-depth research on the potentiality of card business is the subject matter of thorough research in the present context. Therefore credit card is chosen as the subject matter for this research which is very likely to help different parties like business students who want to know about credit card, lecturer, the bank involved in card business to modify their card service and in formulating strategy for smooth operation of card and the government who as to make different policies for regulating the business.

1.7 Limitation of the Study

The study will be limited to the study of performance of Nabil Bank Limited, Himalayan Bank Limited, and Standard Chartered bank limited towards credit card business in Nepal. Since, credit card is new concept for Nepalese business and personal life, an in-depth study and research has yet to be done. Probably such studies have not been made previously. Hence it is difficult to find the references and required information. However, the attempt will be made to be limited within the boundary of available information. Also efforts will be made to present the possibly collected data and information.

-) The study is confined to only three commercial banks Nabil Bank Ltd., Himalayan Bank Lt. and Standard Chartered Bank Limited.
-) The study covered only a period of 5 years since 2005 - 2009.
-) Data for 2009-2010 were not available from card forum so the data on card user trend and merchant trend were gathered from concerned staffs of the bank.
-) Non availability of financial and other data due to privacy so a thorough analysis can not be conducted.
-) No account has been taken for inactive card users or lapse cards.
-) Research is confined only to analysis of credit card business.

1.8 Organization of the Study

The whole study is divided into five different chapters. Each chapter includes following subject.

Chapter - I: Introduction

The introduction chapter will include background, a brief introduction to banks involved in credit card business, history of credit card in the world, historical background of credit card in Nepal, focus of the study, statement of problem, objective of the study, importance of the study, and limitation of the study and organization of the study.

Chapter- II: Review of Literature

The review of literature chapter will include conceptual reviews, review of related study and previous thesis.

Chapter - III: Research Methodology

The research methodology chapter will include research design, population and sample, sampling procedure, sources of data, data collection techniques, data presentation and analysis and statistical tools.

Chapter - IV: Data Presentation and Analysis

The fourth chapter, In data presentation and analysis will be included the statistical analysis important chapter of the study will be the presentation and analysis of data as well as major findings of the study.

Chapter- V: Summary, Conclusion and Recommendation

Summary, conclusion and recommendation will be presented in the last chapter after data presentation and analysis.

CHAPTER – II

REVIEW OF LITERATURE

Review of literature refers to the reviewing of the past studies in the concerned field. Many researchers have conducted their research in the field of card operation. Besides this, there are some books, articles, dissertation and other relevant study concerned with credit card operation. Some of relevant studies, their objective findings and conclusions and other literature relating to the topics have been reviewed in this chapter. In other words review of literature helps to find what already has been discovered by previous researchers, their findings, research gaps that this study will try to find and foretells the very worthiness of the study being undertaken. The topic credit card in fact is quite a new topic for researcher due to this reason very few reviews are found.

This part of study is divided into following sections:

-) Conceptual Reviews
-) Review of related studies
-) Research Gap

2.1 Conceptual Reviews

This part of literature review focuses on the conceptual review of credit card.

2.1.1 Payment Card

A payment card is small plastic card, which allows its holder to pay for goods purchased or services available at different outlets or on-line through site. It also allows the holder to withdraw money from the automatic teller machine (A.T.M.) or from the bank. Before proceeding further deep into the intricacies of credit card business, it will be worth nothing that credit card is just a line of product of the card payment business. Different banks and credit card companies issue different brands of payment card by forming membership such as:-

Members of Visa International headquartered at Yokohama, Japan issue Visa Branded payment cards. Till date it is a non-profitable organization run solely by its thousands of members located globally.

Members of Master card international, head quartered at St. Louis, USA issue Master card branded payment cards. It is also a non-profitable organization till date run by the members.

American Express Corporation Ltd being a big banking giant itself and head quartered at New York, USA issues American Express(here in after referred as AMEX cards) branded cards. It is a profitable organization.

Now all these globally operating institutions, member banks and credit card companies' issues are distinguished from each other by the different features they carry.

2.1.2 Types of Credit Card

There are two types Credit cards: - secured and unsecured. The card that is secured with a saving deposit of cardholders to ensure payment of the outstanding balance if he/she were to default on payment is called secured cards. It is generally used by people who are new to the bank and also who are trying to rebuild their poor credit ratings. The cardholder of a secured credit card is still expected to make regular payments, as he or she would with a regular credit card, but should he or she default on a payment, the card issuer has the option of recovering the cost of the purchases paid to the merchants out of the deposit. The advantage of the secured card for an individual with negative or no credit history is that most companies report regularly to the major credit bureaus. This allows for building of positive credit history. Secured credit cards are an option to allow a person with a poor credit history or no credit history to have a credit card which might not otherwise be available.

They are often offered as a means of rebuilding one's credit. Secured credit cards are available with both Visa and Master Card logos on them. Fees and service charges for secured credit cards often exceed those charged for ordinary non-secured credit cards,

however, for people in certain situations, (for example, after charging off on other credit cards, or people with a long history of delinquency on various forms of debt), secured cards can often be less expensive in total cost than unsecured credit cards, even including the security deposit.

Where as the card which is not secured by any collateral is called unsecured credit card. Most credit cards are unsecured so there is higher interest rate than other forms of lending, such as mortgages, which utilize property as collateral. All credit cards fit into one of the following three categories:

1. Bank Cards

They are the cards issued by banks. For example: Visa and Master card

2. Travel and entertainment (T&E) cards

Examples of these types of cards are American express, Dinners club and Carte Blanche. Travel, entertainment and national house cards have same terms and conditions wherever you apply.

3. House Cards

House cards are good only in a chain of stores. It is generally a local and national retail card.

2.1.3 Transaction Process

The transaction begins when the cardholder purchases any goods and services from a merchant. The merchant prepares a sales draft using an imprinted electronic, which contains cards number, cardholder's name, and expiration date of the card, the amount and the full signature of the holder .The merchant, then sends the sales draft to the acquirer and gets the amount on the sales draft reimbursed at less and agreed discount rate by the acquirer. It is called as "Merchant service fee"(MSF). The settlement bank, Master and Visa International then reimburse the acquirer who sends the data either through line or by processing in through floppy and submitting same. The settlement bank charges the issuer and issuer then bills it to its cardholder who ultimately repays the issue.

2.1.4 Credit Card

It is an instrument of payment used for making payment of services and goods in place of cash or cash items, while repayment can be made after fixed time or over a period of time. It has the option of revolving credit. The cardholders can have the option of partial payment, and on the remaining dues, one has to pay interest. Banks and finance companies issue credit cards carrying the brand of any international payment association such as Visa Card or Master Card. The bank issuing card pays on behalf of card user to the merchant (store) from where the card is used for purchase. A certain percentage is charged from the merchant in return for processing the transaction, crediting the purchased amount less bank's commission to the merchant's account.

The amount that the cardholder uses is treated as a loan, if cardholder doesn't pay the amount within the period given by the bank (grace period), usually within 45 days of statement issued, interest is charged.

A credit card's grace period is the time the customer has to pay the balance before interest is charged to the balance. Grace periods vary, but usually range from 20 to 30 days depending on the type of credit card and the issuing bank. Some policies allow for reinstatement after certain conditions are met. Usually, if a customer is late paying the balance, finance charges will be calculated and the grace period does not apply. Finance charge(s) incurred depends on the grace period and balance, with most credit cards there is no grace period if there's any outstanding balance from the previous billing cycle or statement (i.e. interest is applied on both the previous balance and new transactions). However, there are some credit cards that will only apply finance charge on the previous or old balance, excluding new transactions.

Foreign currency credit card can be availed against the passport facility for traveling abroad. Foreign currency account holders also can obtain credit card for hotel and travel expenses. All Credit card or Charge card users have a credit limit up to which one can use the fund to purchase goods or services. Visa or Master card (depending upon the type of card) is responsible for processing and settling the transactions and the card issuing bank is responsible to collect fund from its customers.

2.1.5 Debit Card

Debit card is also a plastic card, an instrument used to pay the price of services and goods in lieu of cash or cash items, where payment is made only against the deposits available in the customer's depository account and payment is effected immediately. It exactly looks like a credit card but the features are completely different .A debit cardholder must have an account with the bank and the moment he makes any purchase, his account gets immediately debited at the point of purchase and hence is called a debit card. The ATM cards that banks issue are the example of debit cards. It can be used in POS (point of sale) machines to make payment on purchase or services. Debit card users can have direct access to their account but the debit cards issued for a rupee account cannot be used worldwide because of the non-convertibility of Nepalese currency. Member banks and companies of Visa and Master card international issue debit cards.

2.1.6 Charge Cards

Charge card is also a payment card with a pre-set limit. The cardholder does not have the option of revolving credit. The cardholder must pay the entire dues at the end of each month or the billing period.

2.1.7 Chip /Smart cards

A Chip/Smart card is also a payment card and looks like any other plastic card or an ATM with an integrated circuit(IC Chip) installed. The IC contains memory, may contain a processor, and communicates with the external world through contacts on the surface of the card. The size, position and utility of the contacts are specified by an international standard (ISO7816), so that cards can interact with a variety of equipment. There are two main types of smart cards: Intelligent Memory Chip and Microprocessor cards. Payments are made either on-line by connecting to the customers account or off-line through credit card concept and through funds (limit) loaded in the chip. A memory chip has a data storage capability that enables the card to collect every time it is used .The microprocessor chip has additional features such as it can add, delete and manipulate information in its memory. Memory smart cards have been around for several years, being used in pay phones, identification, access control, voting and other applications. Processors smart cards are the most advanced, and are ideally suited for banking and financial applications where use of the card is allowed.

2.1.8 Premium Cards

These cards possess added features such as travel insurance, cardholder assistance and emergency cash advances along with the normal features of conventional credit cards and charge cards.

2.1.9 VISA Cards

Visa international is a membership corporation that is owned by its members. Visa operates the world's largest retail electronic payments network and is one of the most recognized global financial services brands. Visa facilitates global commerce through the transfer of value and information among financial institutions, merchants, consumers, businesses and government entities.

Visa offers a range of branded payment product platforms, which its financial institution clients use to develop and offer credit, charge, deferred debit, prepaid and cash access programs to cardholders.

Visa's card platforms provide consumers, businesses, merchants and government entities with a secure, convenient and reliable way to pay and be paid in 170 countries and territories.

Visa's global transaction and information processing network, Visa Net, supports these payment platforms and delivers value-added services, including fraud and risk management, dispute resolution, rewards and other business-enhancing applications.

Visa's family of global payment brands, including Visa, Visa Electron, Plus and Interlink, enjoy unsurpassed acceptance at 27 million merchant outlets and 1 million ATMs across the world. It is the world's largest payment system owned by more than 22000 financial institutions worldwide. Visa provides its member with.

-) Payment products
-) A global communication network
-) Risk control and authorization services
-) Clearing and settlement facilities

Visa is also a registered trademark. The blue white and gold band form one of the world's largest recognized brands. Visa assures a high profile for the brand through a number of activities, such as advertising, sponsorship of the Olympics and other promotional events. The trade mark is licensed to members for their use to ensure increasing acceptance of Visa payment cards and services worldwide.

Visa international's mission is to enhance member's profitability and pre-eminence by:

- J Enhancing current product (especially deposit access) expanding product offering (commercial & chip cards).
- J Strengthening geo Fig ureic coverage.
- J Improving acceptance of the card.
- J Increasing brand preference.
- J Supporting and enhancing Visa Net systems.
- J Continuous improvement of the supporting infrastructure. (For example, in the areas of risk management, standards, corporate governance).

(www.visa.com)

2.2 Master Cards

The MasterCard story begins in 1966 when a group of banks created a member-owned association that later became Master Card. In 1968 the company extended its presence to Mexico, Japan and Europe, marking the start of its commitment to becoming the leading global payments network.

Through the 1980s, MasterCard continued to build on this promise, bringing the advantages of electronic payments to new regions and markets around the globe.

Master Card became the first payment card issued in the People's Republic of China, and the company also launched Maestro®, the world's first truly global online debit program, in partnership with Europay International.

The next decade saw electronic payments become even more closely integrated into peoples' lives, a behavioral shift MasterCard capitalized on by developing new technologies that improved convenience, speed and efficiency. MasterCard also launched the "Priceless"

ad campaign, elevating its consumer brand and differentiating the company's connection to consumers.

Uncovering new ways to provide value to its customers, MasterCard launched MasterCard Advisors in 2001, bringing innovative consulting services to customers and others within the industry. That same year, MasterCard completed a major upgrade of its state-of-the-art network, enhancing its ability to process transactions safely, securely and instantly the world over.

MasterCard also implemented structural changes that reflected a new outlook for the company. MasterCard integrated with Europay International in 2002, establishing a unified global corporate structure and also becoming a private share corporation.

By 2005, MasterCard had committed itself to a new, customer-focused strategy that aligned its advisory and processing capabilities with its long-standing role as a franchisor. This three-tiered business model crystallized the company's positioning as a franchisor, processor and advisor, laid the groundwork for its transition to a more transparent governance model and initial public offering in 2006.

Today and beyond, Master Card Worldwide continues to provide a unique combination of expertise, industry-leading insight, and globally-integrated resources that the company leverages to deliver value to constituents. Master Card is omitted to innovating and growing the range of products and services the company brings to market through its strong partnerships with its customers. MasterCard Worldwide is a driving force at the heart of commerce, enabling global transactions and bringing insight into the payments process to make commerce faster, more secure, and more valuable to everyone involved.

As a critical link among financial institutions and millions of businesses, cardholders and merchants worldwide, Master Card provides services in more than 210 countries and territories. Master Card advances commerce worldwide by developing more secure, convenient and rewarding payment solutions, processing billions of payments seamlessly across the globe, and building economic connections that accelerate business.

(www.mastercard.com)

2.2.1 Advantages and Disadvantages of Credit cards

Advantages of Credit Card to the cardholders

Credit Cards have numerous advantages, some of them are mentioned below:

- J Safe and secure in comparison to traditional modes of payment like cash, chouse etc.
- J Very convenient to carry it instead of bulky cash.
- J Wide acceptance.
- J Unlike cash it is easy to get replacement.
- J A credit card can be used not only for purchases, but also to make cash advances.
- J Hence, it is helpful during shortage of cash and in emergencies.
- J In built credit instruments with the privilege of interest free credit period of 45 days maximum to 15 days minimum.
- J Facility of revolving credit i.e. option of minimum stated payment on regular.

Advantages to the Merchants

- J Merchants need not worry about the payment as the bank is liable for payment and not the cardholder.
- J Volume of sales increases as the card encourages consumers for purchases, as they do not have to pay in cash immediately.
- J Payment received through credit card is more safe and secure than any other forms o payment.

Disadvantages of Credit Card

In spite of being a most extensively used financial tool, credit card has some inconvenience too. They are:

- J Sometimes card holders complain their goods are not delivered due to amount altered and transactions not authorized. There exist system errors.
- J Sometime merchant can make multiple imprints of the card and sometimes transaction may happen on lost card or counterfeit card etc.

J Processing errors or violation of the rules set out in the Visa / Master card rules like late submission, transaction on expired card, transaction without code, wrong transaction etc.

2.2.2 Parties Involved in Credit Card Business

There are five parties involved in credit card business that is mentioned below.

1. Issuer

Any financial or non financial institution, which is authorized to issue cards under the granted license of Visa and Master card international, are called issuer. Examples of such issuers in Nepal are Nabil Bank Ltd., Himalayan Bank Ltd, Standard Chartered Bank, and Nepal Investment Bank Limited. The issuing bank bills the consumer for repayment and bears the risk that the card is used fraudulently. American Express and Discover were previously the only card-issuing banks for their respective brands, but as of 2007, this is no longer the case.

2. Cardholder

Prospective person or organization (card users), whose cards are issued by the issuer are called cardholder.

3. Merchant

All those outlets which accept these cards as a mode of payment are called merchants. Examples of such merchant are departmental stores, travel agencies, grocery stores, shopping centers, restaurants, hotels, car rental agencies etc. Now days there are many online merchants who have allowed doing transaction on line without the cardholder being present like muncha house, thamel.com.

4. Acquirer

Whenever a card holder makes a transaction the only thing he/she does is sign a sales slip. This sales voucher is then presented to the financial institution, usually a bank which makes the payment to the merchant normally on the same day or the next working day. It further processes it to get the payment from the issuer.

Such institution that accept these transacted sales slips from the merchants are called acquirer. A bank can be both acquirer as well as issuer. For example Nabil Bank issues credit card as well as processes the transactions for its various merchants.

5. Clearing and Settlement

Since a credit card is not a cash purchase and the merchant is paid by its acquirer, it involves a fifth and the most important party called the clearing and settlement bank. Once the acquirer makes the payment to the merchant, it itself needs to get the payment from the bank which has issued the card and it is not possible and feasible to make direct claim as there are hundred or even thousands of such transactions taking places everyday. Hence these claims from all these member institutions are forwarded to the clearing and settlement banks for payment and in the settlement process the actual payments are made. In case of master card this process is conducted by master card international and in case of visa card by visa international.

6. Independent sales organization

Resellers (to merchants) of the services of the acquiring bank.

7. Merchant account

This could refer to the acquiring bank or the independent sales organization, but in general is the organization that the merchant deals with.

8. Credit card association

An association of card-issuing banks such as Visa, MasterCard, Discover, American Express, etc. that set transaction terms for merchants, card-issuing banks, and acquiring banks.

9. Transaction network

The system that implements the mechanics of the electronic transaction may be operated by an independent company, and one company may operate multiple networks. Transaction processing networks include: Cardnet, Nabanco, Omaha, Paymentech, NDC Atlanta, Nova, Vital, Concord EFS Net, and Visa Net.

10. Affinity partner

Some institutions lend their name to an issuer to attract customers that have a strong relationship with that institution, and get paid a fee or a percentage of the balance for each card issued using their name. Examples of typical affinity partners are sports teams, universities and charities.

2.2.3 Components of Credit Card

The component of credit card is as follows:

1. Unique card number

It is the credit card number embossed on the credit card by embossing machine. Card number will be different for different card account. The numbers found on credit cards have a certain amount of internal structure, and share a common numbering scheme.

The card number's prefix, called the Bank Identification Number, is the sequence of digits at the beginning of the number that determine the bank to which a credit card number belongs. This is the first six digits for MasterCard and Visa cards. The next nine digits are the individual account number, and the final digit is a validity check code. The beginning card number differs depending upon the settlement banks. For example Master card number begins with the number 5 and Visa with the number 4.

2. Name of cardholder

Name of cardholder is also embossed on the credit card with the embossing machine. Cardholder may be the account holder as well as any third party.

3. Validity Date

Validity date is also embossed on credit card by embossing machine. It is the date after which the card expires. The expiry month associated with specific year is mentioned on the credit card. Besides, the card may also carry extra codes such as issue numbers and security codes. Not all credit cards have the same sets of extra codes nor do they use the same number of digits.

4. Issuing Bank

The name of credit issuing bank is printed on the card such as Nabil Bank Ltd, Himalayan Bank Ltd etc.

5. Brand Name

The brand name of the credit card associated with certain settlement bank is also printed on the credit card. For example Master card, JCB card etc.

6. Magnetic Stripes

Magnetic stripes will be on the backside of credit card. It is the main part of the credit card. All the data associated with the credit card is mentioned on it. The data can be read with help of specific machine.

7. Photo of the holder

A photo of credit card holder may be attested on the backside of credit card. It depends upon the credit card issuing bank. For example a photo is attested in the Visa card issued by Himalayan Bank Limited but it is not attested in the master card issued by Nabil bank ltd.

2.2.4 Basic Eligibility Criteria for Being a Card Holder

The following criteria must be fulfilled to be a card holder in context of Nepal.

-) Age 18 Years above
-) Have a regular income sources with annual income more than Rs. 120000/-
-) Maintain accounts with any branch of concern bank
-) As prescribed under Nepal Rastra Bank regulation (For International Dollar card)

2.2.5 Documents Required

When once applying for a credit card following documents must be submitted with credit card application form.

Required documents for applying personal card

- Salary certificate/ documentation to prove income source.
- Identification paper (copy of citizenship certificate / passport) Two passport size color photograph.

Required documents for applying a corporate card

-) Company/Firm registration certificate
-) Income tax registration and tax clearance certificate
-) Board resolution authorizing availing of credit card and debiting company account for all charge.
-) Letter by authorized management personnel for issuing individual credit card.
-) A copy of latest audited balance sheet and statement of profit & loss of the firm along with proof of any other income sources.
-) Identification paper (copy of citizenship certificate /passport) Two passport size color photograph
(Brochure Himalayan bank ltd.)

To provide an overview on credit card fees and charges, the fee structure of Himalayan Bank Limited has been included below:

Fees & Charges			
1. Credit Card:			
a. For Premium Savings Account (PSA):			
Description	Membership Fee	Annual/Renewal Fee	Total
Main Card	500/-	1,000/-	1,500/-
Supplementary Card	500/-	500/-	1,000/-
Visa/MasterCard Gold Domestic			
Main Card	250/-	750/-	1,000/-
Supplementary Card	500/-	500/-	1,000/-

b. For Normal Savings Account:			
Description	Membership Fee	Annual/Renewal Fee	Total
Main Card	500/-	1,500/-	2000/-
Supplementary Card	500/-	1,000/-	1,500/-
Visa/MasterCard Gold Domestic			
Main Card	500/-	750/-	1,250/-
Supplementary Card	500/-	500/-	1,000/-

c) Credit Card (International)

Description	Membership Fee	Annual/Renewal Fee	Total
Re-loading NPR			50/-

c. Other Related Fees & Charges:	
a. Re-Issue/Damage Fee	
Visa Gold Domestic	NPR 1,000/-
Visa Classic Domestic	NPR 500/-
Visa Gold International	USD 25/-
Visa Classic International	USD 20/-
b. Lost/Replacement Fee	
Visa Gold Domestic	NPR 1,500/-
Visa Classic Domestic	NPR 1,000/-
Visa Gold International	USD 40/-
Visa Classic International	USD 25/-

www.nrb.com.np

c) Others

Interest (Domestic Card)	2% per month
Interest (International Card)	1.5% per month
Cash Advance Fee (HBL Branches/ATM)	NPR 150/- or 1.5% whichever is higher
Cash Advance Fee (Others)	NPR 200/- or 2% whichever is higher
Cash Advance Fee (International)	USD 5/- or 2% whichever is higher
Cash Advance Fee (Pre-Paid Dom. Card)	On-Us: Nil & Off-Us: NPR 150 Flat
Cash Advance Fee (Pre-Paid Int'l Card)	On-Us: N/A & Off-Us: USD 2/- Flat
Over Limit Fee (Domestic)	NPR 500/- flat
Over Limit Fee (International)	USD 10/- flat
Late Payment Fee (Domestic)	NPR 150/- or 0.5 % whichever is higher
Late Payment Fee (International)	USD 5/- or 0.5 % whichever is higher
Permanent Limit Enhancement	Nil
Temporary Limit Enhancement	NPR 500/- or USD 10/-
VIP Listing	NPR 500/- or USD 10/-
Statement Copy	NPR 200 or USD 3/- after 3 months NPR 500/- or USD 10/-
Document Retrieval Charge [Sales slip copy (on-us)]	(Refundable up to 100% if no mistake of customer)
Document Retrieval Charge Sales slip copy (off-us)]	NPR 500/- or USD 10/- (Refundable up to 75% if no mistake of customer)
Travelers Cheque against Credit Card	NPR 150/- or 2% whichever is higher
ATM Card (Re-Issue)	NPR 100/- per card
ATM Card (Lost)	NPR 200/- per card
PIN (Re-Issue)	NPR 100/-

www.nrb.com.np

2.2.6 Application Processing

Before issuing the card and assigning a number to merchant, the issuing bank analyzes the data and information provided by applicant to minimize the risk in the business. It is called application processing.

Merchant Application

When a potential merchant submits the merchant application form, the bank asks for all the incorporation documents as mandatory during account opening. An analysis is executed by the representative officer who makes the actual visit at the merchant's location and makes a study on the merchant. On the basis of analysis conducted and history of the merchant, a merchant membership number is assigned called merchant number. The merchant is then either given an imprinter machine or an electronic terminal depending upon the volume and frequency of transaction.

Card Application

Similarly, when a potential card holder submits the card application form, first a careful study of the form is made in order to have all the relevant and required information. Thereafter, documents to justify the application request are sought after. After analyzing the concerned documents by related officer, card is issued to those who prove to have genuine intention to pay back and have the affordability to avail the card. As every new cardholder account brings new levels of risk to the organization along with benefit, the application provides the issuer with financial profile of the potential cardholder including income level, length of time at present job or business, guarantee letter from employer, home ownership, financial institutions accounts information and credit history.

Besides a person or an institution willing to have credit card need to open an account in the bank. After all the necessary analysis, card is issued but it is the right of issuer to issue the card or not and creditworthiness of applicant is the basic requirement for the issuer to decide upon it.

2.2.7 Transaction Process of Credit Cards

First of all customer apply for credit card and customer will be given a credit card if the issuer found that a customer is a match for card member. The transaction process starts when the cardholder uses the card to buy goods/ services or cash advance from merchant. The merchant prepares a sales draft using an imprinted/ electronic which contains card number, cardholders name, and expiration date of the card, the amount of the card, the amount and the full signature of the holder.

The merchant submits the draft to the acquiring bank and gets reimbursed with the amount on the sales draft deducting agreed discount rate. The discount rate is called Merchant Service Fee (MSF). Then the acquirer sends the data to the settlement bank by technical line or by processing it through floppy and the settlement bank, Master card and Visa card international reimburse the acquirer who sends the data. The settlement bank charges the issuer and issuer bills to its cardholders who ultimately repays the issuer.

Normally in credit card business there are four parties involved (cardholders, merchant, issuer & acquirer) but some cases only three parties involved when acquirer and issuer are same. In case of cash advance (withdraw) for foreigner, the transaction process starts when card holder goes to the merchant or acquirer or issuer (bank) for cash advance. They act as money provider for the cardholder. In this case first of all money providers have to know that whether the card is genuine or not. For this, money provider takes an authorization number.

In this process firstly money provider has to call to the credit card center, and give details (i.e. card no., expiry date, amount to be advanced etc) and the concerned officer will send telex to the Visa International. He then instantly gets a six- digit authorization no. and that will be provided to the money provider. Then money provider fills up the charge slip along with authorization no. and gets the card holder's signature along with one photocopy of passport. The provider calls his bank of the authorization and imprints the card in the imprinter to print the embossed details of the card on the charge slip and writes down the authorization number given by bank along with sales detail and amount. The provider has to submit the charge slip to the bank within three days of the sales. Then he fills the summary sheet (2copies, one for the bank and one for the merchant), attach the respective charge slip to them and submit it to the bank. The bank charges certain percentage to the merchant (provider) depending upon their nature of business and the charge rate vary among the banks.

2.2.8 Risk and Fraud in Card Business

Besides high profitability in credit card business, there occur risks as well in the business such as fraud. Besides high profitability in the card business, there occur risks such as fraud

as well. Profitability of card business may seriously undermine if losses occur due to fraud. Therefore, minimizing losses due to fraud forms an important responsibility of issuer and acquirer. The largest fraud losses may result from unauthorized use of lost and stolen cards. So, when a card is discovered to be lost or stolen, the cardholder should lodge an FIR with nearest police station as soon as he finds out the card is lost or stolen and immediately inform the concerned bank and send it a copy of the FIR. The issuer should act and quickly and record the lost or stolen card in the authorization file. Any authorization shall be declined and the card will be listed "Pick Up".

The cardholder a/c should be closed and open new a/c in order to segregate genuine transaction and unauthorized transaction. The cardholder a/c should be monitored carefully and the merchant should carefully check warning bulletins before processing a transaction under the merchant floor limit.

a) Magnetic Stripe Fraud

Magnetic stripe fraud (skimming) is recent and sophisticated fraud technology where the information in the magnetic stripe is re-encoded to the counterfeit or altered cards. The cards look genuine when used in magnetic stripe reading terminals. It is typically an "inside job" by a dishonest employee of a legitimate merchant, and can be as simple as photocopying of receipts. Many instances of skimming have been reported where the perpetrator has put a device over the card slot of a public cash machine (Automated teller machine), which reads the magnetic strip as the user unknowingly passes their card through it. These devices are often used in conjunction with a pinhole camera to read the user's PIN at the same time. Nepali card business also witnessed such fraud very recently particularly with the ATM/Debit cards where few foreign gangs were found involved.

b) Card holder's fraud

Card holder's fraud is very difficult to uncover for the issuer. Sometimes, the cardholder may claim about losing his card and meanwhile uses them for services after reporting lost. There is also a Soft fraud which is fraud committed by the customer himself, getting a card and using it with no intention ever to repay the balance. Such customers are called "diabolicals" by the credit card companies; they try to avoid them at all cost.

c) Lost/Stolen cards

The major and the foremost risk associated with card business are with stolen/lost card. If a card is stolen and the cardholder fails to inform the bank on time, then the transactions made before the information is passed to the bank is liable to the cardholder. The bank does fight for their client but if the case is not won, then the liability has to be burdened by the cardholder himself. Carding is a term used for a process to verify the validity of stolen card data. The thief presents the card information on a website that has realtime transaction processing. If the card is processed successfully, the thief knows that the card is still good. The specific item purchased is immaterial, and the thief does not need to purchase an actual product; a Web site subscription or charitable donation would be sufficient. The purchase is usually for a small monetary amount, both to avoid using the card's credit limit, and also to avoid attracting the bank's attention. A website known to be susceptible to carding is known as a cardable website. Nowadays, carding is more typically used to verify credit card data obtained directly from the victims by Skimming or Phishing. A set of credit card details that has been verified in this way is known in fraud circles as a phish.

d) Splitting of charge by merchant

Sometimes the merchants split one single transaction into number of small transaction and present them without taking the authorization code from the acquirer. In such case also there is immense risk associated in case the cardholder denies the merchant's transactions or the transaction gets declined.

e) Alteration of Amount

In many cases, the merchants with fraudulent intention alter the actual amount of the sales draft and present them to the acquirer. In such cases the cardholder denies the charges and presents his copy of the true amount which makes the merchant at fault and hence, is penalized.

f) Signature forgery

Such type of fraud transaction usually happens in case of lost or stolen cards where the culprit forges the signature at back of the card on the signature panel and presents to the acquirer. Such cases can be won by cardholder or by the merchants also depending upon the availability of the supporting from both ends.

g) Identified counterfeit Transaction

There are several criminal syndicates all around the globe who are engaged in the fraudulent transactions of credit cards. In the identified Counterfeit transaction these syndicates use the BIN (Bank Identification Number) and manufacture fabricated counterfeit cards and circulate them in the market, which resemble the original cards in every aspect.

h) Unidentified counterfeit transaction

This is similar to the aforesaid in that the syndicates do not use any BIN to manufacture the counterfeit cards. The BIN used is not a valid one and cannot be traced in the interchange directory.

i) Transaction of expired card

Suppose if a merchant is making a transaction, which is within his floor limit and does not exercise due diligence on his part to verify the expiry date on the card and makes the transaction. In such a case the acquirer denies to process the transaction and the merchant is at a loss. In some cases the draft is sent to the issuer for collection on a good faith basis which is fully dependent upon the description of the cardholder.

Nepal is just a toddler in the field of card business. The credit card business arena has seen numerous kinds of forgeries and frauds in card businesses which perhaps do not seem to happen in Nepal at the moment. Theft through compromised accounts, mail/internet order fraud, account take over, skimming, phishing and many other frauds are prevalent in the card market worldwide. Several strategies and solutions have been devised by card-related people and organizations to overcome and prevent such frauds. The description of all those frauds and measures to overcome them seems to be beyond the scope of this study, hence are not included in this thesis but the common frauds and preventive measures we can take while transacting with cards are here dealt in.

2.2.9 Risk Minimize Mechanism

In order to minimize the risk and losses in fraud card transactions, the parties involved should keep proper monitoring of sudden high charge transactions. In case of potentially loss cards immediate use of warning bulletins and electronic negative file can be crucial for early detection and to minimize fraud losses. The cardholder should immediately notify

the issuer if cards are lost or stolen. Most credit card companies have toll-free numbers and 24-hour service to deal with these emergencies -- they are eager to avoid credit card fraud.

The banks in credit card business should adopt following risk management steps.

- a. Cardholder application must be carefully screened
- b. Proper monitoring of card use.
- c. Judicious collection practices.
- d. Educating the cardholder
- e. Responsiveness to risk situation in order to minimize fraud losses.
- f. The bank should keep proper monitoring for high charge transaction.
- g. Cardholder in case of lost or stolen should immediately inform the bank
- h. Credit card customers may find following tips from internet put forth by Audri and Jim Lanford (Issue #79 June 9,2004) useful in combating credit card frauds.

Internet Scam Busters' 21 Credit Card Fraud Prevention Tips:

1. Keep an eye on your credit card every time you use it, and make sure you get it back as quickly as possible. Try not to let your credit card out of your sight whenever possible.
2. Be very careful to whom you give your credit card. Don't give out your account number over the phone unless you initiate the call and you know the company is reputable. Never give your credit card info out when you receive a phone call. (For example, if you're told there has been a 'computer problem' and the caller needs you to verify information.) Legitimate companies don't call you to ask for a credit card number over the phone.
3. Never respond to emails that request you provide your credit card info via email and don't ever respond to emails that ask you to go to a website to verify personal (and credit card) information. These are called 'phishing' scams.
4. Never provide your credit card information on a website that is not a secure site.
5. Sign your credit cards as soon as you receive them.
6. Shred all credit card applications you receive.
7. Don't write your PIN number on your credit card -- or have it anywhere near your credit card (in the event that your wallet gets stolen).
8. Never leave your credit cards or receipts lying around.

9. Shield your credit card number so that others around you can't copy it or capture it on a cell phone or other camera.
10. Keep a list in a secure place with all of your account numbers and expiration dates, as well as the phone number and address of each bank that has issued you a credit card. Keep this list updated each time you get a new credit card.
11. Only carry around credit cards that you absolutely need. Don't carry around extra credit cards that you rarely use.
12. Open credit card bills promptly and make sure there are no bogus charges. Treat your credit card bill like your checking account reconcile it monthly. Save your receipts so you can compare them with your monthly bills.
13. If you find any charges that you don't have a receipt for or that you don't recognize report these charges promptly (and in writing) to the credit card issuer.
14. Always void and destroy incorrect receipts.
15. Shred anything with your credit card number written on it.
16. Never sign a blank credit card receipt. Carefully draw a line through blank portions of the receipt where additional charges could be fraudulently added.
17. Carbon paper is rarely used these days, but if there is a carbon that is used in a credit card transaction, destroy it immediately.
18. Never write your credit card account number in a public place (such as on a postcard or so that it shows through the envelope payment window).
19. Ideally, it's a good idea to carry your credit cards separately from your wallet perhaps in a zippered compartment or a small pouch.
20. Never lend a credit card to anyone else.
21. If you move, notify your credit card issuers in advance of your change of address.

2.2.10 Procedures following Disputes

The following procedure will be followed if dispute arises:

-) Chargeback cycle
-) Arbitration
-) Compliance
-) T & E Resolution

A. Chargeback cycle

In the event of a chargeback (when there's an error in processing the transaction or the cardholder disputes the transaction), the issuer returns the transaction to the acquirer for resolution. The acquirer then forwards the chargeback to the merchant, who must either accept the chargeback or contest it. A charge back is an electronic message that the issuer sends the acquirer through the system which shifts the financial responsibility of transaction from an issuer to the acquirer. Basically there are four areas under which a charge back is initiated.

They are:

-) Merchant Error
-) Acquirer processing error
-) Suspect fraud
-) Acquirer did not respond to a retrieval request.

The entire process of chargeback cycle begins with retrieval request and proceeds as follows:

Retrieval Request

The issuer on request of their cardholder may seek copies of transactions slips from the acquirer via Master card/Visa International .The purpose is to verify the transaction which is either being confused or disputed by the cardholder.

Fulfillment

The acquirer needs to send the copy of the charge slips to the issuer after receiving retrieval request .The function of sending such slips is called fulfillment. Such fulfillment is made through Master Card (Master Card hub site to receive from acquirer and forward to issuer) via fax transfer in case of Master Card and in case of Visa, the image of sales slip is captured through scanners and sent to Visa System through Visa Online (Internet web site of Visa international), then Visa international forwards it to concerned issuers. The acquirer receives fees ranging from USD 1-8 depending on the submission.

First Charge Back

When the cardholder or the issuer feels that the transaction is not up to their satisfaction, they have right to get back the transaction amount from the acquirer with

valid reason and the process of the same is called chargeback. While initiating chargeback, the issuer must mention the reason for such chargeback within the parameter set by Visa/Master Card international along with reason code. Possible chargeback reason could be; late presentation, unauthorized transaction, expire card, credit not processed, listed in warning bulletin etc.

Representation

If the acquirer feels that the transaction was correct and as per the rules of Visa and Master Card International, it can represent the case with supporting logic and document and get back the transaction amount.

Second Chargeback

If the issuer is still not convinced with the logic and supporting documents forwarded by the acquirer, they can initiate second chargeback and again the money .After second chargeback the acquirer will have no right to represent the case.

B. Pre-arbitration and Arbitration

If the acquirer still feels the transaction was valid, it can file case with Master/Visa international for their ruling .Before filing arbitration case, acquirer needs to send pre arbitration to the issuer for their final consideration .If the issuer declines to the pre arbitration request or fails to respond to acquirer within the stipulated period, it submits the arbitration.

Upon receiving the arbitration case, Visa/Master Card makes the final verdict based on the documents submitted by both the parties concerned. The party, which loses the case, needs to pay filing and application fee of USD 500 along with the chargeback amount.

C. Compliance

A merchant (issuer or acquirer) may file a dispute resolution procedure known as compliance when following conditions occur:

- A Visa operating regulation has been broken.
- The filing member has suffered or will suffer a financial loss because the rule has been broken.
- No chargeback right exists.

The filing member must be able to quote the exact rule from the operating regulation which they believe has been broken or clearly show the financial loss they have or will incur. The arbitration and compliance committee will then decide which party in the dispute should be held liable for the transaction, as well as bear the compliance filing and review fees. Note that a compliance case will be rejected if a chargeback right or any other dispute resolution right exists.

D. T & E Resolution

This dispute resolution procedure can only be filed when the transaction in dispute occurred at a Hotel, or involves a US-based car rental merchant with “Specialized Vehicle Reservation Service” agreement .The dispute concerns a “No Show” transaction.

“No-show” transaction occurs when a cardholder makes a guaranteed reservation for a hotel and then fails to arrive for the booking .Under Visa's Guaranteed Reservation Services, cardholders must cancel their booking within the merchant's specified time frame ,failing which they will be charged for one night's stay at hotel. When a cardholder cancels booking within the specified time frame, the merchant must give the cardholder a cancellation code, with instruction to retain this code in case of dispute.

Dispute may arise between merchants and cardholders over cancellations and cancellation codes. Cardholders may claim that he cancelled their reservation within time frame but was not given a cancellation code. The merchant on the other hand, may insist that the cardholder did not cancel in time and must therefore pay the quoted sum.

In such cases, the issuer or acquirer may file for T&E Resolution. Visa will then decide who is at fault -the cardholder or the merchant, however, due to the difficulty of determining which member should be liable for such transaction, Visa Asia-Pacific often funds such disputed transaction on the condition that the issuer educates the cardholder and the acquirer educates the merchant on the correct procedures for canceling guaranteed reservations. There is no filing fee and no review fee for T& E

resolutions .Member should note that T&E Resolution case would be rejected if a chargeback or compliance right is or was available (Thapa 2002:20-30).

2.3 Review of Related Studies

The following work papers and abstracts about credit cards are drawn from websites:

Visa International (2003), states in 1998 over 185 million bankcards were issued in Asia Pacific region alone which accounted for transaction worth over US \$330 billion. When compared to other regions such as European Union, North America, etc the volume is quite low but a consistent growth of 30% has been maintained by the payment cards sector in the payment industry .Merchant locations outlets that accepts these cards as a means of payment is over 5.4million. The growth of electronic terminals (device which executes transaction electronically) is growing at an annual rate of 40% whereas the numbers of ATMs (Automatic Teller Machines) has grown at the rate of 25%.

With demo Figureics of about two third of the worlds populations and 25% of the worlds gross domestic products- Asia pacific Region has more than 500 million bank customers. With the above stated growth rate and the emergence of middle class consumers, this fertile market displays tremendous potential to become a cash free zone with all the financial needs being handled by bankcards. (www.visa.com)

Kinley (2004), states Visa's regional head stating that East Asia is and will be in years to come Visa's fastest growing market. In the same work it is also stated that credit card usually generates returns on assets above 5%.

Kinley (2005), credit card spending in Korea is increasing at a rate of 90% per year. According to Visa, the volume for Visa brand only in the Asia Pacific region during 12 months ending December 31, 2000 reached US\$ 332 billion. For the same period card sales volume growth in constant dollar terms was headed by Korea-up to 102.5% at US \$ 128.4 billion .Australia -29.1% at US \$45.6 billion .and Japan -up 14% at US\$ 81.0billion .These figures only account for one single brand and when combined with the other players such

Master Cards, Dinner Club. Americans express card, Japanese Bureau Card (JCB), Discovery Card etc may result in huge digits.

The most advanced and latest development in the payment in the payment card sector is the issuance of Smart Card. A Smart card is a plastic card, which has an embedded computer chip in it fostering and processing sensitive data. The application landscape includes public telephone, e-commerce, Electronic Wallets; Cable TV refreshes details, Health /Medical applications and other authentications such as Net stock brokerage, petroleum retail, and car parking. Although payment card sector is credited for the genesis of such highly sophisticated product, today many other organizations such as telecommunication companies, mass transit companies, government departments are issuing such cards. For example, Gujarat Government, a state of India, issues driving licenses based on smart cards.

2.4 Unpublished Thesis

Hada, Sunila (2006), had conducted “Credit card Practices in Nepal” statistical tools. The Objectives and findings are as follows:

Objective

-) To this research, researcher had tried to find out the situation of credit card in Nepal
-) To The period considering three banks and the leader bank that led the card business

Finding

-) To the viability of card business in Nepal. In this research too the researcher had failed to present the exact business of credit card and the research is only based on secondary data.
-) To the necessity of research is still not finished.

Joshi, Niva (2007), in her thesis entitled “Credit Card Market in Nepal” evaluated the market share of HBL, SCBNL and NABIL Bank. The data collected from surveys and interviews of card holders, non cardholders and professionals were highlighted. The data were represented in graphical form and showed the market share of Credit Card issuing

banks. The thesis also gives us the information about the development of the Card Industry in Nepal and the world.

After the data analysis, she has suggested following measures for newcomers in Credit Card business statistical tools. The Objectives and findings are as follows:

Objective

-) Credit Card business has tremendous potential of growth in Nepal. People need to be made aware of plastic money so that Credit Card transaction will grow.
-) Banks have to be more aggressive in issuing and acquiring Credit Cards.

Finding

-) They also should install point of sale (POS) terminal in number of merchants outlets.
-) Banks need to be aware of Credit Card business strength, weakness, opportunities and threats.

Shrestha, Rajina (2008), had conducted research on “Credit card business in Nepal with Reference to Himalayan Bank Limited” statistical tools. The Objectives and findings are as follows:

Objective

-) To the work is highly commendable and she had drawn significant conclusions and remarkable recommendations for Himalayan Bank.

Finding

-) To The study is more analytical and also attempts to give a slight picture of credit card market in Nepal. But the study only deals with one bank and is only directed to identify problems of that particular bank only.

Pandey Rajshree (2009), conducted a research on "Master card business in Nepal". In his research the concept of credit card has not been developed significantly in our nation as it has been in other nations. People believe in carrying cash rather a card.

Since most of the people in Nepal belong to middle and lower class family they hesitate to pay the annual fee for the card; moreover they make purchases in small grocery shops where credit cards are not accepted. Hence we can say that concept of card in Nepal is in its budding stage statistical tools. The Objectives and findings are as follows:

Objective

-) To the prospective and growing market for credit card business especially acquiring business.
-) To the people are being aware about credit card facilities and the advantages of holding a credit card.
-) To the gradually progressing in industrialization process and increasing.
-) To the income level among the higher and middle class society.
-) To the possibility of other banks or financial institutions entering this field.

Finding

-) To The performance in card business is concerned it is under performing owing to many factors.
-) To the lack of penetration and habituation in the market, supporting technology .
-) To the factors level of impact and reasons for their existence. At this competitive age, HBL cannot afford to rest on its laurels and should aggressively segment the market
-) To the certain aspects of its policy might need to be revised or completely eliminated.

Joshi, Sanjeeb (2010) conducted a research on "Credit Card Business in Nepal with Reference to Nabil Bank, HBL and SCBNL". In his analysis, he aims to trace how the credit card operation evolved over the years and tried to examine the existing structure and operation of credit card systems. He also tries to analyze the major problems related to credit card and tries to find some measures to improve it. He examined the aggregate market trend for credit card, recommend and suggest measures to improve card business in Nepal based on his analysis Statistical Tools. The Objectives and findings are as follows:

Objective

-) To credit card is one of most vigorously sought after and growing business in the world.
-) To Credit card is a plastic card which allows the holder to purchase goods and services on credit and is mostly issued by banks or financial institutions.
-) To Form a merchant point of view, it will increase the sales of the merchants as the trend today is of plastic money and also he gets rid from taking collected money to banks for deposits.
-) To everything happens electronically and the merchant's account gets credited very shortly after every purchase.

Finding

-) To Risk is the major element of any kind of business.
-) To Card business is also a risky business.
-) To profitability is very high the difficult chances from card holder
-) To the basic of salary sheet and few identification number or tax code.

2.5 Research Gap

Credit card business is most popular form of payment among the types of payment due to its special features. But in Nepal the popularity of credit card is quite low due to ignorance about this card business. There are not many researches conducted on this topic and the study which is related to this topic is also unable to brief on the detail meaning and importance of credit card in modern life. The above two research is only based on the secondary data. Hence this research is distinct in the sense of presenting secondary data as well as primary data which shows the concise figure of credit card business in Nepalese market and how it affects modern life. An approach toward finding market scenario, card players, customer behavior, attitude toward card services, attracting future customers and retaining present customers, marketing need for credit cards, possible improvements and role to be played by different parties involved in the business has been taken in this thesis.

CHAPTER – III

RESEARCH METHODOLOGY

Research means search something again and again for knowledge. We study the social problems to find out something more about the phenomena. The first look may not always be adequate. It may be prone to error. Therefore, we look into the phenomenon and study the problem differently and thoroughly each time. This process of searching many times is known as research. Research is a knowledge building process. It generates new knowledge, which can be used for different purpose. Research is undertaken not only to solve a problem existing in the work setting, but also to add or contribute to the general body of knowledge in a particular area of interest to the researcher. Thus research is an organized, systematic, data based, critical, scientific inquiry or investigation into a specific problem, undertaken with the objective of finding answers or solutions to it.

Methodology is the research method used for investigation. Research Methodology is the way of doing and completing research work. It is the way to solve the research problem systematically. The systematic and well organized way of solving the research problem can be referred to as research methodology. The research methodology methods and techniques are convenient and appropriate for analyzing the data and information collected. This includes personal observation, questionnaire distribution, secondary data collection, annual report, previous study, websites of commercials banks etc. Research methodology depends on the various aspects of research projects. The size of project, the objective of project, impact of project in various aspects of human life etc are the variables that determine the research methodology of the particular projects.

The topic of the problem has been selected as credit card operation. A study on credit card operation of Nabil, Standard Chartered and Himalayan bank with Tentative objectives of pointing out the problem, as well as to determine ways of retaining present customers while attracting future customers has been conducted.

3.1 Research Design

A research design is a plan or blue print of investigation for the collection and analysis of data .It helps the researcher in the right direction in order to achieve the goal.

This is a descriptive, diagnostic and development research. Descriptive research is essentially a fact finding approach relative largely to present and abstracting generalizations by cross sectional study of the current situation and diagnostic research design relates to problem and to find out that solution. The research can also be taken as a development approach as it takes the developmental approach in finding out the solution. The research can also be taken as a development trend of credit card business in Nepal. This research shows trend of credit card business in Nepal.

3.2 Population size and sample Unit

There are twenty-three commercial banks operating in Nepal at present. Population refers to the target group on whom we have conducted our research. Currently there are four banks providing credit card facility and they are HBL, SCBNL, NIBL and NABIL banks. Three Banks is taken as sample.

3.3 Sampling Procedure.

Sampling is the process of selecting the sample from the given population. The method of selecting a sample usually depends upon the nature of the investigation. Under different techniques of sampling, judgmental sampling technique has been used in this study. The sample banks for this study are HBL, SCBNL and NABIL bank.

3.4Sources of Data

Each field work has its own data needs and data sources. Data for this study has been collected from basic two sources namely primary data and secondary data.

Primary data

They are first hand data. They are obtained directly from the source. For primary data collection interview was taken with staffs in the concerned department. Interaction and interviews with card users and merchants were also carried out. Direct interview with the

staffs, officers and departmental heads involved in the credit card center was also made. The officer clarified all the data and gave all the required information in relation to the study. Regular unstructured and structured interviews were conducted with the said groups during the research period.

Secondary Data

Secondary data are those data that has already been generated by others. Sources of secondary data for this study includes sales information, accounting data, internally generated reports which are found within the company and web site of the company and sources refers to books, websites, publication periodicals, data service and computer data banks, reports and statistics gathered and compiled by other prior to study.

Sources for this study have been listed below:

- Data and information relating to Credit card collected from HBL, NABIL, and SCBNL and provided by department head at Kumari Bank Limited.
- Consolidated report of Nepal card Member forum.
- Publication of HBL, NABIL, SCBNL.
- Annual reports of different years.
- By monthly newsletter of HBL, NABIL, SCBNL.
- Internet articles and previous thesis and project works

3.4 Data Collection Procedure

Both primary and secondary data were used in preparing these reports. And data was obtained directly from concerned staffs in the credit card centre of the concerned banks. Previous theses were also consulted for the consolidated data record from Nepal card member forum. As mentioned above few data were also taken from the card department head of Kumari Bank Limited.

Structured Questionnaire

Structured questionnaires were prepared for three different sample groups; Customers (card users), Merchants and Departmental stores. Few banking staffs and friends working at

Alpine Travel Service and various banks with acquaintance of credit card were also consulted.

Customers

This questionnaire was targeted to people regardless of sex, age, education or any other such demographic criteria, the only requirement was that the respondent had to have a credit card of any bank of Kathmandu. This questionnaire was designed so as to focus on specific reason for acquiring credit card and choosing particular banks for doing so. For the credit card holders, the question mainly focused on the types of credit card acquired, means of gathering information about credit card, reasons for acquirement and problems encountered with usage of card, frequency of usage, places of usage, reasons for usage, future plans of termination and reasons for doing so.

Merchants

The merchant's questionnaire was targeted to merchants of different establishment such as departmental stores, restaurants, hotels, travel agents and others such as retail outlets concentrated in Lalitpur, Bhaktapur and Kathmandu. The questionnaire was divided into two portions; one focused on Merchants having credit cards facilities and the other merchants not having the facilities. The first section consists of questions focused on the acquiring bank, reasons for selection of bank, reasons for acquirement of facilities, frequency of usage of credit card and problems encountered with usage of card. The second section comprises of questions regarding reasons for not acquiring credit card facilities, reaction of customers to absence of credit card facility and whether there is planning for installing credit card facility and reasons for doing so or if not then why.

Departmental Stores

Departmental stores questionnaire was targeted to departmental stores providing credit cards facilities to their customers. This questionnaire was designed so as to find out the reasons for selection of different banks cards. The questionnaire included most of the questions in 'Merchant' questionnaire. Furthermore, apart from general information, acquiring bank, reasons for selection of bank, reason for acquirement of facilities, frequency of usage of credit cards and problems encountered with usages of cards were asked.

Besides questions were also made to staffs of Alpine Travel Service and few banks for their say on credit cards, the credit cards of their particular bank, problems in marketing frauds

and the general awareness and perception on credit card from their side as well as their view on general people thinking on credit cards.

3.5 Methods of Data Presentation and Analysis

As stated earlier, the basic structure of this study is descriptive and analytical as well. In order to make the study more precise, the data are presented in tabular form. Figures and diagrams are used to clarify and verify the data presented.

Various statistical tools are used to evaluate the performance of credit card business. Card business comparison among Nabil Bank Ltd, Himalyan Bank Ltd, Standard Chartered Bank Ltd and Nepal investment Bank Ltd is also made.

3.6 Statistical Tools Used

The following statistical tools are used to evaluate the working performance of credit card business in credit card market in Nepal.

Standard deviation

The standard deviation measures the absolute dispersion. The chief characteristics of standard deviation are that it is based on mean, which gives uniform and dependable results. A standard deviation is the positive square root of average sum of squares of deviations of observations from the arithmetic mean of the distribution. Karl Pearson introduced the concept of standard deviation in 1823 and denoted it by small Greek letter " " called sigma.

Coefficient of Variation (C.V.)

The standard deviation in the formula gives an absolute measure of dispersion. The C.V. is used for comparing the homogeneity, uniformity, and variability of two or more distributions. Here, where the mean value of the variable is not equal, it is not appropriate to compare two pairs of variables based on standard deviation only. The coefficient of variation measures the relative measures of dispersion, hence capable to compare two variables independently in terms of their variability. Coefficient of variation can be expressed mathematically as,

$$\text{Coefficient of variation (C.V.)} = \frac{\Sigma}{\bar{X}}$$

Correlation of Coefficient

Correlation coefficient may be defined as the degree of linear relationship existing between two or more variables. Two variables are said to be correlated when the change in the value of one variable is accompanied by the change of another variable. It is denoted by small r and is expressed as,

$$\text{Correlation of coefficient} = \frac{\sum (X - \bar{X})(Y - \bar{Y})}{\sqrt{\sum (X - \bar{X})^2 \sum (Y - \bar{Y})^2}}$$

Trend Analysis/Time Series

Economists and business experts have often to deal with variates (quantities) which change in value with time. Variation of such quantities with time can be systematically studied and analyzed by presenting on the Figures. For obtaining knowledge about the nature of variation of a quantity along with time, time series can be used. Hence the time series is used to measure the change of the economical and commercial data like population, sales, productions, exports, and imports over a period of time.

When a series of data pertaining to a series of continuing periods should be studied, its characteristics and its future direction is best estimated by the time series. This analysis is a series of data keeping in mind the various short term and long term fluctuations.

The data of last five years from 2004 to 2008 has been used in measuring the trend analysis. The least square method to trend analysis has been adopted to measure the trend behavior of sampled bank. The straight line trend of series of data is represented by the following formula:

$$Y = a + b x$$

Here "Y" is used to designate the trend values to distinguish them from the actual "y" value; 'a' is the 'y' intercept of the computed trend figure of the y variables. It is the minimum value of Y when x = 0, and b represents the slope of the trend line. It is the regression coefficient of Y on x or rate of change in Y for the unit change in x.

CHAPTER – IV

DATA PRESENTATION AND ANALYSIS

This chapter deals with the analysis and interpretation of the data collected from various sources and research methodology. In the course of analysis, data gathered from the various sources have been presented in tabular form. Various tables prepared for the analysis purpose have been shown in the appendix. Data has been analyzed by using financial and statistical tools.

4.1 User Trend of Credit Card Business

The credit card business is in an initial phase in Nepalese market. Hence the users of credit card are subsequently low. The following table shows the number of credit card users of the sample banks: NABIL, HBL and SCBNL for the past 5 years.

Table 4.1
User Trend of Credit Card Business

Year	NABIL	HBL	SCBNL	Industry
2004-2005	4910	4088	6777	15775
2005-2006	5450	5683	7454	18587
2006-2007	5940	7388	8200	21528
2007-2008	7200	8852	9020	25072
2008-2009	7500	10249	9364	27113
Average	6200	7252	8163	21615
Growth	11.34%	26.15%	8.45%	14.56%
Standard Deviation	998.42	2192.40	1151.14	4134.27
Coefficient of variance	16.10%	30.23%	14.10%	19.13%

Source: From Banks

Figure 4.1
User Trend of Credit Card Business of Nepal

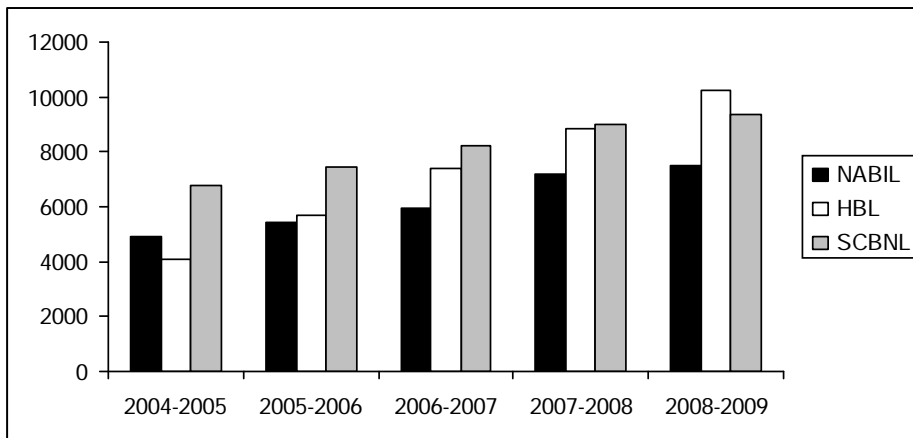
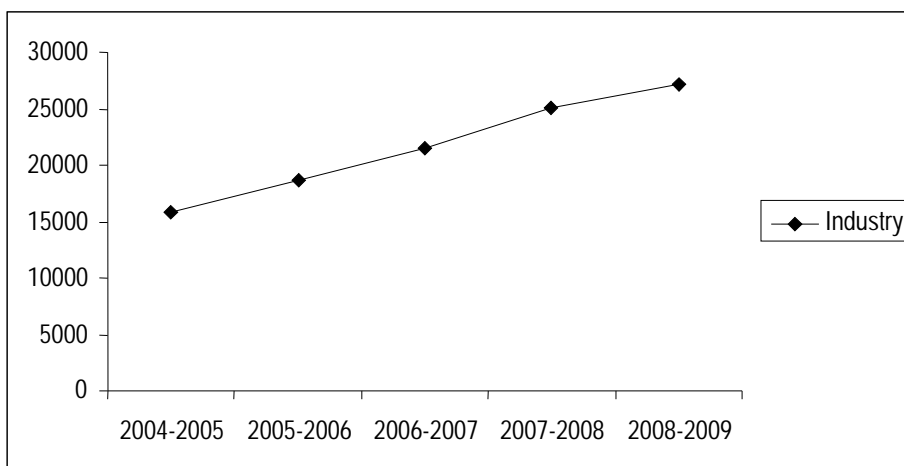


Figure 4.2
User Trend of Industry



The above table shows the trend of cards users of NABIL, HBL, SCBNL and Industry.

The average users of different banks: - NABIL, HBL, SCBNL and Industry are 6200, 7252, 8163, and 21615 respectively. In comparison among the three banks HBL has the highest number of card users while it was SCBNL previous year. Similarly annual growth rate of sample banks NABIL, HBL, SCBNL and Industry are 11.34%, 26.15%, 8.45% and 14.56% percent respectively. HBL has the highest growth rate among the three sample banks and SCBNL has the lowest growth rate which is not different from the previous year.

Standard deviation shows the volatility of the user trend. From above data, the standard deviation of NABIL, HBL, SCBNL and Industry are 998.42, 2192.40, 1151.14, and 4134.27 respectively. While analyzing the volatility of user trend, HBL has the highest volatility among three sample banks but all banks have less volatility than the industry.

The coefficient of variance measures the risk of business, higher the C.V. higher the risk, lower the C.V. lower the risk of business. Form above data, the coefficient of variance of sample banks NABIL, HBL, SCBNL and Industry are 16.10 percent, 30.23 percent, 14.10 percent and 19.13 percent respectively. HBL has the highest C.V. It shows that HBL has higher risk than other banks. Similarly SCBNL has lowest C.V. and it shows that it has lower risk.

In spite of having the highest number of cardholders and growth rate, HBL has the greatest volatility and risk. SCBNL has lowest growth rate but relatively lower risk.

4.2 Merchant Trend of Credit Cards Business

The acceptance infrastructure plays vital role in boosting the card business. It encourages people to use the card and facilitates payments without immediate cash. The following table shows the merchant trend of credit card business.

Table 4.2
Merchant Trend of Credit Card Business

Year	NABIL	HBL	SCBNL	Industry
2004-2005	750	619	693	2062
2005-2006	900	708	762	2370
2006-2007	1050	750	838	2638
2007-2008	1200	777	922	2899
2008-2009	1250	926	1005	3181
Average	1030	756	844	2630
Growth	13.78%	10.77%	9.74%	11.47%
SD	186.01	100.45	110.96	391.47
Coefficient of variance	18.05%	13.28%	13.14%	14.88%

Source: From Banks

Figure 4.3
Merchant Trend of Credit Card Business

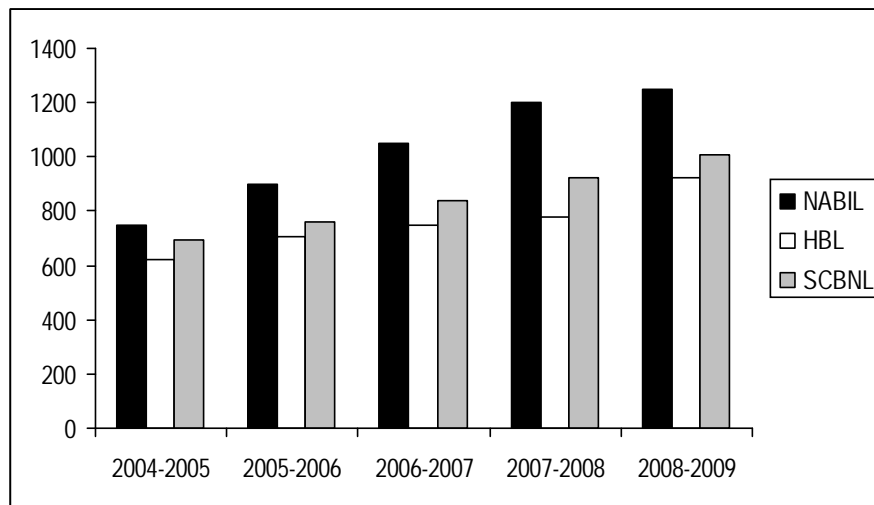
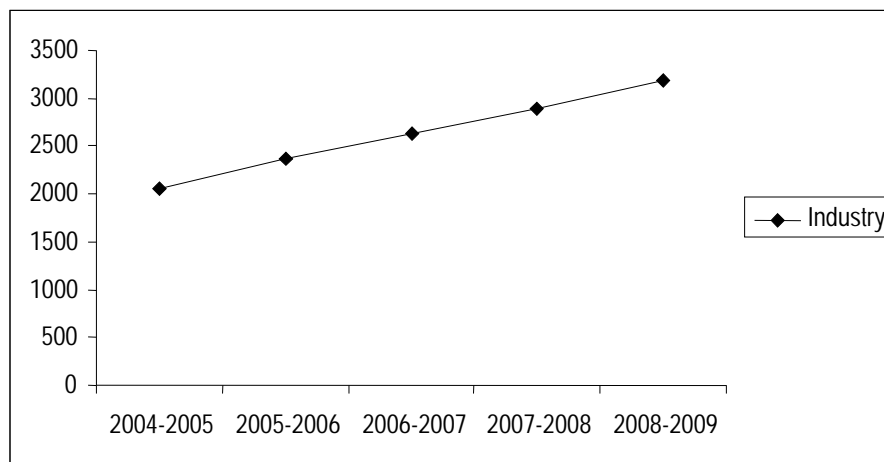


Figure 4.4
Merchant Trend of Industry



Above table and figure show the merchant trend in card business. Among the sampled banks NABIL, HBL, SCBNL and Industry have average number of merchant 1030, 756, 844 and 2630 respectively. NABIL has the highest and HBL has lowest average number of merchant among the sample banks.

Similarly annual growth rate of sample banks NABIL, HBL, SCBNL and Industry are 13.78 percent, 10.77 percent, 9.74 percent, and 11.47 percent respectively. NABIL bank has the

higher growth rate than HBL and SCBNL. SCBNL has the lowest growth rate of merchant while it was HBL previous year.

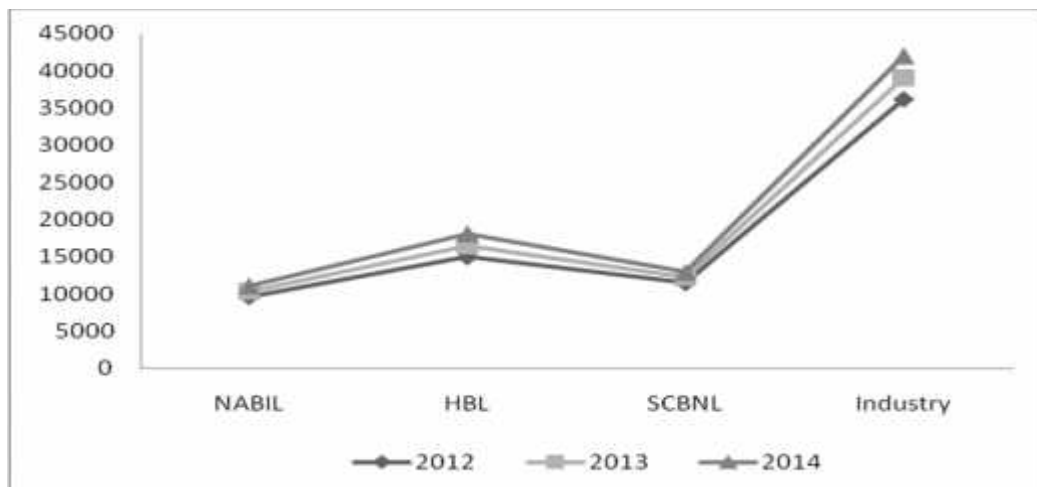
Standard deviation of NABIL, HBL, SCBNL and Industry are 186.01, 100.45, 110.96 and 391.47 respectively. It shows that volatility of merchant of NABIL is highest. All banks have less volatility compared to Industry.

The coefficient of variance of sampled bank NABIL, HBL, SCBNL and Industry are 18.05 percent, 13.28 percent, 13.14 percent, and 14.88 percent respectively. Analyzing these figures, NABIL has the highest risk and SCBNL has lowest risk. Though NABIL has the highest number of merchant and growth rate it has greater volatility and risk among the three banks.

Table 4.3
Forecasted user Trend of Credit Card Business

Year	NABIL	HBL	SCBNL	Industry
2012	9665	14997.5	11533	36195.5
2013	10358	16546.6	12207	39111.6
2014	11051	18095.7	12881	42027.7

Figure 4.5
Forecasted user Trend of Credit Card



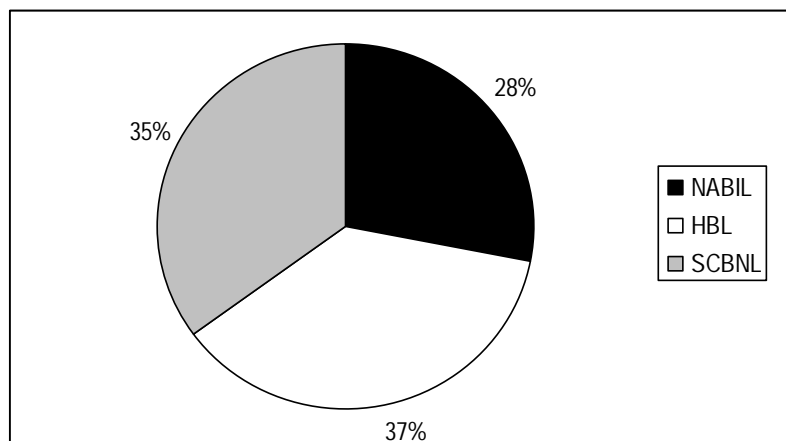
Above Table and figure show the forecasted user trend of credit Business. Among the sampled banks NABIL, HBL, SCBNL and industry have increasing trend of credit card user. This table and figure shows that card business in Nepal is growing day by day rapidly.

4.3 Present Market Share Hold by Different Banks

In context of Nepalese credit cards business NABIL, HBL, SCBNL, and NIBL as well are involved. Since, we are considering only three banks NABIL, HBL, and SCBNL, in the following Figure, market share of sampled banks are presented in case of number of cardholders and merchant.

Figure 4.6

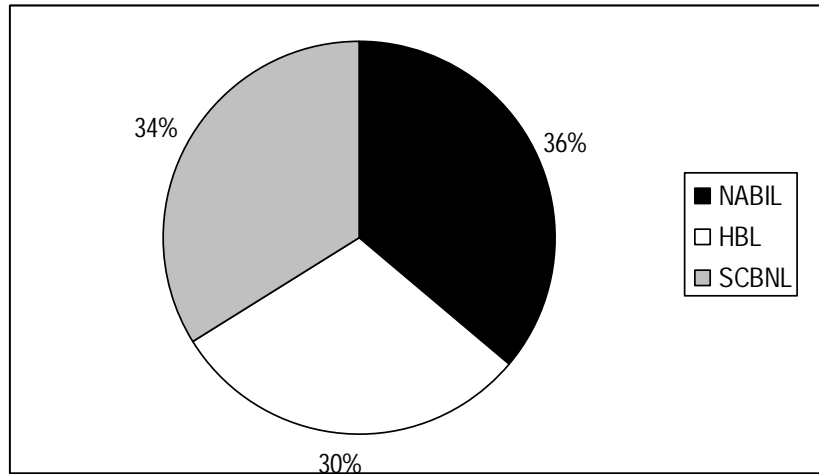
Market share of banks in terms of number of cardholders for the Year 2008/09



Above Figure shows the market share of different banks involved in credit cards business. In case of number of card holders or issuance market HBL, SCBNL and NABIL hold 37 percent, 35 percent and 28 percent respectively. HBL has the highest percentage and NABIL has the lowest percentage among three banks regarding card issues.

Figure 4.7

Market share of banks in terms of merchant hold for the Year 2008/09



Above figure shows the market share of number of merchant hold by banks in credit card business. NABIL, HBL and SCBNL hold 39 percent, 29 percent and 32 percent respectively. The figure indicates the highest and lowest share of NABIL and HBL respectively.

Though in terms of issuance HBL has the highest market share, in case of merchant it occupies the lowest market share. Similarly in terms of issuance NABIL has the lowest market share but with merchant hold it almost has the largest market share.

Measuring Correlation (r)

Correlation coefficient helps to find the relationship between variables and how they move together. In this study relationship between different banks in case of cardholder and merchant is calculated and found as follows.

Table 4.4
Correlation Analysis of NABIL Bank

Tools	NABIL with HBL	NABIL with SCBNL	NABIL with Industry
Correlation (No. of cardholders)	0.67	0.96	0.89
Correlation (No. of merchants)	0.91	0.98	0.99

According to the above table the correlation between the number of cardholders of NABIL Bank with HBL, SCBNL and Industry are 0.67, 0.96 and 0.89 respectively and number of merchant are 0.91, 0.98 and 0.99 respectively, which indicate NABIL has positive correlation with HBL and higher and positive degree of correlation with SCBNL and Industry. This means NABIL, SCBNL and HBL move in the same direction. In case of number of merchants also NABIL has positive and high degree of correlation with other sampled banks and industry.

Table 4.5
Correlation Analysis of HBL

Tools	HBL with NABIL	HBL with SCBNL	HBL with Industry
Correlation (No. of Cardholders)	0.67	0.98	0.99
Correlation (No. of Merchant)	0.91	0.96	0.96

Above table shows the relationship of cardholders of HBL with NABIL, HBL with SCBNL and HBL with Industry. HBL has positive correlation with NABIL and a high degree of positive correlation with SCBNL and Industry. In case of number of merchant also HBL has positive and high degree of correlation with NABIL, SCBNL and Industry.

Table 4.6
Correlation Analysis of SCBNL

Tools	SCBNL with NABIL	SCBNL with HBL	SCBNL with Industry
Correlation (No. of Cardholders)	0.96	0.98	0.98
Correlation (No. of Merchant)	0.98	0.96	0.99

According to above table, the correlation between the number of cardholders of SCBNL with NABIL, SCBNL with HBL, and with Industry are 0.96, 0.98 and 0.98 respectively and number of merchants are 0.98, 0.96 and 0.99 respectively. SCBNL has positive and high degree of correlation with all other banks and industry in terms of both card issuance and

merchant hold which indicates that SCBNL is moving in positive direction with other banks and industry.

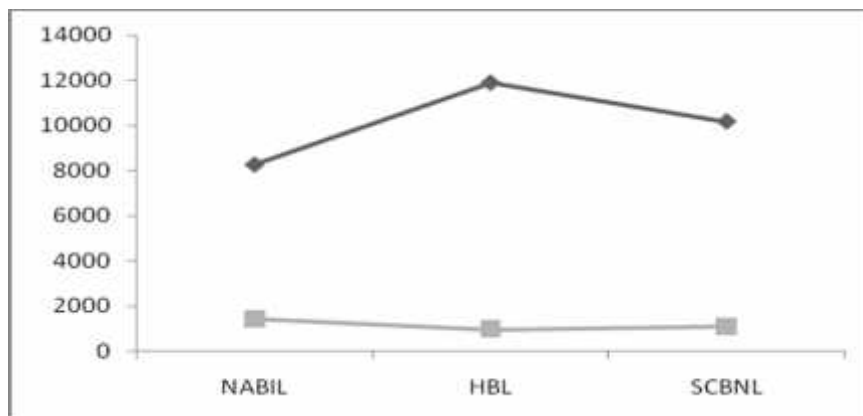
4.4 Trend Analysis

For obtaining knowledge about the nature of variation of a quantity along with time, time series is used. When a series of data pertaining to a series of continuing periods should be studied, its characteristics and its future direction is best estimated by the time series. The most commonly used method to describe the trend is the method of least square which helps us know the movement of variables and by using this tool the future value can be predicted. In this analysis for predicting the future value of new number of cardholder and number of merchant for present year 2008/2009, least square method is used and the summarized values are as follows:

Table 4.7
Projected Values of Different Banks for the Year 2008/2009

Tools	NABIL	HBL	SCBNL	Industry
No. of cardholder	8279	11899	10185	30363
No. of merchant	1420	961	1079	3460

Figure 4.8
Trend Values of Different Banks



Above figures show the data for year 2008/2009 according to table, the number of card holder and number of merchants of NABIL in 2009 is 8279 and 1420 respectively.

Similarly number of cardholder of HBL in 2009 is 11899 and merchant is 961 and SCBNL's number of cardholder and merchant for 2009 is 10185 and 1079. Similarly, number of cardholders and merchants of Industry is 2009 is 30363 and 3460 respectively.

4.5 Result Section of Questionnaire

Credit Card Customers

As per Figure 4.9, out of 50 respondents (cardholding customers), 57% were male and 43% female.

As per figure 4.10, out of 50 customers on the basis of age group, 46% were above 30, 2% were between age 18-25 and 32% were between 26-30 years.

As per figure 4.11, out of 50 respondents on the basis of educational background, 6% were of 10+2 level, 30% had Bachelor degree, 50% had master degree and the remaining 14 % had doctorate degree.

As per figure 4.12, out of 50 respondents, 56% respondents have had VISA card and 44% had master card. Hence we have found that customers are simultaneously using VISA card and Master Card. None of my respondents possessed JCB, Diners, and American. Express and other cards. These cards are mostly held by tourists and foreigners and the acceptance infrastructure for these cards is slowly growing. These cards are accepted in few departmental stores, merchants (travel agency and hotels only).

As per figure 4.13, among the sample banks, it is seen that most of the customers have acquired credit card of Himalayan Bank Limited. 36% cardholders acquired card of Himalayan bank, 30% acquired card of SCBNL, 24% acquired card of NABIL Bank Limited and 10 % acquired card of NIBL.

As per figure 4.14, out of 50 respondents, 20% decided to acquire credit card because of increasing market trend, 40% decided to acquire card because they needed credit facilities, 30% decided to acquire card because of convenience and security and 10% acquired card

for various other reasons. Hence we can see that majority of customers acquired card for credit facility as well as to keep up with market trend, convenience and security.

As per figure 4.15, out of 50 customers, 10 % use credit card in restaurant, 30 % of them use at the hotel and 34 % of them use at departmental stores. Likewise, 22 % of them use credit card at travel agency.

As per figure 4.16, from the sample size of 50, it was seen that most of the customers, 44%, were acquainted with credit card through broadcasting media like, TV, radio and the next effective media from which they came to know about the credit card were electronic media and print media, which comprised of 30 % and 26% respectively.

As per figure 4.17, out of 50 customers, 24 % of them possessing card were very satisfied, where as 52 % of them said they were satisfied and 24 % of them were neutral while no one felt they were unsatisfied by the credit card they availed.

As per figure 4.18, out of 50 customers, 56% (28) were satisfied with the limit made by the bank where as 16 % (8) were not satisfied with the limit and similarly 28% (14) of them were neutral about the limit made by the bank.

As per figure 4.19, out of the 50 card holders, it was found that 26 % of the card holders make less than 20% of their purchases through credit card, 34 % of them make 20% - 40 % of their purchases through credit card. Similarly, another 20% make 40% - 60% of their purchases through credit card and likewise 14% of the card holders make 60%-80% of their purchase with it and the customers who make more than 80% of their purchase only comprised 6 % which is pretty low.

As per figure 4.20 out of 50 card holders, 44% had encountered different types of problems and rest of 56 % of card holder had not yet faced any sort problem.

As per figure 4.21, among those who encountered problems with their credit card, 45% faced problem of non acceptance of card by machine and 40% faced problem of non acceptance by merchant.

As per figure 4.22, out of 50 respondents, almost 36% had no idea on credit card frauds, 20% were aware on risk of cards stolen, 16 % knew about counterfeit card frauds and 28% knew about magnetic stripe fraud due to recent happening of such frauds in ATMs and POS machines.

As per figure 4.23, out of 50 respondents, 34% would give up their current card for a new card if the card has wider acceptance while 26% were also ready to change cards or acquire a new one if they receive tangible promotions from banks. Also 24% would change cards if the service fees are low and 16 % cited goodwill as an incentive for change.

As per figure 4.24, out of the 30% who also acquired supplementary cards with the main card, 73% acquired it for their spouse and 20% acquired them for their children of eligible age.

Departmental Stores

As per figure 4.25, out of the 30 departmental stores visited for questionnaire, their entire (100%) customer had credit card of VISA, while 40% customer had both VISA and Master card. Many times customers with other cards also drop in and enquire whether their cards are accepted by the stores on purchasing.

As per figure 4.26, from the questionnaires collected, 34% replies were in favor of POS machine of NABIL bank, 30% possessed POS of SCBNL and 21% possessed POS of HBL. The remaining 15% had chosen NIBL for their POS machine. However, big departmental stores like Bhatbhateni were found with POS machines of more than one bank. Few departmental stores were also found accepting cards like American Express and JCB. The POS of NIBL is also gaining fast popularity because of the large number of debit cards they have managed to float in the market. Although NIBL entered only about two years before in the credit card market, it has already installed more than 500 POS network with over 300 terminals between Kathmandu and Pokhara.

As per figure 4.27, among various reasons for choosing particular issuing bank, wider acceptance of card and relationship with bank seemed to be the most dominating. 40 % acquired a card from a particular bank due to the wider acceptance of the type of credit card issued, 30% did so because of their relationship and existing transaction, 13% percent did so because of good will of bank, 10 % did so due to appropriate location of the bank, and 7% chose a particular issuer for other reasons such as low charges or commission.

As per figure 4.28, 35% had possessed card of HBL, 31% of their customers had selected Standard Chartered Bank for their credit card, 29% of the customers had chosen NABIL and remaining 5% possessed cards of NIBL. However when it comes to debit card many were found with debit cards of NIBL and NABIL.

As per figure 4.29, majority of departmental stores, i.e. 33% have acquired credit card machine due to market need and to cater to the needs of their customers, 27% said they acquired credit card facility for security, 23% cited for reliability, 17% for convenience. However several stores gave mixed answers and several reasons for which they chose to provide the facility. Most of the answers were for current trend, security, convenience and round the clock service from their acquiring banks.

As per figure 4.30, the percentage of sales through credit card was not much varied from the previous answers received from card holders. Out of 30 respondents, below 20 percent of sales were made through credit card in 80 percent departmental stores. And the remaining 20 percent departmental stores had sales in between 40 percent - 60 percent.

As per figure 4.31, 40 percent agreed that consumers started to buy more after accepting credit cards, while other 60 percent said that there was no change in buying habit of consumers after they started accepting credit cards. We can see that no one was in favor of decreasing trend of buying habit of customer after accepting credit cards.

As per figure 4.32, 17% of the departmental stores received high level of satisfaction with the services of their respective banks, 47% reported a moderate level of satisfaction, 30 % were neutral, and 7% experienced a moderate level of dissatisfaction.

Of the credit card frauds known to stores, most of them were acquainted with the general credit card frauds from banks while taking the service and from internet. Besides they were also aware of the magnetic stripe fraud that recently occurred in the country. Of the problems faced by stores, no serious problems except few cases were found.

Merchant

Out of 4.33 respondents, 0% were departmental stores, restaurant and hotels both constituted 32% (8), the remaining 20% (5) were travel agents 16% (4) were retail outlets and other business.

As per figure 4.34, out of the sample size of 25 respondents, 44% (11) had installed credit card facility, while 56% (14) had rather decided not having it.

As per figure 4.35, out of 11 respondents obtained from 25 merchants (who installed credit card facility) 64% accept Visa card, while 36% accept master card. Among them were also those who accept both card types (Visa and Master card) and few merchants, particularly the travel agents accept other cards as well like American express and JCB cards.

As per figure 4.36, out of 11 respondents, who had installed credit card facility 27.27% had acquired the service from SCBNL and the same percentage acquired it from NIBL and NABIL banks while 18.18% also acquired it from HBL.

As per figure 4.37, out of 11 respondents having credit card facility 36.36% had selected particular bank for wider acceptance of the bank's service, 27.27% for their existing transaction and relationship with banks, the same percentage of the merchants for goodwill of banks and 9.09% for other reasons.

As per figure 4.38, out of 11 respondents having credit card facility, 36.36% were influenced by other business providing credit card facility, while 27.27% had installed it through friends, relatives and neighbors. Similarly 18.18% were influenced from advertisement and the same percentages also were influenced by the marketing effort from bank staffs.

As per figure 4.39, regarding the frequency of credit card users, 20% replies were for less than 10 customers, 45% for between 10-20 customers, 30% for between 20-30 customers and only 5% for above 30 customers.

As per figure 4.40, out of 14 respondents not having credit card facility, 28.57% cited low demand for credit as reason for not installing credit facility, 21.42% cited the higher service costs (including higher limit, fees and commissions) as a crucial reason for not installing credit card, the same percentage claimed tedious process as reason for not installing and again 28.57% cited other reasons like lack of information, very few credit card users coming in their shops, their nature of business, difficulty in bargaining and no fixed price etc for not installing credit card facility.

As per figure 4.41, out of 14 respondents not having credit card facility, 50% would make cash payment even if they did not receive credit facility, while 21.43% customers would also react negatively by going to other merchants and 28.57% customers would make less amount of purchase than that of required.

Of those planning to extend credit card facility, several factors were motivating them like increasing card users and enquiry from customers, increasing trend, expansion plans, creating standards ,marketing effort from banks and other factors.

4.6 Major Findings

From the data analysis and interview taken with cardholders, merchants and bank personnel heading card department of different banks, the researcher has find out the following:

- J Our questionnaire to card users revealed that 44% of them were acquainted with credit card through broadcasting media like, TV, radio and the next effective media from which they came to know about the credit card were electronic media and print media, which comprised of 30 % and 26% respectively.
- J However those media were mainly the international broadcasting channels. On the domestic side, banks have not really made any effort on advertisement. The credit card business seems to have prospered only through bank marketing and through mouth to mouth which of course are the right way to market technical products but the effect of advertisement in this modern era can not be understated. So it is high time that bank

take up to aggressive advertising as the awareness level on credit card is very low. People still do not have confidence in cashless transactions.

- J The trend of going to supermarkets and departmental stores for family shopping is increasing in the country. The study revealed that though the frequency of credit card usage is increasing majority of customers make less than 20% payment through credit cards. People are still neutral about the relevance of credit card business taken up by the bank and feel credit card as luxury. There was a general acceptance that through the acceptance of credit card the business of merchants and stores has only increased so bank can also emphasize on this in their marketing with merchants.
- J From the study 10 % cardholders enquired use credit card in restaurant, 30 % of them use at the hotel and 34 % of them use at departmental stores. Likewise, 22 % of them use credit card at travel agency. This shows that acceptance infrastructure is growing and banks can come up with attractive schemes and offers in these places to increase the frequency of card payment as well as to take that only 20% payment through card figure up and cultivate credit card payment habit. For this bank can go for credit card financing scheme like the one launched by HBL.
- J Frequent flier points, gift certificates, or cash back as an incentive can be launched for using the card. Rewards are generally tied to purchasing an item or service on the card, which may or may not include balance transfers, cash advances, or other special uses. Depending on the type of card, rewards will generally cost the issuer between 0.25% and 2.0% of the spend. Networks like Visa or MasterCard have increased their fees to allow issuers to fund their rewards system.
- J From the study carried out many of the credit card holders have decided to hold a credit card due to increasing trend, convenience and security be it customer or merchant. But credit card is not a safe business. Many frauds have taken place in the foreign country and we can not say it is safe in Nepal. Cyber crimes are taking place in Nepal also and the recent fraud of magnetic stripe at ATMs and POS by international group at least do not suggest that the credit card business in Nepal is very safe. Banks have a number of

countermeasures at the network level, including sophisticated real-time analysis that can estimate the probability of fraud based on a number of factors.

- J Convenience was also cited as a major reason for holding credit card. But from the study it was seen that 44% respondents (card holder) encountered several problems with credit card. Among those who encountered problems with their credit card 45% faced problem of non acceptance of card by machine and 40% faced problem of non acceptance by merchant. Many times, cards are not accepted by machine due to technical problems. Similarly the merchants also do not accept more than one card. Though Visa and Master cards are accepted by many merchants these days, JCB, Diners are accepted by few merchants only. So banks need to focus on improving their acceptance infrastructure and provide immediate support in case of problems.
- J Banks should also focus on expanding their merchant network as wider acceptance of card was cited as a major reason for acquiring the credit card of particular bank. From the study 34% respondents holding credit card were ready to give up their current card for a new card if the card has wider acceptance while 26% were also ready to change cards or acquire a new one if they receive tangible promotions from banks. Also 24% would change cards if the service fees are low and 16 % cited goodwill as an incentive for change. Banks need to seriously plan to install POS machine to be widely accepted, though POS system requires heavy investment. Although NIBL entered only about two years before in the credit card market, it has already installed more than 500 POS network with over 300 terminals between Kathmandu and Pokhara. Hotels restaurants and travel agencies are also growing business in Nepal, so it is advisable to do immense promotion for the acceptance of credit card and put machine there.
- J From the study it was found that almost 56% respondents were satisfied with the limit made by the bank on their credit card where as 16 % were not satisfied. Banks have to introduce more flexible limit cards to reach to larger populace. Banks need to maintain a healthy competition regarding service fees, commissions etc. In credit card business fees can be levied for almost anything but in doing this the incentive to change cards from the cardholder should not be ignored. Card holders are very sensitive to the various fees, interest rates and promotions from the findings of this study.

- J Out of the 50 respondents asked 30% have acquired supplementary cards. 73% of them acquired it for their spouse and 20% acquired them for their children of eligible age. So banks should also emphasize on supplementary cards by offering them at flexible limit and low interest rate. Now a day the trend of studying in India and foreign country is increasing after SLC so parents would be interested in acquiring supplementary cards for their children so this segment should be considered by banks. If the bank wants to cater to younger generation.
- J Banks should study the feasibility of credit card usage in new areas and segments. Innovations and researches needs to be carried out. The strategy and planning department should be the one working more on credit card promotions and business development in Nepal. Banks should take a step ahead in promoting card business in Nepal. For instance, national delegates on official tours, say for instance on regional or international sports events, conferences etc. can be provided with credit cards for the length of stay abroad.
- J Credit card facility, 28.57% cited low demand for credit as reason for not installing credit facility, 21.42% cited the higher service costs. As a crucial reason for not installing credit card, the same percentage claimed tedious process as reason for not installing and again 28.57% cited other reasons like lack of information, very few credit card users coming in their shops, their nature of business, difficulty in bargaining and no fixed price etc for not installing credit card facility.
- J So what can be done to tap these merchants is a question to banks. Banks can emphasize on increasing trend of credit card usage and the increase in volume of sales of merchants after credit card acceptance as a motivating theme to convince these group. Merchants still do believe that the credit card process is tedious which in fact is not.
- J Small business owners particularly the kirana passages need small credit for short time to acquire goods etc. So they can also afford credit card. Banks can issue them a low interest card with flexible limits also. Recently in India Bank of Rajasthan has launched Kisan Credit Cards for farmers (Kisan) which is a form of micro credit programme.

Hence Nepalese card business has a plenty to learn from Indian credit card market. The feasibility and viability of such projects should be studied by banks.

- J Risk is the major element of any kind of business. Card business is also a risky business. Though profitability is very high, the default chances from cardholder is also very high because cards are issued merely on the basis of salary sheet and few identification documents unlike in foreign countries where people can be easily traced by their Identification Number or Tax Code. Among the three banks, HBL has the highest risk in case of issuance but in case of merchant NABIL has highest risk in comparison to other banks.

- J Correlation shows the relationship between two or more variables. In this study, whether the card users, merchant and the industry are correlated or not is studied. Analyzing the result it shows the all concerned banks are positively and in fact highly correlated in case of both card users and merchants. This shows all the card issuing banks are moving in similar direction and competition is high.

- J SCBNL has started issuing credit cards to non accountholders as well outside the valley. So banks may have to relax few of their requirements without compromising on the information needed to be on safe side and prevent defaults and frauds. Hence it can be concluded that the future of credit card in Nepal is promising and in future many other bank might take up this business. However, very much depends upon the effort from banks and the way they promote this business to the general mass.

CHAPTER – V

SUMMARY, CONCLUSION AND RECOMMENDATIONS

5.1 Summary

Many developed countries today have entered into a kind of cashless transactions. Credit cards have almost become a synonym for cash. As well as convenient, accessible credit, credit cards offer consumers an easy way to track expenses, which is necessary for both monitoring personal expenditures and the tracking of work-related expenses for taxation and reimbursement purposes. Credit cards are accepted worldwide, and are available with a large variety of credit limits, repayment arrangement, and other perks (such as rewards schemes in which points earned by purchasing goods with the card can be redeemed for further goods and services or credit card cash back).

Hence most of the frequent travelers who visit abroad must have encountered much bitter experience without a card. In most of the big hotels and restaurants of the developed nations, credit card holders are materialistically valued more than those who produce hard cash. In many cases hotels even hesitate to check-in those without payment cards. Renting a car in North America without a card is almost impossible. Credit cards are not only used to make purchase but a gamut of other services are also available, to a name a few are cash advances, making a utility payments, securing all the security data, privilege award etc, and most importantly, above all, it is very helpful to cope with emergency situations. Credit card is one of most vigorously sought after and growing business in the world. Credit card is a plastic card which allows the holder to purchase goods and services on credit and is mostly issued by banks or financial institutions. It is such a service where cardholder can enjoy credit facility even though he doesn't have sufficient balance in his account. It is the concept of buy now and pay later. Each month, the credit card user is sent a statement indicating the purchases undertaken with the card, any outstanding fees, and the total amount owed. After receiving the statement, the cardholder may dispute any charges that he or she thinks are incorrect otherwise, the cardholder must pay a defined minimum proportion of the bill by a due date, or may choose to pay a higher amount up to the entire amount owed. The credit

provider charges interest on the amount owed (typically at a much higher rate than most other forms of debt).

Credit cards also minimize the risk associated with carrying money like loss of money, pick pocketing etc and also offers many discount and award schemes. From a merchant's points of view, it will increase the sales of the merchant as the trend today is of plastic money and also he gets rid from taking collected money to banks for deposits. Everything happens electronically and the merchants account gets credited very shortly after every purchases. Also it provides him safety from thefts by its own employee as well as looters.

Even though Credit card has so many advantages, the card business in Nepal has not gained its momentum as it has in other nations. Credit card business prospers in a volume driven nation where consumer financing plays a vital role to boost the economy of the nation. As stated earlier Nepalese populace have not yet developed their banking habit, they are mostly happy with hard cash and in most of the cases, even our highly educated ones, do not at all have the sagacity regarding credit cards. Another important factor which has constrained card business in Nepal is the acceptance infrastructure. Most of the merchants are departmental stores, travel agencies, big hotels etc; most which cater the needs of tourist and higher /upper middle class people. Nepalese people are still not used to visiting sophisticated departmental stores, travel agencies, and big restaurants though the trend is slowly increasing. Cards are not accepted at those places where most of the fixed income earners go for shopping such as Ason, Fancy Stores, our local grocery store (kirana pasal) etc. Again unlike other nations, cards in Nepal cannot be used for making payments for regular expenses such as utility fees, school fees, membership fees etc though bank has started online banking and acting as agents for utility payment collections in money. Hence, acceptance structure is an important factor and in Nepal's case, lack of adequate acceptance is one of key factor which has hindered the growth of card business.

Since the usage of credit card is still considered as a novel concept in Nepal its usage is primarily limited to a selected people, so an in-depth study and research has to be made on this sector. This research has been undertaken in that sense and it attempts to determine ways of retaining present customers while attracting future customers as well. The banks

which are involved in credit card business, NABIL, HBL, SCBNL, their present condition in terms of card issuance and merchant hold are analyzed in this research. Nepal Investment Bank has not been included in the analysis which is new in the credit card market though it is the market leader in the debit card market. For the analysis of data standard deviation, correlation, and trend analysis are used as statistical tools but due to unavailability of financial and other data due to confidentiality maintained by banks, a complete picture could not be drawn. However, direct interviews and questionnaires were also held and the outcomes are displayed which reveals the current situation and future prospects of card business in Nepal as well as the problems facing credit card market are also analyzed.

Growth rate or movement of card business is different from each other and from previous year as well. HBL has highest growth and SCBNL has the lowest growth in case of issuance or users but in case of merchant NABIL has the highest growth rate and SCBNL has the lowest growth rate. The position of HBL looks quite satisfactory. It has been able to maintain its high growth rate in card issuance. It may be attributed to issuance of Master card as well as the cheapest domestic credit card it offers in the market in terms of annual and subscription fees, the various upcoming products and the offers and various marketing strategies the bank has adopted. Similarly on merchant side as well, it has managed to increase its hold compared to previous year. HBL has signed special tie-up agreements with various dealers in Nepal to make the recently introduced scheme of consumer financing through credit card successful for the ease and comfort of the Customers. Under this scheme, HBL credit card holders can avail financing for various products from the Bank's merchants. SCBNL seems to issue credit cards on a much secured basis to selected individuals particularly by eyeing on big corporate houses. So no significant change in the card issue and merchant hold, just a steady growth rate similar to previous year seem to apply with the bank. Besides, the bank has good reputation being a multinational bank of global standard. But in totality all three banks seem to have a fair share in the credit card market. Competition is not that fierce but still competition exists in terms of low fees and penal, cash advance fees, wider acceptance and different prize offers and schemes like travel and medical insurance, loyalty programs, discounts etc.

5.2 Conclusion

By and large, proper marketing plan, a better strategy and a smooth implementation are the basic ingredients of any successful business. So to operate any profitable business, lots of homework should be done. Various studies revealed that credit card business is very profitable and is carried out in very monitored and controllable manner. Though it has been many years since credit card business started in Nepal, it has not been able to take much pace but nevertheless the growth rate has been satisfactory considering the various situations in the country. The profitability of card business in Nepal can not be undermined. Banking habit among people is increasing and debit card market is also expanding. This may be due to banks and organizations focusing on cultivating the banking habits for their employees by making salary payments through bank account opening which is a rather win-win situation for all. With it the infrastructure is also building and POS machines are also increasing. From the statistical analysis and outcomes of questionnaire also, it is obvious that credit card business is in optimistic track. In spite of the high profitability in credit card business only four banks are involved in this business among lots of commercial banks running in the country. The trend of credit card is increasing which becomes evident with the steady and positive growth rate that the banks involved in card business have been able to maintain amidst all the happenings in the country. All banks are increasing the number of their cardholders and merchants so there is high prospect and growing market for credit card business especially acquiring business nowadays. People are being aware on the advantages of holding a credit card which is gradually progressing in industrialization process and increasing income level among the higher and middle class society. So the possibilities of other banks or financial institutions entering in this field can not be underlined. So, in conclusion, Nepalese credit card industry is moving ahead and in increasing trend. We can only hope for the situation of country to improve to fuel this business of credit card in Nepal.

5.3 Recommendation

Nepal too needs to develop the banking habits of its people. We just cannot make any more unsubstantial and detrimentally indigenous excuses. We do not want to be humiliated in the global arena and put ourselves in a very awkward plight by saying "No" when asked "Sir Do you have a credit card?" Nepal just cannot isolate itself with the fast moving world,

where everything is changing day by day. The world is heating towards e-business and Nepal too is moving in the same direction. Without payment cards e-commerce is almost handicapped.

Will the card market keep up to current growth rate in terms of card users and merchant or not is predicted through time series analysis by using least square method and the result shows optimistic results. All the banks show increased number of card users and merchants than previous year and the conditions could be better provided the country takes economic pace with the aftermath of currently held Constituent Assembly polls. Although the credit card business started in Nepal more than a decade now, the industry has not been able to fully penetrate the market. Credit card still remains the niche area in banking which only few banks have managed to take up. The acquiring side has been badly hurt by the on going slump in the tourism sector and particularly the instable political front. Besides these obvious reasons, one critical factor which negatively governs the credit card business is the societal factors. But the recent market growth of banks in terms of VISA debit cards and increased banking practice, we can only look for the brighter side in the credit card market to come in the future. The recent influx of commercial banks in the country and increased competition to provide excellence in banking and extra banking facilities only point out toward higher prospect of this credit card business in the days to come.

Rather it helps merchants save their time, effort and gives them peace of mind as well because credit card processing is safe and their security concerns are also protected. They don't need to hold cash in their locker (tijori) and be worried about it. Lack of information should not be the factor for not having credit card facility. Banks can expand their marketing effort on the side of merchant to acquaint them on credit card uses, its benefits and the disbeliefs hold by merchant and offer them customized services and tailored solutions. Few merchants in our study were dissatisfied with the credit card facility they acquired. Banks should immediately focus attention to them and identify the problems with them. Since merchants have to pay commissions ranging from 1.5 to 3.5% commissions to banks on their transaction amount, merchants often have to compromise their profit margin or else loose their customer and goodwill. This is often the case in merchants where there is

no fixed price system and customers have no idea on the cost to merchants so the bargaining becomes little difficult.

Majority of the respondent surveyed, own their own personal business. In fact 48% had business of their own, 28 % worked in private sector and this was followed by student at 8% and public sector employee at 16%. Since the percentage of credit card acquired by the professionals seem to be low, banks should focus on this group which is increasing in numbers and their income level is also increasing. Banks need to apply direct and cross marketing to capture this segment. Nowadays most organizations open a bank account for their staff to facilitate salary payments.

Although the business is heavily dependent on the external factors, which are not under the control of the card players itself, every step should be taken to boost the immature local market. It has been seen that the issuance business is more profitable than the acquiring business and since the acquiring business is mostly dependent on the performance of tourism industry which itself is facing the toughest time, possible efforts should be initiated by banks to get local customers in the card business by luring them by the associated core benefits of credit cards and introducing more and more attractive scheme and packages.

BIBLIOGRAPHY

Books:

- Arondekar, A.M., Agrawal, O.P., Nath, Dr. Onkar and Khandelwal, P.S. (2007), *Principles of Banking*. New Delhi: Macmillan India Ltd.
- Bajracharya B.C. (1998), *Business Statistics and Mathematics*. Kathmandu: M.K. Publishers and Distributers.
- Freund, J.E. (2000), *Mathematical Statistics*. New Delhi: Prentice-Hall of India Private Limited.
- Himalayan Bank Limited. (2005/06), *Annual Report*. Kathmandu: Himalayan Bank Limited.
- Joshi. P.R. (2001), *Research Methology* Kathmandu: Buddha Academic Publishers and distributors Pvt. Ltd.
- K.C. Shekhar (1994), *Banking Theory and Practice*. New Delhi: Vikas Publication House Pvt. Ltd.
- Kothari, C.R. (1992), *Research Methodology and Techniques*, New Delhi: Vikas Publication Co. Ltd.
- Levin, R.I. & Rubin, D.S. (2001), *Statistics for Management*. New Delhi: Prentice Hall of India Private Limited.
- NABIL Bank Limited (2006/07). *Annual Report*. Kathmandu: NABIL Bank Limited.
- Shrestha, M.S. (2007). *Fundamentals of Banking*. Kathmandu: Buddha Academic Publishers and Distributers Pvt. Ltd.
- Shrestha, S. and Silwal, D.P. (2001), *Statistical Methods in Management*. Kathmandu: Taleju Prakashan.

Standard Chartered Bank Limited (2006/07), *Annual Report and Accounts*. Kathmandu:
Standard Chartered Bank Limited.

Sthapit A. Gautam H, Joshi P. R., Dangol P. M. (2004) *Statistical Methods (2nd edition)*,
Buddha Academic Publishers, Kathmandu.

Vaidhya, S. (2002), *Banking and Insurance Management*. Kathmandu: Taleju Prakashan.

Wolff, H.K. and Pant, P.R. (1999), *Social Science Research and Thesis Writing*.
Kathmandu: Buddha Academic Enterprises Pvt. Ltd.

Wolff H. K. and Pant P.R. (1999), *Social Science Research and Thesis writing*. Kathmandu:
Buddha Academic Publishers and Enterprises Pvt. Ltd.

Journals, Report and Articles

Brochure, (2006): Nepal Investment Bank Limited

Card Application Form: Nepal Investment Bank Limited

Card Leaflets: Nepal Investment Bank Limited

Cambined Card Bulletin, Visa (2008)

Consolidated Data Report: Nepal Card Member Forum (2008)

Unpublished Thesis

Hada, S. (2006), *A study on Credit card Practices in Nepal*, An unpublished thesis
Shanker Dev Campus, Tribhuvan University.

Joshi, S. (2007), *Credit Card Market in Nepal*. Unpublished Master's Degree Thesis,
Shanker Dev Campus T.U.

Joshi, R. (2002), *Investors Problem in choice of optimum portfolio of Stock exchange in
Nepal*. Unpublished Master's Degree Thesis, Shanker Dev Campus T.U.

- Pandey M. (2002), *Legal and Institutional Arrangements for Investors Protection in Nepalese Capital Market*. Unpublished Master's Degree Thesis, Shanker Dev Campus. T. U.
- Pandey, R. (2009), *Master card business in Nepal* An unpublished thesis Shanker Dev Campus, Tribhuvan University.
- Shrestha, K. (2008), *Credit card business in Nepal with Reference to Himalayan Bank Limited*. Unpublished Master's Degree Thesis, Shanker Dev Campus T.U.
- Sirish, N. (2009), *A Study About the Trends of Credit Card Business in Nepalese Banking Sector*. Kathmandu: An Unpublished Masters Degree Thesis Submitted to Tribhuvan University.
- Thapa, C. B. (2002), *The Prospect and challenges of credit card Business in the banking sector of Nepal*. Unpublished Master Degree Thesis, Shanker Dev Campus.
- Thapa, C. B. (2002), *The prospect and Challenges of Credit Card Business in the Banking sector of Nepal*. An unpublished thesis Shanker Dev Campus, Tribhuvan University.
- Thapa, C.B. (2002), *The Prospects and Challenges of Credit Card Business in the Banking Sector of Nepal*. Kathmandu: An Unpublished Masters Degree Thesis Submitted to Shanker Dev Campus, T.U.

Websites:

- J www.nabilbank.com.np2067/9/25
- J www.scbnl.com.2067/9/25
- J www.hbl.com.np2067/9/25
- J www.visacard.com2067/9/15
- J www.debitcard.com2067/8/30
- J www.nrb.com.np2067/10/25

Appendix-I

CASE STUDY ON COMPREHENSIVE ANALYSIS OF VISA DEBIT CARD (VISA ELECTRON)

This Questionnaire is prepared by a student for the purpose of research; information provided by you will be of big help for her study please help her by giving the honest responses to these questions.

(Merchant's Response)

Q1) Do you accept cards?

- a) Yes b) No

Q2) Which Cards do you accept?

- a) Visa cards b) Master cards c) Both d) Others.....

Q4) How convenient do you find accepting the cards?

- a) Very convenient b) Convenient c) Not-so Convenient

Q5) What do you prefer as mode of payment

- a) Card b) Cash

Q6) How often do customers use cards for payment?

- a) Always b) Very often c) Rarely d) Never

Q7) Do you think accepting Debit/Credit card has benefits?

- a) Yes b) No

Q8) If your answer to question no.6 is yes, which of these benefits to you are significant?

- a) Increase sales volume b) Convenience
c) Instant payment d) Banking Facilities

Q9) Do you think there are any disadvantages accepting Debit/Credit cards, if yes which of the following do you consider significant?

- a) Risky b) Expensive e) Others.....
- c) Time consuming d) Insecure

Q10) Do you encourage the usage of Debit/Credit cards?

- a) Highly b) Neutral c) Not at all

Q11) What percentage of commission do you pay to the bank?

- a) 1.0% - 2.0% b) 2.1% to 3.0% c) 3.1 to 4.0% d) don't pay at all

Q12) When does your card payment get realized from your bank?

- a) The same day b) the next day c) within one week d) more than a week

Q13) Have you ever encountered a problematic cardholder?

- a) Yes b) No c) Can't say

Q14) Have you ever encountered a fraud cardholder?

- a) Yes b) No c) Can't say

Q15) Has your bank ever refused to reimburse your card payment?

- a) Yes b) No c) Can't say

Q16) With whom do you prefer doing Card Business?

- a) Nabil b) Alpine c) SCBN d) NIBL e) HBL f) Can't say

**CASE STUDY ON COMPREHENSIVE ANALYSIS OF VISA DEBIT CARD
(VISA ELECTRON)**

This Questionnaire is prepared by a student for the purpose of research; information provided by you will be of big help for her studies please help her by giving the honest responses to these questions.

(Cardholder's Response)

Q1. Which age group do you fall under?

- a) Below18 b) 18-25 c) 25-45 d) Above 45.

Q2. Which profession are you in?

- a) Student b) Business Person c) Service d) Others

Q.3) Do you use any kinds of bank cards?

- a) Yes b) No

Q4) If your answer in Q.3 is yes, which card(s) do you use

- a) Debit/ ATM Card b) Credit Card c) Prepaid Card D) If others please specify.....

Q5) which card do you own?

- a) Master card b) Visa Card c) SCT Card d) Others

Q6) Which bank's card are you currently using?

- a) SCBNL b) NABIL c) HBL d) NIBL e) If others please specify.....

Q7) Do you feel convenient while using your card?

- a) Very much b) Some what c) Neutral d) Dislike

Q8) How do you feel about your bank's card service?

a) Very good b) Good c) Average d) Not good e) Very bad

Q9) When you present your card (s) to merchants do they accept it with ease?

a) Yes b) No c) Hesitate

Q10) which of these do you consider the benefit of using cards?

a) Convenience b) Secured c) Credit availability d) Others.....

Q11) Do you think holding cards have disadvantages, if yes which of these do you consider significant?

a) Risky b) Expensive c) Surcharges d) Malfunctioning e) others

Q.12) Holding a card is a symbol of social status" do you agree?

a) Strongly Agree b) Agree c) Undecided d) Disagree
e) Strongly disagree

APPENDIX-2

Forecasting user Trend of Credit card Business for NABIL Bank.

$$x = (\sum x)/n = 2007$$

Using Least square equation,

$$y = a + bx \dots\dots\dots (i)$$

$$y = na + b\sum x \dots\dots\dots (ii)$$

$$xy = a\sum x + b\sum x^2 \dots\dots\dots (iii)$$

Substituting the value in eq (ii) & (iii)

$$y = na + b\sum x \dots\dots (ii)$$

$$31000 = 5a + b0$$

$$\text{Or, } a = \frac{31000}{5}$$

$$a = 6200$$

Again

$$\sum xy = a\sum x + b\sum x^2$$

$$6930 = a \times 0 + b \times 10$$

$$b = 693$$

Now

The required least square equation ($y = a + bx$)

$$y = 6200 + 693x$$

So user Trend of credit card of NABIL banks for 2012, 2013 and 2014 and as follows:-

$$\text{i.e. } x_1 = 2012$$

$$x_2 = 2013$$

$$x_3 = 2014$$

$$\text{Hence } x_1 = x_1 \bar{x}$$

$$= 2012 - 2007$$

$$= 5$$

Substituting the value in least square equations

$$y = 6200 + 693 \times 5$$

$$y_{2012} = 9665$$

When,

$$x_2 = 2013$$

$$x_2 = 2013 - 2007$$

$$= 6$$

$$y_{2013} = 6200 + 693 \times 6$$

$$= 10358$$

$$y_{2014} = 6200 + 693 \times 7 \quad (x_3 = 2014 - 2007 = 7)$$

$$= 11051$$

Using least square equation.

$$y = a + bx \dots \dots \dots (i)$$

$$\sum y = na + b \sum x \dots \dots \dots (ii)$$

$$\sum xy = a \sum x + b \sum x^2 \dots \dots \dots (iii)$$

Substituting the value in eq. (ii) & (iii)

$$\sum y = na + b \sum x$$

$$36260 = 5a + 6b$$

$$a = 7252$$

Again,

$$\sum xy = a \sum x + b \sum x^2$$

$$15491 = a \times 0 + b \times 10$$

$$b = 1549.1$$

Now,

The required least square equation ($y = a + bx$)

$$y = 7252 \pm 1549.1x$$

So user Trend of credit care of HBL bank for 2012, 2013, 2014 and as follows :-

$$i.e x_1 = 2012$$

$$x_2 = 2013$$

$$x_3 = 2014$$

$$\text{Her } x_1 = x - \bar{x}$$

$$= 2012 - 2007$$

$$= 5$$

Substituting the value in least square equation

$$y = 7252 + 1549.1 \times 5$$

$$y_{2012} = 14997.5$$

$$x_2 = x_2 - \bar{x} \quad y = 7252 + 1549.1 \times 6$$

$$= 2013 - 2007 = 16546.6$$

$$x_3 = x_3 - \bar{x} \quad y_{2013} = 16546.6$$

$$= 2014 - 2007$$

$$= 7$$

$$y = 7252 + 1549.1 \times 7$$

$$= 18095.7$$

$$y_{2014} = 18095.7$$

Using least square equation

$$y = a + bx \dots\dots\dots (i)$$

$$\Sigma y = a + na + b\Sigma x \dots\dots\dots (ii)$$

$$\Sigma xy = a\Sigma x + b\Sigma x^2 \dots\dots\dots (iii)$$

Substituting the value in eq (ii) & (iii)

$$\Sigma y = na + b\Sigma x$$

$$40815 = 5a + b \times 0$$

$$a = 8163$$

Again,

$$\Sigma xy = a\Sigma y = b\Sigma x^2$$

$$6740 = a \times 0 + b \times 10$$

$$b = 674$$

Now, The required least square equation

$$y = a + bx$$

$$\text{i.e } y = 8163 + 674x$$

So user trend of credit care of SCBNL banks for 2012, 2013 and 2014 and as follows :-

$$\text{i.e } x_1 = 2012$$

$$x_2 = 2013$$

$$x_3 = 2014$$

$$\text{Hence } x_1 = x_1 - \bar{x}$$

$$= 2012 - 2007$$

$$= 5$$

$$x_2 = x_2 - \bar{x}$$

$$= 2013 - 2007$$

$$= 6$$

$$x_3 = x_3 - \bar{x}$$

$$= 2014 - 2007$$

$$= 7$$

Substituting the value in least square equation

$$y = a + bx$$

$$= 8163 + 674x$$

$$y_{2012} = 8163 + 674 \times 5$$

$$y_{2012} = 11533$$

$$y_{2013} = 8163 + 674 \times 6$$

$$= 12207$$

$$y_{2014} = 8163 + 674 \times 7$$

$$= 12881$$