

CHAPTER I

INTRODUCTION

1.1 Background

When dawn breaks over the Himalayas, it is the most beautiful sight in Nepal, fit for the gods to behold and do their *Namaskar* to the Goddess of dawn. For the Aryans the most loved things were perceived as Goddesses. Dawn, the herald of the sun, was the bringer of sustenance to a predominant pastoral and agricultural society. The mother of gods was their compliment to motherhood; *Saraswati*, the goddess of learning was the daughter of *Brahma* from who emanated all creation. It is also a question of where they belong to or are born. That determines their status, with a clear division between the rich and the poor. Her story, for many areas of her life and in many circumstances is silent as she was not supposed, in some sphere to have seen, heard of written about (Seth, 2000)

Development being the progressive transformation of the society has to be inclusive, equitable and sustainable stated somewhat differently, the development that ignores the inclusiveness and equity is diametrically unsustainable. Given this established paradigm of the development ensuring gender equity by integrating both man and women in the process of transforming the society is of paramount importance in the contemporary world (Uprety, 2004).

Nepal's rural setting is a complex structure of social system consisting of hierarchical social structure that includes different economic and social classes, oppressive caste system and gender discrimination, which is developed from feudal, bureaucratic and caste and gender biased interests. The difference between rich and poor people, upper and lower caste, men and women create situation for social conflicts and discrimination to have access and control over the resources. The main objective of this study is to describe the socio-

economic condition of users in the area, find the status of inclusion of poor, women and *Dalits* in participation of decision-making forums, membership in CF and access to information and opportunities, explore the condition of inclusion of poor, women and *Dalits* in benefit sharing and fund mobilization mechanism among CFUG members, and assess the existing situation of inclusion of poor, women and *Dalits* in decision making. Despite a variety of government interventions, the ethnic minorities continue to be marginalized. There is hardly any awareness, understanding and planning activities by the government and extension and research agencies in terms of social and gender discrimination (Baral, 1993: Pp 34-35)

The two important factors to the success of community forest management are gender and equity, which allow women and others marginalized groups to participate effectively in the processes of good governance in forests. Though decision making is an important function in forest user groups and requires the participation of the whole community in the practice. Disadvantaged groups are frequently marginalized in Nepal for instances, women must work at home and the poor must work for wages, thus they have spare time. These obligations interfered with their ability to attend meeting and so they were less aware of the decision being made (K.C., 2007: Pp 28)

Nepal's forest management program included the formation and mobilization of users' groups, the preparation of an operational plan, and the handing over of forest areas. Most of the Nepali population depended on forest resources and over 75 percent depended on forest for their daily fuels requirements. The growing population had increased the pressure on forest resources and without adequate local support and peoples' participation, the efforts of the government and NGOs would fail. Due to the socio-economic condition of Nepal, women and the poor were the ones most directly dependent on the forest resources. Since forest patches managed by women users appeared to be relatively better managed and productive, future programs planned to involve more women (ICIMOD, 1995: Pp -18).

Irrespective of the contribution and commitment of the women, the state often remains indifferent to their concerns. It neither initiates women – friendly technological innovations and disseminations nor does it acknowledge the knowledge and skill of women. Social life of the rural folk of Nepal is greatly influenced by the state supported technology development, which is gender blind as well as biased towards the rich. They observe that the poor and the uneducated, especially the women have restricted access to both traditional and modern hybrid varieties (Ronnie, 2006: Pp-121).

Participatory forest management has emerged as a key for sustainable management in the Himalayas. While we recognize the role of government and non-governmental institutions in promoting this paradigm, mountain communities have played a major role in asserting their rights on forest resources and women and men from the mountain areas have been at the forefront of the forest management the process democratization and decentralization and the emergences of people oriented approaches provides us with new opportunities to reflect on what strategies need to be evolved to unleash the latent potentials of community level institutions So, that they can grow into effective vehicles of mountain development. Participatory forest management has emerged as an alternative strategy for sustainable management of forest resources in Himalayan regions. Small village based community organization have played an important role in asserting their rights to forest resources and in protecting and managing their local environment. Women participation was affirmatively encouraged (ICIMOD, 1995: Pp-24).

Form the initial stage of CF practice, women's participation was ignored in CF planning cycle, so their activities were not successful (K.C., 2007). Realizing this, gradually the CF policies were change and priority was give to women and their participation in CF activities. Women's participation in the CFUG may be classified in two broad categories namely participation in implementation of CF activities, as in the conservation and exploitation of resources, and

participation in decision making, participation in the implementation of activities does not necessarily means effective participation in decision making. Effective participation requires that the people's views are effectively taken into account and their views influence decision making (Agrawal, 1997: Pp-52).

There is popular saying in Nepali which goes '*Hariyo Ban Nepal ko Dhan*' literally, it means the green forest is the wealth of Nepal. If one examines the frequent shift in government policies and strategies in relation to the development and conservation of forests and other natural resources of Nepal, it appears that the value of such resources has certainly not been underestimated by the planners and policy makers. Similarly, it is evident from behaviours, practices and attitudes of the people in Nepal that the natural resources, especially forest have been very important for their subsistence. Given this Nepal's forest the wealth of the nation, intrigues many. How should it be managed properly? How should the issues of female be addressed: what should be the role of female in decision making? How is benefit shared among the user groups?

1.2 Statement of the Problem

Although CF has been successful in terms of their institutional capacity to get people organized and form capital at group level, perhaps the most critical in terms of livelihoods and the relatively weak in generation of financial capital for the forest dependent poor, women and *Dalits*. While trends towards resource degradation have been arrested and in many cases forest cover is reported to be improved (Shahi, 2000: Pp-41), the livelihoods of the local forest dependent communities, particularly the poor and disadvantaged, have not improved as expected. Community Forestry is criticized for not being able to address the needs of women, lower caste and poorer segment of the society who are the real users of forest (Hobley, 1991: Pp-87). Emerging evidence indicates that the decision-making process in most of the CFUGs is captured by wealthier and upper caste male and the interests and concerns of *poor, women*

and *Dalits*, who depend more on common property resources for their livelihood, are not adequately considered in decision-making process (Bhatta, 2002: Pp-28). The poor, disadvantaged and socially marginalized groups are very often ignored and excluded from participating in decision-making in most communities (Gilmour and Fisher, 1991: Pp-75). Although community forestry guideline advocates equal representation of male and female in executive committee but in practice minorities groups (poor women and disadvantaged groups) are not adequately represented in executive committee (Regmi, N., 2007: Pp-45). Many studies have argued that the present practice of community forestry in Nepal is less favorable to the poor than wealthier households and poor, and disadvantaged households lost more from switch to CF (Bhattarai and Ojha 1999: Pp-24). Only a few studies have been conducted regarding status of inclusion of women in community forestry. But a lot is in relation to the community forestry issues, but they fail to address the status of the females properly, so the researcher had planned to carry this research mainly focusing to find the answer of following questions;

-) What is the status of women in the decision making process in CFUGs?
-) What is the socio-economic status of the users groups in the area?
-) What is the role of executive committee for the inclusion of female?
-) How is the benefit-sharing process among the user groups?
-) Did the females feel free in expressing their view in meeting?
-) Is the voice of female listened by the executive committee?
-) What is the method of information sharing by the user groups?
-) What is the situation of female participation in the meeting?
-) Is the work and responsibility of the user groups stated clearly in the committee?
-) What is the awareness status of female to their right and responsibility regarding community forest as a user?

1.3 Objectives of the Study

The general objective of the study is assessing the social inclusion of females in the community forestry system. The specific objectives of the study are given here under;

- 1 To explain the socio-economic profile of Users in the area.
- 2 To analyze the representation of women in decision making and benefit sharing.
- 3 To analyze the access to information and opportunities of the females.

1.4 Definitions of the Terms

Female: The women who are involved in the User groups' of community forestry of studied forest as a member of it.

User Groups: The people who share the benefits of the given community forestry and are responsible for the conservation of the forest.

Inclusion: The involvement of females in the institutionalized development the CFs in the areas or the policy adopted for the involvement of the female in the management of the community forestry.

Transformation: The change in the attitude and mentality of the women in regard to right related to the benefit sharing.

Ban Pale: The guard to look after the forest appointed by the decision of the users groups.

Ban kuruwa: The person who is given the task to look after the forest.

1.5 Limitation of the Study

Basically, this is an academic study. It has been undertaken within the boundaries of limited time, budget and other resources. The study concerned with the issues related to the females and their socio-economic condition in Cf management. The research is based on fully descriptive method. The finding and conclusion drawn from this study may not be widely generalized exactly in

the same manner for other cases of inclusion related issues in the community forestry. Obviously, some generalization can be made while considering the cases of female's conditions in the community forestry in Nepal. It can also be generalized in the same geographical/ ecological condition and same caste and religious situation.

1.6 Basic Assumption of the Study

The following were the basic assumptions which were set before the field work.

-) The participation of the females is just to meet the quorum required for the organizational setup.
-) The voice of the female are not given due importance.
-) The females have very low role in the decision making process.
-) The benefits are shared with the instruction of the wealthy people.
-) The user groups are not properly informed about the plan and policies formulated by the executive committee.

1.7 Significance of the Study

We cannot undermine the importance of the women in the social development. Though the study is conducted in a small area, it will help to understand the condition of the female in the decision making process in the community forestry in the rural setting of Nepal. It will help to understand the role of female in the society guided by the Hindu ideology. This study also will add one more literature in relation to the Females' condition in the community forest management. The findings of the study are helpful to the gender activists and the planners to implement the program

1.8 Study Area

The study area of this study will be the "**Tirekot Community Forest**" one of the Community forests of Hemja V.D.C. This Community forest belongs to the locals' people of ward no. 7, 8 and 9, which is located towards the Northwest of this V.D.C. and is 10km far from the zonal headquarter of western development region; Pokhara and is situated at 860-1415m height from sea

level. In Nepal culturally; it can be called a mosaic of Hindu, Buddhist, and Muslim culture (VDC Profile 2003). The selected Community forest of the V.D.C is very important from the socio-cultural point of view because it is control by the Brahmin society which does not give more emphasis on the female involvement in the decision making process.

The Nepal's forests and other natural resources are managed profoundly important for the well being of the people, given day-to- day life. It is now well recognized, that to ensure sustainable forest management the people must closely be concerned. The forests users must be actively involved and be able to take decision and carry out tasks and also benefit.

1.9 Organization of the Study

The current research is mainly divided into seven chapters as per the nature of the study. It starts with the chapter of introduction and ends with the summary, conclusion and recommendation. The **first** chapter includes the introduction part along with the statement of the problem, objectives of the study, definition of the terms, significance of the study, definition of the terms and significance of the study. Relevant literature has been reviewed in chapter **two**, which deals with theoretical overviews and review of related literature. The **third** chapter includes the research methods and the **fourth** chapter contains the socio-economic and demographic background of the study site.

Similarly, chapter **five** deals with the information and benefit sharing system among the female whereas **sixth** chapter is about the women and the decision making process. In the same way, the **seventh** or the last chapter contains the summary, finding and conclusion. At last, interview schedule, FGD checklists and name of the participants for the sessions, and pictures are presented.

CHAPTER II

LITERATURE REVIEW

2.1 Theoretical Overview

2.1.1 Theoretical Review on Gender

Many of us usually use the terms 'Sex' and 'Gender' interchangeably, but they both have different definitions. Equating them can lead to the belief that differences in traits and behaviours of men and women are directly due to their biological variation, then the traits or the behaviours actually may be shaped by culture. Sex defines the biological difference in the genetic composition and reproductive anatomy and functions. All mammalian species have two biological forms and are labeled as male or female accordingly. In other words, the sex of a person refers to biological forms; to physical traits such as chromosomes, hormones, genitalia and the secondary sex characteristics; which leads to the determination of people as male or female.

Gender on the other hand, is what culture makes out of the 'raw materials' of the biological sex. A person's gender refers to the system of socially ascribed role determined mainly by the cultural and the social context in which they live. Similarly, we use gender cues to tell us how to interact socially. Based on how a person appears and acts, we decide whether that person is male or female and act accordingly. All human societies make social distinctions based on gender. We can say that gender creates a categorizing system that shaped the relations between men and women and a system of social classification that influences access to power and resources (Belbase and Pyakural 2000: Pp-42).

Gender perspective is very suitable to understand and analyze the distinction between male and female in the society. The social reality is only observed by learning the social relationship of man and women. In this context a new approach had developed in Sociology /Anthropology which is called feminist Sociology/ Anthropology. This model not only studies the women's role in society but it also focused on the unequal gendered relationship in society. the

concept of gender equality came after 1950s after the women participation was thought equally important in the development strategies. The participation of women in development plays very important role in the social and culture development.

2.1.2 Community Forest in Nepal

Community forest in Nepal is amongst the successful programs of Government of Nepal, which was introduced in Nepal in 1987. Nepal's community forestry program is recognized as strategies to improve the condition of forest and to satisfy the household needs of forest products in the rural areas. Community involves handing over the rights to use and manage the forest to local people, who have traditionally used the forest and are willing to accept management responsibility. Community forestry process includes the formation of community forest user-group (CFUGs). The preparation of operation plans, plantation where appropriate and training to strengthen the organizational capacity of CFUGs and to improve the skills of fields staffs and the users in forest management (Gautam, 2005: Pp-61). The community forestry programs being implemented in Nepal is essentially a strategy adopted to bring about socio-economic change and development. In the rural societies though intervention in regarded to the management of forests (Chhetry and Jackson, 1994: Pp-43). It is assumed that community forestry has the potential to relieve the government of a lot of responsibilities of protecting and managing the forests by employing forest guards, watchers etc.

Community forestry in Nepal has much longer history than commonly acknowledged in many places in the hills of Nepal, it is common to come across a '*Ban Pale*' or '*Paleko Ban*' etc. all referring to particular patches of forest or site protected by the people. Moreover, there are numerous forests in Nepal which have been referred to as forests of certain villages of ethnic/caste groups.

2.1.3 Female and Role in Community Forest Management

Women and forestry have a closer link in the rural areas where life is shaped and decreased by availability and access to basic resources such as water, fuel, wood and fodder (Siddiqi, 1989). Women's survival and that of their household and communities depends on access to and control of natural resources, such as land, water, forest and vegetation. They perform majority of the world's agricultural works, producing food for their families, as well as other goods that are sold in national and international markets. Women are traditionally the prime participation in both the agricultural and the forestry components agro-forestry production system. They have learned to manage the forest resources in order to preserve them for future generation yet women's access to and control of these resources are far from guaranteed (Pearl, 2003)

Women are the primary collectors and users of resources such as water and forest. However, their share in decision making in resources management is nominal. One of the reasons for the lack of women's voice in decision making is due to the past effort of involving them only in routine job. Even when women were made parts of the groups as demanded by the constitution of the CFUGs. Most of the decisions continued to be made by men (Graner, 1997: Pp-56). Ensuring equal share of man and women are of great concern for developers and planners, natural resources management and other integrated conservation and development project (Bhadra and Karki, 2002: Pp-57).

Though fire wood is primarily used in the kitchen by the women, it is collected by both male and females in rural setting. Women are interested in firewood that burns better and with less smoke, even if it means going longer distance to collect them. This factor of wood may not be of so much importance to man who is more interested in getting firewood of any kind. This division of responsibility between man and women makes it difficult for the community to make the decisions suitable for both man and women. As a result, almost all decision made are primarily in favour of man. If men and women of both the groups were consulted before the forests were handed over to these

communities these problems of discriminated resource allocation probably would have been solved (Raut, 2006: Pp-67)

2.1.4 Social Exclusion and Inclusion

Social Exclusion is a process by which certain sections of communities lack access to resources and opportunities around them resulting in the lack of assets, capabilities and voices for self-development and social dignity. In terms of forest management and benefit sharing, social exclusion is a process by which poor, women, Dalits and Janajati lack access to membership in user groups, participation in decision making and thus they lack access to benefits derived from it. Such inability to claim for membership, to participate effectively and benefit proportionately from forest management is often context specific, related with class, caste and gender relations in the community and institutional barriers including inequitable rules and regulations of the institutions they are involved with (LFP, 2005: Pp-105).

The ideal type of inclusive society seeks to illuminate the condition and possibilities for social inclusion; here inclusion is specified primarily in terms of meaningful participation of the process of deliberative democracy. Here, political projects seeking to maximize social inclusion necessarily implicate a social compact, emphasizes the pursuit of common purpose and the type proposed a political parties of social justice as the necessary compliment of such relation of compact; the social realization of these relation depends upon a chronic pursuit of a comprehensive equality of opportunity to participate in collective determinations of social outcome. Social Inclusion is the removal of cultural, social and institutional barriers and the enhancement of incentives to increase the equitable access of *poor, women, dalits* and *janajati* to resources and opportunities (LFP, 2005). When certain sections of communities lack access to resources and opportunities around them resulting in the lack of assets, capabilities and voices for self-development and social dignity, unless women and other marginalized members become capable of influencing the decision making in CF, coming out of the existing social differences and power

relationships, it is difficult to get an equitable process institutionalized in CFUGs (Nightangle, 2001: Pp-93).

Social inclusion can be defined as a process of promoting equitable access to both economic and social benefits of development without any discrimination of caste, creed, descent, religion ethnicity, nationality, sexual orientation, opinion or other characteristic (Tamrakar, 2006: Pp-48)

2.2 Review of Related Literature

The Beijing conference 1999 thrust women's empowerment into a plan of decisive action in the twenty- first century considering the inequality between man and women in power-sharing and decision-making to be a critical areas of concern, it emphasized that it was important to;

- a) Take measures to ensure women's equal access to and full participation in power structure and decision-making and
- b) Increase women's capacity to participate in decision-making and leadership.

There has been a change in emphasis from centralized management of the forest by the department of the forest to decentralized management by the community, community forestry originally involves heavy emphasis on plantation activities while today the focus is more on the natural regeneration of the forests and protection and management by the user groups. The DOF field staff, whose role at one time was patrolling and protecting the forests, is now technical advisors to the community helping them to undertake forestry development. One of the main problems is that some CFs might be over utilized, and that local elites and unscrupulous people may try to capture the benefits. Overutilization could result in the degradation of the forest resources. Equity problems will also occur if benefits are captured by the elites among the FUGs members. The elites from urban areas and district headquarters and high ranking government officials tend to disregards or overlook the tenureship right of FUGs in their respective CFs. There have some isolated cases of this nature, this need to be controlled (Chhetry and Jackson, 1994: Pp-47). He further states

that, "The community forestry mandate states that the preparation of a management plan is an essential step that integrates forest management with a greater understanding of local communities and needs".

In 2050 BS, the women participation was very low due to socio-cultural barriers such as bounded in household chores, illiteracy, and restriction in free mobility, lack of awareness and lack of confidence. While in 2064 BS, it is in increasing trend. All these are possible due to involvement in income generation activities beyond house chores, awareness raising program, training and exposure visit. However, the existing dichotomy between home and outside is one of the serious factors hindering women's participation in CFUG activities. Their awareness level has increased but their participation in FUG/FUC assemblies and meetings have still not improved substantially. Some elite men are still influencing and dominating women's in various ways for example FUG key positions are lead by them till now. Therefore, until and unless women hold the key positions it is difficult to make improvements regarding their empowerment and gender equity. Furthermore, awareness level on women rights remains a hindrance towards women's participation in decision-making in the sampled CFUG (K.C., 2006).

Bhusal(2006), wrote in the Himalayan Journal of Sociology and Anthropology about the educational and socio-cultural status of Nepalese women. In her article she states that, 'To raise the status of most of the poor and undeveloped country, power and aspiration plays an important role. Our country has been renowned as a country full of superstition. In educational sector, its condition is miserable. In comparison to men, women's educational status is painful. For the overall development of a society and nation, women participation is a must. But unfortunately women of our country mostly spend their time doing household activities and also involving in agricultural fields. Due to which education and knowledge acquirement is difficult. Daughters are referred as product going to other's house and are refused to acquire education. Traditional superstition and patriarchal feudalism rituals have been deeply rooted in which

women in compared to men are considered to have low status. Due to lack of quality education, women are denied from rules, regulation and their responsibility. Low educational system has not only limited women's skill and capability but also individual health, family health, legal right, constitutional right, its utilization and active participation, etc. Similarly, women are backward in discriminative policy and educational advantage. Due to lack of education, women cannot afford themselves and need to depend on men for survival. Hence, to overcome such condition and to develop the country, women education is must. Along with education, related educational training should be provided. In the past time, women are made participate only in children growing activity. This makes them more dependent on other'.

In regard to the conservation of forest in India, *Chipko* Movement is the best example. The forests of India are a critical resource for the subsistence of rural peoples throughout the country, but especially in hill and mountain areas, both because of their direct provision of food, fuel and fodder and because of their role in stabilizing soil and water resources, as these forests have been increasingly felled for commerce and industry, Indian villagers have sought to protect their livelihoods through Gandhian method of stayagraha non-violent resistance. In the 1970s and 1980s this resistance to the destruction of forests spread throughout India and became organized and known as the Chipko Movement. The Chipko movement is the result of hundreds of decentralized and locally autonomous initiatives. Its leaders and activists are primarily village women, acting to save their means of subsistence and their communities.

In Nepal, over 3300 community Forestry user groups were legally registered and about 135,151 hectares of forest land had been handed over to them. More community forest user groups were in the process of being handed over, the total number of Forest user groups in the hilly region is 2987 (ICIMOD, 1995: Pp-24).

In forest management and benefit sharing, social exclusion is a process by which Poor, *Women*, Dalits and Janajati lack access to membership in user groups, participation in decision making and thus lack access to benefits derived from it. Such inability to claim for membership, to participate effectively and benefit proportionately from forest management is often context specific, related with class, caste and gender relations in the community and institutional barriers including inequitable rules and regulations of the institutions they are involved with (Gurung, 2006: Pp-12). It is certain that promoting more inclusive democratic and equitable decision making structures will give proportionately greater advantage to poor and marginalized forest users (Shahbaz. et.al, 2005: Pp-18).

Chhetry and Rana (1995), reported that women's participation in CF has so far been mostly in terms of labour contribution. They are often not involved in decision making or in the formulation of plans. *Brahmin* and *Chhetry* women in particular are not expected to attend formal meeting, Initiation to meeting and gathering. The forest are to be successful managed by local users, then women must participate; they are responsible for collection most of the fuel wood, fodder, leaf compost and bedding as well as controlling grazing. They also provide much of the labour for nurseries and tree planting. The men on the other hand, generally take care of cutting selling timber and with administrative decision about forest (Inserra, 1989: Pp-59).

In Nuwakot, men and women do not consider women's position higher or better to that of man in decision making self-image and organizational capacity. Women's status is always lower than that of men. And further the women only have access to resources, but actual controll lies with the men. Even the labour, which by definition belongs to the person concerned, is controlled by man who means that women can only sell their labour with the permission of men and even the income from the women labour is controlled by men. Women do not have access to and control over resources, as they do not own any property therefore, they are not credit worthy. Food is the only area in which women

have controls mainly because they prepare and distribute it. Health, education and training are areas to which women has access but again are controlled by man in these areas (Shrestha, 1999.Pp. 269).

There has been some progress in addressing livelihood needs of poor and marginalized most importantly Dalits and women through their participation in forest user groups under community forestry. However, there still exists a wide gap between the expectation and the achievements in reality. There is continued conceptual debate around the notions of exclusion and inclusion. How an excluded community or group could be included in the mainstream for nation building. Firstly, we need to understand the dynamic processes taking place that encourages different forms of exclusion in Nepal. There is lack of data and information on various sub components of social, economic and political exclusion. And then to investigate the institutional aspects which could prevent exclusion and promote recovery, regeneration and inclusion. These fact-finding attributes would form the research agenda and discussed in a group before finalizing them. The attributes, their nature and usefulness would be more detailed in the seminar exclusion persists (LFP, 2005).

According to Kharel, (1993), if women are involved in every stage of CF managements planning process, the chances of their voicing their opinion and making people listen to them are increased. When communities are formed with women representation (Or ever when are involved, men generally play the dominate role consciously or unconsciously) the decision usually fail to recognized women's need and constrains. In the same way ICIMOD (1999) marked that, the social norms, which discourage women from speaking publicly and interacting with men members of society and professional staffs, also limit women participation. This is compounded by the prevailing high illiteracy rate among rural women. As such, most of the women members of the FUG have on options but to agree to what the men decide in FUG meeting.

Banjade et.al. (2004), stated that most of the CFUGs are formally led by the local elites. These powerful elites vary from place such as local political leaders, particular caste, rich and educated people. Even if some CFUGs involves the marginalized section particularly the poor, the Dalits and *women* of the community in the decision- making body, in most of the cases either they hardly ever spoke up or their voice were not heard properly. The importance of women must be clearly recognized; at least 60 percent representation for women on executive committee was required in order to give women a decisive role.

To sum up all the reviews, we can simply conclude that for sustainable development there should be equal distribution of the resources to make the accessibility among all groups of people. In the beginning the development is defined from materialistic point of view which did not address the equilibrium arrangement. They focus on national development which is associated with nature. Sustainable development is durable plan for the long period of time which simple need to encompass all groups of people. It is because social doctors always address all groups of people equally in the development activities with any discrimination. Equal distribution and participation does not only mean the inclusion of social actors in the development process but, also their knowledge, creativity, institutional and cultural arrangements in which their societies are based. It should focus on local potentiality.

CHAPTER III

RESEARCH METHODS

This study mainly focuses on the condition of female in community forest management in the ward No. 7, 8 and 9 of Hemja VDC, Kaski. This study has intended to gain the information on their position, access and the expectation from the society. Therefore, this study has employed a broad framework and tried to apply a more holistic approach to fulfill its objectives. This section discusses research methods employed to accomplish the study objectives.

3.1 Rationale for the Selection of the Study Site

This study has covered an area of the ward No. 7, 8 and 9 of Hemja, city oriented VDC, which is situated on the northwest of Pokhara sup-metropolis, of Gandaki zone at Kaski district. The research site was selected purposively, as this community forest has received awards for two times for its better performance and proper address of all groups of people. It is widely recognized fact that to make any work sustainable their must be proper participation of the both the gender. Involvement of the women in the management of any varied works to make socio-cultural change that can play decisive role to change the structure of a society or a group. Women the one who had predominately occupied the half space have low representation in every sphere of social and cultural life. The study research covers an area of '*Tibrekot*' community forest Hemja, demarcated by the District Forest Office Kaski.

As it is the universal phenomenon that gender involvement and development are interdependent, this study also attempts to find out the realities of gender disparity in the community forestry management. Since the researcher of this study is very much interested towards the issues of female related cases, so she had selected the community forestry and female participation. It is assumed that the study would not possess any kind of problem in exploring underlying

problems, constraints and consequences, which can have effect on gender access in community forestry management in this study site.

3.2 Research Design

It aims to explore and describe the condition of female in community forestry management patterns among the women ward no 7, 8, and 9 of Hemja VDC and the user groups of *Tibrekot Community forest community* of the selected area in the social setting. Thus, the nature of this study is such that it demands both descriptive research design much as well as to explore some varies. Inductive as well as deductive approaches have been adopted in the analysis and to generalize the findings.

3.3 Nature and Sources of Data

Both primary and secondary data were collected. But higher emphasis was given to the collection of primary data. These primary data were collected in both qualitative and quantitative way. For this purpose, separate questionnaires were developed. Focus Group Discussions were done to get the qualitative data and household survey was conducted in the selected households to obtain quantitative data.

3.4 Census study

This study tried to apply a more holistic approach about the condition of female in the community forestry management. The universe of this study site was the user group of *Tibrekot* community forest in ward no. 7, 8 and 9 of Hemja V.D.C., is taken as a whole. The household enumerated data states clearly that there were 61 household registered by the female as the users group of the community forest. Due to the small population size only of females, researcher has conducted census study for her research. A male household head was taken as respondent from each household; in the case of his absence, the female head has been selected as the respondent. The following table 3.1 shows the universal size of the study area.

Table 3.1: Universe Size

Ward no.	Male	Female	Total
7	62	21	83
8	63	15	78
9	68	25	93
Total	193	61	254

Source: Tibrekot, CFUGs Annual Report 2065/66 (B.S)

3.5 Primary Data Collection Techniques

As per the research objectives, different tools were used to collect the required data for the study. Following methods were used to collect the primary data.

3.5.1 Interview Schedule

A structured interview schedule was prepared to collect the data which would sensibly answer the questions raised in this study. The outcome of the study depends highly over the information collected through this method. The schedule consists of mainly structured and a few unstructured questions. It is expected that this schedule is likely provide sufficient quantitative data needed for the research. On the basis of research goal and feedback received from consultation meeting with female Community forestry user groups'. After getting the proper inspection by the field supervisor and his valuable feedback, necessary modification was made in interview schedule. The field work had been carried out from the date of 11st Jestha 2066 to 4th of Shrawan 2066

3.5.2 Observation

Observation technique was also adopted to collect the primary data and information on the related matters. During this observation period the social setting and general attitude of the people on the concerned topic was observed and recorded. Mainly the observation was unstructured.

3.5.3 Focus Group Discussion

A focus group discussion was also conducted in order to gain convenient information as well as to check the consistency in the data collected from field survey. A semi-structured questionnaire was also prepared for this purpose. A

checklist was made under the bases of cited review and as well with the instruction of the supervisors. There were eleven participants in the FGD session. The student researchers Mr. Deb Bahadur Chhetry and Pritam Raj Pun Magar had helped as a mediator in order to facilitate the program, Tape recorder and making note of important issues and fact was used as aid to the data collection. FGD is supposed to be helpful in verifying and examining the data obtained from interview schedule; and it has been discovered various qualitative data needed to attain the goal of research. This also helped to check the collected data for its reliability and validity. The FGD session was held on the date of 2066/04/24 in the home of a local respondent and member of executive committee Laxmi Kunwar of ward no-9 Hemja VDC, it had invited the different people of different field for gaining in-depth knowledge. The name list of the FGD participants and their respective status were listed in the annex III.

3.6 Secondary Data Sources

The secondary data were collected from the published and unpublished sources; such as the journals, articles, magazines, news papers and the data collected from the different office such as population statistic data of VDC Profile and all valued material which gather from the library of Western Regional Library Pokhara. These all were the main sources of secondary data sources for this study.

3.7 Problems of Field Work

During the field, the researcher had faced a lot of problems. It was very difficult for the researcher to meet the respondents in time. Because most of them remained busy in agricultural work as the area is an agriculture site. The researcher had to visit them time and again. They did not like to respond in the matter of decision making, economy and possession of land. After a hard attempt and the help of Dharmendra Kunwar a local resident and field assistant of the study, they agreed to reply the answer to the questions designed in the questionnaire schedule specially meant for the research purpose.

3.8 Validity and Reliability

The world wide practiced methods were used to make the collected data valid and reliable, the priority was given to the collected primary data. The validity of the instrument was maintained by consulting with supervisor, experts and the concerned persons. Extra emphasis had given to maintain the objectivity of the data and avoid data error by comparing them, with different data collected from the different sources. Likewise reliability of the data has been ensured by careful planning of the questions in the questionnaire schedule and also by taking largest sample of the respondents.

3.9 Method of Data Analysis and Presentation

Mainly descriptive method of data analysis was adopted for this study. However, statistical method was also adopted to show the correlation and variation in data. Data were processed in computer using Statistical Package for Social Sciences (SPSS. 11 for windows) and the same package was used to analyze the data obtained from field study. Cross tabulation, percentage distribution and frequency tables are the main tools to analyze the data. In order to make it easy to understand the result of the study, charts line graphs and figures are also used to some variables. To show the collected information of different variable.

CHAPTER-IV
**SOCIO-ECONOMIC AND DEMOGRAPHIC BACKGROUND OF
THE STUDY AREA**

This chapter includes the socio-economic and demographic background of study area and the respondents. It includes the study site its description, location, cultural setting, climate, historical perspective of the study site, social organizations, social ranking, education, economic structure, occupational structure, land holding, demographic structure, family size, age and sex composition. This chapter begins with a brief study of the study site description.

4.1 Study Site Description

This study site covers an area the community forest named *Tibrekot* CF of ward No. 7, 8, and 9 of Hemja VDC (Figure 4.2), a city oriented VDC of Kaski district. The annual report of the Tibrekot 2064/ 65 states that it holds an area of 119.75 hectars of land of the VDC., which was registered in the community forest regulation act in 5th of Chaitra 2059 B.S. at District forest Office Kaski. It is situated to the north west of the zonal headquarter Pokhara sub-metropolis in Kaski district of Gandaki zone. The study site's geographical location is located to 28°24' - 28°30' north latitude and 83°58' - 84°00' east longitude, the land topography is varying from an altitude of 860 meter to 1415 meters above the sea level. The study site is plain which is known as Hemja Bensi. It has a fertile land formed by the river surrounding it to three sides. To its southeast it has Yamdi River and to its northeast it is bordered by Seti River, they meet at Yamdi to the border of Pokhara. Lamachaur and Simpani to its east, Dital, Dhampus, and Dhikurpokhari VDC. In the west, Puranchuar and Lahhachowk VDCs in the north and Sarangkot and Kaskikot VDCs in the south. Through the center of this VDC, it runs the 70km. long Pokhara- Baglung highway touching near all the wards of this VDC, connecting it with the rest part of the country. It has created an easy access to come in contact with the urban people

and work in the factories. At the same time, it also helped the people to increase economic and social development of the study area (VDC Profile Hemja, 2003).

4.1.2 Cultural Setting of the Study Area

The total population of the entire district is 3,80,527 (CBS 2001), out of which 10,203 people having 4,918 men and 5,285 women in 1902 household reside in this VDC (Hemja Village Profile, 2003). The annual report of the community forest marked that it consists of 254 household and benefiting the 583 males of and 356 female of the area. While the total number of household registered in the name of female are only 61 in number that forms 24 percent of the total user groups. Most of the houses are cemented and few houses have thatched roofs. Some part of the study area has well access to the motor-able road and transportation facility.

4.1.3 Population Composition of Hemja VDC

The population composition of this VDC varies in terms of different wards and caste/ ethnic groups. The ward wise distribution of the population by sex in Hemja VDC, is given below in the Table 4.1

Table 4.1: Ward Wise Population Distribution by Sex 2003

Ward No.	Household	Total population	Male	Female
1	308	1637	768	869
2	198	1044	488	556
3	128	634	308	326
4	195	1041	504	537
5	114	583	288	295
6	323	1912	922	990
7	136	771	380	391
8	241	1267	614	653
9	259	1314	646	668
Total	1902	10203	4918	5285

Source: VDC, Profile Hemja, 2003

This table shows that ward no.1, 6, 9 and 8 are highly populated and ward no.5 is less populated than other. The total number of female is higher than that of males, due to higher birth rate of females.

4.1.4 Caste/Ethnic Composition of Hemja VDC

Hemja VDC is a multicultural VDC. The beauty of the area is the settlement of the different groups of people in the study site. The facts can be seen from the table below.

Table 4.2: Ward Wise Population Distribution by Caste 2003

Ward	Brah.	Chhe.	Newar	Grg.	Magar	Thakali	Kami	Sarki	Damai	Gaine	Other	Total
1	72	97	50	8	7	6	24	22	7	0	15	308
2	38	92	32	0	2	0	5	24	4	0	1	198
3	23	69	24	0	1	0	0	0	5	0	6	128
4	95	54	0	5	0	0	0	31	4	0	6	195
5	28	70	2	0	0	0	0	8	1	0	5	114
6	187	14	2	9	27	6	32	10	17	11	8	323
7	125	3	0	1	1	0	0	0	1	0	5	136
8	172	29	27	3	1	1	0	0	0	0	8	241
9	104	125	3	4	0	0	3	5	0	0	15	259
Total	844	553	140	30	39	13	64	100	39	11	69	1902

Source: VDC, Profile Hemja, 2003

Hemja VDC is inhabited by heterogeneous caste/ethnic groups. This VDC is dominated by Brahmin (44.37%), followed by Chhetry (29.07%), Newar (7.36%), Bishwakarma (3.36%) and other Dalits (7.94%). This exhibits ethnic and cultural plurality. This society from thousands of years has been successful in synthesizing the various religions, culture, ethnic and linguistic constituent.

4.1.5 Climate

The study site has a monsoon type climate. It gets rain basically from June to October. It also gets the rain in winter season through western disturbances. During the summer the temperature ranges from 23°C to 27°C. Due to the valley and mountain breeze it remains comparative cooler at night than the days. And the winter here are excessively cold due to the open site and

nearness of mountain Annapurana range. It remains dry during November to May. It also bears the occurrence of the hail stone in the month of September to February (VDC Profile Hemja, 2003).

4.1.6 Natural Resources

This VDC contains several types of natural resources. Forest, Pastureland, Soil, Water, Stone etc. are the main natural resources available here. The soil is mainly 'Lacustrine' type; colour of the soil is black and is considered as more fertile. Stones are another important natural resource of this VDC which are sold to Pokhara city for the constructional work and mainly located in the bank of river. Some slate stones mine are also available in this VDC. These mines are under the control of private sector. Likewise, forest and pasture land resource are of great significance for sustaining the economy of the village and the villagers. Forest/pasture resource of the upland is assisting livestock sector with feed/ fodder. In the same way forest resource is important and facilitating the people with timber and non-timber forest products. Similarly, water is another important resource coming from water wells and small streams. Most of the low land areas are irrigated by water. Ghatte-Khola is the main sources of water. This has important role in agricultural production and productivity (Chetry, 2008).

4.2 Social Structure of the Study Site

Demographically Hemja represents mixed caste/ethnic society. The study site has dominated by Brahmin (44.37%), followed by Chhetry (29.07%), and then by the Dalits (7.94%). Dalits are found to be the most deprived community group in the research site (Hemja Village Profile, 2003).

4.2.1 Social Organization

This VDC consists of 15 education institute out of this one is a private campus, one government higher secondary school, two government secondary schools two private secondary schools and nine primary schools (VDC Profile, 2003). The developing social organizations working in the village including a VDC office, health post, co-operative banks, MSDO (multi-Sector development

organization) and different youth clubs and a drug rehabilitation and consultancy center, which is established by INF Pokhara. Besides this lots of social organization are also establishing in the ongoing days.

4.2.2 Educational Attainment

Education plays an important role in the overall economic as well as social upliftment in the life of backward people. Education has been regarded as a vehicle of change and development however in Nepal, due to traditional value and beliefs system prevalent in the society a less number of women in the Hindu community were able to get the access of education. A considerable amount of the women of the study site are able to marked themselves as a literate or just able to read and write and much of them are far away from the affordable modern education system. The education level of the female users group has been enlisted in the table 6.1 below, which will also clarify the educational status of respondents.

Table 4.3 Educational Attainment of Respondents

Level of Education	Frequency	Percent
Illiterate	32	52.5
Normal Literate	18	29.5
Under SLC	4	6.6
SLC Passed and Above	7	11.5
Total	61	100.0

Source: Field Survey, 2009.

The table 4.3 gives the glimpse of educational level of the respondents of the study site, wherein majority (52.5%) of the respondents were found of being illiterate. Likewise, 29.5 percent of the respondents were found to know about how to read and write the letters well, in the same way 11.5 percent of the respondents of the found to have the passed SLC and above while the rate of respondents under the SLC is found to be comparatively lower as it is only 6.6 percents only. The collected data states that the level of education among the

respondents is low the level of literate people is low it is because of the *Brahminist* culture.

4.3 Economic Structure

Generally, the main source of economy in the present study area is agricultural activities. Most of the people of this VDC are small or large farmer. Here is lack of industrial development. Thus, people have no other better alternatives. Rice, Maize, Millet, Wheat, Barley, Potato etc are the main crops of this area. Similarly, fruits (i.e. orange, guava, banana, lemon etc.) and vegetables are produce in the massive rate to meet the requirement of the people of Pokhara city. This VDC is popular for the Potato production if the season it help the people to earn a lot mainly the people of this VDC are involve in the production of the Potatoes.

Most of the respondent of the research had reported that they are farmer and the housewife. They were engage in the agricultural activities and they as well as the day to day household activities. In the same way they were also engaged in the collection of fodder for the animals from the forest and they also carry the vegetable on their back to the local market and the nearby city Pokhara.

4.3.1 Land Holding Pattern of the Respondent

As Nepal is a country of an overwhelmingly agricultural based economy, the primary source of economy of the people is land. Therefore, it is necessary to look at ownership of land to understand the extent of basic economy of the study population. Respondents in the study area have possessed agricultural land. Most of them have huge plot of land for the agricultural purpose, the further details about the land holding pattern among the respondents has been shown in the table 4.4 below.

Table 4.4: Land Holding Pattern of Study Population

Land Size (in Ropani)	Land Category and Percentage			
	Khet	Percent	Bari	Percent
Less than 2 Ropani	5	8.2	16	26.2
2 - 4 Ropani	12	19.7	22	36.1
4-6 Ropani	16	26.2	13	21.3
6-8 Ropani	4	6.6	7	11.5
8-10 Ropani	19	31.1	3	4.9
10 and above	5	8.2	-	-
Total	61	100.00	61	100.00

Source: Field Survey, 2009

The table 4.4 illustrates that almost all of the respondents have very huge land holding that proves that the respondents of the study site mainly based on the agricultural activities, The respondents possess both the irrigable and non irrigable land for the different agricultural activities.

4.3.2 Food Condition of Sufficiency

The main crops grown in the study area are Paddy, Maize, Millet, Wheat, Barley; Potato etc. in accordance with the land holding pattern case of the respondents it seems that the respondents do not suffer from the food deficit. Most of the families can meet food requirement around the year from their land and its yield and even they can produce more than the requirement and surplus can be sold in the market to earn profit or as a means of income generation. Few families have food deficit because they have little non-irrigable land holding in size. Production in this VDC is relatively more than other VDC. The food situation (sufficiency and deficits) was also surveyed on the basis of the knowledge of the respondents during field work period which we can observe in the table 4.6.

Table 4.5: Food Sufficiency at Household by Month

Sufficiency Months	Households	Percentage
Up to 3 Months	7	11.5
3-6 Months	3	4.9
6-12 Months	30	49.2
12 Months and above	21	34.4
Total	61	100.00

Source: Field Survey, 2009

As per the collected fact by the researcher from the field among the total 61 respondents who responded on food sufficiency issue, the food deficiency as a whole was reported by 10 (16.4%) households. After studying the figures of the table, it is obvious that large number of the respondents 51 (83.6%) household were able to meet their food requirement for more than 6 months from their own production. Wherein 49.2 percent of the respondents can meet the requirement for up to 12 and 34.4 percent of the respondents had reported that they produce more than the requirement for their family in the year. Thus, we can conclude that the population of the study site does not suffer from the food deficiency.

4.4. Demographic Structure

4.4.1 Family Size

Family size is another important variable in context to the Nepalese society, because it determines the role of the role and structure of the society. That marks the role and status of the female in family. It is also proposed to explore whether family size has any association with the benefit sharing and decision making role of the female in the community forest management. The specific questions raised for exploration are; what is the effect of family size on the information sharing process in the and among the user groups? Does it make any difference in the decision making role of the female?

Household size of the respondents ranged from a minimum of 2 to a maximum of 9 members, the average being 4.5 members. It is generally believed that larger the family size, lower would be the female access to the activities of the community forest, as because they have to engage in the household activities

and vice-versa. Here it is expected that lower the family size greater would be female involvement in the different activities of the forest management. And can play pivotal role in the decision making and extra activities too. Though the family size is comparatively large, even then the types are found a bit different that can be seen from the given figure 4.1.

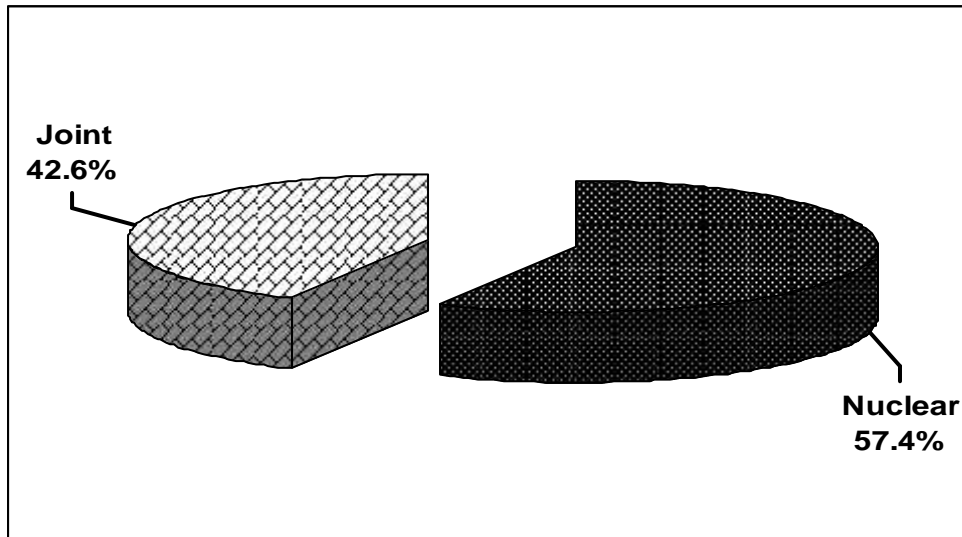


Fig. 4.1: Types of Family of the Respondents.

Source: Field Survey, 2009

As the above figure 4.1 clearly states that 57.4 percent of the respondents have lived in nuclear pattern whereas, 42.6 percent of the respondents live in the joint family. From the above fact it can be stated that due to nuclear family the respondents bears a bit longer time for the activities of community forest. Those who are living in the joint family are reported that they have to pay a large amount of time for the care and rear of the family members.

4.4.2 Caste and Age Composition of the Respondents

The data was based on the report of the female of the study site. Here different caste group of study site were taken to get the set goal of the study. The table 4.6 below illustrates the fact collected from the field about the caste and the age structure of the respondents in the study site. The age of the respondents is an important variable to get the reliable and the valid data. As the aged the respondent is the more reliable fact they report too, due to the long experiences they bear.

Table 4.6: Caste and Age wise Distribution of the Respondent

Age Groups	Caste Group										Total	Percent
	Brahmin		Chhetry		Sudra		Gurung		Magar			
	Frq.	%	Frq.	%	Frq.	%	Frq.	%	Frq.	%		
20-25	2	10.0	3	15.0	3	33.3	1	11.1	1	33.3	10	16.4
25-30	9	45.0	7	35.0	4	44.4	6	66.7	-	-	26	42.6
30-35	8	40.0	4	20.0	2	22.2	2	22.2	2	66.7	18	29.5
35-40	1	5.0	3	15.0	-	-	-	-	-	-	4	6.6
4.-45	-	-	2	10.0	-	-	-	-	-	-	2	3.3
45 and above	-	-	1	5.0	-	-	-	-	-	-	1	1.6
Total	20	100.0	20	100.0	9	100.0	9	100.0	3	100.0	61	100.0

Source: Field Survey, 2009

Table 4.6 presents the general information about the percentage distribution of the respondent by caste and age. The largest percentages of the respondent were from the age group of 25-30, it is dominated mainly by the *Brahmin* community and had been followed by the *Chhetries* in the same way the least were from the age group above the 45 years it is predominantly from the *Chhetry* community. Among the respondents the majorities were from the Brahmin and Chhetries and least was from the Magar community.

To sum up the chapter, it can be stated that the female of the *Tibrekot community forest* were mainly from the middle class family and the education levels of the respondents were also not very high. It had also been noted that most of the respondents were housewife and the agricultural farmer and had to contribute a lot of time to the household activities.

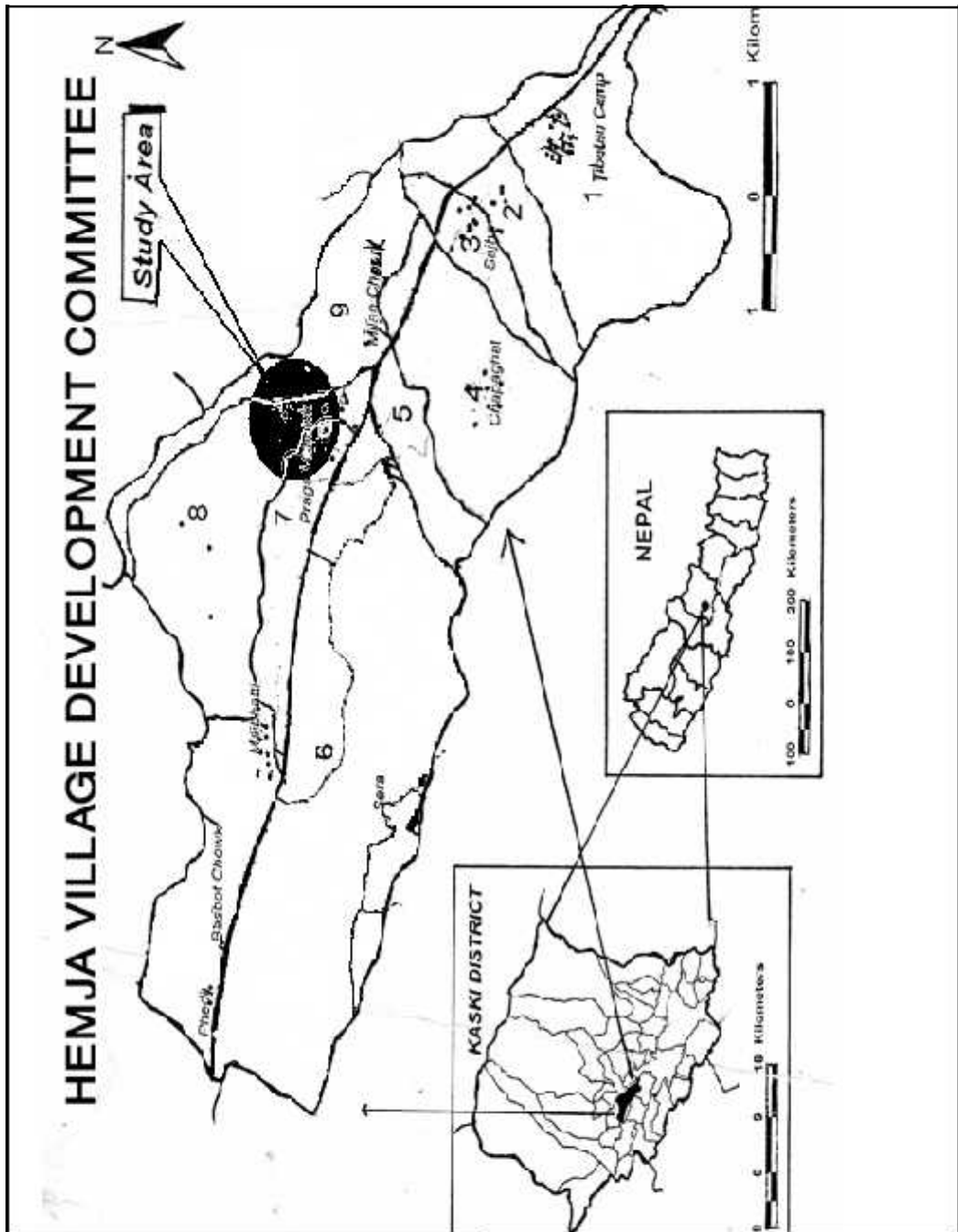


Fig. 4.2 Map of Hemja V.D.C. Showing Studying Site
 Source: Department of Geography P.N.Campus Pokhara (GIS) 2009.

CHAPTER-V
INFROMATION AND BENEFIT SHARINGS

This chapter deals with the system of information and benefit sharing among the female members. Further more it elaborates about the views of the respondents in getting information and the training provided by the community forest user groups committee. It also deal with the method of relying the information among the user groups and the process of forest product distribution and the provision of loan facilities provided by the Forest user groups

5.1 Information About the Executive Committee

The surveyed report shows that the population of the study site does not have the rigid knowledge about the members of executive committee. It is surprised to hear so because they are the member of the user group and they do not have sound knowledge about the members of executive committee. The facts collected from the field survey about the knowledge of executive committee member by the respondent have been shown in the table 5.1 below.

Table 5.1: General Ideas about Executive Committee Members

Members	Frequency	Percent
10 members	2	3.3
11 members	35	57.4
9 members	3	4.9
Not Known	21	34.4
Total	61	100.0

Source: Field Survey, 2009

The table 5.1 above illustrates the facts reported by the respondents about the members of the executive committee. It is found that 57.4 percent of the respondents have only the knowledge about the total member of the user executive committee, while 34.4 percent of the respondents do not have any

idea about the user committee even when they are the member of user groups. In the same way the 4.9 percent of the respondents had marked that there are 9 members in the executive committee and similarly 3.3 percent of the respondents had stated that there are 10 members in the committee. It is obvious the user members do not have proper information about the there own committee members. Here we can conclude that information system in this forest committee is not effective. The annual report of the *Tibrekot* community forest had shown the structure executive committee which is listed in the table 5.2 blow.

Table 5.2: Executive Members and Their Post for 2064/65

S.N	Post	Name	Address
1	Chairman	Daya Ram Banstola	Hemja-7
2	V- Chairman	Sher Bahadur Kunwar	Hemja-9
3	Financial Head	Devidatta Kunwar	Hemja-8
4	Coordinator	Krishna Bahadur Kunwar	Hemja-8
5	V- Cordinator	Krishna Pd. Pahari	Hemja-8
6	Member	Jeetman Singh Besnet	Hemja-9
7	Member	Hiramaya Kunwar	Hemja-9
8	Member	Laxmi Kunwar	Hemja-9
9	Member	Sakuntala Poudel	Hemja-7
10	Member	Devilal Poudel	Hemja-9
11	Member	Himlal Poudel	Hemja-7

Source: Annual Report of *Tibrekot* Community Forest 2064/65

The secondary source of the executive member of the community forest proves that there are 11 member and each have distinct post, While the user members do not have proper knowledge about the numbers of members. So it is not good that the member of the same branch do not have knowledge about the members.

5.2 Condition of Communication about the Programmes

The researcher of the study had made an attempt to know about the condition of getting information of the different programs held or organized by the

community forest. The facts about the access of information to the respondents reported by them had been shown in the figure 5.1 below.

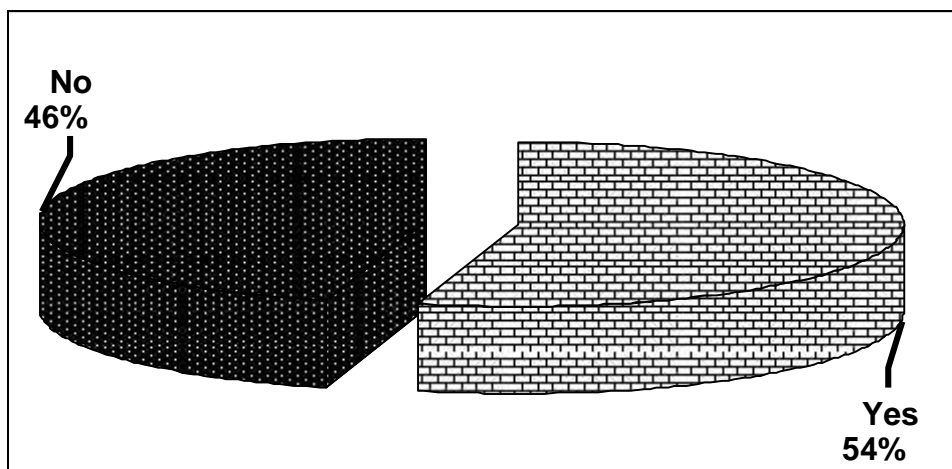


Fig. 5.1: Receives the Information about the Programs

Source: Field Survey, 2009

The figure 5.1 demonstrates that 54 percent of the respondents had reported that they were informed about the programs organized by the executive committee while 46 percent of the respondents had marked that they were not informed about the programs organized by the executive committee. So it seems that near to the half of the respondents were not receiving or relying the information about the programs.

5.3 Reasons for Not Getting Information

From the field survey it had been collected that 28 (45.9%) respondents had marked they do not get the information about the programs organized by the executive committee. The reasons marked by the respondents were shown in the table 5.3 below.

Table 5.3: Factors for Not Receiving Information

Factors	Frequency	Percent
Fear of sharing benefit	5	17.9
Weak information system	5	17.9
Socio-economic Discrimination	13	46.4
Not Interested	5	17.9
Total	28	100.0

Source: Field Survey, 2009

The table shown above illustrates the fact reported by the 28 respondents which regard to the given question, that majority of the respondents 13 in number with i.e. (46.4%) from the field survey had reported that it is due to the socio-economic cause the female were still kept aside from male zone. The study site is predominantly a Hindu dominant area where female are given less access to the chances. In the same way rest of all i.e. 7.9 percent of the respondents each had reported that it is because of the fear of sharing the benefit among all of them do not give the female user the notice about the programs, whereas other had marked that they have weak information system, while remaining were not much interested in the programs of community forest respectively.

5.4 Methods of Relying the Information by CFUGs

It is an important aspect to know the system of information relying on and among the user's members. So the researcher of the study had interviewed with the respondents about the methods of getting the information of the committee programs. The reported fact had been listed in the table 5.4 below.

Table 5.4: Medium of Gaining Information

Medium	Frequency	Percent
Public notice	27	44.3
Home to home information system	28	45.9
<i>Katwal System</i>	2	3.3
From Friends	4	6.6
Total	61	100.0

Source: Field Survey, 2009

The table 5.4 gives the glimpse of the system of information relying among the user groups. It shows that 45.9 percent of the respondents receive the information through the system of home to home information relying system, while 44.3 percent of the respondents marked that they use the public notice board of the committee to get the information, while 3.3 percent of the respondents had reported that they get the information through the *Katwal*

system. In the same way 6.6 percent of the respondent had marked that they get the information through the help of their friends. So, it is clear from the above reported fact that different groups of people receive the information through different medium.

5.5 CFUGs Deliver Training to the Users

Researcher in the field survey had made a query about the training provided by the CFUGs to the users, then different responses were given by the respondents as some of them had marked that it provides training to the users while some said they had still not yet known about the training given to them. While some had reported that the training was basically for the senior members. The reported facts were presented in the figure 5.2 below.

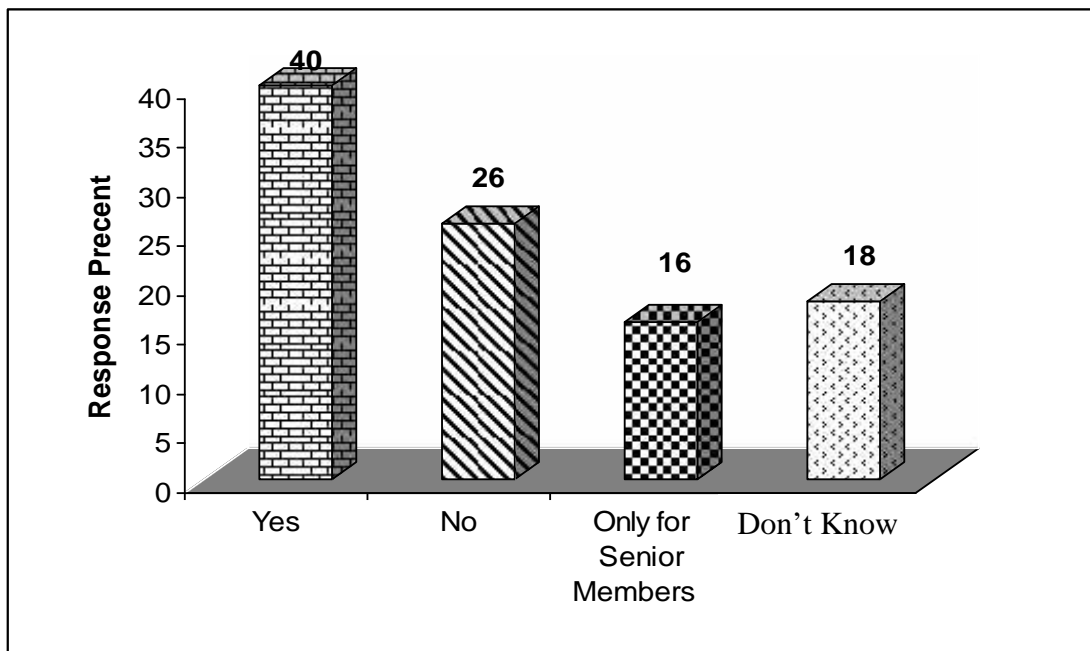


Fig. 5.2: CFUGs Organized Training

Source: Field Survey, 2009

The figure 5.2 above demonstrate the fact that CFUGs organize the programs and training to the users groups but the distribution and sharing of the training to all users are not found similar. 40 percent of the respondent had reported that it provides the training while 26 percent of the respondents had marked that it does not provide training to the users. On the other hand 34 percent of the respondents had marked that it provide the training, but it is not meant to all. It

give training opportunity to the senior member of the committee only while some other had marked that they are not inform about the training organized by the committee.

5.6 Users Participation in the Trainings

The field survey was made to know the participation of the users in the training provided by the committee. And the fact collected from the field was shown in the figure 5.3 below. It illustrates the users participation in the trainings provided by the CFUGs.

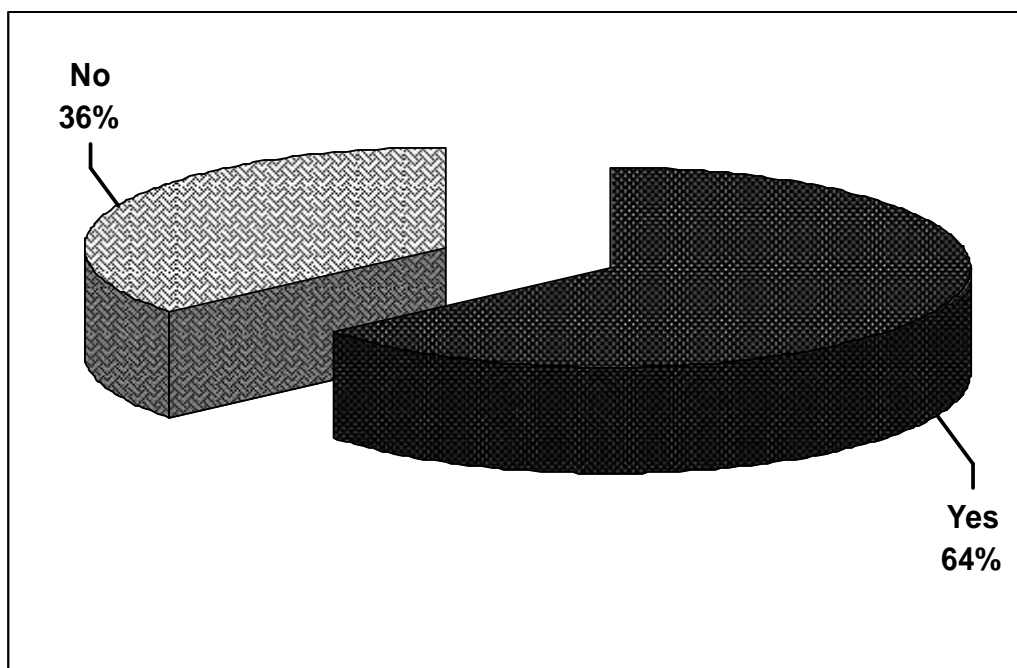


Fig. 5.3: Users Participation to the Organized Training
Source: Field Survey, 2009

The figure 5.3 demonstrates that 64 percent of the respondents had taken the trainings provided by the CFUGs. While 36 percent of the respondents had marked that they had not taken any kind of training from the CFUGs. So from the fact we can draw that still the female were not totally involved in all sort of activities of headed by the male.

The researcher of the study had made an investigation about the lack of participation on the training provided by the CFUGs to the users committee. The following facts have been registered, that were shown in the table below.

Table 5.5: Reasons for Not Participating

(N=61)		
Reasons	Frequency	Percent
Not informed	8	36.4
Discrimination	8	36.4
No time	6	27.3
Total	22	100.0

Source: Field Survey, 2009

The above table shows the fact collected from 22 (36%) respondents those who had reported that they had not participated in any sort of training provided by the respondents. Out of the total of 22 respondents 36.4 each had reported that they were not inform about the training and other groups had stated that there is discrimination among the user groups and executive member so they do not relay message all the users. While 27.3 out of the total of 22 respondents had reported that they do not have time to take training from the organized program.

The researcher had made an interview to the one (39) who had reported that they had taken part in the training about the information they receive from. They had marked different sources of gaining the information, which the researcher had shown through the help of the table.

Table 5.6: Source of Information about the Training

(N=61)		
Sources	Frequency	Percent
Neighbourhood	23	59.0
From Notice Board of EC member	9	23.1
Other members had informed	7	17.9
Total	39	100.0

Source: Field Survey, 2009

The table 5.6 above illustrates the fact that most of the respondents made the system of getting the information through the neighbours. It had been marked by the 59 percent of respondents out of the total of 39 respondents from the

field survey. While 23.1 percent of the respondents from the total of 39 had reported that they help themselves inform through the notice board of EC member public notice board. On the other hand 17.9 percent of the respondents had reported that they get information from the other member of the user groups. So there it seems that there is not a proper method to relay the information to all the member of the user committee.

5.7 System of Benefit Sharing among Users

The investigation was made by the researcher about the benefit sharing among the users, and had discovered the fact that all of the respondents had marked that the distribution pattern of the forest product is fair. And then researcher had interviewed again about the method of sharing the benefits the following facts were collected from the field, which is shown in the table 5.7 below.

Table 5.7: Method of Benefit Sharing Among the Users

Methods	Frequency	Percent
Equality	49	80.3
Quantity basis as per family numbers	5	8.2
According to Operational and System plan.	7	11.5
Total	61	100.0

Source: Field Survey, 2009

The table 5.7 above illustrates the facts that the system of sharing the benefits in the *Tibrekot* community forest reported by the respondents of the field study. As 80.3 percent out of the total had reported that the distribution is made on the equality basis to all the user members. While 11.5 percent of the respondents had reported that the benefit is shared as the operational and system plan executed in the beginning similarly, 8.2 percent of the respondents had reported that it is shared as per the family members and their needs. So the different respondents had reported different way of distributing the benefits among the users, somewhere they seem to be the same as an equality basis.

5.8 Type of Forest Product Consumed by the Respondents

The respondents were interviewed about the consumption of the forest product they get from the community forest of their own. As being the farmer they also had reared the animals and needed the fodder for the animal and they also had marked that they used to collect the timber for the forest at the time of need. In the same way they were fond of collecting the leaves for the cattle shade and later on to use it to the farm land. The collected data stated about the use of forest product by the respondents in the table 5.8 below

Table 5.8: Forest Product Consume by the Respondents

Product Consume	Frequency	Percent
Leaves and Fodders	2	3.3
Woods and Leaves	8	13.1
Woods and Timber	5	8.2
Woods, Grass, Timber and Leaves	46	75.4
Total	61	100.0

Source: Field Survey, 2009

The table 5.8 above demonstrates clearly that the respondents use the forest for the multipurpose. Out of the total 75.4 percent of the respondents had reported that they consume the leaves, woods, timber and fodder for the animal. Similarly 13.1 percent of the respondents had reported that they consumes woods and leaves from the forest. In the same way 8.2 percent of the respondents had reported that they consume woods and timber from the forest sources lastly 3.3 percent of the total respondents had marked that they consume leaves and fodders for the animal and farmland.

5.9 Attitude Towards the Distribution of Forest Products

Even though the respondents had reported that the distribution of the forest product is fair. But when the researcher had investigated about the satisfaction on the distribution of the forest product some of the respondents were found dissatisfied with system of distribution of forest product. The facts collected from the field were listed in the figure 5.4below.

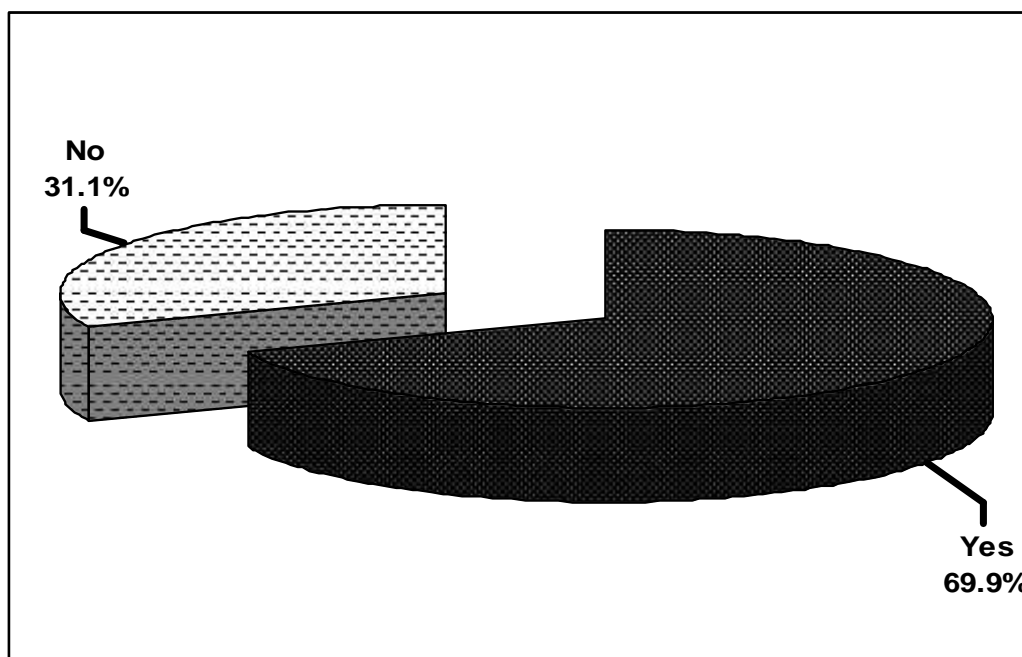


Fig. 5.4: Satisfaction in the Distribution of the Forest Products
 Source: Field Survey, 2009

The figure 5.4 illustrates the fact that 69.9 percent of the respondents had marked that they were satisfied in the distribution system adopted for the distribution of the forest product, while 31.1 percent of the respondents had marked that the female users of the Tiberekot CF were not satisfied with the distributional system of the forest product.

The researcher of the study had made an interview to the respondents who were found dissatisfied with the distributional system, about the way how it can be made better or why they were not satisfied to the system. The fact gathered from the field has been presented in the tabular form below.

Table 5.9: Step Forward for the Proper Distribution

Recommended Steps	Frequency	Percent
Low Charge for Products	8	42.1
Equal Access to All	4	21.1
Equal Distribution to All	7	36.8
Total	19	100.0

Source: Field Survey, 2009

The respondents who had reported that they were not satisfied with the distributional pattern of the executive committee were asked about the way to adopt to make more democratic in the in distribution of the forest, then they had 42.1 percent out of the total respondents of 19 had reported that the charge of the product must be made low so that all the people can make the easy assess to get the products. In the same way 36.8 percent of the respondents had reported that there should be equal distribution of the forest product to all while 21.1 percent of the respondents had marked that it should be made easy access to all the groups of people. They suggested the point in order to make the distributional process more democratic in nature.

5.10 Discrimination in the Benefit Sharing

The respondents were interviewed about the sense of any discrimination they experience during the benefit sharing of the forest related product and issues of loan provided by the committee. The data demonstrates that somewhere they have slight discrimination in the distributional pattern. The figure 5.5 shows the view of respondents about their experience of discrimination in the benefit sharing among them.

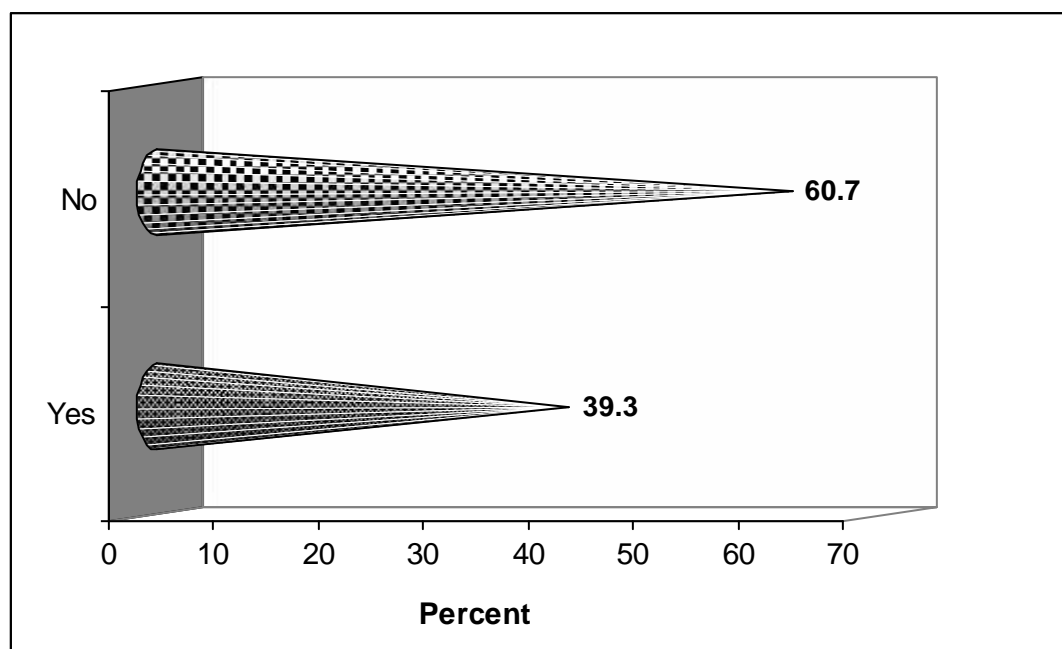


Fig. 5.5: Discrimination in the Benefit Sharing

Source: Field Survey, 2009

Out of the total respondents of 39.9 percent of the respondents who had marked that they have experienced the discrimination in the benefit sharing of the forest products. While 60.7 had reported that do not yet have any knowledge of discriminatory practice in benefit sharing. They had reported that they use to distribute the benefit as the operation plan.

Out of the total respondents of the field survey who had marked that experience of the discriminatory practices, were asked in which aspect of the benefit sharing they experienced the discrimination. The reported fact had been shown in the table 5.10 below.

Table 5.10: Grounds of Discrimination in Benefit Sharing

(N=61)		
Grounds	Frequency	Percent
Social and Cultural	8	33.3
Economical	6	25.0
Political	10	41.7
Total	24	100.0

Source: Field Survey, 2009

The field survey among the 24 respondents who had marked that they experienced discrimination had stated different ground of discrimination. 41.7 percent of the respondents out of the total of 24 had reported that discrimination is found on the basis of political ground: that one belongs to which party of political affiliation. In the same way 33.3 percent of the respondents had marked that they are discriminated on the socio-cultural aspect: it sees one belongs to which caste while other 25 percent out of the total of 24 had reported that they discriminate on the basis of economic condition of an individual.

5.11 Fund Mobilization of the CFUGs

When the researcher had interviewed about the knowledge of total saving of the community forest of *Tibrekot* different attitude were collected from the respondents as some of them have no ideas of saving of their forest and some

had reported that they have knowledge of saving their fund. The fact collected from the field have been analyze in the figure 5.6 below.

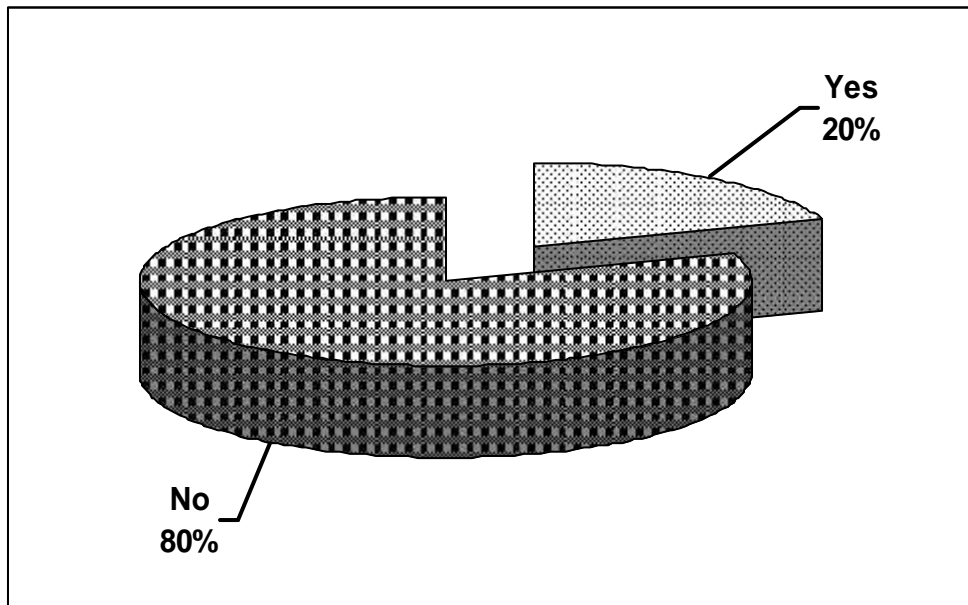


Fig. 5.6: Knowledge of Savings of the CFUGs
Source: Field Survey, 2009

The field survey report shows the fact that majority of the respondents (80 %) have no ideas of saving of their own forest. While 20 percent of the respondents had reported that they have knowledge of total saving of the forest fund. It raises the question of transparency in the fund mobilization among the committee members and the way of collection.

5.11.1 Loan Provision to the Users Group Member

The researcher had discovered the fact that fund collected from the different source by the forest is mobilized among the respondents. So the researcher had asked to the respondents about the knowledge of provision of loan provided by the CFUGs. It has found that 38 (62.3%) of the respondents had reported that it provides loan to the users, while 23 (37.7%) of the respondents had reported that they had no ideas of the provision of loan provided by the CFUGs to the users. And the researcher had interviewed to the respondents who had marked that they have ideas about the loan providing provision of the CFUGs: that they

had taken the loan or not. The fact collected from the field is shown in the figure below

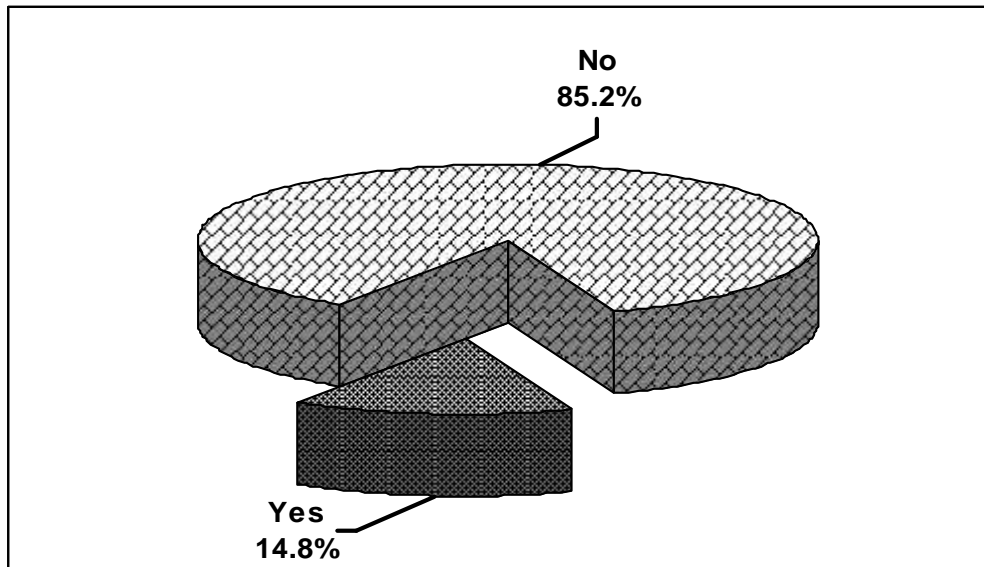


Fig. 5.7: Taken Loan from the Saving of CFUGs
Source: Field Survey, 2009

The figure 5.7 above illustrates the fact that majority of the respondents (85.2%) had not taken the loan from the saving of the CFUGs, whereas 14.8 percent of the respondents had reported that they had taken the loan upto 25,000 Nrs for the personal works in the minimum interest rate rendered by the committee are supposed to pay the interest in every month that is also a source of income of the CFUGs fund collection.

To sum up the chapter we can state that the status of female in the benefit sharing and the information gathering process in not so satisfactory. Many of the females do not have access to the programs conducted by the committee. On the other hand while distributing the forest product, it somewhere seems to be bias among, as because they had reported that they have experienced the discrimination among the members groups.

CHAPTER-VI
WOMEN IN DECISION MAKING PROCESS

This chapter includes the Process of decision making, attitude towards the decision making, do the females get the chance to put their ideas/opinion and knowledge, Reason for not expressing the view openly, does the user committee consider the view points placed by the females, the factors affecting the decision making, obstacle for not letting chances for the females, do the female participate in formulating prospectus of CFUGs, participation at the time of User Groups formation, does the user committee set the price of the forest product and valued suggestion for the democratization of CFUGs users committee. It begins with the Process of decision making.

6.1 Decision Making System in the CFUGs

It is very important to know about the process of decision making in any system. Here the researcher had focused on the community forest users groups management and decision making process. For that the researcher had made an interview to the respondents to know about the process of decision making process, then the facts gathered from the field have been shown in the table 6.1 below

Table 6.1 Process of Decision Making

Process	Frequency	Percent
Passed agenda by the committee member	4	6.6
Involved all CFUGs members	55	90.1
Passed agenda only by influential Person	2	3.3
Total	61	100.0

Source: Field Survey, 2009

The table 6.1 above states clearly that there are different ways marked by the respondents about the process of decision making adopted by the CFUGs committee. Wherein, 90.1 percent of the respondents had reported that while making the decision it calls all the user groups and formulates the decision.

Similarly 6.6 percent of the respondents had reported that the decision is made by passing the agenda by the committee members. In the same way 3.3 percent of the respondents had marked that decision is made by passing the agenda by the influential person.

It has been investigated again about the decision made by the different methods is effective or not. The respondent had marked different view in it. The fact collected from the field is listed in the figure 6.1 below.

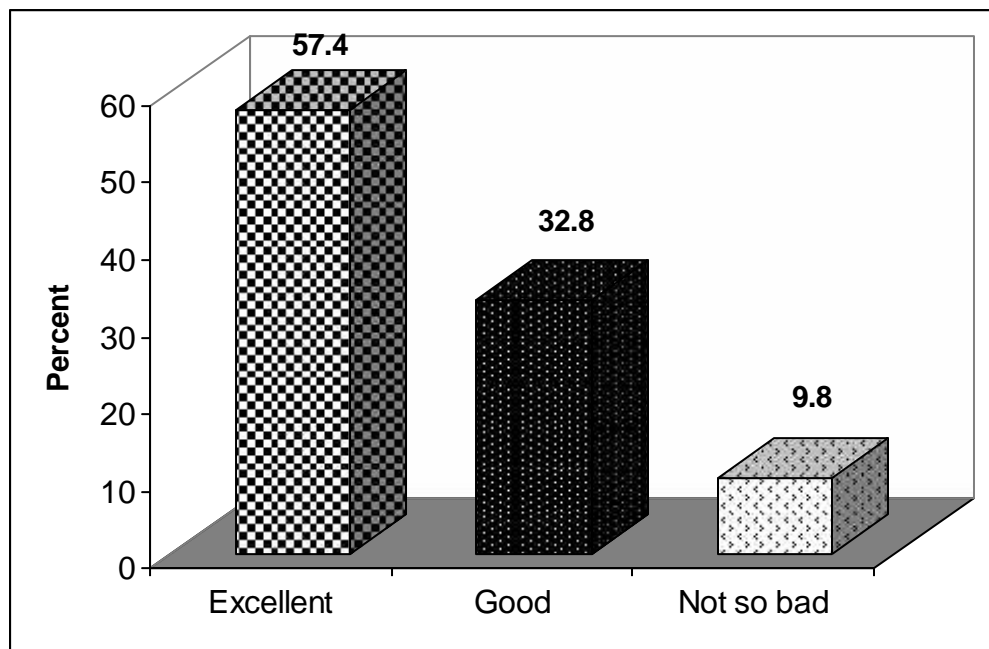


Fig. 6.1: Views about Decision Making Process
Source: Field Survey, 2009

For the field survey report presented in the figure 6.1 demonstrates the facts that the 57.4 (35) percent of the respondents had marked that the process of decision making in the CFUGs is Very fair 32.8 (20) percent of the respondents of the total had reported that it is normal and while 9.8 (6) they marked that the decision making process is not so bad. Here it seems that some of the respondents are not very much happy with the decision making process. So they are again asked reason for giving the answers as not so bad. The facts reported by the respondents were shown in the table 6.2 below.

Table 6.2 Cause of Disagreement at Decision Making Process

Causes of Disagreements	Frequency	Percent
All the users do not participate in all the programs	3	50.0
The decisions are made by the elite groups	2	33.3
They do not accept the decision of the user groups	1	16.7
Total	6	100.0

Source: Field Survey, 2009

Among the respondents who had reported that the decision making process is not so bad; they had marked the reasons for such answer in the table 6.2 above. Out of the total of 6 respondents 50 percent of them had reported that at the time of decision making process all the users' member do not participate in all the programs. In the same way 33.3 percent of the respondents had reported that the decisions were made by the elite group of people. Similarly, 16.7 percent of the respondents out of the total of 6 had reported that while making the decision the executive member do not accept the decision of the users groups.

6.2 Decision Making and Female Chances

The study mainly focused on the female in the community forestry especially the role in decision making and the life chances and the independence of female in expressing their view openly in the male zone while formulation of the constitution and in the process of decision making. The respondents were interviewed that do they get the chance to put their ideas/ opinion and knowledge in the decision making process. The researcher had collected different response in regard to the interviewed question; it reported facts were shown in the table 6.3 below.

Table 6.3 Independence for Female to Put Forward the Views

Chances	Frequency	Percent
Yes	47	77.0
No	12	19.7
Some time	2	3.3
Total	61	100.0

Source: Field Survey, 2009

The table 6.3 above illustrates clearly that 77 percent of the female gets the chances to express their view and opinion freely, while 19.7 percent of the respondents had reported that they do not get the free chances to put their views in the decision making process. Whereas, 3.3 percent of the respondents had reported that only some time they get the chance to put their opinion freely. But all the time it is made by the influential persons.

The facts state that respondents of the study area are not much independent in expressing their opinion in the decision making process. So, to democratize the system must be more equality among all the members.

6.3 Reasons for Not Getting Independent Chances

Out of the total respondents from the field survey 12 of them had reported that they do not get the independent chances to express their views and the opinion were properly been address. The fact recorded from the respondents was presented in the table 6.4 below. It illustrates the causes of not addressing their opinion while formulating decisions..

Table 6.4 Cause for Not Addressing the Female’s Views

Causes	Frequency	Percent
Do not care the words of female	4	33.3
Due to the male domination	5	41.7
Female they themselves are not aware	3	25.0
Total	12	100.0

Source: Field Survey, 2009

The table 6.4 above demonstrates the causes of not addressing the ideas and opinion of the females as stated by the female respondents from the field site. Out of the total of 12 respondents 33.3 percent of them had reported that the committee members do not give emphasis to the ideas of the female and it is not considered important. In the same way, 41.7 percent out of the total of 12 respondents had reported that the culture of our society is responsible behind the low chances of female’s ideas being addressed while formulating the constitution it is because of the male dominated culture. While, 25 percent of

the respondents had stated, that female themselves are not aware of the concerned issues so they behind in the process of giving the decision making procedure.

6.4 Freedom in Expression of Views

To the total respondents it was interviewed about the freedom of females' expression of views and ideas while in the decision making process. It was recorded all of them had marked some answers, the collected facts have been shown in the figure 6.2 below.

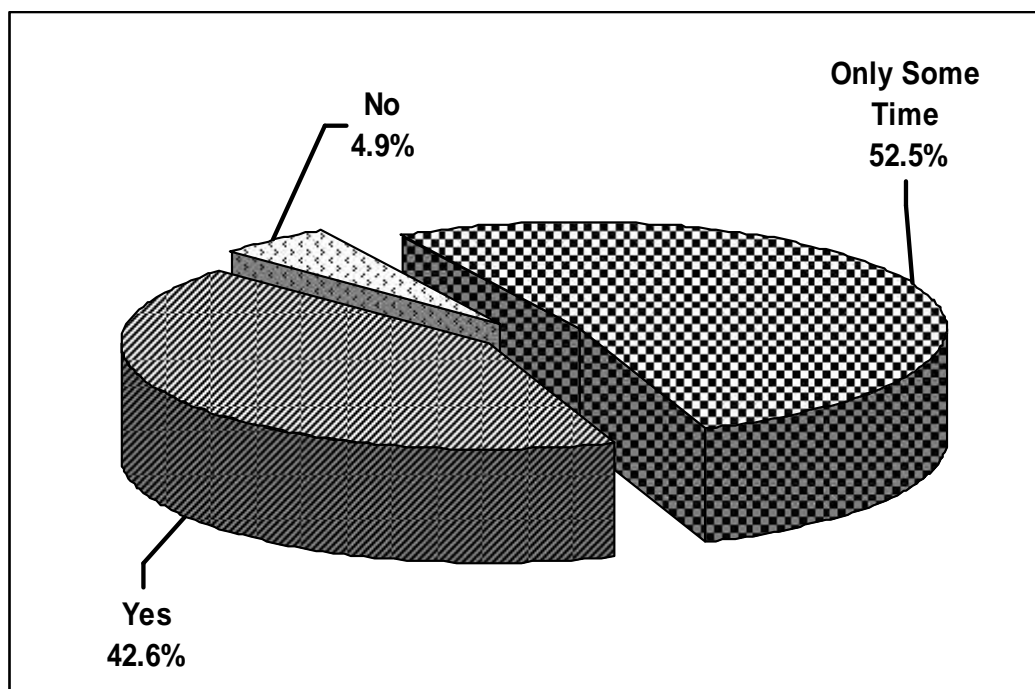


Fig. 6.2: Freedom of Expression

Source: Field Survey, 2009

The figure 6.2 above shows that 52.5 (32) percent of the respondents had reported that they only some time express the views and ideas freely. Similarly 42.6 (26) percent of the respondents had reported that they freely express their view in front of the committee members. But, 4.9 (3) percent of the respondents had reported that they do not express the ideas, as they were interviewed about the reason for not expressing their views freely. They had marked that they feel shy to express their views and some of them had stated they fear to express the view in the male zone.

6.5 Female's Views and Chances to Consider

The researcher of the study had made an investigation with the objective of the study that the users committee considers the female views in making the decision. The different facts were recorded by the researcher, and are presented in the table 6.5 below.

Table 6.5 Consideration of Female Views by the Users Committee

Responses	Frequency	Percent
Yes	38	62.3
Very Often	12	19.7
No	11	18.0
Total	61	100.0

Source: Field Survey, 2009

The table 6.5 above illustrates that 62.3 (38) percent of the respondents had reported that their views while formulating the decision of the users groups. In the same way 19.7(12) percent for the respondents had marked that very often their views were considered by the users committee and 18 (11) percent of the respondents had reported that their views were not considered while making decision. The collected facts stated that the female views were not much addressed or it is given less emphasis by the users' committee. It is found that the users committee do not make any initiation for the uprising of the female condition.

6.6 Factors Affecting for Decision Makings

It was noted that some of the respondents reported that their views were not properly addressed or their views were not much given importance. The researcher of the study had made an attempt to investigate the influential factors that affected the decision making process on the CFUGs. The facts reported by the respondents were marked below in the table 6.6. It is to know the socio-culture environment in the community forest management and also to find out how the issues of female is addressed in the CFUGs.

Table 6.6 Influential Factors that Affects the Decision Making Process

Related Factors	Frequency	Percent
Educational Status Member	31	50.8
Size and Condition of Forest	14	23.0
Socio-Economic condition of the Members	9	14.8
Caste System	7	11.5
Total	61	100.0

Source: Field Survey, 2009

The table 6.6 above illustrates the fact that 50.8 percent of the respondents marked that the users committee considers educational status of the member as a prominent factor in decision making process. In the same 23 percent of the respondents out of total had reported that the size and condition is main factor consider by the committee member for making decision. Similarly, 14.8 percent of the respondents had reported that socio-economic condition of the member plays pivot role in the decision making or formulation in the CFUGs. While 11.5 percent of the respondents had reported that the caste system play important role in making the decision. The respondents of the study site had marked different reasons for the decision making process.

6.7 Participation of Female in Different Activities of CFUGS

The researcher of the study had tried to get the data about the female's participation in the different activities of the CFUGs. Than it had found that much of the female were not incorporated in the activities conducted by the CFUGs. The researcher had made an investigation on the following areas;

6.7.1 Formulating Constitution

The females were interviewed about their participation in making the constitution of the CFUGs. The facts collected about their participation has been marked in figure 6.3 below

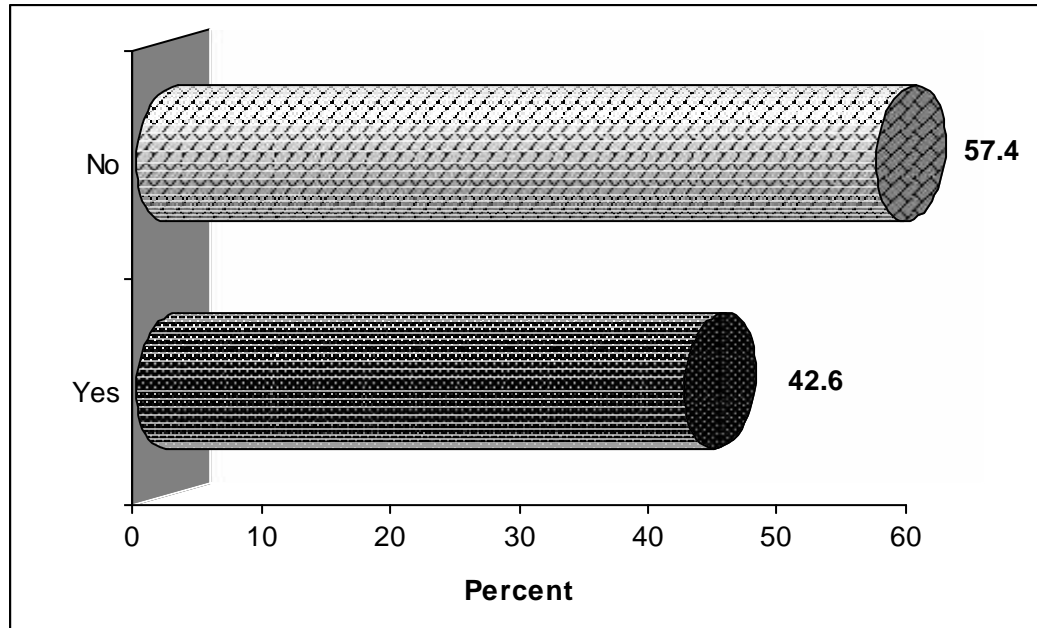


Fig. 6.3: Participation in CFUGs Constitution Formation
 Source: Field Survey, 2009

The figure 6.3 helps to illustrate the fact about the rate of female's participation in formulating the constitution of the CFUGs. Out of the total respondents 57.4 percent of them had reported that they do not take part in the formulation of the constitution of the CFUGs. Rather it is done or formulated by the maximum male member's decision, while 42.6 percent of the respondents had reported that they had participated in the formation of constitution of their own Community forest uses groups. It seems that much of the female of these CFUGs are not much conscious about the laws of the users groups.

6.7.2 Finalization of Operational Plan

The participation of the female sin finalizing the operational plan was also studied. In this segment too the rate of female's participation is found less. The collected data as reported by the respondents from the field survey has been listed in the figure 6.4 below.

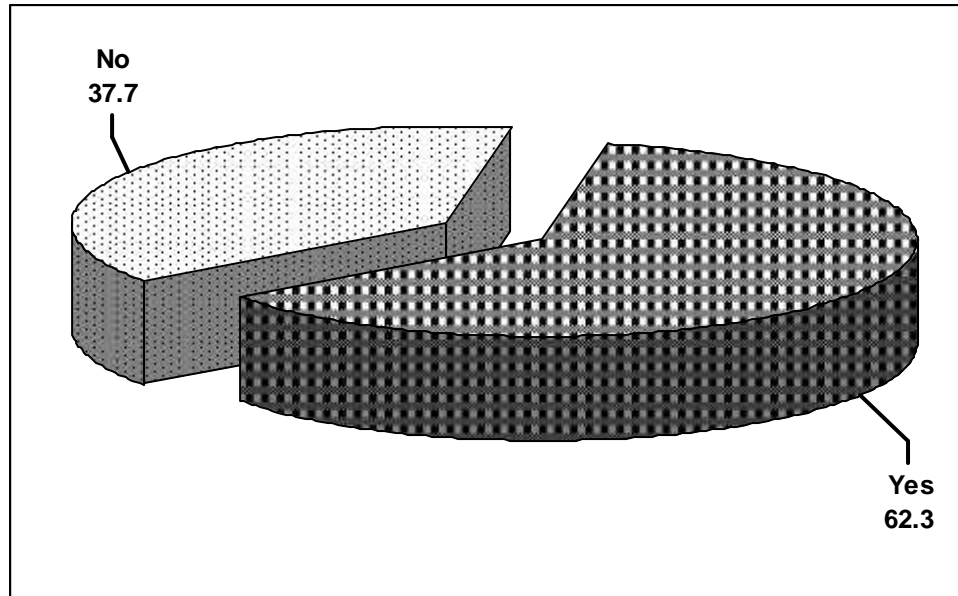


Fig. 6.4: Participation in Finalizing CFUGs Operational Plans

Source: Field Survey, 2009

The figure 6.4 above discovers the fact that out of the total respondents 62.3 percent had reported that they participate in the finalization of the operational plans of the CFUGs. While 37.7 percent of the respondents had stated that they do not participate in the finalization of the operational plans. This figure too shows that large number of female users member do not participate in the finalization of the plans and policies of the users committees.

6.7.3 Participation in the Formulation of Users Groups

The involvement of the female in the formation of the users groups were also been investigated and the collected results were analyzed through the help of the diagram in the figure 6.5 below.

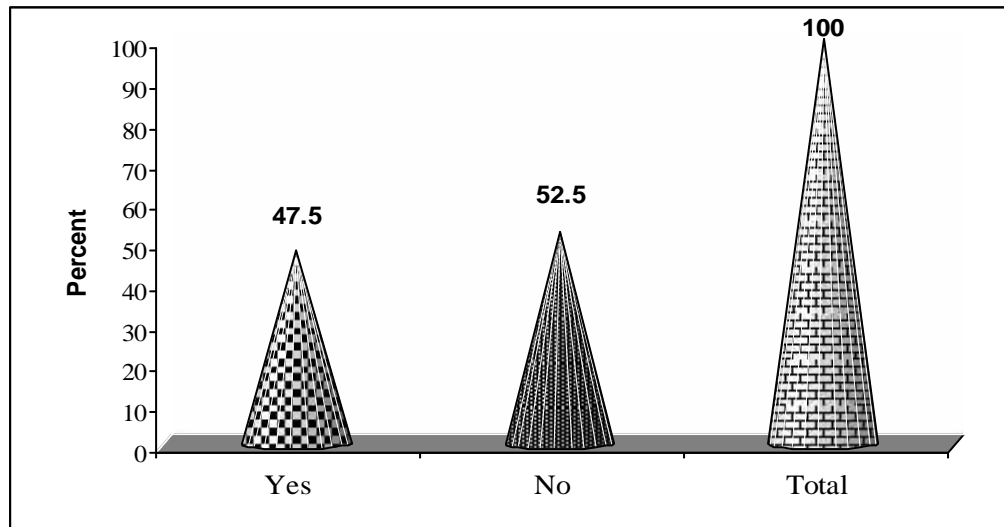


Fig. 6.5: Participation in Formulation of Users Groups

Source: Field Survey, 2009

The figure 6.5 above shows the facts about the female's involvement in the formation of users groups in the CFUGs. Out of the total of 61 respondents 52.5 percent of the respondents had reported that they do not involve in formulating the users groups. While 47.5 percent of the respondents had marked that they participate in formulation the users group by their CFUGs. The rate of female involvement in the formation of users groups found to be than that of males less.

6.7.4 Participation during Distribution of Forest Products

Interview was also taken about their participation in the distribution of the forest product. The amazing fact was that during the distribution of the forest product the business of the female at domestic chores made them to stay at home, so most of the female respondents had reported that they do not participate in the time of forest product distributions. The clear fact is studied through the help of following table 6.7 below.

Table 6.7 Participation in Forest Product Distribution

Related Factors	Frequency	Percent
Yes	20	32.8
No	41	67.2
Total	61	100.0

Source: Field Survey, 2009

The table 6.7 above demonstrates that out of the total of 61 respondents 67.2 percent had marked that they do not participate while distribution of the forest product is made rather they sent the male members, while 32.8 percent of the respondents had reported that they participated at the time of distributing the forest product among the users. It is clear from the table 6.7 above that females' involvement is negligible in the distribution of forest products.

6.8 Obstacle In Participating in Meeting and Assembly

The data of above table above and the figure gives the picture that the rate of females involvement is marginal. And the researcher of the study had made an attempt to investigate the reasons behind the low participation of the female in the *Tibrekot* CFUGs. The reported responses of the respondents were presented in the table 6.8 below it is also the fact marked by the participants of the FGD session.

Table 6.8 Hindrance Factors in the Access of Participation for the Female

Factors that Obstacles	Frequency	Proportion
Cultural and Social Norms	32	52.5
Household Chores	10	16.4
Lack of Education	20	32.8
Lack of Awareness	43	70.5
Business	7	11.5
Health	8	13.1

Multiple responses case of 61 respondents

Source: Field Survey, 2009

The table 6.8 above illustrates the fact about the factors that obstacles the female access in the participation in different programs organized by the CFUGs and the meeting and assembly of users groups. Out of the total respondents of 61 from the field study 70.5 percent of them had reported that due to the lack of awareness the female were not able to participate in the different program organized by the users committee and the meeting and assembly. Similarly, 52.5 percent of the respondents had marked that it is

cultural and social norms that hinders the female to participate in the programs. Likewise, 32.8 percent of the respondents had stated that it is lack of education or illiteracy that works as the obstacle of the female to participate freely among the literate groups; they feel shy to express their views due to their illiteracy. In the same way, 16.4 percent out of the total had reported that they have to remain busy in the domestic chores, so they do not get much time for attaining the programs run by the users committee and the meeting and assembly. Whereas, 13.1 percent of the respondents had reported that it is their health condition that hindered them in participating the programs and the meeting and assembly. Similarly, 11.5 percent of the respondents had reported that they were busy in looking after the business they owned and do not get much time to attain the programs and the meeting held by the users groups.

The participants of the FGD session had marked that it is due to the nature and the social structure of our society the female are still not given the similar chances to that of males. One of the FGD participants had reported that the female they themselves are not much interested in such programs due to the long historical tradition of our society. Some of them had committed that the female addressed in the programs just to meet the quorum required for the registering the organization so, they are used as a means to fulfill the requirement of the than contemporary authority.

6.9 Forwarding for Uplifting the Females Conditions

The recommendation marked by the respondents in the course of interview procession and the reported statement of the FGD participants. Much of them had reported that women should not only address as a means to meet the quorum requirement. In the same way the participants of FGD sessions had also suggested that special training for uplifting the female condition and access to the forestry managements must make the provision of incorporating all the females in the programs. They also had marked that the decision of the females must be given proper attention while formulating the constitution and making any decision. And all must be included in the distribution of the forest

products. The system must follow the democratic way in making decision if possible females must be address highly because they are more engage in the domestic works and the forest product are mostly used for the domestic purposed so the females issues must be properly address. Some of the FGD participants of FGD had reported that the awareness campaign should be lunched to create awareness among the female to make proper access of the female in the forestry management.

The respondents of the study area and the participants of the FGD had suggested that the control over the forest by the influential and rich people should be stopped and had to provide equal chances to all the users' members so they all could actively take part in the protection and make them accountable to the forest.

To sum up the chapter we can say that the female Forest user members are not much active in the decision making process and while formulating the decision the females less participated as due the lack of knowledge about the forestry and another factor is that due to the traditionalism the females do not get equal opportunities like male to express their views. It is also found that due to the household activities and agricultural work they do not get sufficient time to go to the CF programs.

CHAPTER-VII

SUMMARY, FINDINGS AND CONCLUSION

7.1 Summary

This study has mainly concentrated on the condition of female in community forest management. It deals with the role of female in decision making and ways of sharing the benefits. It has dealt with numerous research questions, based on Socio-economic condition, female's involvement in formulating constitution of CFUGs and freedom of expression and consideration of females' views while formulating or making decision.. Keeping the research questions in consideration, this research had drawn general objective as to analyze the condition of female in the users' group at community forestry management. To meet the research questions, the specific objectives of the study are given here under;

- 1 To explore the socio-economic condition of the Users in the area.
- 2 To analyze the inclusive representation of women in decision making form and benefit sharing.
- 3 To analyze the access to information and opportunities to the females.

Basically, this is an academic study which aims to discover some new facts regarding the condition of the female in community forest and will help in formulating various policies regarding the female access to the users' group management. This study is mainly focused on female's status and role, their attitude and suggestions that are needed for the democratization of the management plans in CFUGS. We cannot undermine the importance of the women in the social development. Development being the progressive transformation of the society has to be inclusive, equitable and sustainable stated somewhat differently, the development that ignores the inclusiveness and equity is diametrically unsustainable. At the right time, right steps and plans must be formulated to address the gender issues in institutionalizing the management of the community forest. So it has investigated the issue on

females participation, need for the participation, how the users had incorporated and as well as it has focused on the level of income of the respondent. During this study, the literature on conservation of wetlands, Gender and forest, local's participation; natural resources in the world and in Nepal have been reviewed.

As a student researcher, it was bound with different limitation such as budget, time and space at only the role of female in decision making and way the benefit sharing in community forest. It was also unable to include other issues of female such as status, satisfaction, trainings, seminars etc. Researcher had selected the area purposive to get the intended knowledge about the condition of females in the community forest management. So the females of users groups of *Tibrekot* built in the area at the ward no 7,8 and 9 of Hemja VDC as the respondent of the study.

This study will utilize descriptive methodology in the form of social survey. At the first detail of the main elements of the methods to be used is given under. The households built in the ward no 7, 8 and 9 of this VDC has taken as universe and had made the census study. So, the total population frame was 61 households for the reliability of the data. For the purpose of the study observation, interview schedule, focus group discussion and two of the case studies were adopted as data collecting technique of sociological research, to collect qualitative and quantitative data. Thus, the data collected for this study is dominantly primary. When needed, some of the important secondary data have also been incorporated. The above data collecting tools were devised very carefully in order to ensure their validity.

For this purpose, the interview schedule prepared carefully, instruction of supervisor was included and refined the question in the interview schedule. Both structure and unstructured observations were made from time to time while in the field work process. Key informant interview and focused group discussion which were primary unstructured one also conducted. Observations, FGD, and key informant interview have yielded qualitative data, while

interview schedule has yielded both types of data. The FGD participants were the representative of female members of users group and the personal that have long experience of the females status and the condition in the community forest management. The collected data have been analyzed by using computer program SPSS 11.5 while qualitative data have been arranged manually and analyzed descriptively. Results of quantitative data analysis have been shown by using various tables, charts and diagrams.

Women and forestry have a closer link in the rural areas where life is shaped and decreased by availability and access to basic resources such as water, fuel, wood and fodder. If women are involved in every stage of CF managements planning process, the chances of their voicing their opinion and making people listen to them are increased when communities are formed with women representation.

7.2 Findings of the Study

During the field survey, it has been explored and examined the different aspects regarding the condition of the female and the community forest management. The major findings of the study are listed below:

-) Out of the total respondents 52.5 percent were reported that they are illiterate, while, 29.5 percent out of the total had marked that they were normal literate. Similarly, 11.5 percent of the respondents were found to have passed SLC. While 6.6 the least percent of the respondents were found to be under SLC.
-) In relation to the type of family; 57.4 percent of the respondents were found to be living in the nuclear families, while 42.6 percent of the respondents had reported that they lived in the joint families. The joint family is in decreasing trend.
-) In relation to gaining of information regarding the users groups programs, 54 percent of them had reported that they get the information

while 46 percent of the respondents had reported that they do not get the information about the programs.

-) It shows that 45.9 percent of the respondents receive the information through the system of home to home information relying system, while 44.3 percent of the respondents marked that they use the public notice board of the committee to get the information, while 3.3 percent of the respondents had reported that they get the information through the *Katwal* system. In the same way 6.6 percent of the respondent had marked that they get the information through the help of their friends.
-) Out of the total respondents 46.4 percent of them had reported that the reason for not getting the information is because of the socio-cultural discrimination, in the same way, 17.9 percent each of the reported that because of the fear of sharing the benefits among all they do not share the information, Similarly it has also been reported that the information system is very weak, and some other had marked that they do not have interest toward the programs so they do not concern about it.
-) Out of the total respondents of 61 from the field study 70.5 percent of them had reported that due to the lack of awareness the female were not able to participate in the different program organized by the users committee and the meeting and assembly Similarly, 52.5 percent had marked that it is cultural and social norms that hinders the female to participate in the programs. Likewise, 32.8 percent had stated that it is lack of education or illiteracy that works as the obstacle of the female to participate freely among the literate groups; they feel shy to express their views due to their illiteracy.
-) Out of the total 50.8 percent of the respondents marked that the users committee consider educational status of the member as a prominent factor in decision making process. Similarly, 14.8 percent had reported that socio-economic condition of the member. While 11.5 percent had

reported that the caste system play important role in making the decision.

) Out of the total respondents 52.5 (32) percent of the respondents had reported that they only sometime express the views and ideas freely. Similarly 42.6 (26) percent had reported that they freely express their view in front of the committee members. But, 4.9 (3) percent had reported that they do not express the ideas.

) From the field study report 62.3 (38) percent of the respondents had reported that their views were considered while formulating the decision of the users groups. In the same way 19.7(12) percent had marked that very often their views were considered and 18 (11) percent of the respondents had reported had their view were not consider while making decision.

) Form the field report 77 percent of the female had reported that they get the chances to express their view and opinion freely, while 19.7 percent of the respondents had reported that they do not get the free chances to put their views in the decision making process. Whereas, 3.3 percent of the respondents had reported that only some time they get the chance to put their opinion freely. But all the time it is made by the influential persons.

) The study shows that 90.1 percent of the respondents involves while making the decision and marked that the user member call all the user groups and formulate the decision. Similarly 6.6 percent of the respondents had reported that the decision is made by passing the agenda by the committee members. In the same way 3.3 percent of the respondents had marked that decision is made by passing the agenda by the influential person.

7.3 Conclusion of the Study

On the basis of the above finding it can be concluded that the condition of female in community forest management specified to their role in decision making and participation in benefit sharing is not satisfactory. It was not properly institutionalized. It had been noted that the role of female in CFUGs management lacks proper address by the concerned committees. Distribution pattern lack democratization. Forest products are not properly distributed and only elite groups have high influence over the issues of forest managements. The gender is a major issue that makes strong matter in the CFUGS.

The study revealed that in most cases women were still underestimated by men and treated as second class citizens, often due to lack of technical expertise, lack of feeling of ownership, lack of leadership skills and even lack of technical support from DFO. Moreover the insufficiency of forest products to satisfy the needs of the households, affects their participation in CF management activities. Some women respondents even hesitated to answer the researcher's question regarding ease of collection and easy availability of resources.

Therefore, keeping all the facts in consideration, it can be concluded that issues of females must be rightly addressed in the management of forest. The female should be incorporated in the formation of constitution and give the proper space at the time of decision making. The female members should be given the chances to express freely and create the environment so that the entire female member can express their views freely. In the same way their views must be considered at both the stage of making decision and involving them at different activities.

References Cited

- Agrawal, B., 1997. *Environmental Action-Gender Equity and Women participation, development and change*. Vol-28, Pp-1-43.
- Belbase and Pyakural, 2000; *The Speech for Equality; a Human Right Issue*, Forum for Protection of Public interest (Pro Public) UNIFEM, Gender Equality Education.
- Bajade, M.R., H. Luintal, and H.R. Neupane, 2004. *An Action and Learning Process for Socail Inclusion in Community forestry. 25years of Community Forestry*. Pp-480-488.
- Baral, N. 1993. *Where is our CF?* Banko Janakari 4(1) pp. 12-15.
- Bhadra, C., and B.S., Karki, 2002. *Assessment of the Role of Women in Water Resources Use in Annapurna Conservation Area*. NTNC, Nepal.
- Bhatta, B. 2002. *Access and Equity in the Terai Community Forestry Program*. Winrock International, Nepal.
- Bhattarai, B. and H. Ojha 1999. *Distributional Impacts of Community Forestry: Who is Benefiting from Nepal's Community Forests?* Discussion Paper.
- Bhusal, Shanti, 2006. *Educational and Socio-Cultural Status of Nepalese Women*. Himalayan Journal of Sociology and Anthropology. Vol. III, Pp-141-142.
- Chetry, D.B., 2008. *Changing Occupational Pattern among the Bishowkarmas; a case study of Hemja VDC*. An unpublished dissertation submitted to Depatment of Sociology/Antropology Prithivi Narayan Campus. Pokhara, T.U. Nepal Under the Harka Gurung Research Fellowship 2007, New ERA Kth.

- Chhetry, G, and S., Rana, 1995. *A Gender Analysis of Women's Participation in community forestry*. A Report to the Nepal Australian Community forestry Project.
- Chhetry, R.B., and w.J. Jackson, 1994. *Community Forestry for Rural Development in Nepal; some prospect and problem*, Tribhuwan University and Nepal-Australia community forest project (NACFP) Kathmandu.
- Gautam, N., 2005. *Specail Study on Collaborative Forest Management in Nepal's Terai*. Report submitted to institute of Forestry, Pokhara, Nepal.
- Graner,E., 1997. *The Political Ecology of Community Forestry in NEpal*. Verlag Fur Entwicklungspolitik, Saarbucken, Studies in Geography, Germany.
- Gilmour, D.A. and Fisher, R.J. 1991. *Villagers, Forests and Foresters: The Philosophy, Process and Practice of Community Forestry in Nepal*. Sahayogi Press,Kathmandu
- Gurung, Harka(2006): *From Exclusion to Inclusion: Socio-Political Agenda for Nepal*; Social Research
- Hobley, M. 1996. *Participatory Forestry: The Process of Change in India and Nepal*.Overseas Development Institute, London.
- ICIMOD, 1995. *Community forest; the language of life*. ICIMOD publication, Kathmandu, Nepal.
- _____, 1999. *Participatory Forest Management*. Implication for policy and human resources development in Hindu Kush- Himalaya, vol.V. Pp. 23-24
- Inserra, a.E., 1998. *Women's Participation on Community forestry in Nepal*. Banako Janakari. Vol-2(2). Pp-119-120.

- Pearl, R., 2003. *Common Ground Women's Access to Natural Resources and the United Nations Millennium Development Goals*. Women's Environmental Development Organization (WEDO). Pp.12
- K.C., Gupta, Bahadur, 2006. *Women's Participation in Decision- Making Process in NigaleBudhaghare Community Forestry of Bangsing Deurali VDC Sjangja*. An unpublished dissertation submitted to department of sociology/anthropology P.N. Campus Pokhara, T.U. Nepal.
- K.C., Prem, 2007. *Impact of Community Forests on Rural Women*. A case study from CF of Kaski district. An unpublished M.A dissertation submitted to Institute of Forestry Pokhara, Nepal.
- Kharel, S., 1993. *Women's Participation in Community forestry*. The Nepal Australian Community forestry Project's Experience, *Banko Janakari* Kathmandu. vol. 4, Pp. 5.
- Khanal, Haina, 2008, *Women's Participation in Community Forestry Management: An analytical study from two CFUGs in Kaski Nepal*. An unpublished dissertation submitted to department of Sociology/Anthropology Prithivi Narayan Campus, Tribhuwan University, Nepal.
- LFP 2005. *Pro-poor and Social Inclusion Strategy*. Draft Report, Livelihood and Forestry Programme, 2005.
- Raut, N., 2006. *Role of Gender in the Management of Community Forest*. A case Study from Two Community Forests of Mohattari district, An unpublished dissertation submitted to Institute of Forestry Pokhara Nepal.
- Ronnie, Vernooy, (ed), (2006): *Socail and gender analysis in natural resources management*; Learning Studies and lesion from Asia, Saga Publication,New Delhi.

- Seth, Mera, 2000. *Women and development*. The Indian experiences, Sage Publication, New Delhi.
- Shahbaz, B; Ali, T and Sureli, A.Q. 2005. *Participatory Forest Management: Analyzing Livelihood Assets of Forest Users in North-west Frontier Province of Pakistan*. The journal of Forestry, Nepal Foresters' Association: Vol. XII (3).
- Shahi, B.B. 2000. *Sustainable CF management in the mid-hills of Nepal*. Case studies from Kaski and Tanahun Districts. A Thesis Submitted for the Partial Fulfillment of Masters' Degree of Science in Forestry. Asian Institute of Technology, Thailand.
- Shrestha, Indira and Krishna Hachhethu, 2002. *Women and Governance*, Shtrii Shakti (S2) Publication Kathmandu, Nepal.
- Shrestha, A.D., 1999. *Searching for Women's Voice in Hindu Kush Himalayas: A case study in Nuwakot District*. ICIMOD Nepal. Pp. 269.
- Siddiqi, N., 1989. *Women in Forestry*. NACFP, Kathmandu, Nepal.
- V.D.C, (2003): *Village profile*: Hemja.

APPENDIX-1
INTERVIEW SCHEDULE

Condition of female in Community Forestry Management;
A case study of 'Tibrekot' community forest user Groups at Hemja VDC.

A. General Socio-Economic Introduction of the Family.

1. Name of the User Group member:-..... Caste.....Age.....
Religion.....
Name of the respondent:-.....

S.N	Question	Answers	Skip	
2	Education	a) Illiterate d) ALC passed d) Bachelor and above	b) Literate c) Under SLC e) I.A passed	
3	Occupation	a) Housewife d) Govt. Service f) other (Specify)	b) Farmer c) Business e) Private service	
4	Numbers of Family member	-----		
5	Type of family	a) Nuclear	b) Joint c) Others	
6	Type of House	a) Cemented d. Other.....	b. Mud masonry c. Hut	
7	Average monthly income	a) up to 3000/- c) 5000-10000/-	b) 3000- 5000/- d) 10000 and above	
8	If yes, than how much do you have?	a) khet....ropani	b) Bari.....ropani	
9	Food Sufficiency from the production of own land?	a) Less than 3 months c) 6-12 months	b) 3-6 months d) more than 12 months	
10	Possession of Livestock	a) cow _____ c) ox _____	b) Buffalo _____ d) Goat _____	




B. Decision Making, Membership in CF and Access to Information and Opportunities.

S.N	Question	Answers	Skip	
11	How many members are ther in executive committee?	----- Members		
12	How many female members are their in user group executive committee?	----- Members		
13	How often is meeting held in a year related to forest?	-----		
14	What is the process of decision making generally followed in your CFUG?	a) Passed agendas by committee members. b) Involved all CFUG members. c) Passed agendas by only influential person. d) Other.		
15	What do you think about the decision that has been made by the user group committee?	a) Excellent* → d) very poor	b) Good * → c) Not so good	17

16	If not so good or very poor. Why?		
17	What do you think the decision is?	a) Democratic b) Participatory c) Neutral d) Autocratic	
18	Does the user use committee give chances to females to put their views?	a) Yes b) Only some time d) No	20
19	If no. Why?		
20	Does the female express their views freely?	a) Yes b) Only some time d) No	22
21	If no. what may be the causes?		
22	Does the user committee consider to females views while taking/making the decision?	a) Yes b) Only some time d) No	
23	What are the factors affecting decision making?	a) Educational Status b) Size and condition of forest c) Socio-Economic condition d) Caste system	
24	What hinder you to take participation in meting and assembly?	a) Cultural and Social Norms b) Business c) Household work d) Awareness e) Health f) Nobody listen the voice	
25	Are you informed for all programs of CF?	a) Yes b) No	27
26	If no. why?	a) Fear of sharing benefits b) weak information system c) Socio-economic discriminaton d) Others	
27	Did CFUG organize any training, tour and other special programs for their users?	a) Yes b) No	30
28	If yes, do you participate on that?	a) Yes b) No	30
29	If no. Why?	a) Not informed b) No interest c) Discrimination d) others	
30	Do you know about decision that is made by Executive committee?	a) Yes b) No	32
31	If yes, how do you know?	a) Neighbors b) from notice of EC or as member c) Other members of group d) Other	
32	What is the method of information sharing in your CF?	a) Public Notice b) Home to home information system d) <i>Katuwal</i> System d) Other	
33	Have you participate in the following events? Write Y for yes and N for no	a) Meeting when constitution was finalized. _____ b) Meeting when operation plan was finalized. _____ c) Meeting when user groups was formed _____ d) Meeting when forest product were decided to distribute _____ e) Meeting when decision related to fund mobilization _____	

C. Benefit Sharing, Distribution of forest products and fund mobilization mechanism.

S.N	Question	Answers	Skip
34	The distribution of forest products among CF users is;	a) Fair b) Biased c) Highly Biased	

35	How is the benefit shared?	a) Equality Basis b) equity basis a per family numbers c) According to Operational Plan d) According to decision made by EC. e) decision by influential/ Elite Person	
36	What is the forest products distributed among the users?		
37	Are you satisfied with the forest product distribution system?	a) Yes  b) No	39
38	If no. what should be done?	a) Equitable Distribution b) Low Charges c) Access d) Others	
39	Do you think there is any discrimination in benefit sharing system?	a) Yes b) <u>No</u> 	41
40	If yes, what is the cause of the discrimination?	a) Social and Cultural b) Economic c) Political d) Other	
41	Do you know about the total saving amount in CFUG fund?	a) Yes b) No.	
42	Has your CFUG provided loan to users from CFUG fund?	a) Yes b) <u>No</u> 	46
43	If Yes, have you taken loan?	a) Yes b) No	
44	How much did you barrowed?		
45	If yes, for what purpose?		
46	Are you satisfied with CFUG fund mobilization?	a) Yes b) No	
47	Does the user group committee set price for the forest product?	a) Yes b) No c) Don't know	
48	If yes, price for the forest product is;	a) Price is too High b) Too Low c) Its normal	
49	At last you have any suggestion for this work.		

APPENDIX-2

CHECK LIST OF FOCUS GROUP DISCUSSION.

- a. What is the situation of female in CF?
- b. What is the situation of women participation in decision making in CF?
- c. Do the women hesitate to accept responsible post in FUG?
- d. Condition of Female in the access towards benefit and information sharing system in CF?
- e. Does the FUG incorporate the issues that concern women in Operational Plan?
- f. What is the status of women's participation in forest management work?
- g. How is the benefit sharing system among FUGS?
- h. How is the forest product distributed in the Tibrekot Community forest?
- i. Is the female having equal access in information system and formulation the constitution of CF?
- j. Do the female express their views freely?
- k. What are the causes for the not getting information by the females?
- l. Why the views of female's are not rightly been addressed?

APPENDIX-3

Name list of the Focus Group Discussion

FGD Session

Female members

1. Maya Devi Kunwar
2. Sita Poudel
3. Sakuntala Kunwar
4. Anita Gurung
5. Maya Bk
6. Shova Poudel
7. Khem Maya BK
8. Shanti Kunwar

Male members

1. Dambar Singh Besnet (Campus chief Gaurishankar Campus Hemja)
2. Durgadutta Banstola (Member of MSDO)
3. Denesh Tripathi (Chairman of Hemja youth Club)

APPENDIX-4

PHOTO GALLERY



Tibrekot Community forest



Temple in the Heart of Tibrekot Cf



Women looking after the goat



Interview with the respondent



Interview with the respondent



Interview with the respondent





Interview with the respondent



Picture of FGD session