

**IMPACTS OF HUMAN MIGRATION IN GALKOT
MUNICIPALITY, BAGLUNG**



A Thesis

**Submitted to APF Command and Staff College,
Faculty of Humanities and Social Sciences
Tribhuvan University
in Partial Fulfillment of the Requirements
for Master's Degree in
Security, Development and Peace Studies**

Submitted by

PREM PRASAI

Eighth Batch (2079-2081)

Roll No. MSDPS40063

TU Registration No. 6-1-2-519-96

APF Command and Staff College

Sanogaucharan, Kathmandu, Nepal

May, 2024

**IMPACTS OF HUMAN MIGRATION IN GALKOT
MUNICIPALITY, BAGLUNG**

A Thesis

**Submitted to APF Command and Staff College,
Faculty of Humanities and Social Sciences
Tribhuvan University
in Partial Fulfillment of the Requirements
for Master's Degree in
Security, Development and Peace Studies**

Submitted by

PREM PRASAI

Eighth Batch (2079-2081)

Roll No. MSDPS40063

TU Registration No. 6-1-2-519-96

APF Command and Staff College

Sanogaucharan, Kathmandu, Nepal

May, 2024

DECLARATION

I hereby declare that this research paper entitled “**Impacts of Human Migration in Galkot Municipality**” submitted to the Faculty of Humanities and Social Sciences, Department of Security, Development and Peace Studies, Tribhuvan University is entirely my original work prepared under the guidance and supervision of Prof. Dr. Dandapani Adhikar. I have made due acknowledgements to all ideas and information borrowed from different sources in course of preparing this research paper. The result of this research paper has not been presented or submitted anywhere else for the award of any degree or any other purpose. I assure that no part of the content of this research paper has been published in any form before. All right is reserved on researcher.

Signature:

Name: Prem Prasai

APF Command and Staff College

Date: 2080/ / (May, 2024)



**Government of Nepal
Ministry of Home Affairs
APF Command and Staff College**

Ph. No. :- 01-4513159/9851072030

Email :- paacademic2015@gmail.com

Website:- <https://csc.apf.gov.np>

Ref. No.: - (080/081)/

Academic Section Sanogaucharan
Kathmandu

Date: - 2081/02/

LETTER OF APPROVAL

This Thesis entitle “**Impacts of Human Migration in Galkot Municipality, Baglung**” submitted by **Prem Prasai** to APF Command and Staff College, Faculty of Humanities and Social Sciences, Tribhuvan University in partial fulfillment of Master Degree in Security, Development and Peace Studies has been approved by the undersigned members of the Evaluation Committee.

Evaluation Committee:

.....

Prof. Dr. Dandapani Adhikari
Thesis Supervisor

.....

Associate Prof. Dr. Chiranjivi Acharya
External Examiner

.....

Assistant Prof. Gaurav Bhattarai
External Examiner

.....

SP Yadav Bishwakarma
Internal Examiner

.....

SP Suresh Sapkota
Internal Examiner

ACKNOWLEDGEMENTS

This research paper is produced with the consultation and support of Galkot Municipality various resources, Mayor, vice Mayor, experts, related agencies and analysis of various concerned books, journals, reports, newspapers along with the field survey. I would like to express my sincere gratitude to all those concerned personalities, concerned organizations, and respondents for feeding me their knowledge, experience and suggestions.

I have honor to express my deep indebtedness to my supervisor Prof. Dr. Dandapani Adhikari sir of APF Command and Staff College, Sanogaucharan, Kathmandu for his valuable direction, kind guidance, continuous cooperation and timely supervision. My special acknowledgement goes to Commandant respected DIG Anjani Kumar Pokharel sir, Mayor of Galkot Municipality, Chief Instructor SP Yadav Bishwakarma, Academic Coordinator SP Suresh Sapkota, Course Coordinator DSP Ram Krishna Maharjan, all DSs and entire faculty members of APF Command and staff College. I also thank my colleagues for creating conducive learning environment and encouraging me all the time.

I am indebted to all faculty members, officers, library management and administration team of APF Command and Staff College for their support, assistance and providing suitable environment for the study.

Finally, I am extremely grateful to respected mother and dear wife for their love, prayers, caring and sacrifices for educating and preparing me for my continuous study and also very much thankful to my family for understanding and infinite support to complete this thesis.

Prem Prasai

MSDPS, APF Command and Staff College

Sanogaucharan, Kathmandu

ABSTRACT

Galkot Municipality, situated in the Baglung district of Gandaki Province, Nepal, has experienced significant human migration in recent years. Consequently, Galkot has become one of the highest remittance-generating areas in the country, with migration profoundly influencing the region's socio-economic and demographic landscape. The primary objectives of this research are to explore the socio-economic impacts of migration, analyze demographic shifts, and identify the drivers of migration within Galkot. Specifically, the study examines how remittances enhance local infrastructure and education, how the outflow of young people affects cultural aspects and community vitality, and what factors push and pull individuals to migrate.

A mixed methods employed where quantitative data were collected through surveys, capturing migration patterns, remittances, and socio-economic impacts. Qualitative data were gathered through in-depth interviews with Municipality officials, community leaders, and migrants providing a deeper understanding of social impacts, migration dynamics, and community cohesion. Thematic analysis was applied to the interview insights. Additionally, secondary data on migration trends were also reviewed to contextualize the findings. The results reveal that migration has brought significant economic benefits to many households through remittances, which have improved local infrastructure, education, and living standards. However, Galkot faces notable demographic challenges, including an aging, isolation population due to the outflow of young people and children lack the parental love and care. Social consequences such as family separation and changes in traditional family structures and cultural changed were also observed.

In conclusion, while migration offers substantial economic advantages, it also entails social and demographic challenges that require attention from policymakers. Sustainable development strategies must address these issues holistically, considering both migrants and the remaining population to foster a balanced and prosperous happy society in Galkot.

Keywords: human migration, Galkot Municipality, socio-economic impacts, healthcare, remittances.

TABLE OF CONTENTS

TITLE PAGE	
DECLARATION	iii
LETTER OF APPROVAL	iv
ACKNOWLEDGEMENTS	v
ABSTRACT	vi
TABLE OF CONTENTS	vii
LIST OF TABLES	x
LIST OF FIGURES	xi
LIST OF ABBREVIATIONS / ACRONYMS	xii
CHAPTER I : INTRODUCTION	1-10
1.1 Background	1
1.2 Human In- Migration to Galkot Municipality from other Places	4
1.3 Statement of the Problem	8
1.4 Objectives of the Study	9
1.5 Significance of the Study	9
1.6 Limitations of the Study	10
CHAPTER II : LITERATURE REVIEW	11-21
2.1 Theoretical Overview	11
2.1.1 Pushing and Pulling Factors Model	11
2.1.2 Neoclassical Economics Theory	12
2.1.3 Social Network Theory	12
2.2 Review of Previous Studies	12
2.2.1 Evolution of Migration	12
2.2.3 Pulling and Pushing Factors	13
2.2.4 Socio-Economic and Cultural Impacts	16

2.3 Research Gap of the Review	19
2.4 Conceptual Framework of the study	21
CHAPTER III : RESEARCH METHODOLOGY	24-26
3.1 Research Design	24
3.2 Area of Study	24
3.3 Source of Data	25
3.4 Techniques and Tools of Data Collection	25
3.4.1 Key Informant Interview (KII)	25
3.4.2 Focused Group Discussions (FGD)	26
3.4.2 Survey questionnaire	26
3.5 Ethical Consideration	26
CHAPTER IV : FINDINGS AND DISCUSSIONS	27-48
4.1 Demographic trend of Migrants	27
4.1.1 Migration Patterns	29
4.2 Pulling factors for human migration	33
4.2.1 Education	33
4.2.2 Employment	33
4.2.3 Health Facilities	33
4.2.4 Accessibility	33
4.2.5 Comfortable Life	34
4.3 Pushing Factors for human migration	34
4.3.1 Traditional Profession Decline	34
4.3.2 Occupation Limitations	34
4.3.4 Maoist Insurgency	34
4.3.5 Social Factors	35
4.4 Child birth rate in Galkot Municipality	37
4.5 Economic Factors	38

4.5.1 Post returnee of foreign employment impact	40
4.5.2 Financial Sectors	41
4.6 Cultural factors	43
4.7 Migration impacts on Community	44
4.7.1 Challenges and Opportunities	45
4.7.1 Positive and Negative aspects of Migration	45
4.8 Major Findings	47
4.9 Insights from KII and FGD from community members	48
CHAPTER V : SUMMARY AND CONCLUSION	51-52
5.1 Summary	51
5.2 Conclusion	52
REFERENCES	54
APPENDICES	57-66

LIST OF TABLES

Table 1	Population dynamics of Galkot Municipality during 2011-2021	3
Table 2	Foreign Employment by age Group from Galkot Municipality	28
Table 3	Most foreign employment destination by country in Galkot Municipality	30
Table 4	Child birth rate in Galkot Municipality during 2078-2080	38
Table 5	Returnee from Foreign employment to Galkot Municipality	40
Table 6	Positive and Negative Impact of human migration in Galkot Municipality	46

LIST OF FIGURES

Figure 1	Ward Wise Population Distribution in Galkot Municipality	4
Figure 2	Population by former place of residence in migration to Galkot	5
Figure 3	Household heads by sex and age groups in migration to Galkot	6
Figure 4	Absent population living abroad by sex in Galkot Municipality	7
Figure 5	Populations with absentees living abroad in Galkot	8
Figure 6	Conceptual Framework of the Study in Galkot Municipality	21
Figure 7	Location Map of Galkot Municipality	25
Figure 8	Caste Presence in Community in Galkot Municipality	29
Figure 9	Current status of returnee by ward in Galkot Municipality	31
Figure 10	Received remittances spent in various sectors in Galkot	32
Figure 11	Social Impacts due to the social institutions in Galkot	35
Figure 12	Current Marital Status of Galkot Municipality	37
Figure 13	Trade and Business in Galkot Municipality	39
Figure 14	Remittance received by Country in Galkot Municipality	34

LIST OF ABBREVIATIONS / ACRONYMS

APA	American Psychological Association
CPN(M)	Communist Party of Nepal (Maoist)
FGD	Focus Group Discussion
KII	Key Information Interview
NLSS	Nepal Living Standards Survey
PRB	Population Reference Bureau
SIM	Subscriber Identity Module
SMEs	Medium-Sized Enterprises

CHAPTER I

INTRODUCTION

1.1 Background

Migration has been a defining feature of human history, shaping societies, economies, and cultures. Migration represents a type of spatial movement wherein individuals change their habitual residence between distinct geographic areas (Geller, 1997). An individual who relocates beyond the borders of their own country or within different regions of the same country is labeled as an out-migrant (Borjas & Crisp, 2005).

Emigration denotes the departure from a specific territory, typically in the context of international migration. International migration serves as a potent emblem of worldwide disparity, encompassing differences in wages, employment prospects, and ways of life (Maharjan, 2015). Every year, millions of individuals and their families relocate across borders and continents, aiming to narrow the perceived chasm between their own circumstances and those of more affluent regions (Black et al., 2006).

Migration, especially international migration, involves significant risks and costs. While it often stems from income and wealth differences between countries, it doesn't always reduce inequality as many migrants' hope. The impact on inequality depends on how these costs and benefits are shared within and between the countries involved. The effect on the countries migrants leave also depends on who migrates. If most migrants were from the poorest groups and they benefited from moving, it could reduce economic inequality. However, migrants are not always the poorest, they don't always benefit, and other factors can vary (Black et al., 2006).

Moreover, the recent infrastructural developments, such as improved road connectivity, have paradoxically not stemmed the tide of out-migration. Instead, they have facilitated the ease of movement, leading to empty houses and barren fields, a testament to the ongoing challenge of retaining the population (Sitompul, 2023).

The impacts of such movements are profound, affecting the demographic structure, labor force, and even the cultural fabric of the community. For instance, out-migration has led to a shortage of skilled manpower and a notable absence of male members in the households, altering the traditional roles within families and the community at large (Susan Forbes Martin, 2004). The local

government's efforts to counteract this trend through investment in agriculture and infrastructure projects highlight the complexity of addressing the root causes of migration (Sitompul, 2023).

IOM defines migration as the movement of persons away from their place of usual residence, either across an international border or within a State (IOM, 2019). The term, not defined by international law, broadly refers to anyone who relocates from their usual place of residence, either within a country or across international borders, temporarily or permanently, for various reasons (IOM, 2019). It encompasses several legally recognized categories, such as migrant workers and smuggled migrants, as well as individuals whose movement or status is not clearly specified under international law, like international students (IOM, 2024).

A person who moves to a country other than that of his or her usual residence for a period of at least a year (12 months), so that the country of destination effectively becomes his or her new country of usual residence. From the perspective of the country of departure, the person will be a long-term emigrant and from that of the country of arrival, the person will be a long-term immigrant (IOM, 2019).

Since the early 19th century, men from the village migrated to India for employment in various roles, including the Gurkha regiments, civil service, security, domestic work, and manual labor in mines, farms, factories, restaurants, and hotels. In 1839, following a special treaty between the Nepalese government and the Sikh Empire (encompassing much of present-day northern India and Pakistan), Nepalis were also recruited into the Sikh army (Kansakar, 2003).

Galkot Baglung, a region with a rich history and diverse demographic dynamics, migration has played a significant role in its development, explores the various impacts of migration (Gautam, 2005). Galkot is a beautiful, full of natural shades and a municipality with abundant potential on the banks of Daramkhola and Gaudi rivers, in the lap of Ghumte Hills. This municipality has 194.39 square km. is made up of with merging the former eight Village Development Committees (VDC) namely Dudilabhati, Narethanti, Hatia, Harichour, Malm, Kandewas, Pandavkhani and Righa (Gautam, 2005).

In Galkot municipality, people of different castes, languages, religions and cultures like Khas (Brahmin, Chhetri, Thakuri), tribal (Magar, Newar) minorities, Dalits and Muslims have been living (Dhami, 2023). Many people from this region have been to foreign country initially for various reason like for study, earn money and to unite with their family members. This out migration trend has been increasing in recent time more rapidly (Khatiwada, 2010).

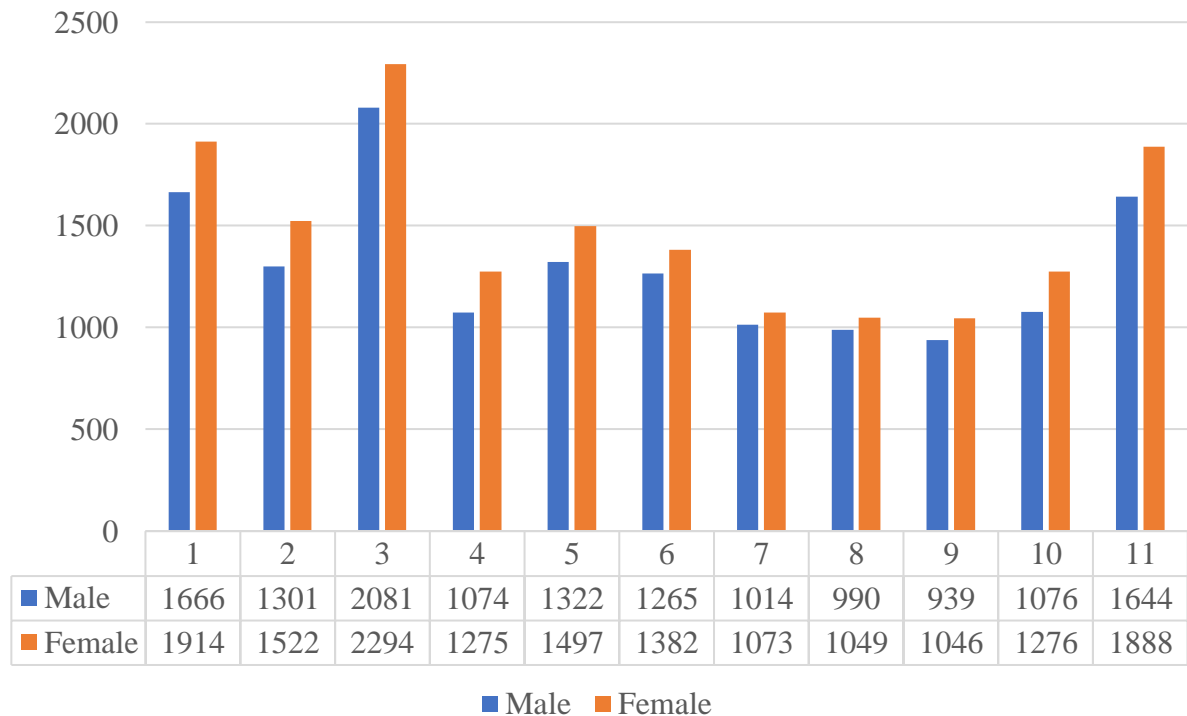
Table 1*Population dynamics of Galkot Municipality during 2011-2021*

Description	Year 2011	Year 2021
Household	7711	7,714
Population	33097	30,588
Male	14273	14372
Female	18824	16216

Source: Statistics office Baglung,2024

Table-1 provides detailed information about the population changes in Galkot Municipality from 2011 to 2021. During this period, the municipality had a total population of 30,588 across 7,714 households. Among these households, 5,086 youths from 3,270 households, which is about 42 percent, are currently working abroad. Out of those who sought employment overseas, 651 youths from 587 households have since returned. Out of those who went for foreign employment, 651 youths from 587 households have returned home. Looking at the overall data, 5,086 youths from this municipality are working in foreign employment where 22 percent are women (Galkot Municipality, 2023). Most of the youths from these communities have gone for foreign employment as there is majority of Brahmin community, Tribal community and Dalit community living in the municipality. Compared to the age group, about 76 percent of the people are in the age group of 21 to 40 years.

Looking at the data, it has been found that most of the youth in the age group who can actively participate in economic activities are employed abroad. As a result, the settlements within the municipality are becoming devoid of youth (Galkot Municipality, 2023). On the other hand, there is a shortage of young manpower in the formulation of local development plans and their implementation. It has been found that Japan is the main destination of people working abroad.

Figure 1*Ward wise population distribution*

Source: Galkot Municipality foreign employment poster 2080

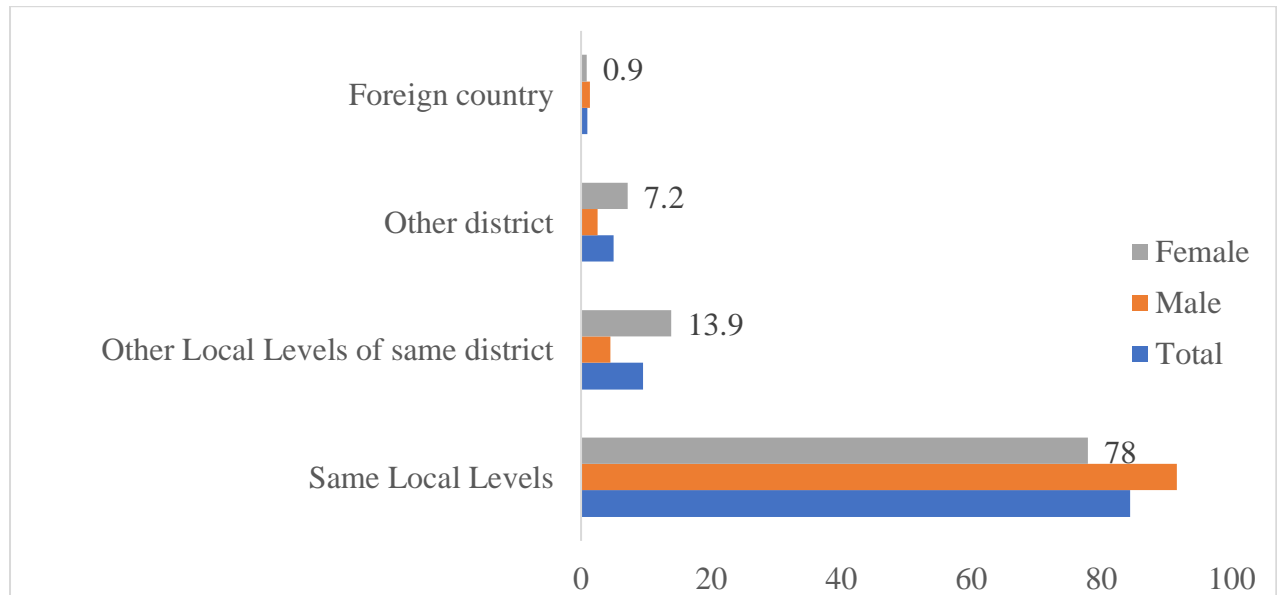
1.2 Human in- Migration to Galkot Municipality from other Places

The impacts of human migration of Galkot municipality have attracted the new residents from neighboring districts like Gulmi, East Rukum and people from other local levels like Badigard, Tarakhola, Kathekhola, Bareng, Dhorpatan and Baglung. The influx of new residents from neighboring districts and other local levels into Galkot Municipality due to human migration can have various impacts on the social, economic, and demographic landscape of the area. People who came from other places to Galkot majorly are poor people who don't have their own land and if land very few land which is not adequate to survive through agricultural production. Khas village of ward no 3 ,Thana village, Charaudi and Harichaur village of municipality are almost empty by leaving the old habitats of local and slowly occupied by other districts residents for their animal husbandry and cash crops (Galkot, 2024).

Dalits community are more attracted for last 5 years to foreign employment. People have increased the mentality of going abroad any cost at anyhow. They are not seeking local jobs within the Galkot Municipality.

Figure 2

Population by former place of residence in migration to Galkot Municipality



Source: CBS Nepal, 2024

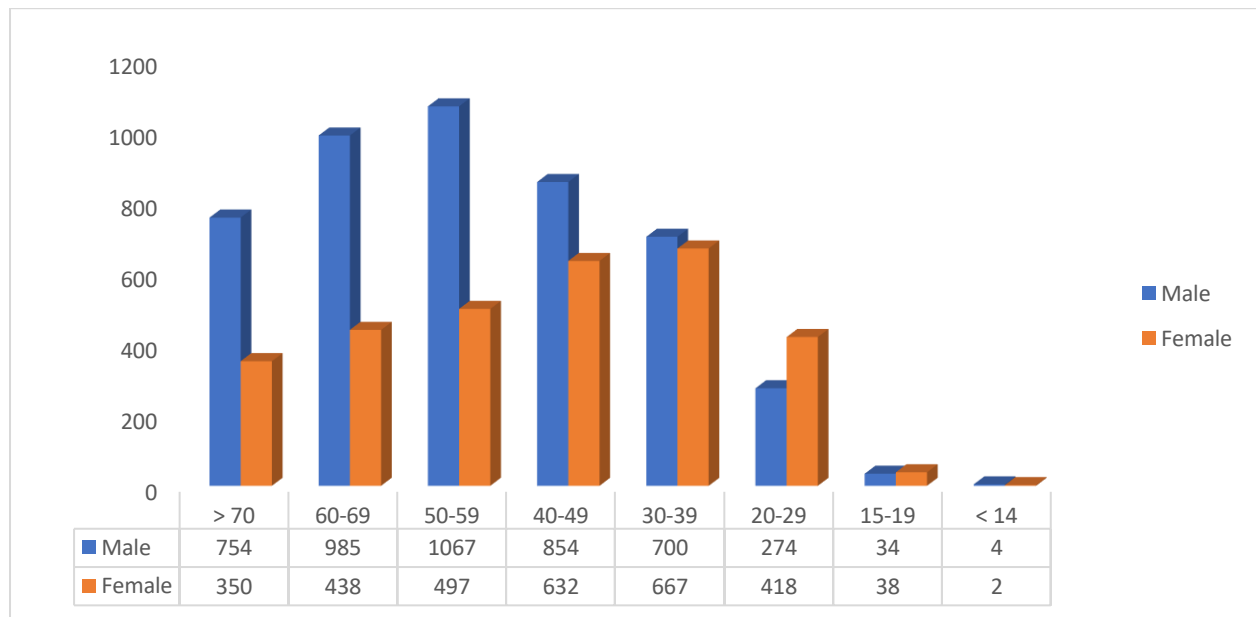
The percentage of individuals who are divorced is minimal, indicating that divorce is relatively uncommon in Galkot Municipality. Divorce represents the legal dissolution of a marriage and may occur due to various reasons such as marital conflict, irreconcilable differences, or cultural shifts in attitudes towards divorce. The low percentage suggests that divorce is not a prevalent phenomenon in the local community. Separation may occur due to marital discord, geographical distance, or other factors affecting marital relationships. While the percentage of separated individuals is small, it reflects the presence of marital instability or challenges faced by some couples in maintaining cohesive family units (Galkot Municipality, 2023).

The data presents the distribution of household heads across different age groups, ranging from less than 14 years old to over 70 years, old male and female household heads within each age group. This gender-disaggregated information is essential for understanding the roles and responsibilities of household heads, as well as any potential gender disparities or differences in household management and decision-making. Significant proportion of elderly household heads,

particularly those aged 60 and above(D. Kharel, 2016). The high numbers of household heads in the age groups of 50-59, 60-69, and over 70 years old suggest an aging population in Galkot Municipality.

Figure 3

Household heads by sex and age groups



Source: Galkot Municipality foreign employment poster 2080

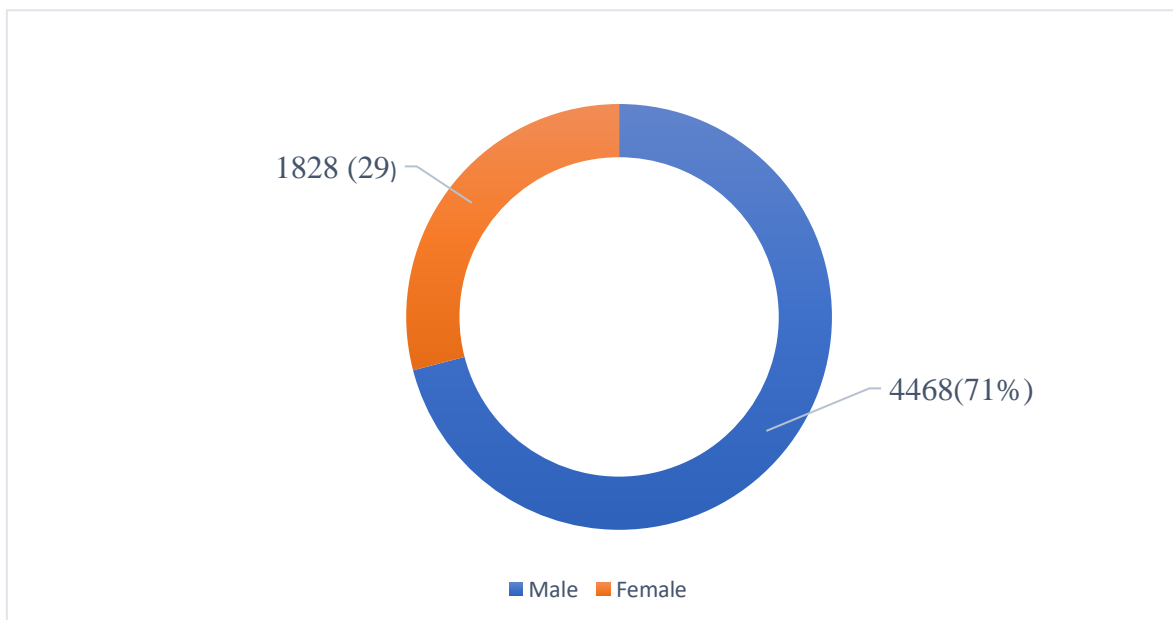
Figure 3 provides the population distribution between those absent from the country and those present provides valuable insights into the migratory patterns and demographic composition of Galkot Municipality(Dhami, 2023). The data indicates that 41.8% of the population from Galkot Municipality is currently absent from the country, presumably residing abroad for various reasons such as employment, education, or family reunification.

This proportion of the population represents a significant portion of individuals who have migrated internationally, contributing to the phenomenon of "diaspora" or overseas communities originating from Galkot Municipality. Understanding the characteristics and experiences of this absent population is essential for comprehensively(Galkot, 2024). On the other hand, 58.2% of the population is present within the country, indicating that the majority of residents remain in Galkot Municipality. This includes individuals who have not migrated abroad as well as those who may have migrated internally within Nepal but are still within the country's borders(Galkot Municipality, 2023). Analyzing the demographic characteristics, socioeconomic status, and

livelihood strategies of this population is crucial for understanding the dynamics of the local community, including factors influencing migration decisions, social cohesion, and community development. The data on the absent population living abroad by sex illustrates notable gender disparities in international migration patterns originating from Galkot Municipality. With 4468 male migrants compared to 1828 female migrants, the numbers indicate a substantial disproportionality in migration, with significantly more males than females residing abroad (Galkot Municipality, 2023).

Figure 4

Absent population living abroad by sex in Galkot Municipality



Source: CBS Nepal, 2021

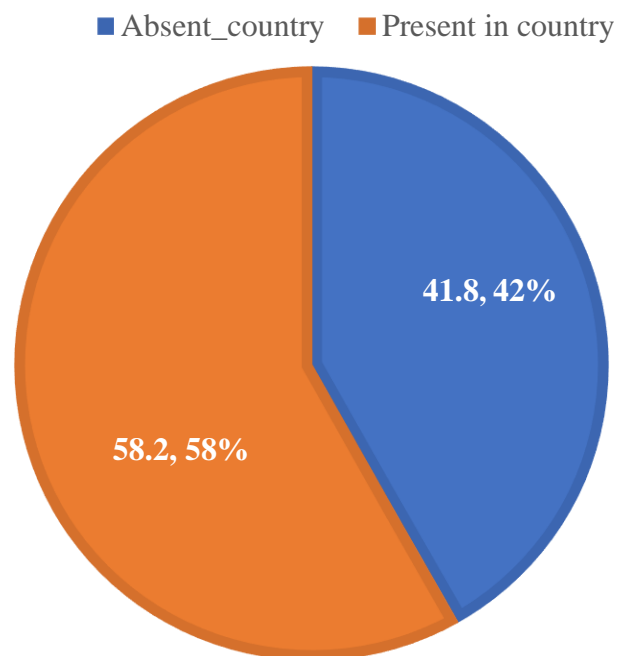
This discrepancy reflects broader societal and cultural norms wherein men are often encouraged or compelled to seek employment opportunities overseas to support their families economically. The higher number of male migrants suggests that they are more likely to undertake international labor migration, driven by the pursuit of better livelihoods and economic prospects.

Figure-5 showed male migration contributes significantly to household incomes through remittance flows, it also underscores the challenges faced by families due to the absence of male household members, including issues related to family separation, caregiving(CBS, 2021).

Recognizing and addressing these gender disparities in migration are crucial for ensuring equitable access to opportunities, promoting gender equality, and developing effective policies and programs to support migrants and their families, both in their country of origin and destination (CBS, 2021)

Figure 5

Populations with absentees living abroad of Galkot Municipality



Source: CBS Nepal, 2021

1.3 Statement of the Problem

Outmigration is a prevalent and persistent phenomenon in Galkot Municipality, a rural hillside area in Baglung district of Nepal, where people leave their homes for better opportunities in urban or foreign destinations. However, outmigration also has some consequences for the sending community, such as demographic changes, socioeconomic challenges, agricultural decline, and

social issues. Therefore, this thesis aims to fill this gap by conducting a study of Galkot Municipality, using a mixed-methods model approach that combines secondary data analysis and primary data collection through household surveys and semi-structured interviews and focused group discussions. The thesis has addressed the following research questions.

This research was guided by the following research questions:

- 1.3.1 What is the pulling and pushing factors of out-migration in Galkot Municipality?
- 1.3.2 what are the socio-economic and cultural impacts of migration out in Galkot Municipality?
- 1.3.3 How migration is accelerated in the process of out -migration and affects the life of people in Galkot Municipality?

1.4 Objectives of the Study

The main objectives of this study and the impacts of human out migration in Galkot municipality are:

- 1.4.1 To assess the pulling and pushing factors of out migration in Galkot Municipality.
- 1.4.2 To analyze the socio-economic and cultural impacts of out-migration in Galkot Municipality.
- 1.4.3 To explore the accelerated the process of out- migration in Galkot Municipality.

1.5 Significance of the Study

The findings of the study have the multifaceted impacts of human out migration. The findings are valuable for:

- 1.5.1 Informing policy interventions that address the potential drawbacks of outmigration while maximizing its benefits for Galkot Municipality.
- 1.5.2 Enhancing the understanding of the complex interactions between socioeconomic and cultural factors in the migration process.
- 1.5.3 Providing a framework for further research on migration dynamics in Nepal and similar settings.

1.6 Limitations of the Study

This study has focused on the impacts of human out migration in Galkot Municipality of Baglung District. The research was focused on the impact of human out migration of Galkot specially focused on Socio-economic and cultural impacts. Municipality, and respondents of survey for primary data collection methods is limited to 55 to 60 relevant people.

CHAPTER II

LITERATURE REVIEW

2.1 Theoretical Overview

Migration is a global phenomenon with significant social, economic, and cultural impacts on sending and receiving communities. Migration is a decision that impacts the welfare of the household, the home community, and in the end the whole economy in various ways. The welfare implications of migration on the origin country are most often, though not always, sizable and positive (Ratha et al., 2011). The main channels through which migration alleviates poverty are increased incomes from remittances, ability to smooth consumption, access to finance for starting a new business, as well as tapping on to the knowledge and resources provided by the international community of the migrant diaspora (Ratha et al., 2011).

2.1.1 Pushing and Pulling Factors Model

Push and pull factors in migration according to Everett S. Lee (1917-2007) are categories that demographers use to analyze human migration from former areas to new host locations. The model divides factors causing migrations into two groups of factors: push and pull. Push factors are things that are unfavorable about the home area that one lives in, and pull factors are things that attract one to another host area (Ng'andu, 2019).

Push factors in Galkot Municipality are often rooted in socioeconomic and environmental challenges prevalent in many rural areas of Nepal. Limited employment opportunities, especially in agriculture, contribute to high levels of poverty and unemployment. Additionally, inadequate infrastructure such as roads, quality health and education facilities, and job opportunities hinder economic development and quality of life (Gautam, 1970). Lack of employment, poor health facilities, educational opportunity and prosper life, including Maoist insurgency, decline in traditional occupations and poverty, further exacerbates living conditions in Galkot Municipality, prompting individuals to seek opportunities elsewhere (Galkot Municipality, 2023).

On the other hand, pull factors attract migrants to destinations offering better prospects for economic advancement and social well-being. Urban centers and more developed regions in Nepal provide access to diverse employment opportunities in industries, services, and the informal sector (Gautam, 2005). Moreover, these areas offer superior educational and healthcare facilities,

which are essential for upward social mobility and improving quality of life (D. Kharel, 2016). The proximity to urban centers also facilitates access to markets, transportation networks, and social amenities, making these destinations attractive for migrants seeking improved livelihoods and opportunities for themselves and their families.

Overall, understanding the interplay between push and pull factors is crucial for comprehensively analyzing the dynamics of migration in Galkot Municipality and formulating effective policies to address the underlying challenges and harness the potential benefits of migration for sustainable development.

2.1.2 Neoclassical Economics Theory

This theory posits that individuals migrate in search of better economic opportunities, higher wages, and improved living standards. Analyzing migration patterns through the lens of neoclassical economics can help identify how economic factors influence migration decisions in Galkot Municipality. Factors such as employment opportunities, income differentials, and cost of living play a crucial role in shaping migration trends (Goodland & Ledec, 1987).

2.1.3 Social Network Theory

Network theory suggests that social networks and connections play a significant role in facilitating migration. People often migrate to locations where they have family members, friends, or acquaintances who can provide support, information, and assistance during the migration process. Examining the role of social networks and kinship ties in Galkot Municipality can shed light on how migration flows are influenced by existing social connections (Merchant, 2012).

2.2 Review of Previous Studies

This literature review explores the various impacts of migration in Galkot Municipality of Baglung, Nepal. The review has examined both pulling and pushing factors that influence out-migration, analyze the socio-economic and cultural impacts on the remaining population, and investigate how migration has evolved over time.

2.2.1 Evolution of Migration

Shrestha (1985) in his article “The political economy of economic underdevelopment and external migration in Nepal” analyze the roots of underdevelopment and external migration in Nepal and

highlights the role of internal institutional policies and British India's Gorkha recruitment policy in perpetuating underdevelopment and migration in Nepal.

The first Gorkha recruitment for migration from Nepal started in the late 19th century when British India initiated a massive drive to recruit Nepalese youths for its imperial army. This recruitment policy led to a systematic and sustained process of external migration from Nepal, as many Nepalese individuals were recruited and migrated to serve in the British army. The exact year or specific details about the initiation of the first Gorkha recruitment as migration are not mentioned in the provided sources. The paper provides a political-economic analysis of the roots of underdevelopment and external migration in Nepal. It highlights the role of internal institutional policies and British India's Gorkha recruitment policy in perpetuating underdevelopment and migration in Nepal.

The study emphasizes that Nepal's economy is trapped in a negative feedback cycle, where underdevelopment fuels outmigration, which in turn propagates underdevelopment. Migration from the hills has emerged as a major economic activity for the survival of many migrant households, contributing to the development of industries in neighboring provinces of India.

2.2.3 Pulling and Pushing Factors

Several studies have explored the factors driving migration from rural areas to urban centers. Education is a frequently cited pulling factor, with individuals seeking better educational opportunities in cities (Khatiwada, 2010). The paper explores international migration rates and drivers in Nepal, focusing on the social, demographic, economic, environmental, and political factors that influence migration decisions. He highlighted the importance of authentic data in calculating migration rates and discusses the push and pull factors that contribute to migration, such as disasters, conflicts, and the pursuit of better economic opportunities. Nepal is a significant labor-sending country, with remittances from migrant workers contributing to about one-third of the economy.

Khatiwada (2010) emphasized that regardless of the drivers, Nepali people migrate to access improved economic and employment opportunities. He was insisting that the rise in student migration is recognized as a significant attraction that policymakers are focusing on. This movement has led to an elevation in the social status of migrants within their home communities, as they receive better treatment from individuals belonging to higher castes and classes. This shift

can be attributed to the financial resource's migrants acquire abroad, which enable them to purchase land and enhance their socioeconomic standing.

Gautam (2005) in his article "International Migration in Nepal: Rates, Drivers and Impacts" analyzes international migration rates and drivers in Nepal, using secondary sources of data. He tried to explore various drivers of migration, including social, demographic, economic, environmental, and political factors. He highlighted the push factors, such as disasters and conflicts, and the pull factors, such as growing student migration, that have drawn the attention of policymakers. Nepal is one of the labor-sending countries to Malaysia and Gulf countries, and remittances from migrant workers contribute significantly to the country's economy. He also discusses the challenges and vulnerabilities faced by Nepali migrants, including abuses faced by female domestic workers, risks of human trafficking, and the lack of social protection in host countries. The impacts of migration are analyzed, and it is concluded that Nepali people migrate to access improved economic and employment opportunities, regardless of the specific drivers.

Gautam (2005) in the paper utilizes secondary sources of data to analyze international migration rates and drivers in Nepal. The calculation of migration rates is based on the 2011 population census data, as the official rates of migration by the National Statistical Office for the 2021 census are still in planning. The paper also references the concept introduced by the Population Reference Bureau (PRB) in 2006 for calculating immigration and emigration rates, but it does not specify the exact sources of data used. The analysis of migration drivers and impacts is based on the secondary sources available. The paper draws on various reports and studies to highlight the social, demographic, economic, environmental, and political factors influencing migration decisions. The vulnerabilities and challenges faced by Nepali migrants are discussed, including abuses faced by female domestic workers and the risks of human trafficking.

Gautam (2005) relies on secondary sources of data, which may have limitations in terms of accuracy and reliability. The calculation of migration rates is based on the 2011 population census data, as the official rates for the 2021 census are not available. This may not reflect the current migration trends accurately. The paper does not provide specific details about the sources of data used for analyzing migration drivers and impacts. This lack of transparency may raise questions about the validity of the findings.

The paper focuses primarily on international migration rates and drivers, and may not provide a comprehensive analysis of all factors influencing migration in Nepal. Other factors, such as

cultural and social factors, may also play a role in migration decisions but are not extensively discussed. The paper does not discuss the methodology used for analyzing the impacts of migration, which may limit the understanding of the long-term outcomes of migration in Nepal.

Hatlebakk (2010) found that income poverty and land inequality were high in Maoist-controlled districts in Nepal. However, income inequality was not found to be a significant factor in Maoist influence. The study also found that landlessness was negatively correlated with Maoist influence when outliers were excluded from the analysis. The study did not find a significant effect of average income level on Maoist control. The study used economic variables as independent variables and found that a higher income at the 25th percentile compared to the 75th percentile was associated with a higher likelihood of Maoist influence. The study also found that districts with high displacement had less income inequality. The study applied a consistent set of independent variables based on data from the Nepal Living Standards Survey (NLSS).

Lawoti (2009) analyzed the dynamics and growth of a violent communist rebellion initiated by the Communist Party of Nepal (Maoist) - CPN(M) in Nepal in the 21st century. The insurgency in Nepal grew after the end of the Cold War, in contrast to the decline of other radical communist movements in most parts of the world. Author explores various factors that contributed to the growth of the insurgency, including the organization, agency, ideology, and strategies employed by the rebels and the state.

He also analyzes the consequences of the insurgency and delves into new issues such as the role of the Maoist student organization, Maoist's cultural troupes, and the organization and strategies of the People's Army and the Royal Nepal Army.

Sharma (2022) examines the impact of climate change on agriculture in Baglung Municipality, Nepal. The research analyzes the agriculture pattern in the study area and identifies the pattern of rainfall and temperature. The study investigates the impact of climate change on agriculture, including variables such as income, job diversion, food scarcity, and natural disasters. The collected data are analyzed and interpreted to understand the specific impacts of climate change on agriculture in Baglung Municipality.

The study concludes that climate change has a significant impact on agriculture in Baglung Municipality, Nepal. The research findings indicate that there is a negative correlation between rainfall and agricultural productivity in the district, suggesting that increased rainfall leads to decreased productivity. The study highlights the challenges faced by farmers in the study area,

including changes in income, job diversion, food scarcity, and vulnerability to natural disasters, all of which are attributed to climate change. The research emphasizes the need for adaptation strategies and policies to mitigate the adverse effects of climate change on agriculture in Baglung Municipality.

Overall, the paper underscores the urgent need for measures to address the impact of climate change on agriculture in Baglung Municipality, Nepal, and suggests the importance of implementing adaptation strategies to ensure the resilience and sustainability of the agricultural sector. The paper provides insights into the specific impacts of climate change on agriculture in Baglung Municipality, Nepal, including changes in income, job diversion, food scarcity, and vulnerability to natural disasters. The research findings contribute to the understanding of the challenges faced by the agricultural sector in the context of climate change.

2.2.4 Socio-Economic and Cultural Impacts

Migration can have a profound impact on the socio-economic and cultural fabric of sending communities (Ratha et al., 2011). The paper provides a review of the literature on the development impact of migration and remittances on origin countries and destination countries in the South. It discusses the positive effects of migration and remittances, such as increased incomes, poverty reduction, improved health and education outcomes, and economic development. However, it also highlights the potential social costs to migrants and their families. Additionally, it addresses the challenges faced by developing countries in integrating immigrants, job competition between migrants and native workers, and fiscal costs associated with providing social services to migrants.

Paudel (2022) claimed that the remittances have been a crucial component in the lives of Nepali people since the beginning of the 18th century. Remittances gained attention from scholars and policymakers towards the end of the century. Remittances have become linked to the global financial inclusion agenda, known as the 'financialization of remittances'. The paper proposes a temporal and spatial shift to explore the historical antecedents of the financialization of remittances and focuses on the context of rural Nepal. The study investigates the role of remittances in the reconfiguration of rural finance and social hierarchies.

The author highlighted the transformative power of remittances in (re)negotiating debt relations, emancipating from debt relations, and reconfiguring social hierarchies. The study also emphasizes the colonial legacies of remittances that prepared the ground for introducing formal financial infrastructure in rural areas, which is fundamental to contemporary financialization.

Paudel (2022) reveals the transformative power of remittances in rural Nepal, including the (re)negotiation of debt relations, emancipation from debt relations, and the reconfiguration of social hierarchies. Remittances contribute to a reconfiguration of social power, challenging the domination of certain castes and rural elites, and re-stratifying financial and social hierarchies. The analysis highlights the colonial legacies of remittances in Nepal, which prepared the ground for the introduction of formal financial infrastructure in rural areas, a fundamental aspect of contemporary financialization.

The study also emphasizes the role of remittances in the reconfiguration of rural finance and social hierarchies in Nepal, with a focus on the context of rural Nepal.

The findings suggest that remittances have played a significant role in shaping the financial and social landscape of rural Nepal, challenging existing power structures and contributing to social and economic changes.

Ratha et al (2011) touches upon the impacts of migration on climate change, democratic values, demographics, national identity, and security. It concludes with policy recommendations, including better integration of migration in development policies, improved data collection on migration and remittance flows, leveraging remittances for access to finance, improving recruitment mechanisms, and facilitating safe and legal international labor. The economic impacts of migration are complex. While remittances sent back by migrants can improve the economic status of some households, the overall productivity of the sending community can decline due to a lack of manpower.

Ratha et al(2011) in his paper provides a comprehensive analysis of existing studies and research on the development impact of migration and remittances on origin and destination countries in the South. The methodology involves reviewing and synthesizing the findings and conclusions from a range of sources, including academic papers, reports, and other relevant literature on the topic. The review examines the various dimensions of migration and remittances, such as their effects on income, poverty reduction, health, education, and economic development, as well as their potential social costs and challenges faced by both sending and receiving countries.

Kharel (2016) explores the causes and patterns of migration from the village of Malma in the Western Hills of Nepal to Japan, specifically focusing on Nepali migrants working as cooks in Nepali restaurants in Japan. It discusses how social capital has played a significant role in facilitating this migration and providing opportunities for upward mobility for many families in

Malma The research conducted from 2008 to 2015 in Japan and Nepal sheds light on the transnational ties between the Nepali migrants and their homeland. It highlights the economic opportunities that have emerged in Malma since 1990 and how migration to Japan is seen as the primary means of upward social mobility in the village.

The article also acknowledges the challenges and inequalities that exist within these social networks, particularly the status gap between the owner/manager and cook in Nepali restaurants in Japan. It emphasizes that while migration offers opportunities for upward mobility, it does not necessarily solve the underlying inequalities. Additionally, the paper mentions that there are already more than 3,000 Nepali restaurants and over 55,000 Nepali migrants in Japan, making it the largest South Asian community in the country (Kharel et al., 2021). While the paper focuses on migration from Malma to Japan, it is worth noting that Nepali migrants in Japan also include students, trainees, professors, doctors, and company workers, with Tokyo having the largest concentration of Nepali immigrants.

Kharel (2016) in his article, defined social capital as the resources available to individuals or groups through their social networks, plays a crucial role in facilitating migration processes. Social networks offer various resources such as funds, goods, and information, which can be accessed by migrants through their network connections. Social capital provides opportunities for migrants to access support, assistance, and guidance from their community members, which can help them navigate the challenges of migration. Migrants can benefit from the socialization of norms and customs within their community, which influences their behavior and actions in ways that facilitate migration. Trust and reciprocity within social networks enable migrants to exchange information, resources, and support, reducing the costs and risks associated with migration. Social capital also plays a role in providing migrants with a sense of belonging, identity, and solidarity, which can contribute to their overall well-being and integration in the destination country. However, it is important to note that social capital can also contribute to inequalities within migration networks, as individuals with greater capacities to mobilize social capital may have advantages over others. Social capital acts as a valuable resource for migrants, providing them with support, information, and opportunities that facilitate their migration journey and integration in the destination country.

Dhami (2023) in his paper titled "Distribution of Remittance in Malma Village of Galkot Municipality, Baglung" aims to analyze the distribution of remittance at household and social levels and assess the educational and professional status of the remitters. The authors conducted

a sample survey in 2022 in Galkot Municipality Ward No Response to gather data on the local shop business patterns of households' members of migrants and the savings patterns of households' members of our migrants.

Dhami also examines the working sectors of the migrant population, including construction, sales, hotel/restaurant, security guard, technical, and others. The research findings provide insights into the distribution of remittance income in different sectors within remittance-receiving households. The paper provides insights into the distribution of remittance at household and social levels in Malma Village of Galkot Municipality, Baglung It assesses the educational and professional status of the remitters and examines the working sectors of the migrant population, including construction, sales, hotel/restaurant, security guard, technical, and others.

Author Dhami analyzes the savings patterns of households' members of our migrants and the impact of remittance income on the economic and social well-being of the households. It explores the socio-economic status of the remittance-receiving households and their access to purchasing capacity, education, and economy. The research findings contribute to understanding the role of remittance in reducing poverty, promoting entrepreneurship development, and achieving economic and social benefits in the study area.

The research study is limited to a specific village (Malma Village) within the Galkot Municipality, which may not be representative of the entire municipality or other regions. The sample size for the study was relatively small, with data gathered from only 156 respondents, which may limit the generalizability of the findings. The paper does not provide a comprehensive literature review, which could have provided a broader context and theoretical framework for the study.

The study relies on self-reported data, which may be subject to recall bias or social desirability bias. The paper does not discuss the limitations of the research methodology or potential sources of bias in data collection, which could affect the validity and reliability of the findings.

2.3 Research Gap of the Review

After reviewing recent and relevance literature there is found some research gaps, based on the research design and the existing literature. Limited Scope of Pulling Factors pulling factors (education, employment, health facilities, security, accessibility, comfortable life) offer a good starting point has been discussed however following points are to be considered. Family reunification desire to join family members who have already migrated. Lifestyle aspirations

migration driven by a desire for a more urban lifestyle. Environmental factors like resource scarcity or natural disasters pushing people to migrate.

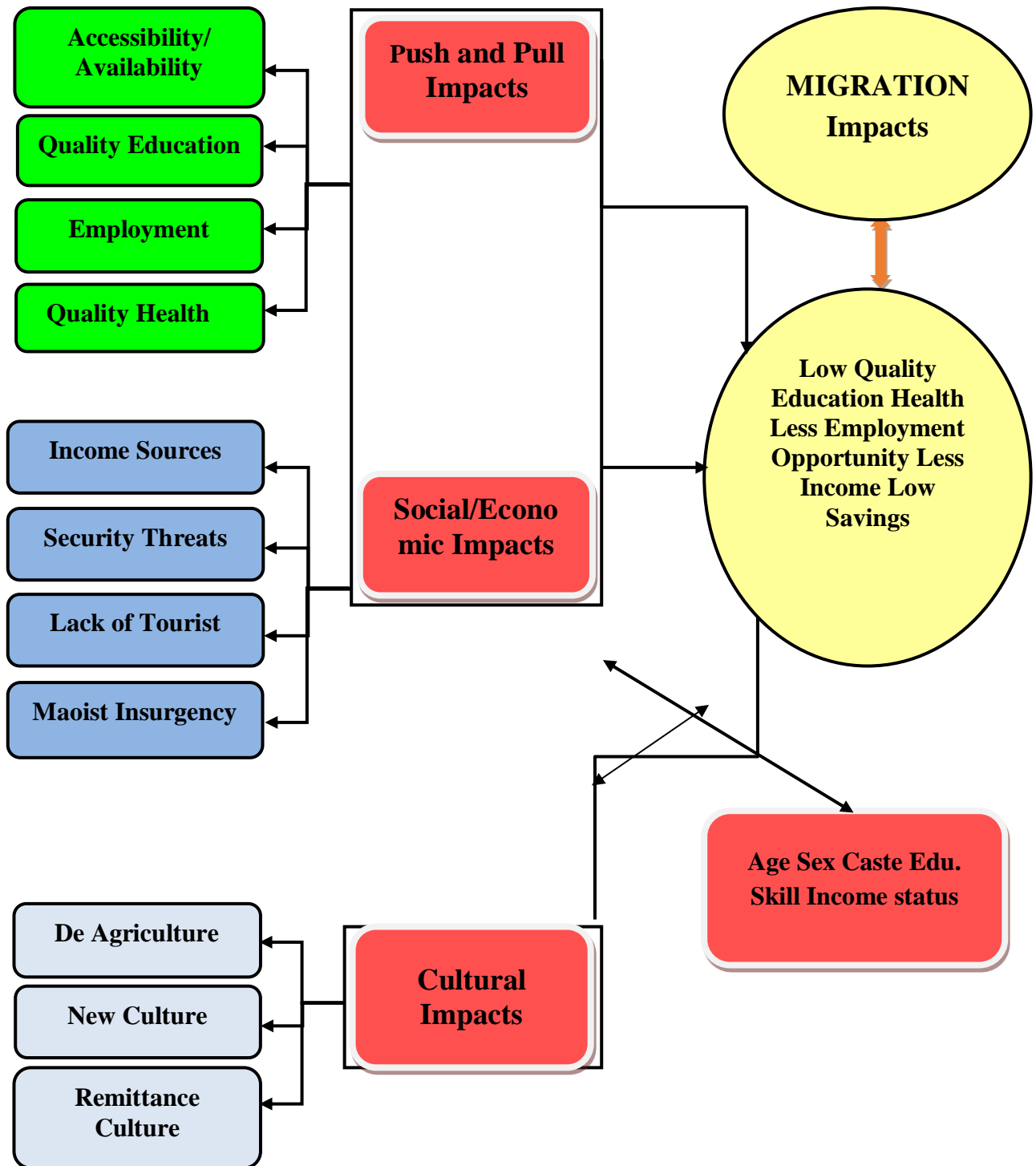
2.3.1 Socioeconomic and cultural Understanding the pre-migration income levels can provide better context to the economic impacts. Capturing information on remittances sent back by migrants can be crucial to analyzing the economic impact on the sending community. How cultural impacts lead to migration but lacks details on how to capture the information. Certain cultural practices are perceived as hindrances to progress, prompting migration that affects the cultural identity of both migrants and the sending community.

2.3.2 Policy Implications How the policy decisions to address the root causes of out-migration and potentially encourage return migration if that's a desired outcome.

2.4 Conceptual Framework of the study

Figure 6

Conceptual framework of Impacts of Human Migration in Galkot Municipality, Baglung



Source: Created by researcher ,2024

This conceptual framework shown in the (Figure-6) illustrates the relationship between migration (independent variable), Moderating variables and its impacts on Galkot Municipality (dependent variable). It also considers the pulling and pushing factors that influence migration decisions, and moderating variables that can affect the way these factors influence migration decisions and outcomes.

a) Independent Variables

i) Pulling Factors

- Education
- Employment
- Health facilities
- Security
- Accessibility
- Comfortable life

ii) Pushing Factors

- Traditional profession decline
- Occupation limitations
- Insufficient income sources
- Security threats (including Maoist insurgency)
- Lack of employment

b) Moderating Variables

i) Demographics (age, sex, caste, religion)

ii) Socioeconomic status (land ownership, education level, occupation)

c) Dependent Variable (Impacts of Migration)

- School closures
- Police dysfunction
- Economic decline
- Changes in social and cultural life
- Decline in agricultural productivity

d) Relationships between Variables

d a) Pulling Factors and Migration Decision: People are more likely to migrate if they are attracted to better opportunities for education, employment, healthcare, security, accessibility, and a comfortable life in other locations. **Pushing Factors and Migration Decision:** People are more likely to migrate if they are driven away by factors such as a decline in traditional professions, limited job opportunities, insufficient income sources, security threats, and lack of tourism in their home town.

d b) Moderating Variables: The effects of migration on both the decision to migrate and the resulting impacts can be moderated by demographics (age, sex, caste, religion) and socioeconomic status (land ownership, education level, occupation). For example, younger people with higher education levels may be more likely to migrate for better education or employment opportunities, while older people or those with lower socioeconomic status may be more tied to their land and community.

d c) Migration Decision and Impacts: The decision to migrate can have a cascading effect on various aspects of life in Galkot. Out-migration can lead to school closures, police dysfunction, economic decline, changes in social and cultural life, and a decline in agricultural productivity.

CHAPTER III

RESEARCH METHODOLOGY

3.1 Research Design

This study employed a mixed-method model, utilizing both quantitative and qualitative data collection methods. The quantitative component involved a survey with semi structured closed and closed-ended questions to gather data on demographics, socio-economic factors, security perceptions, and migration experiences. The survey has targeted a representative sample of the Galkot population (at least 6 respondents for each Ward). The qualitative component involved focused group discussions with three age groups (20-30, 30-50 and 50-70 years) and Key Informant Interviews (KIIs) to gain deeper insights into the history, driving factors, migration trend and consequences of migration. The discussions and interviews exploring topics such as pulling and pushing factors, social economic, cultural impacts, and the evolution of migration patterns.

3.2 Area of Study

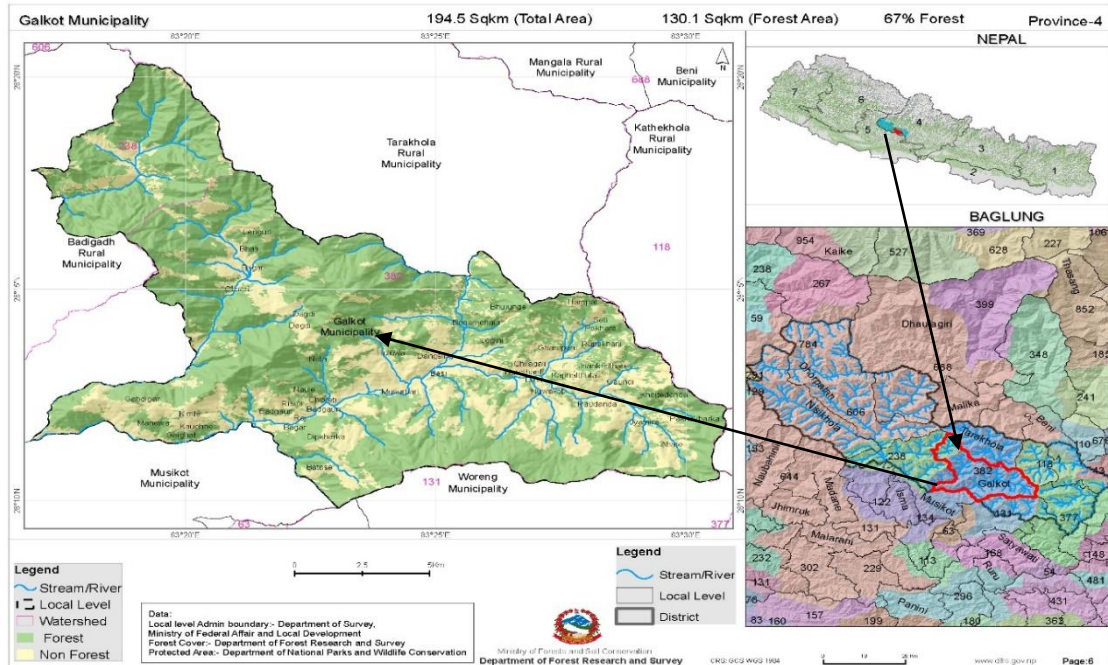
This research was conducted in the Galkot municipality which is located about 45 km north west from Baglung municipality Bazar and about south west from 325 km from Kathmandu. Geographically the municipality (Fig-7) is located at latitude 28° 11' 60" and longitude at 83° 25' 0.0012" of Baglung district of Nepal (Galkot, 2024).

The total area of the Galkot Municipality is 194.39 km² (75.1 sq m) and according to Census Nepal 2011, the total population of the municipality is 30,588 individuals. The density of this municipality is 170.30/km² (441/sq mi). This municipality has divided into 11 Wards. (Nepalidata, 2024). Researcher spent seven days during the data collection in the area of study.

The Galkot Municipality has average temperature ranges from highest 16.45°C to lowest 5 °C. Galkot, typically receives about 258.33 millimeters (10.17 inches) of precipitation and has 202.07 rainy days (55.36% of the time) annually (Nepalidata, 2024).

Figure 7

Location map of the Galkot municipality in Baglung District, Nepal



Source: <https://nepalindata.com/resource/>,2024

3.3 Source of Data

The relevant and recent data was collected through primary and secondary sources using both qualitative and quantitative methods by using various tools and techniques during the study.

3.4 Techniques and Tools of Data Collection

This descriptive and explorative method and technique involved the collection and analysis of quantitative data and model followed by the theme and pattern analysis of qualitative data and interpretations techniques. The priority is given to the qualitative data and the findings are integrated during the interpretation stage.

3.4.1 Key Informant Interview (KII)

Key informants were the person who have better understanding about the causes problems impacts and other important information related to migration. For this study key informants were interviewed (Mayor, Vice Mayor, some Ward Presidents and few Head Masters were taken as KII of Galkot Municipality).

3.4.2 Focused Group Discussions (FGD)

Focus group discussion is used as a qualitative approach to gain an in-depth understanding of impacts and causes of migration in society. The method aims to obtain data from a purposely selected group of individuals rather than from a statistically representative sample of a broader population. FGD (details of participants of FGD is shown in Appendix “B”) was conducted in municipality where 21 participants were presented their view on the causes and impacts of migration in Galkot municipality

3.4.2 Survey questionnaire

Survey of a questionnaires (google form) was designed to gather data from a target audience. It has included 55 to 60 respondents for semi structured open and closed ended questions. Google forms were sent through their personal email and direct to their cell phones too, in order to increase the effectiveness of survey. Respondents were from Galkot Municipality and migrants in abroad originally from Galkot Municipality. Target respondents have filled their forms and sent either by email or using any other means of social networks (details of survey questionnaire are shown in the Appendix “A”)

3.5 Ethical Consideration

This research ensured informed consent, confidentiality of data, and respectful treatment of participants during surveys, focus groups discussion, and interviews and followed APA7th edition format. Sensitive topics like security threats was handled with care. Anonymity is preserved through data coding. The research aims to contribute to the well-being of the Galkot community by understanding migration patterns and their impacts.

CHAPTER IV

FINDINGS AND DISCUSSIONS

4.1 Demographic trend of Migrants

According to the 2021 National Census, out of the 30,588 population of 7,714 households in Galkot Municipality, 5,086 youths from 3,270 (42 percent) households are currently employed abroad. Out of those who went for foreign employment, 651 youths from 587 households have returned home. Looking at the overall data, 5,086 youths from this municipality are working in foreign employment.

The presence of 154 individuals under 18 years old and 88 individuals aged 18 to 20 years in foreign employment suggests a concerning trend of youth migration from Galkot Municipality. Young people migrating for work may face various challenges related to exploitation, abuse, and limited access to education and social support. Understanding the factors driving youth migration and addressing the vulnerabilities of young migrants is crucial for ensuring their well-being and future prospects.

The majority of foreign workers (1839 individuals in the 21-30 age group and 2029 individuals in the 31-40 age group, Table-2) fall within the prime working age range. This indicates that a significant proportion of the working-age population in Galkot Municipality is engaged in foreign employment, potentially leaving behind gaps in the local labor market and impacting community dynamics. Exploring the reasons behind the migration of individuals in this age group, such as economic opportunities, lack of employment options locally, and aspirations for a better future, is essential for understanding the implications of migration on the sending community.

Table-2 provides the participation of individuals in the middle-aged and older age groups in foreign employment, with 760 individuals aged 41-50 years and 216 individuals above 51 years old. Migration in these age groups may be driven by factors such as economic necessity, limited retirement options, and the desire to support families financially.

However, older migrants may face challenges related to health, adaptability, and social integration in destination countries. Exploring the experiences and outcomes of middle-aged and older migrants can provide insights into the long-term impacts of migration on individuals and families in Galkot Municipality.

Table 2*Foreign Employment by Age group from Galkot municipality*

<18 years	18 - 20 years	21-30 years	31-40 years	41-50 years	51Above	Total
154	88	1839	2029	760	216	5086
3.73%%	1.73%	36.15%	39.89%	14.94%	4.24%	100%

Source: Galkot Municipality foreign employment poster, 2080

The data underscores the significant role of foreign employment in shaping demographic and socioeconomic dynamics in Galkot Municipality. While migration offers opportunities for economic advancement and remittance income, it also poses challenges such as brain drain, social fragmentation, and dependency on migrant remittances.

Investigating the impacts of migration across different age groups, including its effects on families, communities, and local development, is essential for understanding the multifaceted nature of migration and formulating targeted interventions to address its implications.

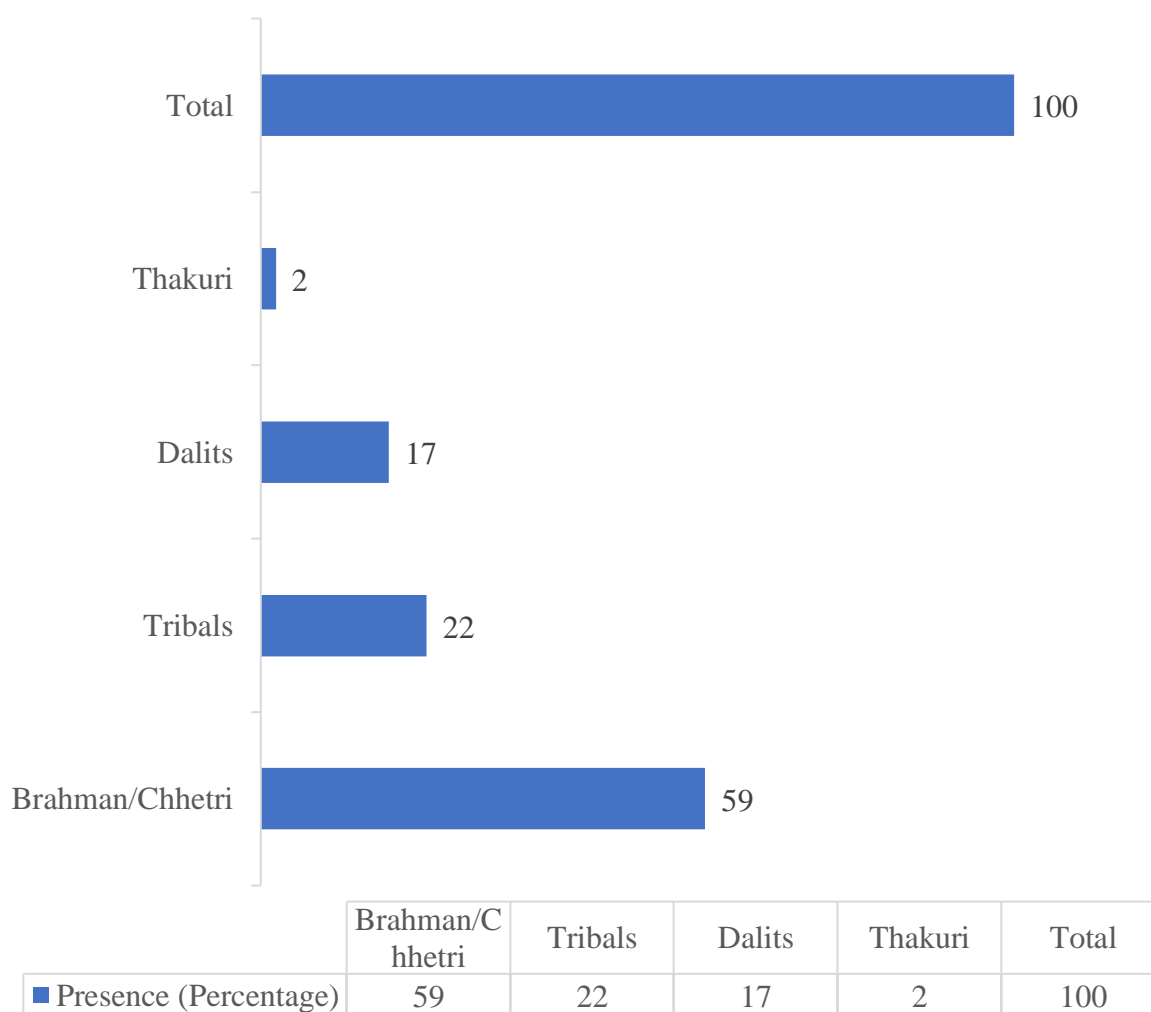
Out of the total number of foreign workers, 22 percent are women. Most of the youths from these communities have gone for foreign employment as there is majority of Brahmin community, tribal community and Dalit community living in the municipality. Among the households involved in foreign employment, 59 percent belong to Brahmin Chhetri is shown Caste composition made of local community of Galkot Municipality (figure-8).

Caste composition made of local community of Galkot Municipality the (figure-8) shows the demographic profile indicates a diverse community composition with 17 percent Kshetri, 17 percent Dalits, 22 percent tribals, and 2 percent Thakuri and other communities, reflecting significant ethnic diversity. Additionally, a substantial 76 percent of the population falls within the age group of 21 to 40 years, suggesting a predominantly young and potentially economically

active populace. This age distribution highlights a youthful demographic, which can drive economic growth and social dynamism, provided there are adequate opportunities for employment, education, and skill development.

Figure 8

Caste composition made of local community of Galkot Municipality



Source: Galkot Municipality foreign employment poster, 2080

4.1.1 Migration Patterns

Table-3 gives a picture of the foreign employment destinations of the Galkot community and the corresponding number in respective countries. The highest number of employed youths among those with work permits are 46 percent in Japan. Similarly, UAE, Qatar, India and Europe each

has 6 percent Saudi and Malasia each has 4 percent, Australia and Portugal each has 3 percent foreign employment from Galkot Municipality. Similarly, Kuwait, S Korea and USA each has 2 percent India and Europe has 6 percent and others various countries have 10 percentage of forrign employment from the Galkot Municipality itself.

It has been found that the number of young people who go for skill training while going for foreign employment is very low. Analyzing the overall number of foreign workers, it has been found that about 53 percent of the youth went abroad without any skill training. As a result, they are not able to get the desired benefits in the destination country and they are facing various kinds of risks and difficulties including accidents at the workplace.

Similarly, the number of dependents is about 18 percent. As the local youth do not have direct access to the manpower company and the information about the demands and needs of the international labor market does not reach the remote settlements, there is a dire situation where they have to depend on middlemen (local agents).

Table 3

Most foreign employment destination by country in Galkot Municipality

Destination Country	Percentage
Japan	46
UAE	6
Quatar	6
Saudi	4
Malasia	4
Australia	3
Portugal	3
Kuwait	2
S Korea	2
USA	2
India	6
Europe	6
Misc	10
Total	100

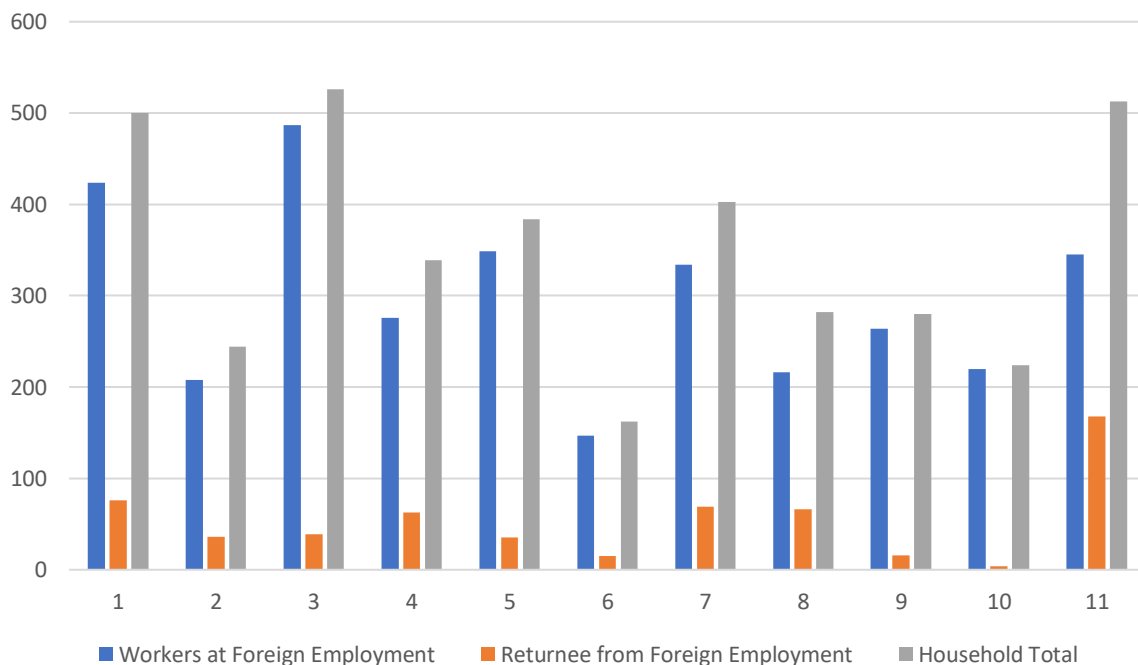
Source: Galkot Municipality foreign employment poster, 2080

The Figure- 9 provides the data that highlights significant disparities in foreign employment and returnee patterns across the 11 wards. Ward 3 has the highest number of workers abroad (487) and households (526), suggesting a strong dependence on foreign employment. In contrast, Ward 6 has the fewest workers abroad (147) and households (162), indicating potentially fewer opportunities or less reliance on migration. Ward 11, notable for its high number of returnees (168), reflects a strong returnee presence, hinting at successful reintegration programs or robust support networks.

Ward 1 has an 84.8% ratio of workers abroad to households, signifying heavy reliance on remittances, which can boost local economies but also pose challenges like labor shortages. The 32.7% returnee ratio in Ward 11 suggests effective reintegration, likely contributing to local development. These disparities indicate that policies should be tailored to address specific needs, such as supporting wards with high migration through vocational training and creating local job opportunities to balance the economic impact of foreign employment.

Figure 9

Current status of returnees by ward in Galkot Municipality



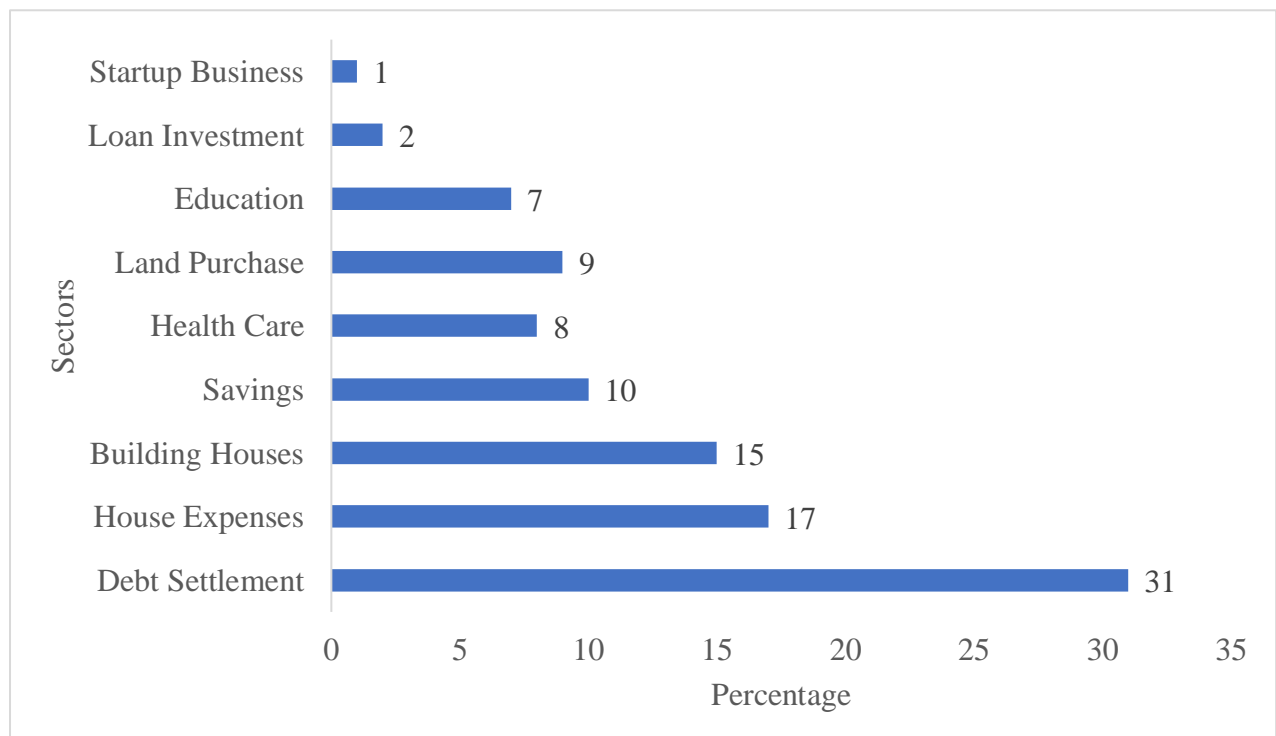
Source: Galkot Municipality foreign employment poster 2080

The Figure-10 presents a detailed breakdown of how households allocate funds across various sectors, highlighting their financial priorities and socio-economic conditions. However, there is a lack of institutionally planned efforts for the proper management of large-scale remittances coming into the municipality and their mobilization in the productive sector. A large part of the received remittances, about 31 percent of the amount, is used to repay the debt. Similarly, it has been found that 17 percent is spent on house expenses, 15 percent on house building, 10 percent on savings, 8 percent on health care, 9 percent on land purchase, 7 percent on education, 2 percent on loan investment and 1 percent on starting a new business.

Looking at the data, only a small part of the remittance is being used for business start-up and promotion. Therefore, it is necessary for the local government to analyze the local resources, production area and market for the deployment of remittances in the productive sector and create and implement a fact-based plan with the participation of relevant stakeholders.

Figure-10

Received remittances spent in various sectors in Galkot



Source: Galkot Municipality foreign employment poster ,2080

4.2 Pulling factors for human migration

There are some important pulling factors which has attracted the residents of Galkot to others cities inside or the outside of the country.

4.2.1 Education

One significant pulling factor influencing migration patterns in Galkot Municipality is access to education. The presence of educational institutions, including schools and colleges, may attract individuals and families seeking better educational opportunities for themselves and their children. As education is often seen as a pathway to socio-economic advancement, migrants may be drawn to areas with better educational facilities.

4.2.2 Employment

Economic opportunities, including employment prospects, serve as strong pulling factors for migration. Galkot Municipality may offer job opportunities in various sectors such as agriculture, tourism, or local businesses. Migrants may be motivated to move to the area in search of employment that provides better wages and livelihood opportunities compared to their places of origin.

4.2.3 Health Facilities

Access to healthcare services is another crucial factor influencing migration decisions. Galkot Municipality may provide better healthcare facilities, including hospitals, clinics, and medical professionals, attracting individuals seeking improved healthcare access for themselves and their families. The availability of quality healthcare services can significantly impact migrants' overall well-being and quality of life.

4.2.4 Accessibility

Geographical factors such as transportation infrastructure and connectivity can influence migration patterns. Galkot Municipality's accessibility, whether through well-maintained roads, public transportation, or proximity to urban centers, can make it an attractive destination for migrants looking for ease of travel and connectivity to other regions.

4.2.5 Comfortable Life

Quality of life factors, including housing, amenities, and community infrastructure, contribute to the attractiveness of Galkot Municipality as a migration destination. The availability of basic necessities, comfortable living conditions, and a supportive community environment can entice individuals and families to relocate to the area in pursuit of a better quality of life.

4.3 Pushing Factors for human migration

There are some pushing factors which lead people to migrate from their community that may either any social, political, economic or any others reasons in society of Galkot

4.3.1 Traditional Profession Decline

Traditional livelihoods or professions that depend in subsistence agriculture decline in viability, pushing individuals to seek alternative means of livelihood elsewhere. People from Khas village of Ward no 6 where Dalits were the majority of the residence are now leaving the place in search of new job worldwide. Changes in agricultural practices, environmental degradation, or shifts in market demand may lead to the abandonment of traditional occupations, prompting migration to seek new economic opportunities.

4.3.2 Occupation Limitations

Limited employment opportunities or occupational constraints in the places of origin may push individuals to migrate in search of better prospects. Factors such as lack of job diversity, low wages, or limited career advancement opportunities can compel individuals to seek alternative employment options in areas like Galkot Municipality.

4.3.4 Maoist Insurgency

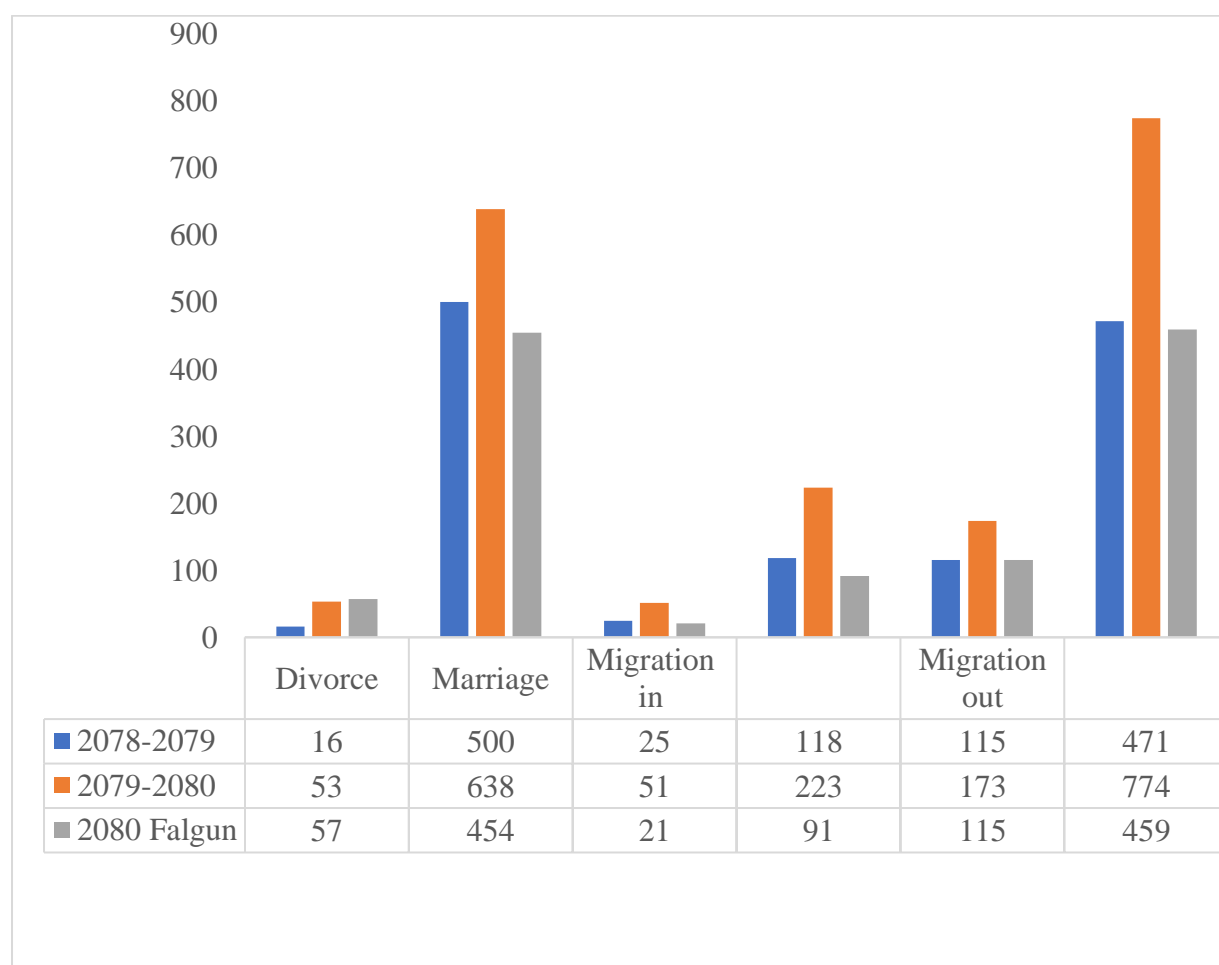
During the Maoist insurgency security threats, including political unrest, armed conflict, or insurgency, created an environment of fear and insecurity, prompting people to internal migrate to safer areas. The Maoist insurgency in Nepal, for example, have displaced individuals and families from conflict-affected regions, leading them to seek refuge and safety in places like Galkot Municipality. Understanding the interplay between these pulling and pushing factors is essential for comprehensively analyzing the impacts of human migration on Galkot Municipality and its community dynamics.

4.3.5 Social Factors

The figure-11 shows a increase in the number of divorces over the three-year period. In the year 2078-2079, there were 16 divorces recorded, which increased to 53 divorces in 2079-2080, and further rose to 57 divorces in the year 2080 Falgun. This upward trend in divorce rates suggests changing social dynamics and attitudes towards marriage and family life within the community. Social reproduction of migration is being a vibrant pushing factor for migration. Every household has at least one or two members abroad that motivated for foreign employment in community Analyzing the factors contributing to the rise in divorces emerging culture of foreign employment, such as economic stress, social pressures, and legal reforms, can provide insights into the challenges faced by married couples and the implications for family stability and well-being.

Figure 11

Social Impacts due to the social institutions in Galkot Municipality



Source: Galkot Municipality foreign employment poster ,2080

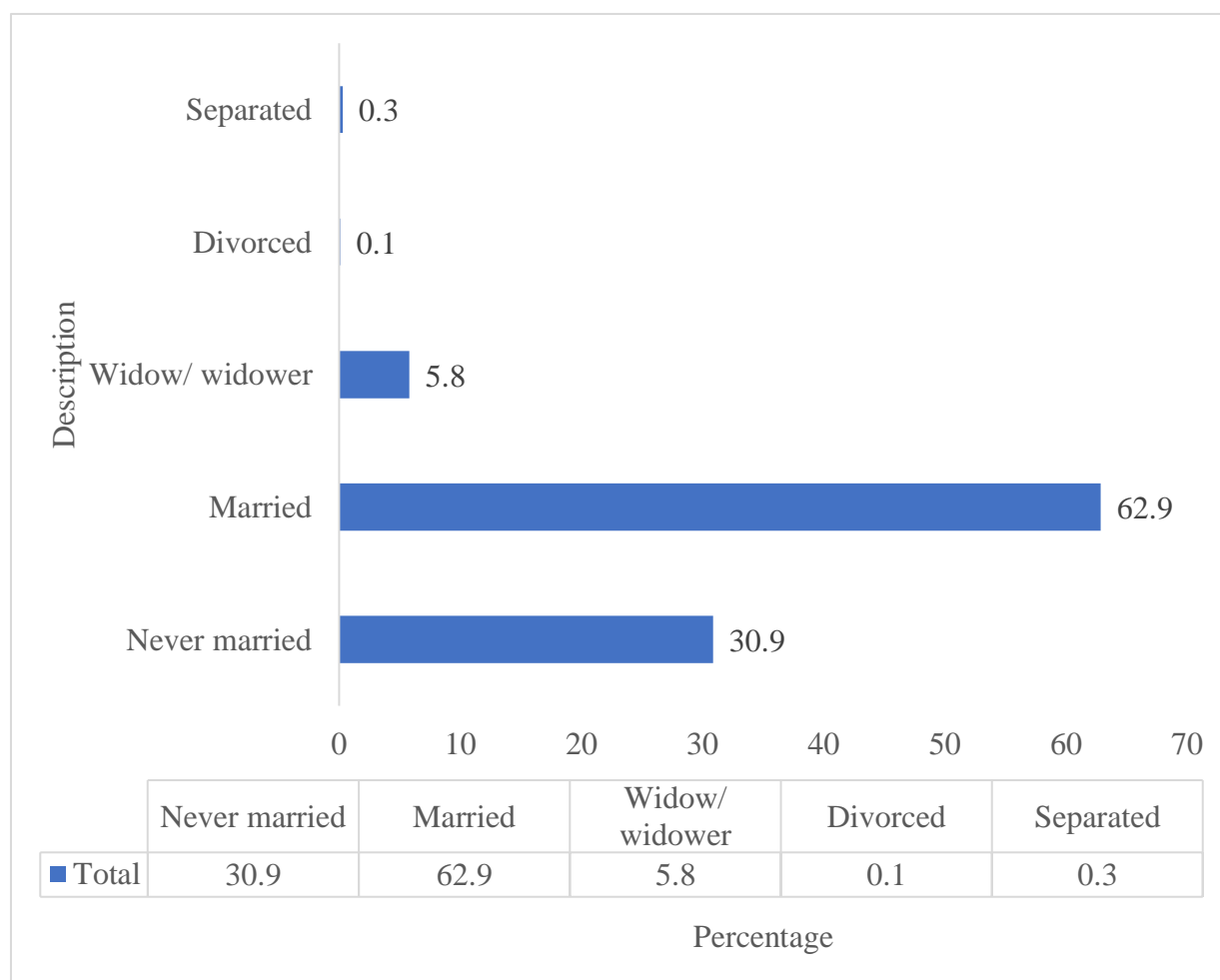
Alongside the increase in divorces, the data also indicates fluctuations in the number of marriages over the three-year period. While there were 500 marriages registered in 2078-2079, this number slightly increased to 638 marriages in 2079-2080 before decreasing to 454 marriages in the year 2080 Falgun. These variations in marriage rates may reflect changing demographic trends, cultural norms, and socioeconomic conditions influencing marriage decisions within the community. Understanding the factors driving marriage patterns can shed light on the dynamics of romantic relationships, family formation, and social integration in Galkot Municipality.

Figure-12 also provides insights into migration patterns, both inward and outward, during the study period. The number of individuals migrating into Galkot Municipality fluctuated, with 118 persons registered in 2078-2079, 223 persons in 2079-2080, and 91 persons in the year 2080 Falgun. Similarly, the number of individuals migrating out of Galkot Municipality also varied, with 115 persons in 2078-2079, 173 persons in 2079-2080, and 115 persons in the year 2080 Falgun.

These migration trends may be influenced by factors such as employment opportunities, educational pursuits, family reunification, and environmental considerations. Analyzing the impacts of migration on the sending and receiving communities, including changes in demographics, social cohesion, and economic development, is essential for understanding the broader social implications of migration in Galkot Municipality.

Apart from that, the problems of not being allowed to return to the country by the company owner, not getting food and salary facilities were also found during data collection. On the other hand, it has been reported that in their absence, the workload of the family members is increasing due to family management, social work and professional responsibilities. Children are not getting proper care and senior citizens are not getting the necessary support. It has also been found that the senior citizens of some families are becoming helpless.

Generally speaking, due to foreign employment, it seems that various types of problems are being created in individuals, families and society. When development priorities are focused on the field of physical development, such family and social problems are getting overshadowed. If such problems can be addressed in time, a prosperous society can be built and the development process can proceed smoothly.

Figure 12*Current Marital Status of municipality*

4.4 Child birth rate in Galkot Municipality

Table-4 shows a significant decrease in the number of child births over the three consecutive years from 276 births in the year 2078 to 183 births in 2079, and further down to 139 births in 2080. This trend indicates a notable decline in the fertility rate within the population of your study area, Galkot Municipality.

The difference in the number of child births between each consecutive year provides insights into the magnitude of the decline. The difference between 2078 and 2079 is 93 births, representing a decrease of approximately 33.70%. Similarly, the difference between 2079 and 2080 is 44 births, indicating a decrease of about 24.04%. From the data provided, it is observed a decline in the

number of child births over the years. This decrease could be indicative of several factors related to human migration:

- **Out-migration:** People leaving Galkot Municipality could lead to a decrease in the local population, resulting in fewer child births.
- **Economic factors:** Migration often occurs due to economic reasons. There are limited opportunities or economic challenges in Galkot Municipality, people might migrate to other areas like Chitwan Pokhara and Kathmandu in search of better livelihoods, leading to a decline in births.
- **Social factors:** Social changes, such as changes in family structures or preferences, could also impact birth rates. Migration might be driven by social factors such as marriage patterns or cultural shifts.

Analyzing the trends in birth rates alongside migration patterns can provide insights into the impacts of human migration on Galkot Municipality, Baglung immediately.

Table 4

Child birth rate in Galkot Municipality during 2078-2080

Birth by Year	Number of child birth	Percentage	Difference percentage
2079	183	66.30	-33 %
2080	139	75.95	-24 %

Source: Galkot Municipality foreign employment poster, 2080

4.5 Economic Factors

The presence of 19 jewelry businesses indicates a demand for luxury goods and reflects the economic activities related to the production, sale, and trade of jewelry within Galkot Municipality. Jewelry businesses promotion shows the saving on gold is liked by the residents and dependent family of locals of Galkot Municipality.

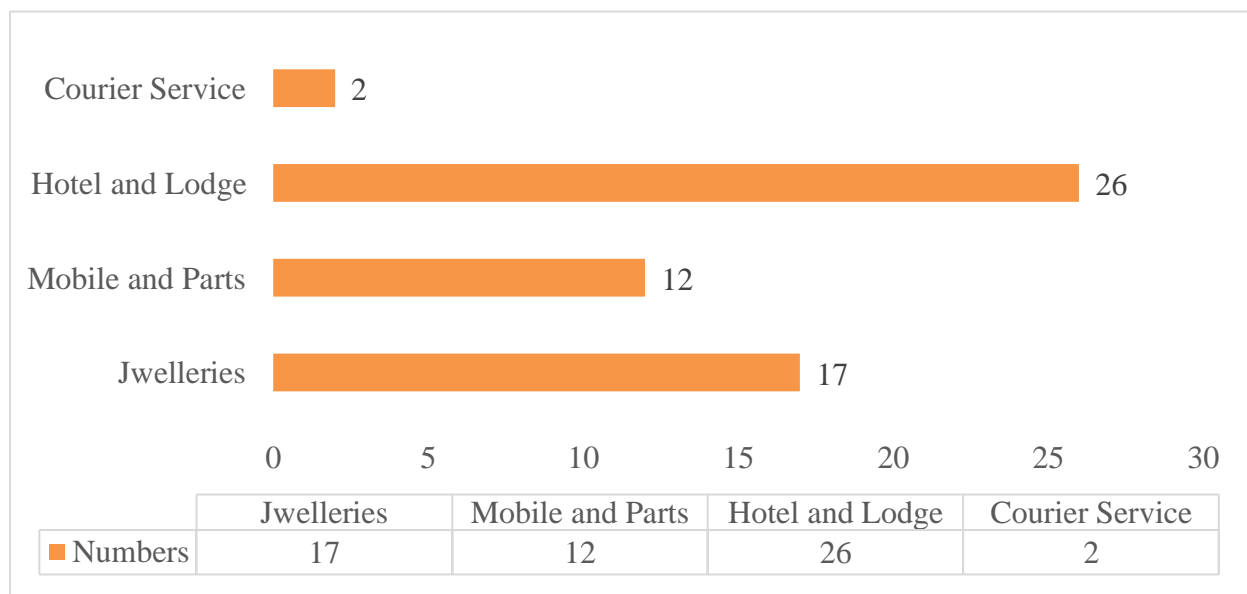
The 14 mobile shops suggest a thriving market for telecommunications products and services in Galkot Municipality. Mobile shops play a vital role in providing access to communication

technology, such as smartphones, SIM cards, and mobile accessories, to the local population. These businesses contribute to economic growth by meeting the communication needs of residents, facilitating connectivity, and supporting digital inclusion and innovation. With 26 hotels and lodges, Galkot Municipality demonstrates a significant presence in the hospitality sector. These establishments cater to tourists, travelers, and visitors, providing accommodation, dining, and recreational facilities. The presence of 14 workshops and garages indicates a thriving automotive and repair industry in Galkot Municipality.

These businesses provide services such as vehicle repairs, maintenance, and spare parts sales, catering to the transportation needs of residents and businesses. Workshops and garages contribute to local employment, skill development, and infrastructure development, supporting the mobility and productivity of the community. While relatively fewer in number, the two courier services reflect the importance of logistics and transportation services in facilitating trade and commerce within Galkot Municipality. Courier services play a crucial role in delivering goods, documents, and parcels, connecting businesses and individuals with markets and suppliers. These services contribute to economic efficiency, trade facilitation, and market access, supporting local businesses and enhancing regional connectivity.

Figure 13

Trade and Business sectors in Galkot Municipality



Source: Galkot Municipality foreign employment poster, 2080

4.5.1 Post returnee of foreign employment impact

Below (Table-5) depicts that the 19 percent of the youth who have returned from foreign employment have returned with some kind of skill training. It seems that if the young people who come back from foreign employment with skills and competences can be mobilized in a planned manner based on their sectoral expertise, it can provide significant support in the local development process. Even though some of the youth have skills and competences, they are not able to compete and participate in local employment opportunities due to the lack of certificates of their skills.

The youths who have returned from foreign employment have said that they plan to test their skills. In such a situation, it seems that the local government can be effective if it conducts a program related to skill testing in cooperation with related agencies. Out of 651 people who returned from foreign employment, 26 percent of them are unemployed and they are looking for a job. Although the number of those looking for employment is large, it has been found that 8 percent are currently employed, 1 percent are in hotel business, 38 percent are engaged in agriculture, 4 percent are engaged in animal husbandry, 7 percent are engaged in other self-employment, and 5 percent are engaged in other businesses. Similarly, it has been found that 11 percent of people are in the process of returning to foreign employment Birth Rate of Galkot Municipality in below Table-5.

Table 5

Returnee from Foreign employment to Galkot Municipality

Returnee from Foreign employment to Galkot	Percentage
Unemployment	26
Agriculture	38
Partial employed	8
Animal husbandry	4
Self-employment	7
Hotel	1
Others	5
In the process of retuning	11
Total	100

Source: Galkot Municipality foreign employment poster, 2080

4.5.2 Financial Sectors

The presence of 8 commercial banks indicates a well-established banking sector within Galkot Municipality. Commercial banks play a crucial role in the local economy by providing a wide range of financial services such as deposit accounts, loans, mortgages, and investment products to individuals, businesses, and organizations. These banks facilitate capital formation, credit access, and financial intermediation, supporting economic activities such as entrepreneurship, investment, and consumption. Additionally, commercial banks contribute to financial inclusion by expanding access to banking services and promoting savings and investment behaviors among residents.

The existence of a development bank signifies a commitment to financing projects and initiatives aimed at promoting economic development and addressing social challenges within Galkot Municipality. Development banks typically focus on providing long-term financing for infrastructure projects, small and medium-sized enterprises (SMEs), agriculture, and rural development. By offering specialized financial products and services tailored to the needs of underserved sectors and marginalized communities, development banks play a catalytic role in stimulating economic growth, reducing poverty, and fostering inclusive development.

The presence of 10 cooperatives highlights the importance of cooperative finance in promoting grassroots economic development and community empowerment within Galkot Municipality. Cooperatives provide a range of financial services such as savings accounts, credit facilities, insurance, and social welfare programs to their members, primarily consisting of local residents, farmers, artisans, and small businesses. By promoting principles of democratic ownership, participatory governance, and social responsibility, cooperatives contribute to poverty reduction, income generation, and wealth distribution, fostering sustainable livelihoods and resilience among community members.

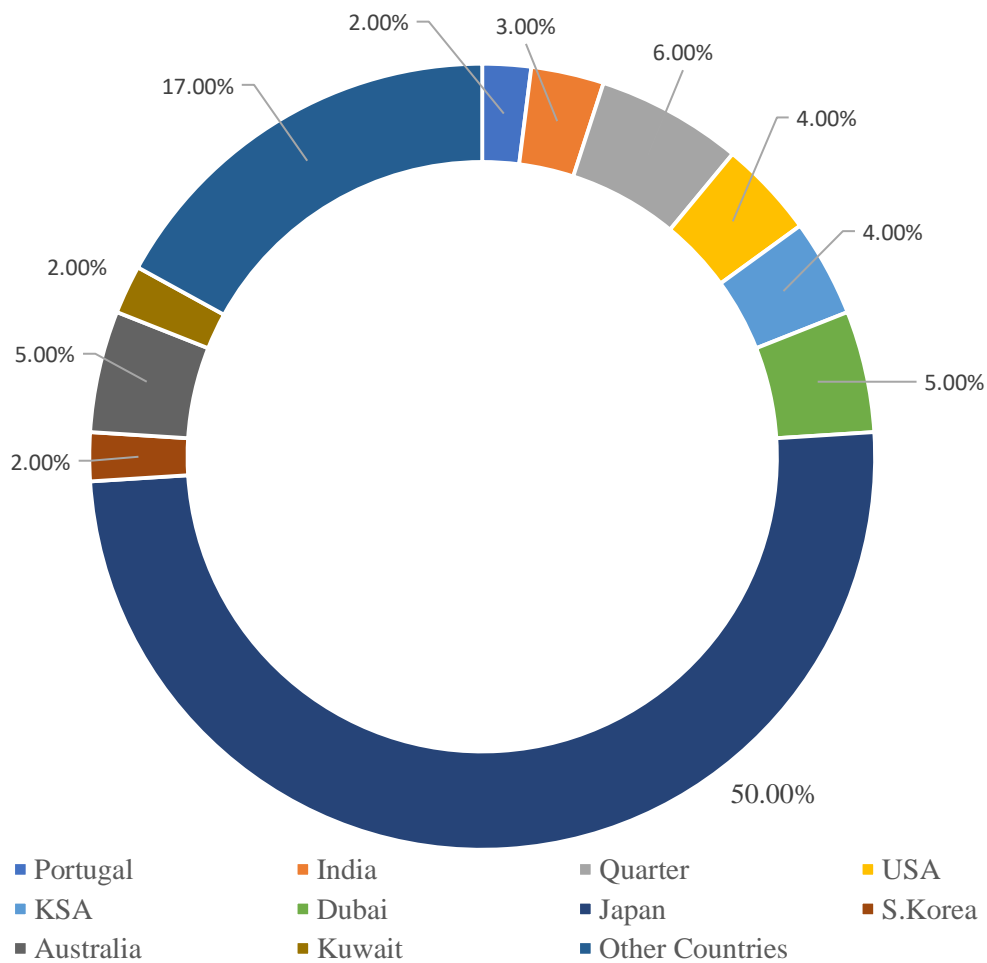
The best part of foreign employment is the acquisition of knowledge, skills, experience and exposure. If the received remittances can be mobilized in the productive sector to create self-employment and employment, it can help in reducing the cyclical situation of having to go to foreign employment. The data shows that the annual remittances to this municipality are around 1 billion 54 million 57 lakh 53 thousand. The data has been prepared on the basis of the remittance details received by the families of 5,086 foreign workers in one year. Calculating the total remittances received annually as the monthly earnings of 5,086 people who are currently abroad, the situation is that young people who are employed abroad are sending remittances to their

families at an average of 26,000 per person per month. About 2 percent (105 people) of the 5,086 youths who are employed abroad have not sent remittances to their families.

Out of the total remittances received in a year, the highest is 50 percent from Japan, about 6 percent from Qatar, 5 percent from UAE/Dubai, 5 percent from Australia, 5 percent from Malaysia, 4 percent from Saudi Arabia, 4 percent from America, 3 percent from Portugal, 2% from South Korea, 2/2% from Kuwait, Portugal and 3% from India. The remaining 8 percent remittances have been received from Cyprus, Poland, Jordan, Canada, Romania and various other European countries. In this way, it has been found that a total of 18 percent of remittances came from Malaysia and the Gulf countries, the main destinations of the youth within this municipality.

Figure 14

Financialization of remittance in Galkot Municipality



Source: Galkot Municipality foreign employment poster, 2080

4.6 Cultural factors

Social reproduction encompasses the fundamental processes that ensure the continuity of human life and social structures. Within the context of migration, social reproduction takes on particular significance. It involves not only the biological aspects of procreation but also the intricate web of relationships, roles, and responsibilities that sustain communities. When individuals migrate away from their home communities, they disrupt these delicate balances. Migrants leaving their communities impact social reproduction in several ways. First, their departure alters family structures. The absence of young adults often the most active contributors to caregiving, child-rearing, and household maintenance creates gaps within families. Elders, children, and other family members may need to adapt to new roles or rely on alternative support networks.

Second, social norms and traditions are affected. Migrants carry cultural practices, beliefs, and values with them, but their absence from the community can lead to a gradual erosion of shared customs. Rituals, festivals, and communal celebrations may lose their vibrancy when key participants are absent. The continuity of cultural heritage relies on the active participation of community members, and migration disrupts this continuity. Third, community cohesion is challenged. The departure of youth for foreign employment often results in a demographic shift. The vitality of a community depends on a mix of age groups, each contributing to its social fabric. When a significant proportion of young people leave, the community loses not only their physical presence but also their energy, creativity, and potential contributions. Social networks weaken, and the sense of collective identity may wane. The social reproduction of migration out involves complex interplays between family dynamics, cultural continuity, and community resilience. Understanding these dynamics is crucial for policymakers, community leaders, and researchers seeking to address the impacts of migration on both sending and receiving communities.

Migrants often embark on their journey seeking better economic opportunities beyond their home country. The desire for higher income and an improved standard of living motivates individuals to explore options abroad. The status quo in their home communities may be characterized by limited job prospects, low wages, and economic instability. Migration becomes an avenue to break free from these constraints and achieve financial security. Migrants hope to earn in a shorter time what might take years back home. Remittances play a significant role. Migrants send money back to their families, supporting household expenses, education, and healthcare. The ability to accumulate income rapidly allows migrants to make a tangible impact on their families' well-being.

However, this pursuit of high income can come at a cost. Migrants often face a dilemma between economic aspirations and cultural ties. Leaving their cultural context behind—temporarily or permanently—becomes necessary for economic advancement. Traditions, values, and norms may be compromised as migrants adapt to new environments and work cultures. The tension between financial gain and cultural preservation can lead to identity shifts and impact personal well-being. The pursuit of high income may override cultural norms and disrupt social relationships.

Families experience separation, affecting emotional bonds and shared experiences. In the receiving country, migrants may form new social networks, but these connections may not fully replace the depth of community ties left behind. Communities also grapple with the loss of their youth, impacting local development, decision-making, and cultural continuity. The quest for high income abroad involves complex trade-offs between economic aspirations and cultural heritage. Migrants navigate this delicate balance as they seek financial stability while adjusting to new cultural landscapes

4.7 Migration impacts on Community

Human migration in Galkot Municipality has substantial economic ramifications for both sending and receiving communities. The outflow of individuals seeking better economic opportunities often leads to a drain of labor from the municipality, affecting various sectors such as agriculture, construction, and small-scale industries. This can result in labor shortages and reduced productivity, particularly in rural areas where agriculture is the primary source of livelihood. Conversely, remittances sent back by migrants contribute significantly to the local economy, providing financial support to families left behind and fueling consumption and investment in the community. However, reliance on remittances may also create dependency and discourage local entrepreneurship and innovation.

Migration also has profound social effects on the fabric of the community in Galkot Municipality. The departure of individuals, particularly young adults, can disrupt social networks and traditional kinship structures, leading to feelings of isolation and loneliness among those left behind. Moreover, migration often results in the separation of families, with spouses and children left to fend for themselves in the absence of migrant household members. This can strain familial relationships and impact the well-being of family members, especially children who may experience emotional distress and educational setbacks due to parental absence. Additionally, the influx of returnees or migrants settling in the community may introduce new social dynamics and

cultural practices, potentially leading to social tensions and conflicts as different groups navigate shared spaces and resources.

4.7.1 Challenges and Opportunities

Human migration from Galkot Municipality presents several challenges. As young people leave for work opportunities elsewhere, the aging population remaining in Galkot places a greater burden on social services and healthcare systems. Additionally, the out-migration of skilled workers can hinder the municipality's economic development and reduce the availability of essential professions like teachers, doctors, and engineers. Furthermore, social disruption can occur due to the breakdown of traditional family structures. Migration can lead to increased loneliness and isolation among those left behind, particularly the elderly. Moreover, the loss of cultural heritage can become a concern as younger generations raised outside Galkot may not be as familiar with local customs and traditions.

Despite the challenges, human migration from Galkot Municipality can also offer opportunities. Migrants often send financial remittances back home, which can improve the economic well-being of their families and contribute to local development projects. Additionally, migrants can gain new skills and knowledge in their destination cities and towns, which they can then share upon returning to Galkot, fostering local innovation and entrepreneurship.

Migration can also serve as a channel for social change. Migrants who experience more progressive social norms in their new surroundings can challenge traditional practices upon returning to Galkot, promoting gender equality and other social reforms. Galkot Municipality can leverage this potential by establishing programs to facilitate the reintegration of returning migrants and encourage them to contribute their knowledge and skills to the development of their hometown.

4.7.1 Positive and Negative aspects of Migration

Migration, particularly from rural areas like Galkot Municipality, can have several positive effects and negative effects and impacts which is shown in the (Table-8) below. One of the most significant benefits is the inflow of remittances. Migrants working abroad send money back home, which is a vital source of income for many families in Nepal. These remittances contribute to the household economy and can be used for various purposes, such as improving living standards, education, healthcare, and investment in local businesses. The economic boost from remittances

is substantial; they account for a significant portion of Nepal's GDP and are a key factor in poverty alleviation at the household level (Rijal, 2022). Furthermore, migration can lead to social and cultural exchanges. Migrants often return with new skills, knowledge, and perspectives, which can contribute to the development of their home communities. This exchange can foster innovation and entrepreneurship, leading to the creation of new businesses and services that can stimulate local economies.

On the flip side, (Table-8) shows the out migration also have adverse effects. The departure of a large number of people, especially the youth, have led to a 'brain drain' where the local area loses its most valuable human resource. Additionally, the absence of a significant portion of the population can disrupt social structures and lead to challenges in maintaining traditional practices and community cohesion

Moreover, the reliance on remittances can sometimes discourage local investment and the pursuit of sustainable economic development strategies. The region's economy, social structure, and cultural practices will shape how migration affects the community. It is also important to consider the policies and initiatives that the local government may implement to mitigate the negative impacts and enhance the positive effects of migration.

Table 8

Positive and Negative Impact of human migration in Galkot Municipality

SN	Positive Impacts	Negative Impacts
1.	Stimulate local economies (Fig-130)	Dependency on remittances (Fig-10)
2.	Inflow of remittances (Tab-5)	Brain drains
3.	Source of income, Savings (Fig-10)	Shortage of skilled workers
4.	Quality education, healthcare, and living	Community cohesion
5.	Invest in local businesses (fig-13)	Old age Care Isolation (Fig-11)
6.	Poverty alleviation	De agriculture (Fig-13)
7.	Exchange can foster innovation and entrepreneurship	Declin in traditional Culture Birth Rate (Table-4)

Source: Created by researcher,2024

4.8 Major Findings

The findings highlight the complex interplay between socio-economic factors, migration trends, and their implications for community well-being and development in Galkot Municipality. Addressing these challenges requires a multifaceted approach, and efforts to promote sustainable development and social cohesion within the community.

4.8.1 Rapidly Increasing Migration

It is becoming increasingly compulsory for residents to leave Galkot in search of better opportunities elsewhere.

4.8.2 Impact on Family Structure

The rush to buy real estate in urban areas reflects a mentality associating wealth and success with city living. However, this trend has led to the fragmentation of family structures, with individuals feeling alone in the community and being forced to migrate after their relatives.

4.8.3 Social Consequences

The migration of working-age adults leaves children and elderly people behind, leading to increased loneliness, depression, and social problems within the community.

4.8.4 Desire for Better Life

Individuals aspire to migrate abroad for improved economic opportunities, higher incomes, and enhanced social prestige, reflecting a global trend towards seeking better standards of living.

4.8.5 Vacant Spaces and Economic Success

The outmigration from Galkot has resulted in vacant spaces, attracting workers from remote areas to settle in the municipality. While residents may experience economic success and increased personal income, the family structure is often shattered, leading to various social challenges.

4.8.6 Search for Economic Opportunities

The primary motivation for migration from Galkot is the pursuit of better economic prospects elsewhere, indicating a fundamental desire for improved livelihoods and financial stability among residents.

4.9 Insights from KII and FGD from community members

Insights gathered from interviews and focus groups with community members in Galkot Municipality provide a multifaceted understanding of the impact of migration on the local community. According to the Mayor of Galkot, migration has been identified as having a negative impact on the municipality, despite the significant influx of remittances. Ward presidents and head teachers echoed these sentiments, highlighting concerning trends such as youth from Khas villages resorting to illegal migration routes to countries like the USA, often spending substantial sums, ranging from 80 to 85 lakhs, to facilitate their journeys. Moreover, it was observed that youths from oppressed groups in Khas and Harichaur villages are leaving the country at an alarming rate, seeking opportunities abroad.

Foreign employment has emerged as a prevalent trend, seen by many as a lucrative avenue for quick and easy money. However, this has raised concerns about the sustainability of local institutions, such as schools, as the exodus of youths has depleted the pool of potential educators. Indeed, there are apprehensions that within a few years, there may be a shortage of teachers to staff schools adequately. The consequences of migration are also evident in the private education sector, with schools facing closures due to dwindling student enrollment in Galkot.

Despite these challenges, the arrival of remittances has sparked improvements in health and education within the community, prompting some individuals to consider internal migration to cities like Chitwan, Bhairawa, and Butwal in search of better opportunities. However, while remittance inflows have provided economic relief to many households, they have also led to a noticeable shift away from traditional agricultural practices, impacting the region's agrarian culture.

One striking observation is the preference among youth for immediate financial gain over pursuing higher education. The allure of earning money abroad, particularly in countries like Japan, has overshadowed aspirations for academic advancement, potentially leading to a shortage of skilled professionals in various sectors. These insights underscore the complex interplay between migration, economic dynamics, education, and social change within Galkot Municipality, highlighting the need for comprehensive strategies to address both the opportunities and challenges associated with migration.

During the Focus Group Discussion (FGD), the researcher made a poignant observation regarding the familial dynamics affected by migration in Galkot Municipality. Participants candidly shared

the poignant reality that children often find themselves compelled to reside with their grandparents, as their parents seek opportunities abroad. Consequently, elderly individuals experience profound isolation from their sons and daughters, contributing to feelings of loneliness and abandonment. This separation of generations has far-reaching implications, with children potentially becoming victims of autism syndrome due to the absence of parental guidance and emotional support. Additionally, a concerning trend emerged whereby families delay funeral proceedings, holding the deceased's body until their sons and daughters return from overseas. This poignant practice underscores the profound impact of migration on familial bonds and traditions within the community.

Furthermore, it was evident from the discussions that the social reproduction of migration trends is rapidly intensifying in Galkot Municipality. This phenomenon reflects the cyclical nature of migration, wherein individuals from migrant households are compelled to seek opportunities abroad, perpetuating a continuous cycle of migration within the community. This trend not only exacerbates the challenges faced by families left behind but also perpetuates the cycle of separation and longing experienced by migrant families. As such, addressing the social reproduction of migration is imperative for fostering sustainable community development and preserving the fabric of familial relationships within Galkot Municipality.

During the Focus Group Discussion (FGD) convened by the Municipality, 23 participants, including health workers and local residents, underscored the pivotal role of health considerations as a primary driver of migration to urban centers such as Chitwan, Butwal, and Kathmandu. The consensus among participants highlighted the significant impact of health-related factors on migration decisions within the community.

The discussions revealed that individuals often opt to migrate to urban areas in pursuit of better access to healthcare services, including specialized medical treatment, advanced facilities, and qualified healthcare professionals. Participants expressed concerns over the limited healthcare infrastructure and resources available locally, which may not adequately address their healthcare needs or those of their families.

Moreover, the perception of superior healthcare facilities and services in urban centers acts as a compelling incentive for migration among residents of Galkot Municipality. Participants emphasized the importance of ensuring access to quality healthcare as a fundamental determinant

of well-being and quality of life, prompting many to consider relocation to urban areas where such services are perceived to be more readily available and of higher quality.

The FGD underscored the intricate interplay between health considerations and migration dynamics, highlighting the multifaceted nature of migration decision-making processes within the community. Addressing the healthcare needs of residents, improving local healthcare infrastructure, and enhancing access to quality healthcare services emerged as key priorities for mitigating migration pressures and fostering sustainable development within Galkot Municipality.

CHAPTER V

SUMMARY AND CONCLUSION

5.1 Summary

This research paper investigates the multifaceted impacts of human migration on Galkot Municipality, situated in Baglung district, Nepal. Through a comprehensive analysis of various data sources, including interviews, focus group discussions, and demographic statistics, key findings emerge, shedding light on the out-migration dynamics shaping migration trends and their implications for the local community.

One of the central themes highlighted is the significant outflow of migrants from Galkot Municipality, driven by a combination of push and pull factors. Socio-economic constraints, such as lack employment, opportunities and inadequate healthcare infrastructure and facilities, quality education people seek better prospects elsewhere. This trend is exacerbated by the allure of higher incomes and improved living standards in urban centers like Chitwan, Butwal, Kathmandu and abroad.

The consequences of migration echoed throughout the community, with profound impacts on various aspects of life. Family structures are often disrupted, as children are left behind in the care of elderly relatives, leading to social isolation and emotional distress. The departure of working-age adults results the shortage of skilled human resource specially youth, affecting sectors such as education, economy and healthcare. Additionally, the reliance on remittances as a source of income underscores the economic dependence of many households on migrant earnings.

Furthermore, the study depicts the intricate interplay between migration and socio-cultural dynamics within Galkot Community. Traditional practices and community cohesion are eroded as individuals prioritize economic opportunities over cultural importance. The influx of remittances leads to shifts in consumption patterns and lifestyle choices, with implications for local economies and social norms.

Amidst these challenges, the study also identifies opportunities for intervention and policy reform. Strengthening local institutions, enhancing healthcare services, and promoting economic diversification creating employments and opportunities are among the strategies proposed to mitigate the adverse effects of migration and foster sustainable development. Moreover, fostering

a sense of community resilience and preserving cultural identities are crucial for navigating the complexities central notions of human migration and ensuring the well-being of residents in Galkot Municipality.

The study provides a comprehensive exploration of the impacts of human migration on Galkot Municipality, offering valuable insights into the drivers, consequences, and potential pathways for addressing the challenges posed by migration. By understanding the nuanced dynamics at play, policymakers and stakeholders can develop targeted interventions to support the needs of migrant communities and promote inclusive development in Gallot area.

5.2 Conclusion

Study has provided a comprehensive analysis of the impacts of human migration on Galkot Municipality in Baglung district, Nepal. Through a combination of qualitative and quantitative research methods, including interviews, focus group discussions, survey and demographic data analysis, and key findings have emerged shedding light on the nuanced nature of migration dynamics and recent impacts on the local community.

The research findings indicate that human migration in Galkot Municipality is driven by a complex interplay of push and pull factors, including socio-economic constraints, limited employment opportunities, inadequate healthcare infrastructure, lack of quality education and the allure of higher incomes and improved living standards in urban centers and abroad. As a result, the municipality has beard a significant outflow of migrants, particularly working-age adults, leaving behind children and elderly relatives at home.

The consequences of migration are far-reaching, impacting various turns in life at Galkot Municipality. Family structures are often disrupted, with children experiencing social isolation and emotional distress due to separation from their parents. The departure of youth and social reproduction of migration trends have led to shortages in each sector of society such as education and healthcare and culture. Additionally, the reliance on remittances as a source of income has implications for economic dependence and fragile local economies.

Furthermore, the research highlights the socio-cultural dynamics, traditional professions, community cohesion and equilibrium of society are eroded by migration. The influx of remittances has led to shifts in consumption patterns and lifestyle choices, influencing local economies, social norms and discouraging the mode of agriculture productions.

However, amidst these challenges, opportunities for intervention and policy reform exist. Strengthening local institutions, enhancing healthcare services, and promoting economic diversification are among the strategies proposed to mitigate the adverse effects of migration and foster sustainable development. Moreover, fostering community resilience and preserving cultural identity are crucial for navigating the complexities of migration and ensuring the well-being of residents in Galkot Municipality.

In conclusion, this study contributes to the existing literature on migration and development by providing insights into the specific context of Galkot Municipality. By understanding the nuanced dynamics of migration, policymakers and stakeholders can develop targeted interventions to support the needs of migrant communities and promote inclusive development in the region.

REFERENCES

- Black, R., Natali, C., & Skinner, J. (2006). Migration and inequality. *World Development Report*.
- Borjas, G. J., & Crisp, J. (2005). *Poverty, international migration, and asylum*. Palgrave Macmillan.
- CBS, N. 2021. (2021). *Household | National Population and and Housing Census 2021 Results*. National Population and Housing Census 2021. <https://censusnepal.cbs.gov.np/results/household>
- Dhami, C. K. (2023). *Distribution of Remittance in Malma Village of Galkot Municipality, Baglung*. Tribhuvan University.
- Galkot, M. (2024). <https://galkotmun.gov.np/> [Home page]. <https://Galkotmun.Gov.Np/Profile>. <https://galkotmun.gov.np/>
- Galkot Municipality. (2023). *Galkot Municipality Profile* (p. 143) [Health Profile]. Website: <https://galkotmun.gov.np/>
- Gautam, T. R. (1970). Migration and the Problem of Old Age People in Nepal. *Dhaulagiri Journal of Sociology and Anthropology*, 2, 145–160. <https://doi.org/10.3126/dsaj.v2i0.1361>
- Gautam, T. R. (2005). Causes and Impact of Migration: A Sociological Study of Emigration From Kandebash, Baglung, Nepal. *Dhaulagiri Journal of Sociology and Anthropology*, 1, 146–163. <https://doi.org/10.3126/dsaj.v1i0.285>
- Geller, S. C. (1997). Migration of Central Venous Catheters: Implications for Initial Catheter Tip Positioning. *Journal of Vascular and Interventional Radiology*, 8(3), 443–447. [https://doi.org/10.1016/S1051-0443\(97\)70586-4](https://doi.org/10.1016/S1051-0443(97)70586-4)
- Goodland, R., & Ledec, G. (1987). Neoclassical economics and principles of sustainable development. *Ecological Modelling*, 38(1–2), 19–46. [https://doi.org/10.1016/0304-3800\(87\)90043-3](https://doi.org/10.1016/0304-3800(87)90043-3)

- Hatlebakk, M. (2010). Maoist Control and Level of Civil Conflict in Nepal. *South Asia Economic Journal*, 11(1), 99–110. <https://doi.org/10.1177/139156141001100106>
- IOM. (2019). International Migration Law. In *Glossary on Migration* (1–International Organization for Migration, p. 248). International Organization for Migration. https://publications.iom.int/system/files/pdf/iml_34_glossary.pdf
- IOM, W. (2024). *About Migration*. International Organization for Migration. <https://www.iom.int/about-migration>
- Kansakar, V. B. S. (2003). *International Migration and Citizenship in*. <https://doi.org/DOI:10.21648/arthavij/2011/v53/i3/117558>
- Kharel, D. (2016). From *Lahures* to Global Cooks: Network Migration from the Western Hills of Nepal to Japan. *Social Science Japan Journal*, 19(2), 173–192. <https://doi.org/10.1093/ssjj/jyw033>
- Kharel, M., Akira, S., Kiriya, J., Ong, K. I. C., & Jimba, M. (2021). Parental migration and psychological well-being of left-behind adolescents in Western Nepal. *PLOS ONE*, 16(1), e0245873. <https://doi.org/10.1371/journal.pone.0245873>
- Khatiwada, P. P. (2010). *Conflict Induced Migration in Nepal (A Social Inclusion Perspective)*. Tribhuvan University,.
- Lawoti, M. (2009). *The Maoist Insurgency in Nepal: Revolution in the Twenty-first Century* (1st ed.). Routledge. <https://doi.org/10.4324/9780203869390>
- Maharjan, M. R. (2015). Emigrants' Migrant Wives: Linking International and Internal Migration. © *Martin Chautari*, 20(2):(217–247).
- Merchant, G. (2012). Unravelling the social network: Theory and research. *Learning, Media and Technology*, 37(1), 4–19. <https://doi.org/10.1080/17439884.2011.567992>
- Nepalidata. (2024). *Local Resource Map—Galkot Municipality/ Resources*. <https://nepalidata.com/resource/Local-Resource-Map---Galkot-Municipality/>
- Ng'andu, P. (2019). *Illegal Immigrants in Southern Africa: Analysis of Dynamics Propelling Illegal Immigrants in Zambia*. 4(8).

- Paudel, L. N. (2022). Remittances and the reconfiguration of rural finance in Nepal (1900–1960). *Environment and Planning A: Economy and Space*, 54(4), 822–838. <https://doi.org/10.1177/0308518X221092777>
- Ratha, D., Mohapatra, S., & Scheja, E. (2011). Impact of Migration on Economic and Social Development: A Review of Evidence and Emerging Issues. *The World Bank Development Prospects Group Migration and Remittances Unit & Poverty Reduction and Economic Management Network February 2011*, 5558.
- Rijal, A. (2022). *Opportunities and Challenges of Migration for Nepal*. Nepal Economic Forum. <https://nepaleconomicforum.org/opportunities-and-challenges-of-migration-for-nepal/>
- Sharma, S. (2022). *Climate Change Impact in Agriculture: A Study of Baglung Municipality - 12 Baglung, Nepal*. Tribhuvan University.
- Shrestha, N. R. (1985). The political economy of economic underdevelopment and external migration in Nepal. *Political Geography Quarterly*, 4(4), 289–306. [https://doi.org/10.1016/0260-9827\(85\)90036-9](https://doi.org/10.1016/0260-9827(85)90036-9)
- Susan Forbes Martin. (2004). “*Migration and Mobility and how this movement affects Women*” (CM/MMW/2003/WP.1).

APPENDICES

Appendix “A”

(Ref. 3.4.2 Survey Questions, p.23)

Sample Questionnaires

Declaration

I am a student of Masters in Security, Development and Peace Studies (MSDPS) at Armed Police Force Command and Staff College, Sanogaucharan Kathmandu. I am here to collect the data for my research work on “Impacts of Human Migration in Galkot Municipality, Baglung”. The study will protect the anonymity of individuals, roles, and incidents. The use of aliases or pseudonyms for individuals and places will be applied to protect the identities in qualitative part of the study. The data will be kept for five years. No fraudulent practices will be practiced to falsify or invent the findings. The source and data will be kept confidential as per the ethics of research. The research will be conducted adopting the general principles of ethical standard viz. beneficence & non- maleficence: fidelity & responsibility; integrity; justice and the respect to the peoples' rights and dignity.

Part One (Personal and Details)

1 Full Name (Optional)

2. Address Permanent (In Short)

3. Address Migrated one (In Short)

4. Profession/occupation (*Mark only one oval.*)

Govt /Non Govt service

Business

Company Job

Own business

Labor force

Farming

Others

5. Gender (*Mark only one oval.*)

Male

Female

Others

6. Marital Status: (*Mark only one oval.*)

Married

Single

Widowed/Divorced/Separated

7. Highest level of education completed (*Mark only one oval.*)

No formal education

Primary school

Secondary school

Higher secondary school

University degree or above

8. Age (*Mark only one oval.*)

<20

20-30

30-50

50-60

>70

Part Two: Questionnaires

9. Reasons for Considering Migration (*Mark only one oval.*)

Lack of employment opportunities in Galkot Municipality

Low wages/salaries in Galkot Municipality

Better job prospects in other locations

Desire for higher education opportunities unavailable in Galkot Municipality
Better healthcare facilities in other locations

Unsatisfactory living conditions in Galkot Municipality (e.g., lack of sanitation,

Security concerns in Galkot Municipality

Following family members who have already migrated
All of the above

10. Since migration has increased, how has the availability of labor in Galkot Municipality changed? (Choose one) Mark only one oval.

- Increased significantly
- Increased slightly
- Stayed the same
- Decreased slightly
- Decreased
- significantly

11. How has migration affected the flow of remittances (money sent back home) into Galkot Municipality? (Choose one) Mark only one oval.

- Increased significantly
- Increased slightly
- Stayed the same
- Decreased slightly
- Decreased significantly

12. To what extent has human out migration observed new cultural practices and norms to Galkot Municipality? (1 = Strongly Disagree, 5 = Strongly Agree) Mark only one oval.

- (Strongly Disagree)
- (Disagree) (Neutral)
- (Agree) (Strongly)

13. How has migration impacted family life in Galkot Municipality? Mark only one oval.

- Increased financial burden on families left behind

- Strengthened family bonds through communication technology
- Created feelings of isolation and social problems for families
- Increased opportunities for family reunions

14. How has migration out from Galkot evolved over time? Mark only one oval.

- It has decreased significantly.
- It has remained relatively stable.

15. How has migration affected the daily life of people in Galkot? Mark only one oval.

- Positively (e.g., improved living standards, access to better opportunities)
- Negatively (e.g., loss of community ties, cultural changes)
- No significant impact
- Not sure

16. Please share your any thoughts or experiences related to migration in Galkot Municipality.

- Economic opportunities (e.g., better jobs, income) Lack of employment opportunities
- Education and skill development
- Social factors (e.g., family reunification, marriage)
- Environmental conditions (e.g., natural disasters, climate change) others

18. How would you rate the influence of the following factors on migration decisions? (1) Moderately influential (2) Very influential (3) Extremely influential Mark only one oval.

- Economic factors (e.g., income, job prospects)
- Social factors (e.g., family, community, social networks)
- Environmental factors (e.g., climate, natural disasters)

19. In your opinion, which country would be first and preferred out migration destination and why?

20. What factors have contributed to the acceleration of internal migration out of Galkot?

Mark only one oval.

- Economic factors (e.g., job prospects, income) Social factors (e.g., family reunification, marriage)
- Environmental factors (e.g., natural disasters, climate change)
- Lack of local amenities (e.g., healthcare, education)
- All of the above

21. What changes have you observed in community relationships and family relation due to migration out of Galkot Municipality? Mark only one oval.

- Family relationship is becoming complex and challenges
- Strengthened family and community bonds
- Weakened family and community ties
- No noticeable impact
- Not sure

22. How has migration affected the local economy in Galkot? Mark only one oval.

- Boosted economic growth (e.g., remittances, investment)
- Strained local resources (e.g., increased demand for services)
- Minimal economic impact

23. Apart from social, economic, and cultural aspects, have you noticed any other consequences

- Environmental changes (e.g., land use, deforestation)
- Health-related effects (e.g., access to healthcare)
- Educational shifts (e.g., school enrollment)
- All of the above
- Not sure

24. Please write your few words (compulsory) about "Important observation "you have made on the human out migration in Galkot Municipality.

Appendix "B"

Ref. 3.4.2 Survey Questions, p.24

Details of participants in FGD

गल्कोट नगरपालिका
नगर कार्यपालिकाको कार्यालय
स्वास्थ्य शाखा

स्वास्थ्य चौकीको न्यूनतम सेवा मापदण्ड कार्यक्रमको पालिका स्तरीय अभिमुखिकरण तथा समीक्षा कार्यक्रमको
उपस्थिति

मिति: २०८०/१२/०६ गते स्थान: भण्डारी पार्टी प्यालेस

सिनं	सहभागी/सहजकर्ताको नामथर	पद	ठेगाना	मो नं	स्टेशनरी	उपस्थिति	कै.
१	भारत शर्मा	ने.प्र.	गल्कोट		—		
२	धामन सिंह जाँत	प्र.प्र.का.	गल्कोट		—		
३	बाल वं शर्मा	वडाप्रमुख	गल्कोट १		१		
४	हिम वं शर्मा	"	गल्कोट २		१		
५	राज वं थापा	"	गल्कोट ६	९८५७३२२३२१	१		
६	तेज वं थापा	"	गल्कोट ३		१		
७	शक्र वं काउचा	"	गल्कोट १०		१		
८	शुक्र वं शर्मा	का.प्र.	गल्कोट ३	९८५७६५०९१९	१		
९	कुण्ड वं शर्मा	का.प्र.	गल्कोट ४	९८५७२९००६	१		
१०			गल्कोट २				
११	रमेश वं कुँडेल	वडाप्रमुख	गल्कोट ६				
१२	शक्र वं शर्मा	वडाप्रमुख	गल्कोट ११		१		
१३	शिवलाल जाँत	का.प्र.सि.	गल्कोट ८		१		
१४	शमशेर शर्मा	Facilitator	BYC/Parimal	९८५७६०७६	१		
१५	पवित्रा मजली	ज.स.सि.	गल्कोट १		१		
१६	दानमथा सुना	सि.अ.हे.व.	गल्कोट १	९८६६५८८०९९	१		
१७	शिवम शर्मा	ज.स.सि.	गल्कोट १	९८५७६५५५२०	१		
१८	जोश सुना	सि.अ.हे.व.	गल्कोट १	९८५७६२९३९	१		
१९	शोभा काउचा	अ.स.सि.	गल्कोट १	९८५७६३८९२१	१		
२०	सिम्रा पुन	हे.अ.	गल्कोट १	९८५७६०७७६९	१		

तयार गर्ने संस्थाको छाप प्रमाणित गर्ने

Appendix “C”

(Photo Gallery)



Galkot Municipality Arial View



Hatiya Bazar Drone Camera View



Data Collection with KII



Data Collection with School Teachers



Data Collection with a resident



FGD with Health Workers