

**Child Labours Working as Coductors in Micro-Bus
(A Case Study in Kathmandu Valley, Nepal)**

Thesis

Submitted to:

Central Department of Rural Development

Faculty of Humanities and Social Sciences

Tribhuvan University

In Partial Fulfillment of the Requirements for the Degree of
Master of Arts in Rural Development

Submitted By:

Shani Baba Shrestha

Kathmandu, Nepal

March, 2007

LETTER OF RECOMMENDATION

It is certified that the Thesis entitled **Child Labours Working as Coductors in Microbus (A Case Study in Kathmandu Valley, Nepal)** has been prepared by Mr. Shani Baba Shrestha under my supervision and guidance for the partial fulfillment of the requirements for the Degree of Master of Arts in Rural Developments. Therefore, this thesis is recommended for its evaluation.

Mr. Yogendra Bista
Research Supervisor

Date: 2063-11- 22

Approval Sheet

This is to certify that the Thesis submitted by Mr. Shani Baba Shrestha entitled **Child Labour Working as Conductor in Microbuses: A Case Study of Kathmandu Valley, Nepal** has been approved by this department in the prescribed format of the Faculty of the Humanities and Social Sciences. This project report is forwarded for the evaluation.

Evaluation Committee:

Head of Department

External

Research Supervisor

Date: 2007-3-12

Table of Contents

Letter of Recommendation	
Approval Sheet	
Acknowledgement	PAGE
List of Tables	
Abbreviations /Acronyms	
Abstract	
Chapter One: Introduction	1-9
1.1 General Background of the Study	1
1.2 Statement of the Problem	5
1.3 Objectives of the Study	8
1.4 Significance of the Study	8
1.5 Limitation of the Study	8
1.6 Organization of the Study	9
Chapter Two: Review of Literature	10-18
2.1 Conceptual Review	10
2.2 Review of the Related Studies	13
Chapter Three: Methodology	19-21
3.1 Research Design	19
3.2 Nature and Sources of Data	19
3.2.1 Primary Data	19
3.2.2 Secondary Data	19
3.3 Universe and Sample Size	20
3.4 Data Collection Techniques	20

3.4.1 Interview	20
3.4.2 Observation	20
3.4.3 Interview with Key Informants	20
3.5 Data Analysis and Interpretation	21
Chapter Four: Analysis and Interpretation of Data	22-43
4.1 Background Characteristics of Conductors	22
4.1.1 Place of Origin	22
4.1.2 Caste/Ethnic Composition	23
4.1.3 Age Structure	24
4.1.4 Family Type	24
4.1.5 Family Size	25
4.1.6 Educational Status of Conductors	26
4.1.7 Interest for Schooling	26
4.1.8 Parental Status	27
4.1.9 Causes of Leaving Home	28
4.1.10 Parental Educational Status	28
4.1.11 Facilities Available in The Village	29
4.2. Socio-Economic Condition of Conductors	30
4.2.1 Parental Occupation	30
4.2.2 Food Sufficiency at Home	30
4.2.3 Earning Status of Conductors	31
4.2.4 Saving Pattern of Conductors	31
4.2.5 Supports to the Family	32
4.2.6 Expenditure Pattern of Conductors	33
4.2.7 Causes of Being Conductor	34
4.3 Working Condition and Environment	35
4.3.1 Working Hours	35
4.3.2 Working Duration in Micro Bus	36

4.3.3 Holidays and Free Time of Conductors	36
4.3.4 Facilities	37
4.3.5 Job Satisfaction	38
4.3.6 Habits of Conductors	39
4.3.7 Health Condition	39
4.3.8 Behavior of Passenger	40
4.3.9. Problems of Conductors	41
4.3.10 Perception about the Profession	41
4.3.11 Accident	42
4.3.12 Child should Work Opinion of Conductors	42
4.3.13 Living Condition of Conductors	43
Chapter Five: Summary, Conclusions And Recommendations	44-49
5.1 Summary	44
5.2 Conclusions	47
5.3 Recommendations	48
5.3.1 Recommendation for Further Study	49
Bibliography	50
Appendix	53

List of Tables

Table 1: Distribution of Respondents by Their Place of Origin	22
Table 2: Distribution of Respondents by Their Caste/Ethnic Composition	23
Table 3: Distribution of Respondents by Their Age Group	24
Table 4: Distribution of Respondents by Their Family Composition	25
Table 5: Distribution of Respondents by Family size	25
Table 6: Distribution of Respondents by Their Educational Status	26
Table 7: Distribution of Respondents by Their Interest for Further Education	27
Table 8: Distribution of Respondents by Their Parental Status	27
Table 9: Distribution of Respondents by Their Causes of Leaving Home	28
Table 10: Distribution of Respondents by Their Parental Education Status	28
Table 11: Distribution of Respondents Having Different Facilities in the Village	29
Table 12: Distribution of Respondents by Their Parental Occupation	30
Table 13: Distribution of Respondents by Their Food Sufficiency at Home	30
Table 14: Distribution of Respondents by Their Daily Wages from Micro Bus	31
Table 15: Distribution of Respondents by Their Savings	32
Table 16: Distribution of Respondents by Their Support to Their Family	32
Table 17: Distribution of Respondents by Priority to Spend Their Income	33
Table 18: Distribution of Respondents by Various Reasons of Being Conductors	34
Table 19: Distribution of Respondents by Their Working Hours Per Day	35
Table 20: Distribution of Respondents by Their Working Duration in Micro Bus	36
Table 21: Distribution of Respondents by Getting Holidays Once a Week	37

Table 22: Distribution of Respondents by Getting Other Facilities	37
Table 23: Distribution of Respondents by Their Job Satisfaction	38
Table 24: Distribution of Respondents by Their Bad Habits	39
Table 25: Distribution of Respondents by Their Health Condition	40
Table 26: Distribution of Respondents by Their Passengers Behavior	40
Table 27: Distribution of Respondents by Their Problems	41
Table 28: Distribution of Respondents by Perception to about Their Present Profession	41
Table 29: Distribution of Respondents by Facing an Accident	42
Table 30: Distribution of Respondents by Their Opinion Towards Child should Work or Not	42
Table 31: Distribution of Respondents by Living Condition	43

Abbreviations/Acronyms

CBS	Central Bureau Statistics
CWIN	Child Workers in Nepal
CWS	Child Welfare Society
HDR	Human Development Report
HRS	Helpless Rehabilitation Society
IDUs	Injercting Drug Users
ILO	International Labour Organization
INGO	International Non-governmental Organization
IPEC	International Program on Elimination of Child Labour
MoH	Ministry of Health
NCPC	Nepal Child Protection Centre
NewERA	New Educational Research Associates
NGO	Non-governmental Organization
NRs	Nepelese Rupees
UNDP	United Nations
UNFPA	UN Fund for Population Activities
UNICEF	United Nations International Children Education Fund
USAID	United States Agencies for International Development
WHO	World Health Organization
VDC	Village Development Committee

Abstract

Child Labour, designation formerly applied to the practice of employing young children in factories, now used to denote the employment of minors generally, especially in work that may interfere with their education or endanger their health. Child labour is a universal phenomenon that no country has been out of this problem. Though, it is receiving attention of the whole world in recent years, the problem has been still critical. A developed nation or civilized society can not be imagined with out the elimination of child labour.

Nepal is a developing south Asian country crawling on the path determined by the first decade of the 21st. Century. The country has both opportunities and threats in its path. Child labour is rampantly found in Nepal which is a great threat to the path development. If we do not take steps to solve this problem, the dream of so-called new Nepal cannot be fulfilled.

*This study, **Child Labour Working as Conductors in Micro-Bus** was undertaken to enquire the children's present working condition, their socio-economic status and the contextual factors leading them to work. The study was an attempt to draw a picture of working condition of children in minibuses in Kathmandu Valley. There were 50 respondents who were currently working as conductor in minibuses, taken for the study purpose.*

The necessary theoretical concept about the child labour, and relationship between community and children was developed from relevant literatures reviewed. This part is also important part of this report. The study designed includes the selection of the sample, collection of data from the questionnaire schedule, observation in the field, interview and with key informants.

The results obtained from the analysis of the data can be summarized as:

-) Majority of the conductors were from adjoining district of Kathmandu Valley. 20% respondents were from Kavre district, 18% were from Dhading, 16% were from Makawanpur and 14% were form Sindhupalchwok district.*
-) Majority of the respondents were illiterate out of total 50 respondents, 34(68%) respondents were illiterate and only 32% were able to read and write.*
-) Poverty was the main reason of being conductor. Because of 66% respondents had main reason of being conductors was poverty.*
-) Most of those children expressed as their aim to be a driver in future and rest want to be mechanic and continuation of this conductor profession.*
-) Majority of the respondents working hours was very high. Because of 72% were working more than 12 hours per day.*
-) Unless child labour is not eradicated from the country, the overall development cannot be possible. So, concern authorities should give attention to child labour. After the study, the following recommendations have been made to be taken for the elimination of child labour.*
-) The government, NGOs and INGOs should launch the effective programme for poverty alleviation in the rural areas immediately.*
-) The law made to punish for any kind of child labour needed to be effectively implemented.*
-) The government should launch an awareness campaign against the child labour to all over the country with a strong master plan management.*
-) Health check up facilities should be provided by every employer.*

Chapter One

Introduction

1.1 Background of the Study

Child labour is a worldwide phenomenon. It has existed in different types of human society at different stages of history and continues to exist in many parts of the world. However, it has emerged as a major social problem in many of the least developed countries where stark poverty and rapid population growth have compelled children to seek employment for the survival of the families to which they belong. From the demand side, use of child labour provides for lowering of cost of production and access to labour that is unresisting, unorganized and almost inexhaustible. A distinction, however, needs to be made between child labour and child work. While child work does occur in almost all societies and is accepted as not being harmful, but child labour occurs in certain specific situations and is considered as undesirable because of its long-term implications on education, health and human development of the children.

Child labour in Nepal is prevalent in traditional agricultural sector, service sector like small hotels, restaurants, transport and tourism, manufacturing sector mainly carpet and garments factories, domestic services, etc. They are working long hours at low wages, poor working environment. But the issue of child labour has attracted considerable attention in recent years. This attention has been sparked off by the findings of some research studies. These studies showed a very high incidence of child labour in the booming carpet factories in the early 1990s.

The Constitution of the Kingdom of Nepal (1990) protects the interests of the children. Similarly Nepal ratified the ILO conventions, UN Convention, Colombo Resolution, Rawalpindi Resolution, Male declaration etc which are related with child rights and elimination of child labour. But the volume of the child labour has not declined. The major reason behind the problem of child labour is the poor and depriving economic condition of the country and also lack of dedication of the concerned authorities of the government.

Nepal is one of the poorest countries in the world. According to the government figures almost 31 percent Nepalese live below the poverty line. Not only the economic indicators but also the social indicators show that there is a lot to do to improve the situation of the majority of Nepal is. The situation of children and women is not satisfactory and they face a variety of social and cultural problems. In Nepal child labour is one of the major social and economic issues. It is estimated that about 2.6 million children, i.e. about 42 percent of the total child population is working child labour that poses a big challenge towards achieving better child rights and human rights conditions in the country.

In the context of Nepal, child labour is in practice and it is found in many occupations. In the underdeveloped countries, children must support their families economically being labourers on are forced to leave home and survive independently. For this reason, the overwhelming majority of children become child labours. The proportion of number of children in Nepal is higher than in other developing countries considering the size of total population. Naturally, the proportionate of child labour is higher and exploitation over then is growing reality. Even affluent parents depend on the income earned by their children .Over worked parents are relieved of their heavy burden assume work to support the family.

Nepal is a country where children are suffering one such form of this suffering is child labour, which is not a new thing to this agriculture dominated nation. The increase child labour exploitation in Nepal is partly caused by the increasing marginalization, landlessness, unemployment and unplanned urbanization.

According to the ILO-IPEC, the number of children working in Nepal is harrowing. Of all children aged five to fifteen years, 2.6 million are regularly put to work that's over 40 percent of all children in the country. A further 36.7 percent of children work and go to school at the same time. Of all working children in Nepal, the majority are girls (55%). It is also shown that girls work longer hours than boys, 88 percent of economically active girls work 14 hours or more per day. There are also more children working in the mountains than in the Terai area, work participation rate is 52.3 percent in the mountain

region, 36.3 percent in the Terai region and 45.4 percent in the Hilly region. 127,000 are involved in most hazardous and worst forms of child labour.

Children are the source of inspiration and hope for society. Every society wishes to bring up its children in an atmosphere of love and care in peace and harmony. However millions of children are forced to live and work in critical circumstances. Children living in least developed countries face more serious problems with regard to their survival development and protection. As part of the least developed world, Nepal has been caught in the painful socio-economic and political turmoil for many years. On the one hand, the national economic growth is decreasing, whereas on the other hand, the budget allocated for development, including in essential social areas of education, health and rural drinking water has been shifted to society. This situation directly or indirectly affects children in their social, physical mental and emotional development (CWIN, 2002).

Children are future of the nations, so their all round development is quite essential. Children are innocent, faultless and symbol of creativity. But in our society, the proper environment for them is not available in which they could grow happily rather they are ill-treated and exploited by bourgeois people. In Nepal children are facing various problems due to backwardness. Poverty and illiteracy are the main causes of increasing child labour in Nepal.

Children work to support the family to fulfilling the hungry stomach. Obviously the children are not happy to work in such a young stage but what shall they do for their hunger stomach.

According to UNICEF/ CWIN, 1998 it is estimated that 5 million children are directly involved in different forms of child labour and child works in Nepal, nearly 50,000 children in Nepal who have migrated from rural areas to urban areas among them, there are approximately 300000 child labours in different kinds of jobs. Such as 5000 street children, 40000 children worked in to India and elsewhere for this purpose. The CRC(2000) 22000 children are involving in work of striking stone, 600 are in tea garden,

100000 are working in small hotel / restaurant. 300 children are working as conductors in tempos and micro buses.

Micro buses are the local transportation in urban areas of Nepal especially in Kathmandu valley. Because they give fast services and people having limited income can also afford. So Micros are affordable vehicle for the poor people.

Nepal is one of the poorest countries in the world. In reality child labour and its exploitation have been common throughout in Nepalese history. In addition to economic factors such as unemployment, there are socio-cultural institutions that foster the incidence of child labour. In the first six months of 2004, (CWIN) collected information on child labour relation from research reports, newspapers and other sources and found 54 deaths of children as a direct result of armed conflict (42 boys, 12 girls). These deaths were caused by bomb blasts, cross fire and other forms of violence two suicides of children were directly tied to armed conflict (1 boy, 1 girl). 99 children were injured, 77 children were arrested and 6689 children were abducted.

Nepal has one of the highest proportions of employed children for any Asian countries with 259,600 children who represent 41.7 percent of all children in the 5 to 14 years age category in the country. According to a survey, in Nepal, about two million children qualify as a child labour (CWIN).

In most developing countries, child labour issues have only recently come into the spotlight of practical and economic discussions. The problem of child labour has become emerging issue in Nepal. There is a gradual increase in social awareness among different segments of society on the issue and help to empower the movement for the rights of working children. Child labour exists in various sectors and modes of life. They are deprived of the minimum level facilities, working long hours, getting very low wages damaging their physical and mental development.

This hindering reality of the world today is directly affecting the growing child labour and child exploitation. While we are speaking in the mass meeting and writing essay that “Children are the future of the nation, builders of the nation, sparkle stars for the nation.”

And so on, but those who are taking responsibilities even do not care about what happening to those children at present. Of course the children are not happy to work in such a young stage. So there is no other way except to involve in the economic activities. But in the meantime some people having the exploited nature do not hesitate to maximize the use of child labour because the cheapness and easily available. In Nepal, according to the “Constitution of Nepal (2047).” Every person after completing the age of 18 years are known as adult and they have the voting rights. It means people under the age of 18 years are known as children.

Micro bus is the prevalent means of local transportation in urban areas of Nepal especially in Kathmandu valley. People having limited income can also the rare of micro bus and gives faster services.

1.2 Statement of the Problem

Children are integral part of nature without children we cannot imagine the existence of the world nor can we think of new creation. Of course, children are the rays of hope. So health, education residence and healthy environment are the basic needs of every child. Despite these necessities, thousand of children in Nepal are struggling only for stomach.

Child labour is a serious and spread problem especially in Nepal. If the children are facilitated with food care affection, love and education then they will go in a proper way they will become a good citizen of the country and as a result they will be able to contribute to the country if the child is not facilitated with food shelter and education they would not grow as normal child. When they exploited in their childhood, the nation cannot hope any creative work by them and contribution for the nation. So, the children should be provided proper food, shelter, care, education, love and affection that will help them to develop their social physical and mental development. It is the most important period to make them knowledgeable, capable, responsible, sensitive and good citizen by including conductive values.

Children are an integral part of the society. Therefore, they deserve the childhood rights as it is their in-born human right. UN Convention on the Rights of the Child 1989 has

ensured that every child in the world has right to survival, development, protection and participation. This ensures the right to protection from every sort of exploitation and harm. Children are regarded as a source of hope and inspiration for future. However, an overwhelming majority of children in the world is deprived and denied for their fundamental rights. This situation is particularly very alarming in the third world countries, where a big majority of children are living and working in the most difficult circumstances. Children in this part of the world are not only suffered of hunger, malnutrition and exploitation, but are also subject to exploitation and abuses, and ultimately, they survive a painful life. Child labour is the state where children are physically, economically and socially exploited and abused. Child labour is considered as a way of everyday life in the Nepali society. One of CWIN survey study has exposed that children in Nepal are involved in more than 65 different labour sectors. Child labour is a cause and consequence of the socio-economic and political reality.

Poverty is main factor of child labour, because if a family is unable to afford for their food, clothes and shelter then child has to work for living. others factors such as maltreatment of parents, heavy work load at home, no chance for schooling , negligence of parents are also responsible factors for migration of children towards cities and becoming child worker. There are more job opportunities in urban area than village, but those opportunities are limited as the urban area of Nepal is very small still under the developing process. But the migration of the people to the urban area in search of employment is gradually growing up. Therefore, they have been compelled to survey only adopting any sort of small jobs. In this way they were poor in the village and remain poor in urban area too.

Child labour has been one of the critical and neglected issues for a long time. It is a universal phenomenon that no country has been out of these problems. However, receiving a world wide attention is recent years, the problems have been still critical. It is due to poverty, that compels parents to make the children work for money and the employer never hesitates to take advantage of it, because of the cheapness.

There is always lack of enough parental care education for more than 3 million working children. Though the Children's Act (1992) prohibits children to work under the age of 14, children are lured to urban areas with dreams and economic attractions. Innocent parents prefer to send their children to work for household support rather than to schools due to the immediate return available by sending the children to work. Due to the lack of compulsory and free education provisions in Nepal, most parents do not send their children to school. Parental accountability towards children is still a major issue in the Nepalese community. The participatory rights of children are still not taken seriously by major stakeholders

Protection and promotion of child rights is a challenging issue for the countries like Nepal, where as lack of awareness and education among general population and the traditional beliefs are not in the live of children's rights in this condition, it is not possible for the state alone to bring social change without active participation of the society. So there is a need of increase in the active participation of the civil society.

Several NGO/INGO have been working in this field. A large number of child workers in the transportation sector are still prevalent, including micro-bus and tempos in Kathmandu valley. This thesis on socio economic condition of micro bus conductors on Kathmandu valley, will try to address the following questions.

- a. How did they become a conductor of micro buses?
- b. What are the major problems faced by them?
- c. What socio-economic background of the micro and tempos boys?

1.3 Objectives of the Study

The general objective of this study is to explore the general background characteristics of conductor and analyze the major problems faced by them. The specific objectives of this study are to:

- a. To analyze the socio-economic condition of conductors.
- b. To examine the working condition and environment of conductors.
- c. Assess the contextual factors leading them to child labour.

1.4 Significance of the Study

No society can even imagine its existence in absence of children. So we say that children are our source of hope and inspiration. They are regarded as the future stars of the national building movement. How can children make their future bright? Everyday is a day of labourer for these children. They risks losing growth, development, love, care and protection of family and can not even enjoy the rest and play that are every children's rights. Moreover, existing legislation are weak for their job, security and there is always a high rate of turnover. Thus this study will help to understand the magnitude of the problem related to child labour. This study will be helpful to NGO/INGO and GO'S, other organization, policy makers and other interested people who working for child welfare.

1.5. Limitations of the Study

The Few notable limitations can be pointed out as follow.

- a. Due to time limitation only 50 child labours were interviewed, more could have been desirable. Generalizing its finding in it's entirely at the national level could be risky.
- b. Respondent children were generally hesitant to talk to the strangers. Hence, some in depth insights might have been missed at due to children's shyness.

- c. The study is focused on the behavior of conductors and their socio-economic status in the study area
- d. The findings of the study can be generalized on the basis of the objectives only. So it cannot be cover other aspects of their life.

1.6. Organization of the Study

The study is organized into Five chapters (1) Introduction (2) Literature Review (3) Research Methodology (4) Analysis and interpretation of Data (5) Summary, Conclusions and Recommendations.

In the First chapter, the subject has been introduced; the problem is stated and the objectives of the study are presented. Besides, justification of the study and Limitation of the study have been defined.

In the Second chapter, the related literatures have been reviews. The literatures consist of books, study reports, journals, newspapers, magazine and relating to the child labour and the problem of child conductor.

In the Third chapter contains Research Methodology. In this chapter selection of the study area, sample size, tools of data collection have been presented.

In the Fourth chapter, the collected data for the purpose of this study through the questionnaire are the presented in a number of tables. General background characteristics of conductors, socio-economic condition of conductors and their working condition and environment.

In the Fifth chapter explains the summary of the whole study along with major conclusions and recommendation of Conductors.

Chapter Two

Literature Review

2.1. Conceptual Review

Child labour has been one of the critical issues for a long time. It is a universal phenomenon that no country has been out of this problem. However receiving a worldwide attention in recent years, the problems have been still critical. It is due to the poverty, which compels parents to make the children work for money and the employer never, hesitates to take advantage of it because of cheapness.

For centuries, child labour has been recognized as normal practice by every society in most part of the country. Poverty and deprivation are main key factors that have contributed to the growing number of children in the exploitative labour market. However parents ignorance, family breakdowns and the trend of child exploitation have been multiplying the degree of child labour exploitation in the country. The challenges of child labour being across by most of the third world countries have many serious social, economic and political dimensions. If we go through the history of developed countries, they had faced the problem of child labour exploitation in one way or another. The developed countries, such as UK, USA, Germany, Japan, France, Sweden, Portugal, Cyprus, Belgium and Malta also had a serious child labour problem until less than fifty years ago. (Pradhan, 1995)

Historically, the problem of child labour first appeared in the 16th century. This was further expanded in different forms and areas in the 17th century and children were further exposed to high risk areas in the 19th century. In Germany, France and the UK, the problem of child labour was obvious in factories, Cotton mills, glass and match making and brick kilns, where as in Norway and Sweden, the problems existed in farming, herding and fishing. In France, a Welfare Act for child labour was introduced in 1841 and 1853, the Government of Germany introduced the first law regarding the health and safety of children and trade unions in Europe began to raise the issue of child labour as

parts and parcel of their movement. However, the implementations of laws were very poor (UNICEF, 1998)

The children in many countries in Asia share the common pain and problems of child labour in their every sector. Statistics have revealed that almost half of the world's child labour problems exist in South Asia. Because of growing poverty, famine, unfair economic relation and social justice, the children of this region are forced to take major burden for survival. Despite many national, regional and international commitments to combat child labour, the situation of children in the SAARC region is far from satisfactory (CWIN, 1998)

Dhital, (1993) raised the issue of bonded child labour in the *Kamaiya system*. The word "*Kamaiya*" basically means a hired worker who is given some remuneration for his labour. But in practice, the word has a much more maligned meaning. The *Kamaiya* system prevailing in the western region of Nepal is perhaps the worst form of enslavement. The key factor in the *Kamaiya* bonded system is a loan called "*saunki*". Unable to maintain their families *Kamaiya* take loans from their households, indenting them not only for their whole lives but for generations to come. They are subject to inhuman behavior because they are basically illiterate, sincere, weak and even ill.

Chhetri, (2000) has studied about the child workers employed in hotels, restaurants Bhattis, shops and small Industries of the Walling Municipality in Syanja district. The study showed that poverty and illiteracy are the dominant reasons for child existence in Syanja. Majority of children are found to migrate from the surrounding villages and reason behind their migration is their parent's suggestion and research for better job. Among the migrant children boys have the majority while Ethnically Magar's have the dominant. Regarding their parental status 58 percent have both father and mother alive. Similarly more than half children belong to large family size with 5-7 members. Most of the children are involved in unskilled work. It is also found that majority of employer and parents of child labourer are not aware of labour act and children and thus, they perceive nothing wrong about child labour.

Shrestha, (2001) has studied about present national level estimates of various type of child working in Nepal on the basis of nationally representative sample survey, Nepal labour force survey 1998/99 conducted by CBS based on ILO standard total estimated child population of 4.2 million aged 5-14 years , 2 million are economically active. The participation rate during 1998/99 is 40.9 percent while remaining 45 percent are attending school and rest 14.1 percent are idle. Idle are those who are neither engaged in any kind of economical activity nor are they attending schools. Economically active children by sex reveal that the male participation rate is lower than that of female. Absolute number and incidence of working children are much higher in rural areas than in urban area. Majority of children are involved as unpaid employee while very few are as paid employee. Seasonal participation rate is high in rainy seasons followed by dry and winter season. The study also shows the increasing trend of child labourer.

Gurung, (1998) has studied about the migrant working children in Kathmandu Valley. His study covered 303 migrant children aged 5-17 working in cities of Kathmandu Valley in the various sector. In this study he attempted to explore for children's leaving of their home at early ages including the forms of labour they enter into. Insufficient or no food and land in the origin, lack of job, domestic violence and dislike of village life are identified as the main reasons behind migration of children in the cities. In other words, poverty in the rural areas is the main factor of child migration.

Banskota, (1992) has studied that there were three types of children engaged in labour domestic servants, street children and children employed in industries. None of these three categories of children had any option but to live in difficult circumstances those children employed as domestic servant's works for even 12-20 hours/day and all types of work in household. Those employed in industries have an even harder life than the domestic servants. Though the street children are more independent, this has led them to indulge in smoking, drinking and even stealing. All this have adverse effects on society. The poverty is the major factor that has increased the number of street children in the urban centers of Nepal.

2.2. Review of the Related Studies

The most popular field among the child labour to be engaged in Nepal is hotels, restaurants and teashops industry. There are more than 20,000 registered and non registered teashops/restaurants in Nepal, employing more than 70,000 child workers throughout the country. All of these working children have been living in bleak and deplorable conditions, suffering unhygienic working environments and long working hours at low pay (CONCERN, 2003).

Forms of Child Labour in Nepal

Child labour can be found in many forms. Fifteen main areas of work have been identified, as follows.

1 Factory /Industry

Carpet- mostly child migrants work in this area, the children work an average of 15 hours a day, with only one hours break, 7 days a weeks. The conditions in which the children work are usually poor. Damage to health and injuries are common place. Other forms in this category include Garments /Textiles, handicrafts, printing press, welding, confectionery, bread making, making matches, pottery and brick kilns.

2. Mines and quarry

This includes children working in stone quarries and coal mines, as well as in the mining of magnetite.

3. Plantation

Children are involved planting a variety of different substances, such as sugar cane, tea, tobacco, millet, maize and rice.

4. Domestic Service

Children do very domestic tasks, including working in the kitchen, doing the laundry and cleaning. Domestic service, being invisible compared to other works makes children more vulnerable to abuse.

5. Shop keeper/ Service

This includes the selling of sweets, working in teashops and in restaurants and bars.

6. Transportation

Work such as conductors, ticket collectors on buses and tempos, as well as rickshaw drivers. Children from outskirts of urban areas are attracted to becoming conductors in tempos or micro buses

7. Porters

Including street porters, tourist or trekking porters and domestic porters there are generally two types of porters, long distance porters who carry loads in rural area and short distance porters who work mainly in urban areas such as in bus parks.

8. Construction Works

Children work to build roads, houses bridges and sewerage systems.

9. Street Work

Street vendors of newspapers and other items, rag pickers, beggars street singers, shoe shiners/makers. Street children are more prone to becoming drug addicts, to contracting HIV/AIDS, as well as to becoming exposed to a world of crime.

10. Commercial Sexual Exploitation

This includes child prostitution, middlemen or contractors/pimps, work in Massage Parlors, Cabin Restaurants, discos and Dance Bars. Many children are trafficked from Nepal to India, to work in the commercial sex industry.

11. Bonded Labour

However, the Kamaiya system, is abolished in July 2000, the bonded labour continues to influence many children's lives. There are also many debt-bounded labourers, who tend to work in places like carpet factories, households, restaurants, brick kilns and so on.

12 Migrant Child Labour

Often, children migrate from rural to urban centers such as Kathmandu, Bhatnagar or Narayangadh with the aim of finding employment.

13. Refugee Children

Children are Tibetan refugees often work in carpet factories, frequently in Tibetan areas of the country or capital city, such as in Kathmandu's Bouddha and Lalitpur's Ekantakuna. Many Bhutanese refugee children try to find work in Eastern Nepal.

14. Circuses/ Music industry

Many children work in circuses. A new phenomenon is the trafficking of children to work in circuses in India. Children also work in puppet or magic shows, or in commercial music programs.

15. Publicity and Advertising

Such as in TV advertisements, radio programs, newspapers and magazines.

Causes of Increasing Child Labour

Everybody knows that, main causes of child labour are poverty. Illiteracy and lack of awareness are the other causes of child labour. Many parents who have had no education and skilled training themselves do not see the need for their children to have such opportunities. Some parents see child labour as useful apprenticeship for their children to acquire knowledge and experience, which will help them as adult workers. Some parents prefer their child working to alternatives, especially when school is not seen as a viable investment for further gains. (UNICEF, 1995).

The International Programme on the Elimination of Child labour (IPEC) of ILO (2001) in its fact sheets for Nepal states the principal cause to increase child labour is acute poverty. At it also mentioned that there are number of other factors which also contribute to it are as follows:

- a. Lack of access to education for children
- b. Employer-worker relationships in rural areas
- c. Family problems such as violence of significant changes in the family structure caused by death or remarriage of a parent (Nepalese culture does not favor the adoption of step-children).
- d. Inadequate enforcement of labour and criminal laws.

- e. Social customs, values and attitudes and attribute a very low status to children end.
- f. Lack of education of parents.

Due to above mentioned reasons or causes child labour is widespread phenomenon in Nepal.

Problems of Child Labour

The pioneer institution for the right of the child CWIN, shows its study report that working children in Nepal comes across the following problems (Pradhan, 1995).

- a. Too young to work/ inappropriate work for children
- b. Health hazards working conditions
- c. Low wages and long working hours
- d. Work at night
- e. Economic exploitation by adults
- f. Lack of basic education opportunities
- g. Separation from parents
- h. Abuse and neglect
- i. Physical mental and emotional exploitation
- j. No rest or entertainment
- k. Not having their basic needs met
- l. In appropriate child rearing atmospheres
- m. Lack of adequate parental love care and understanding
- n. Lack of social security and attention
- o. Violations of child's right laws

Micro Bus Transportation and Child Conductors

The micro-bus a four wheel vehicle or small type of passenger van. Now, the micro-buses are very popular and major transportation means in the capital city, carrying people to and from various destinations. That micro bus is the replacement of the Vikram Tempo. After the removal of Vikram Tempo from Kathmandu valley, large numbers of micro-bus were entered and still this process is going on. According to the data of Department of Transport Management Ekantakuna, Lalitpur, 902 micro buses had been recorded till 2003/04 in Bagmati zone. Conductors are mainly boys under the age of 18 years. These boys are not registered under the micro-bus transportation workers union and are not recorded as an organized labour.

According to the CRC (2000), there were 300 child workers in Tempos and Micro buses on the Kathmandu valley.

The children who are working as conductors in tempos and micro-buses most of them spent their night in the vehicles and suffer various health problems (CWIN, 20000. the report brought by CWIN 84 % of child workers are suffering from eyes diseases, 82 percent from headache nausea. At such a tender age a considerable number of these child workers were found addicted to alcohol and smoking (CWIN, 1998).

Suwal (1997) has estimated that about 2.6 million children in Nepal regularly work which is 41.5 percent of the total children aged 5-14 years 26.7 percent i.e. 1.7 million participate in the economic activities. The proportion of working rural children (43.3%) is just double than corresponding figure for urban children (23%). The higher work participation rate of children is found in mountain zone (52.2%), western development region shows the lowest work participation rate was as the mid-western region shows the highest rate.

According to the CBS (2001), there are 11.5 million children below the age of 18 of whom an estimated 2.6 million are child labourers. Among these, the number of children involved in hazardous sectors as claimed by ILO is as follows:

- a. Child Porters 46,000
- b. Domestic Child Workers 56,000
- c. Rag Pickers 4,000
- d. Child Labourers in Carpet Factories 7,700
- e. Bonded Labourers 17,000
- f. Trafficked Children 12,000
- g. Stone Quarry Child Workers 32,000
- h. Restaurant Child Workers 71,700

The above literatures suggests that child labour are not, of course, limited to developing nations. They occur wherever poverty exist. Child labour in any form is a sign of underdevelopment. Unless children are not freed form labour, the overall development of a nation can not be expected. Though Nepalese law made a provision of prohibiting the child labour, there still remains the surmounting problems child labour. The Government has not given any strong directive and guidelines to the local administration to check-up the increasing problems of child conductors. We have no clear law against child abuse, child marriage, child trafficking and child workers. The priority has not given to the field work rather than seminars conferences and paper work. They are working as conductors in micro buses because of their compulsion. Child conductors in Nepal are among the major victims of child abuse and neglect. On the micro buses they run into a variety of different problems, such as traffic police harassment , repression by street gangs, accidents, street violence and exposure to substance and drug use as well as Sexual exploitation. They are deprived from all types of child rights which can creates problems in ht path of establishments of new Nepal. Thus, for a civilized society or nation elimination of child labour is sine qua non.

Chapter Three

Research Methodology

3.1 Research Design

The study was carried out on the basis of explanatory and descriptive research designs because the study mainly focuses on to investigate the socio-economic condition of the conductors. Moreover, the study has tried to find out the contextual factors leading them to enter into conductors and their working condition and environment, which is the specific objectives of the study. In order to fulfill these objectives information were collected from the related field survey. The data which were quantifiable was explained literally. Analysis of data has been made by generating the tables of averages and percentages.

3.2 Nature and Sources of Data

Both the primary and secondary data were used as the major sources of information for this study. The qualitative and quantitative data have been collected and used in this study.

3.2.1 Primary Data

This source includes questionnaires, interview, and key- informant interview conducted during the month of November 2006. This research work was completed with the help of these methods of primary source, which are emphasized in the study of conductors.

3.2.2 Secondary source

Secondary source is another important source for data collection. In this source, the data were obtained from different published and unpublished literatures. Data were collected from NGOs, INGOs, Tribhuvan University Central Library, Various Books, Magazines, internet etc.

3.3 Universe and Sample Size

The research has been conducted in the micro buses of Lagankhel, Jorpati, Kalanki and Sundhara, on Kathmandu Valley, which are hot spots of micro bus. The required data for the study purpose were collected with 50 child conductors who were working as conductors in 50 micro buses of above mentioned areas. Purposive sampling method was used to collect the data for the study.

3.4 Data Collection Techniques

The following techniques were used in this research purpose.

3.4.1 Interview

This method was used to know the concept of child labours about their working conditions, family background and their socio-economic condition. This method has become helpful to know the facts that were not possible by questionnaire and observation methods. This method was used to child labour to gather the information for the study purpose.

3.4.2 Observation

Observation is a direct way of gathering information by observing the events as they occur. It is a purposeful, systematic and selective way of watching and listening to an interaction or phenomena as it takes place. In this research work, also researcher has used this method to collect the qualitative primary data. This method is used to study the conductors behavior towards passengers, micro bus owners and drivers' attitude towards conductors and passengers relation with conductors.

3.4.3 Interview with Key Informants

Informal discussions focusing on the relevant aspects of the problems were held with the key informants. Many micro bus drivers and passengers were included in the data collection to bring out facts about conductors.

3.5 Data Analysis and Interpretation

The gathered data has been categorized, tabulated and analyzed using different methods. The quantitative data is analyzed using a standard computer programme, like Excel. Statistical tools such as frequency, average, percentage etc have been used for the analysis of data. Qualitative data has been analyzed so that the real situations can be mirrored.

Chapter Four

Analysis and Interpretation of Data

4.1. Background Characteristics of Conductors

The children working in micro bus are “conductors”. Commonly they are called “Khalasi. Before findings out their present life status and other details, it is important to understand their background characteristics in the proper context.

4.1.1. Place of Origin

Three groups of conductors have been identified. The first group is those from within the valley, which consist of three districts namely Kathmandu, Bhaktapur and Lalitpur. The second group is those from adjoining districts, which consist of four districts Makawanpur, Dhading, Kavre and Sindhupalchok. The third group is from other districts.

The table 1 shows that majority of the conductors 68 percent are from adjoining districts. Similarly 26 percent are from other districts and only 6 percent are from within the valley.

Table 1
Distribution of Respondents by Their Place of Origin

Place of origin	Frequency	Percent
Makawanpur	8	16
Dhading	9	18
Kavre	10	20
Sindhupalchok	7	14
Total	34	68
Jhapa	3	6
Chitwan	6	12
Udayapur	4	8
Total	13	26
Within valley	3	6
Grand Total	50	100

Source: Field Survey, 2006.

The table 1 shows that 68 percent most of the conductors have arrived in the Kathmandu valley from the adjoining districts 16 percent are from the Makawanpur districts, 18 percent from the Dhading, 20 percent are near from the Kavre and fourteen percent from the Sindhupalchok districts. 26 percent are from the others districts, and only 6 percent are from with in the valley.

4.1.2. Caste/ Ethnic Composition

The respondents are from the various castes and ethnic groups. The table 2 shows that the castes and ethnic groups of respondents.

Table 2
Distribution of Respondents by Their Castes/ Ethnic Composition

Caste/ethnic group	Frequency	Percent
Brahman	9	18
Chhetri	12	24
Tamang	6	12
Magar	4	8
Gurung	5	10
Lama	3	6
Dalits	3	6
Rai	2	4
Limbu	3	6
Newar	3	6
Total	50	100

Source: Field Survey, 2006.

The table 2 shows that 24 percent are from the Chhetri group, 18 percent from the Brahman, Lama Dalits Limbu and Newar is in the same 6 percent. 12 percent Tamang, 8 percent Magar, and Gurung are 10 percent only Rai are 4 percent. The table 2 clears that majority of the micro boys are from Chhetri, Brahman, and Tamang.

4.1.3 Age Structure

The age under the 14 years is a very important period of child development but some children under the age of 14 are compelled to work as conductors, the table 2 shows that the age structure of conductors.

Table 3
Distribution of the Respondents by Their Age Group

Age in Years	Frequency	Percent
10	1	2
11	3	6
12	6	12
13	16	32
14	24	48
Total	50	100

Source: Field Survey, 2006.

The table 3 shows that most of the conductors working in micro bus are age of 14, 48 percent, 32 percent conductors are age of 13 years. 12 percent are in the age group of 12 years, 6 percent and 2 percent are the age group of 11 and 10 respectively.

4.1.4 Family Type

In general, family means a group of people living together who have a blood relationship and who share social and cultural ties. It is a relation of existing in the society. The family structure is usually divided into two categories joint and nuclear. The joint families are more based on the blood ties and similarly the nuclear family on marital ties. Nuclear family consist only mother father and their children but in joint family consist four family like including grand father, grand mother and others. In this research also found that most of conductors are involving from nuclear family background.

Table 4
Distribution of Respondents by Their Family Composition

Family Type	Frequency	Percent
Joint Family	4	8
Nuclear Family	46	92
Total	50	100

Source: Field Survey, 2006.

The table 4 shows that 92 percent respondents have a nuclear family and 8 percent live in joint family. It means that entry of conductors in micro bus is marginally high from nuclear family then joint family.

4.1.5. Family Size

The family is the most important group in society. Family is an effective institution in the process of child socialization. It is also that the child develops its basic attitudes towards society.

Table 5
Distribution of Respondents by Family Size

No of Family Members	Frequency	Percent
2 members	2	4
3 members	11	22
4 members	18	36
5 members	9	18
6 members	5	10
7 members	1	2
8 members	4	8
Total	50	100

Source: Field Survey, 2006.

Table 5, shows 4 percent respondents having 2 members in their family, 22 percent respondents having 3 members, 36 percent respondents having with 4 members, 18 percent respondents having 5 members, 10 percent respondents having 6 members, 2 percent respondents having 7 members and only 8 percent respondents have a joint family of 8 members.

4.1.6. Educational Status of Conductors

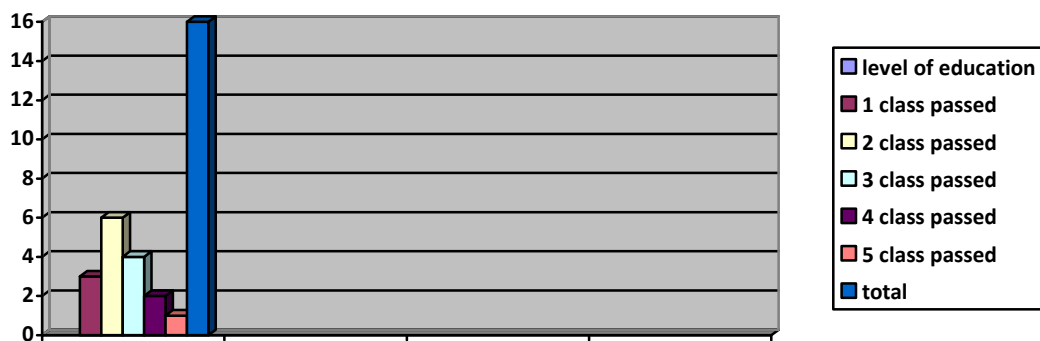
Education gives to child alternative sources of income as well as a way of living. To the extent that a child has alternatives, he would choose one of the better professions, not once which make his face the hatred of the society. Education is very important to the child labour for obtaining knowledge and skills.

Table 6
Distribution of Respondents by Their Educational Status

Literacy Rate	Frequency	Percent
Literate	16	32
Illiterate	34	68
Total	50	100
Level of Education		
1 class passed	3	18.7
2 class passed	6	37.5
3 class passed	4	25
4 class passed	2	12.5
5 class passed	1	6.2
Total	16	100

Source: Field Survey, 2006.

Literacy Rate



4.1.7. Interest for Schooling

According to micro boys, they have dropped their school due to many reasons. Most of them are never joined school and some of them are left schooling because of failure in the examination and some have not interested at that time.

Table 7
Distribution of Respondents by Interest for Further Education

Interested for further study	Frequency	Percent
Interested	18	36
Not interested	32	64
Total	50	100
Causes of unwillingness for further study		
Dislike to study	24	75
No guarantee of job	6	18.7
Over age	2	6.2
Total	32	100

Source: Field Survey, 2006.

The table indicates that majority of child conductors are not interested for further study. Out of total 50 respondents, 64 percent conductors are not interested in going to school again only 36 percent are interested for further study.

4.1.8. Parental Status

Generally in poor and large families willingly or non-willingly parents have not adequately carried out their responsibility of taking care of their children and this parental negligence seems to be the factor behind child labours. It is very important to know about the parental status of those children working in the micro buses. The table 5 shows that the parental status of the respondents

Table 8
Distribution of Respondents by Their Parental Status

Parents	Frequency	Percent
Both father and mother alive	31	62
Only mother alive	4	8
Only father alive	3	6
Step mother	8	16
Step father	4	8
Parent less	2	4
Total	50	100

Source: Field Survey, 2006.

Table 8 present that 62 percent have both parents are alive and 14 percent have only single parents. 4 percent micro boys have no parents.16 percent have step mother and 8 percent have step father. The data is clear that the proportion of conductors, who have stepfather and stepmother, is greater than the single parents and parentless.

4.1.9. Causes of Living Home

When the micro boys were asked about the question “why you left their home” they gave many reasons for leaving home. Collectively these factors are related to poverty, family problem, attraction of the city and many others

Table 9
Distribution of Respondents by Their Causes of Leaving Home

Causes of leaving home	Frequency	Percent
To earn money	29	58
Negligence of parents	5	10
No chance for study	3	6
To much work at home	4	8
Others	9	18
Total	50	100

Source: Field Survey, 2006.

4.1.10. Parental Education Status

The education of parents is the most important factors for career development of their children. The illiteracy of parents and ignorance of parents perhaps the main reason for wide spread nature of child labour.

Table 10
Distribution of Respondents by Their Parental Education Status

Literacy of parents	Frequency	Percent
Literate	15	30
Illiterate	26	52
Don't know	9	18
Total	50	100

Source: Field Survey, 2006.

Among the conductors, it is found that 30 percent of their parents are literate. The data clears that high percentage 52 percent of micro boys parents are illiterate and 18 percent respondents do not know either their parents are literate or literate

4.1.11. Facilities Available in The Village

Facilities available in the village also determine a child to be a worker or not. If the facilities such as school, health post, telephone, electricity, post office, information sectors and piped water supply are available in the villages than the chances of child labours will be low. So the data is clear that the facilities available in the villages of the conductors.

Table 11

Distribution of Respondents Having Different Facilities in the Village

Facilities	Frequency	Percent
School	43	86
Health post	13	26
Piped water supply	8	16
Electricity	21	42
Telephone	23	46
Post office	4	8
Total	50	100

Source: Field Survey, 2006.

Percentage total may exist 100 due to multiple response.

Among the conductors, only 86 percent have school facilities in their village. The other an important facility such as health post is 26 percent, 16 percent have piped water supply, 42 percent electricity, 46 percent and 8 percent have telephone and post office respectively

4.2. Socio-Economic Condition of Conductors

4.2.1. Parental Occupation

The occupation of parent is also a determinant factor of their children's career. The table 11 presents the parental occupation of the conductors.

Table 12
Distribution of Respondents by Their Parental Occupation

Parental Occupation	Frequency	Percent
Agriculture	32	64
Wage labor	9	18
Merchant/shop	3	6
Service	2	4
Driver	4	8
Total	50	100

Source: Field Survey, 2006.

The table 12 shows that 64 percent of the total respondent's parents are engaged in agriculture. Where as few of their parents are engaged in wage labour, shop, service and driver 18 percent, 6 percent, 4 percent and 8 percent respectively.

4.2.2. Food Sufficiency at Home

Food sufficiency at home also plays an important role to be a child labor or not. The table 12 presents that the food sufficiency at home of the respondents

Table 13
Distribution of Respondents by Their Food Sufficiency at Home

Food sufficiency at home	Frequency	Percent
Yes	18	36
No	32	64
Total	50	100

Source: Field Survey, 2006.

The table 13 shows that most of the respondent have food problem at home. 64 percent respondents have no sufficient food at home. 36 percent have food sufficiency at home.

4.2.3. Earning Status of Conductors

The salary scale of conductors is very low in the proportion of their working hours a day. As informed by them majority of the conductors have been employed on daily wage basis and minority have been working in monthly salary basis.

Table 14
Distribution of Respondents by Their Daily Wages from Micro Bus

Daily wages in Rs.	Frequency	Percent
No money, only meal & clothing	3	6
Rs. 1- 20	6	12
Rs. 20-40	13	26
Rs. 40- 60	21	42
Above 60	7	14
Total	50	100

Source: Field Survey, 2006.

Among the conductors only 6 percent have no daily wages they used to get only meal and the clothing. 12 percent conductors used to get Rs.1-20, 26 percent used to get Rs.20-40, 42 percent used to get Rs. 40-60 and 14 percent used to get Rs. 60 and above per day.

Here, the table clears that, the wages of conductors is not equal although the work is same. The children, who get rupees more than 50 rupees, do not get the facilities of two times meal, but only one time or not, sometimes they can get two times meals per day.

4.2.4. Saving Pattern of Conductors

The wage of the conductors is very low some conductors have some savings. Here the question was asked to the respondents about saving, do you save money or not? If yes how much? It can be seen in the table 15.

Table 15
Distribution of Respondents by Their Savings

Particular	Frequency	Percent
Savings	14	28
Not savings	36	72
Total	50	100
Saving in Rs. Per month		
100-200	2	14.2
200-400	2	14.2
400- 600	7	50
Rs 600 and above.	3	21.4
Total	14	100

Source: Field Survey, 2006.

The table 15 presents that 28 percent respondents have savings and the majority of the conductors do not have savings.

4.2.5. Supports to the Family

Because of the poverty, most of the children are working as conductors in micro bus. Children who are working as a conductor in micro bus to help the hand to mouth problem of their family. It is very necessity to know their support to their family.

Table 16
Distribution of Respondents by Their Support to Their Family

Support to family	Frequency	Percent
Yes	18	36
No	32	64
Total	50	100
Supported amount (per month)		
Rs.100-250	6	33.3
Rs.250-500	8	44.4
Rs.500 and above	4	22.2
Total	18	100

Source: Field Survey, 2006.

4.2.6. Expenditure Pattern of Conductors.

The expenditure pattern of respondents differ form as per their income. Here the expenditure pattern of conductor children analyzed.

Table 17

Distribution of Respondents by Priority to Spend Their Income

Expenditure items	Frequency	Percent
Food	9	25
Clothing	12	33.3
Entertainment	6	16.6
Family requirements	4	9.1
Smoking and alcoholic	3	8.3
Others	2	5.5
Total	36	100

Source: Field Survey, 2006.

The table 16 presents among the 50 respondents only 14 respondents have some savings but 36 respondents have not savings, who have not savings. 33.3 percent have expenses on clothes. Other 25 percent expenses on food, 16.6 percent conductors used to go on entertainment (movie and musical function). Rest 9.1 percent, 8.3 percent and 5.5 percent conductors used to spend their income on family requirements, smoking and alcoholic and others(treatment, playing) respectively.

4.2.7. Causes of Being Conductor

Table 18 presents the main causes of being conductor of micro bus, which compelled them to be a child labour such as conductors.

Table 18
Distribution of Respondents by Various Reason of Being Conductors

Reason of being conductor	Frequency	Percent
Poverty	33	66
Arm conflict	7	14
Negligence of parents	5	10
Maltreatment of parents	2	4
Lobbying by friends	3	6
Total	50	100

Source: Field Survey, 2006.

Out of total 50 respondents, 66m percent of total micro boys are working as conductor due to the poverty. 14 percent are working by arm conflict. 10 percent are working by negligence of parents and 4 percent, 6 percent are working as a conductor due to maltreatment of parents and lobbying by friends respectively.

4.3. Working Condition and Environment

As a means of transportation micro-bus are very common in Kathmandu valley. Generally it is observed that working condition of conductors in these means of transport is very poor. In this regard the study on working condition and environment of conductors is considered to be very important. In this chapter includes, working hours, working duration, holidays, other facilities, job satisfaction, behavior of micro boys, health condition, behavior of passenger, problems as well as perception.

4.3.1. Working Hours

In the context of Nepal, according to “children act 2048” a child under the age of 14 shall not be employed in any work as labour. But in practice, children are engaged in different sectors such as hotel/restaurants, garment industries, transportation, carpet factories, mines and quarry, domestic work, etc.

Table 19
Distribution of Respondents by Their Working Hours Per Day

Working hours	Frequency	Percent
8-10	2	4
10-12	12	24
More than 12	36	72
Total	50	100

Source: Field Survey, 2006.

According to the table 19, majority of the conductors are working more than 12 hours per day. 72 percent respondents are working more than 12 hours per day in the micro bus. 24 percent are working 10-12 hours per day and rest only 4 percent are working 8-10 hours. Which are very far from the 47 article of children act 2048. According to the section of 47 of the mentioned act, children should not be employed more than 6 hours a day and 36 hours per week. It means the law is in our country Nepal is only in paper not in the practice.

4.3.2. Working Duration in Micro Bus

In the context of Nepal children are suffering from various problems due to lack of employment they used to contact to their relatives as well as friends for the job and if they get than they would start. After starting the job some have used to do for a long time and some have used to leave in a short time. Working duration of conductors is different it can be seen in the table 20.

Table 20

Distribution of Respondents by Their Working Duration in Micro Bus

Duration of work	Frequency	Percent
1-6 months	29	58
6-12 months	17	34
1 year and above	4	8
Total	50	100

Source: Field Survey, 2006.

Table 20 presents that out of total 50 respondents 58 percent respondents have been working as conductors since before six or less than six months. 34 percent respondents have working since before 6-12 months and 8 percent respondents have been working since before 1 year and above.

4.3.3. Holidays and Free Time of Conductors

Not only in the Nepal throughout the world there is a system of holiday for each and every employed at least once a week.

Table the researcher found that in the course of study there are no formal holidays for the conductors in micro bus. It is up to them to take holiday or not because whenever they do not feel like not going for work they do not go. During the field works, it was found that the conductors were working more than 12 hour per day.

Table 21
Distribution of Respondents by getting Holidays Once a Week

Getting holidays	Frequency	Percent
Yes	7	14
No	43	86
Total	50/50	100/100

Source: Field Survey, 2006.

Table 21 shows that majority of the conductors have not any holiday. Out of total 50 respondents, 86 percent respondents have not any formal holidays. But rest 14 percent respondents have been holiday once a week.

4.3.4. Facilities

In the course of study, it was found that the wages of the conductors was very low as the proportion of their hour. In this regard some questions were asked to the conductor, which is presented below.

Table 22
Distribution of Respondents by Getting Other Facilities

Other Facilities	Frequency	Percent
Yes	30	60
No	20	40
Total	50	100
Types of facilities		
Food	21	70
clothes	4	13.3
Shelter	5	16.6
Total	30	100

Source: Field Survey, 2006.

The table 22 shows that most of the conductors are getting other facilities such as food, shelter and clothes. But 40 percent respondents are not getting other facilities. Among the

total 30 respondents who have getting facilities, 70 percent respondents are getting facilities such as food, clothes 13.3 percent and shelter 16.6 percent.

4.3.5. Job Satisfaction

The opinion of respondents about their job satisfaction, whether they are satisfied with their job or not are presented below.

Table 23
Distribution of Respondents by Their Job Satisfaction

Satisfied	Frequency	Percent
Yes	42	84
No	8	16
Total	50	100
Causes of satisfaction		
Food and cloth	21	50
Facilities of Driving training	7	16.6
Not getting other proper job	6	14.2
Easy work	6	14.2
Traveling facilities	3	5.8
Total	42	100
Causes of mot satisfaction		
Heavy work load	4	50
Low wage and facilities	3	37.5
Maltreatment of driver	1	12.5
Total	8	100

Source: Field Survey, 2006.

Table 23 presents that; most of the conductors are satisfied with their job. Only 16 percent are unsatisfied with their present job. Among the 42 respondents 50 percent are satisfied due to availability of food and clothes. The other reason of satisfaction is facilities of driving training 16.6 percent, 14.2 percent not getting other job, and 14.2 percent easy work and 12.5 percent getting traveling facilities. This study indicates that the reason of not satisfaction. Out of total 8 respondents 4(50 percent) respondents said

that the causes of unsatisfied was heavy work load. 3(37.5 percent) low wage and facilities and 1(12.5 percent) respondents said that the maltreatment of driver.

4.3.6. Habits of Conductors

No human being has been burn with good or bad habits but social environment makes them either good or bad. If a child lives in a good social environment, a child will learn good habits and if he lives in bad circumstances he will learn some bad habits. In the course of study it was found that the social environment of conductors was not good. Here the table 24 presents the habits of conductors.

Table 24
Distribution of Respondents by Their Bad Habits

Bad habits	Frequency	Percent
Smoking tobacco	14	28
Alcohol	3	6
Playing cards	9	18
No bad habits	24	48
Total	50	100

Source: Field Survey, 2006.

Table 24 shows that 52 percent conductors have bad habits and 48% have good habits. Out of total 26 respondents who have bad habits 28 percent used to smoke and chew tobacco. 6 percent used to drink alcohol and 18 percent used to play cards.

4.3.7. Health Condition

Everybody knows that health is wealth. Good health is everything for every human being; if we are not healthy we can't do anything properly. In the field survey it is found that the health condition of conductors is poor. It was also found that they are ignoring their health problems as a minor one. Here the table 25 presents the health condition of conductors.

Table 25

Distribution of Respondents by Their Health Condition

Health condition	Frequency	Percent
Suffering from disease	22	44
Not Suffering from disease	28	56
Total	50	100

Source: Field Survey, 2006.

The table 25 presents, that 44 percent respondents are suffering from diseases that means their health condition is poor. But 56 percent respondents are not suffering from diseases.

4.3.8. Behavior of Passenger

In the working time conductors have to deal with different kinds of people. In this regard the researcher wanted to know about the behavior of passenger towards child conductors. The table 26 shows that the behavior of passenger towards child conductors.

Table 26

Distribution of Respondents by Their Passengers Behavior

Behavior of Passenger	Frequency	Percent
Good	33	66
Moderate	14	28
Bad	3	6
Total	50	100

Source: Field Survey, 2006.

The table 26 shows that, 66 percent respondents get good behavior from passenger 28 percent response their passenger behavior is moderate and 6 percent conductors get bad behavior from their passenger.

4.3.9. Problems of Conductors

Table 27 presents that the problems of conductors.

Table 27
Distribution of Respondents by Their Problems

Types of Problems	Frequency	Percent
Low wages	42	84
Don't get free time	39	78
Uncertainly job	12	24
Risk of an accident	6	12
Sickness	6	12
Passenger's behave	3	6
Total	50	100

Source: Field Survey, 2006.

Percentage total may exist 100 due to multiple response.

The table 27 presents that, 84 percent respondents had suffered form the low wages problem, 78 percent respondents had suffered form the don't get free time, 22 percent suffered from uncertainly job, 12 percent from risk of an accident 12 percent form sickness and 6 percent had suffered form the passenger's behave problem.

4.3.10. Perception about the Profession

Perception determines the continuation and discontinuation of the profession. So in the field survey, respondents were asked about the continuation of this profession. Here table 28 clears that the perception about this profession of the respondents.

Table 28
Distribution of Respondents by Perception to about Their Profession

Want to Continue	Frequency	Percent
Yes	40	80
No	10	20
Total	50	100

Source: Field Survey, 2006.

The table 28 clears that, 80 percent respondents are interested positively towards their present profession and only 20 percent has negative perception it was found that among the 40 respondents, some were interested to continue this profession in the form of driver and some were interested to continue this profession of mechanics, owners, conductors.

4.3.11. Accident

Conductor job is not a risk free job. There is more danger with children then an adult person in this job. The following table presents that the possibility of accident.

Table 29
Distribution of Respondents by Facing an Accident

Face an Accident	Frequency	Percent
Yes	11	22
No	39	78
Total	50	100

Source: Field Survey, 2006.

According to the table 29 shows that, 22 percent respondents had faced different kinds of accident, while working in micro bus. But 78 percent had not ever faced of accident.

4.3.12. Child should Work Opinion of Conductors.

Children are the source of inspiration and hope for society. Children are innocent, faultless and symbol of creativity. The table 30 shows, opinion of conductors towards child should work or not.

Table 30
Distribution of Respondents by Their Opinion towards Child Should Work or Not

Child should work	Frequency	Percent
Yes	9	18
No	26	52
Don't know	15	30
Total	50	100

Source: Field Survey, 2006.

The table 30 presents that the majority of conductors said that child should not work. 52 percent respondents opinions are child should not work. 18 percent respondents said that child should work and 30 percent have no idea about child should work or not.

4.3.13. Living Condition of Conductors

During the field survey, it was found that the living condition of the conductors were different which are presented in the table 31.

Table 31
Distribution of Respondents by Living Condition

Living condition	Frequency	Percent
With parents	15	30
With friends	10	20
With relatives	6	12
Owners house	5	10
With driver	14	28
Total	50	100

Source: Field Survey, 2006.

According to the table 31 among the different living condition 30 percent conductors are living With parents, 20 percent are living with friends, 12 percent with relatives, 10 percent with owners house and 28 percent respondents are living with driver.

Chapter Five

Summary Conclusion and Recommendations

5.1. Summary

Nepal is a country whose children are suffering. One such form of this suffering is child labour, which is not a new thing to this agriculture-dominated nation. The increase in child labour exploitation in Nepal is partly caused by the increasing marginalization among the rural population, landlessness, unemployment and unplanned urbanization. Nepal is one of the least developed countries in the world. The per capita income of Nepalese people is only US \$ 240. In Nepal poverty, illiteracy, unhealthy and unemployment are the common features which are affecting each and every sector of human lives including child, where children are compelled to work as labour. In every sector of Nepalese economy, children are employed as labour force. Since very beginning and this trend or process has been going on.

Here children are required to support their family or they are forced to leave their home and start work. Every sector of employments is not free from child labours and the tendency is growing gradually. However this study is based on general background characteristics and socio-economic status of conductors of age below of 14years, working in Micro bus in Kathmandu valley.

The present study is based on exploratory cum descriptive research design. Both primary and secondary data have been used and various techniques such as interview schedule, structured and unstructured questionnaire and non participant observation were applied to collect the required data for the study. In this study out of total micro bus conductors of Kathmandu valley 50 child conductors under the age of 14 years were selected for interview by using purposive sampling method. So this thesis covers the conductors of Kathmandu Valley only who have been working as child conductors in micro bus.

After analysis and interpretation of information various findings are derived.

The main findings of the study are summarized below.

- J Majority of the conductors were from adjoining district of Kathmandu Valley. 20% respondents were from Kavre district, 18% were from Dhading, 16% were from Makawanpur and 14% were from Sindhupalchok district.
- J Majority of the respondents were illiterate out of total 50 respondents, 34(68%) respondents were illiterate and only 32% were able to read and write.
- J The educational status of their parents was also very low because 52% were illiterate. 30% literate and 9(18%) don't know about their parent's educational status.
- J Majority of the respondents were not interested for further study. 75% of the respondents were dislike to study was the main causes of unwillingness for further study. 18.7% respondents said that no guarantee of job and 6.2% said that over age were the causes of unwillingness for further study.
- J The Health condition of the conductors as well as not well because they should always work in vehicle and road. So they were suffering from different disease during the working in micro bus.
- J The numbers of family members of respondents, 4 members were 36% and 5 members were 18%.
- J Majority of the respondents had not sufficient food in their home.
- J Majority of the total respondent's parental occupation was agriculture. 64% respondent's parents engaged in agriculture.
- J Poverty was the main reason of being conductor. Because of 66% respondents had main reason of being conductors was poverty.

- J The wages of the conductors was very low in the proportion of their working hours a day. Out of total 50 respondents 42% were able to earn 40-60 rupees. Among them 26% were earn 20-40 rupees, 14% were earn rupees 60 and above and 12% conductors had only meal and clothes instead of wages.
- J Majority of the respondents working hours was very high. Because of 72% were working more than 12 hours per day.
- J Conductors have to do all kinds of work such as calling passenger, cleaning vehicle and even domestic service with whom they live.
- J Majority of the respondents have no any proper holiday. The only leisure time is while they wait for the next trip at the station.
- J Majority of the respondents, due to the availability of the facilities 84% respondents were satisfied with their present job.
- J Majority of the respondent's causes of satisfaction were getting facilities such as food and cloth, facilities of driving training not getting other proper job and easy work. But 16% respondents were unsatisfied due to heavy work load, maltreatment of driver and low wages
- J Majority of the respondents were living with parents, driver and friends.
- J Majority of them 66% respondents were getting good behavior from their passenger.
- J Most of those children expressed as their aim to be a driver in future and rest want to be mechanic and continuation of this conductor profession.
- J Majority of 80% respondents were interested to continue to this profession some were interested to continue this profession in the form of driver and rest were interested to continue this profession in the form of mechanic and conductors.

5.2. Conclusions

Child labour is an emotional and controversial issue. In recent year the issue of child labour is becoming one of the burning issues. In the context of Nepal, especially after the restoration of democracy in 1990 the issue of child labour is becoming as a burning issue, both in mass and academic circles. Efforts have been made by GOs, NGOs, INGOs and international organizations including ILO and UNICEF of create awareness about the problem of child labour. Most of these organizations believe in gradual elimination of child labour.

Here, the study was conducted about the working children in micro bus as a conductor. Based on the findings of this study, the following conclusion is below.

-) The educational status of conductors is poor. And they are also not interested for further study.
-) The main reasons of being micro bus conductor are poverty and arm conflict.
-) The conductors are not getting any other facilities such as medical check up, schooling free time for enjoy etc.
-) Most of the children's parents are illiterate. So it is clear that children from the poor socio-economic family background are working as a conductor.
-) The adjoining districts of Kathmandu Valley which are far from the basic social institution and facilities such as school, health post, electricity, telephone piped drinking water supply and post office are the main sources of being conductors.
-) The health condition of conductors is also poor. Because of they should always work in vehicle and road. So they are suffering from different diseases. It is also found that they are ignoring their health problems as a minor one.
-) The present study shows that their existing working condition is not healthy. Because they should work more than 12 hours per day without taking rest. Their

pay is very low in comparison of market price. For them it is too hard to save same money for their family. Although they have some saving, it is nominal.

-) From the above it is also found that most of parents of conductor children are poor and are not able to provide education to their children thereby sending them to school. So it is cleared that the present socio-economic condition of micro boys is poor.

5.3. Recommendations

The following recommendations have been given for the welfare of child labours as follows:

-) The government, NGOs and INGOs should launch the effective programme for poverty alleviation in the rural areas immediately.
-) Every basic institution and facilities such as school, health post, electricity, telephone, piped drinking water and post office should be provided in all the rural villages.
-) The working condition should be fixed by government through enforcing laws for the children under the age 14 years. The working hour also must be fixed and salary also be fixed by government and it must be implemented by the employer.
-) The government should launch an awareness campaign against the child labour to all over the country with a strong master plan management.
-) Health check up facilities should be provided by every employer.

5.3.1. Recommendations for Further Study

Despite the fact that the child labour issue is not new. The significance of the child conductors issue demands a lot of study, whereas there are only countable studies in Nepal. But these studies are not fulfilling the necessity of the present time due to the nature of problem observed in societies. Thus, there are many issues that require further study in societies. Further intensive studies can also be done on professionalization issues of the sex workers. Few of others could be as follow:

-) It heard that child labours are sexually exploited which was not focused while preparing this research so it is felt necessary to study sexual exploitation of child labours.
-) During the preparation of this thesis health /hygienic condition of child labour was not much focused, so a study of their health/hygienic conditions is felt essential.

Bibliography

- Banskota, A. (1992). Bal Majdoor Samasya: Samadhan kahile? (When the problem of child labour will be solved) *Madhuparka, Vol No. 4, August*. Gorkhapatra Prakashan: Kathmandu.
- CBS (Central Bureau of Statistics). (1992). *Statistical year book of Nepal: National report*. NPC/HMG, Kathmandu: Central Bureau of Statistics
- Chhetri, C. B. (2000). *Migrants of child labour in Nepal: A case study of migrant child labourers in Walling Municipality*, Unpublished Dissertation, Central Department of Geography, Tribhuvan University, Nepal.
- CWIN (Child Workers in Nepal). (1995). *Study on Tempos Conductors boys in Kathmandu Valley*, Kathmandu: CWIN.
- CWIN/UNICEF (Child Workers in Nepal / United Nations International Children Educational Fund). (1995). *Child labour in Nepal vol-1*. Kathmandu: CWIN.
- CWIN (Child Workers in Nepal). (1997). *An Overview of the Child Labour in Nepal*, Kathmandu: CWIN.
- CWIN (Child Workers in Nepal). (1998). *State of the right of the child, vol-25*, Kathmandu: CWIN.
- CWIN/UNICEF (Child Workers in Nepal / United Nations International Children Educational Fund). (1998). *Child labour in Nepal, vol-3*, Kathmandu: CWIN.
- CWIN (Child Workers in Nepal). (1999). Voice of child workers issue No.28, Kathmandu: CWIN.
- CWIN (Child Workers in Nepal). (2000). *Bal Sarodar, Vol-38*. Kathmandu: CWIN.

- CWIN (Child Workers in Nepal). (2000). *Far away from Home. Survey study on child migrant workers in the Kathmandu valley*. Kathmandu: CWIN.
- CWIN (Child Workers in Nepal). (2003). *A Situation Analysis of Child Sex Tourism in Nepal, Kathmandu Valley and Pokhara*: CWIN.
- Gurung, Y.B., & Hamal, P. (1998). *Migrant working children in Kathmandu Valley*, Reports submitted to CWIN: Kathmandu.
- HMG, (Human Majesty's Government). (1990). *The Constitution of the Kingdom of Nepal*, MOL/HMG, Kathmandu: Human Majesty's Government.
- ILO (International Labour Organization). (1994). *Action for Elimination of Child Labour*, Geneva: ILO.
- ILO (International Labour Organization). (2001). *Working for Nepalese children and overview of child labour related programs on Nepal*, Kathmandu: ILO.
- ILO/PEC (International Labour Organization Program on Elimination of Child Labour). (2001). *Situation of domestic Child Labourers in Kathmandu*. A rapid Assessment No. 3, Geneva: ILO.
- ILO-PEC (International Labour Organization Program on Elimination of Child Labour). (1996). *Child labour situation in Nepal, Report on Nepal's children*, Kathmandu: ILO-PEC
- ILO (International Labour Organization). (2001). *working to eliminate child labour Vol-36*, Kathmandu: ILO
- Pradhan, G. (1993). *Khaate (The Street Survivors) Problems and Prospects*, Voice of Child Workers Issue No. 19-20, Kathmandu
- Pradhan, G. (1994). *Dimension of the child labour problems in Nepal*. CWIN, Kathmandu: CWIN

- Pradhan, G. (1998). *An overview of the Child Labour in Nepal*. Kathmandu: CWIN.
- Sattaur, O. (1993). *Child labour in Nepal* .A report by anti slavery international and CWIN, Kathmandu: CWIN.
- Shrestha, A. (2001). *Child labour situation in Nepal*, unpublished Dissertation, Central Department of Population Studies, Tribhuvan University, Nepal.
- UNICEF (United Nations International Children Educational Fund). (1996). *Survey on children, 5-14 years old: A study on child labour situation in Nepal* Kathmandu: UNICEF.
- UNICEF (United Nations International Children Educational Fund). (1998). *Survey on children, 5-14 years old: A study on child labour situation in Nepal*. Kathmandu: UNICEF.
- Newspapers & Magazines:*
- Around 77,000 Child Labours in Nepal (2May, 2001). *The Kathmandu Post*, News Archive 2001. (Kathmandu ed.).
- Call to Free 400 Child Labours in Public Vehicles (16 march, 2001). *The Rising Nepal*, (Kathmandu ed.).
- Children Still Exploited. (23 Jan, 2001). *The Rising Nepal*, (Kathmandu ed.).
- Gov-ILO sign in deal to stop child labour (Aug, 2002). *The Rising Nepal*, (Kathmandu ed.).
- Plan to end child labour. (29 Nov, 2002). *The Himalayan Times*, (Kathmandu ed.).
- Violence against children. (2001, June 9). *Nepal Samacharpatra*, (Kathmandu ed.).
- Why the children? (221 29 Nov- Dec, 2002). *Nepali Times*, (Kathmandu ed.).

Appendix Questionnaire

1. Name of the Respondent:
2. Age: Sex:
3. Home address:

Family Background

101. What is your Family type?
 -) Nuclear
 -) Joint
102. What is your parent's occupation?
 -) Agriculture
 -) Small business
 -) Services
 -) Labours
 -) Others

103 How many members in your family?

104. Do you have sufficient food supply in your family?

Personal Information

201. How old were you while you entered as the conductor?
..... Years
202. What is your reason of being conductor?
 -) Poverty
 -) Negligence of parents
 -) Forcing by friends
 -) Arm conflict
 -) Maltreatment of parents
 -) Others

203. Why did you leave your village?

- To much work at home
- Negligence of parents
- No chance for study
- To earn money
- Others

204. Do you have Father and Mother?

- Father only
- Mother only
- Both alive
- No one

205. With whom you are living now?

- With parents
- With relatives
- With friends
- Others

206. Are you literate?

- Yes
- No

207. If yes, how much have you studied?

.....

208. Are you interested for study?

- Yes
- No

209. Why did you drop the school?

- Poverty
- Due to house hold work
- No schooling
- Others

210. What do you want to be in future?

- Driver
- Mechanic
- Others

211. Do you smoke?

- Yes
- No

212. Do you drink alcohol?

- Yes
- No

213. Do you use any kinds of drug?

- Yes
- No

214. Do you think that child should work?

- Yes
- No

215. What types of facilities having available in your village?

- School
- Health post
- Piped water supply
- Electricity
- Post office
- Telephone

Working Condition

301. How long have you been working here?

.....

302. How many hours do you work per day?

- 8-10
- 10-12
- More then 12 hours

303. Have you ever been sick since working here?

- Yes
- No
- If yes which disease?

304. Have you got an accident?

- Yes
- No

305. Are you satisfied with your present job?

- Yes
- No

306. How much money do you earn daily?

- Rs1-20
- Rs20-40
- Rs40-60

Rs60 above

307. Do you send money to your family?

Yes

No

If yes how much?.....month/year?

308. How do you spend your income?

Food

Clothing

Movies

Smoking and alcohol

Family requirements

Others

309. Do you get any facilities from your employer?

Yes

No

310. If yes what kind of facilities are you getting?

Study

Food

Cloth

Shelter

Others

311. Do you get free time?

Yes

No

If yes, when

312. How many meals do you have per day?

One meal

Two meal

Three meal

313. How do passengers behave with you?

Love

Shout

Abuse and Dishonor

Sympathy

Others

314. What are the problems associated with this profession?

Passengers behave

Low wages

-) Don't get free time
-) Other conductors behave
-) Others

(Thank You)