

GASTRO-INTESTINAL PARASITES OF RED PANDA (*Ailurus fulgens* Cuvier, 1825) AND LIVESTOCKS IN COMMUNITY FOREST OF ILLAM, NEPAL



SAJAN SHRESTHA

T.U. Registration No. : 5-1-37-3-2005

T.U. Examination Roll. No. : 21695

Batch : 2068/69

A thesis submitted in partial fulfillment of the requirements for the award of the degree of Masters of Science in Zoology with special paper Parasitology

**Submitted to
Central Department of Zoology
Institute of Science and Technology
Tribhuvan University
Kirtipur, Kathmandu
Nepal
September, 2015**

DECLARATION

I hereby declare that the work presented in this thesis has been done by myself, and has not been submitted elsewhere for the award of any degree. All sources of information have been specifically acknowledged by reference to the author (s) or institution (s).

Date:

.....

Sajan Shrestha

T.U. Registration No. : 5-1-37-3-2005

T.U. Examination Roll No. : 21695

Batch : 2068/069

RECOMMENDATION

This is to recommend that the thesis entitled "**Gastro-Intestinal Parasites of Red Panda (*Ailurus fulgens* Cuvier, 1825) and livestock in community forest of Illam, Nepal.**" has been carried out by Sajan Shrestha for the partial fulfillment of Master's Degree of Science in Zoology with special paper Parasitology. This is her original work and has been carried out under my supervision. To the best of my knowledge, this thesis work has not been submitted for any other degree in any institutions.

.....
Supervisor
Dr. Mahendra Maharjan
Associate Professor
Central Department of Zoology
Tribhuvan University
Kirtipur, Kathmandu, Nepal

.....
Co-Supervisor
Damber Bista
Program Manager
Red Panda Network
Kathmandu, Nepal

Date:

LETTER OF APPROVAL

On the recommendation of supervisor "**Dr. Mahendra Maharjan**" and co-supervisor "**Damber Bista**" this thesis submitted by Sajan Shrestha entitled "**Gastro-Intestinal Parasites of Red Panda (*Ailurus fulgens* Cuvier, 1825) and livestock in community forest of Illam, Nepal.**" is approved for the examination and submitted to the Tribhuvan University in partial fulfillment of the requirements for Master's Degree of Science in Zoology with special paper Parasitology.

Date:

.....

Prof. Dr. Ranjana Gupta
Head of Department
Central Department of Zoology
Tribhuvan University
Kirtipur, Kathmandu, Nepal

CERTIFICATE OF ACCEPTANCE

This thesis work submitted by Sajan Shrestha entitled "**Gastro-Intestinal Parasites of Red Panda (*Ailurus fulgens* Cuvier, 1825) and livestock in community forest of Illam, Nepal.**" has been approved as a partial fulfillment for the requirements of Master's Degree of Science in Zoology with special paper Parasitology.

EVALUATION COMMITTEE

.....
(Supervisor)
Dr. Mahendra Maharjan
Central Department of Zoology
Tribhuvan University
Kirtipur, Kathmandu, Nepal

.....
(Head of Department)
Prof. Dr. Ranjana Gupta
Central Department of Zoology
Tribhuvan University
Kirtipur, Kathmandu, Nepal

.....
External Examiner

.....
Internal Examiner

Date:

ACKNOWLEDGEMENTS

I would like to express my heartfelt gratitude to my supervisor Associate Prof. Dr. Mahendra Maharjan, Central Department of Zoology, T.U. for his supervision, guidance and invaluable suggestion throughout my study. I am equally thankful to my co-supervisor Damber Bista to arrange field activities and support for complete this study. I am thankful to our honorable Head of Department Prof. Dr. Ranjana Gupta, Central Department of Zoology, T.U. for her kind cooperation and support. I am grateful to all my teachers and all the staffs of CDZ, T.U., Kirtipur, Kathmandu, Nepal for their continuous aspiration and motivation.

I was very much thankful to the district office of forestry of Illam for the permission given to carryout this study in community forest of Illam. Hearty thanks to the forest gardian of the area specially **Mr. Arjun Rai** who gave me company whole field activities. I would also like to express special thanks to SHAHPCI to give information about study area and make schedule to conduct study.

The study could not have been successful without the financial support for sample collection under supported by collaboration of **Red Panda Network (RPN) and Resources Himalayan Foundation (RHF)**. So I would like to express my sincere gratitude to **RPN** and **RHF**.

I would like to express my deepest gratitude to my family and relatives for their support and inspiration in my whole academic career.

Last but not list I would like to acknowledge my friends specially **Mr. Bishnu Achhami** for his kind support throughout my dissertation work and all those persons who helped me directly or indirectly to complete this work.

Sajan Shrestha

T. U Registration No: 5-1-37-3-2005

Symbol No- 21695

Batch 2068/69

CONTENTS

	Pages
DECLARATION	i
RECOMMENDATION	ii
LETTER OF APPROVAL	iii
CERTIFICATE OF ACCEPTANCE	iv
ACKNOWLEDGEMENTS	v
CONTENTS	vi
LIST OF TABLES	ix
LIST OF FIGURES	ix
LIST OF PHOTOGRAPHS	x
LIST OF ABBREVIATION	xii
ABSTRACT	xiv
1.INTRODUCTION	1
1.1 Background	1
1.2 Red Panda (<i>Ailurus fulgens</i> Cuvier, 1825)	2
1.3 Gastrointestinal parasites in Red Panda	4
1.4 Livestock	5
1.5 Gastrointestinal parasites of livestock	6
1.6 Problem statement and justification	7
1.7 Objectives	7
1.7.1 General objectives	7
1.7.2 Specific objectives	7

2. LITERATURE REVIEW	8
2.1 Global scenario of gastrointestinal parasites of Red Panda and other wild carnivore	8
2.2 National scenario of gastrointestinal parasites of Red Panda and other wild ruminants	11
2.3 Gastrointestinal parasites of livestock	12
2.4 Parasite sharing between wild and domestic animals	14
3. MATERIALS AND METHODS	15
3.1 Study area	15
3.2 Materials	16
3.2.1 Materials for field	16
3.2.2 Materials for laboratory	16
3.3 Chemicals	17
3.4 Study design	17
3.4.1 Sample collection method	17
3.4.2 Preservation of samples	18
3.4.3 Sample size	18
3.5 Microscopic examination	21
3.5.1 Saline wet mount	21
3.5.2 Iodine wet mount	21
3.5.3 Concentration method	22
a. Differential floatation technique	22
b. Sedimentation	22
c. Egg cyst and larva size measurement	23
d. Egg, cyst and larva identification	23
3.6 Data analysis	23

4. RESULTS	24
4.1. Gastro-intestinal parasites of Red Panda	24
4.1.1. Protozoan parasites	24
4.1.2. Helminth parasites	24
4.1.3. Mixed infection in Red Panda	25
4.1.4. Intensity of parasitic infection	26
4.2 Gastro-intestinal parasite of livestock	27
4.2.1 Protozoan parasites	27
4.2.2 Helminth parasites	28
4.2.2.1 Nematode	28
4.2.2.2 Cestode and trematode	29
4.2.3 Mixed infection	30
4.3 Comparison of GI parasites in between Red Panda and livestock	30
4.3.1 Prevalence of protozoan parasites in between Red Panda and livestock	31
4.3.2 Nematode parasites in between Red Panda livestock	32
4.3.3 Comparison of GI parasites in between Red Panda and cattle	33
4.3.4 Comparison of GI parasites in between Red Panda and goat/sheep	34
4.3.5 Parasitic mixed infection in between Red Panda and livestock	35
4.4 Diameter of eggs/cysts of different GI parasites of Red Panda and livestock	37
5. DISCUSSION	44
6. CONCLUSION AND RECOMMENDATION	52
6.1 Conclusion	52
6.2 Recommendations	53

LIST OF TABLES

Table	Title of Tables	Pages
Table 1:	Population estimation of Red Panda in Nepal	3
Table2:	Proportion of faecal samples collected from Illam district	18
Table 3:	Prevalence of Protozoan parasite of Red Panda from Illam community forest	24
Table 4:	Intensity of infection of intestinal parasite in Red Panda	26
Table 5:	Prevalence of Protozoan parasites of Livestock from Illam community forest	27
Table 6:	Prevalence of Nematode parasites in livestock	28
Table 7:	Infection of cestode and trematodes on Livestock	29
Table 8:	Comparative analysis of GI parasites in between Red Panda and livestock	32
Table 9:	Prevalence of gastro-intestinal parasites in Red Panda and cattle	33
Table 10:	Prevalence of gastro-intestinal parasites in Red Panda and goat/sheep	35

LIST OF FIGURES

Figure	Title of figures	Pages
<u>Fig 1: Map of Nepal including Illam district showing study area</u>		16
Fig 2:	Prevalence of nematodes in Red panda	25
Fig 3:	Mixed infection on Red Panda	25
Fig 4:	Nematode parasites infection	29
Fig 5:	Mixed infection in livestock	30
Fig 6:	Comparison of GI parasites in Red Panda and livestock	31
<u>Fig 6:</u>	Comparative analysis of mixed infection in between	

LIST OF PHOTOGRAPHS

Photograph	Title of photograph	Pages
1.	Questioning with local people	19
2.	Scat of Red Panda	19
3.	Measuring the Red Panda scat	19
4.	Collecting of scat of Red Panda	19
5.	Collection of pellet of sheep	19
6.	Collection of dung of Cow	19
7.	Fresh and dry scat of Red Panda	20
8.	Yak in the habitat of Red Panda	20
9.	Defecating pellet by goats	20
10.	Cattle in the habitat of Red Panda	20
11.	Running the centrifuge machine	20
12.	Preparation of slide	20
13.	Microscopic observation of slide	21
14.	<i>Entamoeba</i> sp. in Red Panda	39
15.	<i>Entamoeba</i> sp. livestock	39
16.	<i>Eimerria</i> with Micropyle in Red Panda	39
17.	<i>Eimerria</i> with Micropyle in livestock	39
18.	<i>Eimerria</i> without Micropyle in Red Panda	39
19.	<i>Eimerria</i> without Micropyle in livestock	39
20.	<i>Balantidium</i> sp. in Red Panda	40
21.	<i>Balantidium</i> sp. in livestock	40

22. <i>Oxyuris</i> sp. in Red Panda	40
23. <i>Oxyuris</i> sp. in livestock	40
24. <i>Strongyloides</i> sp.in Red Panda	40
25. <i>Strongyloides</i> sp.in livestock	40
26. Larva of <i>Strongyloides</i> in Red Panda	41
27. Larva of <i>Strongyloides</i> in livestock	41
28. <i>Crenosoma</i> sp. in Red Panda	41
29. Hook Worm in Red Panda	41
30. Hook worm in livestock	41
31. <i>Trichostrongylus</i> sp. in Red Panda	42
32. <i>Trichostrongylus</i> sp. in livestock	42
33. Corticated egg of <i>Ascaris</i> in Red Panda	42
34. Corticated egg of <i>Ascaris</i> in livestock	42
35. Decorticated egg of <i>Ascaris</i> in Red Panda	42
36. Decorticated egg of <i>Ascaris</i> in livestock	42
37. <i>Trichuris</i> sp. in Red Panda	43
38. <i>Trichuris</i> sp. in livestock	43
39. <i>Moniezia</i> sp. in livestock	43
40. <i>Paramphistomum</i> sp. in livestock	43

LIST OF ABBREVIATIONS

µm	- Micrometer
CBS	- Central Beuro of Statistic
CITES	- Conservaton on International Treade in Endangered Species of Wild fauna and flora
D/W	- Distilled Water
DNPWC	- Department of National Park and Wildlife Conservation
et al.	- And his associates
GDP	- Gross Domestic Product
GIS	- Global Information System
GIT	- Gastrointestinal Tract
GoN	- Government of Nepal
ICF	- Illam Community Forest
ICIMOD	- International Centre for Integrated Mountain Development
IUCN	- International Union for Conservation of Nature
KBCA	- Kothi Bhir Community Area
Km	- Kilometer
mg	- milligram
ml	- mililiter
MoFSC	- Ministry of Forestry and Soil Conservation
NRB	- Nepal Rastra Bank
PHVA	- Papulation and Habitat Viability Assessment
PNHZP	- Padmaja Naidu Himalayan Zoological Park
R.N.P	- Rara National Park
rpm	- Round per minute
U.S.A	- United State of America
UK	- United Kingdom

- VDC - Village Development Committee
- WWF - World Wildlife Found

Abstract

Red Panda is endangered species of Nepal and its numbers are declining day by day. Present study was conducted to assess the possible parasitic sharing between Red Panda and livestock population sharing the same pasture land. A total of 55 fresh fecal samples were collected by using line transect method and opportunistically from the elevation range 2200 to 4800m, which includes Red Panda(14), Cow(20) , Buffalo(1) ,Yak(2), Horse(5), Goat(9) and Sheep(4) from Illam Community forest area of Nepal. The collected faecal samples were preserved in 2.5% potassium dichromate and microscopically examined using direct smear and concentration methods. Prevalence of protozoan and helminthic parasites were found to be 100% in Red Panda. Among the protozoan, Sporozoa (64.28%) showed highest prevalent followed by Sarcodina (57.14%) and Litostomatea (14.28%). Among the helminth parasites, seven types of nematode were identified in which *Oxyuris* were reported in all the samples followed by *Ascaris* (57.14%), *Trichostrongylus* (50%), *Strongyloides* (50%), *Trichuris* (42.8%), *Crenosoma* (42.85%) and Hook Worm (35.7%). Multiple infection (78.57%) was more common in Red Panda followed by triple infection (21.42%) and double and single infection were absent. In case of livestock, almost equal prevalence of both protozoan (82.92%) and helminth (87.82%) parasites were recorded. Coccidian (60.97%) parasites were more prevalence in livestock followed by Sarcodina (21.95%) and Litostomatea (7.31%). Besides protozoan, eight genera of helminth parasites were recorded which includes; *Oxyuris* (87.8%), *Ascaris* (60.97%), *Strongyloides* (53.65%), *Trichostrongylus* (41.465), Hook Worm (39.02%) and *Trichuris* (31.70%), among nematode; *Moniezia* (14.63%) among cestode and *Paraphistomum* (2.43%) among trematode. In case of mixed infection, multiple infections (73.17%) was more prevalence followed by triple (19.51%) and double infection (7.31%). Comparing the morphologically similar parasites, there were not statistically significant differences. However, some parasites were Red Panda specific and some were livestock specific.

1. Introduction

1.1 Background

Every animal is equally important in an ecosystem. Some of the species has already been extinct while some are listed in the critically endangered, vulnerable, rare, threaten, protected etc. in global and national status. Animals are generally lost from their natural habitat due to several reasons like; habitat loss, natural disaster, low food quantity etc. It is necessary to protect them in their natural habitat or to control their haphazard use by people, each country has wildlife conservation policy by establishing protected area such as national parks, wildlife reserves, conservation areas etc. In Nepal, there are 10 national parks, three wildlife reserves and six conservation areas. Most of the endangered, vulnerable and rare animals have been protected in the protected areas. Besides the protected areas, in many parts of the country forest has been owned by the community and has been protecting many wild animals.

In Illam, forest is being protected in the form of community forest. People use their community forest to continue their daily life. They mainly use forest for plantation of medicinal plants, grazing of livestock, to cut leaves and branches for firewood or fodder for cattle. Besides protection of medicinal plants and other, the community forest protecting several wildlife species including Red Panda.

Wildlife is getting declined due to several reasons. One of the important reason could be sharing the same pasture areas with the domesticated animals. Sharing the pasture land influence the sharing various dreadful diseases between them. People of Illam had made livestock shed in various inside the community forest which are the important habitat of wild animals including Red Panda as well. Choyatar Community Forest of Jamuna VDC and National Forest of Jamuna and Mabu VDCs of Illam of Nepal are also among them, where Red Panda has been recorded. The forests are also popular for high altitude medicinal plants.

Community peoples practice livestock grazing inside community forest showed that on the whole day, livestock grazed in forest and bring back to animal shed during night. In summer the livestock sheds were shifted at the high altitude to protect livestock from high temperature and shifted to the lower altitude during winter because most of the hills remain covered by snow.

1.2 Red Panda (*Ailurus fulgens* Cuvier, 1825)

The Red Panda (*Ailurus fulgens* Cuvier, 1825) is the one living species of family aeluridae (Shrestha 2015) and commonly called Cat bear, Panda bear, Lesser panda etc. In Nepal, it is commonly called “Habre”, in local languages “Naututoo” and “Pude Kundo” in different part of communities. There are two sub species of the genera that is *Ailurus fulgens fulgens* and *Ailurus fulgens styani*. *Ailurus fulgens fulgens* is smaller and lighter than *Ailurus fulgens styani*. Red Panda is an endemic and a flagship species in the Himalayan region (Roberts and Gittleman 1984) which threatened with extinction worldwide (Wang et al. 2008). It inhabits in the temperate zone at low temperatures (Yonzon 1989) in the countries of the Himalayan Mountain Range which includes Nepal, India, Bhutan, Myanmar and China (Roberts and Gittleman 1984). Red Panda is an arboreal, shy, nocturnal and solitary animal however sometime seen in a pair or group and travel a linear distance of 1.57 Km during breeding season and active only in the late in the afternoon and/or early evening hours (Yonzon and Hunter 1991a). The Red Panda resides in evergreen, deciduous, and mixed forests with dense bamboo covered (Roberts and Gittleman 1984, Wei et al. 1999, Choudhury 2001, Pradhan et al. 2001). Despite being a member of the order Carnivora, Red panda is a specialized herbivore with a low nutrient diet. More than 86% of its diet includes ringal bamboo (Pradhan et al. 2001, Yonzon & Hunter 1991), which has forced the animal to inhabit in narrow range of forest types and restricted geographic area (Yonzon 1989, Choudhury 2001, Pradhan et al. 2001b, Sharma and Belant 2009). Because of the specialized diet and narrow range of habitat, Red panda has been considered as an indicator species of ecosystem health in eastern Himalayan broadleaved and conifer forests (Yonzon et al. 2000). Present estimation of the population density and the total area of potential habitat suggest that the global population of Red Pandas are declining and exist currently < 10,000 individuals world wide (Wang et al. 2008). The IUCN classifies the Red Panda as vulnerable status, suggesting a likely extinction globally if conservation measures are not initiated soon (Wang et al. 2008) and by Convention on International Trade in Endangered Species of Wild Fauna and Flora (CITES) in its Appendix I (species threatened with extinction which are or may be affected by trade). In Nepal the National Parks and Wildlife Conservation Act, 1973 has defined this species as an endangered species (Jnawali et al. 2011) and suggested immediate research on identifying existing and potential habitat, and population status for its future conservation.

On the basis of habitat suitability index, Nepal is home to approximately 1.9% of total global population of Red Panda and 38% potential habitat of Red panda covered by protected areas where as remaining 62% by community managed and national forest but the most of the area of Nepal the population conservation of Red Panda is not known (DNPWC 2010). According to Population and Habitat Viability Assessment (PHVA 2010), 317 possible confirmed in 592.39 km² habitat and within 3244.52 km² including another potential habitat of 2652.13 km² the estimated population to be 582 individuals. Recently Red Panda has been reported from Khotang, Jajarkot and Kalikot district (Bista and Paudel 2015) but need to be confirmed scientifically.

Table 1: Population estimation of Red Panda in Nepal

S.N	Sub populations	Area (km ²)		Population	
		Confirmed	Possible	Confirmed	Possible
1.	Annapurnna-Manaslu	4.18	84.23	2	20.15
2.	Darchula				
3.	Dhorpatan	89.05	434.92	43	104.05
4.	Gaurishankar	45.17	114.15	22	27.31
5.	Kanchanjungha	111.91	160.76	67	48.13
6.	Khaptad	3.57	211.22	1	36.42
7.	Langtang	47.83	125.7	23	30.07
8.	Rara	55.63	1099.16	19	189.51
9.	Sagarmatha	73.71	150.96	44	45.2
10.	Sakhuwasabha East	101.88	119.01	61	35.63
11.	Sakhuwasabha West	59.46	152.02	36	45.51
	Total	592.	2652.13	317	581.98

Source: Population and Habitat Viability Assessment (PHVA), 2010

Currently, Red Pandas are believed to occur at low densities with a patchy distribution due to habitat fragmentation, loss of foraging habitat, human and livestock disturbances, poaching, and disease (Yonzon and Hunter 1991b, Wei et al. 1999, Choudhury 2001, Patterson-Kane et

al. 2009, Sharma and Belant 2009, Dorji et al. 2012, Sharma et al. 2014) while parasitic infection was the one of disease in Panda (Zhang et al. 2007). These are the most serious threats for population decline (Thomas 2002), and thus the loss of genetic diversity (Li et al. 2005, Wei et al. 1999).

1.3. Gastrointestinal parasites in Red panda

Gastrointestinal parasites are known to widespread in vertebrate animals. Parasitic investigation is important for management of animal and animal diseases in domestic and wild animals. Parasitic infection in animals as well as human negatively impact on body weight gain, quality of reproduction due to loss of appetite, nutrient uptake and utilization (Gross et al. 1999) even death in wild animals (Rao and Acharjyo 1984, Hansen and Perry 1994). The variety of infectious and non-infectious diseases in animals are usually due to parasitic origin (Iqbaln et al. 2000, Akhter & Arshad 2006, Siddiki et al. 2010). Parasitism is a universal problem of livestock leading to lower productivity (Hossain et al. 2011) and even death in wild animals (Rao and Acharjyo 1984). By using same grazing site by domestic and wild animals, there are chances of cross- transmission of parasites between wild to domestic or vice-versa (Hoberg and Brooks 2008, Agosta et al. 2010). A regular surveillance and control measures based on correct diagnosis, effective treatment and proper prophylaxis would certainly reverse the situation (Varadharajan and Pythal 1999). The better understanding of cross- transmission help to make management policy for both wild and domestic animals in different geographical area (Morgan et al. 2005). Historically, study of parasites in wild animals have been descriptive account (Thapa 2013, Chaudhary 2014 and Shrestha 2015) rather than clinical effect that the parasites cause i.e. morbidity and mortality. In addition, a few studies have been done regarding cross- transmission of parasites between domestic and wild animals (Boomker et al. 1987, Horak et al. 2004, Van Wyk and Boomker 2011).

Infectious disease theory (Funk et al. 2001) and mathematical models (de Castro and Bolker 2005) predicted that threatened or endangered host populations should harbor fewer parasites. A recent empirical study (Altizer et al. 2007) showed that threatened primates had fewer helminths, protozoa, and viruses than non threatened species. Low parasite richness intuitively seems to be positive for endangered wildlife species (Smith et al. 2009). However,

the loss of parasites could be unhealthy for an ecosystem (Hudson et al. 2002) and lead to a loss of genetic variation in immunity and increased susceptibility (Smith et al. 2009).

Currently, Red Panda have been reported to be infected by various intestinal and lung parasites such as: protozoan parasites including; *Entamoeba* sp, and *Eimeria* sp (Shrestha 2015) and helminth parasites including: *Baylisascaris*, *Angiostrongylus*, *Trichuris* (Lama et al. 2015 and Shrestha 2015), *Strongyloides* sp., Hookworm, *Metastrongylus* sp., *Moniezia* sp. (Shrestha 2015)

1.4 Livestock

Being the Agriculture country (CBS 2001) livestock farming in Nepal is considered as the second major economic activity next to crop Agriculture. It contributes 11% of nation GDP (Gross Domestic Product) and 28% of Agricultural GDP (Shakya 2009). From the multipurpose household survey (Sakya 2009) showed that the total household income, livestock sources contribute 21.2% in the mountain, 19.7% in hill and 9.7% in the terai.

Livestock farming generally provide wool, high quality food (meat and milk), hides, skin, motive power for agricultural operative and transport; the organic manure which is necessary for soil fertility and fuel for farm household are also provide by livestock. Various livestock species, cattle are prominent (47.5%) followed by buffalo (12.3%), goat (15.8%) and sheep (10.4%) (Maharjan 2009). In Nepal consumption of meat, milk, and their products are traditional (Shakya 2009) and annual production are ; milk 1158780 metricton and meat 98895 metricton including buff 12749 metricton, mutton 2823 metricton and goat 18584 metricton (Maharjan 2009).

Due to the gastrointestinal parasite, it affects the production of milk and meat quality (Krecek and Waller 2006, Miller et al. 1998). GIT parasite infection causes direct losses due to drop in production and death of animal and indirect economic losses due to increased cost of control strategies (Soulsby 1982), especially in small ruminants in tropics and subtropics (Perry et al. 2002). In Nepal, parasitic disease is a major problem to livestock and about 24%

of deaths in goat were reported to be due to intestinal parasites and total economic losses were 25% (Lohani and Rasai1995). The consequences of GIT parasites infection include reduced feed intake and weight gain, immunity, lower fertility, a reduction in milk production and work capacity and death in critical infection (Fikru et al. 2006).

1.5. Gastrointestinal Parasites of livestock

All the animals are not equally susceptible to infectious diseases, some has high resistance power and some has low for same infection and cause quick transmission from the animal which has high resistance power to low resistance. Such sort of communicable disease causes serious infection to other (Maharjan 2009). If the transmission of such types of diseases in animals could be reduced it will be good achievement for food safety (Maharjan 2009) and Conservation Area (Chaudhary 2014 and Thapa 2013). To break the transmission cycle, it is necessary to understand, transmission process, effective diagnostic tool, treatment and preventive measure and finally the availability of clear surrounding environment before targeting the disease.

Livestock are more susceptible for various parasitic diseases, currently, livestock are infected with various protozoan parasitic disease such as: *Eimeria* sp., *Entamoeba* sp *Balantidium coli* and *Giardia* sp. (Kanyari et al. 2009, Byanju et al. 2011), nematode: *Trichostrongylus* sp., *Strongyloides* sp., Hook worm, *Ascaris* sp. (Dhakal 2008, Byanju et al. 2011, Neupane 2012), cestode; *Moniezia* sp., *Taenia* sp. and *Dipylidium* sp., (Dhakal 2008, Byanju et al. 2011), trematode; *Paramphistomum* sp., *Dicrocoelium* sp., *Fasciola* sp., *Schistosoma* sp. and *Amphistomum* sp. (Dhakal 2008, Kajuria et al. 2013).

1.6 Problem statement and justification

Red Panda is vulnerable species which are indicator of Himalayan mountain ecosystem and global warming (Wang et al. 2008). There is an estimated population of less than 10,000 mature individuals worldwide (Wang et al. 2008) among them about 314 individuals lie in Nepal (Bista and Paudel et al. 2015). The mortality rate of Red Panda is high and one of the causes may be due to parasitic disease (Yonzon 1989). The Red Panda is one of the least studied mammalian species due to the occurrence in high altitude, dwelling in dense forest, arboreal characters, and elusive and nocturnal behavior (Roberts and Gittleman 1984). These factors were also complemented by inefficient government policy, park regulations and political instability (Baral and Heinen 2005). The study on ecology habitat and food analysis has been carried out by different researcher but least research has been carried out about parasitic infection on Red Panda.

1.7 Objectives

1.7.1 General objective

To determine the distribution of gastrointestinal parasites of Red Panda and livestock in community forest of Illam.

1.7.2 Specific objectives

1. To determine the prevalence of intestinal parasites of Red Panda.
2. To determine the prevalence of intestinal parasites of livestock.
3. To determine the probable sharing of intestinal parasites in between Red Panda and livestock.

2. LITERATURE REVIEW

Parasites are cosmopolitan in distribution infecting human, domestic and wild animals. Large number of researches on parasitic infection have been carried out in human and domestic animals while studies on parasitic infection in wild animals are scanty. Red Panda is a wild carnivore but adapted to herbivore food habit. Due to this reason, possibility of parasitic infection in Red Panda belonging to carnivore as well as herbivore animals.

2.1 Global scenario of gastrointestinal parasites of Red Panda and other wild carnivore.

Taxonomically Red Pandas belong to carnivora and phylogenetically related to other carnivores including; Giant panda, Raccoons, Bear, Jackals etc. Hence probability of parasites of Red Panda are similar with those carnivore. Few studies have been carried out on parasitic infection in Red Panda. Red Panda has been found to be infected with gastrointestinal as well as parasites of lungs and heart.

Lungs worm have been reported to be dreadful parasites causing pneumonia in Red Panda. A group of lung worms infecting Red Panda includes metastrongyloid group which are: *Angiostrongylus* sp., *Crenosoma* sp.. The metastrongyloid nematode *Angiostrongylus vasorum* has been reported in Red Pandas (*Ailurus fulgens fulgens*) from European zoos (Jensen et al. 2005, Grondahl et al. 2005, Bertelsen et al. 2010). In the similar study, this species was also reported in a 9 year old male, captive Red Panda from urban Zoo in the United Kingdom (Janet et al. 2009). Similarly, in a coprological survey of Red Pandas from different zoos in Europe, 2.6% Red Pandas were found to be infected with *A. vasorum*, 4.3% with *Crenosoma* and 27.8% Red Pandas with previously unidentified metastrongyloid species but morphologically distinct from *A. vasorum* as the most prevalent (Bertelsen et al. 2010). From Aalborg Zoo, Denmark Willesen et al. (2012) examined four captive-breed Red Pandas and found infected with a newly discovered metastrongyloid nematode. Other cases of *Angiostrongylus* sp. and Crenosomatidae had been reported from 52 Red Pandas from the National Zoos of America (Montali et al. 1984).

Out of 115 faecal samples of Red Panda examined in Padmaja Naidu Himalayan Zoological Park (PNHZZP), India, seven Pandas has been reported to be infected with endoparasites (Pradhan et al. 2011) and identified genera includes protozoan parasites; *Trichomonas* sp.,

trematode; *Schistosoma* sp. and nematode; *Ascaris* sp. Another trematode *Ogmocotyle ailuri* was previously reported from Red Panda (*A. fulgens*) of National Zoological Park in the United States (Price 1954).

In USA two neonatal Red Pandas have been reports to be infected with *Sarcocystic* spp. infection and concluded vertical transmission of this parasites by histopathological, immunohistochemical, molecular and ultrastructural diagnosis (Zoll et al. 2015).

Chowdhary (2001) has reported *Toxocara transfuga* and hookworm species from Red Pandas from Indian Subcontinent. Similarly Neiffer et al. (2002) confirmed heartworm *Dirofilaria* sp. infection, presumably with *D. immitis* in Red Panda (*A. fulgens fulgens*) from North America and China (Lan et al. 2012). *Toxoplasma gondii* has also been reported in Red Panda (*A. fulgens fulgens*) from America (Sikarskie et al. 1991).

Baylisascaris spp. are widely distributed in the Giant Panda (*Ailuropoda melanoleuca*), Red Panda (*Ailurus fulgens*), raccoon (*Procyon lotor*), Ursid species (*Ursus maritimus*, *Ursus arctos pruinosus*, *Selenartos thibetanus mupinensis* and *Ursus arctos lasiotus*) and other mammals including humans (Sato et al. 2004, Zhang et al. 2011, Xie et al. 2011, Xie et al. 2013). The nematode *Baylisascaris shroederi* is the intestinal parasite of giant pandas, and can cause intestinal obstruction, inflammation, and death (Zhang and Wei, 2006, Hu 2001) while transmission of parasites depends on direct contact between the host and ingestion of free-living infective stages or penetration of free-living stages present in the environment (Karamon et al. 2013). Many food or water resources can become polluted because pandas defecate while feeding (Zhang and Wei 2006). Zhou et al. (2013) and Zhang et al. (2011) investigated the infection of *B. schroederi* in faecal samples of Giant panda (*Ailuropoda melanoleuca*) in China using PCR.

B. procyonis was reported from North America (Logiudice 2003), New York (Kidder et al.1989), Portland(Yeitz et al. 2009), North Carolina (Hernandez et al. 2012) Western Maryland (Ainsley et al. 2012), Illinois (Birch et al. 1994), Germany (Baeur and Gey 2002, Kazacos 2001, Miyashita 1993, Sato et al. 2001), Canada (Sexsmith et al. 2009), West Virginia (Kazacos 2001, Souza et al. 2009) and Poland (Karamon et al. 2013) from Raccoons, in giant panda (Yang 1998, Zhang 2008, He 2009, Xie et al. 2011, Yang and Zhang 2013), in human (Huff et al. 1984, Park et al. 2000) and in Red Panda (Xie et al. 2011 and Pradhan et al. 2011).

A study carried out in Illinois by Adams et al. (1981) and they showed that raccoons were infected with Coccidian parasites *Eimeria nuttalli* oocysts, *E. procyonis* oocysts and sporocysts of *Sarcocystis* sp., Similarly, Dubey (1982) surveyed in Columbus and he found *Baylisascaris procyonis*, trichurid, capillarid, trichostrongyloid and *Eimeria procyonis* oocysts in raccoons. In the similar study, *Eimeria procyonis*-like oocysts were reported in 15 of 15 captive raccoons and endogenous coccidian stages (large and small schizonts) in 6 of 6 juvenile wild-caught raccoons (Dubey et al. 2000). Foster et al. (2004) reported *Eimeria procyonis* (84%), *Eimeria nuttalli* (10%), 1 unidentified species of *Eimeria* (3%) and an unidentified species of *Sarcosystis* (3%) from adult raccoons (*Procyon lotor*) in U.S.A. One nematode worm; *Baylisascaris procyonis* and one unidentified tapeworm has been reported in road-killed Raccoons from West- Maryland (Ainsley et al. 2012).

Kelley (2006) reported 72.2% prevalence of cestode in raccoons (*Procyon lotor*) from Texas including *Atriotaenia procyonis*, *Mesocestoides* spp., and the immature species of Taeniidae. In the similar study, Kelley et al. (2008) reported cestodes from 35 raccoons (*Procyon lotor*) in North Central Texas, including *Atriotaenia procyonis*, *Mesocestoides* sp. and immature *Taenia pisiformis*. Another study carried out in North Central Texas, showed, other species of trematode parasites in raccoons (*Procyon lotor*), the mammalian Schistosome *Heterobilharzia americana* with prevalence rate of 47.2% (Kelley 2010). Among 19 raccoons captured, 8 species of helminths including five nematodes (*Physaloptera rara*, *Placoconus lotoris*, *Molineus barbatus*, *Baylisascaris procyonis*, *Toxoascaris procyonis*); one acanthocephalan (*Macracanthorhynchus ingens*), and two cestodes (*Atriotaenia procyonis* and *Mesocestoides lineatus*) were reported in raccoon (*Procyon lotor*) from Duval County, Texas.

Kresta et al. 2009 examined 590 faecal samples of Raccoons in Texas and identified 20 different helminthes. Among them; 13 nematodes (*Physaloptera rara*, *Gnathostoma procyonis*, *Gongylonema* sp. *Placoconus lotoris*, *Molineus barbatus*, *Toxascaris leonine*, *Baylisascaris procyonis*, *Lagochilascaris* sp., *Synhimanthus* sp, *Aonchotheca putorii*, *Pharyngodon* sp., *Syphacia* sp., and *Cruzia americana*), two Cestoda (*Atriotaenia procyonis*, *Mesocestoides lineatus*), two Acanthocephala (*Macracanthorhynchus ingens*, *Moniliformis* sp.) and three Trematoda (*Pharyngostomoides* sp., *Heterobilharzia* sp., *Gryosoma singularis*). Birch et al. (1994) were found Six species of helminths: four species of nematodes

(*Arthrocephalus lotoris*, *Physaloptera rara*, *Gnathostoma procyonis*, and *Baylisascaris procyonis*); one species of cestode (*Mesocestoides variabilis*); and one species of acanthocephalan (*Macracanthorhynchus ingens*). Michael et al. (1999) collected samples from April 1997 through April 1998 of 128 raccoons (*Procyon lotor*) from 7 sites representing 4 physiographic areas in South Carolina were examined for gastrointestinal helminth parasites and they found four species of nematodes (*Gnathostoma procyonis*, *Physaloptera rara*, *Arthrocephalus lotoris* and *Molineus barhatus*) and 2 species of acanthocephalans (*Macracanthorhynchus ingens* and *Centrorhynchus conspectus*).

2.2 National scenario of gastrointestinal parasites of Red Panda and other wild ruminants.

In Nepal, most of the investigations have been performed in ecological basis like ecology, behaviour, and population status of Red Panda in different protected area like National Parks, Conservation Areas and Hunting Reserves (Yonzon 1989, Yonzon and Hunter 1991, Sharma and Belant 2009 and Sharma and Belant 2010). Less numbers of research have been carried out in out of protected area. In the national context, only two studies have been done in gastro-intestinal parasites of Red Panda (Shrestha 2015 and Lama et al. 2015) from RNP and KBCA respectively.

Lama et al. (2015) studied the intestinal parasitic infections in free-ranging Red Panda (*Ailurus fulgens*) from Kothi Bhir Community Area (KBCA), Rolpa, Nepal and showed 100% prevalence of protozoan parasites including; Coccidian parasites and some unidentified species while nematodes includes; *Trichuris* sp., *Baylisascaris* sp., *Angiostrongylus* sp. and one unidentified species and in case of cestode and trematode eggs were present but species has been identified. Shrestha (2015) carried out study on gastrointestinal parasites in Red Panda (*Ailurus fulgens*) in RNP, Nepal and found 93% Red Panda were infected with either protozoan or helminth or both. Altogether 12 parasitic genera were identified in Red panda and these were; *Entamoeba* and *Eimeria* as protozoan; Hook Worm, *Trichuris*, *Strongyloides*, *Baylisascaris*, *Toxoasacaris*, *Oxyuris*, *Crenosoma*, *Angiostrongylus*, *Metastrongylus* as nematodes and *Moniezia* as cestode but no trematode were recorded.

Being the group carnivore, Red Panda is herbivores in food habitat and parasite of Red Panda may be similar with ruminants because most of the parasites transmitted through food. In Nepal, few investigations have been carried out in wild ruminants.

Thapa (2012) carried out a survey of gastrointestinal infection of parasites in Himalayan Tahr and Barking Deer in Rara National Park and reported altogether 10 genera of intestinal parasites which includes: *Eimeria* sp., *Oxyuris* sp., *Strongyloides* sp., *Ascaris* sp., *Trichostrongylus* sp., *Dictyocalus* sp., *Mullerius* sp., *Haemonchus* sp., and *Moniezia* sp., in Himalayan Tahr while in Barking Deer, *Eimeria* sp. *Oxyuris* sp. *Ascaris* sp. *Trichuris* sp. *Dictyocalus* sp., *Haemonchus* sp. and *Moniezia* sp. have been reported.

Chaudhary (2014) carried out a survey of the gastrointestinal parasites in Krisnasar (*Antelope cervicapra*) of Blackbuck conservation area, Bardia and Shuklaphanta wildlife reserve, Kanchanpur, Nepal and recorded *Entamoeba* sp. and *Eimeria* sp. as a protozoan parasites and among helminth parasites *Oxyuris* sp., *Strongyloides* spp., *Ascaris* sp., *Trichostrongylus* sp., *Haemonchus* sp., *Trichuris* sp. and *Bunostomum* sp. as a nematodes; *Paramphistomum* sp., *Schistosoma* sp. and *Fasiola* sp. as a trematode, and *Moniezia* sp. as a cestode.

2.3 Gastrointestinal parasites of livestock

Livestock are important animals for economic point of view but generally infected with several types of gastrointestinal parasites eg; protozoan and helminth parasites. GI parasites are the major problems in livestock management due to high mortality, weak body condition, low productivity, high cost of drugs (Rajakaruna and Warnakulasooriya 2011). Due to unmanaged farming system and sharing pasture land parasites of one animal can easily transmit to other.

Cattles are important domesticated large ruminants in terms of agricultural and economic aspects. Cattle are found to be infected with various intestinal parasites. Common intestinal parasites of cattle includes; protozoan parasite: *Entamoeba* sp., *Balantidium* sp., *Giardia* sp., *Isospora* sp., *Eimeria* sp. (Sathaporn et al. 2011, Bui et al. 2009, Paul et al.2010, Pfukenyi et al. 2007, Ntonifor 2013). Similarly the cattle were reported to be infected with helminth parasites. Among helminth, nematodes species are more common and reported species are; *Strongyle* sp., *Strongyloides* sp., *Trichostrongylus* sp., *Oesophagostomum* sp., *Haemonchus* sp., *Bunostomum* sp., *Ascaris* sp., *Capilaria* sp., *Ostertagia* sp., *Trichuris* sp., *Cooperia* sp.,

Toxocara sp., *Chabertia* sp., *Avitellina* sp., *Nematodirus* sp., *Dictyocaulus* sp., while cestode; *Taenia* sp., *Moniezia* sp., and among trematode; *Fasiola* sp., *Paramphistom* sp., *Schistosoma* sp., *Amphistomum* sp. (Hook et al. 2004, Frooq et al. 2012, Chowdhury et al. 1993, Masood and Majid 1989, Bilal et al. 2009, Mersha 2012, Rajakaruna and Warnakulasooriya 2011, Jeon et al. 2010).

Goat and sheep are considered as a small ruminants and rear in mixed farm for wool, milk, meat by farmer. Due to mixed farming system cross transmission of parasites between goat and sheep are possible. The most common parasites reported in goat and sheep includes: *Entamoeba* sp., *Balantidium* sp., *Giardia* sp., *Isospora* sp., *Eimeria* sp. (Diaz et al. 2011, Ntonifor et al. 2013, Bui et al. 2009, Kajuria et al. 2013) among protozoan parasites; *Strongyle* sp., *Strongyloides* sp., *Trichostrongylus* sp., *Oesophagostomum* sp., *Haemonchus* sp., *Bunostomum* sp., *Ascaris* sp., *Capilaria* sp., *Ostertagia* sp., *Trichuris* sp., *Cooperia* sp., *Toxocara* sp., *Necator* sp., *Chabertia* sp., *Avitellina* sp., *Nematodirus* sp., *Dictyocaulus* sp., among nematodes; *Taenia* sp., *Moniezia* sp., among cestodes; *Fasiola* sp., *Paramphistom* sp., *Schistosoma* sp., *Dicrocoelium* sp., *Amphistomum* sp., and among trematodes (Kanyari et al. 2011, Basir 2009, Neupane 2012, Tefera et al. 2009, Ikpeze and Nzemaka 2009, Nwake et al. 2015, Bandyopadhyay et al. 2010, Yadav and Tandon 1989).

Yak (*Poephagus gruenniens*) is a multipurpose animal which provides meat, milk, hair, wool and hair as well as play vital role in agricultural, transportation and rural economies of the people. People practice free ranging and migratory grazing system of Yak and during winter they share grazing land with cattle as well as parasites too (Goswami et al. 2013) while infection of parasites causes degradation of health and reduce production of milk, meat, hair (Waller 2002). Some reported GI protozoan and helminth parasites in Yak from different countries includes; *Eimeria* sp., *Coccyx* sp., *Haemonchus* sp., *Nematodirus* sp., *Cooperia* spp., *Strongyle* sp., *Moniezia* spp., *Nematodirus* sp., *Trichuris* sp., *Fasiola* sp., *Paramphistomum* sp., *Amphistomum* sp., *Ascaris* sp., *Trichuris* sp., *Dicrocoelium* spp., (Byanju et al 2011, Bandyopadhyay et al. 2010, Hui Dong et al. 2012, Shrestha and Bindari 2013, Kuchai et al. 2010).

Horses are important animal for transportation in the resources poor communities where road facilities are not available. Beside that horses are used in agriculture for secondary and tertiary cultivation land preparation (Abaynen et al. 2002) and

recently they are used for sporting. Horses are prone to number of infectious parasitic diseases and reported parasites of horse includes: *Parascaris* sp., *Strongyloides* sp., *Fasciola* sp., *Oxyuris* sp., *Trichuris* sp., *Dicrocoelium* sp. *Eimeria* sp. *Trichonema* sp., *Triodontophorus* sp., *Grastrodiscus* sp., *Habronema* sp., *Strongyloides* sp., *Dictyocaulus* sp., *Trichostrongylus* sp., *Cyathostome* sp., *Triodontophorus* sp., *Strongylus* sp cestode ; *Anoplocephala magna* (Uslu and Guclu 2007, Lem et al. 2012, Pam et al. 2013, Berhanu et al. 2014, Tesfu et al. 2014).

2.4 Parasite sharing between wild and domestic animals

Transmission of infectious diseases between wild and domestic animals are becoming major issue in global (Gortazar et al. 2007). Being the same group, same food habitat or sharing same pasture land domestic and wild animals may be sharing same types of parasites. Sharing of the similar types of parasites by different animals are the neglected subject in society due to low economic condition and lack of knowledge (Pedesen et al. 2005). Transmission of the infectious disease is due to the rising interaction between the different species (Gortazar et al. 2007). Non host specific or multihost parasites are sharing between the wild and domestic animal as a host due to sharing same ecological factors (Abal and Torger 2013) and intermediate arthropode host (Otranto et al. 2015). The investigation conducted by Pence et al. (2003) has been showed that the transmission of parasites between Cat and Ocelet (*Leopardus pardalis*) was possible because similar types of cyst, eggs and larva were recorded despite different in size. In another study by using PCR method, it has been showed that the transmission of protozoan parasite (*Neospora caninum*) between livestock and wild animals were possible (Gondium et al. 2004).

3. MATERIALS AND METHODS

3.1 Study Area

The study area Illam district is a hilly district (26°54'0" north and 87°56'0"east) of Mechi zone of Nepal's eastern development region. It lies in the western slop of the Singhalila ridge, adjacent to Singhalila National Park of Darjeeling; India and South of Kanchanjunga conservation Area; Nepal. This area forms one of the five Prioritized landscape of the eastern Himalayas, the eastern Himalayan broadleaf and conifer Global 200 eco region (Olson and Dinerstein 1998) and Himalayan Bio diversity hot sport (Myers et al. 2000). This Area is important for Red Panda mainly because this provides a biological linkage between two protected Area, Kanchanjunga Conservation Area in Nepal and Singalila National Park in India. The elevation of Illam is 300m to 4000m. Red panda has been recorded from Jogmai, Jamuna, Mabu, Puwamajhuwa, Maipokhari, Maimajhuwa and Pyang VDCs of Illam. The present study area covers Chhintapu and Dhanepa community forest of Maimajhuwa VDC, National forest of Mabu and Jamuna VDC and Kalikhop and Dadeli Community forest of Jogmai VDCs.

Illam is rich in bio-diversity. Different varieties of vegetation have been identified in the area, including forests of *Pinus roxburghii*, *Schima-Castanopsis*, *Alnus*, *Pinus wallichiana*, *Pinus patula*, *Rhododendron*, *Quercus lanata* and Temperate mountain oak forest (W.W.F and ICIMOD 2001). Different fauna found in this area includes: Common leopard (*Panthera pardus*), Clouded leopard (*Neofelis nebulosa*), Leopard cat (*Prionailurus benghalensis*), Wild boar (*Sus scrofa*), Yellow throated martin (*Mattes flavigula*), Assamese macaque (*Macaca assamensis*), Barking deer (*Muntiacus muntjak*) and Red Panda (*Ailurus flulgens*) (Kandel 2009). The major attraction Illam for the researches includes abundant availability of rare birds and Mammals including Red panda.

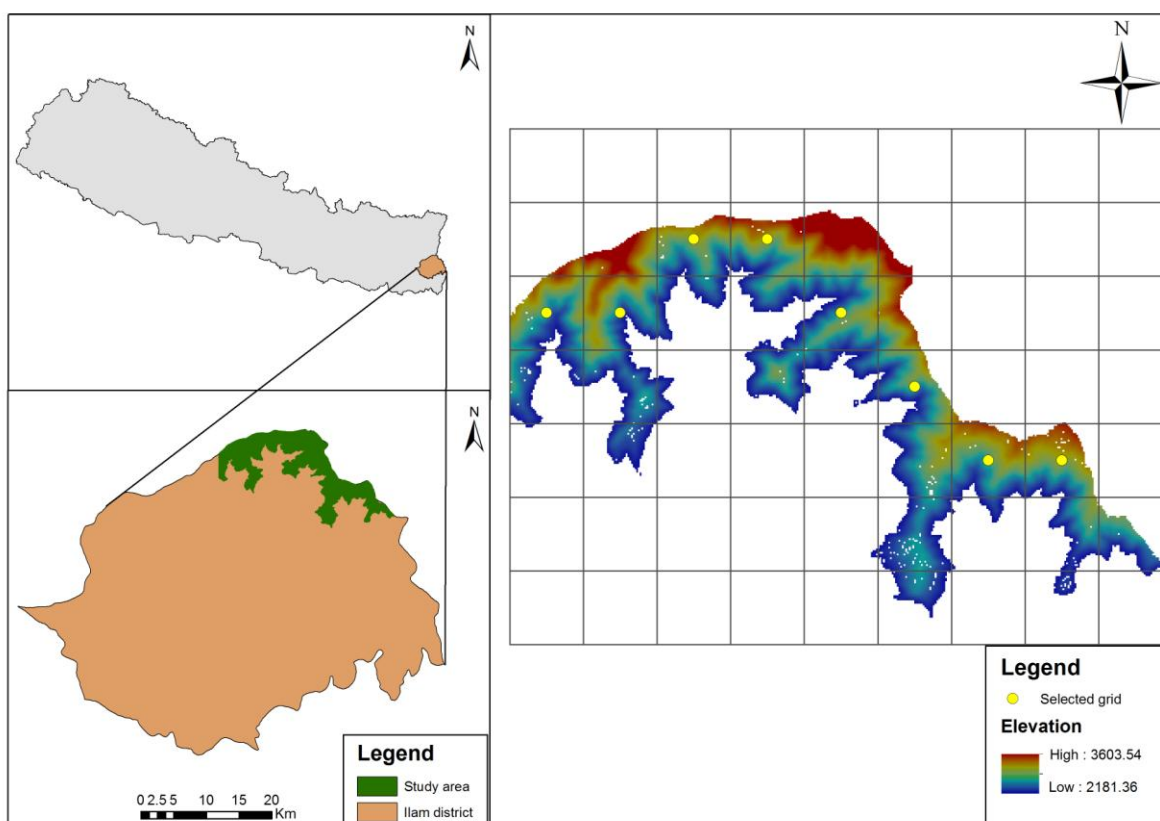


Fig 1: Map of Nepal including Illam district showing study area

3.2 Materials

During the research the materials used have been listed below:

3.2.1 Materials for field

- | | | | |
|-------------------|------------|----------------|------------|
| i. Sterile vials | ii. GPS | iii. Binocular | iv. Camera |
| v. Verner caliber | vi. Globes | | |

3.2.2 Materials for Laboratory

- | | | | |
|----------------|--------------------------|-----------------------|----------------|
| i. Beaker | ii. Motor/Pistle | iii. Glass rod | iv. Globes |
| v. Slides | vi. Cover slips | vii. Volumetric flask | |
| viii. Droppers | ix. Tea strainer | x. Measuring cylinder | xi. Toothpicks |
| xii. Niddle | xiii. Centrifuge Machine | xiv. Centrifuge tube | |

- | | | |
|------------------------------------|-----------------------|----------------|
| xv. Electric balance
microscope | xvi. Cotton | xvii. Electric |
| xviii. Gloves | xix. Stage micrometer | xx. Mask |
| xxi. Ocular-micrometer | xxii. Refrigerator | |

3.3 Chemicals

- | | |
|--|---------------------------|
| i. Potassium dichromate ($K_2Cr_2O_7$) | ii. Distilled water (D/W) |
| iii. Saturated NaCl solution | iv. Methylene blue |
| v. Lugol's Iodine solution | |

3.4 Study Design

The present study was designed to assess the intestinal parasitic infection in Red Panda and livestock in Illam community forest. The study includes;

- a) Selection of animal habitat by GIS system.
- b) Collection of fresh pellet samples in sterile vials from transects.
- c) Preservation of faecal samples in 2.5% Potassium dichromate solution.
- d) Examination of faecal samples by using flotation, sedimentation and Stoll's counting technique.
- e) Identification and measurement of eggs/cysts of different parasites.

3.4.1 Sample collection method

Using GIS system possible habitat of Red Panda was selected, for this elevation was selected from 2200m to 4800m because Red Panda was recorded from 2200 to 4800m altitude (Roberts and Gittleman 2009) and prepared grids of size 1.7×1.7 (2.89) km^2 , because the average home range of Red Panda is 2.89 Km^2 (Yonzon 1989, Yonzon et al. 1991) to reduce the chances of duplicate samples from the same individuals. From the selected area eight grids were randomly selected and in each grid two vertical transects were made. First transect was 500m apart from starting point of grid and second transect was 700m apart from first transect. Samples were collected from the established transects (Burnham et al. 1980) and to increase sample size, we repeated collection of samples from same transect or grid and opportunistically while walking from one transect line to another. Fresh faecal samples encountered during study period were measured using vernier caliber, different pellets are

likely from different individuals. Livestock samples were collected immediately after they were defecated, and each sample was visually confirmed to be from different individuals. Approximately 20 gm of faecal samples of both Red Panda and livestock were collected on either side of 2 m apart of each transect and also the opportunistically from the trees branches.

3.4.2 Preservation of samples

Collected faecal samples of Red Panda and livestock were preserved in 2.5% Potassium dichromate that help in maintaining the morphology of protozoan parasites and preventing further development of some helminthic eggs and larvae.

3.4.3 Sample size

From the study area 55 samples were collected. Out of them:

Table 2: Proportion of faecal samples collected from Illam district.

Common Name	Scientific Name	Collected Sample (%)
Red panda	<i>Ailurus fulgens</i>	25.45 %
Cow	<i>Bos sp.</i>	36.36 %
Goat	<i>Capra hircus</i>	16.36 %
Horse	<i>Equus caballus</i>	9.1 %
Sheep	<i>Ovis aries</i>	7.27 %
Yak	<i>Bos grunniens</i>	3.63 %
Buffalo	<i>Bubalus bubalis</i>	1.82 %

These samples were transported to a laboratory of the Central Department of Zoology, Tribhuvan University, Kathmandu in preservatives and refrigerated and was conducted following techniques for the identification of eggs and oocysts present in feces.

Photos of Field activities:



Photo 1: Questioning with local people



Photo 2: Scat of Red Panda



Photo 3: Measuring the Red Panda scat



Photo 4: Collecting of scat of Red Panda



Photo 5: Collection of pellet of Sheep



Photo 6: Collection of dung of Cow



Photo 7: Fresh and dry scat of Red Panda

Photo 8: Yak in the habitat of Red Panda



Photo 9: Defecating pellet by Goats

Photo 10 : Cattle in the habitat of Red Panda

Lab work Photos:



Photo 11: Running the centrifuge mechain

Photo 12: Preparation of Slide



Photo 13: Microscopic observation of slide

3.5 Microscopic Examination

All the samples were examined at the laboratory of Central Department of Zoology, Tribhuvan University, Kirtipur. The samples were processed for microscopic examination. The ova/oocysts/cyst and larvae of different parasites were identified according to the morphology and quantitative estimation by using saline and iodine wet mount and concentration method (flotation and sedimentation) and Stoll's counting technique to determined mix infection and intensity of parasites(Soulsby 1982).

3.5.1 Saline wet mount

Small quantity (about 2mg) of faeces was mixed in a drop of saline placed on a clean slide. Any grass fiber or particles were removed and covered with coverslip. The smear was examined under microscope at 10X and 40X (Soulsby 1982).

3.5.2 Iodine wet mount

It was done by emulsifying the faecal samples in a drop of Lugol's Iodine solution on a slide covered with a clean coverslip and examined under microscope as above.

3.5.3 Concentration method

Eggs/cysts are often low number in faeces that they are difficult to be detected in direct smears or mounts. Therefore, this procedures were performed which includes flotation and sedimentation techniques (Soulsby 1982).

a. Differential Floatation Technique

Nematode and cestode eggs present in Red Pandas and livestock feces is detected through this technique. This technique ensures the egg float in the floatation liquid, which helps to identify the eggs.

Approximately 3 gm of faecal sample was taken in a beaker and added 20 ml of water then the sample was grinded lightly with the help of motor and pistle and filter the solution by tea strainer. The filtrate solution was poured into a centrifuge tube of 15 ml and centrifuged at 1000 rpm for 5 minutes. The tube's water was replaced with saturated sodium chloride solution and again centrifuged.

After centrifuge more saturated sodium chloride solution was added to develop convex surface at the top of the tube and one drop of methylene blue (to stained) where a cover slip can be placed for a few minutes and then cover slip was removed and placed on a slide and examined at 10X and 40X. Photographs of cyst, eggs and parasites were taken and identified based on egg's color, shape, and size.

b. Sedimentation

This technique is used for the detection of trematode eggs. It provides good results as the eggs of the trematode are bit heavier than the other, where sediments of centrifuged contents is taken for eggs detection (Veterinary Lab. Tecniques 2003).

Saturated salt solution was removed gently from the test tube after examined the flotation portion and pure the sediment content into the watch glass and stirred the content gently to mixed it. One drop from the mixture was taken to prepared a second slid. The specimen was stained with iodine wetmounts solution.

In this way two slides were prepared from one sample (one from flotation and one from sedimentation) were examined under 10X and 40X of microscope to detect eggs of helminthes and trophozoites or cyst of gastrointestinal protozoans.

c. Egg cyst and larva size measurement

- by using ocular and stage micrometer
- length and breath measured by calibration

d. Egg, cyst and larva identification

- on the basis of shape and size along with published literatures (Barutzki and Schaper 2009, Bhir 1998, Villeneuve 2013, Brianti et al. 2012).

3.6 Data Analysis

Feecal flotation and sedimentation procedures yielded similar results to parasite identified. Therefore presence/absence information reflects combined results from both method. So to analyzed the data MS Excel 2007 and SPSS 19 were used.

4. Results

4.1. Gastro-intestinal parasites of Red Panda

A total of 14 fresh faecal samples of Red Panda were collected by using line transect technique from the community forest of Illam and examined by using direct smear and concentration methods for gastro-intestinal parasites detection. All the samples were found to be positive for intestinal parasites.

4.1.1. Protozoan parasites

Red Panda were found to be infected with protozoan parasites belonging to three classes (Table: 3). Among them Coccidian parasite showed the highest prevalence (64.28%) followed by *Entamoeba* sp. (57.14%) and *Balantidium* sp. (14.28%). Study revealed the existence of several species of Coccidian parasites, which were grouped into two broad groups; *Eimeria* with micropyle and without micropyle. The Red Panda were found to be almost equally infected with both groups of this parasites.

Table 3: Prevalence of Protozoan parasite of Red Panda from Illam community forest

S.N	Class	Name of Parasite	Prevalence Rate (%)
1.	Sarcodina	<i>Entamoeba</i> sp.	8(57.14%)
2.	Sporozoa	<i>Eimeria</i> with micropyle	9(64.28%)
		<i>Eimeria</i> without micropyle	8(57.14%)
3.	Litostomatea	<i>Balantidium</i> sp.	2(14.28%)

4.1.2. Helminth Parasites

Among the helminth parasites, Trematode and Cestode parasites were not observed from Red Panda. But they were found to be highly infected with nematode parasites belonging to seven different genera. Among them *Oxyuris* sp. showed highest prevalence rate (100%) followed by *Ascaris* sp. (57.14%), *Trichostrongylus* sp. (50%), *Strongyloides* sp. (50%), *Crenosoma* sp. (42.85%), *Trichuris* sp. (42.85%) and Hook worm (35.71%).

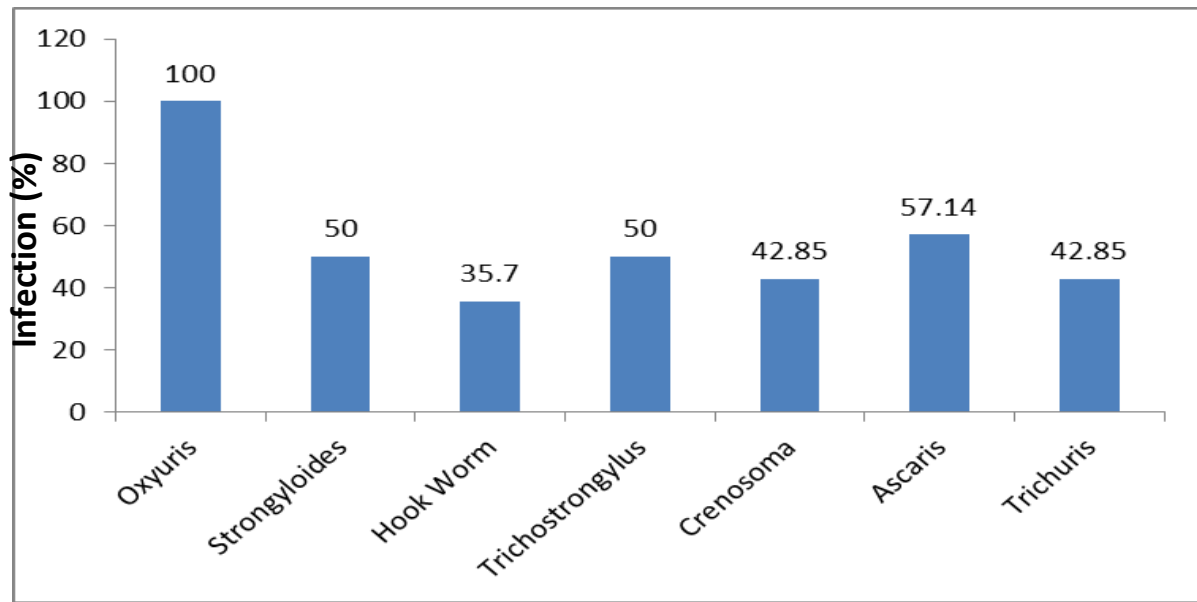


Fig 2: Prevalence of nematode in Red Panda

4.1.3. Mixed infection in Red Panda

Red Panda were found to be infected with different gastro-intestinal parasites. All 14 samples of Red Panda revealed mixed infection with 3-5 different genera in each sample. Among the 14 samples examined, multiple and triple infection found to be (78.57%) and (21.42%) respectively. No single and double infection were observed in this study (Figure 2).

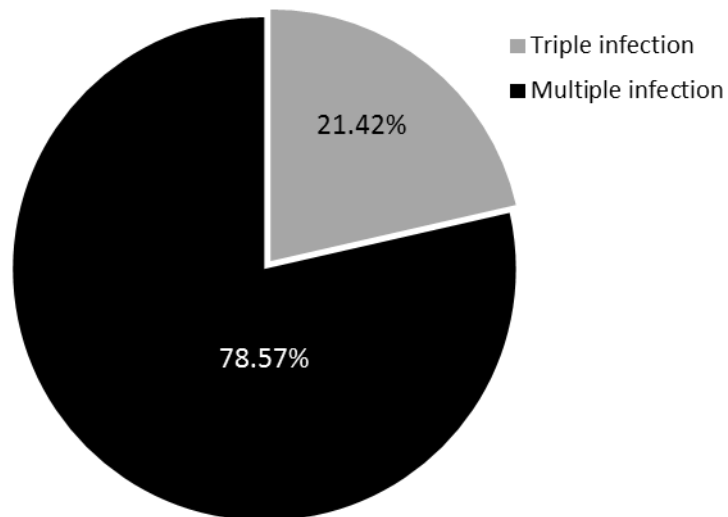


Fig 3: Mixed infection on Red panda

4.1.4. Intensity of parasitic infection

Heavy parasitic infection was considered in those samples which has six or more ova or oocyst observed per field. Maximum five samples of Red Panda showed heavily infected with Coccidian parasite; *Eimeria*. While two each samples showed high intensity of *Oxyuris*, *Trichostrongylus* and *Ascaris* and four samples with *Oxyuris*, three samples with Coccidian and two each samples showed moderate intensity of *Crenosoma* and *Trichostrongyloid* which considered 4-6 ova/oocyst per field. Maximum six samples showed mild infection with *Oxyuris* followed by four each samples with *Entamoeba* and *Eimeria* without micropyle, which considered 2-4 ova/oocyst per field and <2 ova/oocyst observed per field considered light infection; maximum four sample each showed light intensity of *Strongyloides* and *Trichuris*, three samples each with *Entamoeba*, *Cenosoma* and *Ascaris*.

Table 4: Intensity of infection of intestinal parasite in Red Panda

S.N	Class	Name of Parasite	+	++	+++	++++
1.	Sarcodina	<i>Entamoeba</i> sp.	3	4	1	-
2.	Sporozoa	<i>Eimeria</i> with micropyle	-	1	3	5
		<i>Eimeria</i> without micropyle	1	4	2	-
3.	Litostomatea	<i>Balantidium</i> sp.	2	-	-	-
4.	Nematoda	<i>Oxyuris</i> sp.	2	6	4	2
5.		<i>Strongyloides</i> sp.	4	2	1	-
6.		Hook worm	2	2	1	-
7.		<i>Crenosoma</i> sp.	3	1	2	-
8.		<i>Trichostrongylus</i> sp.	2	1	2	2
9.		<i>Ascaris</i> sp.	3	2	1	2
10.		<i>Trichuris</i> sp.	4	1	1	-

4.2 Gastro-intestinal parasite of livestock

Fresh faecal samples of domestic animals were collected from the line transect technique from community forest of Illam. By this technique total 41 samples of domestic animals were collected including 20, 9, 5, 4, 2, 1 samples of cow, goat, horse, sheep, yak, buffalo respectively. All the samples tested were found to be positive for either protozoan or helminth parasites.

4.2.1 Protozoan parasite

The result revealed that cows and horse were infected maximum with Coccidian parasite followed by Sarcodina and Litostomatea. Similar result was observed in case of goat, sheep and yak but Sarcodina and Litostomatea were absent. In case of buffalo, prevalence of litostomatea was absent but other three genera were present out of four protozoan genera (Table: 5).

Table 5: Prevalence of Protozoan parasites of Livestock from Illam community forest

Protozoan parasites	Cow (n=20)	Goat (n=9)	Horse (n=5)	Sheep (n=4)	Yak (n=2)	Buffalo (n=1)	Total (n=41)
Sarcodina <i>Entamoeba</i> sp.	6(30%)	0	2(40%)	0	0	1	9(21.95%)
Sporozoa <i>Eimeria</i> with micropyle	9(45%)	4(44.44%)	2(40%)	3(75%)	1	1	20(48.78%)
<i>Eimeria</i> without micropyle	12(60%)	5(55.55%)	3(60%)	3(75%)	1	1	25(60.97%)
Litostomatea <i>Balantidium</i> sp.	2(10%)	0	1(20%)	0	0	0	3(7.31%)

4.2.2 Helminth Parasites

Domestic animals of Illam which share the same grazing area of Red Panda habitat were found to be infected with all three classes of helminth parasites; nematode, cestode and trematodes.

4.2.2.1 Nematode

Domestic animals of Illam community forest were infected with six genera of nematode parasites. Among them *Oxyuris* sp. (90%) showed the highest prevalence in cows followed by *Ascaris* sp. (55%), each of 50% prevalence by *Strongyloides* sp. and *Trichostrongylus* sp., Hook Worm (45%) and *Trichuris* sp. (40%). In case of goat, *Oxyuris* sp. (88.88%) also showed highest prevalence followed by 66.66% prevalence by *Strongyloid* sp. and *Ascaris* sp. and almost similar by *Trichuris* sp., Hook Worm and *Trichostrongylus* sp. Equal prevalence (80%) were showed by *Oxyuris* sp., *Strongyloides* sp., *Ascaris* sp. but *Trichuris* sp. and *Trichostrongylus* sp. were absent in case of horse while Hook Worm showed 20% prevalence rate. The rate of prevalence of *Oxyuris* sp. and *Trichostrongylus* sp. were high in case of sheep but *Strongyloides* sp., *Trichuris* sp., Hook Worm and *Ascaris* sp. showed almost similar prevalence (Fig: 3).

Table 6: Prevalence of Nematode parasites in livestock

Nematode Parasites	Cow(n=20)	Goat(n=9)	Horse(n=5)	Sheep(n=4)
<i>Oxyuris</i> sp.	18(90%)	8(88.88%)	4(80%)	3(75%)
<i>Strongyloid</i> sp.	10(50%)	6(66.66%)	4(80%)	2(50%)
<i>Trichuris</i> sp.	8(40%)	4(44.44%)	0	1(25%)
Hook worm	9(45%)	3(33.33%)	1(20%)	2(50%)
<i>Trichostrongylus</i> sp.	10(50%)	3(33.33%)	0	3(75%)
<i>Ascaris</i> sp.	11(55%)	6(66.66%)	4(80%)	1(25%)

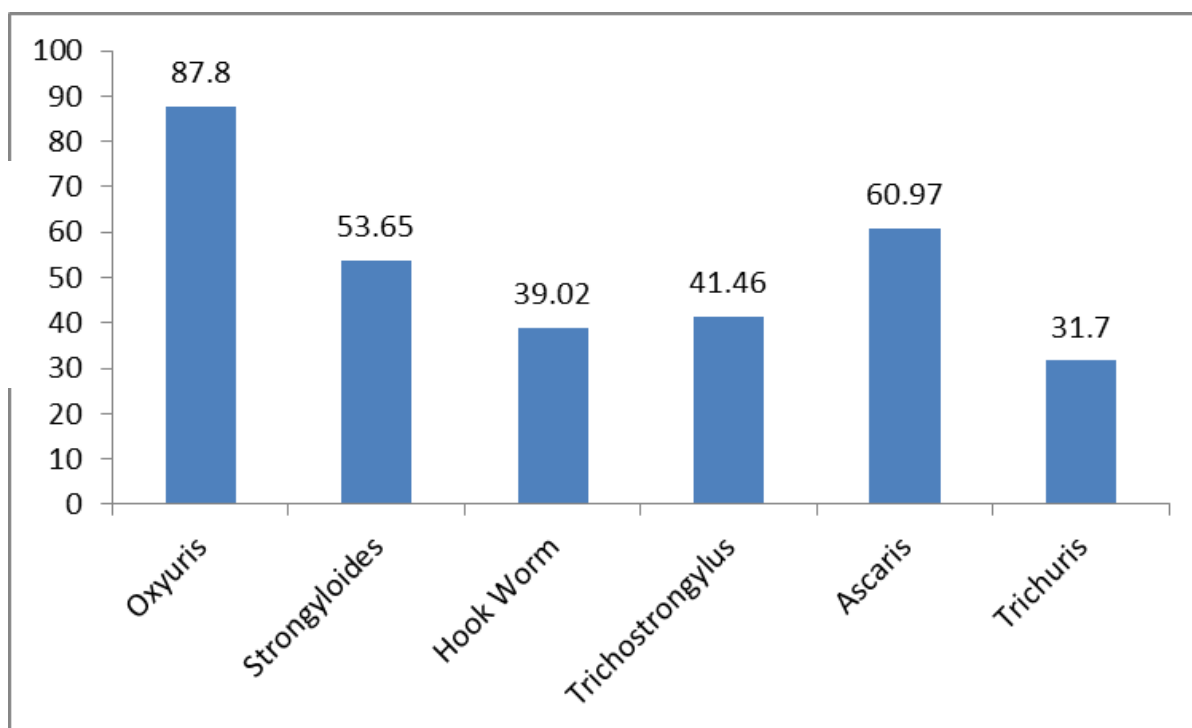


Fig 4: Nematode parasitic Infection in Livestock

In general, 87.8% domestic animals were infected with *Oxyuris* sp. which was the highest prevalence than any other nematode followed by *Ascaris* sp. (60.97%), *Strongyloid* sp. (53.65%), *Trichostrongylus* sp. (41.46%), Hook Worm (39.02%) and *Trichuris* sp. (31.70%) (Fig: 3).

4.2.2.2 Cestode and Trematode

Only one genera of Cestode *i.e* *Moniezia* and one genera of trematode *i.e* *Paramphiostome* sp. were observed during the study and prevalence of *Monizia* sp. and *Paramphiostomum* sp. was found to be 14.63% and 2.43% respectively.

Table 7: Infection of Cestode and trematodes on Livestock

Class	Parasite	Prevalence (%)
Cestode	<i>Moniezia</i> sp.	6(14.63%)
Trematode	<i>Paramphiostomum</i> sp.	1(2.43%)

4.2.3 Mixed infection

During the study, different types of parasitic infections were encountered in livestock. Multiple infection (73.17%) was found to be highest followed by triple (19.51%) and double (7.31%) infection but no single infection was encountered.

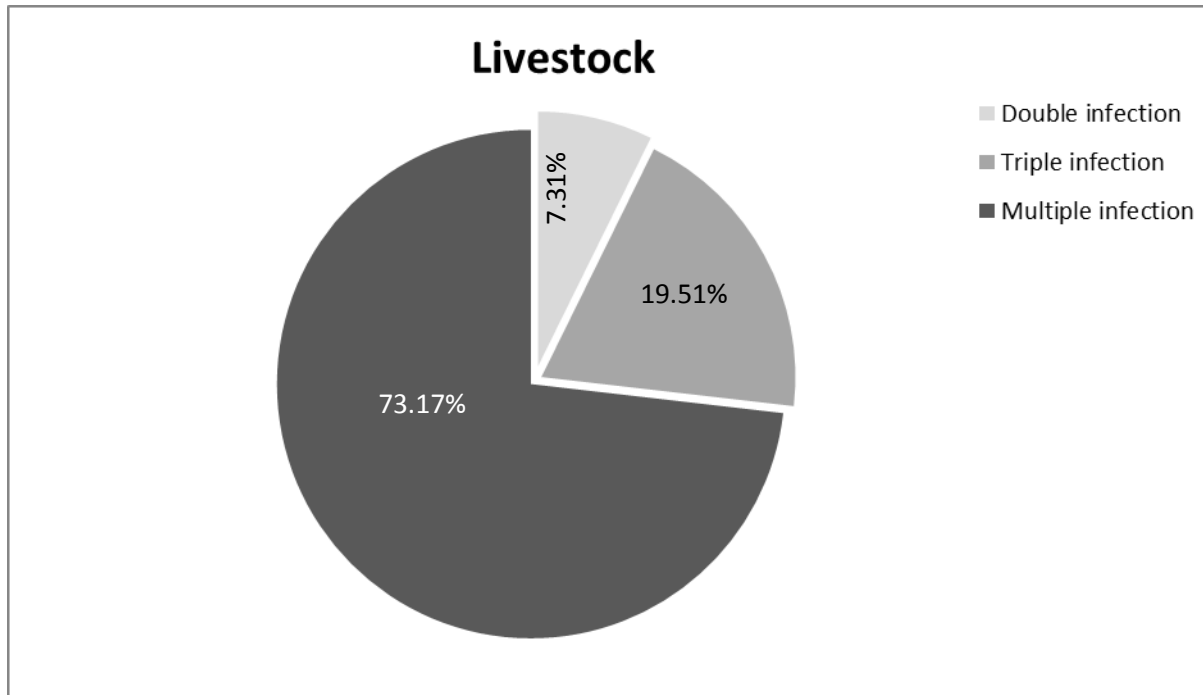


Fig 5: Mixed infection in Livestock

4.3 Comparison of GI parasites in between Red Panda and Livestock.

As a comparison of GIT parasites of Red Panda and livestock, protozoan and nematode showed 100% prevalence rate in Red Panda while 87.8% and 82.92% in case of Livestock. Cestode and trematode are absent in Red Panda but 2.43% and 14.63% prevalence rate in case of livestock. So prevalence of nematode and protozoan were equal in Red Panda while nematode was slightly greater than protozoan in case of livestock.

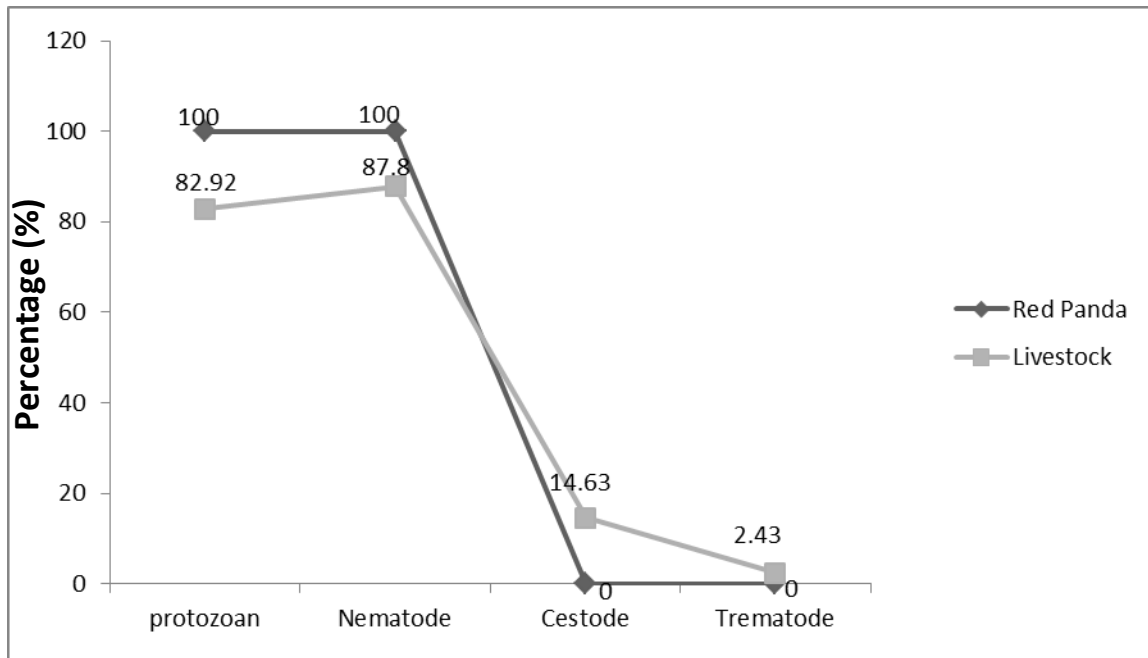


Fig 6: Comparison of GI parasites in between Red Panda and Livestock

4.3.1 Prevalence of protozoan parasites in between Red Panda and Livestock

The protozoan parasites in Red Panda and Livestock were compared. Among four protozoan parasites encountered, *Entamoeba* sp. and *Balantidium* sp. were found to be most prevalence in Red Panda than livestock. While with regard to *Eimeria* sp., *Eimeria* with micropyle was comparatively higher in Red panda but *Eimeria* without micropyle was almost similar in livestock and Red Panda. Statistically there was not significant difference in protozoan infection between Red Panda and livestock *i.e.* ($P= 0.709$, $X^2= 0.625$ at $d.f.=1$). Species wise association showed that there is statistically significant difference in prevalence of *Entamoeba* ($X^2= 6.052$, $P= 0.014$ at $d.f.= 1$). While association of *Eimeria* spp. and *Balantidium* sp. in Red Panda and Livestock were not significant difference (Table: 8).

4.3.2 Nematode parasites in between Red Panda Livestock

During the study seven different nematode parasitic infection were reported. *Oxyuris*, *Trichostrongylus* and *Trichuris* showed highest prevalence in Red Panda than Livestock and the case was just reverse for *Strongyloides*, Hook Worm and *Ascaris*. While *Crenosoma* was only reported in Red Panda. Nematode parasitic infection was statistically not significant difference in between Red Panda and Livestock i.e. ($P=0.314$, $X^2=1.878$ at d.f. =1). Species wise association between Red Panda and livestock of Illam showed that, although the prevalence rate of *Oxyuris* sp. was high in Red Panda, statistically there was not significant difference observed (Table: 8) but in case of Hook Worm, *Trichuris* sp., *Ascaris* sp. and *Trichostrongylus* sp. were almost equally infected in both groups except *Crenosoma* sp. which is dreadful long parasite.

Table 8: Comparative analysis of GI parasites in between Red Panda and livestock

S.N	Class	Parasites	Prevalence in Red Panda	Prevalence in livestock	X ² -Value	P-Value
1.	Sarcodina	<i>Entamoeba</i> sp.	8(57.14%)	9(21.95%)	6.052	0.014
2.	Sporozoa	<i>Eimeria</i> with micropyle	9(64.28%)	20(48.28%)	1.007	0.316
		<i>Eimeria</i> without micropyle	8(57.14%)	25(60.97%)	0.064	0.800
3.	Litostomatea	<i>Balantidium</i> sp.	2(14.28%)	3(7.31%)	0.613	0.592*
4.	Nematoda	<i>Oxyuris</i> sp.	14(100%)	36(87.8%)	1.878	0.314*
5.		<i>Strongyloides</i> sp.	7(50%)	22(53.65%)	0.056	0.813
6.		Hook worm	5(35.7%)	16(39.02%)	0.048	0.826
7.		<i>Trichostrongylus</i> sp.	7(50%)	17(41.46%)	0.309	0.578
8.		<i>Crenosoma</i> sp.	6(42.85%)	0	19.723	0.000*
9.		<i>Ascaris</i> sp.	8(57.14%)	25(60.975)	0.064	0.800
10.		<i>Trichuris</i> sp.	6(42.85%)	7(31.70%)	0.574	0.449
11.	Cestode	<i>Moniezia</i> sp.	0(0%)	6(14.63%)	-	-
12.	Trematode	<i>Paramphistomum</i> sp.	0(0%)	1(2.43%)	-	-

*= Fisher exact test accepted due to less than five expected value

From the analysis it showed that the transmission of parasites between Red Panda and livestock were possible. To know the parasites sharing groups with Red Panda, livestock were categories into cattle and goat/sheep. Morphologically similar parasitic egg/ cyst and larvae were compared.

4.3.3 Comparison of GI parasites in between Red Panda and Cattle

Prevalence of GIT parasites in between Red Panda and Cattle were also compared. Incase of protozoan parasites, highest prevalence rate showed by *Eimeria* with micropyle (64.28%) and (47.61%) in Red Panda and Cattle respectively while *Entamoeba* sp., *Eimeria* without micropyle and *Balantidium* sp. showed almost equal prevalence rate in Red Panda and cattle. Statistically, there was not significant difference in prevalence of all intestinal protozoan parasites between Red Panda and Cattle (Table: 9).

Among the seven genera of nematode, 100% and 90.47% prevalence rate showed by *Oxyuris* sp. in Red Panda and cattle respectively. *Ascaris* sp. showed equal and *Strongyloides* sp., Hook worm, *Trichostrongylus* sp. and *Trichuris* sp. Showed almost equal prevalence rate in Red Panda and cattle. Statistically, there was not significant difference in prevalence of intestinal nematode in between Red Panda and Cattle (Table: 9).

Table 9: Prevalence of gastro-intestinal parasites in Red Panda and cattle

S.N	Class	Parasites	Prevalence in Red Panda	Prevalence in cattle	X ² -Value	P-value
1.	Sarcodina	<i>Entamoeba</i> sp.	8(57.14%)	7(53.84%)	1.944	0.163
2.	Sporozoa	<i>Eimeria</i> with micropyle	9(64.28%)	10(47.61%)	0.940	0.332
		<i>Eimeria</i> without micropyle	8(57.14%)	13(61.53%)	0.079	0.778
3	Litostimatidea	<i>Balantidium</i> sp.	2(14.28%)	2(9.52%)	0.188	1.00*
4	Nematoda	<i>Oxyuris</i> sp.	14(100%)	19(90.47%)	1.414	0.506*
5		<i>Strongyloides</i> sp.	7(50%)	10(47.61%)	0.019	0.890
6.		Hook worm	5(35.7%)	9(42.85%)	0.179	0.673
7		<i>Trichostrongylus</i> sp.	7(50%)	11(52.38%)	0.19	0.778

8.		<i>Ascaris</i> sp.	8(57.14%)	12(57.14%)	0.00	1.00
9.		<i>Trichuris</i> sp.	7(42.85%)	8(38.09%)	0.079	0.778
10.		<i>Crenosoma</i> sp.	6(42.85%)	0	1.414	0.506*

*= Fisher exact test accepted due to less than five expected value

4.3.4 Comparison of GI parasites in between Red Panda and Goat/Sheep

In the comparison of prevalence of protozoan parasites in between Red Panda and Goat and Sheep; among the four protozoan parasites, *Eimeria* with micropyle (64.28%) showed the highest prevalence rate followed by *Eimeria* without micropyle and *Entamoeba* sp. showed equal rate and *Balantidium* sp. in case of Red panda and like Red Panda *Eimeria* without micropyle (61.53%) also dominant in Goat and Sheep followed by *Eimeria* with micropyle but *Entamoeba* sp. and *Balantidium* sp. was absent. Statistically, there was no significant difference in prevalence of GIT protozoan parasites (*Eimeria* with micropyle without micropyle and *Balantidium* sp.) where as significant difference in prevalence of *Entamoeba* sp. (Table: 10).

Incase of nematode genera, prevalence rate of Red Panda was same that mentioned previously and incase of Goat and Sheep, *Oxyuris* (84.62%) also showed the highest prevalence rate and followed by *Strongyloides*, *Ascaris*, *Trichostrongylus*, Hook worm and *Trichuris* where as *Crenosoma* sp. was absent. Statistically, there was no significant difference in prevalence of nematode parasites except *Crenosoma* which was significant difference (Table: 10).

Table 10: Prevalence of gastro-intestinal parasites in Red Panda and goat/sheep

S.N	Class	Parasites	Prevalence in Red Panda	Prevalence in Goat and Sheep	X ² -Value	P-value
1.	Sporozoa	<i>Eimeria</i> with micropyle	8(57.14%)	7(53.84%)	0.304	0.581
		<i>Eimeria</i> without micropyle	9(64.28%)	8(61.53%)	0.054	0.581
2	Sarcodina	<i>Entamoeba</i> sp.	8(57.14%)	0	10.556	0.002*
3	Litostomatea	<i>Balantidium</i> sp.	2(14.28%)	0	2.006	0.481*
4	Nematoda	<i>Oxyuris</i> sp.	14(100%)	11(84.61%)	2.326	0.222*
5.		<i>Strongyloid</i> sp.	7(50%)	8(61.53%)	0.363	0.547
6.		Hook worm	5(35.71%)	5(38.46%)	0.22	0.883
7.		<i>Trichostrongylus</i> sp.	7(50%)	6(46.15%)	0.40	0.842
8.		<i>Ascaris</i> sp.	8(57.14%)	7(53.84%)	0.30	0.863
9.		<i>Trichuris</i> sp.	6(42.85%)	5(38.46%)	0.054	0.816
10.		<i>Crenosoma</i> sp.	6(42.85%)	0	7.163	0.016*

*= Fisher exact test accepted due to less than five expected value

4.3.5 Parasitic Mixed infection in between Red Panda and Livestock

Multiple infection was most prevalent in both Red Panda and Livestock but slightly high in Red Panda than Livestock and followed by triple infection which also slightly increase in Red Panda than Livestock. Single and double infection were not observed in Red panda while double infection was encountered in livestock (Fig:6).

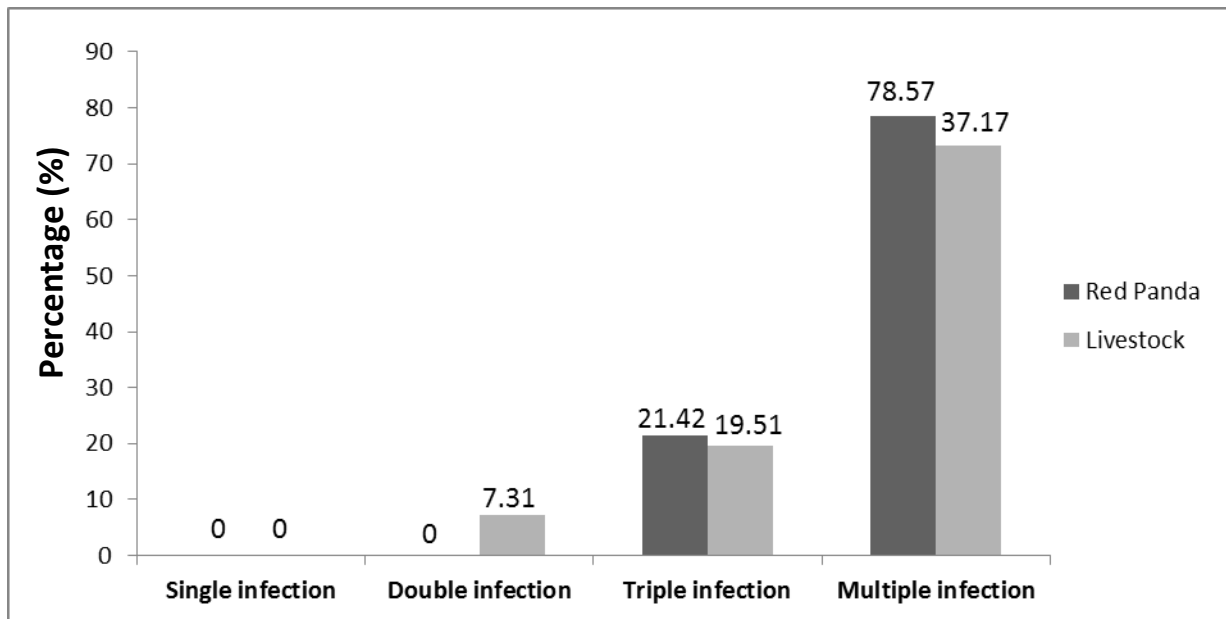


Fig: 7 Comparative analysis of mixed infection in between Red Panda and livestock

The prevalence of trematode and cestode were not statistically compared due to low rate and absence in Red Panda.

The common parasitic genera of Red Panda and livestock showed higher prevalence compared to host-specific genera, which suggesting that cross-transmission of parasites between the livestock and Red Panda was possible.

4.4 Diameter of Eggs/Cysts of Different GI Parasites of Red Panda and Livestock

In the present study, the diameter (length by with) of eggs/cysts of different gastrointestinal parasites were measured which is given below;

➤ ***Eimeria* sp.**

Diameter of oocyst of *Eimeria* sp. was $35.5 \pm 19.5 \mu\text{m}$ according to without micropyle while $27 \pm \mu\text{m}$ with micropyle. Eggs are small in size, pink in colour and contain morula which is located centrally or sub-centrally filled up. Micropyle occurs in one side.

➤ ***Entamoeba* sp.**

Cysts are small, rounded or spherical in shapes having four nucleus and measure $20 \pm 6 \mu\text{m}$ in diameter.

➤ ***Balantidium* sp.**

The trophozoid is oval shape, present of cilia, kidney shaped macronucleus and measures $30 \pm 10 \mu\text{m} \times 20 \pm 5 \mu\text{m}$ while cyst are circular and measures $25 \pm 7 \mu\text{m}$.

➤ **Hook Worm**

Ova have a thin hyaline shell bluntly rounded at the ends. They usually are in the 4-8 cells stages and developing ovum fill the shell and measures $65 \pm 10 \mu\text{m} \times 30 \pm 5 \mu\text{m}$.

➤ ***Trichostrongylus* sp.**

An egg are $90 \pm 10 \times 48 \pm 12 \mu\text{m}$ in size, oval or kidney bean shaped with thin and transparent outer shell and wrinkled inner membrane, bilaterally symmetrical, colourless, central mass usually in 8- 12 cell stages or multisegmented and varies from 16-32 in numbers. The space between the egg shell and embryonic mass is relatively conspicuous. One side is more rounded than other or somewhat both sides rounded.

➤ ***Ascaris* sp.**

Eggs are $31.5 \pm 7.5 \mu\text{m}$ in size, nearly spherical, yellowish brown, granular contents and unsegmented, thick aleveolated albuminous shell.

➤ ***Strongyloides* sp.**

Eggs are small, measure $130 \pm 30 \times 52.5 \pm 7.5 \mu\text{m}$ in size, oval with rounded edges or ellipsoidal, thin shelled and contain fully developed larvae that can be seen under low power.

➤ ***Trichuris* sp.**

An eggs are in $55 \times 30 \mu\text{m}$ size, contains unsegmented embryo, brown in colour, barrel shaped with a transparent plug at either pole.

➤ ***Oxyuris* sp.**

Eggs are bean and oval shaped having segmented embryonic mass surrounded by stiky fluide and measure $112.5 \pm 7.3 \times 55.5 \pm 19.5 \mu\text{m}$ in size.

➤ ***Moniezia* sp.**

Eggs are triangular or quadriangular in shaped, somewhat irregular having a circular or pear shaped (pyriform) apparatus at one end and measure $45 \pm 4.5 \mu\text{m}$ in size.

➤ ***Paramphistomum* sp.**

The eggs of it is $96 \pm 5 \times 52 \pm 7.5 \mu\text{m}$ in size, operculum in one pole, pale grey or greenish in colour, contains five blastomeres sirrounded by about 50 yolk cells, morula located centrally or somewhat subcentrally.

➤ ***Crenosoma* sp.**

Eggs are 0.070 - 0.076 mm long and 0.050 - 0.052 mm wide First-stage larvae are $310 \pm 40 \mu\text{m}$ long, and $16 \pm 5 \mu\text{m}$ wide These larvae have a slightiy blunt, rounded anterior end, whereas the tail tapers noticeably into a point, with a slight deflection just before the tip.

Comparative photos of Parasites of Red Panda and Livestock

Protozoan parasites:

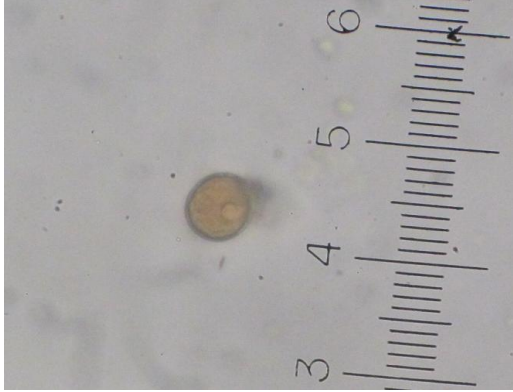
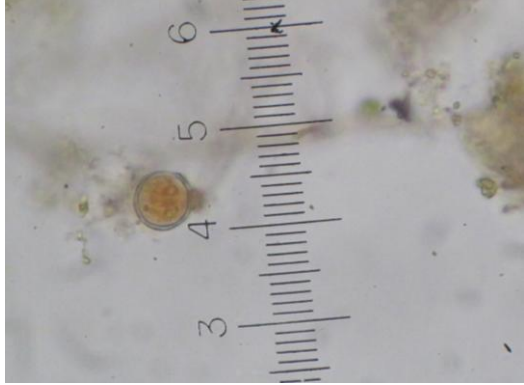
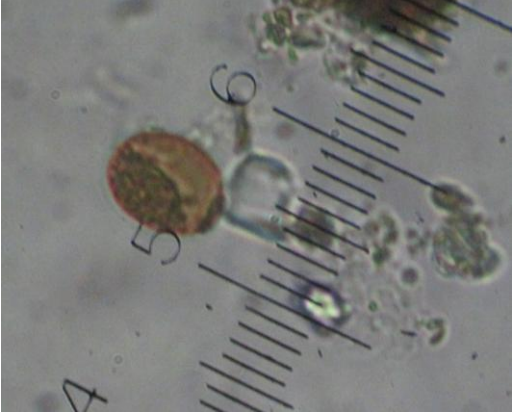
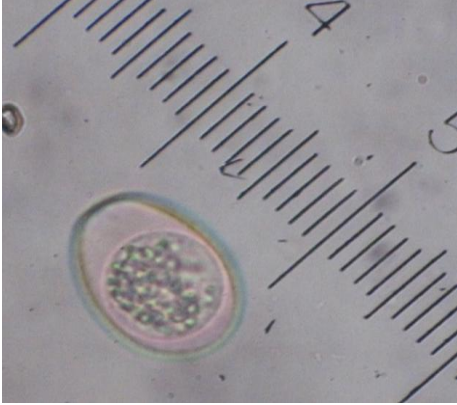
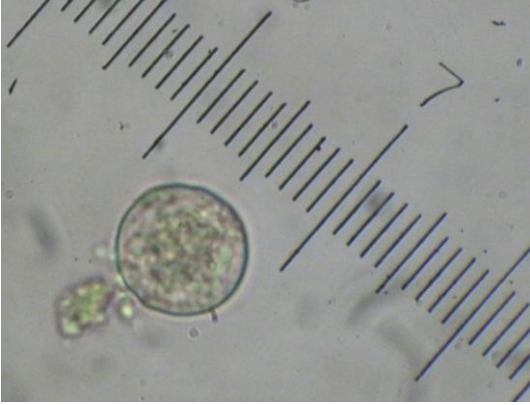

Parasites of Red Panda	Parasites of Livestocks
 <p data-bbox="188 719 587 752">Photo 14: <i>Entamoeba</i> sp. (18µm)</p>	 <p data-bbox="826 712 1225 745">Photo 15: <i>Entamoeba</i> sp. (18µm)</p>
 <p data-bbox="188 1205 659 1238">Photo 16: <i>Eimeria</i> with Micropyle (21µm)</p>	 <p data-bbox="826 1193 1297 1227">Photo 17: <i>Eimeria</i> with Micropyle (31µm)</p>
 <p data-bbox="188 1682 703 1715">Photo 18: <i>Eimeria</i> with out Micropile (21µm)</p>	 <p data-bbox="826 1671 1334 1704">Photo 19: <i>Eimeria</i> without Micropile (33µm)</p>



Photo 20: *Balantidium* sp. (30 μ m)

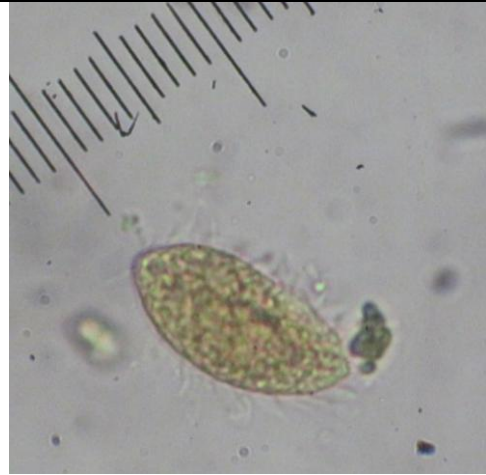


Photo 21: *Balantidium* sp. (33 μ m)

Nematode parasites:





Parasites of Red Panda	Parasites of Livestocks
	
<p>Photo 22: <i>Oxyuris</i> sp. (105μm)</p>	<p>Photo 23: <i>Oxyuris</i> sp. (69μm)</p>
	
<p>Photo 24: <i>Strongyloides</i> sp. (155μm)</p>	<p>Photo 25: <i>Strongyloides</i> sp. (135μm)</p>



Photo 26: Larva of *Strongyloides* (245 μ m)



Photo 27: Larva of *Strongyloides* (270 μ m)



Photo 28: *Crenosoma* sp. (360 μ m)

Absent

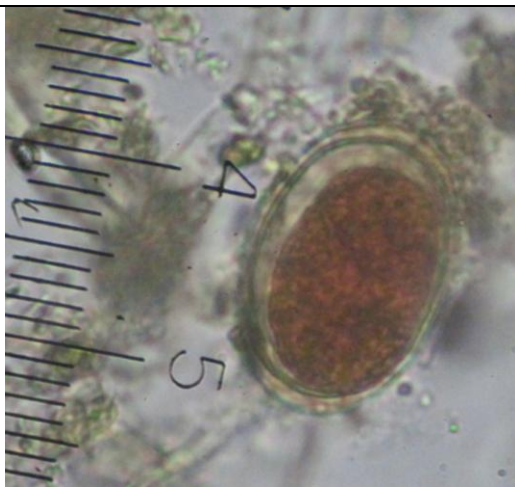


Photo 29: Hook Worm (45 μ m)

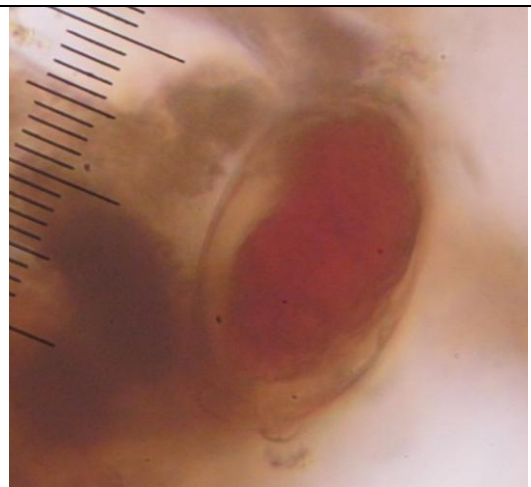


Photo 30: Hook Worm (54 μ m)

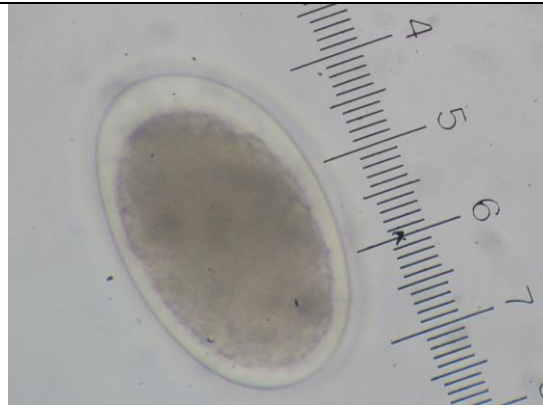


Photo 31: *Trichostrongylus* sp. (96 μ m)



Photo 32: *Trichostrongylus* sp. (103 μ m)

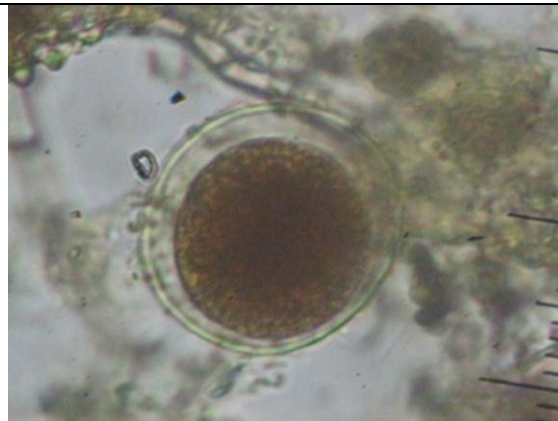


Photo 35: Corticated egg of *Ascaris* (38 μ m)

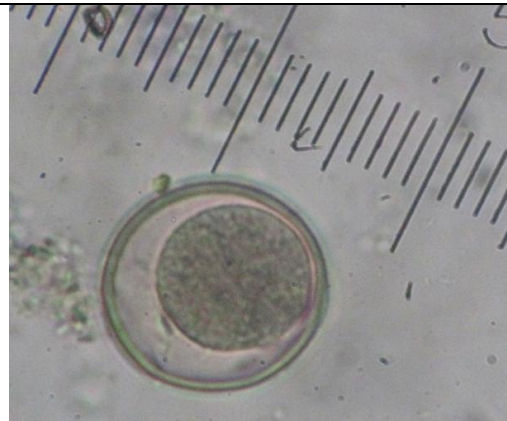


Photo 36: Corticated egg of *Ascaris* (31 μ m)

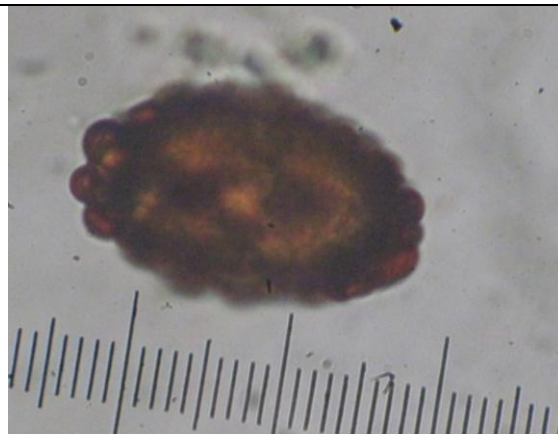


Photo 37: Decorticated egg of *Ascaris* (72 μ m)

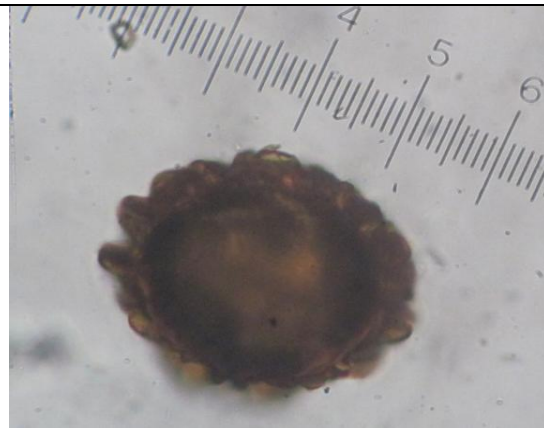


Photo 38: Decorticated egg of *Ascaris* (91 μ m)

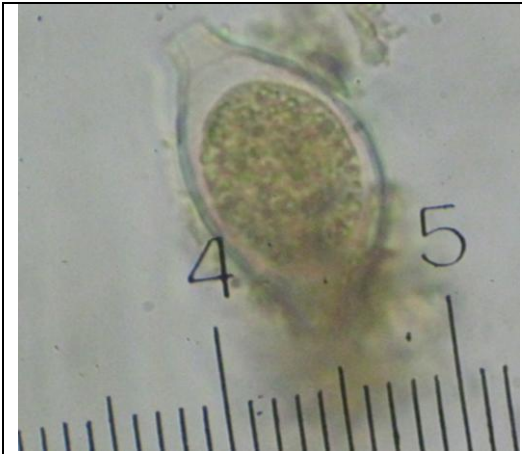


Photo 39: *Trichuris* sp. (48 μ m)



Photo 40: *Trichuris* sp. (63 μ m)

Cestode:

Absent



Photo 41: *Moniezia* sp. (47 μ m)

Trematodes:

Absent

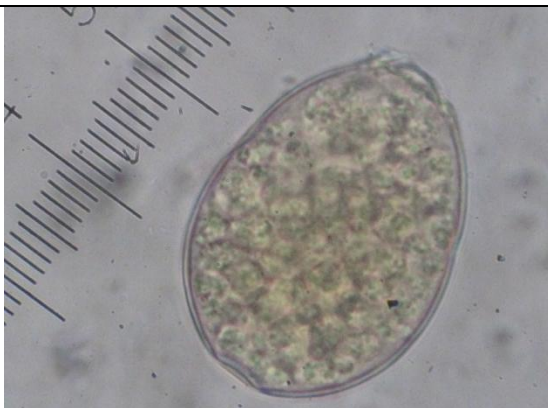


Photo 42: *Paramphistomum* sp. (92 μ m)

5. Discussion

Red Panda inhabits temperate broadleaved forest with bamboo in the understory with an altitudinal range preference of 2200-4000 m with less numbers and nearly extinction (Roberts and Gittleman 2009). Forest fire, livestock grazing, slash and burn cultivation, timber and fire wood collection, predation by dogs, natural dying of ringal bamboo species, drought, landslide, lack of awareness and diseases are identified as the major conservation threats for Red Panda. The origin of any types of diseases are the parasitic infection. Parasites are transmitted through direct contact or indirect methods (food, water, air etc). Sharing the same pasture mean the sharing the same food, water and air. So sharing the same pasture by wild and domestic animals means may be the sharing the same types of parasites. Livestocks and wild animals are suffering from different types of parasite and they shed parasites by defecation, urination etc. and when another animals come in contact with that area they become infected. Most of the protozoans are not imported and causes poor body condition but helminth parasites can causes death of the animals. Parasites are the neglected topic but imported in conservation aspect.

The present study revealed that high prevalence of gastrointestinal tract (GIT) parasites in both Red Panda and livestock. Both Red Panda and livestock share the same parasite species with different levels of infection. The prevalence of GIT parasites were highest in Red Panda compared to livestock (Farooq et al. 2012). While livestock had shown high parasitic prevalence in compared to Red Panda.

A total of 14 faecal samples of Red Panda and 41 samples of livestock were collected from the community forest of Illam and examined by concentration methods. All the samples of both Red Panda and livestock were found to be positive either for protozoan or helminths. This prevalence rate of Red Panda was almost similar as compared to 93.02% reported in Red panda from Rara National Park (RNP) (Shrestha et al. 2015) and 100% in Kothi Bhir community area (KBCA), Rolpa (Lama et al. 2015). But higher than the reports of Bartelsen et al. (2010) and Pradhan et al. (2011) which showed 35% and 46.66% parasitic infection from European zoo and Darjeeling, India respectively. The prevalence of gastrointestinal parasites of livestock in this study was similar with report of Bandyopadhyay et al. (2010) who reveal 92.4% prevalence rate in India and the prevalence was higher as compared to

81.82%, 28.25%, 66.29% observed by Byanju et al. (2011), Laha et al. (2012) and Shirale et al. (2009) respectively. High prevalence of parasites in Red panda and livestock clearly indicates that the parasites shared between them probably due to sharing the same pasture area.

From the economic and sanitary point of view, coccidian parasites are the most prevalent among protozoa. Coccidian parasite infects large number of wild animals including Red Panda and Raccoons. Coccidia are considered to have direct one-host fecal-oral-intestinal life cycles of little biological and public health importance. *Eimeria* is the most common Coccidian parasites among wildlife and livestock. The high prevalence rate of *Eimeria* infection has been reported from various researchers of America from Raccoons which is more closely related to Red Panda. There are two distinct groups of *Eimeria* infecting Red Panda with micropyle and without micropyle on the basis of morphological structure. According to previous study, *Eimeria* can't be differentiating into species level since it required culture to identify the species of this parasite. The prevalence of *Eimeria* with micropyle and without micropyle in Illam almost similar with *Eimeria* reported from RNP (Shrestha et al. 2015). High prevalence of *Eimeria* infection has been also reported from Raccoons of America (Dubey et al. 2000, Wright and Gompfer 2005, Dubey 1982, Foster et al. 2004, and Adams et al. 1981). Large number of livestock were also shown to be infected (Byanju et al. 2006, Ntonifor et al. 2013, Kanyari et al. 2009, Swai et al. 2006, Bui et al. 2009). In the present study, *Eimeria* was found to be 64.28% which was higher than 35% and 48% observed by Kanyari et al. (2009) in sheep and goat respectively, 17.8% by Laha et al. (2012) and 20.9% by Ntonifor et al. (2013) and lower than 85.7% (Apio et al. 2013) and 76.5% (Matsubayashi et al. 2009).

Almost similar prevalence of *Eimeria* in Red Panda and livestock may be due to the herbivorous food habitat of Red Panda sharing the same grazing area with livestock.

Other coccidian parasites such as *Isospora* sp., *Cryptosporidium* sp. and *Cyclospora* sp. have been reported from various other wild mammals including Raccoons (Taylor et al. 2007) and Red Panda (Lama et al. 2015). *Isospora* sp. and *Cryptosporidium* sp. are also absent in livestock.

Besides the coccidian parasites, the Red Panda were found to be infected with two other protozoan parasites, *Entamoeba* sp. and *Balantidium* sp. Amoebic dysentery, an intestinal disease caused by infection with the protozoan parasite *Entamoeba* sp. is an important disease of man and animals throughout the world. *Entamoeba* sp. had also been reported from Red Panda of RNP (Shrestha et al. 2015). In both RNP and Illam, Red Panda were infected with more than 50% by *Entamoeba* species. *Entamoeba* is causative agent of amoebiosis among livestock it has been reported from cattles of Kenya (Kanyari et al. 2009). In the present study, this parasite is also reported in cattle with prevalence rate 21.95% which was found to be less than 87% and 77% in Sheep and Goat by Kanyari et al. (2009) and 83% by Paul et al. (2010) in cattle. The prevalence of *Entamoeba* in Red Panda was higher than livestock it was may be due to behavioral and genetic factors associated in Red Panda and livestock (Gillespie et al. 2005).

Balantidium coli is the ciliate zoonotics protozoan parasites. Non-human primates have been considered the most important reservoirs for human infection (Walzer and Healy 1982, Nakauchi 1999). *Balantidium* sp. has been reported from White-handed gibbon (*Hylobates lar*), squirrel monkey (*Saimiri sciurea*), Japanese macaque (*Macaca fuscata*), wild boar (*Sus scrofa*) and chimpanzee (*Pan troglodytes*) from Japan (Nakauchi 1999). This is the first case to report the *Balantidium* sp. in Red Panda in the global context with prevalence rate 14.28%. The prevalence of *Balantidium* sp. in livestock during the present study was lowest (7.31%) than other protozoans which is similar to Kanyari et al. (2009) who reported 2% and 3% prevalence in sheep and goat, 1.6% and 6.6% in cattle by Uysal et al. (2009) and Paul et al. (2010) respectively. *B. coli* was reported in pig by Ismail et al. (2010), Weng et al. (2005) and Carneri 1972 observed 64.7% , 47% and 58% prevalence which was greater than prevalence of this study. The greater prevalence may be due to many food or water resources can become polluted because pandas defecate while feeding (Zhang and Wei 2006).

The first report on isolation and maintenance of *B. coli* was done by Barrett and Yarbroug (1921) in animals. *B. coli* are a ciliated and a normal inhabitant of intestine of wild and domestic animals, probably capable of becoming somewhat pathogenic under favorable condition. It has been identified by Varadharajan and Kandasamy (2000) from India, Hossain (2012) from Bangladesh. The infection of *B. coli* may be due to the contamination of water or food with cyst in the grazing area (Schuster and Ramirez 2008).

Generally wild animals become infected with nematode, cestode and trematode helminth parasites. To compared the life cycle of cestode and trematode, a suitable intermediate host is required but not for most of the nematode parasites. Interestingly, Red Panda of Illam were found infected with only nematode parasites but livestock were infected by cestode and trematode too.

However the trematode, *Ogmocotyle ailuri* was previously described from Red Panda at a zoo in the America (Price 1954 and 1960). *O. ailuri* also isolated from the small intestine of Taiwanese monkey (*Macaca cyclopis*) (Yoshimura et al.1996) and Japanese monkey (*Macaca fasciculata*) (Iwaki et al. 2012).

Another trematode, *Heterobiharzia americana* also recorded in Archer and Wichita countries of north central Texas and overall prevalence was 47.2% (Kelley 2010) and other trematodes *Alaria* sp., *Digenea* sp. and *Eurytrema procyonis* were observed in Raccoon (Wright and Gompper 2005). Prevalence of trematode were found 13% in Red Panda from KBCA (Lama et al. 2015) but genera was unidentified. Absent of trematodes in present study might be due to absent of suitable intermediate host in Illam. Trematode infection was most common among livestock (Bandyopadhyaya et al. 2010, Yadav and Tando 1989, Byanju et al. 2011, Kanyari et al. 2009, Choudhary et al.1993, Pathak 2011).

Cestode infection in Red Panda (Lama et al. 2015) had shown from KBCA similarly the Red Panda of RNP have been reported to be infected with *Moniezia*, a common herbivore cestode parasite but none of the Red Panda samples collected from Illam were positive. However three genera of cestode had been reported from Raccoon in Archer and Wichita countries of North Central Texas including *Atrioenia procyonis*, *Mesocestoides* spp., *Taenia pisiformis* (Kelley and Horner 2008). The cestode spp. described from cattle includes *Moniezia* (Horak et al. 2004, Kanyari et al. 2009, Laha et al. 2012, Rafiullah et.al. 2011), and *Taenia* (Bui et al. 2009). In the present study, only one cestode, *Moniezia* was recorded in cattle with prevalence rate 14% which was almost similar with 21% and 16% observed by Kanyari et al. (2009) in sheep and goat 10% and 11% infection reported by Laha et al., (2012) and Farooq et al. (2012) in cattle and higher than 0.65% and 0.48% revealed by Rafiullah et al. (2011) in male and female cattle respectively.

Altogether seven genera of nematodes in Red Panda and six genera of nematodes in livestock were observed from Illam community forest. Among them *Oxyuris* sp. showed the 100% prevalence rate in Red Panda which was highest than 58.14% recorded by Shrestha et al. (2015). The highest prevalence rate of *Oxyuris* may be due to the cool climate of the area. Cool climate is suitable for the development of *Oxyuris* larva. The parasite was observed equally high prevalence (87.8%) in livestock too.

Generally round worm of Red Panda are considered as *Balyascaris* but due to the indistinguishable shape and size, they are simply consider here as *Ascaris*. *Balyascaris* is an important intestinal nematode of Red Panda as well as Raccoon. This parasite had been recorded from Spain in white-headed lemurs (*Eulemur albifrons*) (Martinez et al., 2015), North America (Kazacos, 2001) Germany (Bauer et al. 2011). In this study the prevalence of *Ascaris* was found 57.14% which was higher than 38.88% and 13.04% prevalence rate of *Balyascaris* reported in Red Panda from Rara National Park, Mugu, Nepal (Shrestha et al.2015) and Kothi Bhir Community area, Rolpa, Nepal (Lama et al.2015) respectively. *Balyascaris* is found in Red Panda, Giant Panda, Raccoon, Cat, Dog etc. Nematodes like, *B. procyonis*, *Capillaris acrophili*, *C. plica*, *C. procyonis*, *C. putorii* and *Placoconus lotoris* had been reported in Raccoons from Southern New York (Wright and Gompper 2005). Similarly, *B. procyonis* was also reported in Raccoons from Western North Carolina (Hernandez et al. 2012). The highest prevalence rate were recorded from North-Eastern, mid-western, mid-Atlantic, some western states (California, Washington, Oregon and Colorado) and some region of Texas (Kazacos 2001, Long et al. 2006, Chavez et al. 2012). In more than 85% of cases infections have no symptoms, especially if the number of worms is small. During the study, the prevalence of *Ascaris* in livestock was 57.14% which agree with 57% recorded by Awraris et al. (2012) in Ethiopia and greater than 1.5%, 25.9%, 17.6%, 14.7% and 3.7% recorded by Chowdhury et al. (1993), Tomass et al. (2013), Ismail et al. (2010), Matsubayashi et al. (2009) and Uysal et al. (2009). Almost equal prevalence rate was observed in between Red Panda and livestock but it is indistinguishable between *Ascaris* found in Red Panda and livestock.

During the study, *Trichostrongylus* sp. was recorded for first time from Red Panda in the global context. The prevalence of *Trichostrongylus* sp. and *Strongyloides* sp. in Red Panda was found 41.46% and 50% respectively. *Strongyloides* sp. had been recorded in Red Panda by Shrestha (2015) and prevalence was low compared to present study. The parasite was

already recorded in American Raccoons from New York (Wright and Gompper 2005). In case of livestock, the parasite has been reported in Kenya (Kanyari et al. 2009), India (Laha et al. 2012), Pakistan (Rafiullah et al. 2011), Tanzania (swai et al., 2006) and Nigeria (Bui et al. 2009) with prevalence rate 13%, 25.13%, 4.21%, 20% and 11% respectively. The prevalence rate of *Strongyloides* sp. was higher (53.65%) as compare to all previous finding rate. The prevalence of *Trichostrongylus* sp. was found 41.46% which was higher than 13.83% and 16.24% infection recorded by Rafiullah et al. (2011) in male and female cattle respectively and lower than 55.8% recorded in goat and higher than 28.8% and 9.7% observed in sheep and cattle by Ntonifor et al. (2013). This result showed that Illam community forest was highly contaminated with *Strongyloides* and *Trichostrongylus* eggs both from Red Panda and livestock.

Trichuris is another common nematode parasite prevalent in both wild and domestic animals. The parasite has been reported from RNP (Shrestha 2015) and KBCA (lama et al. 2015). The prevalence of *Trichuris* was 42.85% which was higher than 4.65% and 26.08% recorded by Shrestha et al. (2015) and Lama et al. (2015) respectively. High worm load may cause growth retardation, anemia and hemorrhagic diarrhea (Hale and Stewart 1979). *Trichuris* sp. have been infecting large number of livestock (Horak et al. 2004, Yadav and Tendon 1989, Byanju et al. 2011, Kanyari et al. 2009, Bui et al. 2009, Laha et al. 2012, Rafiullah et al. 2011). In the present study, *Trichuris* sp. (31.70%) was isolated from cattle. The prevalence of *Tichuris* sp. was comparatively higher than 2%, 13.08%, 5.27%, 2.6% recorded by Kanyari et al. (2009), Laha et al. (2012), Rafiullah et al. (2011) and Bui et al. (2009) respectively.

Crenosoma spp. is the *Metastrongylus* lungworm infecting wild and domesticated canids in Europe (Morgan et al. 2005, Traversa et al. 2010). Recently, emergence of this parasite was observed in several European countries (Traversa et al. 2010) due to population increase and urbanization of Red foxes (*Vulpes vulpes*) (Deplazes et al. 2004) which is the major reservoir hosts of this parasite in Europe. The prevalence of *Crenosoma* was found 42.85% in Red Panda which was almost similar 34.88% by Shrestha et al. 2015 Rara National Park, Mugu, Nepal and higher than 4.3% from European zoos (Bertelsen et al. 2010). Hook Worm infection has been reported from Red Panda of RNP (Shrestha et al. 2015) with prevalence rate 44.19% which was almost similar with present study which revealed 35.7%. Hookworms are cosmopolitan in distribution (Bowman et al. 2003) and can be transmitted orally but also

by cutaneous penetration and cause high mortality in animals and human (Hotez et al. 2004). *Crenosoma* spp. was not observed in cattle because it is the parasites of carnivore.

Angiostrongylus vasorum was recorded in Red Panda from different countries. It is a most important lungworm which causes pathogenic pneumonia to Red Panda. *A. vasorum* was recorded from Denmark, U.K and European zoos by Bolt et al.1992, Janet et al. 2009, Bertelsen et al. 2010) respectively. *Angiostrongylus* sp. was also reported in Nepal (Lama et al. 2015 and Shrestha 2015) but during this study *A. vasorum* was not recorded. Several nematodes like, *Dirofilaria* spp., *Toxocara* spp., *Trichinella* spp. are important nematode parasites to carnivores and omnivorous which was reported in Red Panda from different parts of the World (Chowdhary 2001, Lan et al. 2012, Neiffer et al. 2002). This parasite was negative in Red Panda and domestic animals of Illam community forest.

Aelurostrongyloid spp. have been reported in carnivora by different researchers in global and national context. In the present study, none of these nematodes were isolated in the faecal matter of Red Panda of Illam community forest, Nepal. Some reports have been indicated the presence of *Toxocara* spp., *Bunostomum* spp., *Haemonchus* spp., *Oesophagostomum* spp., *Cooperia* spp., *Ostertagia* spp. etc from cattle (Hoorak et al. 2004, Bandyopadhyay et al. 2010, Bilal et al. 2009).

Among 14 samples, multiple infection was found to be highest (78.57%) in Red Panda followed by double (21.42%) which was similar with Shrestha et al. (2015). No single infection was observed during study. Mixed infection 52.78% and single infection 47.23% were recorded by Byanju et al. (2011). Bui et al. (2009) observed double infection (9.7%) and triple infection (1.3%) which was lower than the present study.

The intensity of different parasites in Red Panda of Illam community forest were observed in this study. According to result maximum number of Red Panda were found to be infected with light infection. Some of the faecal samples of Red Panda found to be positive for heavy infection by *Eimeria*, *Oxyuris*, *Trichostrongylus* and *Ascaris*. The heavy infection indicates symptomatic condition causing serious diseases in Red Panda. The result of present study was similar to the report of Shrestha (2012).

6. Conclusion and Recommendations

6.1 Conclusion

Overall result revealed that all the Red Panda of Illam community forest were found infected with protozoan and helminth parasites. Three genera of protozoan parasites were identified infecting Red Panda among them *Eimeria* sp. showed the highest prevalence followed by *Entamoeba* sp. and *Balantidium* sp. In case of helminth parasites only nematodes were observed. *Oxyuris* sp. showed 100% prevalent followed by *Ascaris* sp. (57.14%), *Strongyloides* sp. and *Trichostrongylus* sp. (50%), *Crenosoma* sp. and *Trichuris* sp. (42.85%) and Hook worm (35.7%). Multiple infection (78.57%) was more common in Red panda followed by triple (21.42%) while single infection was absent. In case of intensity rate, maximum number of Red Pandas were found to be infected with light infection followed by mild, modred and heavy.

Almost similar rate of protozoan and helminth parasites were recovered from livestock which share the same pasture land as Red Panda. Cow, Goat, Horse, Sheep, Yak and Buffalo were found to be infected by *Eimeria* sp. while *Entamoeba* sp. was found in Cow, Horse and Buffalo but prevalence of *Balantidium* sp. was reported in Cow and Horse only. Among the helminth, nematode parasites showed the highest prevalence while cestode and tematode infection were relatively low. Eight different parasitic helminth were identified in livestock such as *Oxyuris* sp., *Ascaris* sp., *Strongyloides* sp., *Trichostrongylus* sp., *Trichuris* sp., Hook worm among nematodes, *Moniezia* sp. among cestoded and *Paramphistomum* sp. among trematode. Out of all these parasites, *Oxyuris* sp. showed the highest prevalence in all the domestic animals; 90%, 88.88%, 80% and 75% in cow, goat, horse and sheep respectively. Infection of *Strongyloides* sp. revealed heavy in horse (80%) followed by goat (66.66%) and 50% in each of cow and sheep. *Trichuris* sp. was absent in horse and in other animals prevalent almost equal, 40% and 44.44% in cow and goat while 25% in sheep. Prevalence of Hook worm was highest (50%) in sheep and lowest (20%) in horse which revealed similar result for *Trichostrongylus*. *Ascaris* showed dominant parasites for horse followed by goat, cow and sheep. Prevalence of *Moniezia* and *Paramphistomum* in cattle was 14.63% and 2.43% respectively. Multiple infection was dominant (73.77%) in livestock followed by triple (19.51%) and double infection (7.31%).

Present study revealed the prevalence of some protozoan and helminth parasites common to Red Panda and livestock, where helminths were more prevalence compared to protozoa. Among the protozoan parasites *Eimeria* sp., *Entamoeba* sp., and *Balantidium* sp., shared a higher prevalence in Red panda and cattle as well as Red Panda and goat/ sheep. Similarly, *Oxyuris* sp., Hook worm, *Strongyloides* sp., *Trichuris* sp., *Ascaris* sp., and *Trichostrongylus* sp., were found morphologically similar in both animals.

Statistical analysis showed that all these helminth parasites can be shared between Red Panda and livestock particularly from cattle and sheep /goat to Red Panda and vice-versa. *Crenosoma* sp. seen to be Red Panda specific which was not shared in livestock. Similarly, cestode and trematode parasites found in livestock were not found in Red Panda.

6.2 Recommendations

On the basis of conclusion following recommendations have been made to reduce the risk of gastrointestinal parasitic transmission between Red Panda and livestock.

- Morphologically similar parasites were compared in between Red Panda and livestock but verification or identification should be done in molecular basis.
- Considering the detection of several zoonotic parasites, investigation of the role of human being in the transmission of zoonotic parasites in between Red Panda, livestock and other wildlives has been recommended.
- It is recommended to establish veterinary laboratory in the study area in order to carry out continuous diagnosis, surveillance and to prevent loss of samples during transportation as well as for prompt laboratory work without loss of samples.
- Red panda habitat should be strictly prohibited for grazing of domestic animals.
- Red Panda conservation plans, specific for community forest must be develop for long term conservation of Red Panda.
- Livestocks grazing area should be well manage and separated from Red Panda habitat.

7. References

- Abad, B.O. and Torgerson, P.R. 2013 A Systematic Review of the Epidemiology of Echinococcosis in Domestic and Wild Animals. *PLOS Neglected Tropical Diseases* **7**(6): e2249
- Abayneh, T., Gebreab, F., Zekarias, B. and Tadesse, G. 2002. The potential role of donkeys in land till age in central Ethiopia. *Bulletin of Animal Health and Production in Africa* **50**: 172-178.
- Adams, J.H., Levine, N.D. and Todd, K.S. 1981. *Eimeria* and *Ssarcocystis* in raccoons in Illinois. *Journal of Protozoology* **28**(2): 221-222.
- Agosta, S.J., Janz, N. and Brooks, D.R. 2010. How specialists can be generalists: resolving the “parasite paradox” and implications for emerging infectious disease. *Zoologia* **27**: 151–162.
- Ainsley, R., Rebecca, P., William, L.S., and Karen L.K. 2012. Gastrointestinal Parasites in Road-Killed Raccoons and Opossums in Western Maryland. *Journal of Student Research* **1**(3): 28-30.
- Akhter, R. and Arshad, M. 2006. Arid rangelands in the Cholistan desert (Pakistan). *Secheresse* **17**: 210–217.
- Altizer, S. Nunn, C.L. and Lindenfors, P. 2007 .Do threatened hosts have fewer parasites? A comparative study in primates. *Journal of Animal Ecology* **76**: 304–314.
- Apio, A., Mohammed, O.B. and Omer, S.A. 2013. Cross infection with GIT parasites between goat and Farasan gazelle (*Gazella gazelle farasani*) in Farasan Islands, Saudi Arabia. *Journal of King Saud University science* **25**: 325-329.
- Awraris, T., Bogale, B. and Chanie, M. 2012. Occurrence of Gastro Intestinal Nematodes of Cattle in and Around Gondar Town, Amhara Regional State, Ethiopia. *Acta Parasitologica Globalis* **3** (2): 28-33.

Baeur, C. and Gey, A. 2002. Efficacy of six anthelmintics against luminal stages of *Baylisascaris procyonis* in naturally infected raccoons (*Procyon lotor*). *Veterinary Parasitology* **60**: 155-159.

Bandyopadhyay, S., Devi, P., Bera, A., Bandyopadhyay, S. and Bhattacharya, D. 2010. Prevalence of Gastrointestinal Parasite in Goats in Shillong, Meghalaya, India. *WebMed Central Parasitology* **1**(9):WMC00777.

Bandyopadhyay, S., Pal, P., Bhattacharya, D., Bera, A.K., Pan, D. and Rahman, H. (2010). A report on the prevalence of gastrointestinal parasites in yaks (*Bos poepagus*) in the cold desert area of North Sikkim, India. *Tropicle Animal Health Production* **42**(1):119-21.

Baral, N. and Heinen, J.T. 2005. The Maoist people's war and conservation in Nepal. *Politics and the Life Sciences* **24**: 2-11.

Barrett, H.P. and Yarbrough, N. 1921. A method for the cultivation of *Balantidium coli*. *Animal Jurnal Tropical Medicine* **1**: 161–165.

Barutzki, D. and Schaper, R. 2009. Natural Infections of *Angiostrongylus vasorum* and *Crenosoma vulpis* in Dogs in Germany (2007–2009). *Researchgate* **105**: 39–48.

Bauer, C. 2011. Baylisascariosis (*Baylisascaris procyonis*) – a rare parasitic zoonosis in Europe? *Berl. Munch. Tierarztl. Wochenschr* **124** (11–12): 465–472.

Berhanu, T., Nuraddis, I., Benti, D. and Tadele, T. 2014. Prevalence of Helminth Parasites of Horses in and Around Hawassa Town, Southern Ethiopia. *Acta Parasitologica Globalis* **5** (1): 07-11.

Bertelsen, M.F., Smith, M.F., Willesen, J.L., Jefferies, R., Morgan, E.R. and Monrad, J. 2010. Diversity and prevalence of metastrongyloid nematodes infecting the Red Panda (*Ailurus fulgens*) in European zoos. *Veterinary Parasitology* **172**: 299-304.

Bhir, T.P. 1998. *Crenosoma vulpir* and the domestic dog : A study of prevalence on prince Edwarded Island and of new diagnostic approaches. Msc. Thesis. Department of Pathology and Microbiology, University of Prince Edward Island, Canada.

Bilal, M., Hameed, A. and Ahmad, T. 2009. Prevalence of gastrointestinal parasites in Buffalo and Cow calves in rural areas of Toba Tek Singh, Pakistan. *The Journal of Animal & Plant Sciences* **19**(2): 67-70.

Birch, G.L., George, A.F. and William, G.D. 1994. Helminths of the Gastrointestinal Tract of Raccoons in Southern Illinois with Management Implications of *Baylisascaris procyonis* Occurrence. *Transactions of the Illinois State Academy of Science* **87**(3-4): 165-170.

Bista, D. and Paudel, R. 2015. An Overview of the Status and Conservation Initiatives of Red Panda *Ailurus fulgens* (Cuvier, 1825) in Nepal. *Suffrec*: 171-181.

Bolt, G., Monrad, J., Henriksen, P., Dietz, H.H., Koch, J., Bindseil, E. et al. 1992. The Fox (*Vulpes vulpes*) as a reservoir for canine angiostrongylosis in Denmark. Field survey and experimental infections. *Acta Veterinaria Scandinavica* **33**: 357–362.

Boomker, J., Keep, M.E. and Horak, I.G. 1987. Parasites of South African wildlife. I. Helminths of bushbuck, *Tragelaphus scriptus*, and grey duiker, *Sylvicapra grimmia*, from the Weza State Forest, Natal. *Onderstepoort Journal of Veterinary Research* **54**: 131–134.

Bowman, D.D., Rock, T., Heaney, K., Neumann, N.R., Ulrich, M. and Amodie, D. 2003. Persistent efficacy of moxidectin canine sustained-release injectable against experimental infections of *Ancylostoma caninum* and *Uncinaria stenocephala* in dogs. *Veterinary. Therapy* **4**: 228–233.

Brianti, E., Gaglio, G., Giannetto, S., Annoscia, G., Latrofa, M. S., Torres, F.D. 2012. *Troglostrongylus brevior* and *Troglostrongylus subcrenatus* (Strongylida: Crenosomatidae) as agents of broncho-pulmonary infestation in domestic cats. *Parasites and vectors* **5**(178):1-12.

Bui, A.A., Maimunatu, A. and Salamatu, A.F. 2009. A faecal survey of gastro intestinal parasites of ruminants on the University of Maiduguri Research Farm. *International Journal of Biomedical and Health Sciences* **5**(3): 115- 159.

Burnham, K.P., Anderson, D.R. and Laake, J.L. 1980. Estimation of density from line transect sampling of biological populations. *Wild life Monography* **72**: 1-202.

Byanju, R., Shrestha, S.P. and Khanal, D.R. (2011). Prevalence of Gastrointestinal Parasites in Yaks of Lehe VDC, Manaslu Conservation Area. *Nepal Journal of Science and Technology* **12**: 366-369.

Carneri, I. 1972. Isolation of *Balantidium coli* in culture and study of the speed of action of metronidazole and nitrimidazine. *Rev. Inst. Med.Trop. Sao Paulo* **14**: 321–325.

CBS, 2001. Central Bureau of Statistics, Government of Nepal, Kathmandu.

Central Department of Statistics (CDS) 2002. Ministry of Population and Environment. HHMG Nepal.

Chaudhary, R.B. 2014. Gastrointestinal parasites in Krisnasar (*Antilope cervicapra*) of Blackbuck conservation area, Bardiya and Suklaphanta Wildlife Reserve, Kanchanpur. M.sc. Thesis. Central Department of Zoology, Tribhuvan University, Kirtipur, Kathmandu, Nepal.

Chavez, D.J., LeVan, I.K., Miller, M.W. and Ballweber, L.R. 2012. *Baylisascaris procyonis* in raccoons (*Procyon lotor*) from eastern Colorado, an area of undefined prevalence. *Veterinary Parasitology* **185**: 330–334.

Choudhury, A. 2001. An overview of the status and conservation of the Red Panda (*Ailurus fulgens*) in India, with reference to its global status. *Oryx* **35**: 250-259.

Chowdhary, Z.H., Mian, M.F. and Debnath, N.C. (1992). Prevalence of Helminth parasitic infections in Zebu Cattle (*Bos indicus*) at Savar Bangladesh. *Ajas* **6**(3): 427-431.

Chowdhury, S.M., Mian Z.H. and Debnath, N.C. (1993). Prevalence of helminthic infection in Zebu cattle (*Bos indicus*) at Savar, Bangladesh. *Animal Health Research Division* **6** (3): 427-431.

de Castro, F. and Bolker, B. (2005) Mechanisms of disease-induced extinction. *Ecology Letters* **8**: 117–126.

Deplazes, P., Heggin, D., Gloor, S. and Romig, T., 2004. Wilderness in the city :the urbanization of *Echinococcus multilocularis*. *Trends Parasitology* **20**: 77–84.

Dhakal, K.P. 2008. A preliminary coprological study on helminth parasites in cattle (*Bos sp.*) of Anarmani VDC-02 Jhapa. M.sc. Thesis. Central Department of Zoology, Tribhuvan University, Kirtipur, Kathmandu, Nepal.

Diaz, P., Paineira, A., Dacal, V., Vazquez, L., Cienfuegos, S., Ariasm, S., Pato, F. J. et al. 2010. *Eimeria* infections in wild (*Capreolus capreolus*) and extensive-reared domestic ruminants from Galicia (NW Spain). Rev. Ibero-Latinoam. Parasitology **69** (1): 83-89.

DNPWC, 2010. Red Panda (*Ailurus fulgens*) Conservation Action Plan For Langtang National Park, Nepal. Government of Nepal, Ministry of Forests and Soil Conservation, Department of National Parks and Wildlife Conservation, Langtang National Park.

Dorji, S., Rajaratnam, R. and Vernes, K. 2012. The Vulnerable red panda *Ailurusfulgens* in Bhutan: distribution, conservation status and management recommendations. Oryx **46**: 536-543.

Dubey, J.P., Garner, M.M., Rosenthal, B.M.. and DeGhetto, D. 2000. Clinical Coccidiosis in Raccoons (*Procyon lotor*). Journal of Parasitology **86**(6): 1299-1303.

Dubey, J.P. 1982. *Baylisascaris procyonis* and eimerian infections in Raccoons. Journal of the American Veterinary Medical Association, **181**(11): 1292– 1294.

Farooq, Z., Mushtaq, S., Iqbal, Z., and Akhtar, S. 2012. Parasitic Helminths of Domesticated and Wild Ruminants in Cholistan Desert of Pakistan. International Journal of Agriculture and Biology **14**(1): 63–68.

Fikru, R., Teshale, S., Reta, D. and Yosef, K. 2006. Epidemiology of Gastro Intestinal Parasites of Ruminants in western Oromia Ethiopia, International Journal of Applied Research in Veterinary Medicine **4**: 51-57.

Foster, G.W., McCleery, R.A. and Forrester, D.J. 2004. Intestinal Coccidia of Raccoons (*Procyon lotor*) from Key Largo, Florida, U.S.A. Comparative Parasitology **71**(2): 175-177.

- Funk, S.M., Fiorella, C.V., Cleaveland, S. and Gompper, M.E. 2001. The role of disease in carnivore ecology and conservation. *Carnivore Conservation* (eds J. Gittleman, S. Funk, D. MacDonald and R. Wayne), pp. 241–281.
- Gillespie, T.R., Greiner, E.C. and Chapman, C.A. 2005. Gastrointestinal parasites of the colobus monkeys of Uganda. *Journal of Parasitology* **91**: 569–573.
- Gondim, L.F.P., McAllister, M.M., Mateus, P.N.E., Pitt, W.C., Mech, L.D. and Nelson, M.E. 2004. Transmission of *Neospora caninum* between wild and domestic animals. *Journal of Parasitology*: **90**(6): 1361–1365.
- Gortázar, C., Ferroglio, E., Höfle, U. And Frölich, K. 2007. Diseases shared between wildlife and livestock: A European perspective. *European Journal of Wild Research* **53**:241–256.
- Goswami, A., Laha, R., Sarma, D. and Chatlod, L.R. (2013). A Report on Gastrointestinal Parasitic Infections in Yaks. *Indian Journal of Hill Farming* **26**(1): 42-44.
- Grondahl, C., Monrad, J., Dietz, H.H., Jensen, H.E., Johansen, M. V. and Kapel, C. 2005. Angiostrongylosis in red panda (*Ailurus fulgens fulgens*). *Proceedings of International Symposium od Disease in Zoo and Wild animals* **42**: 117–118.
- Gross, S.J., Ryan, W.G. and Ploeger, H.W. (1999), Anthelmintic treatment of adult dairy cows and the effect on milk production. *Veterinary Journal* **144**: 125-137.
- Hale, O.M. and Stewart, T.B. 1979. Influence of an experimental infection of *Trichuris suis* on performance of pigs. *Journal of animal science* **49**: 1000–1005.
- Hansen, J. and Perry, T. 1994. The epidemiology, Diagnosis and Control of Helminth Parasites of Ruminants, 2nd ed., International Laboratory for Research on Animal Diseases (ILRAD).Nairobi, Kenya. pp. 80-92.
- He, G., Wang, T., Yang, G., Fei, Y., Zhang, Z., Wang, C. et al. 2009. Sequence analysis of Bs-Ag2 gene from *Baylisascaris schroederi* of Giant Panda and evaluation of the efficacy of a recombinant Bs-Ag2 antigen in mice. *Vaccine* **27**: 3007–3011.

Hernandez, S.M., Galbreath, B., Riddle, D.F., Moore, A.P., Palamar, M.B. and Levy, M.G. 2012. *Baylisascaris procyonis* in raccoons (*Procyon lotor*) from North Carolina and current status of the parasite in the USA. *Parasitology Research* **112**(2): 693-698.

Hoberg E.P. and Brooks D.R. 2008. A macroevolutionary mosaic: episodic host-switching, geographical colonization and diversification in complex host-parasite systems. *Journal of Biogeography* **35**: 1533–1550.

Horak, I.G., Evans U. and Purnell, R.E. 2004. Parasites of domestic and wild animals in South Africa. XLV. Helminths of dairy calves on dry-land Kikuyu grass pastures in the Eastern Cape Province. *Onderstepoort Journal of Veterinary Research* **71**: 291–306.

Hossain, M.M., Paul S., Rahman, M.M., Hossain, F.M.A. and Islam, M.R. 2011. Prevalence and economic significance of caprine fascioliasis at Sylhet district of Bangladesh. *Pakistan Veterinary Journal* **31**: 113–116.

Hossain, N.M. 2012. Investigation on gastrointestinal parasites in captive wild animals and birds in Bangladesh Sheikh Mujjib Safari Park, Dulahazara, Cox's Bazar. M.sc. Thesis. Department of parasitology, Bangladesh Agricultural University, Mymensingh.

Hotez, P.J., Brooker, S., Bethony, J.M., Bottazzi, M.E., Loukas, A. and Xiao, S. 2004. Hookworm infection. *National English Journal of Medicine* **351**: 799–807.

Hu, J.C. 2001. Research on the Giant Panda. Shanghai Science Technology and Education Press, pp: 290-402.

Huff, D.S., Neafie, R.C., Binder, M.J., Leon, G.A.D., Brown, L.W. and Kazacos, K.R. 1984. The first fatal *Baylisascaris* infection in humans: an infant with eosinophilic meningoencephalitis. *Pediatric Pathology* **2**(3): 345-352.

Hui, D., Li, C., Zhao, Q., Li, J., Han, H., Jiang, L., et al. (2012). Prevalence of *Eimeria* Infection in Yaks on the Qinghai-Tibet Plateau of China. *Journal of Parasitology* **98**(5):958-962.

Hudson, P.J., Rizzoli, A.P., Grenfell, B.T., Heesterbeek, H. and Dobson, A.P. 2002. The Ecology of Wildlife Diseases. Oxford University Press, Oxford, p. 197.

Ikpeze, O.O. and Nzemeka, F.I. (2009). Gastrointestinal tract (GIT) helminth parasites of Goat in Ibusa, Delta State, Southern Nigeria. African Journal of Medical Sciences **2**(1): 20-23.

Iqbal, M., Farooq, U., Basir, A., Khan, N.A. and Malik, S.Z. 2000. In: A Baseline Survey for the Development of Livestock Sector in Cholistan. Gmdll, GTZ P.N. 91.2123.7. Lahore: Pak-German Technical Cooperation, Livestock and Dairy Development Department ISSN 1311-1477; DOI: 10.15547/bjvm.872

Ismail, H.A., Jeon, [H.K.](#), Yu, [Y.M.](#), Do, [C.](#) and Lee, [Y.H.](#) 2010. Intestinal Parasite Infections in Pigs and Beef Cattle in Rural Areas of Chungcheongnam-do, Korea. Korean Journal of Parasitology **48**(4): 347–349.

Iwaki, T., Okada, T., Seki, K., Izawa, K. and Sakurai, F. 2012. *Ogmocotyle ailuri* (Price, 1954) (Digenea: Notocotylidae) Found in the Japanese Monkey, *Macaca fuscata*. Journal of Veterinary Medical Science **74**(9): 1211-1212.

Janet, C.P.K., Lynda, M.G., Jefferies, R., Morgan, E.R., Nanny, W. and Sharon P.R. 2009. Pneumonia from *Angiostrongylus vasorum* infection in a red panda (*Ailurus fulgens fulgens*). Journal of Veterinary Diagnosis Investigation **21**:270–273.

Jensen, H.E., Dietz, H.H., Grondahl, C., Kapel, C. and Monrad, J. 2005. The pathology associated with *Angiostrongylus vasorum* infection in the Red Panda (*Ailurus fulgens fulgens*). Proceedings of the 23rd Meeting of the European Society of Veterinary Pathology, The European Society of Veterinary Pathology pp: 70–71.

Jeon, [H.K.](#), [Hassan, A.H.](#), [smail, A.I.](#), [Yong, M.Y.](#), [Changhee, D.](#) and [Young, H.L.](#) 2010. Intestinal Parasite Infections in Pigs and Beef Cattle in Rural Areas of Chungcheongnam-do, Korea. Korean Journal of Parasitology **48**(4): 347–349.

Jnawali, S.R., Baral, H.S., Lee, S., Acharya, K.P., Upadhyay, G.P., Pandey, M., Shrestha, R., Joshi, D., et al. 2011. The Status of Nepal Mammals: The National Red List Series, Department of National Parks and Wildlife Conservation, Kathmandu, Nepal.

Kandel, K. 2009. Distribution and habitat use of Red Panda (*Ailurus fulgens* F. Cuvier 1825) in eastern Nepal. M.sc. Thesis Central Department of Zoology, Tribhuvan University, Kritipur, Kathmandu, Nepal.

Kanyari, P.W.N., Mhoma, J.R.L. and Kagira J.M. 2011. The prevalence of gastro-intestinal parasites in goats in urban and peri-urban areas of Mwanza City, Tanzania. *Science of Parasitology* **12**(4):191-196.

Kanyari, P.W.N., Kagira, J.M. and Mhoma, R.J. 2009. Prevalence and intensity of endoparasites in small ruminants kept by farmers in Kisumu Municipality, Kenya. *Livestock Researcher for Rural Development* **21** (11).

Karamon, J., Kochanowshi, M., Cencek, T., Bartoszewicz, M. and Kusyk, P. 2013. Gastrointestinal helminths of raccoons (*Procyon lotor*) in western Poland (Lubuskie province) - with particular regard to *Baylisascaris procyonis*. *Bulletin of the Veterinary Institute in Pulawy* **58**(4): 547–552.

Kazacos, K.R. 2001. *Baylisascaris procyonis* and related species. In: Parasitic diseases of wild mammals. Samuels, W.M.; Pybus, M.J. and Kocans, A.A. (eds.). Iowa State University Press/Ames, Iowa. pp.: 301-341.

Kelley, S.W. 2010. Heterobilharziasis (Trematoda: Schistosomatidae) in Raccoons (*Procyon lotor*) of north central Texas. *The Texas Journal of Science* **62**(1). 75-84

Kelley, S.W. and Horner, N.V. 2008. The prevalence of cestodes in raccoons (*Procyon lotor*) from north central Texas. *Comparative Parasitology* **75**: 292-298.

Khajuria, J.K., Katoch, R., Yadav A., Godara, R., Gupta, S.K. and Singh, A. (2013). Seasonal prevalence of gastrointestinal helminths in sheep and goats of middle agro-climatic zone of Jammu province. *Journal of Parasite and Disease* **37**(1): 21–25.

Kidder, J.D., Wade, S.E., Richmond, M.E. and Schwager, S.J. 1989. Prevalence of patent *Baylisascaris procyonis* infection in raccoons (*Procyon lotor*) in Ithaca, New York. *Journal of Parasitology* **75**: 870-874.

- Krecek, R.C. and Waller, P.J. 2006. Towards the implementation of the “basket of options” approach to helminth parasite control of livestock: Emphasis on the tropics/subtropics. *Veterinary Parasitology* **139**: 270-282.
- Kresta, A.E., Scott E.H. and Danny, B.P. (2009). Gastrointestinal helminthes in Raccoons. *Journal of Wildlife Diseases* **45**(1): 1-13.
- Kuchai, J.A., Chishti, M.Z., Ahmad, F. and Rasool, M. 2010. Prevalence of Trematode Parasitic Infestation in Yak of Ladakh (*Bos grunniens*). *Pakistan Journal of wildlife* **1**(2): 64-66.
- Laha, R., Das, M. and Goswami, A. 2012. Gastrointestinal parasitic infections in organized cattle farms of Meghalaya. *Veterinary world* **2013**: 109-112
- Lama, S.T., Lama, R.P., Regmi, G.R. and Ghimire, T.R. (2015). Prevalence of intestinal parasitic infections in free-ranging Red Panda *Ailurus fulgens* Cuvier, 1825 (Mammalia: Carnivora: Ailuridae) in Nepal. *Journal of Threatened Taxa*, **7**(8): 7460–7464.
- Lan, J., Fu, Y., Zhi, Y., Zhang, Z., Wang, C. and Luo, L. 2012. Treatment and prevention of natural heartworm (*Dirofilaria immitis*) infections in Red Pandas (*Ailurus fulgens*) with selamectin and ivermectin. *Parasitology International* **61**(2): 372-374.
- Lem, M.F., Vincent, K.P., Pone, J.W. and Joseph, T. (2012). Prevalence and intensity of gastro-intestinal helminths in horses in the Sudano-Guinean climatic zone of Cameroon. *Tropical Parasitology* **2**(4): 5-8.
- Li, M., Wei, F., Goossens, B., Feng, Z., Tamate, H.B., Bruford, M.W. et al. 2005. Mitochondrial phylogeography and subspecific variation in the red panda (*Ailurus fulgens*): implications for conservation. *Molecular phylogenetics and evolution*, **36**: 78-89.
- Logiudice, K. 2003. Trophically transmitted parasites and the conservation of small populations: Raccoon roundworm and the imperiled Allegheny woodrat. *Conservation Biology* **17**:258–266.
- Lohoni, M.N. and Rasaili, D.R. 1995. Bulletin of Veterinary science and animal health in Nepal. **21**: 8-13.

- Long, D.B., Campbell, T.A. and Henke, S.E. 2006. *Baylisascaris procyonis* (Nematoda: Ascaridoidea) in raccoon (*Procyon lotor*) from Duval County. Texas Journal of Sciences **58**(3): 281-285.
- Maharjan, R.M. 2009. Prevalence of Echinococcosis/hydatidosis in different livestock slaughtered in Kritipur Municipality and impact on public health. M.sc. Thesis. Central Department of Zoology, Tribhuvan University, Kritipur, Kathmandu, Nepal.
- Martinez, M.A.J, Cano, E.V. and Rois, J.L. 2015. *Baylisascaris procyonis* larva migrans in two white-headed lemurs (*Eulemur albifrons*) in Spain and response to treatment derived from a human pediatric protocol. Veterinary Parasitology **210**: 246–249.
- Matsubayashi, M., Kita, T., Narushima, T., Kimata, I., Tani, H., Sasai, K., et al. 2009. Coprological survey of parasitic infections in pigs and cattle in slaughterhouse in Osaka, Japan. Journal of Veterinary Medical Science **71**: 1079–1083.
- Mersha, C., 2012. Occurrence of Gastro Intestinal Nematodes of Cattle in and Around Gondar Town, Amhara Regional State, Ethiopia. Acta Parasitologica Globalis **3** (2): 28-33.
- Michel, J.Y. and Gayle, P.N. 1999. Nematodes and Acanthocephalans of Raccoons (*Procyon lotor*), with a New Geographical Record for *Centrorhynchus conspectus* (Acanthocephala) in South Carolina, U.S.A. Journal of Helminthological Society of Washington **66**(2): 111-114.
- Miyashita, M. 1993. Prevalence of *Baylisascaris procyonis* in raccoons in Japan and experimental infections of the worm to laboratory animals. Journal of Urban Living Health and Association **37**: 137-151.
- Montali, R.J., Roberts, M., Freeman, R.A. and Bush, M. 1984. Pathology survey of the Red Panda. In: One Medicine, A Tribute to Kurt Benirschke, Ryder, O.A., Byrds, M.L. (eds), 1st ed. Springer Verlag, Berlin, Heidelberg, New York, Tokyo, p. 128-140.
- Morgan, E.R., Shaw, S.E., Brennan, S.F., De Waal, T.D., Jones, B.R., Mulc-ahy, G., 2005. *Angiostrongylus vasorum*: a real heartbreakers. Trends Parasitology **21**: 49–51.
- Myers, N., Mitternier, R.A., Fonesca, G.A.B. and Kent, J. 2000. Biodiversity hotspots for conservation priorities. Nature **40**: 853-858.

Nakauchi, K. 1999. The Prevalence of *Balantidium coli* Infection in Fifty-Six Mammalian Species. *Journal of Veterinary Medical Science* **61**(1): 63–65.

Neiffer, D.L., Klein E.C., Calle, P.F., Linn, M., Terrell, S.P. and Walker, R.L. 2002. Mortality associated with melarsomine dihydrochloride administration in two North American river otters (*Lontra canadensis*) and a red panda (*Ailurus fulgens fulgens*). *Journal of Zoo and Wildlife Medicine* **33**(3): 242-248.

Neupane, O.P. 2012. Epidemiology of gastrointestinal helminth in goats of Banke, Nepal. M.sc. Thesis Central Department of Zoology, Tribhuwan University, Kritipur, Kathmandu, Nepal.

Ntonifor, H.N., Shei, S.J., Ndaleh, N.W. and Mbunkur, G.N. 2013. Epidemiological studies of gastrointestinal parasitic infections in ruminants in Jakiri, Bui Division, North West Region of Cameroon. *Journal of Veterinary Medicine and Animal Health* **5**(12): 344- 352.

Otranto D., Cantacessi C., Torres, F.D., Brianti, E., Pfeffer, M., Genchi, C., Guberti, V. et al. 2015. The role of wild canids and felids in spreading parasites to dogs and cats in Europe. Part II: Helminths and arthropods. *Veterinary Parasitology*, In press

Olson, D. and Dinerstein, E. 1998. A representation approach to conserving the Earth's most biologically valuable ecoregion. *Conservation biology* **12**(3): 502- 515.

Pam V.A., Ogbu, K.I., Igeh C.P., Bot, C.J. and Vincentm, G. (2013). Prevalence of Endoparasites of Horses in Jos North and Jos South Local Government Areas of Plateau State Nigeria . *Journal of Animal Science advance* **3**(2): 103-108.

Park, S.Y., Glaser, C., Murray, W.J., Kazocos, K.R., Rowley, H.A. and Fredrick, D.R. 2000. Raccoon roundworm (*Baylisascaris procyonis*) encephalitis: Case report and field investigation. *Pediatrics* **106**(4): E56.

Pathak, C. 2011. A study on intestinal helminth parasites of goat (*Capra hircus*) brought to Khasibazar, Bagbajar (Kathmandu) for slaughter purpose. M.sc. Thesis. Central Department of Zoology, Tribhuwan University, Kritipur, Kathmandu, Nepal.

Patterson-kane, J.C., Gibbons, L.M., Jefferies, R., Morgan, E.R., Wenzlow, N. and Redrobe, S.P. 2009. Pneumonia from *Angiostrongylus vasorum* infection in a red panda (*Ailurusfulgensfulgens*). *Journal of Veterinary Diagnostic Investigation* **21**: 270-273.

Paul, W.N.K., John, M.K., and Jumanne, M.R.L. 2010. Prevalence of endoparasites in cattle within urban and peri-urban areas of Lake Victoria Basin, Kenya with special reference to zoonotic potential. *Science of Parasitology* **11**(4):171-178.

Pedersen, A.B., Altizer, S., Poss, M., Andrew, A.C. and Nunn, C.L. 2005 Patterns of host specificity and transmission among parasites of wild primates. *International Journal for Parasitology* **35**: 647–657.

Pence, D.B., Michael, T.E., and Laack, L.L. 2003. Helminths of the Ocelot from Southern Texas. *Journal of Wildlife Diseases* **39**(3): 683–689.

Perry, B.D., Randolph, T.F., McDermott, J.J. and Thornton, K.R. 2002. Investing in animal health research to alleviate poverty. ILRI, Nairobi, Kenya, 148pp.

Pfukenyi, D.M., Mukaratirwa, A.S., Willingham, A.L. and Monrad, J. 2007. Epidemiological studies of parasitic gastrointestinal nematodes, cestodes and coccidia infections in cattle in the highveld and lowveld communal grazing areas of Zimbabwe. *Onderstepoort Journal of Veterinary Research* **74**: 129-142.

PHVA 2010. Report from wild population group. Population Health and Viability Assessment of Red Panda in Nepal, (Unpublished).

Pradhan, S., Saha, G.K., Khan, J.A. 2001. Ecology of the red panda *Ailurusfulgens* in the Singhalila National Park, Darjeeling, India. *Biological conservation* **98**, 11-18.

Pradhan, S., Sharma, D., Subba, B. and Chettri, V. 2011. Preliminary investigation on the parasites of mammals at Padmaja Naidu Himalayan Zoological Park, Darjeeling. *Zoo's Print* **26** (8): 11-13.

Price, E.W. 1960. A note on *Ogmocotyle ailuri* (Price, 1954) (Trematoda: Notocotylidae). *Journal of Helminthological Society of Washington* **27**: 119–121.

Price, E.W. 1954. A new trematode from the lesser panda, *Ailurus fulgens*. *Journal of Parasitology* **40**: 38-39.

Rafiullah, A.A.T., Abdul, S., Shah, S.R., Shabbir, A. and Muhammad, S. 2011. Prevalence of gastrointestinal tract parasites in cattle of Khyber Pakhtunkhwa *ARPJ Journal of Agricultural and Biological Science* **6**: 9.

Rajakaruna, R.S. and Warnakulasooriya, K.N. 2011. Gastrointestinal parasites in Dairy cattle in Kandy district in Srilanka. *Annual Research Journal of Slsaj* **11**: 92 – 99.

Rao, A.T and Acharjyo L.N. (1984). Diagnosis and classification of common diseases of captive animal at Nandan Kanan Zoo in Orissa (India). *Indian Journal of Animal Health* pp:147-152.

Roberts, M.S., and Gittleman, J.I. 1984. *Ailurusfulgens*. *Mammalian species*. **222**: 1-8.

Sathaporn, J., Arkom, S., Burin N., Tawin, I., Chamnonjit, P. and Nongnuch, P. 2011. Prevalence of Gastro-Intestinal Parasites of Dairy Cows in Thailand. *Kasetsart Journal of Natural Science* **45**: 40 – 45.

Sato, H., Furuoka, H. and Kamiya, H. 2001. First outbreak of *Baylisascaris procyonis* larva migrans in rabbits in Japan. *Parasitology International* **51**: 105-108.

Sato, H., Matsuo, K., Osanai, A., Kamiya, H., Akao, N. and Owaki, S. 2004. Larva migrans by *Baylisascaris transfuga*: fatal neurological diseases in Mongolian jirds, but not in mice. *Journal of Parasitology* **90**: 774-781.

Schuster, F.L. and Ramirez, A.L., 2008. Current world status of *Balantidium coli*. *Clinical Microbiology* **21**: 626–638.

Sexsmith, J.L., Whiting, T.L., Gree, C., Orvis, S., Berezanski, D.J. and Thompson, A.B. 2009. Prevalence and distribution of *Baylisascaris procyonis* in urban raccoons (*Procyon lotor*) in Winnipeg, Manitoba. *The Canadian Veterinary Journal* **50**(8): 846-850.

Shakya, M. 2009. Prevalence of *Taenia solium* in pig and its public health importance in Kritipur Municipality, Nepal. M.sc. Thesis Central Department of Zoology, Tribhuvan University, Kritipur, Kathmandu, Nepal.

Sharma, H. P., Belant, J. L., and Swenson, J. E. 2014. Effects of livestock on occurrence of the Vulnerable red panda *Ailurus fulgens* in Rara National Park, Nepal. *Oryx* **48**: 228-231.

Sharma, H.P. and Belant, J.L. 2009. Distribution and observations of Red Pandas (*Ailurus fulgens fulgens*) in Dhorpatan Hunting Reserve, Nepal. *Small Carnivore Conservation* **40**: 33-35.

Sharma, H.P. and Belant, J.L. 2010. Threats and Conservation of Red Pandas in Dhorpatan Hunting Reserve, Nepal. *Human Dimensions of Wildlife* **15**(4): 299-300.

Shirale, S.Y., Meshram, M.D. and Khillare, K.P. (2009). Prevalence of gastrointestinal parasites in cattle of Western Vidarbha Region. *Veterinary World* **1**:45.

Shrestha, C.K. 2015. Gastrointestinal parasites in Red Panda (*Aelurus fulgens*) of Rara National Park, Mugu, Rasuwa, Nepal. M.sc. Thesis Central Department of Zoology, Tribhuvan University, Kritipur, Kathmandu, Nepal.

Shrestha, S. and Bindari, Y.R. (2013). Prevalence of gastrointestinal parasites in Chauries of Gumdel VDC of Ramechhap District, Nepal. *Net Journal of Agricultural Science* **1**(3): pp. 73-74.

Siddiki, A.Z., Uddin, M.B., Hasan, M.B., Hossain, M.F., Rahman, M.M., Das, B.C., Sarker, M.S. et al. 2010. Coproscopic and haematological approaches to determine the prevalence of helminthiasis and protozoan diseases of Red Chittagong Cattle (RCC) breed in Bangladesh. *Pakistan Veterinary Journal* **30**: 1–6.

Sikarskie, J.G., Lowrie, C.T., Kennedy, F.A. and Brady, G.L. 1991. Canine distemper in a vaccinated Red Panda (*Ailurus fulgens fulgens*). Proceeding of American Association of Zoo Veterinarians Conference: 292-293pp.

Smith, H., Holland, C., Taylor, M., Magnaval, J.F., Schantz, P. and Maizels, R. 2009 How common is human toxocariasis? Towards standardizing our knowledge. Trends Parasitology **25**: 182–188.

Soulsby, E.J.L. 1982. Textbook of veterinar clinical parasitology Vol I, Helminth Oxford Blackwell Scientific, London.

Souza, M.J., Ramsay, E.C., Patton, S. and New, J.C. 2009. *Baylisascaris procyonis* in raccoons (*Procyon lotor*) in eastern Tennessee. Journal of Wildlife Diseases **45**(4): 1231–1234.

Swai, E.S., Mtui, P.F., Mbise, A.N., Kaaya, E., Sanka, P. and Loomu, P.M. 2006. Prevalence of gastro intestinal parasite infections in Maasai cattle in Ngorongoro District, Tanzania. Livestock research for rural development **18** (8).

Taylor, M.A., Coop, R.L., Wall, R.L, 2007. Veterinary Parasitology, third ed. Blackwell Publishing, Oxford, UK.

Tefera, M., Batu, G. and Bitew, M. 2009. Prevalence of Gastrointestinal Parasites of Sheep and Goats in and around Bedelle, South-Western Ethiopia. The Internet Journal of Veterinary Medicine **8**: 2.

Tesfu, N., Asrade, B., Abebe, R. and Kasaye, S. 2014. Prevalence and Risk Factors of Gastrointestinal Nematode Parasites of Horse and Donkeys in Hawassa Town, Ethiopia Journal of Veterinar Science and Technology **5**:5.

Thapa, C. 2013. Prevalence of gastrointestinal parasites of Himalayan Tahr (*Hemitragus jemlahicus*) and Barking Deer (*Muntiacus veginalis*) of Rara National Park, M.sc. Thesis. Central Department of Zoology, Tribhuwan University, Kritipur, Kathmandu, Nepal.

Thomas, C. 2002. Extinction, colonization, and metapopulations: environmental tracking by rare species. Conservation biology **8**: 373-378.

- Tomass, Z., Imam, E., Kifleyohannes, T., Tekle, Y. and Weldu, K. 2013. Prevalence of gastrointestinal parasites and *Cryptosporidium* species in extensively managed pigs in Mekelle and urban areas of southern zone of Tigray region, Northern Ethiopia *vetworld*.pp 433-439.
- Traversa, D., Di Cesare, A. and Conboy, G., 2010. Canine and feline cardiopulmonary parasitic nematodes in Europe: emerging and underestimated. *Parasites and Vectors* **3**: 62.
- Uslu, U. and Guclu, F. (2007). Prevalence of endoparasites in Horse and donkeys in turkey. *Bulletine Veterinary Institute of Pulawy* **51**: 237-240.
- Uysal, H.K., Boral, O., Metiner, K. and Ilgaz, A. (2009) Investigation of intestinal parasites in pig feces that are also human pathogens. *Turkiye Parazitology Derg* **33**: 218–221.
- Van Wyk I.C. and Boomker, J. (2011) Parasites of South African wildlife. XIV. The prevalence of helminths in some common antelopes, warthogs and a bushpig in the Limpopo province, South Africa. *Onderstepoort Journal of Veterinary Research* **78**: 1–11.
- Varadharajan, A. and Kandassamy, A. 2000. A survey of gastrointestinal parasites of wild animals in captivity in the V.O.C. Park and Mini Zoo, Coimbatore, India. *Zoos' print journal* **15**(5): 257-258.
- Varadharajan, A and Pythal, C. 1999. A preliminary investigation on the parasites of wild animals at the zoological garden, Thiruvananthapuram, Kerala. *Zoos' print journal* **3-12**: 159-164.
- Villeneuve, A. 2013. Laboratoire de parasitologie Faculte de medecine veterinaire Saint-Hyacinthe Les parasites du chien ([www. Wikipedia.org](http://www.Wikipedia.org)).
- Waller, P.J. (2002). Reindeer (*Rangifer tarandus*) and yak (*Bos (Poephagus) grunniens*): Disparate animal species – similar environment, management and parasite problems? In: Proceedings of the 3rd. International congress on yaks held in Lhasa (September 4-9 2000) Nairobi, Kenya, pp 429-438
- Walzer, P.D., Healy, G.R., 1982. Balantidiasis. In: Steele, J.H. (Ed.), Handbook Series in Zoonoses. CRC, Press, Inc., Boca Raton, FL, pp. 15–24.

Wang, X., Choudhury, A., Yonzon, P.B., Wozencraft, C. and Than, Z.(2008). *Ailurusfulgens*. In: IUCN 2012. IUCN Red List of Threatened Species.

Wei, F., Feng, Z., Wang, Z., and Hu, J. 1999. Current distribution, status and conservation of wild red pandas *Ailurusfulgens* in China. *Biological Conservation* **89**: 285-291.

Weng, Y.B., Hu, Y.J., Li, Y., Li, B.S., Lin, R.Q., Xie, D.H. et al. 2005. Survey of intestinal parasites in pigs from intensive farms in Guangdong Province, People's Republic of China. *Veterinary Parasitology* **127**: 333–336.

Willesen, J.L., Smith, F.M., Wiinberg, B., Monrad, J. and Bertelsen, M.F. 2012. Clinical implications of infection with a novel metastrongyloid species in the Red Panda (*Ailurus fulgens*). *Journal of Zoo and Wildlife Medicine* **43**(2): 283–288.

Williams, B. H. 2003. Red panda in eastern Nepal: how do they fit into ecoregional conservation of the eastern Himalaya. *Conservation Biology in Asia* **16**: 236-250.

Woodford, M.H., 1976. A survey of parasitic infestation of wild herbivores and their predators in the Ruwenzori National Park, Uganda. R.C.V.S. Thesis pp: 81.

Wright, A.N. and Gompper, M.E. 2005. Altered parasite assemblages in raccoons in response to manipulated resource availability. *Oecologia* **144**: 148-156.

WWF and ICIMOD 2001. Biological conservation in the Eastern Himalaya: Focal species andecological processes. In ecological based conservation in the eastion- Himalaya. Identifying important areas for Biodiversity conservation. WWF Nepal Program, Kathandu.

Xie, Y., Chen, S., Yan, Y., Zhang, Z., Li, D. and Yu, H. 2013. Potential of recombinant inorganic pyrophosphatase antigen as a new vaccine candidate against *Baylisascaris schroederi* in mice. *Veterinary Research* **44**(1): 90.

Xie, Y., Zhang, Z., Niu, L., Wang, Q., Wang, C., Lan, J. 2011. The Mitochondrial Genome of *Baylisascaris procyonis*. *PloS One* **6**(10): e27066.

- Xie, Y., Zhang, Z., Wang, C., Lan, J., Li, Y., Chen, Z. et al. 2011. Complete mitochondrial genomes of *Baylisascaris schroederi*, *Baylisascaris ailuri* and *Baylisascaris transfuga* from Giant Panda, Red Panda and Polar Bear. *Gene* **482**(1-2): 59–67.
- Yadav, A.K. and Tandon, V., 1989. Gastrointestinal nematode infection of goat in a subtropical and humid zone of India. *Veterinary Parasitology* **33**(2): 135-142.
- Yang, G.Y. 1998. Advance on parasites and parasitosis of Giant Panda. *Chinese Journal of Veterinary Science* **18**: 158–208.
- Yeitz, J.L., Gillin, C.M., Bildfell, R.J. and Debess, E.E. 2009. Prevalence of *Baylisascaris procyonis* in raccoons (*Procyon lotor*) in Portland, Oregon, USA. *Journal of Wildlife Diseases* **45**(1): 14-18.
- Yozon, P., Jone, D.R. and Fox, R. 1991. Geographic information system for assessing habitat and estimating population of Red Panda in Lantang National Park, Nepal. *Ambio* **20**(7): 285-288.
- Yonzon, P.B. 1989. Ecology and conservation of the red panda in the Nepal-Himalayas. Unpublished Ph.D. Dissertation. University of Maine. Orono, U.S.A.
- Yonzon, P.B. and Hunter, M.L. 1991. Conservation of the red panda *Ailurus fulgens*. *Biological conservation* **57**: 1-11.
- Yonzon, P.B. 2000. Opportunistic in ecoregion based conservation in Kanchanjunga region Eastern Nepal. In WWF, Kanchanjunga mountain Complex. Biodiversity Assessment and conservation Planning. WWF Nepal Program, Kathmandu, pp:1-29.
- Yonzon, P.B. and Hunter, M.L. 1991. Cheese, Tourists and Red Pandas in the Nepal Himalayas. *Conservation Biology* **5**(2): 196-202.
- Yoshimura, K., Hishinuma, Y. and Sato, M. 1969. *Ogmocotyle ailuri* (Price, 1954) in the Taiwanese monkey, *Macaca cyclopis* (Swinhoe, 1862). *Journal of Parasitology* **55**: 460-461.

Zhang, J.S., Daszak, P., Huang, H.L., Guang, Y.Y., Kilpatrick, A. M. and Zhang, S. 2007. Parasite Threat to Panda Conservation. Eco Health Journal Consortium DOI: 10.1007/s10393-007-0139-8

Zhang, J.S., Daszak, P., Huang, H.L., Yang, G.Y., Kilpatrick, A.M. and Zhang, S. 2008. Parasite threat to panda conservation. Ecohealth **5**: 6–9.

Zhang, L., Yang, X., Wu, H., Gu, X., Hu, Y. and Wei, F. 2011. The parasites of Giant Pandas: individual-based measurement in wild animals. Journal of Wildlife Diseases **47**(1): 164-171.

Zhang, W., Yie, S., Yue, B., Zhou, J., An, R., Yang, J. et al. 2012. Determination of *Baylisascaris schroederi* infection in wild Giant Pandas by an accurate and sensitive PCR/CE-SSCP method. PLoS One **7**(7): e41995.

Zhang, Z.H. and Wei, F.W. 2006. Giant Panda exsitu conservation theory and practice. Science Press, Beijing, China, 546 p.

Zhou, X., Xie, Y., Zhang, Z., Wang, C., Sun, Y. and Gu, X. 2013. Analysis of the genetic diversity of the nematode parasite *Baylisascaris schroederi* from wild Giant Pandas in different mountain ranges in China. Parasites and Vectors **6**(1): 233.

Zoll, W.M., Needle, D.B., French, S. J., Lim, A., Bolin, S., Langohr, I. and Agnew, D. 2015. *Sarcocystis spp.* Infection in two Red Panda Cubs (*Ailurus fulgens*). Journal of Compound Pathology **1**: 1-5.