

# CHAPTER - I

## INTRODUCTION

### 1.1 BACKGROUND OF THE STUDY

The economy of a country indicates the development of the country. The financial sector plays an important role in the development of the country and mobilization of financial resources. The financial sector consists of banks, co-operative societies, insurance companies, stock markets, foreign exchange markets, mutual funds, provident fund etc. Financial sector organizes the scattered domestic financial resources and invest them in different sectors. Economic development depends upon various factors however, the major are capital formation and proper utilization of the capital.

Banks play an important role in the economic growth of a country. Banking, when properly organized, aids and facilitates the growth of trade and industry. In the modern economy, banks are to be considered not as dealers in money but as the leaders of development. "Banks are not just the storehouse of the country's wealth but are the reserves of the resources necessary for economic development. Bank renders valuable services to trade and industry. The economic growth of the country depends on the growth and development of trade and industry. Industrial development can take place only if sufficient money is invested in industries. Banks undertake the stupendous task by mobilizing the savings of the people and lending the same to the traders and industrialists. The bank helps in the uniform development of the different regions in the country" (*Radhaswamy & Vasudevan, 1994: 521*).

Liquidity is a word that can be taken as to perform the life cycle system of financial institution's activities in a perfect manner. It can overall define the

securities management of the cash balance in a systematic way. In this regard, the term liquidity management is used to describe money and assets that are readily convertible into money with a very short span of time. For this different assets exhibits different degrees of liquidity depending upon the ease of turning into cash.

## **1.2 MEANING OF COMMERCIAL BANK**

Commercial Banks are those banks, which perform all kinds of banking function as accepting deposits, advancing credits, credits creation and agency functions etc. They are the most widely diversified and visible player among the financial institutions. They provide short-term credit, medium-term credits and long-term credit for trade and industry. They also operate off-balance sheet functions such as issuing guarantee, bonds, letter of credit, etc.

Commercial banks have been playing vital role in giving a direction to economy development over time by financing the requirements of trade and industry in the country. By encouraging thrift among people, banks have fostered the process of capital formation in the country. Commercial banks draw the community savings into the organized sector which can then be allocated among the different economic activities according to the priorities laid down by planning authorities in the country. In the planned economy, banks make the entire planned productive process possible by providing funds for all types of production incorporated in the plan, regardless of whether the production is in the public sector, joint sector, or in the private sector, or whether the production is undertaken by one types of organization or another. In short, the growth of the economy is tied with the growth of the commercial banks in the economy.

Commercial banks make sound investment in various sectors of the economy, which boost the quality and quantity of investment as well as achieves, its own

objectives of profit maximization. Thus, well-formulated and sound investment policies, coordinated and planned efforts accelerate the pace of economic growth.

Now the commercial banks are being run by banks and financial institution ordinance 2061 which has replaced the previous commercial bank act 2031. According to the ordinance, bank and financial institution are divided into four groups. Commercial banks are placed in group 'A' but not mention explicitly. Functions of commercial banks are as follows:

- ◆ To accept the deposits with or without interest under current, saving and fixed accounts and mobilizes the deposited money very effectively.
- ◆ To provide loan against securities, movable property, company share, or debenture, bills of exchange and promissory notes or invest on them.
- ◆ To issue, accept, discount, buying or selling of bills of exchange and promissory notes and cheques.
- ◆ To deal with foreign exchanges etc.

### **1.3 INTRODUCTION OF SAMPLE ORGANIZATIONS UNDER STUDY**

#### **Nabil Bank Limited (NABIL)**

Nabil Bank Limited was incorporated in collaboration with Emirates Bank International (Dubai) in 1984 in name of Nepal Arab Bank Limited. Nabil Bank Ltd. is the first joint venture bank in Nepal, established in 1984 A.D. under the company act. Dubai Bank Ltd. was the initial foreign joint venture partner with 50% equity investment. The shares owned by DBL were transferred to Emirates Bank International Ltd. (EBIL), Dubai. Later on EBIL sold its entire holding to National Bank Ltd. Bangladesh (NBLB). Nabil bank limited had the official name Nepal Arab Bank Ltd. till 31<sup>st</sup> December, 2001. Hence 50% equity share of Nabil Bank Ltd. are held by NBLB and out of another 50%, financial institutions has

taken 20% and remaining 30% were issued to general public of Nepal. At present 19 branches are operated in different parts of the country.

### **Standard Chartered Bank Nepal Limited (SCBNL)**

Standard Chartered Bank Nepal Limited was incorporated in collaboration with ANZ Grindlays Bank Limited in 1987 as third joint venture bank. The bank was initially incorporated in the name of Nepal Grindlays Bank limited. In 2000, the ANZ Grindlays Bank was amalgamated in Standard Chartered Banking group and 50% stake of former was transferred to the latter by the virtue of amalgamation. Consequently, the name of the bank was hanged as Standard Chartered Bank Nepal Limited. Standard Chartered Bank Nepal Limited is a joint venture with Standard Chartered Grind Lays Bank Ltd. Australia & UK. Standard Chartered Bank Nepal Limited has been in operation in Nepal since 1987 when it was initially registered as a joint-venture operation. Today the Bank is an integral part of Standard Chartered Group who has 75% ownership in the company with 25% shares owned by the Nepalese public. The Bank enjoys the status the largest international bank currently operating in Nepal.

### **Everest Bank Limited (EBL)**

Everest Bank Limited is one of the leading Bank of Nepal. EBL was set up tin private sector and commenced its operation in 8<sup>th</sup> October 1994 AD. It was established in 1992 under the company Act, 1964 with Punjab National Bank (PNB). The Bank is considered as one of the leading and profit going commercial Bank in India having over 100 years of successful banking experience and known for its strong system and procedure. The main aim of EBL is to extend professional banking services to various sectors of the society in the kingdom of Nepal and there by contributing in the economic development of the country. On equity holding PNB has 20% equity participation in its total shareholding and also has undertaken management responsibility under a technical service agreement

and other balance is maintained by Nepalese investors. The promoters of Nepal have shares of 50% in total and rest 30% goes to General Public. EBL has got its authorized capital of Nrs. 750 million and its paid up capital of Nrs.518 million (general equity 378 million and preference share 140 million).

#### **1.4 STATEMENT OF THE PROBLEM**

Liquidity is the most sensible and critical aspect of banks. The managers should be foresighted and able to predict future demand and supply of liquidity. They should know the trends of liquidity demands on the basis of passed experience. In a book published by the World Bank titled *Excess Liquidity & Monetary Overhangs*, it was stated that there is mostly excess liquidity in the financial institutions of the developing economies. Similarly, the IMF opines that excess liquidity is a great problem for developing economics and results not form the dearth of lending opportunities or demanding for and form a number of system & institutional shortcomings (*IMF, 1985; 25*).

Basically, liquidity is maintained to meet regular operation and make schedule payment. Every bank tries to maintain its liquidity position for fulfillment of mainly two purposes. They are precaution motive for unexpected needs and contingencies due to irregularities in cash flow. To fall in this area may severely damage public confidence upon bank. We can imagine the reaction of customers if the cash counter and teller machines is to be closed one morning because the bank is temporarily out of cash and cannot cash cheques. So and must give high priority to meet demands for liquidity. Meanwhile, as we know that the financial institutions are profit oriented and there should be optimum disbursement of deposits in loan and advances so that more and more income can be generated.

Hence it is clear that the problem of liquidity or excess liquidity to be specific is a regular phenomenon in the developing economics. The most important problem

---

that the financial institutions want to know is the appropriate level of liquid assets to meet the threat of withdrawals, give away loans to the customers and to invest in profitable ventures. Without the proper management of liquidity, the above mentioned daily operation of financial institution cannot be met.

Managing liquidity has become very vital in financial institutions. Every bank is therefore, concentrating on liquidity management. They are searching the areas that can safeguard there liquidity to make liquidity position fluently as much as possible. Thus, the specific research questions regarding liquidity management in Nepalese Commercial Banking sector are identified as follows:

- ◆ Are the banks maintaining sufficient liquidity?
- ◆ Are the banks aware for the liquidity requirements?
- ◆ Do the liquidity positions of the banks satisfy their requirement?
- ◆ How are the banks going to manage their liquidity positions to the sufficient balance?

## **1.5 OBJECTIVES OF THE STUDY**

Based on this aspect this field work tries to deal with the study of liquidity position of commercial banks.

### **The Specific Objectives of the Study are:**

1. To analyze the existing liquidity position of the banks by using various ratio analysis.
2. To evaluate the trend of deposit mobilization and trend of different ratios used in the study under various prospects.
3. To examine the relationship between liquidity and profitability of the banks.
4. To provide suggestion and recommendation on the basis of analysis of financial performance for the improvement of financial position.

## **1.6 SCOPE OF STUDY**

Each and every business organization needs appropriate amount of liquidity (i.e. cash and other near cash items) to run its daily operations. The liquidity totally depends on how big or small an organization is. Big organization such as bank, manufacturing organization, finance companies needs huge amount of liquidity. The liquidity requirement is different for different organization. The study is to cover the liquidity position and liquidity requirement of the selected commercial banks. It traces the trend of the liquid assets of the commercial banks of Nepal. It is the arrangement and the allocation of funds such a way that can be drawn immediately without any loss on principle. Even though liquidity exists in each and every business organization, this study is confined only with the liquidity aspect of the commercial banks.

## **1.7 SIGNIFICANCE OF THE STUDY**

Liquidity is much more than holding of non-earning assets. There should be an appropriate equilibrium between the non-earning and earning assets. Banks are always guided by the objectives of earning profits. All financial decisions of bank are the betterment of shareholder's wealth. There should be an effective system of funds allocation in order to safe guard the banks from the danger of shortage of liquid assets or illiquidity. An appropriate level must be achieved between them. The study ponders to find out whether banks are alert or not in this regard and whether liquidity management is duly taken care or not. The study will ascertain possible situations where the banks need additional liquid funds. By this study, liquidity management policy of the bank will be obtained so that shareholders, general public and regulatory authority can raise the relevant questions.

### **The Importance of the Study is Mentioned Below:**

1. To get familiar with some aspect of liquidity by performing various financial analysis.
2. To make the analysis of the liquidity position and come to conclusion about their liquidity position
3. To find out the position of the mentioned commercial banks in the banking field of Nepal.

### **1.8 LIMITATION OF THE STUDY**

Never the less, the analysis performed and conclusion drawn regarding the Liquidity Position of Nepalese Commercial Banks; there is considerable place for arguing about its accuracy and reliability. There are limitations which weaken the conclusion e.g. inadequate data, time and other variable. This thesis simply fulfills the requirement of Masters in Business Studies (M.B.S.) 2<sup>nd</sup> year program. So this study will be limited by following factors:

- Only secondary data available will be analyzed.
- The study period will cover only five fiscal year i.e. 2003/04 to 2007/08 of Standard Chartered Bank and Nabil Bank and Everest Bank Limited.
- There are many factors that affect liquidity of bank, international liquidity and valuation of firm however only related factor will be taken into consideration in this study.

### **1.9 ORGANIZATION STRUCTURE OF THE STUDY**

The present study is organized in such a way that the stated objectives can easily be fulfilled. The structure of the study will try to analyze the study in a systematic way. The study report has presented the systematic presentation and finding of the study. The study report is designed in five chapters, which are as follows:

## **Chapter- I: Introduction**

This chapter deals with the basic concept and background of the study. This chapter consist the statement of the problem, objectives of the study, significance of the study and limitation of the study.

## **Chapter- II: Review of Literature**

Second chapter deals with review of Literature. It includes conceptual reviews, review of pervious thesis, review of journals and articles that are published in different news papers.

## **Chapter- III: Research Methodology**

Third chapter contains research methodology, which includes general introduction, research design, method of analysis, population & sample, sources of data, data processing procedures and analysis of tools & techniques.

## **Chapter – IV: Presentation and Analysis of Data**

This chapter is the heart of the study. This chapter deals with presentation and analysis of relevant data and information through research mythology.

## **Chapter – V: Summary, Major Findings, Conclusion and Recommendation**

Lastly, this chapter summarizes the whole study and states main findings, issues, gaps and offers recommendation for the improvement in future to the related sector and the conclusion of the study.

Appendix and bibliography will be presented in the last part of the thesis to get the clear picture of the study.

## **CHAPTER - II**

### **LITERATURE REVIEW**

The review of literature is a crucial aspect because it denotes planning of the study. The main purpose of literature review is to find out what works have been done in the area of the research problem under study and what has not been done in the field of the research study being undertaken. For review study, the researcher uses different books, reports, journals and research studies published by various institutions, unpublished dissertations submitted by master level students have been reviewed.

It is divided into two headings:

- Conceptual Review
- Review of different Studies

#### **2.1 Conceptual Review**

Liquidity is the status and part of asset, which can be used to meet the obligation. Simply it can be viewed in term of liquidity stored in the balance sheet and in term of liquidity available through purchased funds. The degree of liquidity depends upon the relationship between cash assets plus those assets, which can be quickly turned into cash and the liability awaiting payment (*Engune, 1972: 110*).

The liquidity position of banks is very important to maintain the public faith upon the banks. When a bank fails to repay deposited money on demanded, it leads to the loss of faith upon banks. Lack of adequate liquidity is often one of the first sings that a bank is in serious financial trouble. Therefore in banking, liquidity is very fundamental for smooth operation of daily banking activities.

Some definitions of liquidity given by different writers are as follows:

"Liquidity is the banker's ability to satisfy demand for cash in exchange for deposit" (*R.S Sayers, 1992: 231*).

"An asset is completely liquidity if its owner can count with absolute certainty on leaning into cash at a very short notice and without loss" (*Manning Decay, 1989:240*).

As there are differing views of different writers about liquidity so is the issue of maintaining liquidity according to its principle i.e. the real bills doctrine, the shiftability theory, the anticipated income theory and liability management theory. The prediction of liquidity needs is always not earning and accumulating. So every institution should manage their liquidity in such a way that they will be able to ensure the fund-capacity to meet all normal business commitment at a reasonable price at all time. The earning of liquidity should refer to the money stock in the banks and financial institutions and the assets that can be converted as soon as the demand made or the capacity of commercial banks to fulfill the need of depositors for cash.

Liquidity of the bank should be maintained according to the standard. Excess liquidity as well as lack of liquidity can be considered as bad symptoms to the firm. On the other hand the bank cannot operate its internal and other marketing function properly. If the bank does not hold adequate liquidity, it will not be able to take advantage of favorable business opportunities and meet emergencies such as fires or competitors marketing campaign. A very high degree of liquidity is also bad, here assets remain idle which adds nothing to bank's earning. The firm's funds will be unnecessarily tied up in current assets which could be used otherwise.

Thus, researcher can say that the skill of bank to hold adequate liquidity helped to earn its reputation. Thus, researcher can say that it is optimum necessity of the bank to maintain a proper balance between high liquidity and low liquidity. Liquidity is the word that the banker uses to describe his ability to satisfy demand for cash in exchange for deposit. Therefore liquidity management is much more important than we realize, because a bank can be closed if it cannot raise enough liquidity even though technically it may still be solvent.

### **2.1.1 Theories of Liquidity**

Basically the principle theories are specially designed for banking sectors but it seems not much difference between application of banking sector and financial sector. So in this prospect conflicts between objective of liquidity, safety and probability relating to finance companies can also be highlighted firm given theories. Hence economists have tried to resolve these conflicts by laying down certain theories form time to time. These principle or theories, in face govern the distribution of assets keeping in view these objectives. They have also come to be known as the theories of liquidity management, which are discussed as under:

- ◆ The real bills doctrine
- ◆ The shiftability theory
- ◆ The liability management

#### **i) The Real Bill Doctrine**

The real bills doctrine states that any bank should advance only short-term self-liquidating productive loans to business firms. Self liquidating loans are those, which are meant to finance the production, storage, transportation and distribution. Which such goods are ultimately sold, the loans are considered to liquidate themselves automatically such short-term self-liquidation productive loan passes three advantage. Firstly they possess liquidity that is why, they liquidate

themselves automatically. Second since they mature in the short run and are for productive purpose there is not risk of their running into bad debts. Thirdly, being productive such loans earn income for the bank.

**ii) The Shiftability Theory**

*H.G Mouiton* who asserted that if any bank should maintain a substantial amount of assets that can be shifted into the other banks for cash without material loss in case of necessity, then there is no need to rely on maturities propounded the shifted ability theory of liquidity. According to this view, an asset to be perfectly shifted able must be immediately transferable without capital loss when the need for liquidity arises. But in general crises requires that all banks should possess such assets which can be shifted into the central bank which is the lender of the last resort. This theory has certain elements of truth.

**iii) The Anticipated Income Theory**

*H.V Porch* developed the anticipated income theory in 1944 on the basis of the practice of extending term loans by the United State of America (USA) commercial bank of the practice of extending term loan by U.S.A commercial banks. According to this theory, regardless of the nature and character of a borrower's business, the bank or any financial institution plans the liquidation of the long term loan from the anticipated income of the borrower. A term loan is for a period exceeding one year and extending to less than five years. It is granted against the hypothecation of machinery, stock and even immovable property. The bank puts restriction on the financial activities of the borrower while granting loan. At the time of granting a loan, the bank takes into consideration not only the security but also anticipates earning of the borrower. In fact, anticipated income is the main consideration.

This theory is superior to the real bill doctrine and the shiftability theory because it fulfills these objectives of liquidity, safety and profitability. Liquidity is assured to the bank when the borrower saves and repays the loans regularly in installment. It satisfies the safety principle because the bank grants a loan not only on the basis of a good security but also on the ability of the borrower to term loan is assured of regular income. Lastly, the term loan is highly beneficial for the business community, which gets fund for medium-term.

#### **iv) The Liabilities Management Theory**

This theory was developed in The 1960's. According to this theory there is no need for banks to grant self-liquidating loans and keep liquidity assets because they can borrow reserve money in the money market in case of need. A bank can acquire reserves by crating additional liabilities against it, form different sources. These sources include issuing of tie, certificates of deposit, borrowing form other commercial banks, borrowing form central bank, raising of capital funds by issuing shares, and ploughing back profit.

#### **2.1.2 Forms of Liquidity**

The liquid resources of a firm may be kept in various forms: cash balance in current account, reserve drawing power under a cash credit or overdraft arrangement, short term marketable securities like treasury bills, and short-term deposits with other companies (called inter-corporate deposits) (*Chandra,1984:112*).

Here are some of the pros and cons of the forms of maintaining liquidity.

Cash balance in current account provides the highest degree of liquidity. However, the interest earned on current account balance is nil. Hence it is costly to keep cash

balance in current account. Yet, no firm can conceivably do without some balances in current accounts.

Reserve drawing power under a cash credit or overdraft arrangement may appear to be an economical way of maintaining liquidity. The firm is not required to pay any interest on the unutilized portions of the cash credit or overdraft limits, yet it has a ready access to the undrawn amounts. There is, however, a catch here. If a part of the cash credit or overdraft limit, kept in reserve to meet contingencies, remains unutilized over a prolonged period of time, the bankers may reduce the cash credit or overdraft limit. This seems to be the reason why many firms draw fully on these limits, for some periods of time at least, even if it means keeping the funds virtually idle in their current accounts.

Investment in treasury bills and other short-term marketable securities earns a low rate of interest. Further, unless these are held till date of maturity the firm may incur more transaction costs. This form of liquidity very secured, but may not have much appeal to corporate firms.

Depositing money with other companies, on a short-term basis, is fairly attractive in terms of rate of return. Presently, inter-corporate deposits earn 15 to 21 percent rate of interest. Typically, these deposits are made for a period of 2 to 6 months, often with a right to recall at a month's notice. While very attractive from the point of view of rate of return, inter-corporate deposits suffer from two disadvantages: (i) a minimum of one month's time may be required to convert them into cash, and (ii) degree of risk associated with them is higher compared to other forms of maintaining short-term liquidity which are virtually risk free (*Chandra, 1984:112*).

### **2.1.3 Determinants of Liquidity Management**

Bank needs liquidity to meet loan demands, deposit withdrawal and for maintaining cash reserve ratio as prescribed by central bank. So far the proper management of banking needs good strategy to follow. Many factors affect the liquidity of a bank. They are:

#### **The External Factor Includes:**

1. Primary Interest Rate of bank: If interest rate is high cash demand is low and liquidity need is low.
2. Saving and investment situation: If income and saving scale of people is high, lows liquidity. If investment in commercial field is high, high liquidity
3. Growth and scheming position of the financial market: If financial market of bank is in growth and prosperity then low liquidity and it opposite, high liquidity.
4. Central Bank requirement
5. If the Supply and demand position of loan, saving and investment situation

#### **The Internal Factors are:**

1. Lending policy: great quantity of long term investment needs high liquidity. If short term loan policy, low liquidity.
2. Management Capacity: If management is efficient and ready to bear rise, low liquidity is needed.
3. Strategic planning and funds flow situation: Liquidity depends upon planning and strategy.

The degree of liquidity depends upon the relationship between cash, assets plus those assets, which can be quickly converted into cash. The bank should have proper strategy to invest in those assets which can be quickly converted into cash.

### **2.1.4 Measuring Liquidity**

Liquidity measures are needed in order to estimate the likelihood of a firm being able to meet its fixed financial obligation, especially payments to creditors. In measuring the ability of a firm to generate cash, here we are using the term "Liquidity", although some analysts would prefer the term "solvency" when the analysis is measuring the long-run survival ability of the firm.

Both managers and external observers of a corporation must frequently rely on financial reports to judge the liquidity of the firm. For example, a bank officer considering a loan request will use financial statements in an attempt to measure a corporation's financial liquidity to determine the likelihood to the firm being able to repay the loan when it comes due. Since bank loans are generally for short periods of time, bank officer will primarily be interested in the firm's short-term survival prospects. But even a long-term investor, such as a bond buyer or an investor in survive in the short run for it to prosper in the long run. Thus, the measures of financial liquidity of a corporation are important information inputs for all persons evaluating the financial affairs of a corporation.

### **2.1.5 Technique of Liquidity Management**

#### **i. Traditional Model**

According to traditional model of liquidity management, it is related to strong liquidity in bank investment or to use control background to use as temporary sources of fund. As this idea is to swift liquid assets into cash and to meet the needs of bank for increased loans demand or deposit to withdrawal is also called as shiftability or assets conversion approach. This approach of liquidity is based on safety at the expresses of profitability; under this approach storing of liquidity can be classified into four types.

◆ **Primary Reserve**

The primary reserve is that part of bank, cash or reserve which can be arranged more than the required statutory such as Cash Reserve Ratio (CCR) or Statutory Liquidity Ratio (SLR). Here the excess statutory reserve can be used for working reserve to avoid impressing cash storage.

◆ **Secondary Reserve**

It includes storing of liquidity in short term government securities such as insuring in treasury bills. It also includes high quality securities with very low default risk.

◆ **Territory Reserve**

It is arranged to provide liquidity protection against long term requirement which is related to increase loan demand or reduce deposit inflow government securities with maturity period of one or two year are includes in it.

◆ **Investment Reserve**

The security with maturity period of more than 2 years is included on investment reserve.

**ii. Liquidity Management Model**

Under the liquidity management, any institution may generate liquidity by managing its profitability. Although traditional model shows and important part of cash management, it doesn't help to show the appropriate utilization of fund. Therefore several models have been developed to determine cash balance and to maintain profit position. One of the techniques of mixing the cash balance with loan investment is Baumol Model which is based on the high low cash balance. The following models are described as follows:

### ◆ **Baumol Model**

According to this model, minimizing the opportunity cost of holding cash and maximizing the return on the fund, the cash balance should be maintained at A minimum level and the funds not required for immediate use, be invested. Baumol model identifies the cash maintenance as analogous to inventory maintenance and demonstrates that the model of economic order quantity.

Baumol model is based on the assumption that:

- i. Cash is used to constant rate
- ii. The periodic cash requirement is more or less save
- iii. There are some cost such as transaction cost that decrease cash balance

Hence Baumol has conducted that minimum size is the amount of cash that is enough to start with at the beginning of a period to meet the cash need of that period transaction.

### ◆ **Miller Mode**

Due to high opportunity cost, all liquidity need should not be maintained in cash that bears no returns. It is necessary to maintain cash balance for transition and compensation balance requirement but the liquidity need for the other purpose doesn't need to be in cash. Therefore any financial institution can take advantage by appropriately balancing the available funds between cash and loan investment. The size of cash needs depends on the pattern & degree of regulating inflow and outflows. Hence, Miller had developed a model known as Miller Model, which takes into account the realistic pattern of cash flow and prescribes which and how much to transfer format to investment account vice-versa. This model is based on the assumption that the daily net cash flows receipt minus payments is random is size as well as in the matter of negative or positive flow. Hence this model set to

range of high and low limits within which cash balance is allowed to fluctuate and set the target cash balance between these two limits.

### **2.1.6 Importance of Liquidity**

Commercial banks are business firms like all other business firms which attempt to earn profit as high as possible. The bank earns its profit primarily in the form of interest on its earning assets, loan and investment in maximizing profit, it seems reasonable that bank should invest as much as possible it could result into great danger if it could not repay its depositors as demand liquidity is important too, to gain outside confidence and for bank's own survival through difficulties and day to day transaction. The main importance of liquidity is explained below:

#### **◆ To Meet the Demand of Depositors**

The bank must safeguard its position by maintaining sufficient liquidity. The bank should be able to make prompt payment of cash as demanded by its depositors otherwise will lose its customer's confidence.

#### **◆ To Meet the Loan Demand**

In order to increase profitability, bank should maintain adequate liquidity to meet demand of borrowers. In case the demand for loan by excellent borrowers could be fulfilled, the bank may lose its customers who are the sources of its high profits.

#### **◆ To Maintain Cash Reserve Ratio**

Each bank must follow the directive of the central bank; otherwise the very bank may be punished. The bank can maintain minimum cash reserve ratio only if it is in good liquidity position.

### **To Maintain Administrative Expenses**

A bank having good liquidity position holds adequate cash enough for its internal operation or says administrative expenses, the bank should satisfy its personnel by allowing attractive salary, and bonus etc and it will be able to meet other expenses relating to its management affairs.

#### **◆ To Maintain Contingencies**

Bank should maintain certain position of liquidity for contingencies which may be required to save the bank from future risk such as fire, stickers' competitors etc and other economic instabilities.

#### **◆ Expansion and Growth**

Nature and environment is changing continuously. Bank should adopt the environmental factors for continuous existence. For continuous survival, bank should expend amount on expand and growth program for which liquidity is needed. In this point of view, also liquidity is the most important factor of modern bankers.

Thus from above explanation researcher can conclude that maintaining adequate liquidity is fundamental function of bank. Good liquidity position of any bank helps to earn its goodwill.

### **2.1.7 Demand and Supply of Bank Liquidity**

Bank should maintain sufficient level of liquidity in order to meet immediate nature liabilities and to satisfy the depositors claim for cash when demanded. To maintain the sufficient amount, the bank should observe demand and supply of bank liquidity.

## **Demand of Bank Liquidity**

In the bank business, liquidity is demanded for following purpose:

### **◆ To Meet Depositors Claim**

In order to operate banking business, sufficient cash balance or sufficient level of liquid assets must be maintained by all bankers. The requirement of maintaining cash balance as liquid assets depends upon amount of depositors.

### **◆ To Meet Cash Reserve Ratio (CRR)**

Each commercial bank must maintain satisfactory minimum cash reserve ratio as prescribed by central bank because the directive of central bank must be followed by each commercial bank. At present in Nepal each commercial bank must maintain at least 2% cash in hand in their safety valve 7% of total value of current and saving account and 4.5% of total fixed deposit must be maintain as cash reserve with Nepal Rastra Bank. When cash reserve ratio is increased by the central bank, the demand for liquidity is also simultaneously increased.

### **◆ To Disburse Loans and Advances**

Commercial banks should earn profit for survival .So they must advance loan against interest. After maintaining minimum liquidity balance (cash reserve ratio, and statutory liquidity ratio), bank liquidity also demanded by the borrowers. Hence banks need to maintain certain level of liquidity to approve loan proposal.

### **◆ Operating Expenses and Taxes**

It is the expenses incurred selling banking services. It also includes taxes. Banks need certain liquidity to meet administration expenses such as payment for salary, rent stationery, telephone, electricity, taxes etc. Bank should control the administration expenses to minimize the level of liquidity and maximize the investment.

- ◆ To meet off balance sheet liabilities like Letter of Credit (L/C) outstanding, guarantee outstanding, forward contract etc.
- ◆ To meet contingencies like priority sector lending
- ◆ Payment of interest, commissions, dividends

### **Supply of Bank Liquidity**

The supply of liquidity of the banks will arise from the following headings of its assets and liabilities:

#### **◆ Cash Balance**

The main supply of liquid of a bank comes from cash balance held by it. So cash balance is the first source of liquidity. Cash balance is also called the first line of defense of bank

#### **◆ Balance with Other Banks**

The commercial bank should maintain current account with local and foreign banks for transaction purpose. The banks may maintain more balance with the central bank in excess of required cash reserve ratio will be the source of liquidity.

#### **◆ Money of Call and Short Notice**

Bank utilize some portion of fund in inter bank call money or overnight placement of fund or advancing for very short period. These funds can be called back with short notice. So it is called as second line of defense of liquidity.

#### **◆ Public Deposits**

The main source of supply of liquidity is the deposit received from different individuals and institutional deposition. This is the most important source of bank liquidity because majority of bank fund is collected through this source. The

successful operation and existence of a commercial bank depends upon the proper and profitable mobilization of deposit.

◆ **Loan Repayment**

Bank loans have predetermined time period of maturity and rate of interest. All loans are repaid into bank after expiry of due date. Hence repayment of loan is also known as the source of bank liquidity.

◆ **Reserve Funds**

Banks should open different types of reserve funds to use when needed. Reserve fund are created form the profit. Certain percentage of annual profit is appropriated to various reserve funds such as general reserve, reserve for doubtful debts, depreciation fund etc. Such reserve funds are also one to the source of bank liquidity.

◆ **Line of Credit From Agency Bank**

The other sources of short term capital may be available from foreign banks such as line of credit and over drafting facility allowed by different foreign banks outside the country.

◆ **Investment in Government (Govt.) Securities**

At the tome of surplus fund the bank may invest such funds in government securities is also good sources of investment.

### **2.1.8 Predicting Banks Liquidity Needs**

Banks liquidity needs can be predicted from following factors:

#### ◆ **Growth of Banking Habit**

Incase people don't transact their business activities like receipts and payment through cheque and credit cards the actual cash payment by the bank will decline thus resulting in the decline of liquidity based in same ratio in the other hand of all most people transact through bank then bank is included to maintain sufficient liquidity.

#### ◆ **Existence of Clearing House**

If there is clearing house arrangement the bank will not need to handle all cash because settlement of going and receiving payments will be done through the debit and credit entries made in the a/c book of trading house.

#### ◆ **The Type and Size of Deposit Accounts**

If the bank holds deposit accounts mainly it needs not maintain more liquidity because these deposit will be repaid only after the expiry of fixed period in case of saving account (a/c) withdrawals will be regulated and incase of current a/c deposits are withdraw periodically. The withdrawals might be expected at the time of price fluctuations.

#### ◆ **Occasion and Festival Period**

When people are in festival mood like in Dashain or Tihar or when they are to celebrate certain occasions like marriage ceremonies, they need mote money at that time more liquidity needs can be predicted.

#### ◆ **Nature of Advance and Facilities of Refinance**

The liquidity need of the bank depends in the credit policy of central bank of securing and refinance facility or the loans already granted by commercial banks and discounting of bills if a bank has utilized discounting business and approved

loans then the central bank may provide refinancing facilities in this case bank can predict less liquidity needs.

## **2.2 A Brief Overview of Liquidity**

Basically, liquidity gives a brief idea about the continuous cash flow management. Liquidity is the availability of cash at the time needed at a reasonable cost. The capacity of bank to exchange cash for deposit is the liquidity. It is the asset of the banks in form of cash and near about cash. Near about cash means the asset, which can be converted into cash immediately without losing the value of them. The bank's capacity to meet immediate maturing liabilities is the liquidity of banks.

Liquidity is that part of the total assets, which can be paid immediately to meet the current obligation. A commercial bank needs a high degree of liquidity in its assets. The liquidity of an asset refers to the ease and certainty with which it can be turned into cash. Banks must hold sufficient liquidity in form of cash and liquid assets such as government securities CRR in central banks. So those banks never fail to meet daily cash demand. Ensuring adequate liquidity is one of the most important task faced by the bank management. A bank is considered to be liquid if only it has ready access to immediately spendable funds at reasonable cost at the time these funds are needed. This suggests that a liquid bank has the right amount of immediately spendable funds.

The commercial banks or financial institution should keep the stock of liquid assets according to the ratio of liability of deposit fixed by the bank according to section (25) of financial company Act 2042 (1985). The term of liquid assets represent the assets mention as follows:

- ◆ Nepalese bank notes and currencies deposited in the company.
- ◆ Deposit of the company in the bank or any other commercial banks.

- ◆ Government Bonds
- ◆ Any other assets as specified by the bank from time to time

It defines the liquid assets of the commercial banks and regarded liquid assets as cash stock of the commercial banks, short term and security, short-term business securities, the government and the treasury bills. It is clear from it that the liquid assets mean the cash and the asset, which can be converted immediately in the time of need.

All assets (real and financial) differ in degrees of liquidity. Generally, financial assets, especially bank deposit and stocks and bonds issued by major corporations tend to be highly liquid. Money is the most liquid asset because it need not be converted into any other form to be spent. Unfortunately, the most liquid assets, including money, tend to carry the lowest rate return. One measure of the cost of holding money is the income forgone by the owner who fails to convert his or her money balances into more profitable investment in real or financial assets. The rate of interest determined by the financial system is a measure of the penalty suffered by an investor for not converting into income-earning assets. Thus liquidity management is much more important than we may realize because a bank can be closed if it cannot raise enough liquidity even though technically it may still be solvent.

Present section deals about concept or findings of earlier scholars on the concerned field of the study. It helps to develop the study as link in a chain of research that is developing and emerging the knowledge about the related field.

The effort has been made in this present section to examine and review some related articles published in different economic journals, bulletins, magazines and college, journal published by various institution booklets, magazines and previous dissertation related to the subject matter.

## **3.6 METHOD OF ANALYSIS**

Various financial analysis tools have been used in this study. The analysis of data will be done according to pattern of data available. The relationship between different figures related to study topic will be drawn out using ratio analysis. The various calculated results are then tabulated under different heading which are later on compared with each other to interpret the result. The details of calculation that cannot be shown in the body part are presented in the appendices at the end.

## **3.7 ANALYSIS OF TOOLS & TECHNIQUES**

On the basis of historical data both financial and statistical tools are used to analyze different variables.

### **3.7.1 Financial Analysis Tools**

Financial ratios are the basic tools of financial analysis. The financial problems of a bank can be ascertained by examining the behavior of these ratios. Liquidity ratios measure the bank's ability to pay current debts while profitability ratios measure the bank's overall efficiency of operation. Similarly turnover ratio measures the utilization of bank's resources. These financial ratios help us to find the symptoms of problems. The cause of any problem may be determined only after locating the symptoms. As far as our concern, the objective of the ratio analysis is to determine whether or liquidity position, profitability and risk position of the banks.

#### **3.7.1.1 Liquidity Ratio**

The liquidity of a business firm is measured by its ability to satisfy its short-term obligation as they come due. Liquidity ratios measure the bank's ability to meet its maturing short-term obligations. It is a well known fact that assets vary with respect to the time and effort required to liquidate them. Liquidity thus refers to 'nearness to cash'. The nearer an investment is to cash, the lower is its rate of

return. The large size of cash is associated with high liquidity and low profitability. The practice of holding a large size of cash is an expensive affair. With too much liquidity the possibility of its misuse becomes high. On the other hand, too little liquidity may lead to server cash problems which can result in inability to depositor's demand. Banks usually maintain liquidity as a means of meeting short-term expected and unexpected requirements for net cash outlays, such as unanticipated investment opportunities and unanticipated expenses.

### **i) Current Ratio**

This ratio shows the relation between current assets and current liabilities. The current ratio is calculated by dividing current assets by current liabilities. The objective of this ratio is to measure the ability of the firm to meet its short term obligation.

Current assets involve cash and Bank balance, money at call or short notice, loans and advances, overdrafts, bill purchased and discounted investment on government securities and other interest receivables and miscellaneous current assets. Similarly, current liabilities involve deposit and other short term loans, tax provision, dividend payable, bills payable, staffs bonus and sundry liabilities. The standard ratio is 2:1 but accurate standard depends upon circumstances and nature of business. Current ratio can be measured as,

$$\text{Current Ratio} = \frac{\text{Current Assets}}{\text{Current Liabilities}}$$

### **ii) Cash and Bank Balance to Current Assets Ratio**

This ratio measures the percentages of liquid assets i.e. cash and Bank balance among the current assets of a firm. Higher ratio shows the higher capacity of firms to meet the cash demand.

$$\text{Cash \& Bank Balance to Current Assets Ratio} = \frac{\text{Cash \& Bank Balance}}{\text{Current Assets}}$$

Hence, cash and banks balance includes cash in hand, foreign cash and foreign banks.

### **iii. Liquid Fund to Current Liabilities Ratio**

Since cash and bank balances is first line of defenses , measuring its liquidity ratio depending on liquid fund is more significant .Liquid fund comprises of those assets, which can be converted into cash within short period without any decline in their value . Cash in hand, balance with NRB, balance with other financial institution, balance with domestic bank balance held abroad, call money are included in calculating the liquid fund. This ratio measures banks ability to discharge its current liability in an adverse condition without undergoing its liquidity risk.

$$\text{Liquid Fund to Current Liabilities Ratio} = \frac{\text{Liquid Fund}}{\text{Current Liabilities}}$$

### **iv. Liquid Fund to Total Deposit Ratio**

The deposit constitutes the major parts of the bank liability. Flow of this liability is always certain in the banks liquidity management. Hence, the ratio of liquid fund to total deposits indicates the banks strength to meet uncertain outflow of deposit.

$$\text{Liquid Fund to Total Deposit Ratio} = \frac{\text{Liquid Fund}}{\text{Total Deposit}}$$

#### **v) Investment on Government Securities to Current Asset Ratio**

This ratio is used to find the percentage of current assets invested on government securities, treasury bills and development bonds. This ratio can be calculated dividing the amount of investment on government securities by the total amount of current assets and can be stated as follows,

$$\text{Investment of Government Securities to Current Asset Ratio} = \frac{\text{Investment on Government Securities}}{\text{Current Assets}}$$

#### **vi) Loan and Advances to Current Assets Ratio**

Bank's major earning source is loan. Loans are also taken as current assets as most of them are maturing within a period of one year and represent short term disbursement. A Bank should not allocate all funds in loan and advances so it must maintain in an appropriate level. In order to calculate the proportion of loan and advances to total current assets, the ratio is obtained by dividing loan and advances by current assets.

$$\text{Loan \& Advances to Current Assets Ratio} = \frac{\text{Total Loan \& Advances}}{\text{Current Assets}}$$

#### **vii. Saving Deposit to Total Deposit Ratio**

Saving deposit is deposited by public in a bank with an explicit objective of increasing their wealth. So interest rate plays a significant role. In other deposits like fixed and current deposits are not interests sensitive. Fixed deposits have fixed term to maturity and fluctuation in interest rate does not allow its movement in short-term. Current deposit does not carry an interest rate. So, it is not sensitive towards interest rate. Saving deposit to total deposit ratio measure the banks ability to meet its sudden outflow of saving deposits due to change in interest rate. This ratio can be calculated by dividing the amount of saving deposit by the amount of total deposit which is given as under:

$$\text{Saving Deposit to Total Deposit Ratio} = \frac{\text{Saving Deposit}}{\text{Total Deposit}}$$

### **viii) Cash and Bank Balance to Total Deposit Ratio**

Cash and bank balance are the most liquid current assets of a firm, cash and bank balance to total deposit ratio measures the percentage of most liquid assets to pay depositors immediately. This ratio is computed dividing the amount of cash and bank balance by the total deposits. It can be presented as,

$$\text{Cash and Bank Balance to Total Deposit Ratio} = \frac{\text{Cash \& Bank Balance}}{\text{Total Deposits}}$$

Where, total deposits consist of deposits on current account; saving account; fixed account, money at call and other deposits.

### **ix) Investment on Government Securities to Total Deposit Ratio**

This ratio is used to find the percentage of total deposit invested on government securities, treasury bills and development bonds. This ratio can be calculated dividing the amount of investment on government securities by the total amount of total deposit and can be stated as follows,

$$\text{Investment of Government Securities to Total Deposit Ratio} = \frac{\text{Investment on Government Securities}}{\text{Total Deposit}}$$

### **3.7.1.2 Turnover Ratio**

These ratios indicate the efficiency with which a bank employs its resources. Turnover ratios involve comparisons between the level of loan and advances and various deposits. These ratios state that there should be a kind of balance between deposit and loan and advances. This study simply reviews the behaviors of

turnover ratios over the period of time so as to see whether or not there has been efficiency utilization of various deposits.

**i) Total Investment to Total Deposit Ratio**

Investment is one of the major sources of earning money. This ratio includes how properly firms' deposits have been invested on government securities and shares and debentures of other companies. This ratio can be computed dividing total amount of investment by total amount deposit collection, which can be shown as;

$$\text{Total Investment to Total Deposit Ratio} = \frac{\text{Total Investment}}{\text{Total Deposit}}$$

**ii) Loan and Advances to Total Deposit Ratio**

This ratio is calculated to find out how successfully the selected banks and finance companies are utilizing their total collections/deposits on loan and advances for the purpose of earning profit.

$$\text{Loan \& Advances to Total Deposit Ratio} = \frac{\text{Total Loan and Advances}}{\text{Total Deposit}}$$

**iii) Loan and Advances to Saving Deposit Ratio**

Bank's major earning source is loan. Loans are also taken as saving deposit as most of them are maturing within a period of one year and represent short term disbursement. A Bank should not allocate all funds in loan and advances so it must maintain in an appropriate level. In order to calculate the proportion of loan and advances to saving deposit, the ratio is obtained by dividing loan and advances by saving deposit.

$$\text{Loan \& Advances to Saving Deposit Ratio} = \frac{\text{Total Loan \& Advances}}{\text{Saving Deposit}}$$

#### **iv) Total Investment to Saving Deposit Ratio**

Investment is one of the major sources of earning money. This ratio includes how properly firms' saving deposits have been invested on government securities and shares and debentures of other companies. This ratio can be computed dividing total amount of investment by total amount saving deposit collection, which can be shown as;

$$\text{Total Investment to Saving Deposit Ratio} = \frac{\text{Total Investment}}{\text{Saving Deposit}}$$

#### **3.7.1.3 Profitability Ratio**

In every bank profitability is major concern. Profit is the objective of all the policies framed and decisions taken by management. These ratios enable one to judge the overall performance of the corporation. Here, we analysis interest income to interest expenses ratio, interest earned to working fund ratio, Interest paid to working fund ratio, Net profit to working fund ratio, Net profit to total deposit ratio.

#### **i) Total Interest Earned to Interest Expenses**

This ratio shows the relationship between interests earned amount and interest expenses borrowed by the Bank. Total interest earned is that amount which is earned investing in different sectors by the Bank in an accounting year. Whereas, interest expenses is that amount which is expenses in different sectors by the Bank in an accounting year. This ratio is calculated as follows;

$$\text{Total Interest Earned to Interest Expenses} = \frac{\text{Total Interest Earned}}{\text{Interest Expenses}}$$

## **ii) Return on Loan and Advances Ratio**

Return on loan and advances ratio shows how efficiency of the Banks and finance companies have utilized their resources to earn good return from provided loan and advances. This ratio is computed to divide net profit/loss by the total amount of loan and advances. It can be mentioned as;

$$\text{Return on Loan \& Advances Ratio} = \frac{\text{Net Profit or Loss}}{\text{Total Loan \& Advances}}$$

## **iii) Return on Total Assets**

This ratio establishes the relationship between net profit and total assets. This ratio is also called 'profit to assets ratio'. It is calculated dividing return on net profit/loss by total working fund and can expressed as;

$$\text{Return on Assets} = \frac{\text{Net Profit After Tax}}{\text{Total Assets}}$$

## **iv. Net Profit to Total Deposit Ratio**

Net Profit to total deposit ratio reflects the extent to which the banks are success to mobilize deposit to earn profit. Higher ratio is preferable. We have,

$$\text{Net Profit to Total Deposit} = \frac{\text{Net Profit}}{\text{Total Deposit}}$$

### **3.7.2 Statistical Analysis Tools**

The following statistical tools are specifically used in the study.

#### **3.7.2.1 Trend Analysis**

Trend analysis has been adapted to measures the trend behaviors of the banks. The tools that are used to show grandly increase or decrease of variables over a period

of time is known as trend analysis. With the help of trend analysis the tendency of variables over the period can be seen clearly.

For any given value of independent variable  $x$ , the estimate value of  $y$  denoted by  $y_c$  given is

$$Y_c = a + bx$$

$a = y$  intercept or value of  $y$  when  $x = 0$

$b =$  slope of the trend line or amount of change that comes in  $y$  for a unit change in  $x$

### 3.7.2.2 Mean or Average

The average value is a single value within the range of the data that is used to represent all the values in the series. Since an average is somewhere within the range of data, it is also called a measure of central value. Since an average represents the entire data, its value lies somewhat in between the two extremes i.e. the largest and the smallest items there are various types of average. Among them, we take arithmetic mean for measuring average. It is so popular that the word Mean or Average alone without qualification is implied to denote these particular types of average value is obtained by adding together all the terms and by dividing this total by the number of items. The formula is given below:

$$\bar{X} = \frac{\sum X}{N}$$

Where,

$\bar{X}$  = Arithmetic Average

$\sum X$  = Summation for total value of the variables

$N$  = Numbers of items

### 3.7.2.3 Standard Deviation

The standard deviation measures the absolute dispersion. It is said that higher the value of standard deviation the higher the variability and vice versa.

The formulas to calculate the Standard Deviation are given as follows:

$$= \sqrt{\frac{\sum d^2}{N}}$$

Where,

† = Standard Deviation

$\sum d^2$  = Sum of the squares of the deviations measured from the arithmetic average

N = Number of Items

The standard deviation calculated in the above formula gives an absolute measure of dispersion. Hence, where the mean value of the variables is not equal, it is not appropriate to compare two pairs of variables based in Standard Deviation only.

### 3.7.2.4 Coefficient of Variation

The coefficient of variation is the corresponding relative measure of dispersion comparable across distribution, which is defined as the ration of the standard deviation to the mean expressed in resulting percentage. It is used in such problem where we want to compare the variation is greater is said to be more variable or conversely less consistent, less uniform, less stable or less homogeneous. On the other hand , the series for which co-efficient of variation is less is said to be less variable or more consistent more uniform, more sable or more homogeneous The coefficient of variation measures the relative measures of dispersion, hence capable to compare two variables independently in terms of their variability.

$$\text{Coefficient of variation} = \frac{\text{Standard Deviation}}{\text{Mean}} \times 100\%$$

$$\text{C.V.} = \frac{\sigma}{\bar{X}} \quad \text{Where,}$$

C.V = Co-efficient of variation

$\sigma$  = Standard deviation

$\bar{X}$  = Mean / or average

The Karl Pearson Coefficient of Correlation ( $r$ ) always falls between -1 to +1. The value of correlation in minus signifies the negative correlation and in plus signifies the positive correlation. As the value of correlation coefficient reaches near to the value of zero, it is said there is no significant relationship between the variables.

The Coefficient of Correlation shall be interpreted based on probable error (P.E.r). If the value of correlation coefficient is greater than 6 times the value of probable error, the correlation coefficient is deemed as significant and reliable. If the value of correlation coefficient is less than probable error, the correlation coefficient is said to be insignificant and there is no evidence of correlation.

## **CHAPTER - IV**

### **PRESENTATION AND ANALYSIS OF DATA**

To achieve the objective set in chapter, data are presented and analyzed in this chapter. On the whole, this chapter is related to quantity analysis of various ratios.

This chapter is also called the central nervous system, which helps to provide conclusion after detailed analysis, so that proper recommendation can be given at the end of the study. The gist of the research work presents in the form of major findings, vital issues and recommendation in the fifth chapter. In this way this chapter makes proper linkage and associates with every chapter.

On regarding mathematical presentation part this chapter presents the various financial ratios that affect performance of the banks. These ratios are the sub-indicator of financial position of a company that compare with the help of statistical tool via trend analysis, mean standard deviation co-efficient of variation and co-relation.

#### **4.1 FINANCIAL RATIO**

Financial ratios are presented as follows:

##### **4.1.1 Liquidity Ratio**

###### **i. Current Ratio**

Current ratio is one of the most widely used measures of liquidity. It measures the degree to which current assets cover current liability. A higher ratio indicates greater assurance of ability to pay current liability. A low ratio indicates that the bank may not be able to meet short-term obligation. A high ratio indicates excessive current assets leading to under utilization of the bank's resources. Whether a current ratio is high or low is difficult to determine. For this the

financial analyst has to consider the bank past ratios and /or the ratios of similar bank.

The current assets include cash and bank balance, cheques in hand, balance with NRB, money at call and short notice, investment in government securities, bills purchased and discounted, loans and advances and other current assets. Similarly, current liability includes borrowing form other banks, deposits, bills payable and other current liabilities. We have,

$$\text{Current Ratio} = \frac{\text{Total Current Assets}}{\text{Total Current Liabilities}}$$

The current ratios of NABIL, SCBNL and EBL during the study period are presented in the table below.

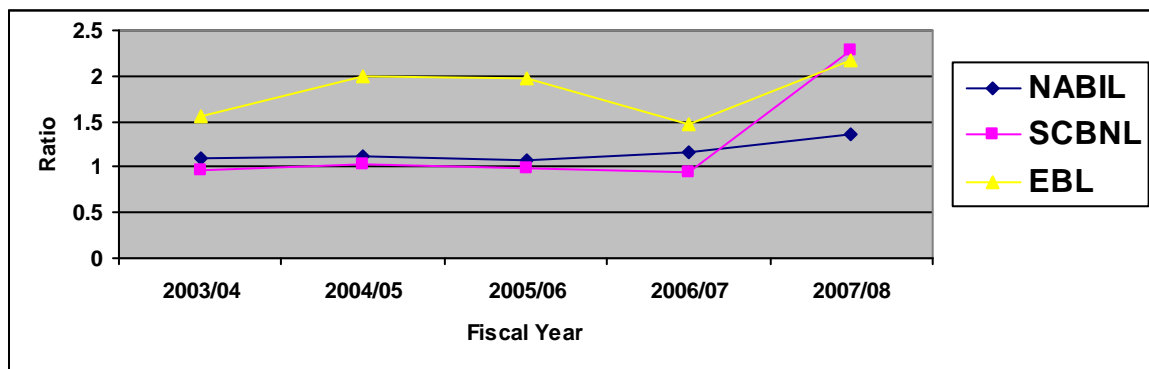
**Table No. 4.1**  
**Current Ratio**

<b>BANKS</b>	<b>2003/04</b>	<b>2004/05</b>	<b>2005/06</b>	<b>2006/07</b>	<b>2007/08</b>	<b>Mean</b>	<b>S.D</b>	<b>C.V</b>
<b>NABIL</b>	1.099	1.113	1.0732	1.155	1.35	<b>1.16</b>	<b>0.1308</b>	<b>11.27%</b>
<b>SCBNL</b>	0.9698	1.0226	0.981	0.946	2.29	<b>1.24</b>	<b>0.5859</b>	<b>47.25%</b>
<b>EBL</b>	1.56	2.00	1.98	1.47	2.18	<b>1.84</b>	<b>0.3088</b>	<b>16.78%</b>

*Sources: Appendix 1*

The following figure presents the current ratios of NABIL, SCBNL and EBL during the study period.

**Figure No. 4.1**  
**Current Ratio**



The above chart and table show the current ratios of NABIL, SCBNL and EBL comparatively. The ratio has been ranged from 1.099 to 1.35 of NABIL in 2003/04 and 2007/08. The ratio of NABIL increased constantly up to 2004/05 and then decreased in one year and again increasing during the study period. But the ratio of SCBNL and EBL are fluctuated trend till the last year during the study period.

Measuring the current ratio of all three commercial banks on an average, all seems to meet its standard level (i.e. 2:1) but somehow SCBNL do not seem to be able to meet the standard (i.e. 1). But in year 2007/08 it was able to meet the standard. The current ratio of EBL is highest i.e. 1.84 and followed by SCBNL and NABIL i.e. 1.24 and 1.16 respectively. This implies low level of liquidity ratio. But conventional measure of liquidity is not applicable in banking business. Banking business holds big portion of deposits as a core deposits (the minimum level of deposits which the commercial banks hold at all the times) and deposits remain all the time through out the year. This core deposits forms the fixed liabilities of the bank though it is current in nature.

Where as measuring the total risk, EBL bank has the higher risk factor than the other banks. In one sense the chance of risk fluctuation is higher with EBL bank where as NABIL and SCBNL has lower chance of facing risk. From the C.V analysis also NABIL seems more consistence than SCBNL and EBL.

## **ii. Cash and Bank Balance to Current Assets Ratio**

Cash and bank balance is said to be the first line of defense of every bank. This ratio shows the bank's liquidity capacity in the basis of cash and bank balance that is the most liquid assets. High ratio indicates the bank's ability to meet the daily cash requirements of their customer deposits and vice versa. But the high ratio is not preferred, as the bank has to pay more interest in deposit and will increase the cost of fund. Lower ratio is also very dangerous as the bank may not be able to

make the payment against the cheques presented by the customers. Therefore, bank has to balance the cash and bank balance to current assets ratio in such a manner that it should have the adequate cash for the customer's demand against deposit when required, and less interest is required to be paid against the cash deposit. We have,

$$\text{Cash \& Bank Balance to Current Assets Ratio} = \frac{\text{Cash \& Bank Balance}}{\text{Current Assets}}$$

Cash and bank balance to current assets ratios of NABIL SCBNL and EBL during the study period are presented in table below.

**Table No. 4.2**  
**Cash and Bank Balance to Current Assets Ratio**

<b>Banks</b>	<b>2003/04</b>	<b>2004/05</b>	<b>2005/06</b>	<b>2006/07</b>	<b>2007/08</b>	<b>Mean</b>	<b>S.D</b>	<b>C.V</b>
<b>NABIL</b>	6.81	3.74	3.07	6.06	13.27	<b>6.59</b>	<b>5.05</b>	<b>76.60%</b>
<b>SCBNL</b>	10.76	5.53	5.94	9.18	8.71	<b>8.02</b>	<b>2.88</b>	<b>35.95%</b>
<b>EBL</b>	8.70	9.08	10.25	11.40	10.77	<b>10.04</b>	<b>1.04</b>	<b>10.32%</b>

*Sources: Appendix 1*

#### **Investment to Government Security to Current Assets Ratio**

Above table and figure show that NABIL bank and EBL have invested their fund in government securities in fluctuating trend. The ratio has ranged from 12.69 of NABIL in year 2006 to 40.22 of SCBNL in year 2006. SCBNL leads all the years with grossly

$$\text{Loan \& Advances to Current Assets Ratio} = \frac{\text{Total Loan \& Advances}}{\text{Current Assets}}$$

Loan & advances to current ratios of NABIL SCBNL and EBL during the study period are presented in table.

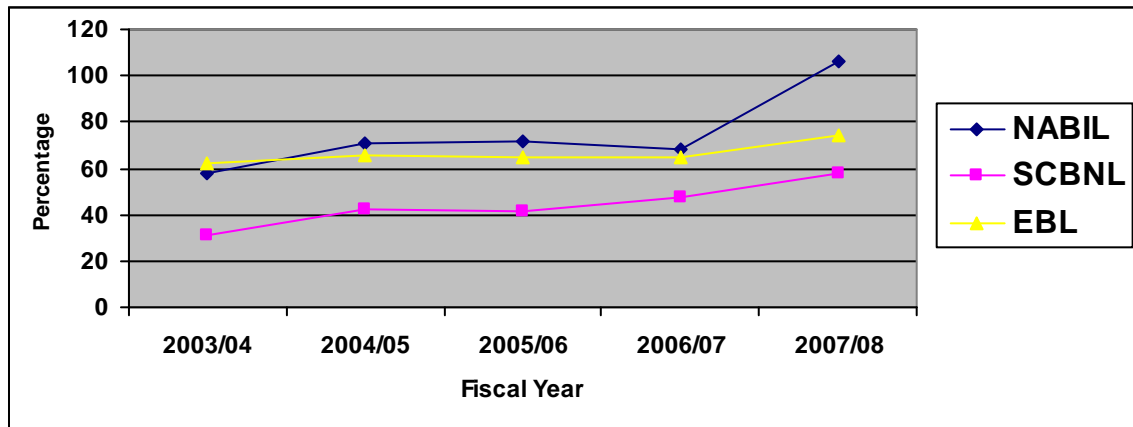
**Table No. 4.6**  
**Loan & Advances to Current Ratio**

<b>BANKS</b>	<b>2003/04</b>	<b>2004/05</b>	<b>2005/06</b>	<b>2006/07</b>	<b>2007/08</b>	<b>Mean</b>	<b>S.D</b>	<b>C.V</b>
<b>NABIL</b>	57.50	70.71	71.26	68.11	106.18	<b>74.75</b>	<b>16.85</b>	<b>22.54%</b>
<b>SCBNL</b>	31.40	42.14	41.61	47.68	58.25	<b>44.22</b>	<b>9.15</b>	<b>20.68%</b>
<b>EBL</b>	62.46	65.85	64.70	65.12	74.06	<b>66.44</b>	<b>4.34</b>	<b>6.53%</b>

*Sources: Appendix 1*

The figure below shows the loan and advances to current assets ratios of NABIL, SCBNL and EBL during the study period.

**Figure No. 4.6**  
**Loan and Advances to Current Assets Ratio**



According to the above table and figure, we can see the ratio of loan and advances to current assets of NABIL, SCBNL and EBL with comparative base. All three banks have invested on loan and advances in the fluctuating trend during the period under study. NABIL bank has the best performance in year 2007/08 i.e. 106.18. SCBNL's performance in maintaining high degree of loans and advances ratio is poorer than other two banks in the study period. It can be suppose that SCBNL is shifting its business to other fee based activities.

Measuring the ratio on an average, of current or short-term deposit in the total deposit. It can be calculated by dividing the amount of fixed deposit by the amount of total deposit. We have,

$$\text{Fixed Deposit to Total Deposit Ratio} = \frac{\text{Fixed Deposit}}{\text{Total Deposit}}$$

Fixed deposit to total deposit ratios of NABIL SCBNL and EBL during the study period are presented in table.

**Table No. 4.7**  
**Fixed Deposit to Total Deposit Ratio**

BANKS	2003/04	2004/05	2005/06	2006/07	2007/08	Mean	S.D	C.V
-------	---------	---------	---------	---------	---------	------	-----	-----

again in 2007/08.

Measuring the ratio on an average, EBL hold higher mean ratio than other i.e. 31.64 and followed by NABIL with 19.65 and SCBNL 9.48. Due to high interest rate banks are uninterested to hold fixed deposit. In case of C.V analysis EBL bank has higher consistency than other banks while NABIL has less consistency.

### iii. Saving Deposit to Total Deposit Ratio

Saving deposit is deposited by public in a bank with an explicit objective of increasing their wealth. So

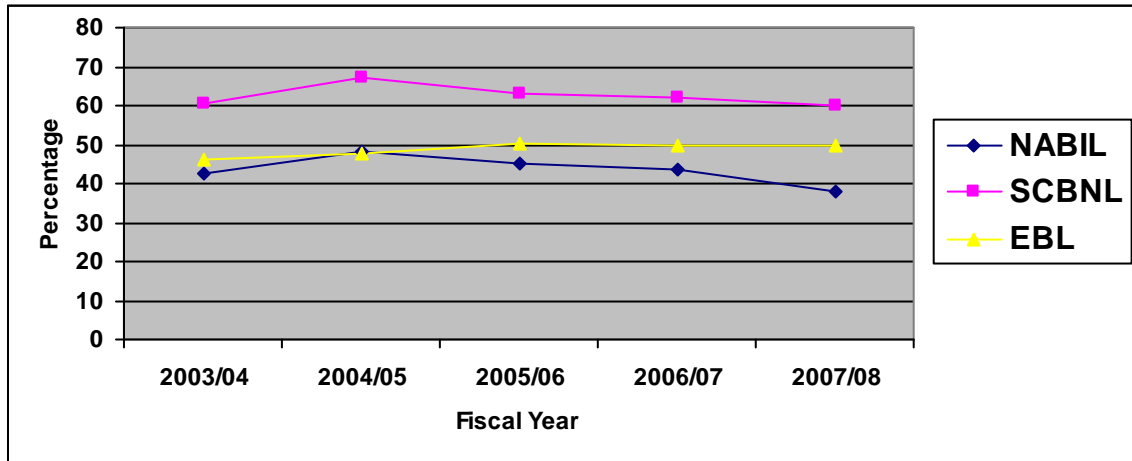
**Table No. 4.8**  
**Saving Deposit to Total Deposit Ratio**

BANKS	2003/04	2004/05	2005/06	2006/07	2007/08	Mean	S.D	C.V
NABIL	42.45	48.17	45.33	43.64	38.10	<b>43.54</b>	<b>3.78</b>	<b>8.68%</b>
SCBNL	60.35	67.40	63.30	61.85	60.03	<b>62.59</b>	<b>2.77</b>	<b>4.43%</b>
EBL	46.26	47.60	50.20	49.65	49.56	<b>48.65</b>	<b>2.14</b>	<b>4.40%</b>

*Sources: Appendix 1*

The figure below shows the saving deposit to total deposit ratios of NABIL, SCBNL and EBL during the study period

**Figure No. 4.8**  
**Saving Deposit to Total Deposit Ratio**



Above table and figure show the saving deposit to total deposit ratio NABIL, SCBNL and EBL comparatively. In the study period, the ratio has ranged from 38.10 of NABIL in year 2007/08 to 67.40 of SCBNL in year 2004/05. NABIL bank and SCBNL have fluctuating trend of saving deposits while EBL have increasing trend. Measuring saving deposit to total deposit on an average, SCBNL bank has high proportion of saving deposit i.e. 62.59. Therefore the proportion of fixed deposit was less comparing other banks. The ratio of SCBNL bank has remarkably increased in year 2004/05. Increased in SCBNL has caused by decreased fixed deposit and call margin. Since the saving deposit is the short term obligation, it means the liquidity of SCBNL is higher than other bank. The CV of NABIL is 8.68% which is higher than the C.V of SCBNL and EBL i.e. 4.43% and 4.40% respectively. It means NABIL is less consistency than other two commercial banks.

#### **iv. Cash & Bank Balance To Total Deposit Ratio**

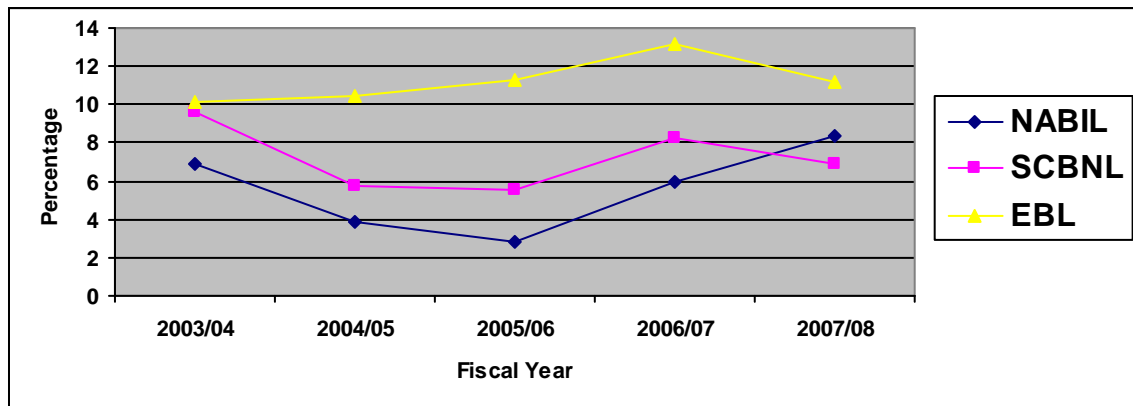
This ratio employed to measure whether cash and bank balance is sufficient to cover its current deposit, saving deposit and call margin. It is calculated by dividing cash and bank by total deposits as

$$\text{Cash and Bank Balance to Total Deposit Ratio} = \frac{\text{Cash \& Bank Balance}}{\text{Total Deposits}}$$

In this study, cash and bank balance includes cash on hand foreign cash in hand, cheques and other cash items, balance with domestic bank and balance held abroad. The total deposits include current deposits, saving deposits, fixed deposits, money at call and short notice and other deposits.

It is hidden fact that the depositors would not withdraw the total deposits at a time so a certain margin of cash is kept by

**o Total Deposit Ratio**



Above table and diagram show the cash and bank balance to total deposit ratio of NABIL, SCBNL and EBL comparatively. EBL has the highest ratio in all the year i.e. up to 2008. It shows the capacity of the bank to meet unanticipated calls on total deposit. The ratio of SCBNL has decreased significantly in year 2004/05 i.e. 5.75 which shows the bank efficiency to manage and utilize its assets into cash does not seem to be efficient.

Measuring the ratio on an average, EBL has highest ratio i.e. 11.22 followed by NABIL i.e. 8.40 and SCBNL i.e. 6.89. While measuring the risk, NABIL has the

higher risk factor than other banks. In one sense the chance of risk fluctuation is higher with NABIL whereas EBL has lower chance of risk. Therefore, among these bank it has high-degree of surviving capacity in the adverse liquidity position.

**v. Investment on Government Securities to Total Deposit Ratio**

This ratio shows the proportion of investment on government securities on total deposit. The government securities are safest place to make investment for bank. But government securities are not so much liquid as cash and bank balance.

$$\text{Investment of Government Securities to Total Deposit Ratio} = \frac{\text{Investment on Government Securities}}{\text{Total Deposit}}$$

Investment on government securities to total deposit ratios of NABIL SCBNL and EBL during the study period are presented in table.

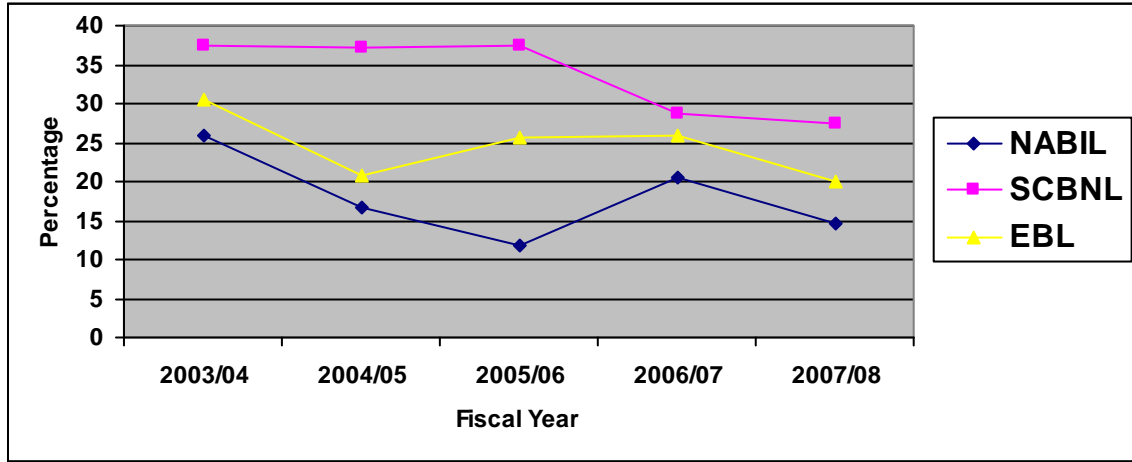
**Table No. 4.10**  
**Investment on Government Securities to Total Deposit Ratio**

<b>BANKS</b>	<b>2003/04</b>	<b>2004/05</b>	<b>2005/06</b>	<b>2006/07</b>	<b>2007/08</b>	<b>Mean</b>	<b>S.D</b>	<b>C.V</b>
<b>NABIL</b>	26.01	16.55	11.90	20.60	14.56	<b>17.92</b>	<b>7.79</b>	<b>43.47%</b>
<b>SCBNL</b>	37.56	37.25	37.49	28.84	27.36	<b>33.70</b>	<b>5.96</b>	<b>17.69%</b>
<b>EBL</b>	30.59	20.80	25.71	25.87	20.11	<b>24.62</b>	<b>3.98</b>	<b>16.17%</b>

*Sources: Appendix 1*

The following figure shows the investment on government securities to total deposit ratios of NABIL, SCBNL and EBL during the study period.

**Figure No. 4.10**  
**Investment on Government Securities to Total Deposit Ratio**



able to mobilize their deposit on investment in various securities. A high ratio indicates the success in mobilizing deposit in securities and vice versa. We have,

$$\text{Total Investment to Total Deposit Ratio} = \frac{\text{Total Investment}}{\text{Total Deposit}}$$

Total investment to total deposit ratios of NABIL SCBNL and EBL during the study period are presented in table below.

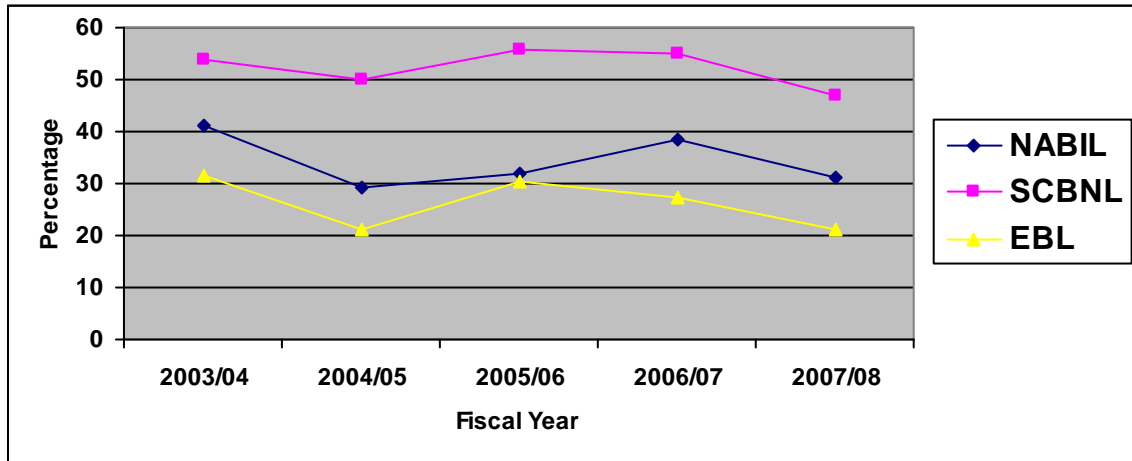
**Table No. 4.11**  
**Total Investment to Total Deposit Ratio**

<b>BANKS</b>	<b>2003/04</b>	<b>2004/05</b>	<b>2005/06</b>	<b>2006/07</b>	<b>2007/08</b>	<b>Mean</b>	<b>S.D</b>	<b>C.V</b>
<b>NABIL</b>	41.33	29.27	31.93	38.32	31.14	<b>34.40</b>	<b>5.23</b>	<b>15.20%</b>
<b>SCBNL</b>	53.68	50.18	55.71	55.10	46.75	<b>52.28</b>	<b>4.80</b>	<b>9.18%</b>
<b>EBL</b>	31.44	21.08	30.43	27.41	21.10	<b>26.29</b>	<b>6.08</b>	<b>23.13%</b>

*Sources: Appendix 1*

The figure below shows the total investment to total deposit ratios of NABIL, SCBNL and EBL from the year ended 2002/2003 to 2006/2007

**Figure No. 4.11**  
**Total Investment to Total Deposit Ratio**



Above table and chart show the total investment to total deposit ratio of NABIL, SCBNL and EBL comparatively. From the above it can be concluded that all the banks have fluctuating trend of ratio under the study period. In the study of mean ratio, NABIL and EBL are not as much success as SCBNL in deposit mobilization. The mean ratio of NABIL and EBL i.e. 31.14 and 21.10 respectively is less than SCBNL i.e. 46.75.

On the basis of CV analysis SCBNL seems higher consistency than other bank. It has lower chance of risk fluctuation. It can be concluded that NABIL and EBL are not successful in mobilizing of its collected deposit in investment than SCBNL

**i. Loans and Advances to Total Deposits Ratio**

Loan and advances is the major area of fund mobilization of commercial banks. Loans and advances is the first type of application of funds, which is more risky as compare to other type of investment. This ratio measures the bank's ability to utilize the depositor's funds to earn profit by providing loan and advances. This ratio is compute by dividing loan and advances by total deposits. We have,

$$\text{Loan \& Advances to Total Deposit Ratio} = \frac{\text{Total Loan and Advances}}{\text{Total Deposit}}$$

### **Loan and Advances to Total Deposit Ratio**

Above table and figure show loan and advances to total deposit ratio of NABIL, SCBNL and EBL comparatively. EBL has the highest ratio comparing up to 2008 year. SCBNL has the lowest ratio throughout five years period. The ratio of NABIL seems to be in fluctuated trend. The increase has made due to the increase in loan and advances in the particular period.

Measuring the ratio on an average, the overall performance of SCBNL seems the best with mean ratio of 46.12 under five year study period. EBL and NABIL have the mean ratio of 76.49 and 66.94 respectively. On the basis of C.V analysis, NABIL seems to be more consistency than other two banks.

#### **ii. Loan and Advances to Saving 4**

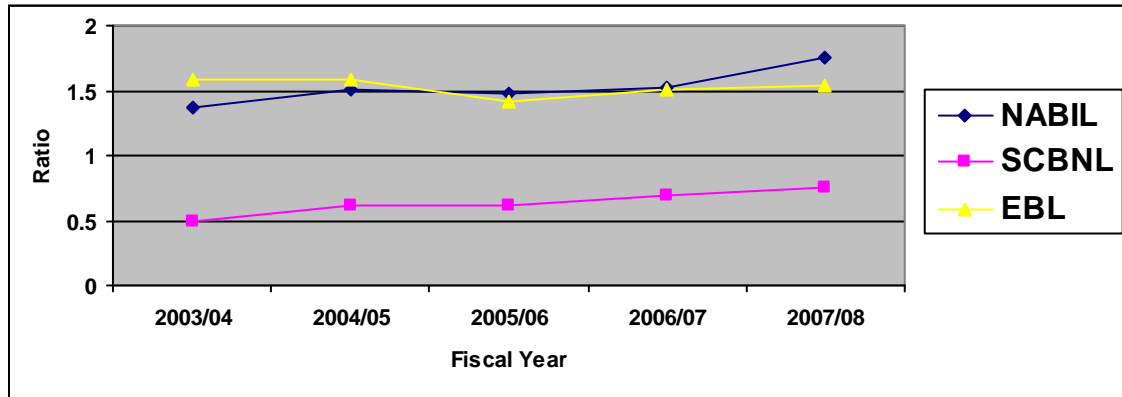
##### **Ratio**

<b>BANKS</b>	<b>2003/04</b>	<b>2004/05</b>	<b>2005/06</b>	<b>2006/07</b>	<b>2007/08</b>	<b>Mean</b>	<b>S.D</b>	<b>C.V</b>
<b>NABIL</b>	1.37	1.51	1.47	1.53	1.75	<b>1.53</b>	<b>0.14</b>	<b>9.15%</b>
<b>SCBNL</b>	0.50	0.62	0.61	0.69	0.76	<b>0.64</b>	<b>0.09</b>	<b>14.06%</b>
<b>EBL</b>	1.58	1.58	1.41	1.51	1.54	<b>1.52</b>	<b>0.12</b>	<b>7.89%</b>

*Sources: Appendix 1*

The figure below shows the loan and advances to total deposit ratios of NABIL, SCBNL and EBL during the study period.

**Figure No 4.13**  
**Loan and Advances to Saving Deposit Ratio**



Above table shows the loans and advances to saving deposit ratio of NABIL, SCBNL and EBL comparatively. In the study period NABIL has 1.75 highest ratio and 1.37 lowest ratio in year 2008 and 2004 respectively. Similarly, SCBNL and EBL have highest ratio 0.69 and 1.58 in year 2007 and 2003, 2004 and have lowest ratio 0.50 and 1.41 in year 2004 and 2006 respectively. The ratio of NABIL is in increasing trend but SCBNL and EBL are in fluctuated trend. The lack of reliable investment opportunity and fear of losing the principle may cause decrease in loan and advances.

Measuring the average ratio, EBL and NABIL has invested more part of saving deposit in loan and advances i.e. 1.52 and 1.53 respectively than SCBNL i.e. 0.64. On the basis of C.V analysis, NABIL seems more consistency than other.

### **4.1.3 Profitability Ratio**

#### **i. Interest Income to Interest Expenses Ratio**

The ratio of interest income to interest expenses measures the gap between interest rates offered and interest rate charged. Since NRB has restricted the gap between the interest offered and interest charged, in average, should not be more than 5%, the difference in this ratio is mainly caused by the ratio of fund mobilized and

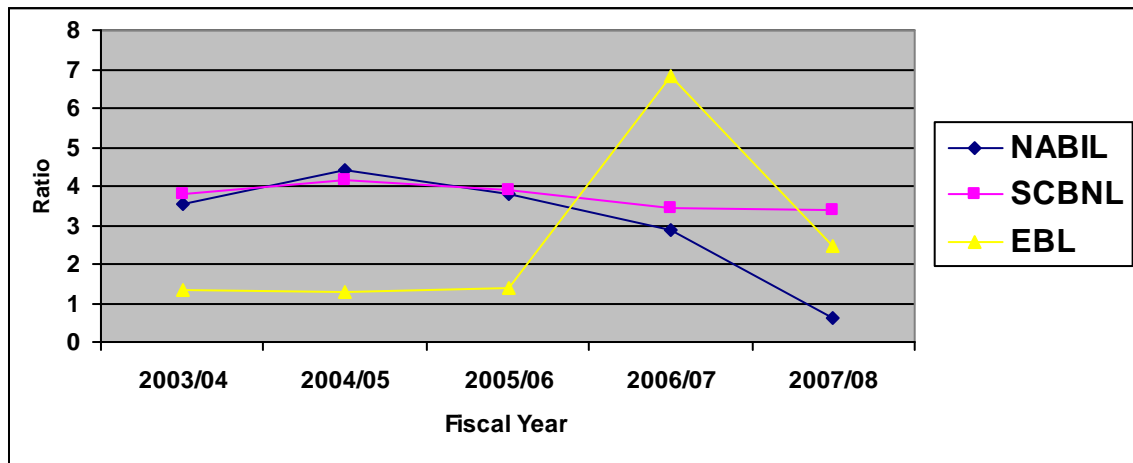
fund collected. The credit creation power of commercial banks has high impact on this ratio. We have,

$$\text{Total Interest Earned to Interest Expenses} = \frac{\text{Total Interest Earned}}{\text{Interest Expenses}}$$

Interest income to interest expenses ratios of NABIL SCBNL and EBL during the study period are presented in table below.

**Table No. 4.14**  
**Interest Income to Interest Expenses Ratio**

<b>BANKS</b>	<b>2003/04</b>	<b>2004/05</b>	<b>2005/06</b>	<b>2006/07</b>	<b>2007/08</b>	<b>Mean</b>	<b>S.D</b>	<b>C.V</b>
<b>NABIL</b>	3.54	4.39	3.77	2.86	0.61	<b>3.10</b>	<b>1.50</b>	<b>48.39%</b>
<b>SCBNL</b>	3.78	4.17	3.92	3.42	3.37	<b>3.60</b>	<b>0050</b>	<b>13.89%</b>
<b>EBL</b>	1.34	1.28	1.39	6.84	2.45	<b>2.63</b>	<b>2.48</b>	<b>94.30%</b>



Above ratio indicates NABIL and SCBNL have high degree of gap between interest offered and interest charged. NABIL and SCBNL are charging high interest to the borrowers and offering low interest rate to the depositors. The increased volume of fixed deposits and high interest rate paid there on has caused NABIL ratio to fall in year 2003 i.e. 3.21. Than after NABIL has increasing trend of fixed deposit till 2005 and then decreased up to last year during the study period. The highest cost of deposits and low volume of non-interest bearing

deposits in the deposit of EBL has caused the gap between interest income and interest expenses to be the least.

In average study, SCBNL has highest ratio i.e. 3.60 followed by NABIL and EBL i.e. 3.10 and 2.63 respectively. On the basis of C.V analysis, SCBNL seems more consistency than other and EBL has less consistency.

## ii. Net Profit to Loan and Advances

Net profit to Loan and advances reflects extend to which the banks are successful in mobilizing the loan and advances to acquire profit. This ratio reveals the profit generating capacity of commercial banks through loan and advances. Higher ratio is preferable. We have,

$$\text{Return on Loan \& Advances Ratio} = \frac{\text{Net Profit or Loss}}{\text{Total Loan \& Advances}}$$

Net profits to loan and advances ratios of NABIL SCBNL and EBL during the study period are presented in table below.

**Table No. 4.15**  
**Net Profit to Loan and Advances**

<b>BANKS</b>	<b>2003/04</b>	<b>2004/05</b>	<b>2005/06</b>	<b>2006/07</b>	<b>2007/08</b>	<b>Mean</b>	<b>S.D</b>	<b>C.V</b>
<b>NABIL</b>	5.56	4.90	4.92	4.33	3.49	<b>4.34</b>	<b>0.75</b>	<b>17.28%</b>
<b>SCBNL</b>	8.41	6.62	7.37	6.6	5.97	<b>6.51</b>	<b>1.00</b>	<b>15.36%</b>
<b>EBL</b>	2.44	2.21	2.42	2.17	2.46	<b>2.34</b>	<b>0.15</b>	<b>6.41%</b>

*Sources: Appendix I*

The following figure shows the net profit to loan and advances ratios of NABIL, SCBNL and EBL

vely. NABIL bank has fluctuating trend in this ratio. SCBNL has also decreasing trend but the highest ratio than other two banks throughout the study period while EBL has the lowest ratio.

The performance of SCBNL seems the best with mean ratio of 6.51. This implies that SCBNL is successful to acquire profit through loan and advances than other

two banks. NABIL and EBL have the mean ratio of 4.34 and 2.34 respectively. On the basis of C.V analysis EBL seems more consistency in its performance.

**iii. Net Profit to Total Assets (Return on Assets)**

This ratio is useful in measuring

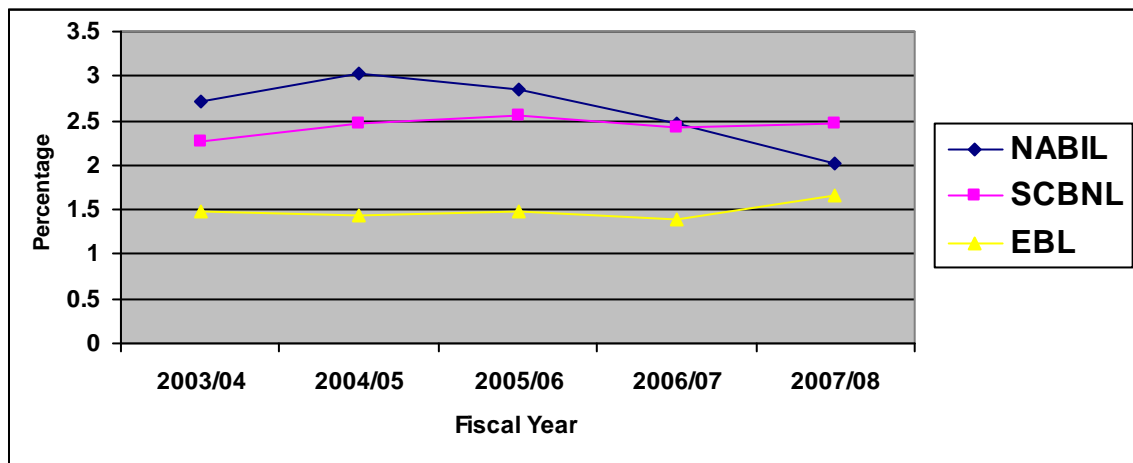
**Table No. 4.16**  
**Net Profit to Total Assets**

<b>BANKS</b>	<b>2003/04</b>	<b>2004/05</b>	<b>2005/06</b>	<b>2006/07</b>	<b>2007/08</b>	<b>Mean</b>	<b>S.D</b>	<b>C.V</b>
<b>NABIL</b>	2.72	3.02	2.84	2.47	2.01	<b>2.61</b>	<b>0.42</b>	<b>16.09%</b>
<b>SCBNL</b>	2.27	2.46	2.55	2.42	2.46	<b>2.43</b>	<b>0.15</b>	<b>6.17%</b>
<b>EBL</b>	1.49	1.43	1.49	1.38	1.66	<b>1.49</b>	<b>0.09</b>	<b>6.04%</b>

*Sources: Appendix 1*

The following figure shows the net profit to total assets ratios of NABIL, SCBNL and EBL during the study period

**Figure No. 4.16**  
**Net Profit to Total Assets Ratio**



The above table and figure show the net profit earned to total assets ratio of NABIL, SCBNL, and EBL comparatively. The ratio has been ranged form 1.38 of EBL in 2007 to 3.02 of NABIL in year 2005. The ratio of NABIL is in increasing trend. It implies that the bank is successful in generating the profit by investing the

firm's resource. EBL has the lowest ratio throughout the study period among three banks. It shows the capacity of utilization of the financial resources is very low to generate the profit.

Measuring the average ratio, the mean ratio of NABIL is 2.61 and is the highest ratio. SCBNL and EBL have 2.43 and 1.49 respectively. This ratio shows the NABIL's best performance. According to C.V analysis, EBL seems to be more consistency i.e. 6.04% than NABIL and SCBNL i.e. 16.09% and 6.17% respectively.

#### iv. Net Profit to Total Deposit Ratio

Net Profit to total deposit ratio reflects the extent to which the banks are success to mobilize deposit to earn profit. Higher ratio is preferable. We have,

$$\text{Net Profit to Total Deposit} = \frac{\text{Net Profit}}{\text{Total Deposit}}$$

Net profit to total deposit ratios of NABIL SCBNL and EBL during the study period are presented in table below.

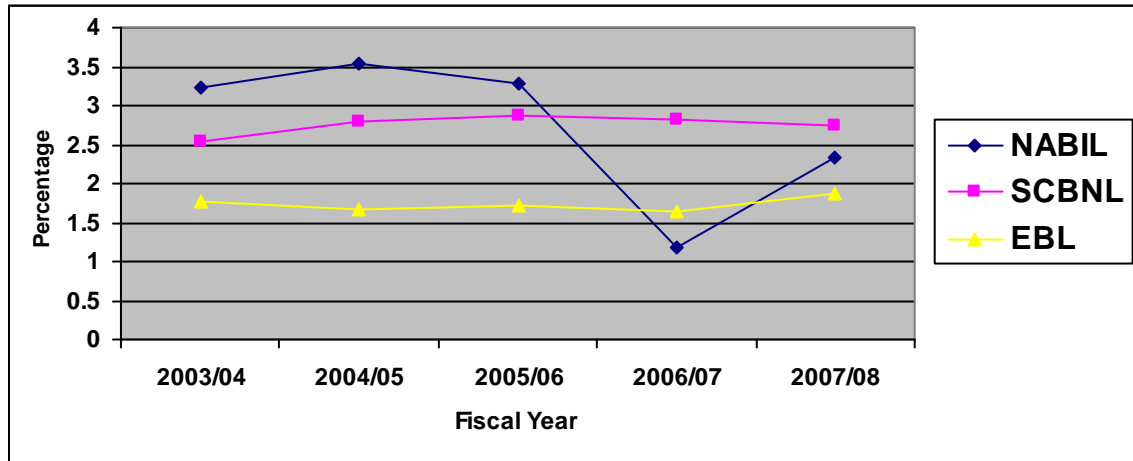
**Table No. 4.17**  
**Net Profit to Total Deposit Ratio**

<b>Banks</b>	<b>2003/04</b>	<b>2004/05</b>	<b>2005/06</b>	<b>2006/07</b>	<b>2007/08</b>	<b>Mean</b>	<b>S.D</b>	<b>C.V</b>
<b>NABIL</b>	3.22	3.55	3.28	1.17	2.34	<b>2.71</b>	<b>1.04</b>	<b>38.38%</b>
<b>SCBNL</b>	2.54	2.79	2.86	2.81	2.75	<b>2.75</b>	<b>0.16</b>	<b>5.82%</b>
<b>EBL</b>	1.78	1.67	1.72	1.63	1.88	<b>1.74</b>	<b>0.09</b>	<b>5.17%</b>

*Sources: Appendix 1*

The following figure shows the net profit to total deposit ratios of NABIL, SCBNL and EBL during the study period.

**Figure No. 4.17**  
**Net Profit to Total Deposit Ratio**



The above table shows the net profit to total deposit ratio of NABIL, SCBNL and EBL comparatively. From this table it can be concluded NABIL, SCBNL and EBL have fluctuating trend of ratio. Under the study period, NABIL has highest ratio 3.55 in year 2005 and lowest ratio 1.17 in year 2007. Similarly, SCBNL and EBL have highest ratio 2.86 and 1.88 in year 2006 and 2008 and have lowest ratio 2.54 and 1.63 in year 2004 and 2007 respectively.

Measuring the average, SCBNL has the  
ome the future contingencies and meet fixed internal obligations of the banks.

Here we must distinguished liquidity form profitability. Profitability is a measure of operating performance whereas liquidity is a measure of financial condition. It is possible for an enterprise to be profitable and yet unable to pay its current obligations.

**Table No. 4.18**  
**Total Liquidity and Profitability/Losses to Total Deposit**

Banks		Fiscal Year				
		2003/04	2004/05	2005/06	2006/07	2007/08
NABIL	Liquidity	13.38	9.79	12.22	8.41	5.93

	Profitability	3.22	3.55	3.28	1.17	2.34
<b>SCBNL</b>	Liquidity	20.04	17.43	14.11	15.35	11.98
	Profitability	2.54	2.79	2.86	2.81	2.75
<b>EBL</b>	Liquidity	10.16	16.04	11.74	13.15	6.33
	Profitability	1.78	1.67	1.72	1.63	1.88

The table presented above shows percentage of liquidity and profitability to total deposit of commercial banks. Banks need liquidity to meet its various financial obligations and for its day to day operation also. Having right amount of liquidity at the right time and at the right place is very essential for the banks.

Observing the profitability side of the banks, there is some differences in the profitability position. The above table shows the profitability position of commercial banks over the period of five years starting from fiscal year 2004 to 2008.

The figures suggest us that SCBNL is the most liquid bank among these three banks. It has maintained relatively the high amount of liquidity throughout the study period. It has 20.04%, 17.43%, 14.11%, 15.35% and 11.98% in the fiscal year 2004, 2005, 2006, 2007 and 2008 respectively. The profit of SCBNL has not shown consistency. It has remarkable decrease in year 2004.

From the profitability point of view, NABIL bank has been earning a consistent level of profit throughout the study period. It has earned 3.22%, 3.55%, 3.28%, 1.17% and 2.34% in the fiscal year 2004, 2005, 2006, 2007 and 2008 respectively.

EBL is the average liquid bank among these three banks. It has maintained relatively the high amount of liquidity throughout the study period. It has 10.16%, 16.04%, 11.74%, 13.15% and 6.33% in the fiscal year 2004, 2005, 2006, 2007 and

2008 respectively. The profit of EBL has not shown consistency. It has remarkable fluctuated trend till the last year during study period.

Either excess or less holding of liquidity, both will hamper the smooth operation of the banks. So, utmost care should be given while holding liquidity by the commercial banks.

posits and liquid fund to net profit.

#### 4.3.1 Correlation Coefficient between Total Deposit to Loan and Advances

Deposit and loan and NABIL	<b>0.9553</b>	<b>0.9126</b>	<b>0.0264</b>	<b>0.1584</b>	Significant
<b>SCBNL</b>	<b>0.8877</b>	<b>0.7880</b>	<b>0.0640</b>	<b>0.3840</b>	Significant
<b>EBL</b>	<b>0.9461</b>	<b>0.8951</b>	<b>0.0316</b>	<b>0.1896</b>	Significant

*Sources: Appendix 2*

In the case of NABIL, it is found that the coefficient of correlation between deposit and loan and advances is 0.9553. It shows there is high degree of correlation between these two variables. The coefficient of determination ( $r^2$ ) is 0.9126 which depicts that the dependent variable i.e. loan and advances is explained by the independent variable i.e. deposit by 91.26%. Similarly probable error (P.E.) of this bank is 0.0264 It is used to find out the significance of the obtain value. Here, since  $r > P.E.$ , the value of 'r'  $> 6 P.E.$  It shows that the 'r' is definitely significant.

In case of SCNBL, it is found that the coefficient of correlation between total deposit and loan and advances is 0.8877. It shows positive relationship between two variables. The coefficient of determination ( $r^2$ ) is 0.7880 which shows that the dependent variable i.e. loan and advances is explained by the independent variables i.e. total deposit about 78.80%. Since  $r > P.E. > 6 P.E.$ , the value of r is definitely significant.

Similarly, in case of EBL, the value of coefficient of correlation between deposit and loan and advances is 0.9461 which shows that positive relationship between these variables. The coefficient of determination ( $r^2$ ) 0.8951, it means the coefficient of variable i.e. loan and advances is explained by the independent variable i.e. deposit about 89.51%. Since  $r > P.E. > 6 P.E.$ , the value of  $r$  is definitely significant.

In conclusion of the calculation we can say that there is a positive relationship between deposit and loan and advances of all the banks. If deposit is increases loan and advances will definitely increase. The relationship between the variables of all the banks are significant and the value of ( $r^2$ ) shows high percent of dependent variable which has been explained by independent variable. This indicates that the banks are successful in mobilizing the deposits in proper way for loan and advances. Moreover we can conclude that NABIL has the highest correlation between these variables and SCBNL has the least. This means NABIL has better mobilized its collected deposit.

#### **4.3.2 Correlation Coefficient between Current Assets and Loan and Advance**

Correlation coefficient between current assets and loan and advances measures the degree of relationship between these two variables. Here current assets are independent variable ( $x$ ) and loan and an advance is dependent variable ( $y$ ). The objective behind the calculation of this correlation is to find out whether current assets is significantly mobilized as loan and advances.

The table shows the ' $r$ ', ' $r^2$ ', probable error (P.E.) and 6 P.E. Between the current assets and loan and advances during the study period.

**Table No 4.20**  
**Correlation Coefficient between Current Assets and Loan and Advance**

<b>Banks</b>	<b>(r)</b>	<b>(r<sup>2</sup>)</b>	<b>P.E.</b>	<b>6 P.E.</b>	<b>Remarks</b>
<b>NABIL</b>	<b>0.7496</b>	<b>0.5619</b>	<b>0.1321</b>	<b>0.7926</b>	Insignificant
<b>SCBNL</b>	<b>0.8708</b>	<b>0.7583</b>	<b>0.0729</b>	<b>0.4374</b>	Significant
<b>EBL</b>	<b>0.9328</b>	<b>0.8701</b>	<b>0.0392</b>	<b>0.2352</b>	Significant

*Sources: Appendix 2*

In case of NABIL, the coefficient of correlation between current assets and loan and advances is 0.7496 which means there is high degree of correlation between these variables. The coefficient of determination ( $r^2$ ) is 0.5619 which depicts that the dependent variable loan and advances is explained by the independent variable current assets about 56.19%. Similarly, the probable error (P.E.) and 6 P.E. are 0.1321 and 0.7926 respectively. Since  $r > P.E.$  But,  $r < 6 P.E.$  it means that the 'r' is definitely insignificant In conclusion we can say that there is negative relationship between current assets & loan and advances of NABIL bank. If the total current assets decreases, loan and advances will definitely increased.

In case of SCBNL and EBL, the correlation coefficient is 0.8708 and 0.9328 respectively and both have also positive value. It shows the positive relationship between current assets and loan and advances. The coefficient of determinants ( $r^2$ ) of SCNBL is 0.7583 and EBL is 0.8701. It shows that the relationship between loan and advances of SCNBL is explained by current assets 75.83%, where as in case of EBL current assets explain 87.01% of the loan and advances. The probable error of SCNBL and EBL are 0.0729 and 0.0392 respectively. The value of 'r' is greater than probable error. This means the coefficient of correlation is significant for both banks.

In conclusion of calculation we can say that there is positive relationship between current assets and loan and advances of SCBNL and EBL. But, negative relationship between current assets and loan & advances of NABIL. If current assets increases, loan and advance will be definitely increase SCBNL and EBL, but vice versa with NABIL. The value of  $r^2$  shows high percent in dependent

variable. Moreover, we can say that EBL has the highest correlation between these variables.

### 4.3.3 Correlation Coefficient between Deposit and Net Profit

Deposit is mobilized to earn profit. Coefficient of correlation between deposit and net profit measures the relationship between deposit and net profit measures the relationship between these two variables (y). The purpose of computing coefficient of correlation between deposit and net profit is significantly correlated with respective deposit or not.

The table shows the value of 'r' and 'r<sup>2</sup>', Probable Error (P.E.) and 6 P.E. between deposit and net profit for the study period.

**Table No 4.21**  
**Correlation Coefficient between Deposit and Net Profit**

<b>Banks</b>	<b>(r)</b>	<b>(r<sup>2</sup>)</b>	<b>P.E.</b>	<b>6 P.E.</b>	<b>Remarks</b>
<b>NABIL</b>	<b>0.3343</b>	<b>0.1118</b>	<b>0.2679</b>	<b>1.6075</b>	Insignificant
<b>SCBNL</b>	<b>0.9609</b>	<b>0.9234</b>	<b>0.0231</b>	<b>0.1386</b>	Significant
<b>EBL</b>	<b>0.9547</b>	<b>0.9114</b>	<b>0.0267</b>	<b>0.16041604</b>	Significant

*Sources: Appendix 2*

In case of NABIL, the coefficient of correlation between deposit and net profit is - 0.3343 which means that there is low degree of correlation between these variables. The Coefficient of determination of NABIL is 0.1118 which depict that the dependent variable net profit is explained by independent variable deposit about 11.18%. Similarly, the Probable error (P.E.) and 6 P.E. are 0.2679 and 1.6075 respectively. Hence  $r < 6PE$ , the value of 'r' is insignificant.

In case of SCBNL, the correlation coefficient is 0.9609 which means the relation between deposit and net profit is highly positive. The coefficient of determinates is 0.9234, it shows that the relationship between net profit is explained by deposit is 92.34%. Hence  $r > P.E. > 6 P.E.$ , therefore the result is defiantly significant.

Similarly, in case of EBL, the correlation coefficient between deposit and net profit is 0.9547 which means there is high degree of relationship between these variables. The Coefficient of determination is 0.9114, it shows that relationship between net profit is explained by deposit is 91.14%. Since the value of 'r' is greater than P.E. and 6 P.E., this means the value of 'r' is definitely significant.

In conclusion of calculation we can say that there is low degree of relationship between deposit and net profit of NABIL banks. There is positive relationship between deposit and net profit of SCBNL and EBL banks. If total deposit increases, net profit will be definitely increased. The value of  $r^2$  shows high percent in dependent variable. Moreover, we can say that EBL has the highest correlation between these variables.

#### **4.3.4 Correlation Coefficient between Liquid Fund and Net Profit**

Correlation coefficient between liquidity and profitability measures the degree of relationship these variables. Here Liquid fund is independent variable (x) and net profit is dependent variable (y). It shows whether the net profit is significantly correlated with liquid fund or not.

The table shows the 'r', ' $r^2$ ', probable error (P.E.) and 6 P.E. between the liquid fund and net profit during the study period.

**Table No 4.22**  
**Correlation Coefficient between Liquid Fund and Net Profit**

<b>Banks</b>	<b>(r)</b>	<b>(r<sup>2</sup>)</b>	<b>P.E.</b>	<b>6 P.E.</b>	<b>Remarks</b>
<b>NABIL</b>	<b>0.0710</b>	<b>0.0050</b>	<b>0.3001</b>	<b>1.8006</b>	Insignificant
<b>SCBNL</b>	<b>-0.1674</b>	<b>0.0280</b>	<b>0.2932</b>	<b>1.7592</b>	Insignificant
<b>EBL</b>	<b>0.3614</b>	<b>0.1306</b>	<b>0.2622</b>	<b>1.5732</b>	Insignificant

*Sources: Appendix 2*

In case of NABIL, it is found that the coefficient of correlation between liquid fund and net profit is 0.0710. It shows low positive relationship between these two variables. The coefficient of determination ( $r^2$ ) is 0.0050 which depicts the dependent variable i.e. net profit is explained by the independent variable i.e. liquid fund by 5.00%. Similarly probable error (P.E.) of this bank is 0.3001. Here, since  $r < P.E.$ , the value of ' $r$ '  $< 6 P.E.$  It shows that the ' $r$ ' is definitely insignificant.

In case of SCNBL, it is found that the coefficient of correlation between liquid fund and net profit is -0.1674. It shows negative relationship between two variables. The coefficient of determination ( $r^2$ ) is 0.0280 which shows that the dependent variable i.e. net profit is explained by the independent variables i.e. liquid fund only about 2.80%. Since  $r < 6 P.E.$ , the value of  $r$  is definitely insignificant.

Similarly, in case of EBL, the value of coefficient of correlation between deposit and loan and advances is 0.3614 which shows there is very low degree of relation between these variables. The coefficient of determination ( $r^2$ ) is 0.1306; it means the coefficient of variable i.e. net profit is explained by the independent variable i.e. liquid fund about 13.06%. Since  $r < 6P.E.$ , the value of  $r$  is definitely insignificant.

In conclusion of the calculation we can say that there is a positive relationship between liquid fund and net profit of NABIL & EBL has negative relationship between Liquidity Fund and Net Profit. But EBL has given importance to the liquidity factor. That is why it has highly positive correlation and the value of 'r' which is also high. If liquid fund increases net profit will also increase. Here the number of observations that we have considered is small so that might be the case of this result also. And we can see better results in the future when the number of observations will rise.

#### **4.4 TREND ANALYSIS**

Under this topic, analysis trend of deposit collection, its utilization and net profit of NABIL, SCBNL and EBL are studied. To utilize deposits a commercial bank may grant loan and advances and invest government securities and share & debentures of other companies. Under this topic an attempt is made to analyze trend of deposit, Investment and income of NABIL, SCBNL and EBL and also forecast their trend for next five years. The projections are based on the following assumptions:

- a. The main assumption is that other things will remain unchanged.
- b. The forecast will be true only when the limitation of least square method is carries out.
- c. The bank will run in present position.
- d. The economy will remain in the present stage.
- e. Nepal Rastra Bank will not change its guidelines to commercial bank.

##### **4.4.1 Trend Analysis of Total Deposit**

Deposit is one of the very sensitive liabilities of commercial banks. Its trend and behaviors are determined by various seasonal and cyclical factors. The following table describes the trend values of total deposit of NABIL, SCBNL, and EBL

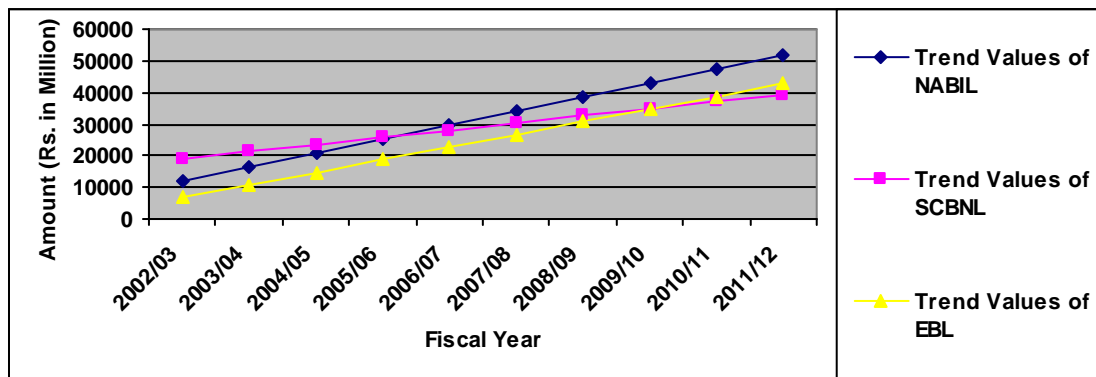
**Table No 4.23**  
**Trend Values of Deposits**

(Rs. in million)

Fiscal Year	Trend Values of NABIL	Trend Values of SCBNL	Trend Values of EBL
2002/03	11792.53	19094.32	6842.64
2003/04	16227.30	21342.02	10833.98
2004/05	20662.07	23589.72	14825.32
2005/06	25096.84	25837.42	18816.66
2006/07	29531.61	28085.12	22808
2007/08	33966.38	30332.82	26799.34
2008/09	38401.15	32580.52	30790.68
2009/10	42835.92	34828.22	34782.02
2010/11	47270.69	37075.92	38773.36
2011/12	51705.46	39323.62	42764.70

*Sources: Appendix 3*

**Figure No. 4.18**  
**Trend Value of Total Deposit**



The above chart and table show the trend behaviors of total deposits in NABIL, SCBNL and EBL has the increasing trend. From the first year of trend, SCBNL line poses the highest area among the three banks during the whole study period. If other thing remains the same, the total deposit of NABIL will be 51705.46 million in FY 2011/12 which is highest deposit among the three banks. Similarly deposit of SCBNL & EBL will be 39323.62 million and 42764.70 million for the FY 2011/12 respectively.

Hence to sum up, the slope of NABIL represents a high degree of increase than that of other two bank and able to maintain high growth rate in collecting deposits.

#### 4.4.2 Trend Analysis of Total Investment

A commercial bank mobilizes its deposit by investing its fund in different sectors. The following table describes the trend values of investment of NABIL, SCBNL, and EBL.

mid July 2012. That is the highest investment among three banks. Similarly, the investment of NABIL & EBL will be 16052.15 million and 8438.20 million respectively.

From the above trend analysis, it is found that the total investment of SCBNL is higher in compared to NABIL & EBL. The calculated trend values of total investment of NABIL, SCBNL and EBL are fitted in the trend line.

#### 4.4.3 Trend Analysis of Net Profit

Under this topic, the trend values of net profit for five years from mid July 2002/03 to 2006/07 have been calculated and forecasted fro next five years from mid July 2006/07 to 2011/12.

The following table shows the trend values of net profit for ten yeas from mid July 2002/03 to 2011/12 of NABIL, SCBNL and EBL.

**Table No 4.25**  
**Trend Values of Net Profit**

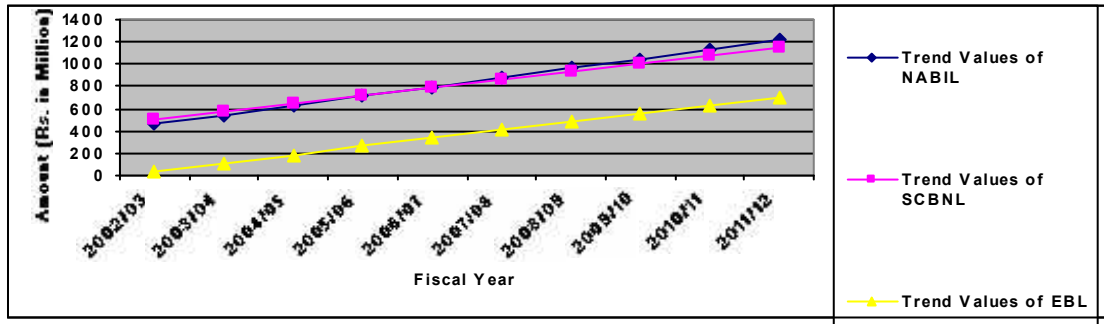
**(Rs. in million)**

<b>Fiscal Years</b>	<b>Trend Values of NABIL</b>	<b>Trend Values of SCBNL</b>	<b>Trend Values of EBL</b>
<b>2002/03</b>	458.27	506.33	40.25
<b>2003/04</b>	542.07	577.80	114.35
<b>2004/05</b>	625.87	649.27	188.45
<b>2005/06</b>	709.67	720.74	262.55
<b>2006/07</b>	793.47	792.21	336.65
<b>2007/08</b>	877.27	863.68	410.75
<b>2008/09</b>	961.07	935.15	484.85
<b>2009/10</b>	1044.87	1006.62	558.95
<b>2010/11</b>	1128.67	1078.09	633.05
<b>2011/12</b>	1212.47	1149.56	707.15

*Sources: Appendix 3*

**Figure No.4.20**

### Trend Value of Net Profit



The above table shows that the net profit of NABIL, SCBNL & EBL is in increasing trend. Other things remaining the same, the net profit of NABIL will be 1212.47 million in the mid July 2012. That is the highest among the three during the study period. Similarly, the net profit of EBL will be 707.15 million and SCBNL will be 1149.56 million in mid 2012.

From the above trend analysis, it is found that the net profit of NABIL is the highest among three sample banks. The calculated trend values of net profit of NABIL, SCBNL and EBL are fitted in the trend line.

### 4.5 MAJOR FINDINGS OF THE STUDY

The following points present a comprehensive summary to the main findings of the study:

#### Liquidity Ratio

- ◆ The measurement of liquidity has revealed that all the banks are capable in discharging their current liability by current assets. EBL is maintaining high current ratio than NABIL and SCBNL. Comparatively low volume of current liability and high volume of current assets in assets and liability mix of EBL has resulted high current ratio. NABIL has also high consistency than other banks

that there is a high degree of variation in the performance of NABIL. Since the variance has caused due to the fluctuating trend of every components. The performance of NABIL is developing in most of the cases.

### **Turnover / Utilization Ratio**

- ◆ Total investment to total deposit ratio has measured the proportion of total deposit that is used to increase the income of the banks in total deposit. SCNBL has deployed the highest proportion of its total deposit in earning activities and this ratio is significantly above than the ratio of other two banks. NABIL and EBL performance in investing activities has not increased proportionately as compare to total deposit increment. These two banks are not as much as successful in mobilizing the deposits into the investing activities.
- ◆ Loan and advances to total deposits ratio has measured the proportion of total deposit that is used to generate income of the banks as loans and advances. EBL has deployed the highest proportion of its total deposits as loan and advances followed by NABIL and SCNBL. This indicates that in fund mobilizing activities, EBL is significantly better than SCNBL and NABIL. Their loan and advances has not increased proportionately as compare to the deposits.
- ◆ The Loan and advances to saving deposits ratio of NABIL is in increasing trend but SCBNL and EBL are in fluctuated trend. The lack of reliable investment opportunity and fear of losing the principle may cause decrease in loan and advances. The average ratio, NABIL and EBL has invested more part of saving deposit in loan and advances i.e. 1.53 and 1.52 respectively then SCBNL i.e. 0.64. On the basis of C.V analysis, EBL seems more consistency than other.

## **Profitability Ratio**

- ◆ The gap between NABIL and SCBNL in respect of interest income and interest expenses is highly deviated. The one rupee of interest expenses has been able to earn 3.60 in SCBNL. This ratio have resulted the reciprocal result as measured by loan & advances to the total deposit and total investment to total deposit ratio. If the mobilization of fund has caused impact on this ratio, the result would be the same as that demonstrated by the above ratios. The high volume of money at call has helped SCBNL to increase its interest income which is not measured by above ratios. Interest expenses has resulted this ratio to be the reciprocal of earlier. SCBNL being the superpower in the technology and modern banking has succeeded in collecting the fund in the cheapest price.
- ◆ Net profit to loan and advances ratio reflects the extend to which the banks are successful in mobilizing the fund to acquire income. The mean ratio among the banks has highly deviated. The performance of SCNBL is significantly better and successful in acquiring profit through loan and advances than other two banks. It has the highest ratio. The performance of NABIL is moderate. EBL shows significantly lower return against loan and advances as it has the lowest ratio among these banks.
- ◆ Return on assets ratio is useful in measuring the profitability of financial resource invested in the firm's assets. NABIL bank has the highest ratio followed by SCNBL and EBL. NABIL and SCNBL have satisfactorily level of performance in mobilizing the firm's resources. They have not highly deviated ratio. But EBL has remarkable low ratio. Net Profit to total deposit ratio reflects the deposit utilization capacity of banks to earn profit. All banks have fluctuating trend of ratio. Due to the past condition, banks withdrew their investment form various sectors. However in year 2007, SCNBL and NABIL bank has decreased trend in ratio. EBL has the lowest ratio among the banks

In the profitability ratio, the performance of SCNBL is significantly better than other two banks. SCNBL has succeeded to utilize its resources in better way. NABIL bank has moderate performance. EBL has very poor performance. It has not succeeded to utilize its collected fund to generate the income.

### **Coefficient of Correlation Analysis**

Co-efficient of correlation analysis between different variables of NABIL, SCBNL and EBL, it reveals that:

- ◆ The correlation chapter has shown generally high degree of significant correlation between all the variables measured except in the case of liquid fund to net profit. The correlations between deposit and loan & advances and current assets & loan and advances have high degree of positive correlation. This concludes that a unit of increment in total deposit and current assets are most likely to increase the volume of loan and advances. As far as the net profit and its correlation with total deposit, SCBNL has very high degree of positive correlation. But it seems that SCBNL has given importance to the profit factor. That is why it has highly positive correlation and the value of 'r' is also highly significant. If deposit fund increases net profit will also increase.
- ◆ NABIL, the coefficient of correlation between current assets and loan and advances is 0.7496 which means there is positive of correlation between these variables. In case of SCBNL and EBL, the correlation coefficient is 0.8708 and 0.9328 respectively and both have also positive value. It shows the positive relationship between current assets and loan and advances. The value of 'r' is greater than probable error. But, NABIL's r is less than 6PE. This means the coefficient of correlation is significant for SCBNL & EBL and insignificant for NABIL. There is positive relationship between current assets and loan and advances of all banks. If current assets increase, loan and advance will be definitely increased. The value of  $r^2$  shows high percent in dependent variable.

Moreover, we can say that EBL has the highest correlation between these variables.

- ◆ NABIL, the coefficient of correlation between deposit and net profit is low degree of positive correlation between these variables. Hence  $r < 6PE$ , the value of 'r' is insignificant. This reveals that though 'r' is positive, incensement of deposit may or may not increase profit. In case of SCBNL, the correlation coefficient is highly positive. EBL, the correlation coefficient between deposit and net profit high degree of relationship between these variables. Hence  $r > P.E. > 6 P.E.$ , therefore the result is defiantly significant. We can say that there is low degree of positive relationship between deposit and net profit of NABIL. If total deposit increases, net profit will be slightly increased and there is positive relationship between deposit and net profit of SCBNL and EBL banks. If total deposit increases, net profit will be definitely increased. The value of  $r^2$  shows high percent in dependent variable. Moreover, we can say that SCBNL has the highest correlation between these variables.
- ◆ We can say that there is a low degree of positive relationship between liquid fund and net profit of EBL and NABIL. But SCBNL has negative relationship between liquid fund and net profit. But EBL has given importance to the liquidity factor. That is why it has highly positive correlation and the value of 'r' is also highest than others. But all banks are insignificant. If liquid fund increases net profit will also slightly increases of EBL and NABIL. Here the number of observations that we have considered is small so that might be the case of this result also. And we can see better results in the future when the number of observations will rise. But in case of SCBNL it has negative correlation between liquid fund and net profit, it means if liquid fund increase, net profit will decreases.

### **Trend Analysis and Projection for Next Five Years**

The trend analysis of total deposit, total investment and net profit and projection for next five years of NABIL, SCBNL and EBL reveals that:

- ◆ Total deposits of all the three banks have increasing trend. If other thing remains the same, the total deposit of NABIL will be 51705.46 million in FY 2011/12 which is highest deposit among the three banks. Similarly deposit of SCBNL & EBL will be 39323.62 million and 42764.70 million for the FY 2011/12 respectively. The slope of SCBNL represents a high degree of increase than that of other two bank and able to maintain high growth rate in collecting deposits.
- ◆ NABIL, SCBNL and EBL of the total investment are in increasing trend, other things remaining the same the total investment of SCBNL will be 17248.88 million in the mid July 2012. That is the highest deposit among three banks. NABIL & EBL will be 16052.15 million and 8438.20 million respectively. The total investment of SCBNL is higher in compared to NABIL & EBL.
- ◆ The net profit of NABIL, SCBNL & EBL is in increasing trend. Other things remaining the same, the net profit of NABIL will be 1212.47 million in the mid July 2012. That is the highest among the three during the study period. Similarly, the net profit of EBL will be 707.15 million and SCBNL will be 1149.56 million in mid 2012. The net profit of NABIL is the highest among three sample banks. The calculated trend values of net profit of NABIL, SCBNL and EBL are fitted in the trend line.

## **CHAPTER - V**

### **SUMMARY, CONCLUSION AND RECOMMENDATIONS**

The present study has been designed to overcome the issues relating to liquidity management in Nepalese commercial banks. It was aimed to find out comparative liquidity management analysis in NABIL Bank, Standard Chartered Bank and Everest Bank. It tries to know whether or not commercial banks able to maintain adequate liquid assets. The study gives emphasis in finding out liquidity position by various financial analyses as required. The prime components of liquidity management is the financial condition in terms of profitability, efficiency in deposit mobilization and the management quality in terms of liquidity management, designed for study to meet the objectives. Present study successfully explored the financial condition and the performance of the selected banks in term of the liquidity management.

#### **5.1 SUMMARY**

Present study is very successful to meet the stated objectives designed for the study. The researcher highlights or introduces the meaning and importance of research paper and meets the objectives followed by various sequential steps.

The first chapter of the study dealt about basic assumption of the study. Basically it highlights the concept and importance or significance of the study. It also presents research issues, research problems, basic objectives of the study, rationality of the study, limitation of the study, process of the study and introduction of the study. Lastly, it discusses about the organizational structure of the study.

The second chapter helped the researcher to provide knowledge about the development and progress made by the earlier researcher on the concerned field or topic of the study. It helped to know the research work undertaken by them. It also tried to know some concept used in this study. Moreover, it summarized the finding of the previous

showed that the overall liquidity strength of SCBNL can be considered the best among the banks. However, the liquidity risk arising from interest rate in SCBNL is the most likely. Since the market is highly sensitive towards the interest rate and SCBNL has been generally offering low interest rate as compared to other banks. If SCBNL cannot tie up its saving deposits holder certainty increase the capability of these banks in increasing their credit but if the economy did not take the upward trend and existing violence and political instability continues, the liquidity caused by flow of deposits would cause the great damage in profitability.

The probability in SCBNL is most likely if this bank does not go on looking new areas of lending. The lower liquidity in NABIL and EBL indicate better productivity of their funds than SCBNL. Looking upon the increasing trend of deposit and loan and advances, the performance of EBL seems good in the area of investment and impact on national economy. However, profitability ratio has reflected the poor performance of EBL. Interest income to interest expenses ratio and profitability position are the indicative of SCBNL better performance than other two banks. The better profitability ratio of SCBNL has proved this bank the best in managing the best in liquidity policy according to the demand of profit-oriented business. But overall moderate position in the banking business has put the NABIL in the top position in absolute terms.

The correlations between deposit and loan & advances and current assets & loan and advances have high degree of positive correlation. This concludes that a unit of increment in total deposit and current assets are most likely to increase the volume of loan and advances. As far as the net profit and its correlation with total deposit, NABIL has low degree of positive correlation. But it seems that NABIL has not given importance to the liquidity factor. That is why it has low degree of positive correlation and the value of 'r' is also insignificant. If liquid fund increases net profit will also increase but nominally.

Total deposits of all the three banks have increasing trend. The deposit collection of NABIL is higher than SCBNL and EBL. The total investment of three banks has increasing trend. It is found that the total investment of SCBNL is higher in compared to NABIL & EBL. The net profit of NABIL, SCBNL & EBL is in increasing trend. It is found that the net profit of SCBNL is the highest among three sample banks.

### **5.3 RECOMMENDATIONS**

This can be a valuable piece of research works in liquidity management topic. It explored the existing situation and identified the various components for further improvement in the study of liquidity management. Secondary sources of information are used for fulfilling the objectives. It may be useful for academicians, parishioners, especially to bank management and/or any others who are directly or indirectly involved in banking activities. Based on the findings of the study, the researcher recommended highlighting the guidelines to put forward for further improvement.

- ◆ The proportion of high interest bearing deposit in deposit mix of EBL is very high and this has result the highest interest expenses. Fixed deposit is high interest bearing 77

- ◆ more percentage of deposit can be invested to different profitable sectors. Because, analysis shows that investment is a significant factor which affects the net profit of the bank. Subsequently, a skillful administration is the must because negligence may become a reason of principle loss.
- ◆ As examined by interest income to interest expenses ratio, the interest gap in SCBNL and NABIL is highly unfavorable for the nation development. Since this gap is not existed due to the c

## **BIBLIOGRAPHY**

### **Books :**

Bajracharaya, B.C (2053), **Business Statistic and Mathematics**, 1<sup>st</sup> Edition,  
Kathmandu : MK Publisher and Distributors.

Bhandari, Dilli Raj. (2056), **Banking and Insurance Management**, 1<sup>st</sup> Edition,  
Kathmandu: Aayush Publication.

Brigham, Gapenski, Eharhadt, (2001), **Financial Management Theory and Practice**, 9<sup>th</sup> Edition, New Delhi: Harcourt Asia (P) Ltd.

Chandra, P. (1995), **The Investment Game**, Tata McGraw-Hill India.

Crosse, H.D. (1963), **Management Policies for Commercial Banks**, New Jersey:  
Prentice Hall Inc.

Dahal Bhutan & Sarita, (2002), **A Hand Book of Banking**, 2<sup>nd</sup> Edition,  
Kathmandu : Asmita Books & Stationary.

Dangol, RatnaMan. (1995), **Financial Management (Theory and Practice)**, 3<sup>rd</sup>  
Edition. Kathmandu: Taleju Prakashan.

Decay, Manning (1989), **Banking Theory and Practice**, 4<sup>th</sup> Edition (revised),  
New Delhi : Vikash Publishing House Pvt. Ltd.

Fama, Eugene Fredaric, **The Behavior of Stock Market Price**, Journal of  
Business, 1972.

Gupta S.C. (2000), **Fundamentals of Statistics**, 5<sup>th</sup> Edition (reprint), Kathmandu:  
Himalayan Publishing House.

Hampton, John J. (2000), **Financial Decision Making**, 4<sup>th</sup> Edition. New Delhi: Prentice-Hall of India (P) Ltd.

Johnson & Johnson. (1940), **Commercial Bank Management**, New York: The Dryden Press.

Khan & Jain. (1985), **Financial Management Texts and Problems**, 2<sup>nd</sup> Edition, New Delhi: Tae McGraw-Hill, Publishing Co. Ltd.

Lawrence J Gitman. (1988), **Principles of Managerial Finance**, 5th Edition, New York: Harper and Raw publishers.

Munakarmi, Shiva Prashad, **Management Accounting**, 2<sup>nd</sup> Edition, Kathmandu: Buddha Academic Publishers & Distributor Pvt.

Radhaswamy & Vasudevan, (1994), **Financial Accounting- A managerial Perspective**, 1<sup>st</sup> Edition, New Delhi : Prentice hall of India (P) Ltd.

Pandey, I.M. (1985), **Financial Management**, 8<sup>th</sup> Edition, New Delhi: Vikas Publishing House (P) Ltd.

Pradhan, Surendra, (1992), **Basic of Financial Management**, Kathmandu: Education Enterprise (P). Ltd.

Sayers R.S. (1976), **Modern Banking**, 7<sup>th</sup> Edition, New Delhi: India Oxford Clarendon Press.

Shekhar and Shekhar, (1998), **Banking Theory and Practice**, 18<sup>th</sup> Edition (revised), New Delhi : Vikash Publishing House Pvt. Ltd.

Vaidya Shakespeare, **Banking and Insurance Management**, 1<sup>st</sup> Edition, Kathmandu : Taleju Prakashan, Bhotahity.

Vaish M.C. (1985), **Money Banking and International Trade**, 5 Edition, Jaipur, India: RBSA Publishers.

Van Horn, James. C (1997), **Financial Management & Policy**, 12<sup>th</sup> Edition, New Delhi : Prentice Hall India (P) Ltd.

Vickers, Douglas, (1985), **Money Banking and Macro Economy**, New Jersey: Prentice Hall Inc.

Weston J. Fred & Copeland Thomas E. (1995), **Managerial Finance**, 9<sup>th</sup> revised Edition, Harcourt viii, Barce Jovanovich College Publisher.

Wolf, Howard K. and Pant P.R. (2002), **Social Science Research and Thesis Writing**, 2<sup>nd</sup> Edition, Kathmandu: Buddha Academic Enterprises Pvt. Ltd.

### **Articles, Journals & Reports :**

Amihud and Mendelson (1988), **“Liquidity and Assets Prices; Management Implication”**, New Business Age.

Chopara, S. (1989), **Role of Foreign Banks in Nepal, Nepal Rastra Bank Samachar**, Kathmandu: Nepal Rastra Bank

**Everest Bank Limited, Annual Reports (2003/04 – 2007/08).**

**IMF, Excess Liquidity & Monetary Overhangs. (1985)**

Khatri, Sudhir. (2005), **One Umbrella Act’s Pros and Cons. New Business Age.**

**NABIL Bank Ltd, Annual Reports (2003/04 – 2007/08).**

**Nepal Rastra Bank, Banking and Financial Statistics, Mid-Jan 2007, Kathmandu.**

**Nepal Rastra Bank, Economic Report, 2007/08, Kathmandu.**

Poudel, D.P. (1997), **Financial Companies in Nepal-An Overview**, Bankers Training Center. NRB, Kathmandu.

**Standard Chartered Bank of Nepal Ltd, Annual Reports (2003/04 – 2007/08).**

Subedi, Kamal, (2002), **Growth in Major Commercial Banks, New Business Age.**

**Thesis :**

Joshi, Nirmala. (1982), **Evaluation of Financial Performance of the Commercial Banks**, An Unpublished Master's Thesis, Submitted to Shanker Dev Campus, T.U., Kathmandu.

Joshi, Keshav Raj, (1989), **A Study on Financial Performance of Commercial Banks**, An Unpublished Master's Thesis, Submitted to Shanker Dev Campus, T.U., Kathmandu.

Thapa, Joyti. (1998), **Investment Policy of Commercial Banks**, An unpublished Master's Thesis, Submitted to T.U., Kritipur.

Karki, Pralad, (2001), **An Analysis of Deposit Mobilization of Rastriya Banijay Bank**. An Unpublished Master's Thesis, Submitted to Shanker Dev Campus, T.U., Kathmandu.

Dangol, Neeraj. (2002), **Liquidity, Profitability and Stock Market in Nepal (with Special Reference to Commercial Banks of Nepal**, An Unpublished Master's Thesis, Submitted to Shanker Dev Campus, T.U., Kathmandu.

Poudel, Kishor, (2002), **Liquidity Investment Practice of Joint Venture Bank in Nepal (with special reference to Everest Bank & Nabil Bank)**. An Unpublished Master's Thesis T.U., Kritipur.

Subedi, Narayan Prasad (2002), **A comparative study of financial performance between Himalayan Bank Ltd and Everest Bank Ltd**, An Unpublished Master's Thesis, Submitted to Shanker Dev Campus, T.U., Kathmandu.

Shrestha, Dependra. (2002), **Investment Practices of Joint Venture Banks in Nepal with Special Reference to Nepal Arab Bank, SCBNL and Nepal SBI Bank**, An Unpublished Master's Thesis, Submitted to Nepal Commerce Campus, T.U., Kathmandu.

Sen, Sudhir. (2004), **A Study on Liquidity Management of Financial Companies**, An Unpublished Master's Thesis, Submitted to People's Campus, Kathmandu.

Shrestha, Kiran. (2004), **Liquidity Position of Finance Companies in Nepal**, An Unpublished Master's Thesis, Submitted to Shanker Dev Campus, T.U., Kathmandu.

Bhandari, Dinesh, (2005), **"Liquidity Mobilization Practice of Joint Venture Banks in Nepal"**, An Unpublished Master's Thesis, Submitted to T.U., Kritipur.