

WOMEN'S DECISION MAKING POWER IN GORKHA DISTRICT

A Dissertation

Submitted to the Central Department of Population Studies,

Faculty of Humanities and Social Sciences of

Tribhuvan University in Partial Fulfillment of

the Requirements for the Degree of

Master of Arts

in

Population Studies

By

Hari Kumari Subedi

Tribhuvan University

Kirtipur, Kathmandu, Nepal

December 2008

Tribhuvan University
Faculty of Humanities and Social Sciences
Central Department of Population Studies
Kirtipur, Kathmandu
Nepal

LETTER OF RECOMMENDATION

This is to certify that Mrs. Hari Kumari Subedi has completed the dissertation entitled "*Women's Decision Making Power in Gorkha District*" under my guidance and supervision. I, therefore recommend the Dissertation Committee for the evaluation of this dissertation.

December 2008

.....
Dr. Pushpa Kamal Subedi
(Supervisor)
Central Department of
Population Studies (CDPS)
Tribhuvan University
Kirtipur, Kathmandu

APPROVAL-SHEET

This dissertation entitled "*Women's Decision Making Power in Gorkha District*" by Hari Kumari Subedi has been accepted as partial fulfillment of the requirements for the Master's Degree of Arts in Population Studies.

.....
Dr. Bal Kumar K.C.
(Professor and Head of CDPS)

.....
Sharada Pathak
(External Examiner)

.....
Dr. Pushpa Kamal Subedi
(Supervisor)

Dissertation Committee

ACKNOWLEDGEMENTS

This study has been done for the partial fulfillment of the requirements for the degree of Master's in Population Studies. I would like to express my sincere gratitude to Dr. Bal Kumar K.C., professor and Head of Central Department of Population Studies for the acceptance of this dissertation.

I am very indebted to my supervisor Dr. Pushpa Kamal Subedi for his valuable suggestions, guidelines, co-operation, and encouragement to prepare this dissertation, despite his busy time schedule. Similarly, I would like to express my gratitude to external examiner Sharada Pathak for her kind co-operation, suggestion and guidance to prepare this dissertation.

I would like to express my gratitude to CDPS's teachers and staffs for their responsible co-operation. Similarly, I would like to express thank a lot to all the respondents who respond to the entire questionnaires curiously and participated interestingly in my research work. I respect to their opinions willingness and also thankful to Mr. Megha Nath Dahal, the secretary of Dhawa VDC, Gorkha District because whose help is played a grate role to completion this dissertation.

Likewise, I would like to express my sincere thanks to my family members for the given opportunity to study in Master's Degree. In the same way, I would like especial thanks to my husband Arjun Prasad Pokharel for his immense help, suggestions and cooperation on various phases of this dissertation during the preparation period.

I wish to express thank a lot to all friends for their assistance and encouragement to prepare this dissertation in various phases during the preparation period.

December 2008

**Hari Kumari Subedi
Dhawa-7, Gorkha**

ABSTRACT

This study examines women's involvement in decision-making on the household activities at Dhawa VDC in Gorkha district. The analysis has been done on the basis of data generated from the household survey, questionnaire, key informant interview techniques and group discussion as well as from secondary data, which are used under the descriptive and explanatory method. Demographic and socio-economic indicators are used to measure the decision making level in household. There is a small comparison between Brahmin/Chhetri and Dalit women in the household decision making level. We find the mixed output among the activities. Illiterate women are more involved in cropping decision, household management and livestock farming than literate women where as literate women decide the method of family planning. Education is not only the determinant to improve the decision making level. Mostly low socio economic status directly link to low decision-making power. However, there are some issues to be further studied between literate and illiterate women. This study summarizes that their involvement seems in most activities of the household but they don't have purchasing power. It means that they do not have controlling decision over the resources. Literate and illiterate Dalit respondent participation on social activities is closely related to decision making than Brahmin/Chhetri respondents. This study showed that only education can not change women all over status and their decision-making power, where there are several things are playing the role in our society.

TABLE OF CONTENTS

	Page No.
TITLE PAGE	I
RECOMMENDATION	II
APPROVAL-SHEET	III
ACKNOWLEDGEMENTS	IV
ABSTRACT	V
TABLE OF CONTENTS	VI-IX
LIST OF TABLES	X-XI
LIST OF MAP AND FIGURES	XII
ACRONYMS AND ABBREVIATIONS	XIII
CHAPTER-I: INTRODUCTION	1-13
1.1 Background of the Study	1
1.2 Problem Statement and Research Question	3
1.3 Literature Review	3
1.4 Significance of the Study	11
1.5 Conceptual Framework for the Proposed Study	12
1.6 Objectives of the Study	13
1.7 Hypothesis of the Study	13
1.8 Organization of the Study	13
CHAPTER-II: DATA AND METHOD	14-18
2.1 Introduction to the Study Area	14
2.2 Introduction to the Study Population	16
2.3 Research Method	16
2.4 Definition of the variables	17
2.5 Types of Study	17
2.6 Determination Sample size	17
2.7 Tools and Techniques for Data Collection	17
2.8 Data Management	18

2.9 Specific Objectives and Methods	18
CHAPTER-III: DATA ANALYSIS RESULTS AND DISCUSSIONS	19-58
3.1 Demographic characteristics	19
3.1.1 Age and Sex Composition of Household Population with Sex Ratio	19
3.1.2 Age Composition of the Respondents by Age	21
3.1.3 Caste Composition of the Respondents	21
3.1.4 Marital Status of the Respondents	22
3.1.5 Age at Marriage of the Respondents	23
3.1.6 Types of Marriage of the Respondents	23
3.1.7 Age at Birth of First Child	24
3.1.8 Current Status of the Respondents	24
3.1.9 Type of Family	25
3.1.10 Marital Status of the Respondents Family	26
3.1.11 Type of Dowry used of the Respondents	26
3.1.12 Age Difference between Respondents and her Husband	27
3.2 Socio-economic Characteristics	28
3.2.1 Education Status of the Respondents Family	28
3.2.2 Education Status of the Respondents	29
3.2.3 Occupational Status of the Respondents	29
3.2.4 Land Distribution	30
3.2.5 Land Owner in their Family	31
3.2.6 Type of Livestock	32
3.2.7 Respondents by Livestock as 'PEWA'	33
3.2.8 Monthly income Level of the Respondents Family	33
3.2.9 Main Sources of Family Income	33
3.2.10 Distribution of the Respondents by Keeping the Household Income	34
3.2.11 Distribution of the Respondents by Money 'PEWA'	35
3.2.12 Roof of House Made	35
3.2.13 Type of Fuel Used for Cooking	36
3.2.14 Participation in Social Activities	36

3.3 Decision-making Power of Women	37
3.3.1 Decision about Marriage	37
3.3.2 Decision on control over Resources on Household	37
3.3.3 Decision Making on Cropping	38
3.3.4 Decision on Buying Food Product	39
3.3.5 Decision on Selling of Surplus Food	39
3.3.6 Decision on Livestock Forming	39
3.3.7 Decision in Household Purchase for Daily Needs	40
3.3.8 Decision on Management of Household	41
3.3.9 Decision for Own Health Care	41
3.3.10 Decision on Participating Social Activities	42
3.3.11 Decision on Family Debt	42
3.3.12 Decision on Formal or Non-formal Education	43
3.4 Miscellaneous Decision Making	43
3.4.1 Decision about Dowry	43
3.4.2 Decision on Using Type of Fuel for Cooking Food	44
3.4.3 Decision on Selection of Family Size	45
3.4.4 Decision on Using of Family Planning Method	45
3.4.5 Decision about Children Education	46
3.5 Decision making on Various HH and Socio-economic Activities by Education	46
3.5.1 Decision on control over Resources on Household by Education	46
3.5.2 Decision Making on Cropping by Education	47
3.5.3 Decision on Buying Food Product by Education	48
3.5.4 Decision on Selling of Surplus Food by Education	49
3.5.5 Decision in Household Purchase for Daily Needs by Education	49
3.5.6 Decision on Livestock Forming by Education	50
3.5.7 Decision on Management of Household by Education	50
3.5.8 Decision on Using Type of Fuel by Education	51
3.5.9 Decision on Using of Family Planning Method by Education	52
3.4.10 Decision about Children Education by Education	53

3.6 Statistical Analysis	53
3.6.1 Decision on control over Resources on Household by Education	53
3.6.2 Decision Making on Cropping by Education	54
3.6.3 Decision on Buying Food Product by Education	54
3.6.4 Decision on Selling of Surplus Food by Education	55
3.6.5 Decision in Household Purchase for Daily Needs by Education	55
3.6.6 Decision on Livestock Forming by Education	56
3.6.7 Decision on Management of Household by Education	56
3.6.8 Decision on Using Type of Fuel by Education	57
3.6.9 Decision on Using of Family Planning Method by Education	57
3.6.10 Decision about Children Education by Education	58
CHAPTER-IV: SUMMARY AND CONCLUSION	60-64
4.1 Summary of Findings	60
4.2 Conclusion	64
REFERENCES CITED	65-66
APPENDICES	67-70

LIST OF TABLES

	Page No.
Table 1: Distribution of Household population by Age and Sex Ratio, 2008	20
Table 2: Distribution of Respondents by Age, 2008	21
Table 3: Distribution of Respondents by Caste, 2008	22
Table 4: Distribution of Respondents by Marital Status, 2008	22
Table 5: Distribution of Respondents by Age at Marriage, 2008	23
Table 6: Distribution of Types of Marriage by Respondents, 2008	24
Table 7: Distribution of Respondents by Age at Birth of First Child, 2008	24
Table 8: Distribution of Respondents by Current Status, 2008	25
Table 9: Distribution of Respondents by Type of Family, 2008	25
Table 10: Distribution of Respondents by Marital Status, 2008	26
Table 11: Distribution of Respondents by Type of Dowry Used, 2008	27
Table 12: Distribution of Age Difference between Respondent and her Husband, 2008	27
Table 13: Distribution of Respondents Family by Education, 2008	28
Table 14: Distribution of Respondents by Education Status, 2008	29
Table 15: Distribution of Respondents by Occupational Status, 2008	30
Table 16: Distributions of Respondents Own Name by Land, 2008	31
Table 17: Distribution of Land Owner by Respondents Family, 2008	31
Table 18: Distribution of Respondents by Type of Livestock, 2008	32
Table 19: Distribution of Respondents by Livestock as 'PEWA', 2008	32
Table 20: Distribution of Respondents Family Monthly income Level, 2008	33
Table 21: Distribution of Respondents Family by Main Sources of Income, 2008	34
Table 22: Distribution of Respondents by Keeping the Household Income, 2008	34
Table 23: Distribution of the Respondents by Money 'PEWA', 2008	35
Table 24: Distribution of Respondents by Making Roof of House, 2008	35
Table 25: Distribution of Respondents by Type of Fuel Used for Cooking, 2008	36
Table 26: Distribution of Respondents by Participation in Social Activities, 2008	36
Table 27: Distribution of Respondents Decision about Marriage, 2008	37
Table 28: Distribution of Respondents Decision on control over Resources on HH, 2008	38
Table 29: Distribution of Respondents by Decision on Cropping, 2008	38
Table 30: Distribution of Respondents by Decision on Buying Food Product, 2008	39
Table 31: Distribution of Respondents by Decision on Selling of Surplus Food, 2008	39

Table 32: Distribution of Respondents by Decision on Livestock Forming, 2008	40
Table 33: Distribution of Res. by Decision in HH Purchase for Daily Needs, 2008	40
Table 34: Distribution of Respondents by Decision on Management of Household, 2008	41
Table 35: Distribution of Respondents by Decision for Own Health Care, 2008	42
Table 36: Distribution of Respondents Decision on Participating Social Activities, 2008	42
Table 37: Distribution of Respondents by Decision on Family Debt, 2008	43
Table 38: Distribution of Res. by Decision on Formal or Non-formal Education, 2008	43
Table 39: Distribution of Respondents by Decision about Dowry, 2008	44
Table 40: Distributions of Respondents by Decision on Using Type of Fuel for Cooking Food, 2008	44
Table 41: Distribution of Respondents by Decision on Selection of Family Size, 2008	45
Table 42: Distribution of Res. by Decision on Using of Family Planning Method, 2008	45
Table 43: Distribution of Respondents by Decision about Children Education, 2008	46
Table 44: Distribution of Respondents by Decision on control over Resources on Household by Education, 2008	47
Table 45: Distribution of Res. by Decision Making on Cropping by Education, 2008	48
Table 46: Distribution of Res. by Decision on Buying Food Product by Education, 2008	48
Table 47: Distribution of Res. by Decision on Selling of Surplus Food by Education, 2008	49
Table 48: Distribution of Respondents by Decision in Household Purchase for Daily Needs by Education, 2008	49
Table 49: Distribution of Respondents by Decision on Livestock Forming by Education, 2008	50
Table 50: Distribution of Respondents by Decision on Management of HH by Education, 2008	51
Table 51: Distribution of Respondents by Decision on Using Type of Fuel by Education, 2008	52
Table 52: Distribution of Respondents by Decision on Using of FP Method by Education, 2008	52
Table 53: Distribution of Respondents by Decision about Children by education, 2008	53
Table 54: Correlation Coefficient	58

LIST OF MAP AND FIGURES

	Page No.
Figure 1: Conceptual Framework	12
Figure 2: Map of Dhawa VDC	15
Figure 3: Population Pyramid	20
Figure 4: Percentage Distributions of Respondents by Type of Family	26
Figure 5: Percentage Distribution of Age Difference between Respondents and her Husband	28
Figure 6: Percentage Distributions of Respondents by Occupational Status	30

ACRONYMS AND ABBREVIATIONS

ADB	Asian Development Bank
BBC	Beyond Beijing Committee
CBS	Central Bureau of Statistics
CDPS	Central Department of Population Studies
CEDA	Central for Economics Development and Administration
CERID	Central for Education Research, Innovation and Development
CREHPA	Central of Research on Environment Health and Population
DHS	Demographic Health Survey
FP	Family Planning
FWLD	Forum of Women Legal and Development
GEM	Gender Empowerment Measure
HH	Household
HMG	His Majesty's Government
INGO	International Non-Government Organization
M.A.	Master of Arts
MOHP	Ministry of Health and Population
NGO	Non- Governmental Organization
NO	Number
NGO	Non-governmental Organization
NPC	Nepal Planning Commission
Res.	Respondents
TU	Tribhuvan University
UNFPA	United Nations Population Fund
VDC	Village Development Committee
WHO	World Health Organization

CHAPTER-I: INTRODUCTION

1.1 Background of the study

Women's equal participation in any development activities is not only desirable but also essential as well as speed up the development process. Women participate half of the population in the world. The problem among the third world countries is not to recognize women as productive potential. Our country is male dominated. Females are considered of low standard and of less value. But in present years state has started realizing the importance of women participation in the economic as well as social development. Women have low socio-economic status as well as low decision-making power. They have to perform three responsibilities as reproductive household work, productive economic activities and community management. They don't control over decision making on their reproduction and economic activities. Many societies have placed women to lowest rank and a submissive role confined to the home, farm and their family responsibilities. Men and women have started participating on equal footing in development activities in many developed countries having faith and relationship as that of "muscles with the nail of the finger" (Acharya, 1987). This mutual understanding male and female can bring drastic changes in the socio- economic status of a nation.

The UN declaration of women decade (1975-1985) had been rendered statistically in visible by development. Women as the traditional producers and managers of the domestic and subsistence sector were highly undermined. Their activities took automatically lube led as "none magnetized" "non-marketable" and "non-productive". Such acute statistical bias reflected in national accounting further fed by staunch traditional norms, values and perceptions could be held responsible for the shift in women's status to "non status. Few women's organization which emerged as an outcome of the political upheavals of the pre 1950's were primarily interest motivated, designed to serve their own circle of families and friend's instead of women at large. Women's organization established in 1960 in Nepal, which directed more towards livelihood activities like knitting, sewing and weaving. Although its interest was not purely in the upliftment of women, its effort to initiate an interest and concern for women and their development cannot go unappreciated. It was only after the UN declaration of 1965 as the international year of women and 1975 to 1985 as the UN decade for women that a national

committee on international women's year was formed in Nepal. This committee allocated considerable foreign funds for seminars and conferences on women's issues headed by women leaders.

The economic, social and demographic factors are found as the most important component which directly or indirectly affect the decision-making process. Women's involvement in the market economy lends them greater power in terms of household decision-making in important matters. This can be attributed to the contribution of women towards the household income. Confinement of women to the domestic and subsistence sector automatically implies a low status conferred to them in terms of decision-making power.

Above view greater confinement of the women in the household implies higher fertility rates. Such a demographic phenomenon further implies low economic participation among these women and consequently a low status attached to them. Again, conventional social norms and beliefs tend to diminish the overall status of women both within and outside the household. The general belief is that women belong to the domestic sector, which releases little time off from their overwhelming workload for any kind of productive economic participation.

According to 2001 census, Nepal had observed women constituted more than fifty percent of the total population. It is found that 42.8 percent of females were literate and in the same time, the male literacy rate was 65.5 percent. The gap is 22.7 percent in literacy between women and men. The illiteracy rate is high especially among rural women. The census report reveals women to be far behind the males in terms of education, employment, in decision-making positions, business, land-ownerships etc. Women still have less control over economic and physical resources and lagging behind in terms of political power. Women have not been changed to the desired extent. Many factors show that least possibilities of decision-making power to women as compared to their male counterpart. Women are thought incapable decision maker. The male perception of women being worthy of only women themselves to come forth as capable members all process of women low status.

Patriarchy describes a distribution of power and resources with in females such that men maintain power and control of resources and women are powerless and depend on men. The control of women by men household members is it self assume to reflect the sexes relative

control of material and social resources. The sex's relatives' control of resources is in turn assumed to reflect extra-familial economic and kinship institutions, especially norms determining the sexual division of labour and the patterns of exchanges associated with marriage and death.

1.2 Problem statement and research question

Men have major role of decision-making and women's role in decision-making is negligible. Generally, women bear the subordinate role. Decision-making measures the relative status of the household members. Some research indicates that women's decision-making process is declining since the last decades in the households. Nepal has a great social and cultural diversity. We cannot generalize the statement with out depth study in the particular area. This type of study is not taken in Dhawa VDC of Gorkha district yet in women's decision making over the household resources. This study examines a degree of linkage between low socio-economic status of women and less access in household decision making in the research site and shows the current situation of Dalit and Brahmin/Chhetri women on decision making in household activities in comparison with the male partners and tries to analyze the reasons why men are involved in decision making.

1.3 Literature Review

This study reviewed past researches, population and related documents. Available literatures deal about decision-making power of women and men. In Nepal, rural area's women play various roles in household management. Women are manages, mothers and wives in community. They maintain social & cultural services but they are dominated economically, if they are unemployed.

Ghimire (1997:49-57) found that the girls' enrollment in primary level, in spite of equal level population was lower than that of boys in study area. The main causes were found poverty and negative attitude of parents towards daughters. So lacks of educational awareness of parents involve the girls in farm and household work. He also found that girls are in decreasing trend of enrollment from primary to secondary level in study area. Though high rate of enrollment were found in primary levels, the proportion of girl's enrollment even at this level was only 38 percent as against 62 percent of the boys.

The rural activities of households are divided in five categories (Strishakti, 19). They are related to decision-making: farm management, domestic expenditure, education of girls, religious and social travel and disposal of household products and capital transaction. In all of these women's contribution to rural household's decision-making process seems to have declined in the last decade. The report does not explain why this is happening. One cause could be increasing commercialization of agriculture, which is changing the pattern of household expenditure and investment. Women know less about new technology and commercial agriculture than men and are, therefore getting marginalized from farm management. Changing pattern of household expenditure in favor of market goods and investment beyond small household industries could also reduce women's input into decision-making process. But all these are only conjectures and can only be explained by the depth research of these processes. Conventional social custom is one of the major reason obstructing women from participation fully in economic development, which results low decision-making power in women's hand. In one hand, higher the participation of women for economic development means higher the decision-making power of women. On the other hand, the social conception that only women are responsible for the reproduction of human beings; conception, delivery and upbringing of child has made it extremely difficult for women to participate in the development process as equal member of society. So, female status is very low compared to the male (Acharya, 1997:19).

According to Shrestha (1994) decision making power of women may increase with in equality of participation at all level of the planning and policy making not as recipient beneficiaries, labour an input contribution and consultants but as active change agent the concerned level. It dose not mean the involvement of one or two women or the wives of the leaders, but the involvement of women and men in the sample proportion in decision-making as their proportion in the communities at large. She further added that the women of Nepal are so dependent to men if the partners of members deny giving shelter to them; it is a question of basic survivals. The system has made women to helpless, houseless and dependent that without men they will not survive.

Decision-making of females especially in the study area at home and farm affairs among the rural families. She (Kaur) goes on to emphasis education of women as in important factor in the matter of decision-making process. In her words `Educated women are better placed as compared to their illiterate counter parts'. She started that she has never seen women as final decision

makers in many household matters except for cases for food and nutrition of children. The male members of the family solely do the financial activities. She claims that women have greater input in household decision-making if they are from medium status. She also claims that the socio-economic status is closely linked with women's decision-making power (Kaur, 1987:120).

Women play a significant role in domestic work, if not, a predominant role in agriculture production. One participatory research project found that women do more agricultural work than men in the high Mountain areas, equal or more than men in middle Hills, and less than men in the Terai. Women and men are participants and decision makers; share the responsibility for planting, transplanting, weeding harvesting; carrying grains to the mill for grinding, and collecting wood, water and fodder. Women's involvement is also significant in the care and management of livestock and poultry and as well as in kitchen gardening. The participation of women is varying according to geographical region. In the complex social system of the Hills, women's participation in agriculture further varies tremendously according to social group. Even though women's important role in agriculture, traditional social norms and customary laws, which are often gender biased are a barrier to women's equitable access to productive resources. This is one of the most important causes of women's backwardness (BBC, 2004:23-24).

The role of women in food production, industrial work, health provision, and education, women constitute the largest number of food producers-approximately 50 percent in Africa, 30 percent - 40 percent in Asia and slightly less in Latin America. This vital section of the food producers are themselves the most undernourished and in some places the hungriest part of population.

Women's health problems cannot be resolved unless the perception of her sexuality undergoes a fundamental change. The male member who decides on her reproductive capacity, there seems little possibility of resolving the health problem faced by these women, where education is concerned one billion women in the third world countries can not read and in some countries as much as 90 percent of female population is illiterate. The female dropout rates increase as they move up the education ladder from primary to secondary education. A questioning note", can we afford to trace any path of development without pooling the untapped resources of women?" She emphasize upon women as an indispensable human resources and the necessity to mobilize them for any significant and balanced development of a nation (Ahojja-Patel, 1998:17-18).

In Janajati community, women play vital social role in the family. There is high social mobility in Dalits women due to compulsion to earn for family livelihood. Male head of the household has absolute authority, women as they grow older gain power but are still considered had act as dependent to male figure and restricted social mobility due to the fact that dignity is attached to women's sexuality in Chhetri society (Acharya 2004:12).

Existing cultural groups and access to resources of women are determined by the social status of women. Generally, women belonging to Tibeto-Burman cultural groups had considerably greater freedom in matters such as choice of marries patterns, deciding the time of marriage and in selection of the indo-Aryan cultural group while indo- Aryan women were married early, had no choice in their life partners and were severely restricted in their social mobility, such findings did not generally apply to women belonging to Tibeto-Burman groups. In all cultural groups, however, it was found that women's access to modern resources in the form of knowledge and traditional and newly created assets that is land, machines, employment etc. was severely limited as long as there is no resource crunch in the family, the primary school age girls may get to go to school. Girl in lower income groups get little opportunity to go to school at all. Those who go to school get little opportunity to further their education beyond the secondary school (Acharya, 1994:1).

NGOs and Nepal's political parties have made only taken contributions to linking women's problems and questions. Although women are empowering themselves through their interaction with the status power structure their participation in the decision making process has properly streamlined, and they remain largely excluded from politics, government. Government they have been full access to formal political structures and processes their vision of the state would undoubtedly be guided more by factors like power sharing, self medium of resources and playing a role in policy formulation and implementation. However, Nepali women and distant from the axis of state power, as the human development report of Nepal says, "Gender empowerment in Nepal is abysmally low in relation to achievements at the regional and international level. The global GEM (Gender empowerment measure) is more than double that of Nepal. Women in all South Asian countries except Pakistan are more empowered than women in Nepal." (Hachhethu and Shrestha 2002:78).

Women's access in economic property, there is no ground to believe that women's access to land and other economic resources has increased in the last 24-25 years as their legal rights over property and inheritance has not changed much during this period. Even the recently promulgated amendments, to the law on property rights of women dose not change her access to parental property substantially. The law does provide easier access to property in her final household. As the census 2001, about 11 percent of households reported some land in female legal ownership (Acharya, 2003:47).

According to Acharya and Bennett (1982: 34-46) women's role in household decision-making is affected directly and indirectly by economic condition. If a woman has a greater economic participation she has a greater power of decision-making. Similarly, social and demographic factors also influence the role of decision-making. Small size of children implies higher economic participation and consequently greater decision-making power for women. Not all demographers ignored the topic of women's status since 1960s. However, the status of women has important demographic implication only in the last five years. It has not become the central variable in most theories of the fertility transition; it has at least entered the mainstream of social demography (Mason, 1986:285). Dixon (1978:6) indicates status of women is "an elusive concept" defines it as "the degree of women's access to and control over material resources (including food, income, land and other forms of wealth) and social resources including knowledge, power and prestige with in the family, in the community and society. Nepalese women play managerial role for decision-making i.e. farm management, resources allocation and domestic expenditure. There is variation between the communities regarding the male and female input in to the farm management decision. Acharya and Bennett have singled out decision-making from the multi dimensional concept of status which reflects the internal dynamic of sexual stratification with in the household they developed some model from the study eight different village comities from the status of women in Nepal. In this model, the village was more conceived to be operating in such four spheres of subsistence activities as household domestic work, agricultural production activities, work in the village labour market and local bazaar and total employment in the wider economy beyond the village. The finding of the model shows that in the first sphere women participation in farming and domestic activities constituted 86 percent women imparts account for 57 percent in agro production in second sphere, while their inputs in third and fourth sphere drop down to 38 percent and 36 percent, respectively. Their total contribution to the households' income remains 50 percent as oppose to

44 percent for males. The remaining 6 percent of income is contributed by the children of 10-14 years.

According to Nepal Planning Commission, (1992:92) a case study from Bajhang showed that about 20 percent of female households head were landless as compare to only about 9 percent of male-headed households. Slightly more female-headed household than male-headed households were in marginal former category no women were found in the category of medium and large formers. All females' households in this sample had income below poverty level.

Two different issues of women are: women's political participation and representation at decision-making levels. Participation is necessary but insufficient condition for representation dose not flow automatically from participation. Women all over the world have participated widely in political movements in times of crisis but, once the crisis is over, they are relegated again to the domestic area. In political perspective, very few women have been elected to executive position of village development committee and district development committee local institutions in 1997 only 289 women have elected on ward chairpersons in a total of 3993 wards. Between nearly 8000 chairperson and vice-chairperson, only 26 are women. Their proportion declines progressively as one move to higher decision-making position. The participation of Nepalese women in the judiciary is also negligible women constitute only some 4 percent of the judiciary's decision makers. There were one-secretary two women judges (special class) and a district judge as of 1997(ADB, 1999:41-45).

In Tamang community, education provides employment opportunities for women on equal footing with men. Participation in the decision-making inside the household sphere was found to be equal for men and women. The decision-making authority constituted 40.3 percent of the total. However, the female participation in decision-making authority for outside the household sphere was found to be dominated by male decision authority (Limbu, 1997:87).

One of the most powerful influences on women autonomy is region. Even after individual and household level factors are controlled, region plays a leading role in influencing almost every single index of autonomy, with Tamilian women experiencing significantly greater autonomy than women from Uttar Pradesh (Jejeebhoy, 1999).

The women of Nepal live in rural areas. Exception cases in cooking food, husbands in Nepal have a greater role in decision making than wives. Like as, one in two married women status that their husbands alone has final say in making-decision about the wife's health care. Women have greater role in what food to cook each day since cooking is often perceived as women's work with little male involvement. The data also shows that two in five married women state that their husband makes the role decision on the purchase of large household items, which are in three states that they need their husband's permission to visit family or relative and to make daily household purchase. It was found that currently married women are much less likely to have a final say in any of the five types of decision than women who are divorced, separated or widowed. Still, about one in four previously married women have someone else making-decision for them (DHS, 2001:45).

Nepalese society is based on patriarchal structure, which by design has relegated women to subordinate position; there were meaningful variation between communities in the extent of women's participation in the wider market economy and the overall household decision-making process. These variations fall into a consistent pattern, suggesting that women's household decision-making input in a given community is directly related to the strength of the inside/outside dichotomy. To varying degrees the 'inside' private domestic sphere is characterized the proper domain of women and the 'outside' sphere of politics, commerce and wider public concerns VDC meeting on political candidacy, water/irrigation system construction, budget allocation, village development programmes, selection of extension workers are mostly ascribed to men. Women in dichotomous village communities including the Maithali and Parbatia, have considerably less control in terms of decision-making than those in non-dichotomous communities including the Gurung, Rai, Baragaonle and Kham Magar. The Newar, Tamang and Tharu fall between these two groups (Strishakti, 1995:201).

The most important of empowering women with knowledge, skill and self-confidence are necessary to participate fully in the development process. The political history of Nepal one realizes that women have been actively, involved in the movement of restoring democracy in 1950 as well as in 1990. Women politicians only make up 21 members out of the 265 parliamentarians. In the general election of 1999 for the House of Representatives, the percentage of total women candidates were 6.1 percent out of which 5.8 percent were elected in the house of 205 members. There are 15 percent women members in the National Assembly out

of 60 members. The number of women in the cabinet is 1 out of 32. The 20 percent seat reservation for members in local political bodies in 1997 local level election has brought more than 39000 women in local bodies. A vast majority of these women need to be empowered politically through sensitization. Even the constitutional provision for integrating women in to the various level of political power structure has failed to increase women's participation in decision-making adequately. There are also very few women involved in the administrative and managerial position. In-fact, a vast majority of women involved in the unorganized sectors are illiterate, unskilled and earning nominal wages. Their working hours is longer than that prescribed by law for the organized sector and no children care and maternity facilities (Pradhan, Malla, 2000:2-3).

In Nepal, women's participation in decision-making remains quite low despite launching of administrative reform act and local self- governance act 1999 by the government of Nepal. Nepal's constitution accords equal human right to both men and women. Nepal has amended many laws to improve the human rights of women. The role of women in Nepalese society is different than that in other developed countries. Nepalese society is male dominated, there is social discrimination for women and that can be observed directly as well as indirectly. Traditionally women's status in Nepal, compared to man has always been low. They lacked proper nutrition weak for education, health services, and reproductive rights. In recent years, things have been changing and the status is also improving (MOHP, 2007:157-158).

Furthermore, International Conference on Population and Development (ICPD) (UNDP, 1994) focused on “advancing gender equality and equity and empowerment of women and the elimination of all kinds of violence against women, and ensuring women’s ability to control their own fertility, are cornerstones of population and development related programs.”

The above reference studies showed that the decision-making power is surrounded by various factor. In Nepal, female constitute more than half of total population with poor status. More female are engaged in household activities without decision-making power. They have to follow their male partners in most of the cases. A perusal of the available literature also makes it clear that there is a persisting controversy regarding women's input in decision-making process.

It can be concluded from the above studies, that females have low decision-making power due to lack of proper socio-cultural economic and demographic status. Females have more responsibilities in household chores, agricultural activities or labour force but they have less chance to decide freely but participate more. The massive literatures in the field in decision-making of women's show that very few women in political level decision-makers. Women from Tibeto-Burman groups are socially less constrained to women of Indo-Aryan groups. Men are found more participated in household decision-making than women. So, men are superior to women. Lastly, it should not be forgotten that without equal participation of male and female in all spheres of households and all aspects of life, there is less change to be developed societies, So that, women should bring into the main stream of development activities. Their physical presentation is not by only but by providing fully decision-making power in every sector.

1.4 Significance of the Study

This study signifies at both applied and theoretical level. In order to, find out and describe the women's educational status and their household decision-making power. The study centralizes women's ability as well as their weaknesses. The male dominated society has discarded the women participation in social, political and economical areas. The issue of gender discrimination should implement various programs based on women's self-confidence decision-making skills and ability to envision a better life and which addresses the concerns of Nepalese men, as they are the one's who will need to share power with women. This study studies directly the roles of women in the family.

This study deals with married Dalit and Brahmin/Chhetri women's decision-making power in household activities. This study describe the relationship between caste education status, find out the actual condition of women in this study area, socio-economic, to develop awareness toward decision-making in household. This study is important to explain socio-economic status and household decision-making power of women. This study describes the relationship between caste, educational status and household decision-making power of women.

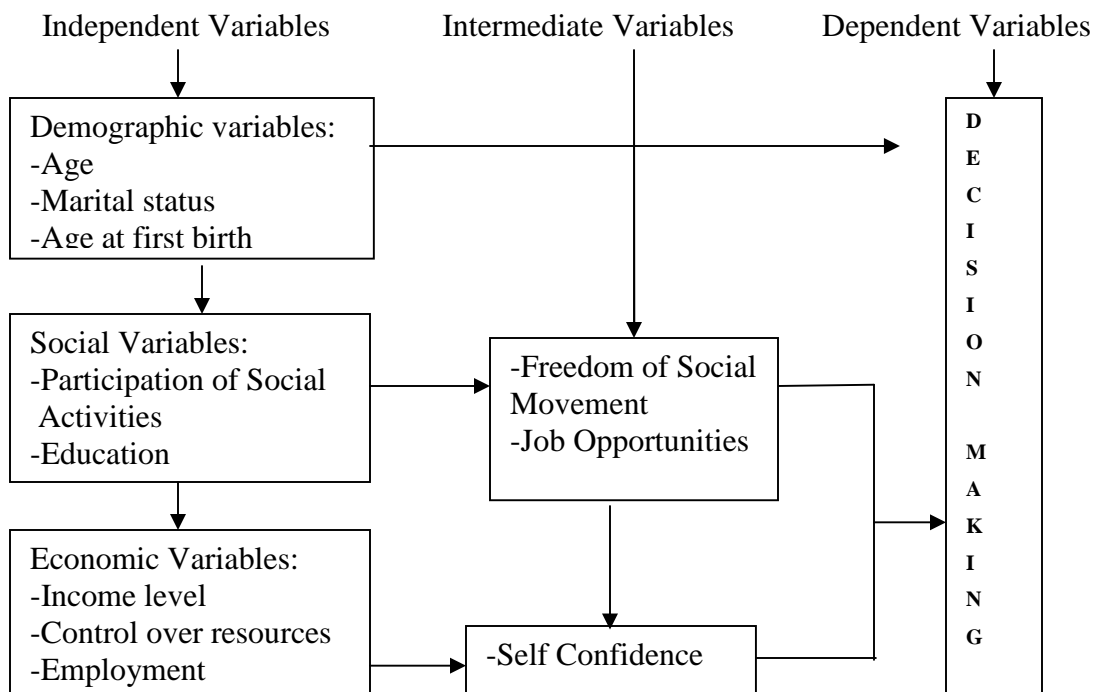
This study helps on women's self-confidence decision-making skill and ability to the better life. This study will help for other researchers to conduct further research in same issues of decision-making. The issue of women participation in decision-making power is very vague issues, which

cannot be studied at once. This study has limited time, source and cost. This study covers in a very small area ward no.7 and 9 of Dhawa VDC of Gorkha district. This study is limited only married women of age 15 years and above; very small of 102 respondents is based in the study. Thus, this study is limited within few households in comparison with the actual status of women within whole nation.

1.5 Conceptual Framework for the Study

This concept assumes that various indicators affect in women decision-making power. Decision-making is the dependent variable where as independent variables are categorized into three sub-topics namely: demographic, social and economic variables. There are some intermediate variables also. Under the demographic variable: age, marital status and age at first birth are taken. Similarly, participation in social activities and education are chosen from the social topic as well as income level, control over resources and employments are taken for economic variable. Demographic variables directly link to the decision-making. Social and economic variables indirectly link to dependent variable. Basically involvement of job, social movement and self-confidence play the vital roles to reach the decision-making process of women. They play the intermediate role.

Figure1: Conceptual Framework



1.6 Objectives of the Proposed Study

The general objective of the study is to compare women's decision-making power in household activities among Dalit and Brahmin/Chhetri married women in Dhawa VDC. The specific objectives are as follows:

- To examine the decision-making power of women in household on Dhawa VDC.
- To identify the socio-economic status of women in the study area.
- To analyze the role of women's decision-making on educational status.

1.7 Hypothesis of the Study

- Education doesn't influence the women decision on control over resources households, cropping, buying food product, selling surplus food, household purchase for daily needs, livestock forming, management of households and children's education.
- Caste doesn't influence the women decision on control over resources households, cropping, buying food product, selling surplus food, household purchase for daily needs, livestock forming, management of households and children's education.

1.8 Organization of the Study

The whole study is mainly divided into four chapters, they are: Introduction, Data and Method, Data Analysis Results & discussions, Summary and Conclusion. The first chapter is about introduction role of women in various sectors. It includes problem statement and research question. It deals with literature review from previous studies/publications books, articles and includes significant of the study, conceptual framework for the study, objectives of the study and organization of the study. The second chapter comprises of the data and method, which is introduction to the study area, and population research method, defines variables, tools and techniques for information/data collection, data management and specific objectives and methods. The third chapter deals with the demographic, social and economic characteristics of the sample population in the Dhawa VDC of Gorkha district and also deals with the analysis of the collected data regarding the household decision-making process and statistical analysis of various dependent and independent variables. The fourth chapter deals about summary and conclusion of the whole study.

Chapter-II: Data & Method

2.1 Introduction to the Study Area

Among six districts of Gandaki zone, Gorkha district is one, which has covered around 3610 square kilometers. Its bordering districts are Dhading in the east, Tanahun, Lamjung and Manang in the west, China in north and Dhading, Tanahun and Chitwan in the south. The district comprises of three electoral constituencies, 66 village development committee, 1 municipality and 13 poles. Headquarter of the district is Gorkha bazaar. The population of the district is 288134 among which 153727 are males and 134407 are females (census 2001). The district is located in between $27^{\circ} 47' 1''$ to $28^{\circ} 44' 22''$ northern latitude and $83^{\circ} 55' 13''$ to $85^{\circ} 36' 14''$ eastern longitude.

This study area is Dhawa VDC of Gorkha district of the western Nepal. Dhawa VDC is bordered in between Tangrang VDC of Gorkha district to the North, Baguwa and Asrang VDC of same district to the West, Borlang VDC to the South and Budhi Gandaki River or Dhading district to the East. It covers 16.05sq.Km (164.88 hector) areas. The topographical feature of the VDC is step hill. There are 9 wards in Dhawa VDC. All wards are known as rural wards, where water, communication, electricity and transportation facility is not available. There are only one secondary level school, only one lower secondary level school and three primary level schools in this VDC.

The total population of Dhawa VDC is 4040 among 2225 are females and 1815 are males, while the total no. of household is 846 and household size is 4.78(CBS, 2001). Dhawa VDC is moderately populated with people from diverse caste/ethnic communities: kami (213), Sonar (27), Chhetri (426), Newar (59), Gurung (54), Tamang (287), Brahmin-Hill (2078), Sanyasi (18), sharki (560), Damai/Dholi (198), Magar (14) and other (106). Most of the people are engaged in different occupations such as business, agriculture, government and private jobs, foreign labour, wage etc. The Brahmin and Chhetri were found to be the most economically secure groups while Dalits were least in this respect.

2.2 Introduction to study population

In Nepal, women hold the triple work responsibilities; reproduction, production and community management. In constitution of Nepal, all citizens of Nepal are equal under the law regarding of sex and caste/ethnicity. In actual practice there is discrimination between males and females. Various women are far from their rights. The gender-based discrimination originates in the home and gets institutionalized in every aspect. Females are not including in decision-making process, and males have monopolized the opportunities and benefits available in the societies.

The study is Dhawa VDC of Gorkha district. I choose the purposive sampling only ward no. 7 and 9. The study populations are subjected to discrimination in the deep-rooted social culture since the early infancy. In this study, 102 women were interviewed. Out of 102 respondents about 90 found as currently married and 12 as widow. 31 women are illiterate, which are mostly involved in agriculture worker and housewife. Women had little freedom of movement, support from their natal family after marriage and limited opportunities for control over economic resources. She has little say in domestic decision. All study populations are Hindu. All population speaks mother tongue language Nepali. All respondents were not faced any problems of dowry. Most of respondents were not faced difficulties living post-marital residence near natal home. Various respondents' children were stopping to go school because of poverty; they are work in agriculture sector. The study women's age at marriage is earlier than the nation.

2.3 Research Method

This study depends on the household survey. Questionnaire, observation and key informants interview are the technique of the study. This study has based on exploratory and descriptive research method. This method was used to collect, explain and analyzed the data. This study used qualitative method to collect household survey questionnaire, observation and key informant interview and quantitative method frequency distribution tables, cross distribution tables, ratio, average and percentage distribution, figures and statistical analysis.

This study has covered ward no. 7&9 of Dhawa VDC of Gorkha district for the study area. In this study, 102 females are taken as sample, purposively. Research issue was not taken before researcher, which is my village area and Dalit area, so that I like to select this area.

2.4 Definition of Variables

This study defines the variable in the specific context as follows:

Participation of Social Activities: Sample population who involves in women's groups, or participates in school management, water and forest management committee.

Income Level: Productive income is grouped in five levels 1000-5000, 5000-10000, 10000-15000, 15000-20000 and 20000 accordingly.

Control over the Resources: Daily uses goods: utensils, grains, vegetables, cattle, food, pet, money, water, lands are controlled by sample population with authority. It means they should purchase or sell by their own decision. It denies if they have only access to use those stuffs.

Employment: It is the situation that targeted population engage in any occupation; teacher, daily wages, agriculture, business etc.

2.5 Types of Study

This study was based on descriptive and exploratory study. Descriptive research method was used to describe the exact women's decision-making power in household activities and socio-economic status.

2.6 Determination Sample Size

The total population of this VDC is 4040. The samples size for this study was 102 out of 107 households. Still rest households were not included in the study area as only males and unmarried girls were there. All of them were chosen from ward no. 7 and 9 of Dhawa VDC of Gorkha district for the study area. There are three groups of population as Brahmin, Chhetri and Dalit.

2.7 Tools and Techniques for Data Collection

To collect necessary and reliable data for this study, I used primary and secondary data. Primary data are collected by opinion survey technique. While conducting primary survey, questionnaire is distributed to different groups. Secondary data are collected from publication, journal, report, and articles. 102 sample respondents are selected from Dhawa VDC ward no. 7 and 9, who are

related to women have been taking fulfill of the study. The respondents are divided into three groups. Social and economic variables have analyzed and presented in this study. Qualitative and quantitative data were collected through household survey questionnaire, observation and key informant interview to complete this study. Questionnaire is designed in such a way that it provided all required data needed to fulfill the objectives of the study. We filled up the questionnaire by face to face discussion to collect the data, when we collected data then analyzed by frequency distribution tables, cross distribution tables, ratio, average and percentage distribution, figures and used to test hypothesis by correlation which helps to women decision-making power in household activities in the study population.

2.8 Data Management

Questionnaire is designed providing all required information needed to fulfill the objectives of the study. They are mainly divided into twelve headings as individual information, household information, marital status, agriculture information, information on energy, birth information, socio-economic information, educational status and information to family planning. All those schedules provided the information about socio-economic condition of women and their situation in household decision-making. During the study, the data were collected with the help of structured and non-structured questionnaires. After the collection of data, the collected data were analyzed descriptively. Quantitative data are presented in terms of frequency distribution tables, cross tabulation, ratio, average and percentage distribution and figures are used for the illustration of both qualitative and quantitative information. Data processing has done using excel. The correlation coefficient is used to test hypothesis.

2.9 Specific Objectives and Methods

Mainly three specific objectives are used to this study. These objectives are: examine the decision making power of married women in household on Dhawa VDC, identify the socio-economic status of women in the study area and analyze the role of women's decision making on educational status. The specific objective of the study is to compare decision-making power of women in household activities between Brahmin/Chhetri. This study was based on descriptive and exploratory study. The qualitative, quantitative and triangulation methods are used to collect the household survey, questionnaire, observation and key informants interview.

CHAPTER-III: DATA ANALYSIS RESULTS AND DISCUSSIONS

We get raw data from the field so it needs to analyze to get fruitful results. This chapter deals with the demographic, social, economic characteristics of household and respondents. Out of total 107 or 846 households, 102 households were taken as sample. Women's status in terms of decision-making is taken in different aspect of household as well as other activities, such as, types of dowry, pewa, control over resources, cropping pattern, buying and selling about live stocks, type of fuel, family income activities, family debt, buying food products, selling surplus food, participation of social activities, education for children and family planning method.

3.1 Demographic characteristics

In this parts, the demographic characteristics such as, household population by age and sex ratio, marital status, age at marriage, age at first birth of the child have analyzed.

3.1.1 Age and Sex Composition of Household Population with Sex Ratio

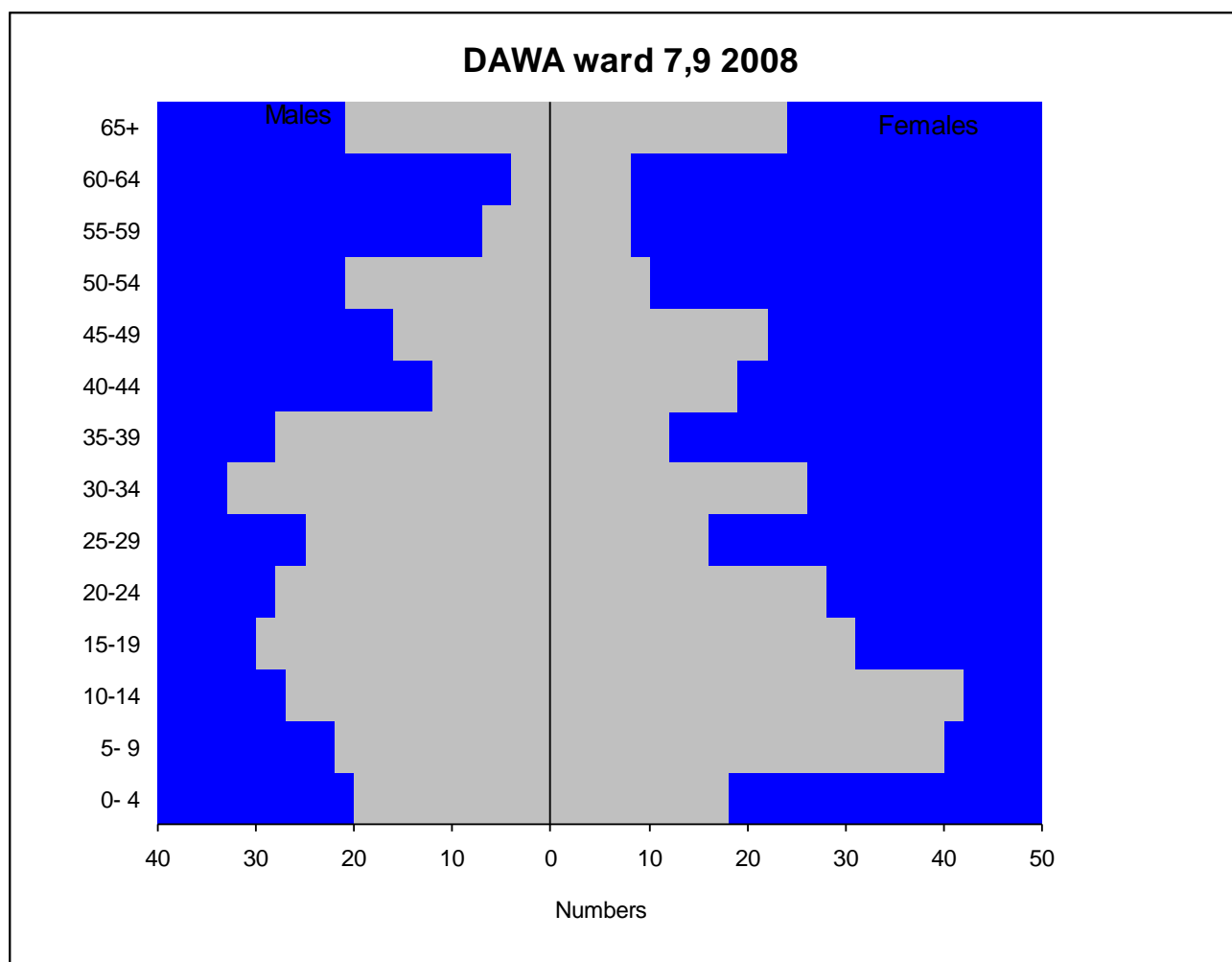
Information on age and sex of each household member were obtained from the married women of age group up to 12 years. In 102 sampled households, the total population was 598, among total population 294 were males and 304 were females. The sex ratio was found 96.7, which is lower than that of national figure (99.8) and higher than district figure (87.4). The highest proportions of the population were found in age group 10-14 years (11.5%). The lowest proportions of the population were in age group 60-64 years. The proportion of female population was highest is the age group 10-14 years (13.8%) while the highest proportion of male population was in age group 30-34 years (11.2%)(Table 1).

Table 1: Distribution of Household Population by Age and Sex with Sex Ratio, 2008

Age Group	Male		Female		Sex Ratio	Total	
	Cases	Percent	Cases	Percent		Cases	Percent
0-4	20	6.8	18	5.9	111.1	38	6.3
5-9	22	7.5	40	13.2	55.0	62	10.4
10-14	27	9.2	42	13.8	64.3	69	11.5
15-19	30	10.2	31	10.2	96.8	61	10.2
20-24	28	9.5	28	9.2	100.0	56	9.4
25-29	25	8.5	16	5.3	156.3	41	6.8
30-34	33	11.2	26	8.6	126.9	59	9.9
35-39	28	9.5	12	3.9	233.3	40	6.7
40-44	12	4.2	19	6.3	63.2	31	5.2
45-49	16	5.4	22	7.2	72.7	38	6.4
50-54	21	7.1	10	3.3	210.0	31	5.2
55-59	7	2.4	8	2.6	87.5	15	2.5
60-64	4	1.4	8	2.6	50.0	12	2.0
65+	21	7.1	24	7.9	87.5	45	7.5
Total	294	100.0	304	100.	96.7	598	100.0

Source: Field survey, 2008

Figure3: Population Pyramid



3.1.2 Age composition of Respondents by Age

The age is most important factor in demographic and it makes difference in decision-making roles and responsibilities. The age groups are divided as 10-14, 15-19, 20-24, 25-59, 30-34, 35-39, 40-44, 45-49, 50-54, 55-59, 60-64, and 65& above years of age. Out of 73 Brahmin/Chhetri respondents, the highest population was found in age group 40-44 years (21.9%) and the lowest population was found in age group 15-19 years (1.4%). Dalit respondents, the highest population was found in age group 30-34 years (27.7%). 9.6 percent Brahmin/Chhetri respondents was found in age group 65 and above years and was not found in age group 10-14 years. (Table2).

Table 2: Distribution of Respondents by Age, 2008

Age groups	Brahmin/Chhetri		Dalit		Total	
	Cases	Percent	Cases	Percent	Cases	Percent
10-14	-	-	1	3.4	1	1.0

15-19	1	1.4	1	3.4	2	2.0
20-24	4	5.5	1	3.4	5	4.9
25-29	2	2.7	4	13.8	6	5.9
30-34	15	20.5	8	27.7	23	22.5
35-39	13	17.9	2	6.9	15	14.7
40-44	16	21.9	3	10.4	19	18.6
45-49	6	8.2	5	17.2	11	10.7
50-54	7	9.6	-	-	7	6.9
55-59	-	-	2	6.9	2	2.0
60-64	2	2.7	2	6.9	4	3.9
65&above	7	9.6	-	-	7	6.9
Total	73	100.0	29	100.0	102	100.0

Source: Field survey, 2008

3.1.3 Caste Composition of Respondents

The group of population is identified by common culture or caste. Some have a same collective identity. These groups have common language, religion. People of different castes are inhabited in Dhawa VDC, mainly Brahmin, Chhetri and Dalit (Sharki). This study shows 65.7 percent of Brahmin, 28.4 percent of Dalit (Sharki) and only 5.9 percent of Chhetri. This clearly shows that in study population lowest number is Chhetri and highest number is Brahmin (Table 3).

Table 3: Distribution of Respondents by Caste, 2008

Caste	Frequency	Percent
Brahmin	67	65.7
Chhetri	6	5.9
Dalit	29	28.4
Total	102	100.0

Source: Field survey, 2008

3.1.4 Marital Status of Respondents

Marriage is a social contract for the satisfaction of physical, biological, psychological and spiritual needs of male and female leading to information of a family to bring up children and live. In our society, marriage determines the social roles and responsibilities of people. Female's role also increases in family only after marriage. The marital status in this study is grouped into two categories: currently married and widow. Out of 90 respondents about 38.9 percent found currently married in 30-39 age group, 41.7 percent as widow in 40-49 age group. Low number of widow respondents indicates women bounded by this study (Table 4).

Table 4: Distribution of Respondents by Marital Status, 2008

Age Group	Currently Married		Widow		Total	
	Cases	Percent	Cases	Percent	Cases	Percent
10-19	3	3.3	-	-	3	2.9
20-29	11	12.2	-	-	11	10.8
30-39	35	38.9	3	25.0	38	37.3
40-49	25	27.8	5	41.7	30	29.4
50-59	9	10.0	-	-	9	8.8
60&Above	7	7.8	4	33.3	11	10.8
Total	90	100.0	12	100.0	102	100.0

Source: Field survey, 2008

3.1.5 Age at Marriage of Respondents

In Nepal, with parental consent, legal minimum age at marriage for both boys and girls is 18 years. If the boys and girls want to marry on their own then the minimum legal age at marriage for both is to be 20 years. In some societies, girls are still married at younger ages. The age at marriage in this study is grouped into five age groups: 5-9, 10-14, 15-19, 20-24, 25-29 and 30-34 years. It was observed that age at marriage is high with in age group 15-19 years. 49.3 percent Brahmin/Chhetri and 65.6 percent Dalit respondents have reported to have their first marriage in age group 15-19 years. 11.0 percent Brahmin/Chhetri respondents get married in ages 5-9 years and 27.4 percent Brahmin/Chhetri respondents get married in ages 10-14 years. Mean age at marriage, an average Brahmin/Chhetri group lies 15.3 years and Dalit 17.5 years (Table 5).

Table 5: Distribution of Respondents by Age at Marriage, 2008

Age Groups	Brahmin/Chhetri		Dalit		Total	
	Cases	Percent	Cases	Percent	Cases	Percent
5-9	8	11.0	-	-	8	7.8
10-14	20	27.4	4	13.8	24	23.6
15-19	36	49.3	19	65.6	55	53.9
20-24	7	9.6	5	17.2	12	11.8
25-29	2	2.7	1	3.4	3	2.9
Total	73	100.0	29	100.0	102	100.0

Source: Field survey, 2008

3.1.6 Types of Marriage of the Respondents

In general two type of marriage, the formal is an arranged marriage and love marriage .On the arranged marriage, decision-making to marriage more on the parent opinion than boys and girls. It is clear that 94.5 percent Brahmin/Chhetri respondents have done arrange marriage and 5.5 percent have done love marriage. Dalit 79.3 percent respondents have done arrange marriage and 20.7 percent have done love marriage. It is clearly shown that Dalit respondents done love marriage than Brahmin/Chhetri respondents (Table 6).

Table 6: Distribution of Types of Marriage by Respondents, 2008

Type of Marriage	Brahmin/Chhetri		Dalit		Total	
	Cases	Percent	Cases	Percent	Cases	Percent
Love	4	5.5	6	20.7	10	9.8
Arrange	69	94.5	23	79.3	92	90.2
Total	73	100.0	29	100.0	102	100.0

Source: Field survey, 2008

3.1.7 Age at Birth of First Child

In this study, the age at birth of first child was grouped into six age groups: 10-14, 15-19, 20-24, 25-29 and 30-34 years. Almost 52.1 percent Brahmin/Chhetri respondents were with in age of

15-19 years and 69.0 percent Dalit respondents were with in age of 15-19 years at the birth of first child. This shows that Brahmin/Chhetri respondents average age 20 years and Dalit respondents 18.6 years give at the birth in of first child (Table 7).

Table 7: Distribution of Respondents by Age at Birth of First Child, 2008

Age Groups	Brahmin/Chhetri		Dalit		Total	
	Cases	Percent	Cases	Percent	Cases	Percent
10-14	-	-	1	3.4	1	1.0
15-19	38	52.1	20	69.0	58	56.9
20-24	28	38.4	6	20.7	34	33.2
25-29	5	6.8	2	6.9	7	6.9
30-34	2	2.7	-	-	2	2.0
Total	73	100.0	29	100.0	102	100.0

Source: Field survey, 2008

3.1.8 Current status of Respondents

In this study, current status of respondents was grouped into three groups as normal, conceived and postpartum amenorrhea. Almost 71.2 percent Brahmin/Chhetri and 62.1percent Dalit respondents' current status was normal. This study showed that current status of respondents almost normal. In conceived and postpartum amenorrhea, Dalit respondents' were high than Brahmin/Chhetri (Table 8).

Table 8: Distribution of Respondents by Current Status, 2008

Current Status	Brahmin/Chhetri		Dalit		Total	
	Cases	Percent	Cases	Percent	Cases	Percent
Normal	52	71.2	18	62.1	77	75.5
Conceived	2	2.7	3	10.3	5	4.9
Postpartum amenorrhea	19	26.1	8	27.6	20	19.6
Total	73	100.0	29	100.0	102	100.0

Source: Field survey, 2008

3.1.9 Type of Family

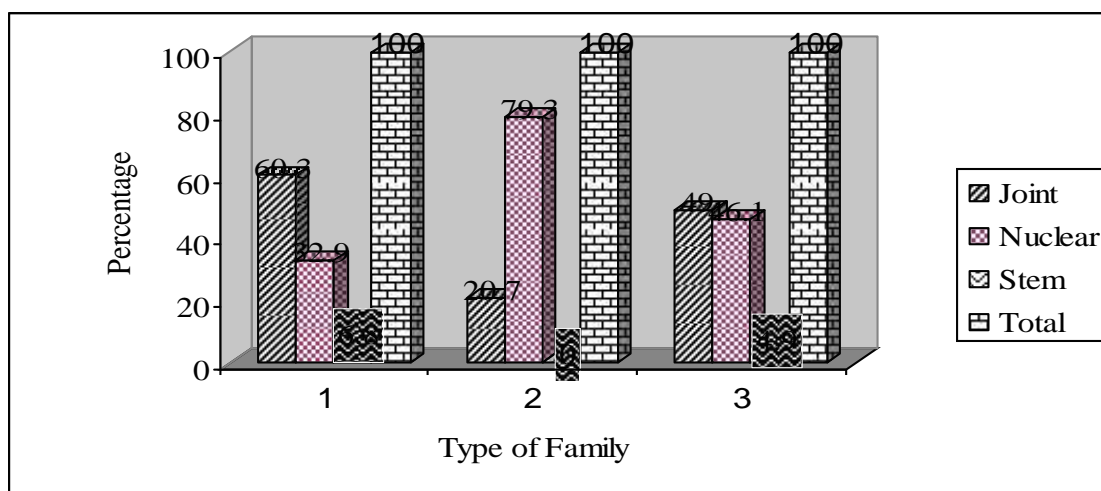
In our society various type of family live there. In this study, there are three types of family as extended, nuclear and stem family. A nuclear family consists of only a single conjugal unit, a stem family contains two or more nuclear units, but with no more than one per generation; and an extended family contains two or more nuclear units at least two of which are in the same generation. This study has shown that 60.3 percent Brahmin/Chhetri respondents were of extended family and 6.8 percent of respondents were stem family. 79.3 percent Dalit respondents were of nuclear family. Stem family household is very low in Brahmin/Chhetri respondents and there was no respondent in Dalit (Table 9).

Table 9: Distribution of Respondents by Type of Family, 2008

Type of Family	Brahmin/Chhetri		Dalit		Total	
	Cases	Percent	Cases	Percent	Cases	Percent
Extended	44	60.3	6	20.7	50	49.0
Nuclear	24	32.9	23	79.3	47	46.1
Stem	5	6.8	-	-	5	4.9
Total	73	100.0	29	100.0	102	100.0

Source: Field survey, 2008

Figure 4: Percentage Distribution of Respondents by Type of Family



3.1.10 Marital Status of Respondents Family

Female role increase in family only after marriage, it enhances their decision making power. The marital status of respondent's family is study in to three groups: currently married unmarried and widower/widow. Among 598 family members 55 percent Brahmin/Chhetri and 39 percent Dalit respondents were currently married, 39.4 percent Brahmin/Chhetri and 58.5 percent Dalit respondents were unmarried and 5.6 percent Brahmin/Chhetri and 2.5 percent Dalit respondents were widower/ widow. It shows that largest number of population comprise in currently married status (Table 10).

Table 10: Distribution of Respondents Family by Marital Status, 2008

Marital Status	Brahmin/Chhetri		Dalit		Total	
	Cases	Percent	Cases	Percent	Cases	Percent
Currently married	216	55.0	80	39.0	296	49.5
Unmarried	155	39.4	120	58.5	275	46.0
Widower/ Widow	22	5.6	5	2.5	27	4.5
Total	393	100.0	205	100.0	598	100.0

Source: Field survey, 2008

3.1.11 Type of Dowry used of Respondents

Dowry system revels as a cultural practice of Hindu traditional society initiated throughout the Nepalese society as well as Indian society. This study found that out of 102 respondents, 28 respondents were not related to dowry and other was related to dowry. In this study, types of dowry are grouped into three groups: consumable goods only, jewelry and consumable goods and money and consumable goods. It was observed that among 74 respondents, 90.5 percent of respondents were used to consumable goods only, 6.8 percent of respondents were used to money and consumable goods and only 2.7 percent of respondents were used to jewelry and consumable goods. It found that most of respondents were used to consumable goods during them marriage ceremony (Table 11).

Table 11: Distribution of Respondents by Type of Dowry Used, 2008

Type of Dowry	Frequency	Percent
Consumable goods only	67	90.5
Consumable goods and Money	5	6.8

Consumable goods and Jewelry	2	2.7
Total	74	100.0

Source: Field survey, 2008

3.1.12 Age Difference between Respondents and her Husband

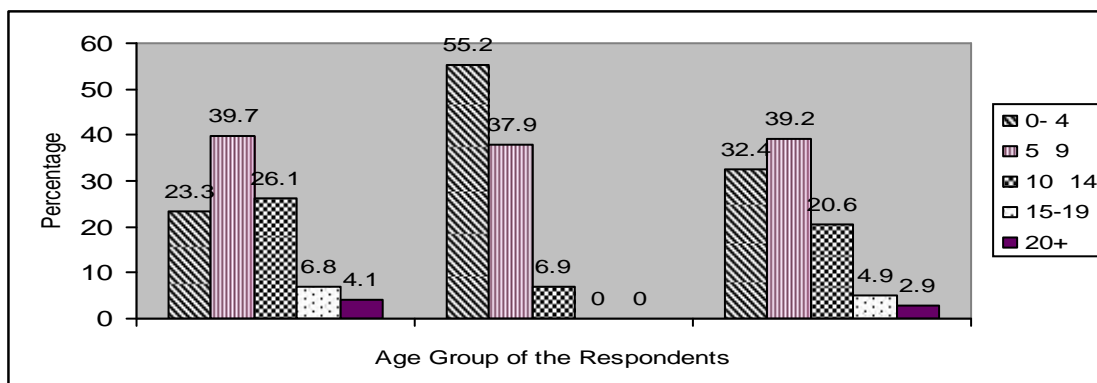
Spouse age difference may affect women's status. This study showed that 4.1 percent Brahmin/Chhetri respondents' age difference above 20 years. It indicates that Brahmin/Chhetri respondents and her husband average age difference 8.2 year and Dalit respondents' age difference 7.2 years. Brahmin/Chhetri age gap is longer than Dalit respondents (Table 12).

Table 12: Distribution of Age Difference between Respondent and her Husband, 2008.

Age difference years	Brahmin/Chhetri		Dalit		Total	
	Cases	Percent	Cases	Percent	Cases	Percent
0-4	17	23.3	16	55.2	33	32.4
5-9	29	39.7	11	37.9	40	39.2
10-14	19	26.1	2	6.9	21	20.6
15-19	5	6.8	-	-	5	4.9
20+	3	4.1	-	-	3	2.9
Total	73	100.0	29	100.0	102	100.0

Source: Field survey, 2008

Figure 5: Percentage Distribution of Age Difference between Respondent and her Husband



3.2 Socio-economic Characteristics

This part relates to social characteristics like educational status of respondents and social activities. Economic characteristics like occupation, land ownership, pewa, and income level of respondents have analyzed.

3.2.1 Educational Status of Respondents Family

Education is the most important part in development process. In this study, respondents' family's education level is very low comparing to nation. It is found that only 12.2 percent females have attended to higher level education. Only 41.4 percent females have attended to primary level education and 17.8 percent females have attended to secondary level education. Most of females have not attended to higher education and also shows that 28.6 percent of females were illiterate. Most females are not attended to education (Table 13).

Table 13: Distribution of Respondents Family by Education, 2008

Education Status	Male	Percent	Female	Percent	Total	Percent
Illiterate	43	14.6	87	28.6	130	21.8
Primary	71	24.1	126	41.4	197	32.9
Secondary	61	20.8	54	17.8	115	19.2
Higher	119	40.5	37	12.2	156	26.1
Total	294	100.0	304	100.0	598	100.0

Source: Field survey, 2008

3.2.2 Educational Status of the Respondents

Education play vital role on decision-making power in society. It helps to provide the changing attitude and for attribute conventional one. Among the two group 51.7 percent of Dalit and 21.9 percent Brahmin/Chhetri respondents were found illiterate. 50.7 percent respondents were found primary level, 15.1 respondents were secondary level and 12.3 were found higher level in Brahmin/Chhetri groups. 48.3 percent Dalit respondents were found primary level. In Dalit respondents there are no education level above the primary level. It shows that most of Brahmin/Chhetri respondents were involve in education than Dalit respondents (Table 14).

Table 14: Distribution of respondents by Educational Status, 2008

Education Status	Brahmin/Chhetri		Dalit		Total	
	Cases	Percent	Cases	Percent	Cases	Percent
Illiterate	16	21.9	15	51.7	31	30.4
Primary	37	50.7	14	48.3	51	50.0
Secondary	11	15.1	-	-	11	10.8
Higher	9	12.3	-	-	9	8.8
Total	73	100.0	29	100.0	102	100.0

Source: Field survey, 2008

3.2.3 Occupational Status of the Respondents

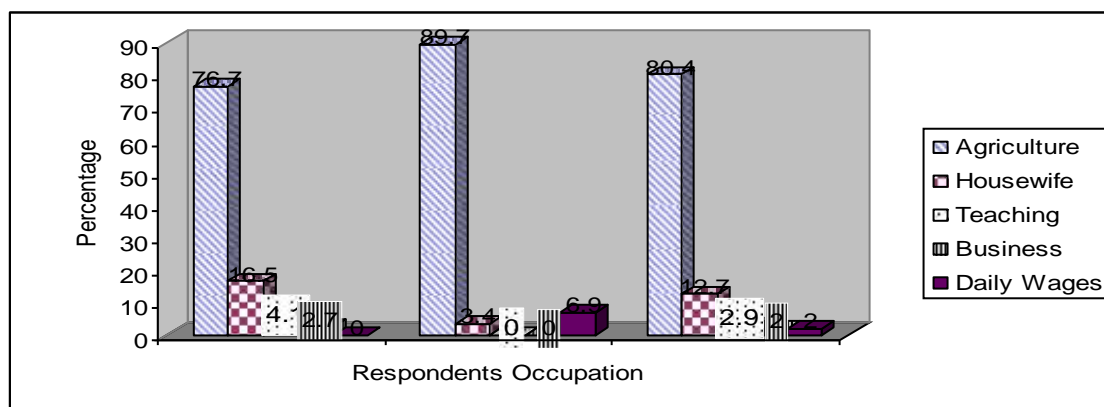
Occupation is one of the major factors to empower women economically. Occupational status of the respondents has strong relationship with the household decision-making. Most of the respondents involve in agricultural work in the study area. In Brahmin/ Chhetri 56 respondents were followed by agriculture activities, 12 respondents were housewives, 3 respondents were engaged in teaching, and 2 respondents were business. In Dalit 26 respondents work in agriculture, 1 was housewife, 2 respondents were daily wages and there are no respondents in teaching field and business (Table 15).

Table 15: Distribution of the Respondents by Occupational Status, 2008

Occupation	Brahmin/Chhetri		Dalit		Total	
	Cases	Percent	Cases	Percent	Cases	Percent
Agriculture	56	76.7	26	89.7	82	80.4
Housewife	12	16.5	1	3.4	13	12.7
Teaching	3	4.1	-	-	3	2.9
Business	2	2.7	-	-	2	2.0
Daily Wages	-	-	2	6.9	2	2.0
Total	73	100.0	29	100.0	102	100.0

Source: Field survey, 2008

Figure 6: Percentage Distribution of the Respondents by Occupational Status



3.2.4 Land Distribution

Nepal is agricultural country and most of the people depended upon agriculture as main occupation. Land had great contribution in agriculture and it measures the economic status of people. Almost 90.4 percent Brahmin/ Chhetri and 82.8 percent Dalit respondents did not have land in their own name. Only 12 respondents had land. 1.4 percent Brahmin/ Chhetri and 3.4 percent Dalit respondents had only 1-5 ropani, 1.4 percent Brahmin/ Chhetri and 13.8 percent Dalit respondents have only 6-11 ropani, 5.4 percent Brahmin/ Chhetri respondents had 12-17 ropani and only 1.4 percent Brahmin/ Chhetri had more than 18 ropani. This study shows that the least number of respondents had landholding (Table 16).

Table 16: Distribution of Respondents Own Name by land, 2008

Land Ropani	Brahmin/Chhetri		Dalit		Total	
	Cases	Percent	Cases	Percent	Cases	Percent
No land	66	90.4	24	82.8	90	88.2
1-5	1	1.4	1	3.4	2	2.0
6-11	1	1.4	4	13.8	5	4.9
12-17	4	5.4	-	-	4	3.9
18+	1	1.4	-	-	1	1.0
Total	73	100.0	29	100.0		

Source: Field survey, 2008

3.2.5 Land Owner in their Family

In Nepal women are dominated by various factors. In this study least number of women had landowner. The land owner was grouped into four groups: Almost 50.7 percent Brahmin/ Chhetri and 82.8 percent Dalit land owner are their husband name, 13.7 percent Brahmin/ Chhetri and 6.9 percent Dalit is in their own selves, where, 20.5 percent Brahmin/ Chhetri and 3.4 percent Dalit is in Father in laws name and 15.1 percent Brahmin/ Chhetri and 6.9 percent Dalit is in son name land owner. In this study, more Brahmin/Chhetri group's respondents are landowner themselves than Dalit (Table 17).

Table 17: Distribution of Land Owner by Respondents Family, 2008

Land owner	Brahmin/Chhetri		Dalit		Total	
	Cases	Percent	Cases	Percent	Cases	Percent
Husband	37	50.7	24	82.8	61	59.8
Self	10	13.7	2	6.9	12	11.8
Father in law	15	20.5	1	3.4	16	15.7
Son	11	15.1	2	6.9	13	12.7
Total	73	100.0	29	100.0	102	100.0

Source: Field survey, 2008

3.2.6 Type of Livestock

In this study respondents have 5 types of animals: cow, ox, buffalo, goat and hen. The Brahmin/Chhetri community, they have 117 buffalo and 396 goats and Dalit have 96 hens and 35 goat. This study showed that Dalit cannot have a lot of buffalo, ox and goat but they have to hen. Total 798 livestock, Dalit have to the lowest number of livestock than Brahmin and Chhetri (Table 18).

Table 18: Distribution of Respondents by Type of Livestock, 2008

Type of livestock	Brahmin/Chhetri		Dalit		Total	
	Cases	Percent	Cases	Percent	Cases	Percent
Cow	32	5.1	14	8.1	46	5.8
Buffalo	117	18.7	18	10.4	135	16.9
Ox	58	9.3	10	5.8	68	8.5
Goat	396	63.4	35	20.2	431	54.0
Hen	22	3.5	96	55.5	118	14.8
Total	625	100.0	173	100.0	798	100.0

Source: Field survey, 2008

3.2.7 Respondents by Livestock as 'PEWA'

Women who have 'PEWA' are considered to be socio-economically sound. This study showed that among Brahmin/Chhetri 26.0 percent of respondents have 'PEWA' and 74.0 percent of respondents did not have having livestock as a 'PEWA'. In Dalit 34.5 percent of respondents had 'PEWA' and 65.5 percent of respondents did not have livestock as 'PEWA' (Table 19).

Table 19: Distribution of Respondents by Livestock as 'PEWA', 2008

Having 'PEWA'	Brahmin/Chhetri		Dalit		Total	
	Cases	Percent	Cases	Percent	Cases	Percent
Yes	19	26.0	10	34.5	29	28.4
No	54	74.0	19	65.5	73	71.6
Total	73	100.0	29	100.0	102	100.0

Source: Field survey, 2008

3.2.8 Monthly Income Level of Respondents Family

Income level is the represents the economic status of people. In this study, income level is classified into six groups: no income, 1,000-5,000, 5,000-10,000, 10000-15,000, 15,000-20,000 and 20,000+. In this study, it was observed that 1.4 percent of Brahmin/Chhetri respondents and 10.3 percent of Dalit respondents did not have income. It is found that 50.7 percent Brahmin/Chhetri respondents and 48.3 percent Dalit respondent's family's income level is "between"1,000-5,000. Dalit income level is low and Brahmin/Chhetri income level is high.

Dalit respondent's family had no income level above 15,000. So it concluded that income level of Brahmin/Chhetri is better than Dalit (Table 20).

Table 20: Distribution of Respondents Family Income Level, 2008

Income level	Brahmin/Chhetri		Dalit		Total	
	Cases	Percent	Cases	Percent	Cases	Percent
No income	1	1.4	3	10.3	4	3.9
1000-5000	37	50.7	14	48.3	51	50.0
5000-10000	9	12.3	12	41.4	21	20.6
10000-15000	17	23.3	-	-	17	16.6
15000-20000	2	2.7	-	-	2	2.0
20000+	7	9.6	-	-	7	6.9
Total	73	100.0	29	100.0	102	100.0

Source: Field survey, 2008

3.2.9 Main Sources of Family Income

Main sources of respondents' family income are classified into five groups. In this study, it was observed that 46.6 percent Brahmin/Chhetri respondents' income source is only agriculture, 9.6 percent income source is business. Dalit respondents', 86.2 percent income source is service, only 6.9 percent income source is agriculture, 2.0 percent respondents' income source is daily wages. It shows that main source of Brahmin/Chhetri is agriculture and Dalit is service. Brahmin/Chhetri isn't engaged daily wages and Dalit isn't engaged livestock and business for income (Table 21).

Table 21: Distribution of Respondents Family by Main Source of Income, 2008

Main Source	Brahmin/Chhetri		Dalit		Total	
	Cases	Percent	Cases	Percent	Cases	Percent
Agriculture	34	46.6	2	6.9	36	35.2
Service	23	31.5	25	86.2	48	47.1
Livestock	9	12.3	-	-	9	8.8
Business	7	9.6	-	-	7	6.9

Daily wage	-	-	2	2	2	2.0
Total	73	100.0	29	100.0	102	100.0

Source: Field survey, 2008

3.2.10 Distribution of Respondents by Keeping the Household Income

Male and female both need to have equal responsible for household activities. They need to share equal benefits in family. This study compared keeping the household income that between Brahmin/Chhetri and Dalit respondents. Brahmin/Chhetri respondents, 13.7 percent keep their household income with them, 39.7 percent husbands and 37 percent father in laws and 9.6 percent keep son. Dalit respondents, 10.4 percent keep their household income with them, 72.4 percent husbands and 17.2 percent fathers in law. This study showed that Brahmin/Chhetri women have more control over the household income than Dalit (Table 22).

Table 22: Distribution of Respondents by Keeping the Household Income, 2008

Income taker	Brahmin/Chhetri		Dalit		Total	
	Cases	Percent	Cases	Percent	Cases	Percent
Father in Law	27	37.0	5	17.2	32	13.4
Husband	29	39.7	21	72.4	50	49.0
Self	10	13.7	3	10.4	13	12.7
Son	7	9.6	-	-	7	6.9
Total	73	100.0	29	100.0	102	100.0

Source: Field survey, 2008

3.2.12 Distribution of Respondents by Money 'PEWA'

Women who have 'PEWA' are considered to be socio-economically sound. It is observed that some of the respondents did not have money 'PEWA'. Only 8.2 percent Brahmin/Chhetri respondents had money 'PEWA' and 91.8 percent Brahmin/Chhetri respondents did not have money 'PEWA'. Only 3.4 percent Dalit respondents had money 'PEWA' and 96.6 percent Dalit

respondents did not have money 'PEWA'. It concluded that Brahmin/Chhetri respondents had money 'PEWA' than Dalit but more respondents hadn't 'PEWA' (Table 23).

Table 23: distribution of Respondents by Money 'PEWA', 2008

Having PEWA	Brahmin/Chhetri		Dalit		Total	
	Cases	Percent	Cases	Percent	Cases	Percent
Yes	6	8.2	1	3.4	7	6.9
No	67	91.8	28	96.6	95	93.1
Total	73	100.0	29	100.0	102	100.0

Source: Field survey, 2008

3.2.12 Roof of House Made

This study showed that roof of house made by three types: stone, tin and grass. Various respondents used tin and fewer respondents had grass. 60.3 percent Brahmin/Chhetri and 27.6 percent Dalit respondents were used to tin, 35.6 percent Brahmin/Chhetri and 62.1 percent Dalit respondents were used to stone and 4.1 percent Brahmin/Chhetri and 10.3 percent Dalit respondents were used to grass in their house roof. It is found that Brahmin/Chhetri more used to tin and Dalit more used to stone in their house (Table 24).

Table 24: Distribution of Respondents by Making Roof, 2008

Made by	Brahmin/Chhetri		Dalit		Total	
	Cases	Percent	Cases	Percent	Cases	Percent
Grass	3	4.1	3	10.3	6	5.9
Stone	26	35.6	18	62.1	44	43.1
Tin	44	60.3	8	27.6	52	51.0
Total	73	100.0	29	100.0	102	100.0

Source: Field survey, 2008

3.2.12 Type of Fuel Used for Cooking

In this study, we found that three types of fuel were used. They are: Bio-gas, wood and kerosene. Most people used to wood for cooking in rural area so that this study showed that 95.9 percent Brahmin/Chhetri respondents have been using wood for cooking, 2.7 percent respondents

kerosene for cooking and only 1.4 percent respondents Bio-gas and 100 percent Dalit respondents have been using wood for cooking (Table 25).

Table 25: Distribution of Respondents by Type of Fuel Used for Cooking, 2008

Type of Fuel	Brahmin/Chhetri		Dalit		Total	
	Cases	Percent	Cases	Percent	Cases	Percent
Bio-gas	1	1.4	-	-	1	1.0
Wood	70	95.9	29	100.0	99	97.0
Kerosene	2	2.7	-	-	2	2.0
Total	73	100.0	29	100.0	102	100.0

Source: Field survey, 2008

3.2.13 Participation in Social Activities

This study showed that the highest number of respondents engaged in social activities and lowest number of respondents didn't engage. 79.5 percent Brahmin/Chhetri and 41.4 percent Dalit respondents engage in social activities and 20.5 percent Brahmin/Chhetri and 58.6 percent Dalit respondents did not engage in social activities. Large number Brahmin/Chhetri respondents engage in social activities and large number Dalit respondents did not engage in social activities (Table 26).

Table 26: Distribution of Respondents by Engaged in Social Activities, 2008

Engaged	Brahmin/Chhetri		Dalit		Total	
	Cases	Percent	Cases	Percent	Cases	Percent
Yes	58	79.5	12	41.4	70	68.6
No	15	20.5	17	58.6	32	31.4
Total	73	100.0	29	100.0	102	100.0

Source: Field survey, 2008

3.3 Decision-making Power of Women

This part deals with women's status in terms of decision-making in different aspect of household as well as other activities. Decision regards cropping patterns, buying food products, selling surplus foods, buying and selling of livestock, types of fuel, family planning method, education

for children, types of dowry, pewa, income generating activities, family debt, borrowing and lending money, participation of social activities by the idea or interest of female.

3.3.1 Decision about Marriage

Marriage is one of the universal social institutions. The study shows that only 1.4 percent Brahmin/Chhetri and 24.1 percent Dalit respondents have own decision about marriage, 4.1 percent Brahmin/Chhetri and 27.6 percent Dalit respondents take relative decision and 94.5 percent Brahmin/Chhetri and 48.3 percent Dalit respondents take their parents decision about marriage. This study shows that population among respondents take decision about marriage in the interest of their parents (Table 27).

Table 27: Distribution of Respondents about Marriage, 2008

Decision Maker	Brahmin/Chhetri		Dalit		Total	
	Cases	Percent	Cases	Percent	Cases	Percent
Parent	69	94.5	14	48.3	83	81.4
Self	1	1.4	7	24.1	8	7.8
Relative	3	4.1	8	27.6	11	10.8
Total	73	100.0	29	100.0	102	100.0

Source: Field survey, 2008

3.3.2 Decision by control over Resources on Household

Husband and wife both equal role to control the household resources. More than female play the responsible to control internal thing to household. In this study showed that 35.6 percent Brahmin/Chhetri and 65.6 percent Dalit respondents take decision on control over resources by themselves. Dalit respondents take more decision to control over the resources than Brahmin/Chhetri respondents (Table 28).

Table 28: Distribution of Respondents Decision to control over Resources on HH, 2008

Decision Maker	Brahmin/Chhetri		Dalit		Total	
	Cases	Percent	Cases	Percent	Cases	Percent

Husband	14	19.2	4	13.8	18	17.6
Self	26	35.6	19	65.6	45	44.1
Both	19	26.1	3	10.3	22	21.6
Father in law	5	6.8	2	6.9	7	6.9
Mother in law	5	6.8	1	3.4	6	5.9
Son	4	5.5	-	-	4	3.9
Total	73	100.0	29	100.0	102	100.0

Source: Field survey, 2008

3.3.3 Decision making on cropping

Mostly females are engaged in agricultural activities. There is more involvement of female in agriculture decision-making by cropping patterns. More respondents take decision on cropping themselves, 21.9 percent Brahmin/Chhetri and 72.5 percent Dalit respondents take decision themselves. It shows that more Dalit respondents take decision on cropping by self than Brahmin/Chhetri respondents (Table 29).

Table 29: Distribution of Respondents by Decision on Cropping, 2008

Decision Maker	Brahmin/Chhetri		Dalit		Total	
	Cases	Percent	Cases	Percent	Cases	Percent
Husband	17	23.3	2	6.9	19	18.6
Self	16	21.9	21	72.5	37	36.3
Both	18	24.7	3	10.3	21	20.6
Father in law	12	16.4	2	6.9	14	13.7
Mother in law	5	6.8	1	3.4	6	5.9
Son	5	6.8	-	-	5	4.9
Total	73	100.0	29	100.0	102	100.0

Source: Field survey, 2008

3.3.4 Decision on Buying Food Product

Buying of food product is an important decision that has to be made in household. Majority of the respondents 63.0 percent Brahmin/Chhetri and 75.9 percent Dalit respondents bought food

products using their self-decision. It concluded that various Dalit respondents take decision by self than Brahmin/Chhetri respondents (Table 30).

Table 30: Distribution of Respondents by Decision on Buying Food Product, 2008

Decision Maker	Brahmin/Chhetri		Dalit		Total	
	Cases	Percent	Cases	Percent	Cases	Percent
Yes	46	63.0	22	75.9	68	66.7
No	27	37.0	7	24.1	34	33.3
Total	73	100.0	29	100.0	102	100.0

Source: Field survey, 2008

3.3.5 Decision on Selling of Surplus Food

This study showed that among 102 household, only 90.4 percent Brahmin/Chhetri and only 3.4 percent Dalit respondent take self-decision to sell surplus food of the household and 9.6 percent Brahmin/Chhetri and 96.6 percent Dalit respondent did not take self-decision to sell surplus. More Brahmin/Chhetri takes self-decision to sell surplus than Dalit respondent (Table 31).

Table 31: Distribution of Respondents by Decision on selling of surplus Food, 2008

Decision Maker	Brahmin/Chhetri		Dalit		Total	
	Cases	Percent	Cases	Percent	Cases	Percent
Yes	66	90.4	1	3.4	67	65.7
No	7	9.6	28	96.6	35	34.3
Total	73	100.0	29	100.0	102	100.0

Source: Field survey, 2008

3.3.6 Decision on Livestock Forming

This study found that decision on forming livestock; less percentage of Dalit respondents take decision on selling and buying livestock, 9.6 percent Brahmin/Chhetri and 13.9 percent Dalit respondents take self decision on livestock forming. It showed that both castes take less decision of livestock forming by self. Husband and wife jointly take more decision on livestock forming. Dalit respondents' take self-decision on livestock forming than Brahmin/Chhetri (Table 32).

Table 32: Distribution of Respondents by Decision on Livestock Forming, 2008

Decision Maker	Brahmin/Chhetri		Dalit		Total	
	Cases	Percent	Cases	Percent	Cases	Percent
Husband	10	13.7	7	24.1	17	16.7
Self	7	9.6	4	13.9	11	10.8
Both	29	39.7	11	37.9	40	39.2
Father in law	21	28.8	7	24.1	28	27.4
Son	6	8.2	-	-	6	5.9
Total	73	100.0	29	100.0	102	100.0

Source: Field survey, 2008

3.3.7 Decision in Household Purchase for Daily Needs

There were various women engaged in domestic work. In this study, out of 102 respondents 43.8 percent Brahmin/Chhetri and 72.5 percent Dalit respondents were take their own decision on household purchase for daily needs. Between two castes Dalit take more decision than Brahmin/Chhetri on household purchase for daily needs (Table 33).

Table 33: Distribution of Respondents by Decision on HH Purchase for Daily Needs, 2008

Decision Maker	Brahmin/Chhetri		Dalit		Total	
	Cases	Percent	Cases	Percent	Cases	Percent
Husband	10	13.7	6	20.6	16	15.7
Self	32	43.8	21	72.5	53	52.0
Both	27	37.0	2	6.9	29	28.4
Son	4	5.5	-	-	4	3.9
Total	73	100.0	29	100.0	102	100.0

Source: Field survey, 2008

3.3.8 Decision on Management of Household

The study has found that 37.0 percent Brahmin/Chhetri and 10.3 percent Dalit respondents take decision husband on management of household. Only 8.2 percent Brahmin/Chhetri respondents

take decision by themselves about management of household. 65.6 percent Dalit respondents take decision by themselves about management of household. 17.8 percent Brahmin/Chhetri respondents and 6.9 percent Dalit respondents take decision of their and husband jointly, Brahmin/Chhetri respondents take more decision of their and husband jointly than Dalit. More Dalit respondents take self-decision than Brahmin/Chhetri respondents in household management (Table 34).

Table 34: Distribution of Respondents by Decision on Management of Household, 2008

Decision Maker	Brahmin/Chhetri		Dalit		Total	
	Cases	Percent	Cases	Percent	Cases	Percent
Husband	27	37.0	3	10.3	30	29.4
Self	6	8.2	19	65.6	25	24.5
Both	13	17.8	2	6.9	15	14.7
Father in law	18	24.7	3	10.4	21	20.6
Mother in law	4	5.5	1	3.4	5	4.9
Son	5	6.8	1	3.4	6	5.9
Total	73	100.0	29	100.0	102	100.0

Source: Field survey, 2008

3.3.9 Decision for Own Health Care

It was found that respondents take care to health by self or own decision and husband. Many respondents by both take decision for health care. Among 102 respondents 16.4 percent Brahmin/Chhetri and 51.7 percent Dalit respondents take decision on own health care themselves. Between two groups Dalit respondents take decision on own health care themselves. In Brahmin/Chhetri respondents take more decision of their and husband jointly than Dalit (Table 35).

Table 35: Distribution of Respondents by Decision for Own Health Care, 2008

Decision Maker	Brahmin/Chhetri		Dalit		Total	
	Cases	Percent	Cases	Percent	Cases	Percent

Husband	9	12.4	4	13.8	13	12.7
Self	12	16.4	15	51.7	27	26.5
Both	37	50.7	10	34.5	47	46.1
Son	15	20.5	-	-	15	14.7
Total	73	100.0	29	100.0	102	100.0

Source: Field survey, 2008

3.3.10 Decision on Participating Social Activities

There are restricted to take part in social activities. In our society females are bounded with in traditional social structure, so fewer people to take decision on social participation themselves. 38.6 percent of respondents took decision on participating in social activities in co-operation with their husband and 50 percent of respondents make decision by themselves (Table 36).

Table 36: Distribution of Respondents by Decision on Participating Social Activities, 2008

Decision Maker	Brahmin/Chhetri		Dalit		Total	
	Cases	Percent	Cases	Percent	Cases	Percent
Husband	8	13.8	-	-	8	11.4
Self	23	39.7	12	100.0	35	50.0
Both	27	46.5	-	-	27	38.6
Total	58	100.0	100.0	100.0	70	100.0

Source: Field survey, 2008

3.3.11 Decision on Family Debt

Most of women engaged in household chores and they spend more time for these activities than male. Only 8.2 percent Brahmin/Chhetri respondents take their own decision on family debt, 45.3 percent respondents take decision of their and husband jointly. Only 10.3 percent Dalit respondents take their own decision on family debt, 55.2 percent of respondents take decision of their and husband jointly (Table 37).

Table 37: Distribution of Decision on Family Debt, 2008

Decision Maker	Brahmin/Chhetri		Dalit		Total	
	Cases	Percent	Cases	Percent	Cases	Percent
Husband	23	31.5	8	27.6	31	30.4
Self	6	8.2	3	10.3	9	8.8
Both	33	45.3	16	55.2	49	48.1
Father in Law	6	8.2	2	6.9	8	7.8
Son	5	6.8	-	-	5	4.9
Total	73	100.0	29	100.0	102	100.0

Source: Field survey, 2008

3.3.10 Decision on Formal or Non-formal Education

In this study, most of respondents were illiterate low percent respondents have passed certificate level, then none of them studied Bachelor and above. 21.1 percent Brahmin/Chhetri and 71.4 percent Dalit respondents take their own decision on education, 49.1 percent Brahmin/Chhetri and 28.6 percent Dalit respondents take parent decision on education (Table 3).

Table 38: Distribution of Respondents by Decision on Formal or Non-formal Education, 2008

Decision Maker	Brahmin/Chhetri		Dalit		Total	
	Cases	Percent	Cases	Percent	Cases	Percent
Parent	28	49.1	4	28.6	32	45.1
Self	12	21.1	10	71.4	22	31.0
Husband	17	29.8	-	-	17	23.9
Total	57	100.0	14	100.0	71	100.0

Source: Field survey, 2008

3.4 Miscellaneous Decision Making

3.4.1 Decision about Dowry

The study showed that 76 respondents out of 102 have given dowry during marriage. 26 respondents were not used to dowry, 98.4 percent Brahmin/Chhetri respondents took decision on dowry with their parents and 1.6 percent Brahmin/Chhetri respondents took decision by their relatives. 66.7 percent Dalit respondents took decision on dowry with their parents, 13.3 percent

respondents took decision by themselves and 20.0 percent respondents took decision by their relatives (Table 39).

Table 39: Distribution of Respondents by Decision on Type of Dowry Used, 2008

Decision Maker	Brahmin/Chhetri		Dalit		Total	
	Cases	Percent	Cases	Percent	Cases	Percent
Parent	60	98.4	10	66.7	70	92.1
Self	-	-	2	13.3	2	2.6
Relatives	1	1.6	3	20.0	4	5.3
Total	61	100.0	15	100.0	76	100.0

Source: Field survey, 2008

3.4.2 Decision on Using Type of Fuel for Cooking Food

The study showed that most of the female took decision on type of fuel for cooking food. There was few participation of male to make decision about it. 47.9 percent Brahmin/Chhetri respondents take decision by themselves, 24.7 percent of respondents take decision by husband and wife jointly and 72.5 percent Dalit respondents take decision by themselves, 17.3 percent of respondents take decision by husband and wife jointly about fuel (Table 40).

Table 40: Distribution of Respondents by Decision on Using Type of Fuel for Cooking Food, 2008

Decision Maker	Brahmin/Chhetri		Dalit		Total	
	Cases	Percent	Cases	Percent	Cases	Percent
Husband	11	15.1	1	3.4	12	11.8
Self	35	47.9	21	72.5	56	54.9
Both	18	24.7	5	17.3	23	22.5
Father in Law	5	6.8	1	3.4	6	5.9
Mother in law	4	5.5	1	3.4	5	4.9
Total	73	100	29	100.0	102	100.0

Source: Field survey, 2008

3.4.3 Decision on Selection of Family Size

It was found that, 12.9 percent Brahmin/Chhetri respondents take decision about selection of family size by themselves, 66.3 percent of respondents take decision by husband and wife jointly and 10 respondents were not selection of family size automatically (Table 41).

Table 41: Distribution of Respondents by Decision on Selection of Family Size, 2008

Decision Maker	Brahmin/Chhetri		Dalit		Total	
	Cases	Percent	Cases	Percent	Cases	Percent
Husband	15	21.4	4	18.2	19	20.7
Self	9	12.9	3	13.6	12	13.0
Both	46	65.7	15	68.2	61	66.3
Total	70	100.0	22	100.0	92	100.0

Source: Field survey, 2008

3.4.4 Decision on Using of Family Planning Method

It was found that 86 respondents were using family planning method. 8.5 percent Brahmin/Chhetri respondents make decision by themselves, 71.2 percent respondents make decision on using the family planning method by co-operation with their husband. 44.4 percent Dalit respondents make decision by themselves, 44.4 percent of respondents make decision on using the family planning method by co-operation with their husband. Dalit respondents were using family planning method than Brahmin/Chhetri respondents (Table 42).

Table 42: Distribution of Respondents by Decision on Using of Family Planning Method, 2008

Decision Maker	Brahmin/Chhetri		Dalit		Total	
	Cases	Percent	Cases	Percent	Cases	Percent
Husband	12	20.3	3	11.2	15	17.4
Self	5	8.5	12	44.4	17	19.8
Both	42	71.2	12	44.4	54	62.8
Total	59	100.0	27	100.0	86	100.0

Source: Field survey, 2008

3.4.5 Decision about Children Education

Father and mother both have equal responsibilities on children's education. This study, very low 8.2 percent Brahmin/Chhetri respondents take decision about children education by themselves, 69.9 percent Brahmin/Chhetri respondents take decision about children education co-operation with their husband. 31 percent Dalit respondents take decision about children education by themselves, 44.9 percent Dalit respondents take decision about children education co-operation with their husband (Table 43).

Table 43: Distribution of Respondents by Decision about Children Education, 2008

Decision Maker	Brahmin/Chhetri		Dalit		Total	
	Cases	Percent	Cases	Percent	Cases	Percent
Husband	16	21.9	7	24.1	23	22.6
Self	6	8.2	9	31.0	15	14.7
Both	51	69.9	13	44.9	64	62.7
Total	73	100.0	29	100.0	102	100.0

Source: Field survey, 2008

3.5 Decision making on Various Household and Socio-economic Activities by Education

3.5.1 Decision on Control over Resources on Household by Education

It was found that among illiterate respondents majority of respondents, 34.4 percent Brahmin/Chhetri and 58.7 percent Dalits respondents' take decision on control over resources on households by themselves. Among literate respondents majority of respondents 36.6 percent Brahmin/Chhetri and 75 percent Dalits respondents' take decision by themselves. This showed that illiterate and literate most of Dalit respondents' take decision on control over resources on households than Brahmin/Chhetri respondents' (Table 44).

Table 44: Distribution of Respondents by Decision on control over Resources on HH by Education, 2008

Characteristics	Decision Maker	Brahmin/Chhetri		Dalit		Total	
		Cases	Percent	Cases	Percent	Cases	Percent
Illiterate	Husband	6	18.8	2	11.8	8	16.3
	Self	11	34.4	10	58.7	21	42.9
	Both	10	31.3	2	11.8	12	24.5
	Father in law	2	6.2	2	11.8	4	8.2
	Mother in law	2	6.2	1	5.9	3	6.1
	Son	1	3.1	-	-	1	2.0
Literate	Husband	8	19.5	2	16.7	10	18.8
	Self	15	36.6	9	75.0	24	45.3
	Both	9	22.0	1	8.3	10	18.8
	Father in law	3	7.3	-	-	3	5.7
	Mother in law	3	7.3	-	-	3	5.7
	Son	3	7.3	-	-	3	5.7

Source: Field survey, 2008

3.5.2 Decision on Cropping by Education

The study showed that among illiterate respondents majority of respondents, 20.5 percent Brahmin/Chhetri and 63.2 percent Dalits respondents take decision on cropping by themselves. Among literate respondents majority of respondents, 23.5 percent Brahmin/Chhetri and 90 percent Dalits respondents take decision on cropping by themselves. This showed that illiterate and literate Dalits respondents take more decision than Brahmin/Chhetri (Table 45).

Table 45: Distribution of Respondents by Decision Cropping by Education, 2008

Characteristics	Decision Maker	Brahmin/Chhetri		Dalit		Total	
		Cases	Percent	Cases	Percent	Cases	Percent
Illiterate	Husband	10	25.6	2	10.5	12	20.7
	Self	8	20.5	12	63.2	20	34.5
	Both	10	25.6	2	10.5	12	20.7
	Father in law	7	17.9	2	10.5	9	15.5
	Mother in law	1	2.6	1	5.3	2	3.4
	Son	3	7.8	-	-	3	5.2
Literate	Husband	7	20.6	-	-	7	15.9
	Self	8	23.5	9	90.0	17	38.6
	Both	8	23.5	1	10.0	9	20.5
	Father in law	5	17.4	-	-	5	11.4
	Mother in law	4	11.8	-	-	4	9.1
	Son	2	5.9	-	-	2	4.5

Source: Field survey, 2008

3.5.3 Decision on Buying Food Product by Education

It was found that out of 31 illiterate respondents, 73.3 percent Dalits respondents and 56.2 percent Brahmin/Chhetri respondents take decision on buying food products by themselves. Among 71 literate respondents about 64.9 percent Brahmin/Chhetri respondents and 78.6 percent Dalits respondents take decision on buying food products. It indicates that between two groups illiterate and literate Dalit take more decision by them than Brahmin/Chhetri (Table 46).

Table 46: Distribution of Respondents by Decision on Buying Food Product by Education, 2008

Characteristics	Decision Maker	Brahmin/Chhetri		Dalit		Total	
		Cases	Percent	Cases	Percent	Cases	Percent
Illiterate	Yes	9	56.2	11	73.3	20	64.5
	No	7	43.8	4	26.7	11	35.5
Literate	Yes	37	64.9	11	78.6	48	67.6
	No	20	35.1	3	21.4	23	32.4

Source: Field survey, 2008

3.5.4 Decision on Selling Surplus Food by Education

The study showed that majority of illiterate 81.3 percent Brahmin/Chhetri respondents take decision on selling surplus food and 6.7 percent Dalits respondents take decision on selling surplus food. Among the literate respondents, 93 percent Brahmin/Chhetri respondents take decision on selling surplus food by them and Dalits respondents did not (Table 47).

Table 47: Distribution of Respondents by Decision on Selling Surplus Food by Education, 2008

Characteristics	Decision Maker	Brahmin/Chhetri		Dalit		Total	
		Cases	Percent	Cases	Percent	Cases	Percent
Illiterate	Yes	13	81.3	1	6.7	14	45.2
	No	3	18.7	14	93.3	17	54.8
Literate	Yes	53	93.0	-	-	53	74.6
	No	4	7.0	14	100.0	18	25.4

Source: Field survey, 2008

3.5.5 Decision on Households Purchases for Daily Needs

The study showed that among the illiterate respondent's 43.4 percent Brahmin/Chhetri respondents and 64.7 percent Dalits respondents take decision on households' purchases for daily needs by self. Among literate respondents, 44.1 percent Brahmin/Chhetri respondents and 83.3 percent Dalits respondents take decision on households' purchases for daily needs by themselves. This showed that illiterate and literate Dalits respondents take more decision than Brahmin/Chhetri (Table 48).

Table 48: Distribution of Respondents by Decision on HH Purchases for Daily Needs, 2008

Characteristics	Decision Maker	Brahmin/Chhetri		Dalit		Total	
		Cases	Percent	Cases	Percent	Cases	Percent
Illiterate	Husband	4	13.3	4	23.5	8	17.0
	Self	13	43.4	11	64.7	24	51.1
	Both	12	40.0	2	11.8	14	29.8
	Son	1	3.3	-	-	1	2.1
Literate	Husband	6	14.0	2	16.7	8	14.5
	Self	19	44.1	10	83.3	29	52.7
	Both	15	34.9	-	-	15	27.3
	Son	3	7.0	-	-	3	5.5

Source: Field survey, 2008

3.5.6 Decision on Livestock Forming by Education

It was found that out of illiterate respondents 12.2 percent Brahmin/Chhetri respondents and 13.6 percent Dalits respondents take decision on livestock forming. Among literate respondents, 6.3 percent Brahmin/Chhetri respondents and 14.3 percent Dalits respondents take decision on livestock forming. It indicates that between two groups illiterate and literate Dalit take more decision by them than Brahmin/Chhetri (Table 49).

Table 49: Distribution of Respondents by Decision on Livestock Forming by Education, 2008

Characteristics	Decision Maker	Brahmin/Chhetri		Dalit		Total	
		Cases	Percent	Cases	Percent	Cases	Percent
Illiterate	Husband	7	17.1	5	22.7	12	19.0
	Self	5	12.2	3	13.6	8	12.7
	Both	17	41.5	8	36.4	25	39.7
	Father in law	10	24.3	6	27.3	16	25.4
	Son	2	4.9	-	-	2	3.2
Literate	Husband	3	9.4	2	28.5	5	12.8
	Self	2	6.3	1	14.3	3	7.7
	Both	12	37.5	3	42.9	15	38.4
	Father in law	11	34.3	1	14.3	12	30.8
	Son	4	12.5	-	-	4	10.3

Source: Field survey, 2008

3.5.7 Decision on Management of Households by Education

It was found that 17.9 percent Brahmin/Chhetri and 56.3 percent Dalits illiterate respondents make self-decisions on management of households. On the other hand, only 2.2 percent Brahmin/Chhetri and 76.9 percent Dalits illiterate respondents make self-decisions on management of households. This showed that among groups illiterate and literate Dalits make more decision than Brahmin/Chhetri respondents (Table 50).

Table 50: Distribution of Respondents by Decision on Management of HH by Education, 2008

Characteristics	Decision Maker	Brahmin/Chhetri		Dalit		Total	
		Cases	Percent	Cases	Percent	Cases	Percent
Illiterate	Husband	10	35.7	2	12.4	12	27.3
	Self	5	17.9	9	56.3	14	31.8
	Both	5	17.9	1	6.3	6	13.6
	Father in law	6	21.4	2	12.4	8	18.2
	Mother in law	1	3.6	1	6.3	2	4.5
	Son	1	3.6	1	6.3	2	4.5
Literate	Husband	17	37.8	1	7.7	18	31.0
	Self	1	2.2	10	76.9	11	19.0
	Both	8	17.8	1	7.7	9	15.5
	Father in law	12	26.6	1	7.7	13	22.4
	Mother in law	5	6.7	-	-	5	5.2
	Son	4	8.9	-	-	4	6.9

Source: Field survey, 2008

3.5.8 Decision on Using Type of Fuel by Education

Almost 46.9 percent Brahmin/Chhetri and 66.6 percent Dalits illiterate respondents make self decisions on type of fuel. On the other hand, 48.8 percent Brahmin/Chhetri and 81.8 percent Dalits literate respondents make self decisions on type of fuel. 21.9 percent Brahmin/Chhetri and 16.6 percent Dalits illiterate respondents make decisions husband and her jointly on type of fuel. 26.8 percent Brahmin/Chhetri and 18.2 percent Dalits literate respondents make decisions husband and her jointly on type of fuel. This showed that among two groups illiterate and literate Dalits make more decisions than Brahmin/Chhetri respondents on type of fuel and illiterate and literate Brahmin/Chhetri respondents make decisions husband and her jointly on type of fuel (Table 51).

Table 51: Distribution of Respondents by Decision on Using Type of Fuel by Education, 2008

Characteristics	Decision Maker	Brahmin/Chhetri		Dalit		Total	
		Cases	Percent	Cases	Percent	Cases	Percent
Illiterate	Husband	5	15.6	1	5.6	6	12.0
	Self	15	46.9	12	66.6	27	54.0
	Both	7	21.9	3	16.6	10	20.0
	Father in law	2	6.2	1	5.6	3	6.0
	Mother in law	3	9.4	1	5.6	4	8.0
Literate	Husband	6	14.6	-	-	6	11.5
	Self	20	48.8	9	81.8	29	55.8
	Both	11	26.8	2	18.2	13	25.0
	Father in law	3	7.3	-	-	3	5.8
	Mother in law	1	2.5	-	-	1	1.9

Source: Field survey, 2008

3.5.9 Decision on Using Family Planning Method by Education

The study showed that, among illiterate respondents, 54.6 percent Dalits and 4.5 percent Brahmin/Chhetri take decision by themselves on using family planning method. Among literate respondents, 37.5 percent Dalits and 10.8 percent Brahmin/Chhetri take decision by themselves on using family planning method. It concludes that the education play important role in taking decision on using family planning method. Illiterate and literate Dalit take decision by them on using family planning method (Table 52).

Table 52: Distribution of Respondents by Decision on Using FP Method by Education, 2008

Characteristics	Decision Maker	Brahmin/Chhetri		Dalit		Total	
		Cases	Percent	Cases	Percent	Cases	Percent
Illiterate	Husband	4	18.2	1	9.1	5	15.2
	Self	1	4.5	6	54.6	7	21.2
	Both	17	77.3	4	36.4	21	63.6
Literate	Husband	8	21.6	2	12.5	10	18.9
	Self	4	10.8	6	37.5	10	18.9
	Both	25	67.6	8	50.0	33	62.2

Source: Field survey, 2008

3.5.10 Decision on Children Education by Education

The study showed that 30 percent Dalits and 11.8 percent Brahmin/Chhetri illiterate respondents take self-decisions on children education. Among literate respondents also 31.6 percent Dalits and 7.1 percent Brahmin/Chhetri respondents take self-decisions on children education. Illiterate and literate Dalit take decision by them on children education (Table 53).

Table 53: Distribution of Respondents by Decision on Children Education by Education, 2008

Characteristics	Decision Maker	Brahmin/Chhetri		Dalit		Total	
		Cases	Percent	Cases	Percent	Cases	Percent
Illiterate	Husband	2	11.8	2	20.0	4	14.8
	Self	2	11.8	3	30.0	5	18.5
	Both	13	76.4	5	50.0	18	66.7
Literate	Husband	14	25.0	5	26.3	19	25.3
	Self	4	7.1	6	31.6	10	13.3
	Both	38	67.9	8	42.1	46	61.4

Source: Field survey, 2008

3.6 Statistical Analysis

This deals with statistical analysis of the effects of social and economic variables on role of women in household decision-making. The social and economic variables included level of education. Simple correlation coefficient was used to find the relationship between socio-economic variables and household decision-making.

3.6.1 Decision on Control over Resources on Household by Education

The correlation coefficient between illiterate respondents and decision on control over resources on household is 0.729 and probable error of correlation coefficient is 0.129 ($r > 6PE_{(r)}$). There is no relationship between illiterate and decision on control over resources on household. Similarly, The correlation coefficient between literate respondents and decision on control over resources

on household is 0.916 and probable error of correlation coefficient is 0.044 ($r \pm 6PE_{(r)}$). There is relationship between literate and decision on control over resources on household.

According to caste wise, the correlation coefficient between Brahmin/Chhetri respondents and decision on control over resources on household is -0.565 and probable error of correlation coefficient is 0.188 ($r \pm 6PE_{(r)}$). There is no relationship between Brahmin/Chhetri and decision on control over resources on household. Similarly, The correlation coefficient between Dalit respondents and decision on control over resources on household is 0.978 and probable error of correlation coefficient is 0.013 ($r \pm 6PE_{(r)}$). There is relationship between literate and decision on control over resources on household.

3.6.2 Decision on Cropping by Education

The correlation coefficient between illiterate respondents and decision on cropping is 0.335 and probable error of correlation coefficient is 0.245 ($r \pm 6PE_{(r)}$). There is no relationship between illiterate and decision on cropping. Similarly, The correlation coefficient between literate respondents and decision on cropping is 0.533 and probable error of correlation coefficient is 0.197 ($r \pm 6PE_{(r)}$). There is no relationship between literate and decision on cropping.

According to caste wise, the correlation coefficient between Brahmin/Chhetri respondents and decision on cropping is 0.842 and probable error of correlation coefficient is 0.080 ($r \pm 6PE_{(r)}$). There is relationship between Brahmin/Chhetri and decision on cropping. Similarly, The correlation coefficient between Dalit respondents and decision on cropping is 0.993 and probable error of correlation coefficient is 0.004 ($r \pm 6PE_{(r)}$). There is relationship between literate and decision on cropping.

3.6.3 Decision on Buying Food Product by Education

The correlation coefficient between illiterate respondents and decision on buying food product is 1 and probable error of correlation coefficient is 0 ($r \pm 6PE_{(r)}$). There is relationship between illiterate and decision on buying food product. Similarly, The correlation coefficient between literate respondents and decision on buying food product is 1 and probable error of correlation

coefficient is 0 ($r \pm 6PE_{(r)}$). There is relationship between literate and decision on buying food product.

According to caste wise, the correlation coefficient between Brahmin/Chhetri respondents and decision on buying food product is 0.837 and probable error of correlation coefficient is 0.105 ($r \pm 6PE_{(r)}$). There is relationship between Brahmin/Chhetri and decision on buying food product. Similarly, The correlation coefficient between Dalit respondents and decision on buying food product is 1 and probable error of correlation coefficient is 0 ($r \pm 6PE_{(r)}$). There is relationship between literate and decision on buying food product.

3.6.4 Decision on Selling Surplus Food by Education

The correlation coefficient between illiterate respondents and decision on selling surplus food is -0.929 and probable error of correlation coefficient is 0.065 ($r \pm 6PE_{(r)}$). There is no relationship between illiterate and decision on selling surplus food. Similarly, The correlation coefficient between literate respondents and decision on selling surplus food is -1 and probable error of correlation coefficient is 0 ($r \pm 6PE_{(r)}$). There is no relationship between literate and decision on selling surplus food.

According to caste wise, the correlation coefficient between Brahmin/Chhetri respondents and decision on selling surplus food is 1 and probable error of correlation coefficient is 0 ($r \pm 6PE_{(r)}$). There is relationship between Brahmin/Chhetri and decision on selling surplus food. Similarly, The correlation coefficient between Dalit respondents and decision on selling surplus food is 1 and probable error of correlation coefficient is 0 ($r \pm 6PE_{(r)}$). There is relationship between literate and decision on selling surplus food.

3.6.5 Decision on Households Purchases for Daily Needs

The correlation coefficient between illiterate respondents and decision on households' purchases for daily needs is 0.653 and probable error of correlation coefficient is 0.194 ($r \pm 6PE_{(r)}$). There is no relationship between illiterate and decision on households' purchases for daily needs. Similarly, The correlation coefficient between literate respondents and decision on households'

purchases for daily needs is 0.736 and probable error of correlation coefficient is 0.155 ($r \pm 6PE_{(r)}$). There is no relationship between literate and decision on households' purchases for daily needs.

According to caste wise, the correlation coefficient between Brahmin/Chhetri respondents and decision on households' purchases for daily needs is 1 and probable error of correlation coefficient is 0 ($r \pm 6PE_{(r)}$). There is relationship between Brahmin/Chhetri and decision on households' purchases for daily needs. Similarly, The correlation coefficient between Dalit respondents and decision on households' purchases for daily needs is 1 and probable error of correlation coefficient is 0 ($r \pm 6PE_{(r)}$). There is relationship between literate and decision on households' purchases for daily needs.

3.6.6 Decision on Livestock Forming by Education

The correlation coefficient between illiterate respondents and decision on livestock forming is 0.940 and probable error of correlation coefficient is 0.035 ($r \pm 6PE_{(r)}$). There is relationship between illiterate and decision on livestock forming. Similarly, The correlation coefficient between literate respondents and decision on livestock forming is 0.009 and probable error of correlation coefficient is 0.302 ($r \pm 6PE_{(r)}$). There is no relationship between literate and decision on livestock forming.

According to caste wise, the correlation coefficient between Brahmin/Chhetri respondents and decision on livestock forming is 0.839 and probable error of correlation coefficient is 0.089 ($r \pm 6PE_{(r)}$). There is relationship between Brahmin/Chhetri and decision on livestock forming. Similarly, The correlation coefficient between Dalit respondents and decision on livestock forming is 0.753 and probable error of correlation coefficient is 0.146 ($r \pm 6PE_{(r)}$). There is no relationship between literate and decision on livestock forming

3.6.7 Decision on Management of Households by Education

The correlation coefficient between illiterate respondents and decision on management of households is 0.175 and probable error of correlation coefficient is 0.292 ($r \pm 6PE_{(r)}$). There is no

relationship between illiterate and decision on management of households. Similarly, The correlation coefficient between literate respondents and decision on management of households is -0.485 and probable error of correlation coefficient is 0.211 ($r \pm 6PE_{(r)}$). There is no relationship between literate and decision on management of households.

According to caste wise, the correlation coefficient between Brahmin/Chhetri respondents and decision on management of households is 0.775 and probable error of correlation coefficient is 0.110 ($r \pm 6PE_{(r)}$). There is relationship between Brahmin/Chhetri and decision on management of households. Similarly, The correlation coefficient between Dalit respondents and decision on management of households is 0.993 and probable error of correlation coefficient is 0.004 ($r \pm 6PE_{(r)}$). There is relationship between literate and decision on management of households

3.6.8 Decision on Using Type of Fuel by Education

The correlation coefficient between illiterate respondents and decision using type of fuel is 0.969 and probable error of correlation coefficient is 0.108 ($r \pm 6PE_{(r)}$). There is relationship between illiterate and decision on using type of fuel. Similarly, The correlation coefficient between literate respondents and decision on using type of fuel is 0.944 and probable error of correlation coefficient is 0.033 ($r \pm 6PE_{(r)}$). There is relationship between literate and decision on using type of fuel.

According to caste wise, the correlation coefficient between Brahmin/Chhetri respondents and decision on using type of fuel is 0.977 and probable error of correlation coefficient is 0.014 ($r \pm 6PE_{(r)}$). There is relationship between Brahmin/Chhetri and decision on using type of fuel. Similarly, The correlation coefficient between Dalit respondents and decision on using type of fuel is 0.999 and probable error of correlation coefficient is 0.006 ($r \pm 6PE_{(r)}$). There is relationship between literate and decision on using type of fuel.

3.6.9 Decision on Using Family Planning Method by Education

The correlation coefficient between illiterate respondents and decision on using family planning method is -0.062 and probable error of correlation coefficient is 0.388 ($r \pm 6PE_{(r)}$). There is no relationship between illiterate and decision on using family planning method. Similarly, The

correlation coefficient between literate respondents and decision on using family planning method is 0.626 and probable error of correlation coefficient is 0.237 ($r \pm 6PE_{(r)}$). There is no relationship between literate and decision on using family planning method.

According to caste wise, the correlation coefficient between Brahmin/Chhetri respondents and decision on using family planning method is 1 and probable error of correlation coefficient is 0 ($r \pm 6PE_{(r)}$). There is relationship between Brahmin/Chhetri and decision on using family planning method. Similarly, The correlation coefficient between Dalit respondents and decision on using family planning method is 0.737 and probable error of correlation coefficient is 0.178 ($r \pm 6PE_{(r)}$). There is no relationship between literate and decision on using family planning method.

3.6.10 Decision on Children Education by Education

The correlation coefficient between illiterate respondents and decision on children education is 0.945 and probable error of correlation coefficient is 0.042 ($r \pm 6PE_{(r)}$). There is relationship between illiterate and decision on children education. Similarly, The correlation coefficient between literate respondents and decision on children education is 0.812 and probable error of correlation coefficient is 0.133 ($r \pm 6PE_{(r)}$). There is relationship between literate and decision on children education.

According to caste wise, the correlation coefficient between Brahmin/Chhetri respondents and decision on children education is 0.958 and probable error of correlation coefficient is 0.032 ($r \pm 6PE_{(r)}$). There is relationship between Brahmin/Chhetri and decision on children education. Similarly, The correlation coefficient between Dalit respondents and decision on children education is 1 and probable error of correlation coefficient is 0 ($r \pm 6PE_{(r)}$). There is relationship between literate and decision on children education.

Table 54: Correlation coefficient

Variables	DOCOROH			DOC			DOBFP		
	r	PE _(r)	6PE _(r)	r	PE _(r)	6PE _(r)	r	PE _(r)	6PE _(r)
Illiterate	0.729	0.129	0.774	0.335	0.245	1.470	1	0	0

Literate	0.916	0.044	0.264	0.533	0.197	1.182	1	0	0
Brahmin/Chhetri	-0.565	0.188	1.128	0.842	0.080	0.480	0.837	0.105	0.630
Dalit	0.978	0.013	0.078	0.993	0.004	0.024	1	0	0

Variables	DOSSF			DOHPFDN			DOLF		
	r	PE _(r)	6PE _(r)	r	PE _(r)	6PE _(r)	r	PE _(r)	6PE _(r)
Illiterate	-0.929	0.065	0.390	0.653	0.194	1.164	0.940	0.035	0.210
Literate	-1	0	0	0.736	0.155	0.930	0.009	0.302	1.812
Brahmin/Chhetri	1	0	0	1	0	0	0.839	0.089	0.534
Dalit	1	0	0	1	0	0	0.753	0.146	0.876

Variables	DOMOH			DOUTOF			DOUFPM		
	r	PE _(r)	6PE _(r)	r	PE _(r)	6PE _(r)	r	PE _(r)	6PE _(r)
Illiterate	0.175	0.292	1.752	0.969	0.018	0.108	-0.062	0.388	2.328
Literate	-0.485	0.211	1.266	0.944	0.033	0.198	0.626	0.237	1.422
Brahmin/Chhetri	0.775	0.110	0.660	0.977	0.014	0.084	1	0	0
Dalit	0.993	0.004	0.024	0.999	0.001	0.006	0.737	0.178	1.068

Variables	DOCE		
	r	PE _(r)	6PE _(r)
Illiterate	0.945	0.042	0.252
Literate	0.812	0.133	0.798
Brahmin/Chhetri	0.958	0.032	0.192
Dalit	1	0	0

Legends:

DOCOROH = Decision on Control Over Resources on Households.

DOC = Decision on Cropping

DOBFP = Decision on Buying Food Products

DOSSF = Decision on Selling Surplus Food

DOHPFDN	=	Decision on Households Purchases for Daily Needs
DOLF	=	Decision on Livestock Forming
DOMOH	=	Decision on Management of Households
DOUTOF	=	Decision on Using Type of Fuel
DOUFPM	=	Decision on Using Family Planning Method
DOCE	=	Decision on Children Education

CHAPTER-IV: SUMMARY AND CONCLUSION

The purpose of this chapter is to summarize the major finding of the study related to women's decision-making power in household on Dhawa VDC of Gorkha district. This study analyzes the women's participation in household decision-making power in Dhawa VDC of Gorkha district. There were 846 households in study area among those 102 were taken as sampled Brahmin/Chhetri and Dalit households to collect information. This study has selected females using the purposive sampling method. It also includes conclusion of the study.

4.1 Summary of Findings

The study is mainly focused upon women's decision-making power in household as well as other social activities. The major findings of the study are as follows.

4.1.1 Demographic Characteristics

- Among the 102 sampled households the total population was 598, among which 294 are males and 304 are females.
- The sex ratio is 96.7.
- The majority of the respondents in age groups of 40-44 years in Brahmin/Chhetri and 30-34 years in Dalit.
- Out of the total female respondents age group 30-39 were found to be currently married and age group 40-49 were found to be widow.
- Among 102 female respondents, 94.5 percent Brahmin/Chhetri and 79.3 percent Dalits respondents were done arranged marriage and 5.5 Brahmin/Chhetri and 20.7 percent Dalits respondents were done love marriage.

- The mean age at marriage of Brahmin/ Chhetri respondents lies 15.3 years and Dalit respondents 17.5 years.
- An average Brahmin/Chhetri 20 years and Dalit respondents 18.6 years give birth of the first child.
- Majority of the all respondents are Hindu.
- All respondents were not faced any problem due to dowry and 90.5 percent respondents were used to consumable goods during marriage ceremony.
- Average Brahmin/Chhetri 8.2 years and Dalit respondents 2.7 years different between respondents and husband age.
- In this study, 71.2 percent Brahmin/Chhetri and 62.1 percent Dalit respondents were normal status.

4.1.2 Socio-economic Characteristics

- Among respondents, 21.9 percent Brahmin/Chhetri respondents and 51.7 percent Dalit respondents were illiterate.
- Out of total respondents, 76.7 percent Brahmin/Chhetri respondents and 89.7 percent Dalit respondents are engaged in agricultural activities.
- Majority of the respondents, 90.2 percent Brahmin/Chhetri and 82.8 percent Dalit respondents did not have land in their own name.
- Almost 13.7 percent Brahmin/Chhetri and 6.9 percent Dalit respondents land owner self name.
- Five types of animals were having their respondents.
- This study showed that 26.0 percent Brahmin/Chhetri and 34.5 percent Dalit respondents have animal 'PEWA'.
- Majority of the respondents, 1.4 percent Brahmin/Chhetri and 10.3 percent Dalit respondents do not have income.
- About 14 percent males and 28 percent females were illiterate in respondent's family.
- Among 598 people 3.4 percent males and 1 percent female were take Bachelor level and 23 percent female have attended under 5 education in respondent's family.
- Among two groups 13.7 percent Brahmin/Chhetri and 6.9 percent Dalits respondents were land owner.
- About 60.3 percent Brahmin/Chhetri and 20.7 percent Dalit respondents were joint family.

- Among 598 people 396 were currently married and 27 were widower/widow.
- A Main source of Brahmin/Chhetri respondents' family income is agriculture and Dalit respondents' family income is service.
- About 13.7 percent Brahmin/Chhetri respondents and 10.4 percent Dalit respondents were keep their family income with them.
- Only 8.2 percent Brahmin/Chhetri and 3.4 percent Dalit respondents have money 'PEWA'.
- About 60.3 percent Brahmin/Chhetri respondents were making their roof tin and 62.1 percent Dalit respondents were making their roof stone.
- 79.5 percent Brahmin/Chhetri respondents and 41.4 percent Dalit respondents were participating in social activities.
- All Dalit respondents (100%) and 95.9 percent Brahmin/Chhetri respondents have been using wood for cooking.

4.1.3 Women in Household Decision making Process

- Among 102 respondents, 94.5 percent Brahmin/Chhetri and 48.3 percent Dalit respondents were done marriage with parent's choice; only 1.4 percent Brahmin/Chhetri and 24.1 percent Dalit respondents were done marriage with their own choice.
- Out of all respondents, 35.6 percent Brahmin/Chhetri and 65.6 percent Dalit respondents' were take decision on control over resources on household by themselves.
- Majority of the respondents 21.9 percent Brahmin/Chhetri and 72.5 percent Dalit respondents' take decision on cropping by themselves.
- Majority of the respondents 63.0 percent Brahmin/Chhetri and 75.9 percent Dalit respondents take decision on buying food products by themselves.
- Majority of the respondents' 90.4 percent Brahmin/Chhetri take decision on selling product by themselves and only 3.4 percent Dalit respondents take decision on selling product by them.
- Only 9.6 percent Brahmin/Chhetri and 13.9 percent Dalit respondents take decision on livestock forming by themselves.
- Study has shown that 43.8 percent Brahmin/Chhetri and 72.5 percent Dalit respondents' take decision on household purchase for daily needs by themselves.

- Only 8.2 percent Brahmin/Chhetri and 65.5 percent Dalit respondents' were take decision about management of the household by themselves.
- Among two groups, 16.4 percent Brahmin/Chhetri and 51.7 percent Dalit respondents' take decision for own health care by themselves.
- Among respondents, 39.7 percent Brahmin/Chhetri and 100 percent Dalit respondents' take decision on participating social activities by themselves.
- Only 8.2 percent Brahmin/Chhetri and 10.3 percent Dalit respondents' take their own decision on family debt.
- Out of total respondents, 21.1 percent Brahmin/Chhetri and 71.4 percent Dalit respondents' take decision on formal or non-formal education by themselves.
- 13.3 percent Dalit respondents take their own decision on dowry.
- Out of total respondents, 47.9 percent Brahmin/Chhetri and 72.5 percent Dalit respondents take their own decision on using type of fuel for cooking food.
- Among 92 respondents, 12.9 percent Brahmin/Chhetri and 13.6 percent Dalit respondents take decision on selection of family size by themselves.
- Among 86 respondents, 8.5 percent Brahmin/Chhetri and 44.4 percent Dalit respondents take decision on using family planning method by themselves.
- Only 8.2 percent Brahmin/Chhetri and 31 percent Dalit respondents take decision on children education by themselves.
- Among illiterate respondents, 34.4 percent Brahmin/Chhetri and among literate, Brahmin/Chhetri respondents 58.7 percent take decision on control over resources on household by themselves.
- Majority of illiterate and literate Dalits respondents take more decision on cropping.
- Among illiterate respondents, 73.3 percent Dalit respondents and among literate, majority of respondents 78.6 percent Dalit take decision on buying food products.
- Among both illiterate and literate respondents Majority of Brahmin/Chhetri take decision on selling surplus products than Dalit.
- Majority of illiterate and literate Dalit respondents take decision on household purchase for daily needs than Brahmin/Chhetri respondents.
- Majority of illiterate and literate Dalit respondents take decision on livestock forming comparison to Brahmin/Chhetri.
- Majority of illiterate and literate Dalit respondents take decision on management of households by them than Brahmin/Chhetri.

- On the decision of using type of fuel, among two groups of illiterate and literate Dalit respondents take more decision by themselves than Brahmin/Chhetri.
- Among both illiterate and literate respondents of Dalit respondents take decision on using family planning method by themselves than Brahmin/Chhetri.
- Among both illiterate and literate respondents of Dalit respondents take more decision on children education by themselves than Brahmin/Chhetri.

4.2 Conclusion

This study has focused the women's decision-making power in household activities between Brahmin/Chhetri and Dalit. Among two groups, majority of Dalits respondents are illiterate than Brahmin/Chhetri respondents. Large no. Of Brahmin/Chhetri respondents in age group 40-44 years and Dalit 30-34 years. Each Brahmin/Chhetri respondent's age at marriage was lies 15.3 years and Dalit 17.5 years. Both groups highest no. Of respondents done arranged marriage. Brahmin/Chhetri 20 years and Dalit respondent's 18.6 years give birth of first child. Age difference between husband and wife in Brahmin/Chhetri respondent's 8.2 years and Dalit respondent's 2.7 years. Literate and illiterate Brahmin/Chhetri respondents take decision on control over resources on household and selling surplus product. Majority of respondents are housewives followed by agricultural activities.

This study focused on education can influence women's decision-making or not. But result showed that only education can not change women all over status and their decision-making power, where there are several things are playing the role in our society. Social status of women in the study area such as their employment and economic status were found to be low. Besides domestic works, respondents are entirely involved in agriculture works but their decision maker's role is negligible in the family. Brahmin/Chhetri respondents were less participates in household decision in comparison to Dalit. Literate and illiterate Dalit respondent participation on social activities is closely related to decision making than Brahmin/Chhetri respondents. Education is related to job opportunities, which are help to freedom of social movement. Income level, control over resources and employment are related to decision-making power of Brahmin/Chhetri respondents is well than Dalit respondent. An average all the respondents have low socio-economic status and this lag behind in household decision-making.

This study has also proved that literate women use more family planning methods than illiterate women as well as women have much of the subordinate role than decision making in household. Further more, there is room to study in future in following topics. Cropping decision and livestock farming is less interested for educated women. Women have no decision power to purchase the household goods. Illiterate women have good household management skills than literate women.

REFERENCES CITED

- Acharya, M. 1987. *"The Status of Women in Nepal"*. Population Monograph of Nepal; Katmandu, Vol. 2(4): 135-142.
- _____ 1994. *The Statistical Profile of Nepalese Women: An Update in the Policy Content* Kathmandu: Institute for Integrated Development Studies: 1.
- _____ 1997. *"Gender Equality and Empowerment of Women in Nepal"*. A Study Report Submitted to UNFPA, Kathmandu: UNFPA: 19.
- _____ 2003. *"Efforts at Proportion of Women in Nepal"*. A Report in Co-operation with Friedrich-Ebert-Stiftung; Kathmandu: Tanka Prasad Achrya Memorial Foundation/FES: 47.
- _____ and L. Bennett, 1982. *Women and Subsistence Sector, Economic Participation and Household Decision Making in Nepal*. World Bank Staff Working Paper 526USA: World Bank: 34-46.
- Acharya, S., 2004. *Democracy Gender Equality and Women's Literacy Experience form Nepal*; Kathmandu: UNESCO.
- Ahooja-Patel, Krishna, 1998. *Another Development with Women Development Dialogue*. A Journal of International Co-operation Published 1982:1-28.
- Asian Development Bank, 1999. *Women in Nepal*, Kathmandu: Program Development West of Office of Environment and Social Development.
- Beyond Beijing Committee, 2004. *Nepal Beijing and Beyond-Beijing +10 NGO Country Report 2004*, Lalitpur: BBC.
- CREHPA, 2007. *The Influence of Male Partners in Pregnancy Decision-Making and Outcomes in Nepal*; Kathmandu: CREHPA.

- Dixon, R., 1978. *Rural Women at Work: Strategies for Development in South Asia*, Baltimore: Johns Hopkins University Press.
- Forum of Women Legal and Development, 2003. *Special Measure for Women and their Impact* Kathmandu: FWLD.
- Ghimire, Durga, 1997. *Women and Development*, Volume-II (2), CEDA, TU, Kathmandu: 47-59.
- Hachhethu, K. and Shrestha, I., K. 2002. *Women and Governance- Re imaging State from a Gender Perspective Nepal*; Kathmandu: Shtriishakti.
- Jejeebhoy, S.J. 1999. "Women's Autonomy in Rural India: Its Dimensions, Determinants, and the Influence of Context"
- Kaur, Santnam, 1987. *Women in Rural Development: A Case Study* Mittal, Delhi: 120.
- Limbu, L., 1997. *The Status of Tamang Women and their Reproductive Behaviour: Nepal* Population Journal; Kathmandu: Population Association of Nepal: 87.
- Mason, K.O., 1986. "The status of Women: Conceptual and Methodological Issues in Demographic Studies" sociological forum, Vol.1 (2): 284-300.
- Ministry of Health and Population, 2007. *Nepal Population Report*: 157-158.
- Nepal Planning Commission, 1992. *Children and Women of Nepal*, A situation Analysis; Kathmandu: NPC/HMG/UNICEF.
- Pradhan Malla, Sapana, 2000. *Forum for Women, Law and Development: Baseline Study on Inheritance Right of Women*, Forum for Women, Law and Development.
- Shtriishakti, 1995. "*Women Development Democracy*". A Study of the Socio-Economic Characteristics in the Status of Women in Nepal.
- United Nations, 1994. *International Conference on Population and Development*; New York: United Nations.

APPENDICES

Questionnaire:

Women's Decision Making Power in Dhawa V.D.C, Gorkha district.
Date of interview: 2065/...../...../

A. Individual Information.

1. Name Of respondent's:-
2. Age:
3. Sex:
4. Marital status:
5. Cast / Ethnicity:
6. Religion:
7. Education Status:
9. Address: District: VDC:
Ward No: Tole:
10. Current Status:
Normal Conceived Postpartum amenorrhea

B. Household information:

1. Types of family
1. Extended 2.Nuclear 3. Stem
- 2.

S.N.	Name of the family member	Relation with household head	Sex	Age	Education	Marital status	Occupation
1							
2							
3							
4							
5							
6							
7							
8							
9							
10							

C. Marital Status

- 1 What was your age at marriage?
.....
- 2 What did you do at the time?
.....
- 3 what was your education at that time?
.....
- 4 What kind of marriage did you have?
 - 1. Arranged marriage 2. Love marriage
- 5. Who makes decision about marriage?
 - 1. Parent 2. Self 3. Relatives
- 6. Had you performed any dowry related activities during marriage ceremony?
 - 1 .Yes 2 .No
- 7. If yes, which types of dowries were used?
 - 1. Money 2. Consumable goods 3. Jewelry
- 8. Have you faced any problems due to dowry?
.....
- 9. Who makes decision about it?
.....
- 10. What is the age difference between you and your husband?
.....
- 11. Have you had any difficulties living post-marital residence near natal home?
 - 1. Yes 2. No
- 12. Who decides to control over resources on household?
(.....)

D House land information

- 1. What is the roof of your house made by?
 - 1. Grass 2. Stone 3. Tin
- 2. How much lands do your family using? In ropani
- 3. How much land do you have in your own name? In ropani
- 4. Who is land owner?
(.....)

E. Agriculture Information

- 1. Are you engaged in agricultural activities?
 - 1. Yes 2. No
- 2. Who makes decision in cropping?
(.....)
- 3. Did you buy any food products on your own decision?
 - 1. Yes 2. No
- 4. Did you sell any surplus food by your own decision?
 - 1. Yes 2. No

F. Livestock Information

1. What type of animal do you have and how many?
1. Cow(.....) 2.Ox(.....) 3.Buffalo(.....) 4.Goat(.....) 5.Pig(.....) 6 .Hen (.....)
2. Who decides in livestock forming?
(.....)
3. Do you have any animal "PEWA"?
1. Yes 2. No
4. If yes, which animal do you have & how many?
1. Cow (.....) 2.Ox (.....) 3. Buffalo (.....) 4.Goat (.....).
5. Pig (.....) 6.Hen (.....)

G. Information on Energy

- 1 Which type of fuel is mainly used for cooking in your family?
1. Bio- gas 2.Wood 3. Kerosene
2. Who decides the use of this energy?
(.....)

H. Birth Information

- 1 What was your age at the birth of first child?
.....
2. Have you given any live birth to a baby till now?
1. Yes 2. No
3. How many of them are living with you?
1. Sons (.....). 2. Daughters (.....)
4. Are any of your own children not living with you now?
1. Yes 2. No
5. Are any of your children died after having live birth?
1. Yes 2. No

I. Socio- Economic Information

1. Have you engaged in social activities?
1. Yes 2. No
2. If yes, in what kind of social institutions do you engaged?
1. Female committee 2.Political parties' 3.School management
3. Who makes decision in participating in such activities?
(.....)
4. Who decides for your own health care?
(.....)
5. Who makes decision in household purchases for daily needs?
(.....)
6. Who makes decision on management of household?
(.....)
7. What is the main source of your income?

1. Agricultural 2.Livestock 3.Service 4.Business 5.Daily wage
8. What is your family monthly income?
Rs.
9. Who keeps the household income?
.....
10. Have you any debt?
1. Yes 2.No
11. Who decides about it?
(.....)
12. Do you have money "PEWA"?
1. Yes 2.No
13. If yes, how many?
.....

J. Educational status

- 1 Are you taking any formal or non-formal education?
1. Yes 2. No.
2. If yes, who decided for this education?
(.....)
3. Do your children go to school?
1. Yes 2. No
4. Who decides your children go to school?
(.....)
5. If yes, how many children go to school?
1. Son (.....) 2. Daughter (.....)
6. If, daughters do not go, why?
.....
7. If, son do not go, why?
.....
8. Who makes decision about children education?
1. Husband 2.Self

K. Information to family planning

1. Have you ever heard about family planning method?
1. Yes 2. No
2. If yes, from which source did you hear?
1. Friends 2.Husband 3. Media
3. Who decides upon the selection of family size?
1. Husband 2.Self 3 Both
4. Who decides about family planning use?
1. Husband 2.Self 3 Both
5. Did you face any side effect and reproductive health problem due to family planning?
1. Yes 2. No
6. If yes, did you consult doctor?
1 .Yes 2 .No
7. Who decided to go for treatment?
1 .Husband 2 .Self 3 Both

