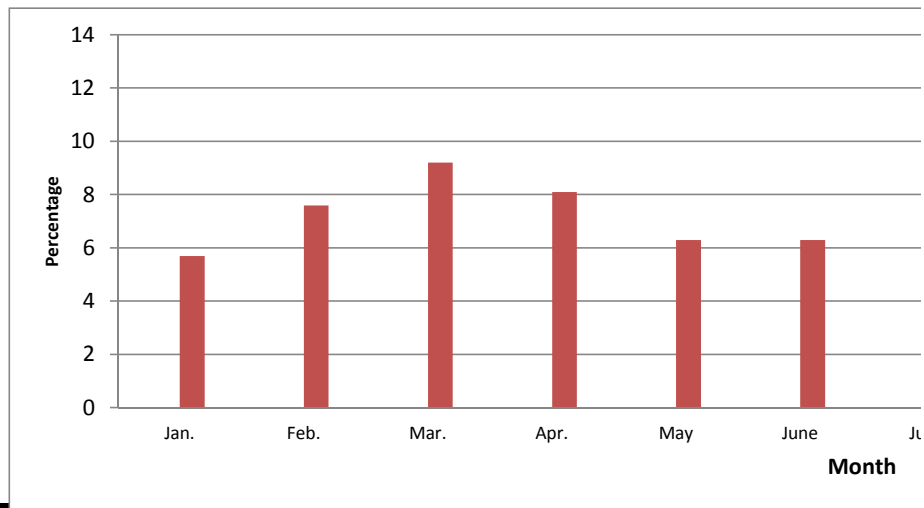


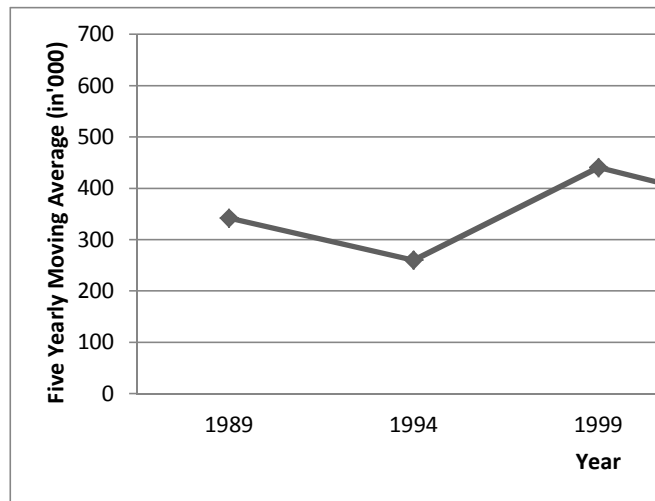
Month	Percentage
Jan.	5.7
Feb.	7.6
Mar.	9.2
Apr.	8.1
May	6.3
June	6.3
July	5.8
Aug.	9.7
Sept.	8.6
Oct.	13.2
Nov.	11.3
Dec.	8.2



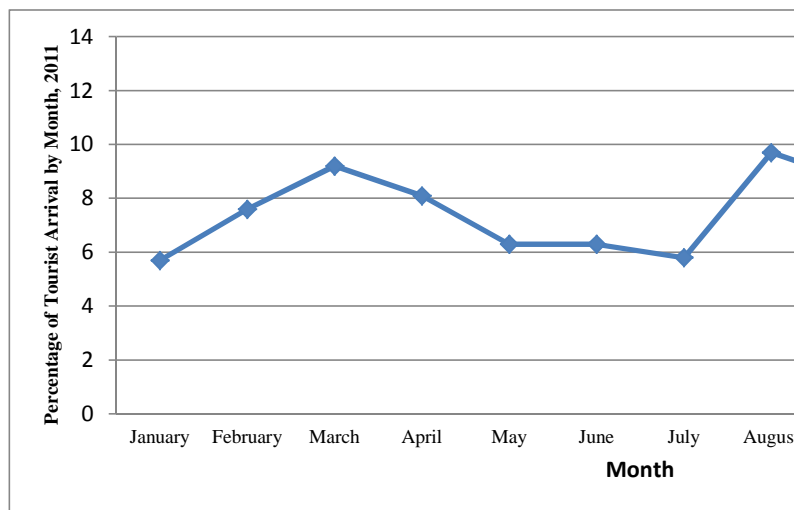
January	42622
February	56339
March	67565
April	59,751
May	46202
June	46115

July	42661
August	71398
September	63033
October	96996
November	83460
December	60073

Trend of Moving Average  
 1989 342.2  
 1994 260.4  
 1999 440.6  
 2004 351.2  
 2009 572.6



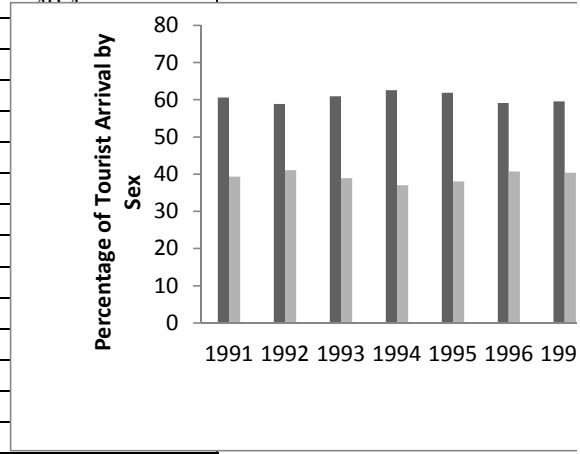
	<b>Percentage</b>
January	5.7
February	7.6
March	9.2
April	8.1
May	6.3
June	6.3
July	5.8
August	9.7
September	8.6
October	13.2
November	11.3
December	8.2






	Male	Female
1991	60.6	39.4

1992	58.9	41.1
1993	61	39
1994	62.6	37.1
1995	61.9	38.1
1996	59.2	40.8
1997	59.6	40.4
1998	57.8	
1999	58.2	
2000	57.6	
2001	59.1	
2002	63.4	
2003	60.4	
2004	66.3	
2005	68.7	
2006	57	
2007	55.2	
2008	57.4	
2009	56.5	
2010	60	
2011	47.8	

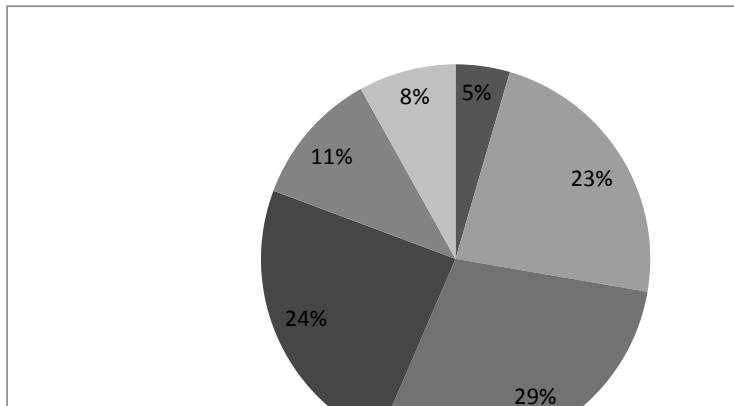


0-15  
4.5

16-30  
23.2

31-45  
28.8

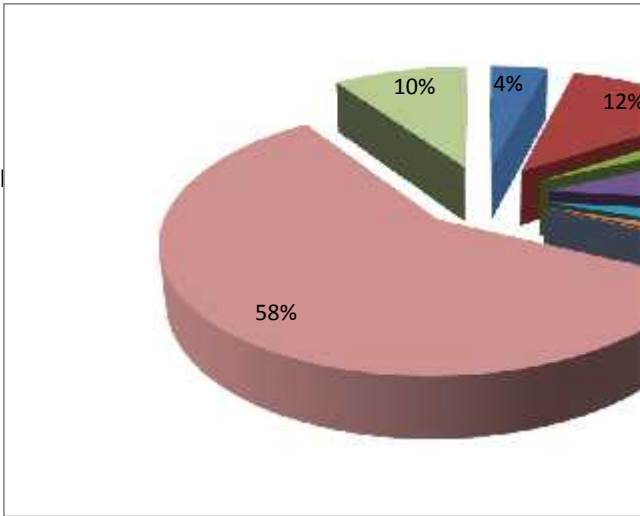
46-60  
24.2





Holiday Pleasure  
4.1

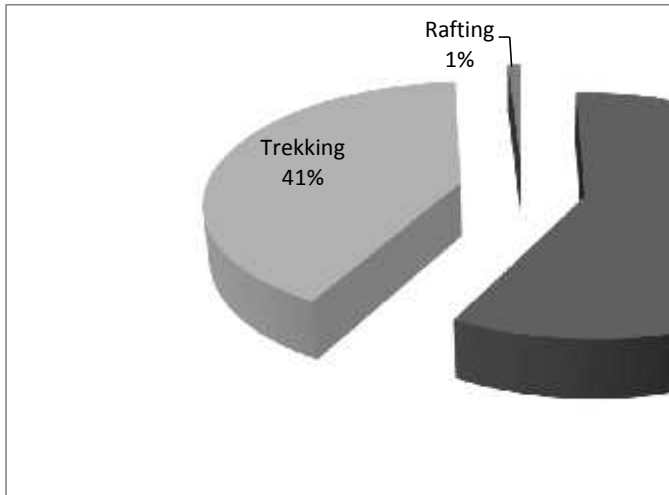
Tre



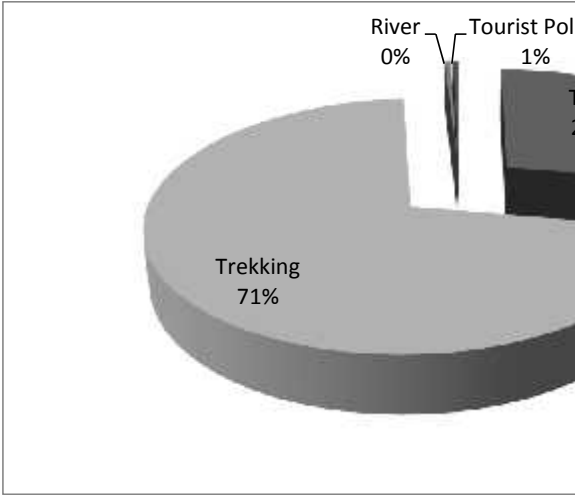
Travel  
1936

Trekking  
1378

Rafting  
33

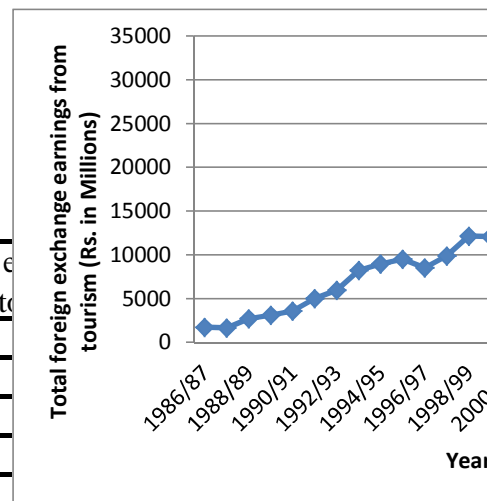


Tour	Trekking	River	Tourist Police
2835	7303	44	53



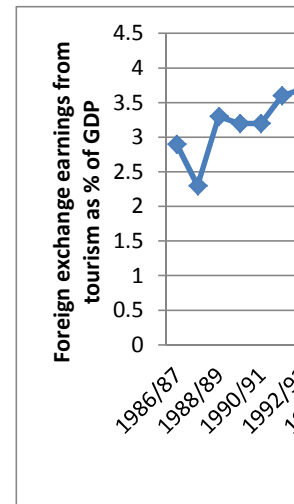


Year	Total foreign exchange earnings from tourism (Rs. in Millions)
1986/87	1740.5
1987/88	1675.7
1988/89	2735.3
1989/90	3121.2
1990/91	3587.6
1991/92	5016.9
1992/93	5966
1993/94	8251.7
1994/95	8973.2
1995/96	9521.2
1996/97	8523
1997/98	9881.6
1998/99	12167.8
1999/00	12073.9
2000/01	11717
2001/02	8654.3

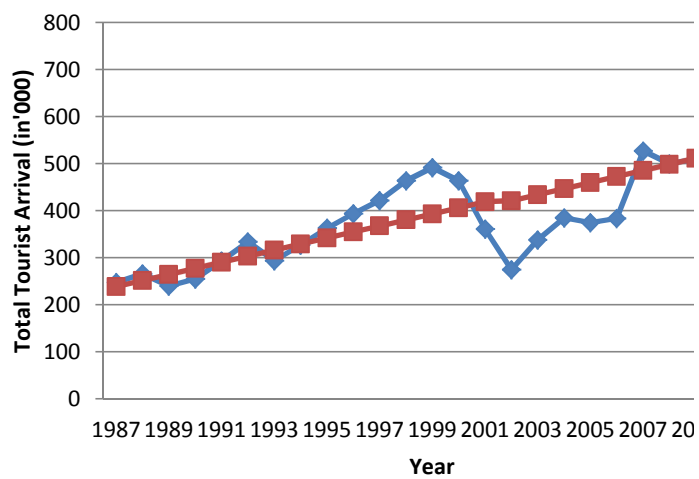


2002/03	11747.7
2003/04	18147.4
2004/05	10464
2005/06	9556
2006/07	10125
2007/08	18653
2008/09	27960
2009/10	28139
2010/11	28673

Year	Foreign exchange earnings from tourism as % of GDP
1986/87	2.9
1987/88	2.3
1988/89	3.3
1989/90	3.2
1990/91	3.2
1991/92	3.6
1992/93	3.7
1993/94	4.1
1994/95	4.1
1995/96	3.8
1996/97	3
1997/98	3.3
1998/99	3.6
1999/00	3.2
2000/01	2.7
2001/02	1.9
2002/03	2.4
2003/04	3.4
2004/05	1.8
2005/06	1.5
2006/07	1.4
2007/08	2.3
2008/09	2.9
2009/10	2.4
2010/11	1.8



	Total Tourist Arrival (in'000)	$Y_c = 393.4 + 12.874X$
1987	248	238.9
1988	266	251.8
1989	240	264.7
1990	255	277.5
1991	293	290.4
1992	334	303.3
1993	294	316.2
1994	327	329.1
1995	363	342
1996	394	354.9
1997	422	367.8
1998	464	
1999	492	
2000	464	
2001	361	
2002	275	
2003	338	
2004	385	
2005	375	
2006	384	
2007	527	
2008	500	
2009	510	
2010	603	
2011	736	537.2

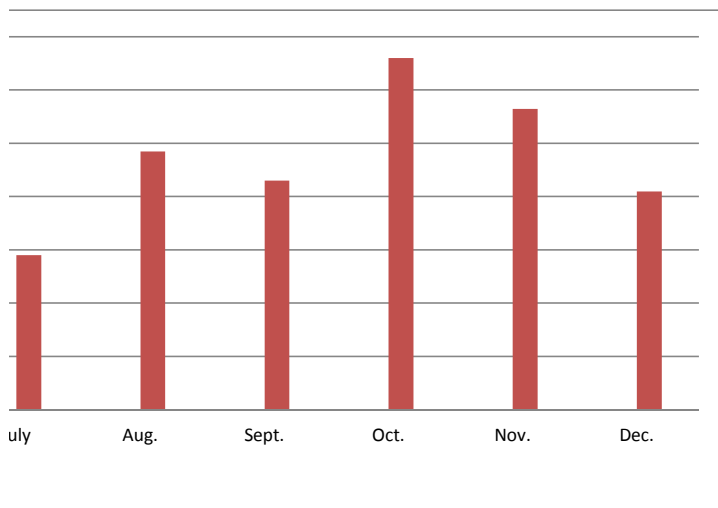


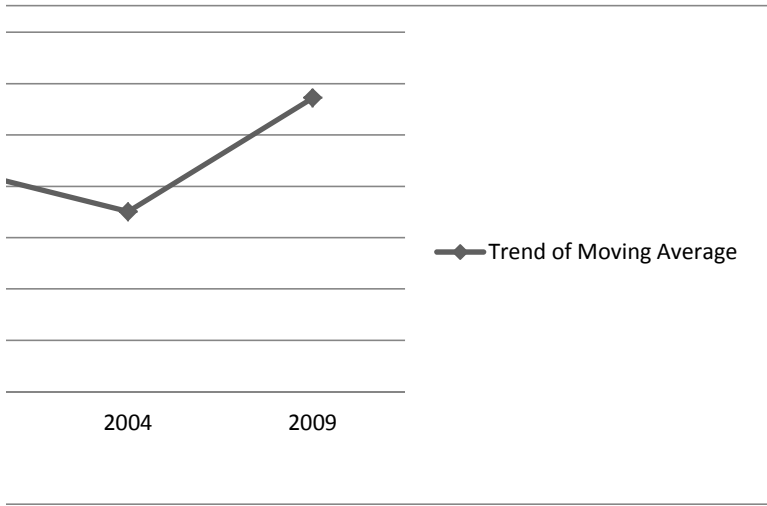
1740.5	58	22.7
1675.7	40.6	18.8
2735.3	65	28.2
3121.2	59.5	28.5
3587.6	47.1	23.5
5016.9	35.9	19.5
5966	34.5	26.7
8251.7	42.7	22.2
8973.2	50.8	21.8
9521.2	47.9	23.3
8523	37.6	13.7
9881.6	35.9	17.4
12167.8	34.1	18.5
12073.9	24.2	13
11717	21	12
8654.3	14.9	10.6
11747.7	23.1	15.2
18147.4	32.9	20.3
10464	17.5	12.2
9556	15.5	10.9
10125	16.1	10.7
18653	30.1	17.9
27960	40	22.8
28139	44.5	24.6
28673	36.3	22.5

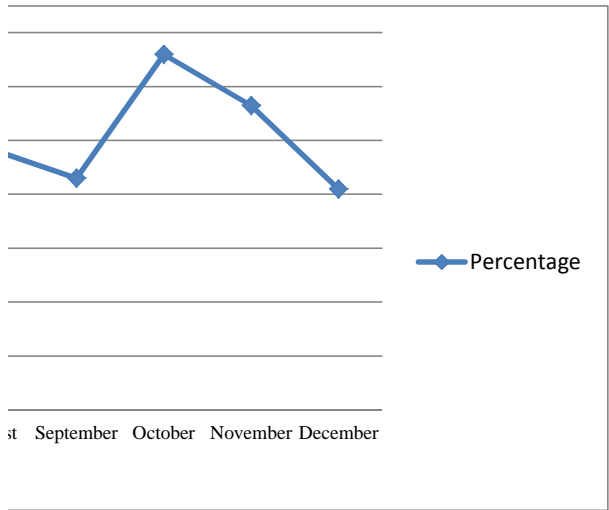
277072

905.7

477.5



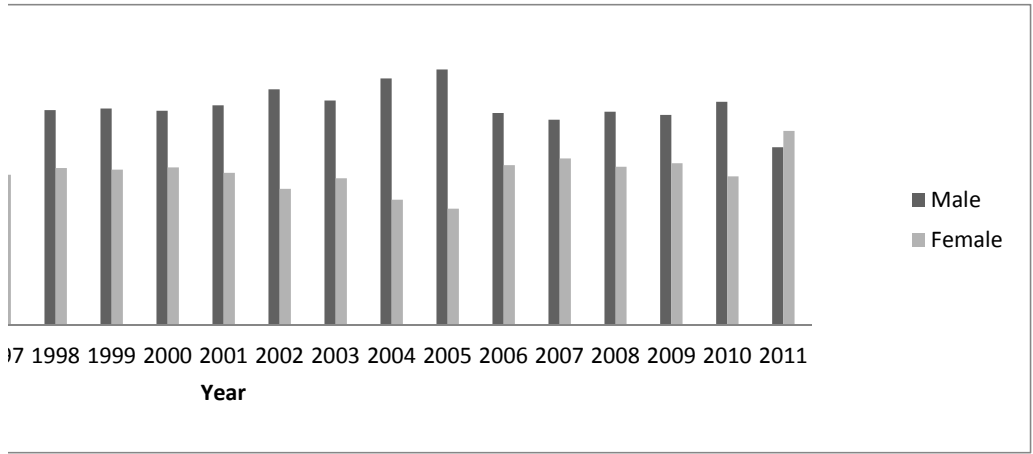




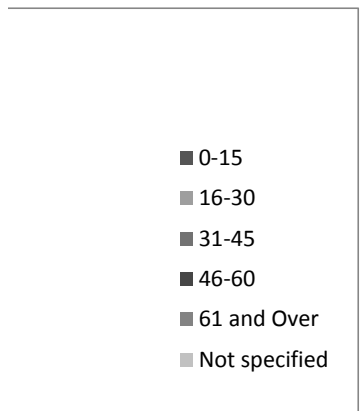


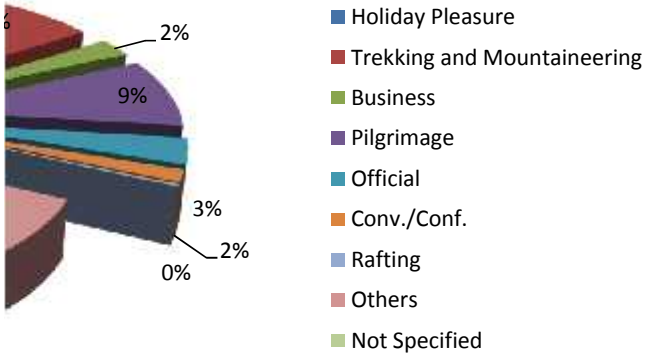




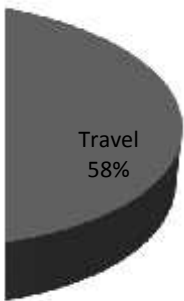


61 and Over 11.2      Not specified 8.1



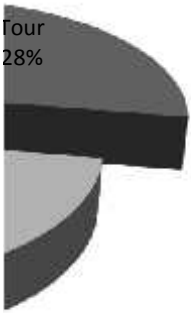


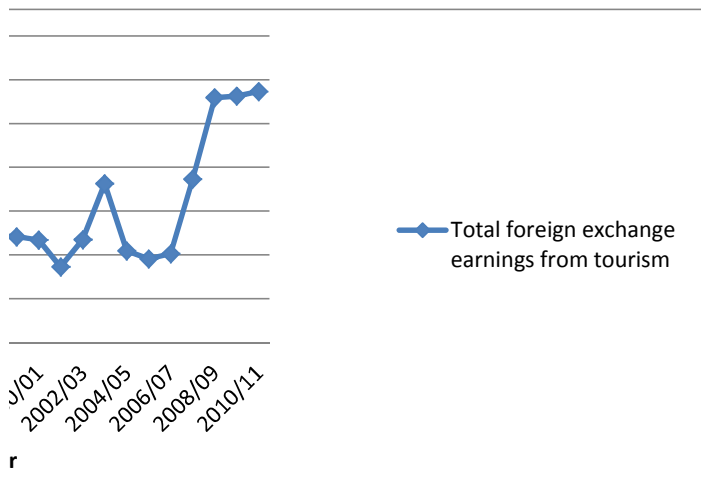
Not Specified  
9.6

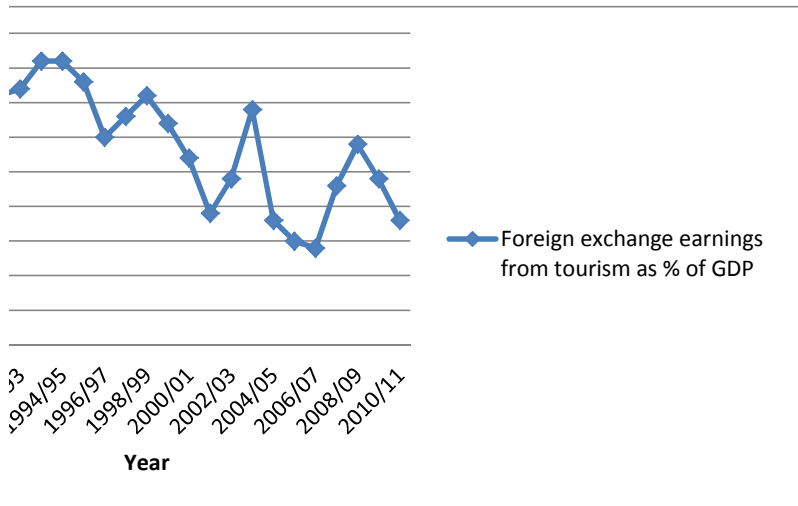


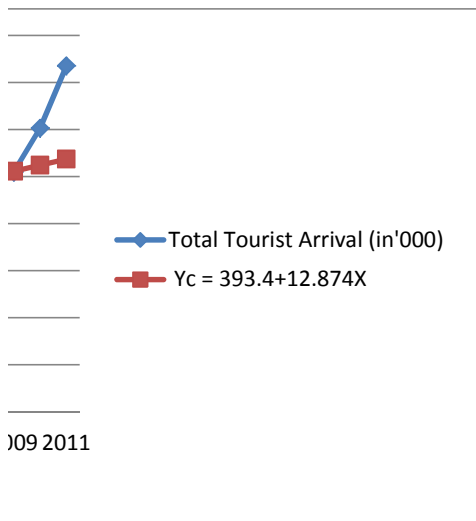
ice

Tour  
28%









26.6	2.9
18.2	2.3
24.5	3.3
23.3	3.2
21.8	3.2
20	3.6
17.6	3.7
18.9	4.1
17.3	4.1
21.4	3.8
17.6	3
15.2	3.3
15.9	3.6
8.8	3.2
7.4	2.7
6.3	1.9
8.2	2.4
11.4	3.4
6.1	1.8
4.6	1.5
4.5	1.4
6.7	2.3
6.5	2.9
3.1	2.4
7.5	1.8

339.4

71.8