

CHAPTER-I

INTRODUCTION

1.1 Background of the Study

Financial institutions are the backbone of the economic development of any country. A small financial institution is a vital contributor to the financial health of the national economy. The financial institutions are often fragile and susceptible to failure because of poor management, particularly in financial management. National development of any country depends upon the economic development of that country and economic development is supported by financial institution of that country. Financial infrastructure indicates the financial strength, position and environment of the institutions. The various branches of bank in towns and villages are offering various types of services. In past, they just used to accept deposits from the savers of money (surplus units of the society) and give loan to the users of money (deficit units of the society). Savers of the money are those units whose earning exceeds expenditure on real assets and user of money is those units whose expenditure on real assets exceeds their earnings.

Any institution offering deposits subjects to withdrawal on demand and making loans of a commercial or business nature is a bank. Banks constitute an important segment of financial infrastructure of any country. Bank came into existence mainly with the objective of collecting the idle fund, and mobilizing them to productive sector causing overall economic development. A bank is the financial departmental store, which render various financial services besides taking deposits and lending loans. Bank is the financial institution, which deals with money by accepting various types of financial services. In the modern economy, banks are to be not as the dealer of money but as the lender of the economic development. Banks are not just the storehouse of the country's wealth but also are to mobilize of the resources necessary for the economic development (Shrestha, 2004:2).

It cannot be denied that the issue of development rests upon the mobilization of resources and banks deals in the process in the process of canalizing the available resources in the needed sector. Commercial banks collect deposits from the public and the largest portion of the deposited money is utilized in disbursing loans and advances. The balance sheets of the

commercial banks reflect deposits constitute a major portion of the liabilities and loans and advances constitute a major portion of the assets. Similarly the profit of the bank depends upon the spread that it enjoys between the interest it receives from the borrowers and that to be paid to the borrowers. An average bank generates 60-70% of its revenues through its lending activities. The return that the bank enjoys of deposit mobilization through loans and advances is very attractive but they do not come free of cost and free of risk. There is risk inherent in lending portfolio. Banking sector is exposed to number of risk like interest rate risk, liquidity risk, credit risk, borrower's risk etc. such risks in excessive form had led many banks to go bankrupt in a number of countries.

Amongst the many risk that the bank faces one of the most critical is the borrower's risk- the risk of non-payment of the disbursed loans and advances. It is called Non-Performing assets or non performing loan (NPA/NPL). Failure to collect money disbursed may sometimes results in the bank's inability to make repayment of the money to the depositors and return to the shareholders. The risk involved is so high that it can bring bank to a verge of bankruptcy. The bankers have the responsibility of safeguarding the interest of the depositors, the shareholders and the society they are serving. If a bank behaves irresponsibly, the cost born by the economy is enormous.

Non – Performing assets can be defined as those assets that cannot be used productively. In other words, NPA is the outdated loan, and bad and doubtful debts. NPA could wreck banks' profitability both through a loss of interest income and write off the principle loan amount. To start with, performance in terms of profitability is a benchmark for any business enterprises including the banking industry. However, increasing non-performing assets have the direct impacts on banks' profitability, as legally banks are not allowed to book income on such accounts and at the same since banks are forced to make provision on such assets.

Performing assets are those that repay principle and interest to the banks. These assets constitute the primary sources of income to banks. Banks are willing to lend as much as possible. But they have to careful about the safety of such loans. Loans are risky assets, even though bank interest most of its resources in granting loans.

Banking system is volatile and sensitive sectors of national economy, which requires effective monitoring and efficient supervision. Smooth and effective regulation of banking activities is a

must for sustainable economic growth of a country. The regulatory agency should always be watchful of banking activities carried out by governmental and non-governmental banking and financial institution.

Now a day, the banks are taking different principles for granting loan (i.e. liquidity, profitability, safety & security, social responsibility etc.) but the NPA does not decline. An asset is classified as non-performing assets, if the borrower does not pay dues in the form of principle and interest. If any credit facilities or loan granted by bank to a borrower became non-performing. Then the bank will have to treat all the credit facilities or loan granted to that borrower as non-performing assets can be non-performing loan, non-banking assets, remaining non-performing loan, suspend interest, unutilized assets etc. The notion of non-performing loans or assets is often used as a proxy for asset quality of a particular bank or banking system. Although, there is no uniform definition of nonperforming assets, in many countries, including most G-10 countries, assets are considered to be non-performing when (a) principal or interest is due and unpaid for 90 days or more; (b) interest payment equal to 90 day or more have been capitalized, refinanced or rolled over. The bottom line in the international manuals concerning non-performing loan, seems to be that loans are good unless there is absolute certainty that a loan is not going to be repaid under existing arrangement. The SNA 1993 and other international statistics manuals are silent on defining non-performing loans.

Due to their central role in the economy, governments and central banks try their best to rescue banks from such situations. Hence, to protect the banks from such situation and protect depositors and shareholders money, central bank issues various directives and guidelines from time to time with modifications and amendments for the sound regulation of the banking system. All the banks have to abide by the rules and regulation issued by the central bank. Of the many directives, there are ten directives relating to the banking prudential regulation/norms to be followed by the banks.

1.1.1 Origin of banking

The evolution of banking industry had started a long time back, during ancient times. There was reference to the activities of moneychangers in temple of Jerusalem in the New Testament. In ancient Greece, the famous temple of Delphi and Olympia served as the great depositories for people's surplus funds and these were the centre of money lending transactions. However, as a public enterprise, banking made its first beginning around the middle of the twelfth century in

Italy. The Bank of Venice, founded in 1157 was supposed to be the most ancient bank. Following it were established the Bank of Barcelona and the bank of Geneva in 1401 and 1407 respectively. Subsequently Bank of Amsterdam set up in 1609, which was very popular then. The Bank of Venice and the Bank of Geneva continued to operate until the end of eighteenth century. With the expansion of commercial banking activities in Northern Europe, there sprang up a number of private banking houses in Europe and slowly it spread throughout the world.

However, the development of banking in Nepal is relatively recent. Like other countries, landlords, moneylenders, merchant, goldsmith etc are the ancient bankers of Nepal. Though establishment of banking industry was very recent, some crude banking operations were in practice even in the ancient time. In the Nepalese chronicle, it was recorded that the new era known as Nepal Sambat was introduced by Shankhadhar, a Sundra merchant of Kantipur in 880 A.D. after having paid all the outstanding debts in the country. This shows the basis of money lending practice in ancient Nepal. The establishment of “Tejarath Adda” during the year 1877 A.D. was the first step in institutional development of banking sectors in Nepal. Tejarath Adda did not collect deposit from public but granted loans to public against the collateral of bullions. Consequently, the major parts of the country remain untouched from these limited banking activities. The development of trade with India and other countries increase the necessity of the institutional banker, which can act more widely to enhance the trade and commerce and to touch the remote non-banking sector in the economy. Reviewing this situation, the “Udyog Parishad” was constituted in 1936 A.D. One year after its formulation, it formulated the “company Act” and “Nepal Bank Act” in 1937 A.D. Nepal bank limited was established under Nepal Bank Act in 1937 A.D. as a first commercial bank of bank of Nepal with 10 million authorized capital.

Modern banking practices emerged with the establishment of Nepal Bank Limited in 1934 A.D. However, the stand of Nepal Bank Limited alone in total monetary and financial sector was sufficient and satisfactory. Thus Nepal Rastra Bank was set up on 1956 A.D. (2013.01.14) as a central bank under Nepal Rastra Bank Act 1956 A.D. (2012 B.S.) Similarly on 1966(2022.10.10) Rastriya Banijya Bank was established as a fully government owned commercial bank. With the emergence of RBB, banking service spread to both the urban and rural areas but customers failed to have taste of Quality/competitive service because of excessive political and bureaucratic

Interference. For industrial development, Industrial Development Centre was set up in 1956 A.D. (2013 B.S.) which was converted to Nepal Industrial Development corporation (NIDC) in 1959 A.D. (2016 B.S.) Similarly Agricultural Development Bank (ADB) was established in 1976 A.D. (2024.10.07) with an objective to provide agricultural products so that agricultural productivity could be enhanced through introduction of modern agricultural techniques.

In 1990 A.D. after the restoration of democracy in Nepal, the government took the liberal policy in banking sector. As an open policy of the HMG's to get permission to invest in banking sector from private and foreign investor under Commercial bank Act 1975 A.D. (2013 B.S.), different private banks are getting permission to establish with the joint venture of other countries. Nowadays, there are 28 commercial banks operating in Nepali financial market

1.2 Commercial Bank in Nepal

Commercial bank deals with other people's money. They have to find ways of keeping their assets liquid so that they could meet the demand of their customers. In their anxiety to make profit, the banks can't afford to lock up their funds in assets, which are not easily realizable. The depositors' confidence could be secured only if the bank is able to meet the demand for cash promptly and fully.

According to Commercial Bank Act 1975 A.D. (2031 B.S.) defined, "A commercial bank is one which exchange money, deposits money, accepts deposits, grant loans and performs. Commercial banking functions which are not a bank meant for co-operative, agriculture, industries or for such specific purpose."

The main function of commercial bank is the accumulation to the temporarily idle money of general public for trade and commerce. Its main function are accepts deposits and grants loan, exchange, and purchase and discount bill for promissory Notes, exchange foreign currency, to provide loan, agency function, overseas trading services, information and other services. Commercial banks earn profit by proper mobilization of their resources .Many commercial banks have been established to provide a suitable service, according to their customers. The list of licensed commercial banks is as follows:-

List of licensed commercial bank in Nepal

1. Nepal Bank Limited.
2. Rastriya Binijya Bank.
3. NABIL Bank Ltd.
4. Nepal Investment Bank Ltd.
5. Standard Chartered Bank Nepal Ltd.
6. Himalayan Bank Ltd.
7. Nepal SBI Bank Ltd.
8. Nepal Bangladesh Bank Ltd.
9. Everest Bank Ltd.
10. Bank of Kathmandu Ltd.
11. Nepal Credit and Commerce Bank Ltd.
12. Lumbini Bank Ltd.
13. Nepal Industrial & Commercial Bank Ltd.
14. Machhapuchhre Bank Ltd.
15. Kumari Bank Ltd.
16. Laxmi Bank Ltd.
17. Siddhartha Bank Ltd.
18. Agriculture Development Bank Ltd.
19. Global Bank Ltd.
20. Citizens Bank International Ltd.
21. Prime Commercial Bank Ltd.
22. Bank of Asia Nepal Ltd.
23. Sunrise Bank Ltd.
24. Development Credit Bank Ltd.
25. NMB Bank Ltd.
26. KIST Bank Ltd.
27. Janta Bank Ltd.
28. Megha Bank Ltd.
29. Commarze and Trust Bank Ltd.
30. Century Bank Ltd.
31. Civil Bank Limited

32. Kumari Bank Limited

1.2.1 Brief Profile of RBB

Rastriya Banijya Bank (RBB) is fully government owned. And the largest commercial bank in Nepal. RBB was established on January 23, 1966(2022 magh 10 BS) under the RBB act. RBB provides various banking services to a wide range of customers in including banks, insurance companies, industrial trading house, airlines, hotels, and many others sectors.

RBB has Nepal's most extensive banking network with over 124 branches, through which it has been contributing to Nepal's economics development by providing banking services throughout the country

RBB has many correspondent arrangements with major international banks all over the world that facilitate trade finance, bank-originated personal fund transfer and interbank fund transfer via SWIFT. In a bid to promote remittance business, RBB works with Western union and international Money Express, two leading person to person funds transfer networks.

In additional RBB run various programmes i.e. banking with the poor, micro credit project for women etc. to enhance the living standard of people as per the gov.directives. As well, RBB actively delivers various government programs to people living in remote parts of country; these programs are intended to raise living standards.

Product and services

RBB's major commercial banking products and services included:

Deposits:

-) Current deposit
-) Saving deposit
-) Fixed deposit
-) Call deposit

Remittances:

-) Fax Transfer

-) Draft
-) Swift And Telegraphic Transfer
-) Mail transfer

Major lending products:

-) Fixed/working capital
-) Hire purchase
-) Overdraft
-) Construction
-) Consumer loan
-) Securities
-) Consortium
-) Trade finance
-) Trust receipt
-) Interbank lending

Capital structure & shareholders of RBB

Capital structure

<u>Capital</u>	<u>Amount (in NRS)</u>
▪ Authorized capital	Rs. 1.56 Billion
▪ Issued Capital	Rs. 1.17 Billion
▪ Paid-up Capital	Rs. 1.17 Billion

Shareholding

- | | |
|--------------|------|
| ▪ Government | 100% |
|--------------|------|

1.2.2 Brief profile of NABIL Bank Ltd.

NABIL Bank Ltd commenced its operation on 12th July 1984 as the first joint venture bank in Nepal. Dubai bank Ltd. was the first joint venture partner of NABIL. Currently NB (international) Ltd., Ireland is the foreign partner. NABIL bank Ltd had the official name Nepal Arab ltd. till 31st December 2001. NABIL is pioneer in introducing many innovative products and marketing concept in banking sector of Nepal with 19 branches across the Kingdom and over 170 reputed correspondent banks across the globe. Success of NABIL is a milestone in the

banking history of Nepal as it paved the way for the establishment of many commercial banks and financial institutions. NABIL has established itself as the bank of the first choice having following values-customer focused, result oriented, innovative, synergistic and professional, NABIL a large clientele base and supportive stakeholders and it has succeeded in positioning itself robustly in the market.

Product and Services of NABIL Bank Ltd.

Deposit:

-) Current deposit
-) Call deposit
-) Fixed deposit
-) Nabil Lok Bachat
-) Nabil Bal Bachat
-) Nabil Nari Bachat
-) Nabil Jestha Nagarik Bachat
-) Nabil Student Saving

Remittances:

- Western Union
- SWIFT Transfer
- E-Remittance (Qatar, Doha)
- Travelers Cheque
- Bank Draft
- Mail Transfer
- Anywhere Branch Banking
- Manager's Cheque

Major Lending Products

- Fixed/Working Capital
- Hire Purchases
- Mortgage Loan
- Housing Finance
- Auto Finance

- Project Finance
- Consortium/Syndication Loan

Capital Structure and Shareholding of NABIL Bank Ltd.

<u>Capital</u>	<u>Amount (in NRs)</u>
▪ Authorized Capital	1600 Million
▪ Issued Capital	965.75 Million
▪ Paid-up Capital	965.75 Million

Shareholding

▪ N.B. (Internationals) Ltd., Ireland	50.00%
▪ Nepalese Publics	30.00%
▪ Nepal Industrial Development Corporation	10.00%
▪ Rastriya Beema Sansthan	9.67%
▪ Nepal Stock Exchange Ltd	0.33%
Total	100%

1.3 Focus of the Study

Likewise, concerned matters are being presented as loan administration involves the creation of management of risk assets. The process of lending takes into consideration the people and system required for the evaluation and approval of loan requests, negotiations of term, documentation, disbursement, administration of outstanding loans and workouts, knowledge the process awareness of its strengths and weakness are important in setting objectives and goals for lending activities and for allocating available funds to various lending functions such as commercial, instatement and mortgage profits.

Increasing non-performing assets is one of the emerging problems of Nepalese commercial banks. This study mainly focused on non-performing loans or assets of selected commercial banks. It studies the ratios like loan and advances to total assets, loan and advances to total deposit, non-performing loans to total loans and advances, provision held to non-performing assets, which indicates the performance and provides comparable forum on non-performing assets. It also tries to shows the effects on profitability of commercial banks and related NRB directives, which is concerned towards the rendering loan and loan loss provision. The total NPA of Nepalese commercial banks are growing rapidly and it is the main cause to failure of bank. In

this study, the NPA of commercial banks are presented, analyzed, summarized and stated findings and recommendation

1.4 Statement of the Problem

Financial institution assists in the economic development of the country. Commercial bank being the financial institution plays significant role by collecting scattered surplus funds and deploy these fund in the productive sectors as investment. Economic development of the country is directly related to the volume of investment made and return obtained by the bank. Investment problem has become very serious for the least developed country like Nepal. This is due to lack of sound investment policy of commercial bank.

Nepalese commercial banks have not formulated their investment policy in an organized manner. The implementation of policy is not effective. The credit extended by the commercial bank to agriculture and industrial sector is not satisfactory to meet the present growing need. Nepotism and political pressure also effects the investment decision of the commercial banks. Granting loan against insufficient deposit, overvaluation of goods pledged, land and building mortgaged, risk-averting decision regarding loan recovery and negligence in recovery of overdue loan is some of the basic loopholes and the result of unsound investment policy sighted in the banks.

As the bank has to meet various challenges, this study will be helpful to the bank to identify and solve some of its weaknesses and problem. In every organization, the resources are scare and out of these scare resources, the objectives of the organizations are to be accomplished. Increase in revenue and control over expenditure significantly contributes to improve the profitability as well as the overall financial performance of an organization highly depends upon the best utilization of resources. Commercial bank's investment has been found to have lower productively due to the lack of supervision regarding whether there is proper utilization of their investment or not. Lack of farsightedness in policy formulation and absence of strong commitment towards it properly implemented. The rules and regulations are only the tools of NRB to supervise and monitor the financial institution. NRB need to monitor the concerned authorities in order to ensure that they are being followed.

Currently, the banking sector is facing various problems. One of them, the banking has been

becoming a victim of huge Non-Performing Assets (NPAs). NPAs are one of the serious problems faced by the commercial banks. Due to instable political condition, insecurity and other many factors, industries of Nepal are closing down. Lending carries credit risk, which arises from the failure of borrower to fulfill its contractual obligation during the course of transaction. It is well known fact that the bank and financial institution in Nepal face the problem of swelling non-performing assets (NPAs) and issue is becoming more and more unmanageable. The focus of the statement of the problem is the matter related to the NPAs of the commercial banks.

1.5 Objectives of the Study

Each and every of the research study posses a certain objective. Research without any specific objectives will be worthless. This research study entitled “NPA of commercial Bank” highlights to attempt the following objectives.

-) To study and evaluate the proportion of non-performing loan and the level of NPAs in total assets, total deposit and total lending in the selected commercial banks.
-) To compare and evaluate the relationship between loan and loan loss provision and the impact of non-performing assets in the performance in the commercial banks.
-) To present and examine the trend line of the non-performing assets, loan and advances, loan loss provision of selected commercial banks.
-) To provide suggestions for the further improvements of Non-performing assets of both the banks under study on the basis of study findings.

1.6 Research Questions

The success and prosperity of the bank heavily depends upon the successful implementation and investment is collected resources, which develops the economy of the country. Good investment policy of the bank has positive impact on economic development of the country and vice versa. Increasing non-performing loan followed by increasing loans and loan los as provision is one of the challenges faced by commercial banks in the present context. Proper loan provision and loan loss provision helps to get financial strength of the bank. The major research question on the basis of which the researcher makes their efforts are-

1. What are the present issues, latest information and data regarding non-performing loan and loan loss provision?
2. What is the real picture of the current non-performing assets to its stakeholders?
3. What about the non-performing assets of selected Nepalese commercial banks?
4. Try to find out and analyze the level of NPAs in total assets, total deposits and total lending of these selected banks.
5. Does Nepalese commercial banks maintain loan loss provision in accordance to NRB's directives or not.
6. Try to carry out the some of the weakness and problem of these two public and private banks.
7. What are the factor on which the profitable and performance of banks depends upon?

1.7 Limitations of the Study

The main limitation of this study is that, this study is mainly based on secondary data, published books, unpublished reports, public documents, articles of different writers, annual report of the selected banks and so on. The criteria of this study are non-performing assets (NPAs) of commercial banks. This research has the following limitations:

- 1 This study is concerned only with non-performing assets of Nepalese commercial banks. It does not consider other aspects of the banks.
- 2 Only audited balance sheet and profit and loss account have been used.
- 3 The researcher was handicapped by the time factor as well as economic factor. It means that the study report has been completed under allotted time and cost.
- 4 Up-to-date data and information related to the study have not been available from the concerned source.
- 5 Some approximate data have been used because of certain circumstances.
- 6 The ratio computation and selection process cannot be said to be perfect.
- 7 Only Nepalese commercial banks have been considered for the study and two banks have been selected as sample for the study. Hence, the findings may not be applicable to other banks (i.e. Developments banks, agriculture banks, finance companies and other companies of Nepal).
- 8 The period of the study is limited from fiscal year mid July 2005/06 to mid July 2009/10

(i.e. five year).

- 9 The study is basically based on secondary data, articles, publications, and journals of the respective banks, which may or may not provide exact vision of the field. Hence, the findings will be in accordance of the data personal judgment sampling is followed to draw the sample.

1.8 Organization of the Study

The present study is organized in such way that the stated objectives can easily be fulfilled. The structure of the study will try to analyze the study in a systematic way. The study report has presented the systematic presentation and finding of the study. The study report is designed in five chapters which are as follows;

Chapter – 1: Introduction

This chapter describes the basic concept and background of the study, introduction of commercial bank, brief introduction of sample bank (RBB and NABIL Bank limited), origin of bank in Nepal, statement of the problems, focus of the study, objectives of the study, significance of the study and limitations of the study. It is oriented for readers for reporting giving them the perspective they need to understand the detailed information about coming chapter.

Chapter – 2: Review of Literature

The second chapter of the study assures readers that they are familiar with important research that has been carried out in similar areas. This chapter includes conceptual review, review of related study, different thesis, and review of journals, articles and research studies published by various author.

Chapter – 3: Research Methodology

Research methodology refers to the various sequential steps to adopt by researcher in studying a problem with certain objectives in view. It describes various source of data related with the study and various tools techniques such as statistical and financial employed for presenting the data. This chapter includes research design, data collection, methods and analysis and research variables.

Chapter – 4: Presentation and Analysis of Data

This chapter is the main part of the research. This chapter analyses the data related with study and presents the finding of the study. Data processing, data analysis and interpretation are given in this chapter.

Chapter – 5: Summary, Conclusions and Recommendations

The last chapter contains the findings of whole study after which major conclusions and recommendations are provided. It also gives important suggestions to the concerned organization for the better improvement.

CHAPTER -II

REVIEW OF LITERATURE

2.1 Conceptual Review

2.1.1 Concept of performing loan

Performing loans are those loans that repay principle and interest timely to the bank from the cash flow it generates. In other word, performing loan are the productive assets that generate the some profits. Loans have the certain time period to return its principle with its interest. If anyone repays loan with its interest on time, is known as the performing loan. It is the most profitable assets of banks. Its helps to rapid growth of banking sector in this fast pace competitive age. Better performing loan were the symbol of success of banks. But many banks are suffering from the non repayment of loan amount.

2.1.2 Concept of Non-Performing Assets/Loan (NPAs/NPL)

One of the most emerging problems of the commercial banks is to the management of non-performing assets/loan. Due to the effects of non- performing assets/loan, many banks have already closed down. In this fast pace competitive age, the banks should have to operate taking in consideration that thing. Those loans, which don't repay principle and interest on time to the banks, are known as non-performing assets (NPAS). If any advances or credit facilities granted by bank to a borrower becomes non-performing. Then the bank will have to treat all the advance/credit facilities granted to that borrower as non-performing without having any regard to the fact that there may be still exist certain advance/credit facilities having performing status

NPAs have a different meaning that varies from country to country. In our country banks usually classify as nonperforming assets any commercial loans which are more than 90 days overdue and any consumer loans which are more than 180 days overdue. In some countries, it means that the loan is impaired, the payment are due but there are significant different among countries how many days a payment should be in arrears before past due status is triggered (Shrestha, 2004:14). According to current banking Act, the banks have to make provision for good loan, Sub-standard loan, doubtful and bad loan. After deducting the bad and doubtful debts

From the non-performing assets, net non-performing assets can be achieved.

$$\text{NPA} = (\text{NPL} + \text{NBA} + \text{RNPL} + \text{SI} + \text{UA})$$

Where;

NPA = Non-Performing Assets

NPL = Non-Performing Loan

NBA = Non- Banking Assets

RNPL= Remaining non performing loan

SI = Suspend Interest

UA= Unutilized Assets

Non-Performing loan (NPL) can be defined as the non-productive assets of the banks. In other words, it is the loan or bad and doubtful debts that doesn't repay timely. Generally the loan, which doesn't repay within three months, is known as non-performing loan. The loan amount that doesn't covered by the collateral after selling is known as non-banking assets (NBA). Non-performing assets also includes the suspend interest. It is the interest, which become receivable unutilized assets and those investments which don't generate any cash or incomes to the bank. The proper management of those assets to generate income is known as management of non-performing assets. Increasing NPAs is the emerging problem of the banks. We know that the some banks are closed down due to the uncontrollable NPAs. In USA, 1016 commercial banks were declared as unsuccessful (bankruptcy) from 1985 to 1990 and 27 banks from 1995 to 2001. However, Nepalese commercial banks face this type of problem till now but they have to take step towards it. For this, appropriate amount of bad and doubtful debts is made provision from their incomes/profits (Regmi, 2063:75).

2.1.3 Causes of occurring NPA

There are various causes to increase the NPAs. NPAs can be increased due to;

- 1 Lack of transparent and clear policy to mobilize the assets productively.
- 2 Lack of effective forecasting or deviation between expectation and actual outcomes of the business.
- 3 Wrong choose of project and business to lend the fund.
- 4 Lack of supervision, monitoring and control.

- 5 Lack of information and communication between bank and customer.
- 6 Lack of closed relationship between banker and customer.
- 7 Lack of proper information about the situation and transaction of the customer at the time of rendering loan.
- 8 Wrong valuation of accepted collateral by the bank to the loan.
- 9 Lack of step towards the decrease or sell the NPAs, which don't useful to the bank.
- 10 Lack of training and seminars to build the smart human resources.
- 11 Get loss from the operation of the business/project by the customer of the bank.
- 12 Depression of the economy of the country due to the in security and instability of the business environment.
- 13 Lack of proper policy and act to return the expired loan.

2.1.4 Effect of NPAs

NPAs has affected the profitability liquidity and competitive functioning of public and private sector banks and finally the psychology of the bankers in respect of their disposition towards, credit delivery and credit expansion. Increasing Non-Performing Assets (NPAs) has the direct effects to banks, investors and customers. It has also negative impact to the economic health and business of country. It has two types of effects.

A. Internal Effect:

In the one hand, the bank for increasing the profitability can't mobilize the non-performing assets. In the other hand, the banks have to make provision doubtful debts from their profits and other sources. That's why the profit of the banks decreases or may losses. As a result, share capital also becomes capital erosion and capital inadequacy. In the present context, capital adequacy ratio Nepal, India, UAE, and Indonesia are 11%, 12.6%, 12.7% and 21.4% respectively. The central bank of the country can take action to their banking activities, which banks have lower capital or capital adequacy ratio. For example, Nepal Development Bank Ltd. is suffering the same problem (-48.31%) that can't take deposit due to the action of Nepal Rastra Bank.

When the non-performing assets increase, the banks have to increase the amount of provision for doubtful debts and when the loan is repaid, the profit treated as profit. If the provision for

doubtful debts crosses 5% of the total loan amount, the bank have to pay income tax as profit. So, it has direct effect to the cash flow of bank. As a result, the employment of human resources and profit of the bank has also been affected.

B. External Effect:

The banks accept deposits from the public and provide loan to the operation of business and other purposes. When the loan does not return with its interest, it becomes non-performing assets and banks will not able to return the deposited amount to their customer. If the banks unable to return the deposited amount the banks are loosed public supports and faiths. Not only that much but also, the banks have to take loan at a higher rate to pay deposit, which directly affects the profitability of banks and which leads the bank bankruptcy and dissolved. It also affects the monetary system and economy of the country. A part from these effects there are various other effects which cannot be sub-divided. They are;

i) Impact on Profitability:

The NPAs has negative impacts on the profitability of the banks. Non-performing assets are the idle assets of the banks, which do not generate any return for the banks. Thus, we can say that the NPAs reduce the profitability of the banks due to the becoming the idle resources. Not only it reduces the profitability of the banks, but also it may the causes for losing the customer's faiths and supports.

ii) High Cost of Fund Due to NPAs:

Quite often genuine borrowers face the difficulties in raising funds from banks due to mounting NPAs. Either the bank is reluctant in providing the requisite funds to the genuine borrowers or if the funds are provided, come at a very high cost to compensate the lender's losses caused due to high level of NPAs. Therefore, quite often corporate prefer to raise funds through commercial papers (CPs) where the interest rate on working capital charged by banks is higher.

2.1.5 Loan Loss Provision

There is associated risk in every loan. To minimize the risk from possible losses of them loans bank has to allocate some funds as loan loss provision. Loan loss provision is the accumulated funds that are provided as a safeguard to cover possible losses upon classification of risk inherited by individual loans. The level of provisioning in depended upon the level of NPAs and their quality. Increased portion of NPAs generate additional liability of resources to the financial institutions. In other words higher the NPA, higher the provision as downgraded loans need more provision. 1% provision of total credit is minimum requirement as every pass/good loan has to provision by 1%. However, the ratio of provision may differ from nation to nation. In Nepal, NRB has prescribed:

Pass 1%

Substandard 25%

Doubtful 50%

Loss loan 100%

(Loans classification – NRB Directive no 2)

2.2 Highlight on Performance of Nepalese Commercial Bank.

During the last two and half decades the Nepalese Financial System has grown significantly. At the beginning of 1980s, there were only two commercial banks and two development banks in the country. After the adoption of economic liberalization policy, particularly the financial sector liberalization that paved the way for establishment of new banks and non-bank financial institutions into the country. Consequently, by the end of mid – January 2010, altogether 280 banks and non- bank financial institutions licensed by NRB are in operation. Out of them, 31 are “A” class commercial banks, 88 “B” class development banks, 79 “C” class finance companies, 21 “D” class micro-credit development banks, 16 saving and credit co-operatives and 45 NGOs (Banking and Financial statistics mid july, 2010 volume No 52).

The number of commercial bank branches operating in the country increased to 648 in mid July 2010 from 617 in mid July 2009. Among the total bank branches, 48.95 % bank branches are concentrated in the central region alone. By the end of mid Jan 2010, total 318 branches are

being operating in this (central) region. However, in the western, eastern, mid-western and far-western region are 19.45% (120), 19.29% (119), 7.78% (48) and 4.54% (28) respectively.

As a result an increase in number of Financial Institutions as well as volume of transactions, the total assets/liabilities of the financial system witnessed continuous growth over the last seven and half years. During the period 2001 to mid – July 2010, the total assets of whole financial system increased by 14.97% per annum and reached to Rs.829293.3 million in mid – July 2010 from Rs.273946.2 million in mid – July 2001. In mid – July 2010 the total assets registered a growth of 17.41% compared to 21.26% in mid – July 2009.

The structure of financial assets/liabilities shows that Commercial Bank alone holds more than 80% of the total assets and liabilities of the financial system. As of mid – July 2010, Commercial Bank group occupied 82.3% of total assets/liabilities followed by Finance Companies 9.4%, Development Banks 6.0%, Micro-credit Development Bank 1.7% and others 0.6%. The respective shares were 80.2, 11.4, 5.6, 1.8 and 1.0% respectively in mid – July 2010.

Commercial Banks held dominant share on the major balance sheet components of financial system. Of the total deposits Rs.576897.60 millions in mid-July, 2010, the commercial banks occupied 83.2%. Similarly, finance companies held 9.5%, development banks 6.4%, micro credit development banks 0.3% and others 0.6%. Likewise, on the loans and advances the share of commercial banks stood at 77.9%, development banks 7.4%, finance companies 12%, micro credit development banks 1.8% and others 0.7% in mid Jan 2010. In the same year the share of commercial banks in borrowings, liquid funds and investments constituted 59%, 74.8% and 92.2% respectively.

The capital fund, one of the components of liabilities, witnessed a growth of 42.48% and reached to Rs. 36728.30 million in July 2010 from Rs.25778.0, million in mid July 2009. The borrowings and deposit increased by 16.42% and 13.36% respectively, while other liabilities decreased by 34.46% compared to mid July 2009. Similarly loans and advances, the major component of assets increased by 11.83% and reached to Rs. 437871.4 million in mid July 2010 from Rs. 391537.7 million in mid July 2009. The liquid fund and investment increased by 3.41% and 13.62% in mid July 2010 compared to the previous year respectively

The share of loans and advances to total assets decreased to 49.99% in mid July 2010 from 53.45% in mid July 2009. Similarly, investment and liquid funds registered the 18.46% and 11.10% respectively. In the preceding year, the respective shares were 19.23% and 11.80%. In the mid July 2010, the loans and advances increased at lower rate of 12.62% compare to 32.30% in mid July 2009. By the end of mid July 2010, the total outstanding amount of loans and advances of commercial banks reached to Rs. 341127.9 million. It was Rs. 302913.4 million in mid July 2009.

The total investment of commercial banks in mid July 2010 increased by 15.65% and reached to Rs. 126002.1 million from Rs. 108954.8 million in mid July 2009. Similarly liquid fund increased by 13.25% and amounted to Rs. 75735.9 million. In the mid July 2010, total deposit of commercial bank increased by 12.62% compare to 26.25% growth in the mid July 2009. As of mid July 2010it reached to Rs. 479864.2 million from Rs 426080.3 in the mid July 2009 among the component of deposit, current deposit increased with rate of 8.71% compare to 24.56% in last year. Similarly, saving deposit and fixed deposit increased by 14.15% and 11.3% respectively.

The saving deposit comprises the major share in total deposit followed by fixed deposit and current deposit. As of mid July 2010the proportion of saving, fixed, and current deposits are 50.30%, 24.31%, and 12.71% respectively. In the last year the respective share of saving, fixed and current deposit were 49.63%, 24.59% and 13.16 %. Out of the Rs. 344077.8 million outstanding credits in mid July 2010the largest proportion of the loans and advances is occupied by manufacturing sector. The share of this sector is 23.43% followed by wholesale & retailers' 17.32%, others 16.35%, construction 10.84% and finance, insurance & fixed assets by 8.88%.Similarly, service industries comprise 6.66%, transportation, Communication & public services by 5.19% and agriculture by 4.15% in the same year. The non-performing loan of commercial banks declined significantly to 5.38% in mid July 2010rom 6.08% in the July 2009 The total amount of NPA remained to Rs. 18548.20 million from Rs. 18648.5 million in the July 2009.

Despite some improvement, the aggregate capital funds to total risk weighted assets ratio of the banking system remained negative even in mid-July 2007-5.30% and mid-July 2008it remains -

1.71% but latter its seems positive in mid-July 2009 .04% and in mid-July 2010 it remain increase up to 4.34% The huge negative capital funds of two big banks namely NBL and RBB converted the total capital base of the banking system to be negative -29.67%,-32.47%,-22.60%,-17.19%. And -50.30%,-48.45%,-44.17%,-23.30% in mid-July 2007 2008 2009and mid-July 2010respectivally.

2.2.1 Non-Performing Assets in Nepalese Banking Sector

With marginal improvement, the level of non-performing loans and advances still remained at a significantly high level. The aggregate non-performing loan, which was Rs.27877.84 in mid-July 2006 in mid-July 2007it reached to Rs.25580.50, so on Rs.24215.85, Rs.18548.20, in mid-July 2008/9and Rs.18548.20 million in mid-July 2010.the aggregate non-performing loan as % of total loan was 18.79%, 13.16%, 10.56%, 6.08%, and 5.38% in mid-July 2007,2008 and 2009and in mid-July 2010(going on decreasing trends). (Source: Banking and Financial Statistics, NRB, Volume 52, Table no. 6).

(NRB) has expressed his concerns over the outstanding level of non-performing assets in the banking sector that currently stands at 30%. "The total NPA in the banking system is about 35 billion, while it is even worse in case of the two largest commercial banks – Rastriya Banijya Bank and Nepal Bank ltd.", said Dr. khatiwada, during the inauguration of a workshop on 'managing non-performing assets' organized by NRB in collaboration with the bank of Korea and Bank Negara Malaysia.

The NPA levels at the state run RBB stands at 52%, while the figure at the NBL reads 62%, which together accounts for 37% of the total deposits of some Rs.200 billion of the banking system. "In order to address this deplorable situation and to make domestic financial players competent enough to utilize the opportunities of the globalization, various financial reform measure are underway," he added. "The financial sector reform measures undertaken can be broadly grouped under three heads- re-engineering of NRB, restructuring of RBB and NBL, and capacity building of the financial sector. Management of the two ailing banks has been handed over to two teams, consisting of exports from within and outside Nepal."NRB as Central Bank will now concentrate only on care functions and initiate different measure to improve corporate governance in the financial sector. Willful defaulters will not be let off at any cost and NRB will

initiate stringent measures to stop depletion of common man's deposits and erosion of common stockholder's capital," Dr. Rawal warned. (www.thehimalayantimes.com)

2.2.2 Problem in Nepalese Financial Sector and NPLs

Nepal remained fortunate enough not to facing any major financial crisis, especially, from the influence of the Asian crisis. However, at the beginning of the Asian crisis in 1997, Nepalese currency depreciated by 11.2% against US dollar within a short span of time. Though, this was not so big deal as compared to problems encountered by the East Asian Nations. Manandhar, K.B. (2055) opines that the prime reasons behind these less effects are (i) not opening up capital account and portfolio investment; and (ii) enough foreign currency reserve in the economy. Nevertheless, some sort of financial problems especially, in the banking sector have been noticed for the last few years.

In broader term, the large intermediation cost and inefficiencies in the financial system have remained major drawbacks of the Nepalese financial structure. The challenges and complexities of the Nepalese financial system are as follows;

- Weak financial position of most of the government owned financial institutions
- Negative net worth and large accumulated losses of the government owned commercial bank.
- High interest rate differentials between formal and informal financial sector.
- Large interest spread in the formal financial sector.
- Operational inefficiencies, managerial deficiencies and least improvements in financial dealings.
- Active participation of government in the financial system.
- Lack of internationally recognized accounting and auditing practice in the system
- Higher proportion of non-performing assets.

In this regards, Paudel (2059) adds some other factors like unnecessary influences of the employees' union, weak corporate governance (lack of transparency, accountability, laws and bye-laws), lack of effective regulation and supervision caused to worsening the financial system. From the analysis above, it can be said that weak legal and regulatory Framework are the responsible factors for weakening the Nepalese financial system, which is, to some extent, similar to the factors that caused to worsen the East Asian financial sector in the late 1990s.

Obviously, a distress financial system adversely hits the quality of the assets in the system. As such, the non-performing loans as a percentage of total loans in the banking sector was 14.3% in 2000 while it increased by over cent %age point to 29.3% in 2001 and to 30.1% in 2002. However in the mid of Jan, 2003, NPLs declined marginally to 29.9% of total loans. Similarly, both the state-owned banks comprised over 50.00% of non-performing loans as at mid-Jan 2003, which seems to be alarming. The basic reasons for deteriorating assets quality are:

- The use of banking sector as instrument of policy lending under populist schemes.
- Projects financed in the pre-reform era, with high gearing, low promoters stake, with viability based on high tariffs and fiscal concessions.
- Large corporate miss-utilized the credits and delayed payments.
- Lack of vision in appraisal of loan proposals while sanctioning, reviewing or enhancing credits limits.
- Absence of risk management policies.
- Concentration of credits on few groups or sectors
- Lack of initiatives to take timely action against willful defaulters.
- Labor oriented small sized old technology operations.
- Non-transparent accounting policies and poor auditing practices.
- Political patronage and pressure when sanctioning loans
- Aggressive lending.

Besides these, the reasons behind the rise in NPLs could be outlined as the inferior mortgages against the loans, lack of financial information of the loanees, extension of bank branches in the least feasible geographical areas, over staffing in the banks and so on.

Dungana (2008) in his article titled "Why Assets Management Co. is considered the best to solve the non-performing loan problem" as above has tried to highlight one of the approach mainly Assets Management Company (AMC) for resolving the problem of NPL. As per him, AMC is specialize financial intermediary to manage the non-performing and distress loans of banks and financial institutions who buy the NPL from financial institution and take necessary steps to recover the maximum value from the acquired assets. As per his view, if NPLs are not resolved in time there would be inherent direct or indirect costs to the economy. As stated by him NPL may arise due to the external factors like decrease in market value of collateral deterioration

borrower's repayment capacity, economic slowdown, borrower's misconduct, improper credit appraisal system, lack of risk management practice, ineffective credit monitoring and supervision system. Hence he suggested that, NPL should be kept at minimum level and the specialized institution such as AMC's should manage the distressed loans.

He says that both traditional approach and AMC are available to deal with NPL problem. Under traditional approach, bank handles the NPLs in its own way especially through recovery unit who focus on continuing negotiation with the borrower and give top priority to the loan recovery. As opined by the writer, this approach is useful in dealing with small business loans where personal touch is adopted but for big loan this approach does not work. "AMCs seem as the only realistic option when the financial sector recovery is the underlying objective in financial system where the institution fails to resolve the NPL problem through their own efforts" (Dungana, 2058; P.125).

He stated that the main advantage of establishing AMC is that AMC is able to move in an expeditious manner removing the distraction of managing NPLs from the banking system and frees up resources within the financial institution allowing them to concentrate on their core activities.

He concludes, "As in most of the countries, Nepalese Financial System is largely dominated by the banking sector. The banking sector is severely affected by the NPL problem, it is estimated that the NPL of the Nepalese Banking system is around 16%. Therefore there is no doubt that it has serious implication on the economic performance of the country. It will be the eclipse in the development of financial soundness in the economy, if not controlled in time. However, traditional or AMC route can be practiced to get recovery from this sickness of the financial system, the AMC route may be more effective approach to be quick recovery as it has been experience around the world."

Sapkota (2004) has written an article titled "portion of NPA in commercial Banks – High in Public, Low in Private" which was published in Rajdhani on 19th May 2004. In this article, Mr. Sapkota has stated that the problem of NPL is seen less in private banks in comparison to public banks. The NPA of two big nationalized banks being about 60% if the total loans are very serious situation. He further mentioned that in order to improve this situation and to make

healthy banking environment, financial reform program has been brought as its consequences, the management of two bog banks was handed to foreign company on a contract but the ratio of NPL was not reduced.

Even most of the privately owned banks has NPA within international standard, some privately owned bank's NPA is higher than international standard. As per international standard 5% NPA is acceptable. He also states that, Nepal's total NPA of banking sector is 30%, which is very high (Shapkota, 2004; P.5).

Financial sector reform measures can be broadly grouped under three heads: (i) restructuring of large two state-owned banks (ii) reengineering of the central banks and (iii) capacity building in the financial sector. In this connection, management of two state-owned banks has been handed over to the expert groups comprising the people within and outside of Nepal; the reengineering and restructuring process of the central bank (Nepal Rastra Bank) is in progress. Side by side, the capacity building in the financial sector is smoothly approaching ahead. Enactment of new NRB Act 2002 gives greater autonomy in its operation, enforcement of inspection and supervision directives based on international standard, withdrawal of government/ NRB involvement from the financial institutions, adoption of accommodative monetary measures are the efforts made to build up sound financial environment. Moreover, with a view to strengthening legal arrangements, Debt Recovery Act has been approved and the Debt consolidate financial sector through an umbrella act Banks and Financial Institutions Act has recently been approved and for the purpose to resolve the problem of non-performing assets- Asset Management Company Act is in the process of being approved. In addition, establishment of Credit Rating Company, strengthening of Credit Bureau and Bankers' Training Center are some of the tasks progressing ahead. With the arrangement of such a legislative, regulatory, supervisory and institutional framework, the financial sector would, hopefully, take a pace for reviving which, in turn, would help NPLs to be reduced. Moreover,

In the article by Regmi, (2063) titled "Non-Performing Assets Management" the writer stated about the management of NPAs in the commercial banks. He writes, the NPAs includes the non-performing loan, non-banking assets, remaining non-performing loan, suspend interest and unutilized assets. The increasing NPA are the emerging problem in commercial banks, which is

the main factor for failure of the banks.

He said, NPAs are caused by investment of assets in non-productive sectors, lack of future prediction, lack of proper supervision, monitor, control lack of information and failure of recovery of loan and their interest on time. He also added, the low quality of collateral of loans, failure of projects, and lack of appropriate rules and regulations to punished the bad loan takers. He shows the following NPAs in commercial banks: He added that increasing NPAs directly affects to the banks, investors and human resources. Not only that but also it affects the customer, economy of country, and business activities. Increasing NPA has two types of impact on banks: internal impact and external impact. In internal, it affects directly on profitability and human resources and in external, it affects to customers, investors, management and country's economy (Regmi, 2063; P.75).

He concludes that it is like a cancer of banks. Thus, it is necessary to control this cancer on time; otherwise, it becomes a big issue for bankruptcy. NPA have to need microanalysis to protect the banks, investors, customers, human resources and country's economy. For that, a clear 'Road Map' is required. To success the laws and policies, all the stakeholders should take responsibilities.

Adhikari (2062) “Non-performing Loan and its Management” states in articles one of the main function of commercial bank is to management of non-performing loan. Main function of commercial bank and financial institution is accepting deposit and provide loan. In underdeveloped country like Nepal providing Loan and interest income generating through loan is the main source of bank and financial institution. If provided loan become non-performing loan the bank and financial institution suffer from big financial scarcity. One side un-recover interest cannot make income and other side loan its self converts in NPL that make huge effect in financial condition of bank and financial institution. So management of NPL is crucial factor any bank and financial institution.

The two commercial banks hold by government. Nepal Bank Ltd. and Rastriya Banijya Bank are accounting for the highest number and amount of non-performing assets (NPA) among the other commercial banks.

The main causes of being loan become non performing loan are as follows

- 1 lack of proper analysis
- 2 Lack of specific loan policy
- 3 Lack of supervision
- 4 slump on aggregate economy
- 5 monopolies on corporate loan and its unsuccessful
- 6 weak in consortium loan
- 7 less responsibility of borrower
- 8 Inadequate in internal Control and Audit
- 9 Inadequate in supervision of Central bank

In this way NPA generate in bank and financial institution. Every Banking s system there is some level of non-performing loan. So it should be managed differently. Bank manages their loan and credit if nonperforming loan are acceptable level. But if bank's NPL are more than acceptable levels then it impacts on aggregate financial position of bank and market as worse. In this case bank should manage and treat its NPL differently. A single unit with expert should be assign for proper and appropriate management of huge amount of non-performing loan. For better management of nonperforming loan Asset Management Company or corporation (AMC) is required. Proper management of nonperforming loan and recapitalization, these two important improvements are requiring for better every banking system (Adhikari, 2062++; PP.39-43).

2.3 Case of Non-Performing Assets/Loans (NPAs/Ls) In East Asia

Three years have passed since the financial crisis hit Asian economics in July 1997. As a result, East Asian countries in 1998 recorded negative growth ranging from 5 to 12%. In 1999, however, economics improved in several countries: South Korea in particular recorded a "V" type of recovery. Although the growth process has slowed somewhat in 2000, progress continues and on the basis of the recent rapid recovery, there is optimism that the East Asian financial crisis has ended. On the other hand, there is also the opinion that the situation does not (NPLs) problems in the financial and corporate sectors have not progressed sufficiently. This paper looks into the issues that beset East Asian economics, based on the assessment of the status of NPL restructuring in Malaysia, South Korea, Thailand and Indonesia.

Immediately preceding the Asian financial crisis, Japan was tackling a NPL problem that resulted from the bursting of the so-called bubble economy in 1990. Economic depression has continued for nearly ten years since then, and the Japanese economy has yet to get back to the track of sustainable growth. The chief cause of this crisis, in a nutshell, was that the government did not take measures to deal with NPLs in a timely manner. Cooperative credit purchasing company was launched in 1993 to buy NPLs and the Housing Loans Management Company was set up in 1996 to deal with the problem of housing-related NPLs. These efforts were inadequate and the real solution had to wait for larger-scale public funds that were made available to financial institutions in March 1998, eight years after the bursting of the bubble economy. The process of resolving NPLs in Japan was indeed too little, too late. Japan adopted the policy of waiting for the economic environment to take a favorable turn, instead of taking swift, decisive action.

On the other hand, many East Asian countries addressed the problem of NPLs rather swiftly. For example, South Korea immediately injected large amounts of public funds into financial institutions. Three years after the financial crisis, the solution to NPLs is progressing relatively well in South Korea and Malaysia, while Thailand and Indonesia are lagging behind. To solve the issue of NPLs, it is necessary to make structural improvements, especially in the financial system and corporate governance that actually caused the NPL problem.

The economic growth rate in each of these countries is projected to a register downward trend in 2000, compared to the previous year, and the current account surplus is diminishing. Since East Asian economics depend heavily upon the US economy, its current slowdown will be a damper to these countries recovery. It is therefore necessary to analyze the current status of NPL problem, financial restructuring and corporate governance to make sure they can cope with adversely changing economic environment. (Maximizing Value of non-performing assets Proceedings from the Third Forum for Asian Insolvency Reform – November 2003).

2.4 Review of Related Studies

2.4.1 Review of Related Articles and Journals

Chhetri (2057) stated in his article titled "Non-Performing Assets: A Need for Rationalization"

that to provide connotation of the NPA and its potential sources, implication of NPA in financial sector in the South East Asian Resign. He has also given possible measure to contain NPA. "Loan and Advances of financial institution are mean to be serviced either part of principle of the interest of the amount borrowed in stipulated time as agreed by the parties at the time of loan settlement. Since the date becomes past dues, the loans becomes non-performing assets. The book of the account with lending institution should be effectively operative by means of real transaction effected on the part of the debtor in order to remain loan performing" (Chhetri, 2057; P.17).

As per his opinion, the definition of NPA differs from country to country. In some of the developing countries of Asia Pacific Economic Cooperation (APEC) forum, a loan is classified as non-performing only after it has been arrear for at least 6 months; similarly, it is after three months in India, loans thus defaulted are classified into different categories having their differing implication on the assets management of financial institution. He also stated that NPAs are classified according to international practice into three categories namely substandard, doubtful and loss depending upon the temporal position of loan default. "Thus the degree of NPA assets depends solely on the length of time the assets has been in the form of none obliged by the lone. The more time it has elapsed the worsted condition of asses is being perceived and such assets are treated according."

As per Mr. Chhetri's view, failure of business for which loan was used, defective and below standard credit appraisal system, credit program sponsored by Government, slowdown in economy/recession, diversion of fund are some of the lending to accumulation of NPAs.

He said that there is serious implication of NPAs, on financial institution. He further added that the liability of credit institution does not limit to the amount declared as NPA but extend to extra amount that requires by regulation of supervisory authority in the form of provisioning as the amount required for provisioning depends upon the level of NPAs create a psyche of worse environment especially in the financial institution like waiving interest, rescheduling the loan, writing off the loan, appointing private recovery agent, taking help of tribunals and law of land etc NPAs can be reduced. Finally he concluded that financial institutions are beset with the burden of mounting level of NPAs in developing countries. "Such assets debar the income flow

of the financial institution while claiming additional resources in the form of provisioning thereby hindering gainful investment. Rising level of NPAs can't be taken as stimulus but the vigilance demanded to solve the problem like this, eventually will generate vigor to gear up the banking and financial activities in more active way contributing to energizing growth.

Pyakuryal (2001) has stated in his articles entitled 'Our Economy is in a Volatile Stage' that the banks have not able to collect their overdue due to the increasing cumulative NPAs in Nepalese commercial banks. There is no additional demand of the investment due to the higher risk and present uncertainty.

He said, Revenue collection is negative and regular expenditure is higher than the revenue. This indicates volatility of the economy. Even before the declaration of emergency, the government didn't have surplus revenue to pay for the remuneration and benefits of retired civil servants. The year 2002 is going to be difficult as major loans are going to mature. Debt servicing will also demand a significant share of the budget. Up to 65% of our development expenditure is being financed by foreign aid. But if we can't meet the regular expenditure (through our revenue), it will be very difficult for us to convince the donor community. This could push our society toward what is called a 'mass unrest society.'

He also adds, "The government is about to establish an Assets Management Company to take over the non-performing assets (NPAs) of the government-owned banks. On the other hand, it looks like the government's entire concentration has been on two commercial banks only (Nepal Bank Ltd. and Rastriya Banijya Bank). Due to cumulative growth of the NPAs, the banks haven't been able to collect their overdue. Due to the present uncertainty and higher risks, there is virtually no demand for new investments. That's why many banks are concentrating on conventional areas. We haven't been able to explore potential areas of competitive advantage in the regional context" (Pyakuryal, 2001; P.3).

After 1990, we have seen that macroeconomic stability could not ensure the reduction of poverty. If the present rate of economic growth and population growth continues, it will take at least 20 years to double our per capital income. It has been proved that macroeconomic stability alone can't ensure economic development in country like Nepal. At the same time, the low-level of inflation at present may not reflect future prospects for Nepalese economy.

Neupane (2058) said in his article titled 'NPAs in Nepalese Financial Institutions' that thinking rationally no one shall be surprised to note two of the giant commercial banks of this country such as Nepal Bank Ltd. and Rastriya Banijya Bank accounting for the highest number and amount of non-performing assets (NPA) among players in the industry. In general and more specifically, in least developed countries like ours, the larger the size of the credit portfolio the larger the amount of NPAs.

As per his view, "the concept and realization of NPAs in the Nepalese financial sector evolved round about a decade ago along with the notion of prudential accounting norms. I reckon that ten years time frame should have been more than enough to formulate and implement strategies for identifying and canalizing the ever accumulating NPAs at Nepalese financial institutions (FIs). However, the Nepal Rastra Bank (NRB) seems to have realized the panic only a year ago. As a result, the NRB came up with a nineteen-point strategy, primarily pertaining to ways to tackle NPAs. Some of the measures the NRB has envisaged are formation of an assets reconstruction company, credit rating agencies, legal reforms, strengthening administrative/monitoring/supervising mechanisms etc, and above all, the recent NRB directive (number 1to7). Although the NRB, the FIs would have been much better off had it come up with all these philosophies some five years ago, better late than never" (Neupane, 2058;P.1).

He expressed the one major reason that can be attributed for the already prevalent and ever increasing NPA is unhealthy competition among the commercial banks. Since, the size of our economy has remained more or less stagnant over the past half a decade or so, the size of the total pie has not changed much. Every player in the market means business and its primary motto is "making profit". This has enhanced unhealthy competition among the banks through interest rate reduction, issuing loans irrespective of borrowers' credibility and authenticity, etc. in course of making their credit portfolios bigger, all the players have been pouring their investments into the same pie thereby over financing the pie. Given this scenario, it is no surprise to discover a good loan turning into an NPA because of over financing.

There is no denying that no capital market around the world can be termed perfect. However, the capital markets are primarily driven by certain norms, which make lots of sense, and every single movement including stock price fluctuation is guided by prudential norms. By contrast, share

prices at the Nepal Stock Exchange (NEPSE) move very surprisingly. Share prices at NEPSE are bound to move upward if a bank registers say Rs.800 million in profit, an accounting profit, even if it does not contribute anything towards shareholders' wealth maximization. The bank, even while accumulating a sizable NPA, can manage to fool the general public in terms of the accounting profit it registers.

Even the most profitable sector of the economy, be it a primary source of foreign currency earning, should not be over financed. There should always be an upper limit for any sector that deserves banks financing. Recently, the NRB came up with a directive to lessen risk concentration on a single borrower/single sector of the economy. The directive states that large sector concentrations constitute a source of risk. Bank managements shall have adequate internal policies and systems in place to monitor the bank's sector exposure. However, if the NRB so directs, judging it necessary, a bank shall have to provide additional capital with a view to providing uniformity in the categorization of various sectors of the economy. NRB's policy of limiting FIs from pouring their lending into a single sector of the economy can be regarded very positive since it is likely to diversify the risk of the total investment evenly and thereby minimize the risk of NPA. NRB shall continue to be more stringent in formulating firm policies in the days ahead too to protect shareholder interests.

At last, even if the banks endeavor to recoup NPAs through the auction of mortgaged property, the legal system and the regulations are so shabby and defaulter friendly that they have to struggle for many years to realize the auction process. Just imagine this process; a borrower, initially, default payment, the bank calls back the loan, six months there on the concerned authority blacklists the borrower, a 35 days' notice goes to the papers for auction and after that a 7 days ultimatum and so on and so forth. Hundreds of cases have been lingering in the courts for many years. Inefficient legal provisions, from the point of view of the bankers, have encouraged borrowers to default and contributed more towards enhancing the quantum of NPA in Nepalese FIs

2.4.2 Review of Related Thesis

Pandey, (2002) has carried out study on 'Nepal Rastra Bank- Directives Their Implementation and Impact on the commercial Banks- A Case Study of Himalayan Bank Limited' with the

objectives to find out the impact of change in NRB directives on the performance of the commercial banks and find out whether the directives were implemented or not.

"The directives if not properly addressed have potential to wreck the financial system of the country as they are the only tool of the NRB to supervise and monitor the financial institution. The directives in themselves aren't that important unless properly implemented, the implementation part depends upon the commercial banks. In case commercial banks are making such huge profit with full compliance of NRB directives, then the commercial banks would deserve votes of praise because they would be instrumental in the economic development of the country. All the changes in NRB directive made impacts on the bank and the result are the followings;

- Increase in operational procedure of the bank, which increase the operational cost of the bank.
- A short term decreases in profitability, which result to lesser dividends to shareholder and lesser bonus to the employees.
- Reduction in the loan exposure of the bank decreases the interest income but increase the protection of the depositors' money.
- Increase protection to the money of the depositors' through increased capital adequacy ratios and more stringent loan related documents.

All the aforesaid results lead to one direction: the bank will be financially healthy and stronger in the future. HBL will be able to withstand tougher economic situation in the future with adequate capital and provision for losses. The tough time through which the bank is undergoing at present will prevail only for a couple of years but in the long run, it will be strong enough to attract more deposits and expose itself to more risk with capital cushion behind it. The quality of the assets of the banks will become better as banks will be careful creating credit. Ultimately, the changes in the directives will bring prosperity not only to the shareholders but also to the depositors, the employees and economy of the country as a whole." (Pandey, 2002; P.101).

Khadka, (2002) has stated in her study "A Comparative Study on Investment Policy of Commercial Bank" with an objective to find out the relationship between deposits, investment, loans and advances and net profit. She has made the following conclusion while comparing the performance of NBL with NABIL, SCBNL and NIBL.

She expresses that NBL is comparatively less successful in on balance sheet as well as off-balance sheet operations than that of other CBs. It predicts that in the coming days if it could not mobilize and utilize its resources as efficiently as other CBs to maximize the returns, it would lag behind in the comparative market. (Khadka, 2002; P.88).

As the banks experience many difficulties in recovering the loans and advances and their large amount is being blocked as non-performing assets. She suggested that there is an urgent need to work out a suitable mechanism through which the overdue loan can be realized.

Shrestha, (2004) in her study "A Study on Non-Performing Loan and Loan Loss Provisioning of Commercial Banks" with reference to Nepal Bank Ltd, NABIL Bank Ltd. and Standard Chartered Bank Nepal Ltd., has made an attempt to analyze the various aspects of non-performing loan in the commercial banks. Her main objectives of the study is to find out the proportion of non-performing loan, factors leading to accumulation of non-performing loan, relationship between loan and loan loss provision and impact of loan loss provision on profitability of the commercial bank.

She concludes, "Increasing non-performing loan is the serious problem of the banking sector in Nepal. Non-performing assets directly affects the income flow of the bank. It has been found that NBL has very high portion of non-performing loan resulting to higher portion. Hence, even the bank has the highest investment in the most income generating assets i.e. loan and advances, it is in loss. Even the private sector bank like NABIL has higher non-performing loan and according higher provision. NABIL's average proportion on non-performing loan during the study period is higher than the acceptable. However in recent two year NABIL's non-performing loan has shown significant decrement and according provision has also decreased. Among the three banks, SCBNL has the least non-performing loan and thus the least loan provision. From these indicators it can be said that SCBNL is the best among the three banks. However, SCBNL seems less oriented towards lending. Hence, the lower %age of NPL and provisioning of SCBNL is not only due to proper lending function but also due to relatively lower investment in loans and advances."(Shrestha, 2004; P.99).

She also said that ineffective credit policy, political pressure to lend uncredit worthy borrowers, overvaluation of collateral are the major cause of mounting non-performing assets in government

owed banks like NBL. Other factors lending to accumulation of NPAs are weak loan sanctioning process, ineffective credit monitoring and supervision system, economic slowdown, borrower's misconduct etc. In addition to this establishing recovery cell hiring Asset Management Company is also measure to resolve the problem of NPL.

She recommended that the factor which leads to non-performing loan are improper credit appraisal system, ineffective credit monitoring and supervision system etc. Besides that negligence in taking information from credit information bureau may also lead to bad debts. Hence all the three banks are recommended to be more cautions and realistic while granting loans and advances. After advancing loans there should be regular supervision and follow up for proper utilization of loan. It also recommended that the banks to initiate training and development program for the employees to make them efficient and professional in credit appraisal, monitoring and proper risk management. The regulation regarding loan classification and provisioning is stringent and tighter than the previous. Hence, NRB should not only impose directives but also create supportive environment for the commercial banks. NRB is recommended to strength credit information bureau (CIB) so that banks can get required credit information about the borrowers on time. This help in reducing NPL.

Bhattarai, (2004) has stated in her research "Implementation of Directives Issued by Nepal Rastra Bank: A Comparative Study of Nepal SBI Bank Ltd. and Nepal Bangladesh Ltd." to analyze the various aspects of NRB directives such as capital adequacy and loan classification and loan provisioning. In her view, the loan classification helps to the banks to monitor the quality of their loan and advances and to take step towards the remedial action in the credit quality of their loan and advances.

She concludes that the new provision of the banks will have its provision amount increasing in coming years and subsequently profitability of the banks will also come down. However, the true picture of the quality of the assets will be painted in the coming year. She recommends, "The banks should be very careful while analyzing the paying capacity of its credit clients. With longer period of past due, the bank will end up increasing its provisions which will keep the bottom line low if the bank is not careful."

Khadka, (2004) in his thesis "Non-Performing Assets of Nepalese Commercial Banks" with an

objective to examine the level of NPAs in total assets, total deposit and total landing of Nepalese commercial banks. He also showed that the effects of non-performing assets on Return on Assets and Return on Equity of Nepalese commercial banks.

He said that despite of being loan and advances more profitable those other assets, it creates risk of non-payment for the bank. Such risk is known as credit risk or default risk. Therefore, like other assets on the basis of overdue schedule. Escalating level of NPAs has been becoming great problem in banking business in the world. In this context, Nepal can't be run off from such situation. The level of NPAs in Nepalese banking business is very alarming. It is well known fact the problem of swelling non-performing assets (NPAs) and the issue is becoming more and more unmanageable day by day. We are well known from different financial reports, newspaper and news that the total NPA in Nepalese banking system is about 35 billion, while it is very worse in case of two largest commercial banks Rastriya Banijya Bank (RBB) and Nepal Bank Ltd. (NBL) (Khadka, 2004:PP.79-82)..

Finally, he concludes that the level of NPA in sampled Nepalese Commercial banks is not so alarming. The situation is quite satisfactory. But the increasing trend remain continue in coming days, the situation will be unmanageable and alarming. The commercial banks could not give full attention towards supervising their lending and towards recovering their bad loans perfectly. Level of NPA has been increasing. The level of NPA of Nepal Bangladesh Bank Ltd.(NBBL), Nepal SBI Bank ltd. (NSBIBL), and Bank of Kathmandu ltd (BOK) seems very unsatisfactory. If the situation is not handing right now, it will be unmanageable and difficult to handle.

In other level of NPA of Nepal Investment Bank and NABIL bank has been gradually decreasing every year. The NPA of NIBL is least (minimum) than all of other banks at the end of 2059/60.

The high degree of negative correlation of different commercial banks between NPA and ROA, and NPA and ROE indicates towards the inverse relation between NPA and ROA, and NPA and ROE. It means the level of NPA effect the return on assets and return on shareholder's equity. Therefore, banks should reduce their level of NPA to increase the ROE and ROA.

He recommends that the banks should have to take enough collateral while lending loan, appropriate financial analysis, supervision, monitoring and control should be done. Lastly, those

banks having high level of NPA should take immediate action towards recovering their bad loan as possible as soon. In case of default to repay the loan by borrower, the bank should dispose off the collateral taken from the borrower and recover principle and interest amount.

Shrestha, (2007) in her thesis "Comparative Analysis of Non-Performing Assets of Nepalese Commercial Banks" is aimed of studying the non-performing assets of private commercial banks. For this purpose, descriptive and analytical research design was adopted out of total population 18 commercial bank, four private banks were taken as sample using judgment sampling method, and they are Lumbini, NCC, NBBL and SCBNL. In this study secondary data are used. Besides this, newspaper, relevant thesis, journals, articles, related website etc. are also taken for this research. The data collected from various sources are recorded systematically and presented in appropriate forms of table and charts and appropriate mathematical, statistical, financial and graphical tools have been applied to analyze the collected data in suitable manner. The data of five consecutive yrs of the four banks have been analyzed to meet the objective of the study.

Lumbini Bank has the highest proportion of loan and advances to total assets of bank but the SCBNL has the lowest proportion of loan and advances during the study period. It indicates the risk averse attitude of the management of SCBNL, NBBL and NCC have moderate ratio. Same thing can be known on the basis of loan and advances to total deposit ratio. The Lumbini has the highest proportion among where as SCBNL show the lowest ratio. From this ratio Lumbini, NCC, NBBL are the higher loan provider. They are rendering an average of 89.156, 81.738, and 77.78 of their total deposit funds.

It is found that the NCC has the highest NPA to total loan & advance secondly the Lumbini has the NPA to total loan & advance. They are generating most of their assets in loan and advance but they are in loss. SCBNL invest least amount of their resources in loan and advances even NBBL invest the lesser amount of their resources in loan and advances comparing with NCC and Lumbini. That's why their profits show the positive during the study period. Among them SCBNL is the best bank and also it can be said that the NBBL are quite satisfactory banks according to their return on loan and advances. As a sample drawn from private sector, we can

see the different between their transactions. Among this private bank SCBNL is less interested in lending loan and advances. Thus it may be caused to get less NPA and LLP and vice-versa to the other banks.

In conclusion, improper credit policy political pressure to lend, lack of supervision and monitoring, economic (slow down, overvaluations of collateral are the major causes of occurring NPAs. In recent yr, not only the private sectors banks but also public sector's banks are trying to maintain their loan & advances to control over becoming the NPA.

Shrestha (2008) on her research "A study on the credit risk management of Nepalese Commercial Banks" aims following objective taking Kumari Bank and Machhapuchre Bank.

- 1 To examine the credit risk position of the selected commercial banks in Nepal
- 2 To analyze the credit risk management system and practices of KBL and MBL
- 3 To evaluate the organizational structure of KBL and MBL to manage the credit risk.

From the analyses of credit risks, following major findings have been obtained:

- a. From the analysis of primary data, it is found that the majority of the respondents of both banks have favored with the bank's single sector, which is up to 10 % of total loan. However, the sector wise lending analysis portrays that KBL and MBL have extended up to 19.88 % and 30.12% of loan in a single sector respectively in FY 2005/06. Similarly, the exposure on the single sector of KBL and MBL exceeds 10 % of total loan in 3 and 5 sectors respectively. The single sector loan to core capital shows that the ratio crossed 100% in 2 sectors of both KBL and MBL. In regard to concentration risk, KBL has more risk in manufacturing and others sector where as MBL has more risk on manufacturing and Whole seller and sectors as the single sector credit to core capital ratio in these sectors is more than 100 %. MBL has very high loan
- b. Concentration on manufacturing sector of 199.35% of the core capital. From the personal interview of the key respondents it was found that both banks have been extending credit in those highly concentrated sectors after getting approval from the board of director. This clarifies that concentration risk is the main source of credit risk for KBL and MBL.
- c. Similarly, lack of systematic and thorough credit processing is also the major source of

credit risk in these banks. The problems in credit processing include lack of thorough credit assessment, absence of testing and validation of new lending techniques, subjective decision-making by senior management, lack of effective credit review process, failure to monitor borrowers or collateral values, and failure of banks to take sufficient account of business cycle effects etc. Likewise the market-sensitive and Liquidity-sensitive exposures also increase the credit risk of these banks. Similarly, it is found that both banks have their own rating system of the credit client and the sectors. Both banks have ranked 1st to the manufacturing sector where as the Agriculture sector has been ranked the last on the basis of priority. KBL has chosen others sector and real estate business in 2nd and 3rd position respectively, where as the MBL has just opposite preference in these sectors.

- d. Likewise, KBL has ranked Character, Collateral and Capacity of borrower first, second and third criterion for granting credit where as MBL ranked Character, Capacity and Capital first, second and third priority respectively. The hypothesis test on the preference of the bank's staff also proves that there is no significant difference between observed and expected frequency of ranking.
- e. Lending analysis against various collaterals: it has been found that both the banks have lent highest amount of loan against the movable/ immovable property. The average lending over 5 years period of KBL and MBL against movable/ immovable property is Rs. 2,987 million and 2,673 million respectively. Similarly, the lending against others securities (i.e. other than prescribed by NRB) is second position for both banks, whereas the lending against guarantee of local banks and finance companies is in third position. However, MBL has also granted loan without any collateral. The average amount of loan without collateral is Rs. 3 million annually, which is in the 6th place on ranking. On the contrary, KBL has not granted any loan without backing any collateral.

In conclusion, the major banking risks include credit risk, market risk (i.e. liquidity risk, interest risk, operation risk etc). Among these risks, credit risk has the major impact on banking (i.e. more than 60 %). Because of the credit risk, the non performing loan (NPL) of bank will increase. With the increase in NPL, the loan loss provisioning will also increase simultaneously leading to decrease in profit. The decrease in profit results in low dividend to shareholder and

bonus to employees.

To remain alert and prepare plans and policies to tackle unpredictable factors such as violence riots, natural disaster, technology and employees, fault and fraud of customers and outsiders are the challenges for these commercial banks. For proper management of the credit risk, both banks have their own set of policies and practices, which is in consistence with NRB guidelines. For credit risk management, both banks have Credit Policies Guidelines (CPG). Similarly, NPL is regularly monitored by both the banks on regular basis and provisioning is done on quarterly basis by categorizing the loan as per NRB guidelines. Similarly, sector wise and security wise lending is being analyzed by these banks on monthly basis. Organizational structure of these banks is frequently restructured for proper credit risk management as per requirement.

For minimizing the loss arising due to occurrence of the credit risks, capital adequacy have been maintained by these banks within the standard prescribed by NRB. However, the trend of Capital Adequacy ratio of these banks suggests that both the banks need to increase their capital fund, which is possible mainly by issuing shares, debentures or preference share.

Though both the banks have their own set of procedures for assessing various risks and their management, problems are still prevalent in these banks. In credit risk, single sector loan concentration is the main problem in both the banks. In MBL, the major problem is a high amount of lending in manufacturing sector, lending without collateral, non-performing loan & organizational structure for handing credit risk. In KBL, with the increase in total loan, NPL is also increasing. So, proper adjustment is needed for managing the NPL.

2.5 Research Gap

The review of above relevant literature has contributed to enhance the fundamental understanding and knowledge, which is required to make this study meaningful and purposeful. There is various researchers conduct on investment policy, Non-performing loan, credit policy, financial performance etc in various topics. The past researches in measuring investment policy of bank have focused on the limit ratios, which are incapable of solving the problems. In this research various ratio are systematically analyzed and generalized. The ratios are not categorized according to nature. Here in this research all ratios are categorized according to their area and

nature.

In this study of “A COMPARATIVE ANALYSIS ON NON-PERFORMING ASSETS OF RASTRIYA BANIJYA BANK AND NABIL BANK LTD is measuring by various asset ratios, trend analysis and various statistical tools as well and financial tools are used for analyzing survey data. Since the researcher have used data only five fiscal year but all the data are current and fact. Thesis of Khadka (2004) "Non-Performing Assets of Nepalese Commercial Banks Credit management of Commercial bank with reference to Nepal Bangladesh Bank and Bank of Kathmandu Limited” and Bhattarai, (2004) "Implementation of Directives Issued by Nepal Rastra Bank” has not use correlation, probable error and trend analysis. Limbu and Shrestha have done using all tools and technique in their research. This study tries to define non-performing assets of commercial Bank by applying and analyzing various financial tools as well as different statistical tools like coefficient of correlation and trend analysis. Probably this will be the appropriate research in the non-performing assets of commercial Bank and financial institutions.

CHAPTER -III

RESEARCH METHODOLOGY

This chapter is divided into following five parts:

3.1 Research Design

This research is aimed at studying the non-performing assets of commercial banks. This study follows analytical and descriptive research design. And it also analyzes the composition of trend of non-performing assets, loans recovery and profitability condition of commercial banks. This study also follows the historical research design because research must be based on past phenomenon. Past knowledge and data cannot be avoided.

3.2 Population and Sample

For purpose of study, the random sampling had been used to analysis about total member number and inters group number. Total commercial banks are taken as population among them RBB and NABIL bank are taken as sample on the basis of government bank and public limited bank.

- Rastriya Banijya Bank
- Nabil Bank Limited

3.3 Nature and Sources of Data

The main task of the researcher is to collect information and data from different sources. To achieve the desired objectives of the research study, it is necessary to identify the sources of data. Making study more reliable and justifiable, secondary data has been used in this study. Published articles, books, newspaper, websites and annual reports of concerned banks are the secondary sources of data. In this study, secondary data were taken from annual reports of related banks, annual reports of Nepal Rastra Bank Samachar, Bank Supervision Report, news papers and magazines, different web sites, libraries, unpublished thesis and journals.

3.4 Data Processing Procedures

Data collected from various sources were in raw form. They are classified, tabulated and processed as per the nature of the study and in accordance of the data. Data have been processed by applying different financial and statistical tool made data analysis. Further to represent the data in simple form bar diagrams and graphs have also been used.

3.5 Financial and Statistical tools and Technique

3.5.1 Financial Tools

To assess the company's financial position and performance, ratio analysis as the financial tools have been used.

3.5.1.1 Ratio Analysis

Ratio shows the relationship between the two variables or one another. It presents the relative strengths and weakness of any firms or organization. It also shows the financial growth of the organization and financial performances of the organization. It summaries the financial figurer and make quantitative judgment about the financial performances and positions. The relationship between two accounting figures expressed mathematically is known as financial ratio. To make analysis, we can use various ratios. But only those ratios have been calculated which are related to the subject matter

i. Loans & Advances to Total Assets Ratio

The loans and advances to total assets ratio measures the amount of loans and advances in total assets.

$$\text{Loans \& Advances to Total Assets Ratio} = \frac{\text{Loans and advances}}{\text{Total Asset}}$$

ii. Loans and Advances to Total Deposit Ratio

It shows how much fund of deposit is provided as loans and advances.

$$\text{Loans and Advances to Total Deposit Ratio} = \frac{\text{Loan and Advances}}{\text{Total deposits}}$$

iii. Non-Performing Assets to total Loans and Advances Ratio:

This ratio determines the non-performing assets in the total loans and advances portfolio.

$$\text{NPA to Total loans and Advances Ratio} = \frac{\text{Total non - performing loans}}{\text{Total loans \& advances}}$$

iv. Provision Held to Non-Performing Assets Ratio:

This ratio measures up to what extent of risk inherent in NPA is covered by the total loans provision.

$$\text{Pr ovision held to NPA} \times \frac{\text{Total Pr ovision}}{\text{Nonperfor min g}}$$

v. Non-Performing Assets to Total Assets

This ratio indicates the ratio between the non-performing assets and total assets.

$$\text{NPA to Total Assets} = \frac{\text{Total Nonperforming Asset}}{\text{Total Assets}}$$

vi. Return on loans and Advances

This ratio indicates the proportion of the return over total loans and advances. It describes how efficiently the bank has employed its resources in the form of loans and advances of the bank.

$$\text{Return on Loans and Advances} = \frac{\text{Net Profit}}{\text{Total loans \& advances}}$$

3.5.2 Statistical Tools

It is the mathematical technique used to facilitate the analysis and interpretation of the performances of the organization. It helps to compare the performance, strengthen, weakness of the organization. It also helps to present the data, show the relation and deviations or differences of variables of organizations. In this study, the following statistical tools are used:

3.5.2.1 Arithmetic Means (average):

Arithmetic mean is also called 'the mean' or 'average' as most popular and widely used measure of central tendency. Arithmetic Mean is statistical constants which enables us to comprehend in a single effort of the whole. Arithmetic mean represents the entire data by a single value. It provides the gist and gives the birds' eye view of the huge mass of a widely numerical data. It is calculated as:

$$\bar{X} = \frac{1}{n} \sum_{i=1}^n X_i$$

Where:

\bar{X} = mean value or arithmetic mean

$\sum_{i=1}^n X_i$ = sum of the observation

N = number of observation

3.5.2.2 Standard Deviation:

The standard deviation is the absolute measure of dispersion in which the drawback present in other measure of dispersion as it satisfied most of the requisites of a good measure of dispersion. Standard deviation is defined as the positive square root of the mean of square of the deviation take from the arithmetic mean. It indicates the ranger and size of deviance from the middle or mean. It measures the absolute dispersion. Higher the standard deviation higher will be the variability and vice versa.

$$\dagger \text{ X } \sqrt{\frac{\sum (X - \bar{X})^2}{N}}$$

Where, † X S tandardDeviation

X= Observation

\bar{X} = Mean Return

N= No. of Observation

3.5.2.3. Correlation Coefficient (r):

Correlation is the degree of linear relationship existing between two or more variables. These variables are said to be correlated when the change in the value of one results change in another variable. Correlation is categorized three types. They are Simple, Partial and Multiple correlations. Correlation may be positive, negative or zero. Correlation can be classified as linear or non- linear. Here, we study simple correlation only. In simple correlation the effect of others is not included rather these are taken as constant considering them to have no serious effect on the dependent.

Formula,

$$r_{X_1X_2} = \frac{N \sum X_1X_2 - \sum X_1 \sum X_2}{\sqrt{N \sum X_1^2 - (\sum X_1)^2} \sqrt{N \sum X_2^2 - (\sum X_2)^2}}$$

Where,

$r_{X_1X_2}$ = Correlation between X_1 and X_2

$N \sum X_1X_2$ = No. of Product observation and Sum of product X_1 and X_2

$\sum X_1 \sum X_2$ = Sum of Product X_1 and sum of Product X_2

The Karl Pearson coefficient of correlation always falls between -1 to +1.

If $r = 0$, there is no relationship between the variables.

If $r < 0$ there is negative relationship between the variable

If $r > 0$ there is positive relationship between the variable

If $r = -1$ the relationship is perfectly negative co-relation between the variable.

If $r = +1$ the relationship is perfectly positive co-relation between the variable

3.5.2.4. Coefficient of Variation (c.v.):

The coefficient of variation is measures the relative measures of dispersion, hence capable to compare two variables independently in term of variability.

$$C.V = \frac{s}{x} * 100$$

= Standard deviation

x = mean return of the observation

3.5.2.5. Probable Error (P.E.)

The probable error of the coefficient of correlation helps in interpreting its value. With the help of probable error, it is possible to determine the reliability of the value of the coefficient. The probable error of the coefficient of correlation is obtained as follows:

$$P.E. = 0.6745$$

Here, r = Correlation coefficient

N = Number of pairs of observations

If the value of ' r ' is less than the probable error, there is no evidence of correlation, i.e., the value of ' r ' is not at all significant. Then, if the value of ' r ' is more than six times of the probable error, the coefficient of correlation is practically certain, i.e., the value of ' r ' is significant.

3.5.2.6 Times Series Analysis (Trend Analysis)

Time series is used to measure the change of financial, economical as well as commercial data.

The least square method to trend analysis has been used in measuring the trend analysis. This method is widely used in practice. The straight line trend of a series of data is represented by the following formula.

$$Y = a + bx$$

Here, Y is the dependent variable,

Where,

Y = Trend value

a = y intercept

b = slope of trend line of the amount of change in y variable that is an associate with change in 1 unit in X variable.

X = Time variable

3.5.2.7. Diagrammatic and Graphical Representation:

Picture speaks itself, no need to explain. It is also one of the tools that helps to interpretation of the data and present the findings of the study. The various bars, charts, and graphs are also used to present the data and data analysis in this study.

CHAPTER - IV

DATA PRESENTATION AND ANALYSIS

4.1 Introduction

After acquiring the relevant data from different sources, they have to be proceed and analyzed in order to achieve the objectives of the study. In other words, once the data are collected from the different sources, they are classified according to some criteria. The main objectives of the data presentation and analysis are to keep them in understandable form or change it from and unprocessed form to an understandable presentation. Therefore, data presentation and analysis is an important aspect of study report.

Classification of data converts mass data into manageable form. Then they are presented tabular form. After data collection is completed, the collected data will be in the raw form. Therefore, here it is researcher's responsibility to process them into manageable form so that it can later be presented to readers of the study report. Different types of data need different types of method and technique, which can be used to present data. Of the various methods and technique, charts, graphs, and table are commonly used in presentation of data. Therefore, applying various statistical tools and technique makes the analysis of data. Such analysis arrange simple one like percentages, average, variation to complicate one like demanding, sophisticated technique. On the other hand, if the researcher has formulated hypothesis then based on analysis, the hypothesis will be tested. Then hypothesis compared with our conclusion and this hypothesis is either accepted or rejected. Hypothesis helps us to formulate a theory, to understand relationship between variables or to reach meaningful conclusion. If researcher has no hypothesis to test then the research findings will be interpreted. In conclusion, it can be said that data presentation and analysis is the backbone of the thesis. Presentation of data generally consists of tabulating, placing, and keeping them in presentable form by using figures and tables. Similarly, the analysis of data consists of organizing, tabulating, and performing statistical analysis.

4.2 Ratio Analysis

4.2.1 Loan and Advances to Total Assets Ratio

The loans and advances to total assets ratio measure the amount of loans and advances in total assets. It means that it shows the proportion of loans and advances to total assets. High degree of loans and advances indicates the good position of the organization that of good mobilization of deposits of funds. In inverse, low degree of loan and indicates that no use of fund properly. Loan is the risky assets. Thus, higher loans and advances to total assets ratio shows high risk and inversely low loans and advances to total assets ratio shows low risk.

The following table shows loan & advances to total assets of RBB and NABIL as follows.

Table: 4.2.1
Ratio of Loans and Advances to Total Assets

(Rs in Millions)

	RBB			NABIL		
	Loans and Advances	Total Assets	Ratio	Loans and Advances	Total Assets	Ratio
2005/06	27164.7	81087.1	33.5006	13239.4	24134.6	54.8565
2006/07	25422.3	72041.3	35.2885	15878.3	29660.4	53.5336
2007/08	27491.2	84686.2	32.4624	21769.7	38478.6	56.5761
2008/09	28209.9	86517.7	32.6059	25440.4	42464.1	59.9103
2009/10	35991.7	71920.0	50.0440	34109.7	51031.7	66.8402
Total	144279.8	396252.3	183.9016	110437.5	185769.4	291.7169
Mean	28855.9	79250.4	36.7803	22087.5	37153.8	58.3433
S.D			7.4996			5.3167
C.V			0.2039			0.0911

Source: Banking and Financial statistics-52 January 2010

Figure: 4.2.1

Ratio of Loans and Advances to Total Assets

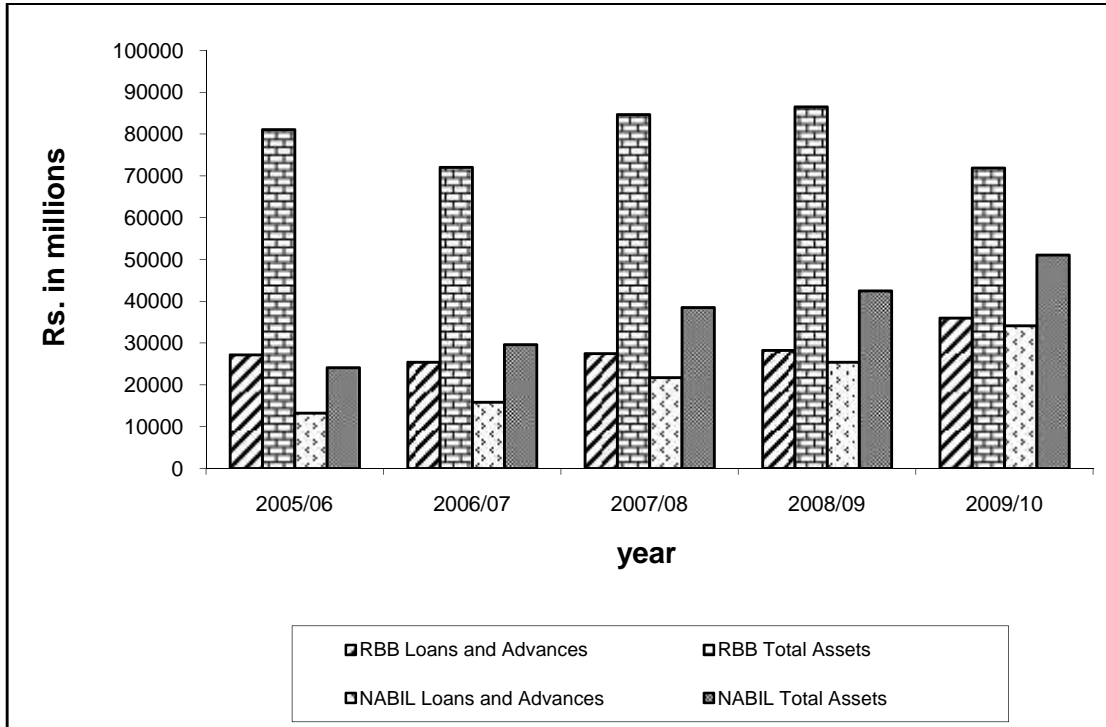


Table 4.2.1 shows the loans and advances to total assets ratio of RBB and NABIL banks for last five consecutive years. The loan & advances to total assets ratio of RBB and NABIL are in fluctuating trend during the study period. While observing their ratios NABIL is better mobilizing of fund as loans and advances and it seems quite successful in generating higher ratio in each year in comparison of RBB.

The highest ratio of RBB is 50.044% in the year 2009/10 and the lowest ratio is 32.46% year 2007/08, whereas the highest ratio is 66.84% in the year 2009/10 and the lowest ratio is 53.53% year 2006/07 of NABIL. The mean of RBB and NABIL are 36.7803% and 58.3433% respectively. So NABIL has higher ratio than that of RBB. It reveals that in total assets, NABIL has high proportion of loans and advances. NABIL has utilized its total assets more efficiently in the form of loan & advances. The higher C.V. of RBB states that it has less uniformity in these ratios throughout the study period than that of NABIL. S.D. and C.V. of RBB and NABIL have 7.4996%, 5.3167%, 0.2039, and 0.0911 respectively.

4.2.2 Loans and Advances to Total Deposit Ratio

The loans and advances to total deposit ratio is also known as credit deposit ratio (CD ratio). This ratio actually measures the extent to which the banks are successful to mobilize the total deposit on loan & advances for the purpose of profit generation. It is the proportion between the total loan latching and the total deposit in the banks. It can be calculated by dividing the total loans and advances by the total deposit amount. This ratio shows how successfully the banks are utilizing their deposited funds as credit or loan for profit generating purpose as loans and advances yield high rate of return. Greater CD ratio implies that better utilization of total deposit of banks and higher earnings from that loans and advances with the higher risk. A higher ratio of loan & advances indicates better mobilization of collection deposit and vice-versa. But it should be noted that too high ratio might not be better from its liquidity point of view. Following Table shows the loan & advances to total deposit ratio of related banks Thus, 70%-80% CD ratio is assumed as more suitable for the banks.

Table: 4.2.2

Ratio of Loans and Advances to Total Deposit

(Rs in Millions)

	RBB			NABIL		
	Loans and Advances	Total Deposit	Ratio	Loans and Advances	Total Deposit	Ratio
2005/06	27164.7	45700.7	59.4404	13239.4	19348.4	68.4263
2006/07	25422.3	50192.6	50.6494	15878.3	23342.4	68.0234
2007/08	27491.2	57990.8	47.4061	21769.7	31915.0	68.2114
2008/09	28209.9	61944.3	45.5407	25440.4	33848.5	75.1596
2009/10	35991.7	61209.7	58.8006	34109.7	42522.9	80.2149
Total	144279.8	277038.1	261.8372	110437.5	150977.2	360.0356
Mean	28855.9	55407.6	52.3675	22087.5	30195.5	72.0071
S.D			6.4340			5.4865
C.V			0.1229			0.0762

Source; Banking and Financial statistics-52 January 2010

Figure: 4.2.2

Ratio of Loans and Advances to Total Deposit

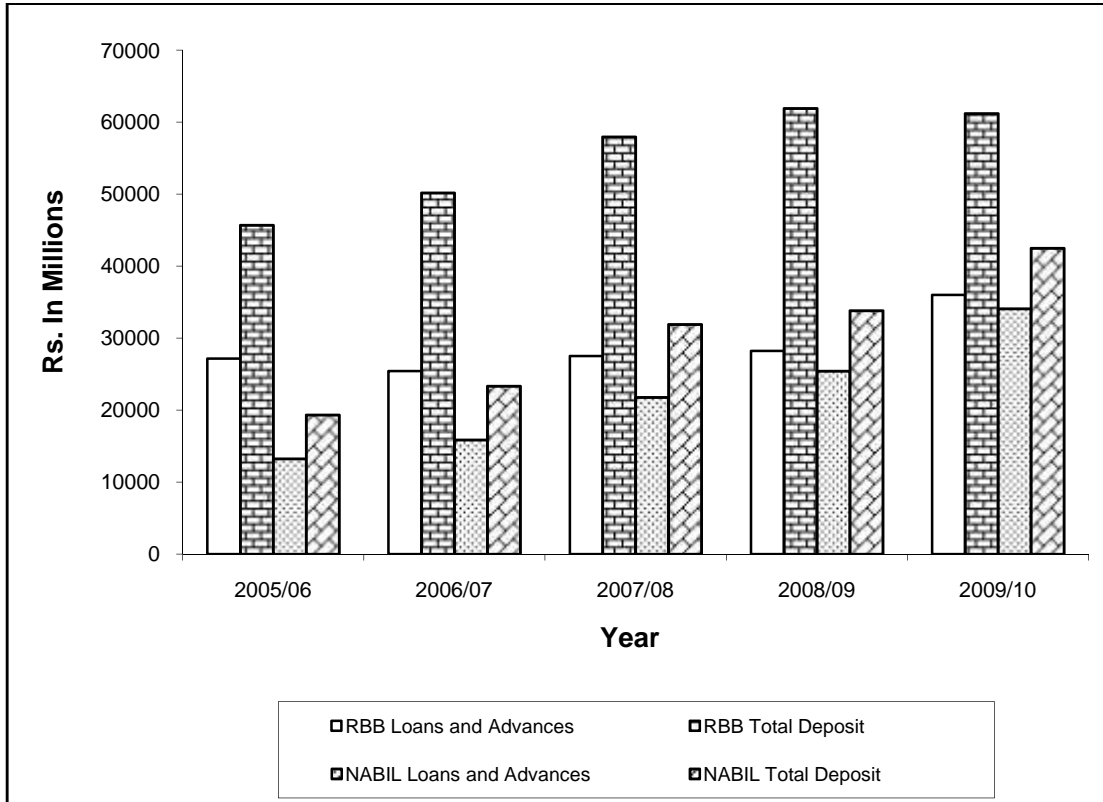


Table 4.2.2 shows that the loan & advances to total deposit ratio of RBB and NABIL is fluctuating trends. NABIL has higher ratio than that of RBB in each year and mean too. It indicates the better mobilization of deposit by NABIL. The mean of RBB and NABIL are 52.3675% and 72.0071% respectively. The highest ratio of RBB is 59.4404% in Fiscal year 2005/06 and lowest ratio is 45.54% in 2008/09. Similarly highest ratio of NABIL is 80.2149% in 2009/10 and lowest ratio is 68.023% in Fiscal year 2006/07. So NABIL has higher ratio than that of RBB. It reveals that the deposit of NABIL is quickly converted in to loans and advances to earn income. . NABIL has the greater ratio mean, which signifies that the NABIL lend higher amount in the form of loans and advances to earn better returns. The RBB has the lower mean ratio among them. It provides lower amount in the form of loan. Thus, it can be said that the management of RBB is risk averse as compare to NABIL. The bank will be able to better mobilization of collected deposit if there is above 70% to 80% of loans and advances to total deposit according to NRB. So in all of the year the NABIL has met the NRB requirement or it has utilized its deposit to provide loan. But RBB has not met the NRB requirement or it has not

utilized its deposit to provide loan properly.

The S.D. and C.V of RBB is 6.4340, 0.1229 similarly NABIL has 5.4865, 0.0762 Thus, it signifies that RBB has higher deviation. The higher C.V. of NABIL shows the more inconsistency in the ratios with compare to RBB.

4.2.3 Non- Performing Assets to Total Loans and Advances

This ratio determines the proportion of non-performing assets in the total loans and advances portfolio. As per NRB directives, the loan falling under category of substandard, doubtful and loss are regarded as non-performing assets or loan. The higher ratio implies the bad quality of loan or assets of banks in the form of loans and advances where as lower ratio implies the better quality of assets of banks in the form of loans and advances. Hence, lower ratio is preferable as per international standard only 5% NPAs is allowed but in the case of Nepal, maximum 10% NPAs is acceptable. Table presented below, exhibits the ratio of non-performing assets to loans and advances of RBB and NABIL from five consecutive years.

Table: 4.2.3

Ratio of Non- Performing Assets to Total Loans and Advances

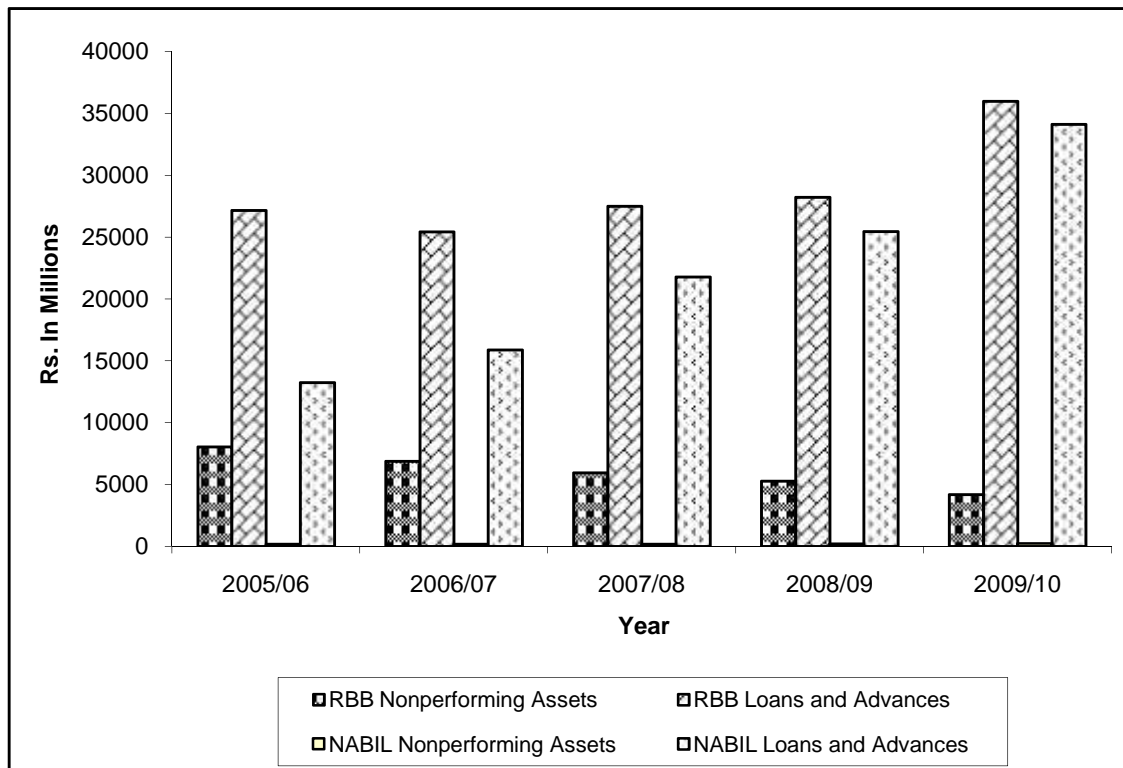
(Rs in Millions)

	RBB			NABIL		
	Nonperforming Assets	Loans and Advances	Ratio in %	Nonperforming Assets	Loans and Advances	Ratio in %
2005/06	8045.5	27164.7	29.6174	182.6	13239.4	1.3792
2006/07	6876.5	25422.3	27.0490	178.3	15878.3	1.1229
2007/08	5951.8	27491.2	21.6498	171.4	21769.7	0.7873
2008/09	5281.8	28209.9	18.7232	207.4	25440.4	0.8152
2009/10	4184.8	35991.7	11.6271	224.2	34109.7	0.6573
Total	30340.4	144279.8	108.6665	963.9	110437.5	4.7619
Mean	6068.1	28855.9	21.7333	192.78	22087.5	0.9524
S.D			7.0996			0.2934
C.V			0.3267			0.3081

Source: Banking and Financial statistics-52 January 2010

Figure: 4.2.3

Ratio of Non-Performing Assets to Total Loans and Advances



Table

4.2.3 shows that the RBB has the highest ratio throughout the study period and also shows the fluctuating trend of NPA. The highest ratio of RBB is 29.6174% in year 2005/06 and lowest ratio is 11.6271% in year 2009/10. The average mean ratio of RBB is 21.7333%. The S.D is 7.0996% and C.V. is 0.3267. Similarly, NABIL shows the least ratio during period. Mean ratio of NABIL is 0.9524% which is much lower than RBB. The highest ratio is 1.379% in 2005/06 and lowest ratio is 0.6573% in 2009/10.

We can say that RBB NPA to loans and advances is going on decreasing trend that is RBB performance is improving year by year.

The NABIL has the lower ratio, which indicates better quality of assets of banks in the form of loans and advances. It can be said that they are performing well or maintaining their NPAs perfectly. But the RBB has the high degree of NPL. The higher ratio implies the bad quality of loan or assets of banks in the form of loans and advances. The mean ratio of RBB is significantly high in comparisons to NABIL and it has critical condition. It is higher than the acceptable

standard of 10%. The S.D of RBB is high it signify the high variation in ratio. Among all NPA is the one of the main cause, which decreases the profit and fund would allocate for provision and it cause to become bank failure. Thus, they have to pay attention towards these matters.

4.2.4 Loan Loss Provision to Non-Performing Assets Ratio

The provision held to non-performing assets ratio shows the proportion of loan loss provision to non-performing assets of the banks. Every bank should have to make provision for the loan to minimize the risk of not recovering the loan from the customer on time. Thus, this ratio measures up to what extent of risk inherent in NPL is covered by the total loan loss provision. From this ratio it can be concluded that which banks make safeguard for the future contingencies. Higher ratio indicates that the banks are safeguard against future contingencies. Higher ratio indicates that the banks are safeguard against future contingencies that may create due to non-performing loan. Thus, higher ratio shows better financial position of banks and lower ratio shows weak in financial position.

Table: 4.2.4
Ratio of Provision Held to Non-Performing Assets
(Rs in Millions)

	RBB			NABIL		
	Loan Loss Provision	Nonperforming Assets	Ratio in %	Loan Loss Provision	Nonperforming Assets	Ratio
2005/06	13593.1	8045.5	168.9528	352.9	182.6	193.2639
2006/07	8967.5	6876.5	130.4079	356.3	178.3	199.8317
2007/08	7709.4	5951.8	129.5305	404.6	171.4	236.0560
2008/09	7407.3	5281.8	140.2419	462.4	207.4	222.9508
2009/10	4936.9	4592.2	107.5062	441.6	224.2	196.9670
Total	42614.2	30747.8	676.6393	2017.8	963.9	1049.069
Mean	8522.9	6149.6	135.3279	403.6	192.8	209.8139
S.D			22.2859			18.7071
C.V			0.1647			0.0892

Source: Banking and Financial statistics-52 January2010

Figure: 4.2.4
Ratio of Provision Held to Non-Performing Assets

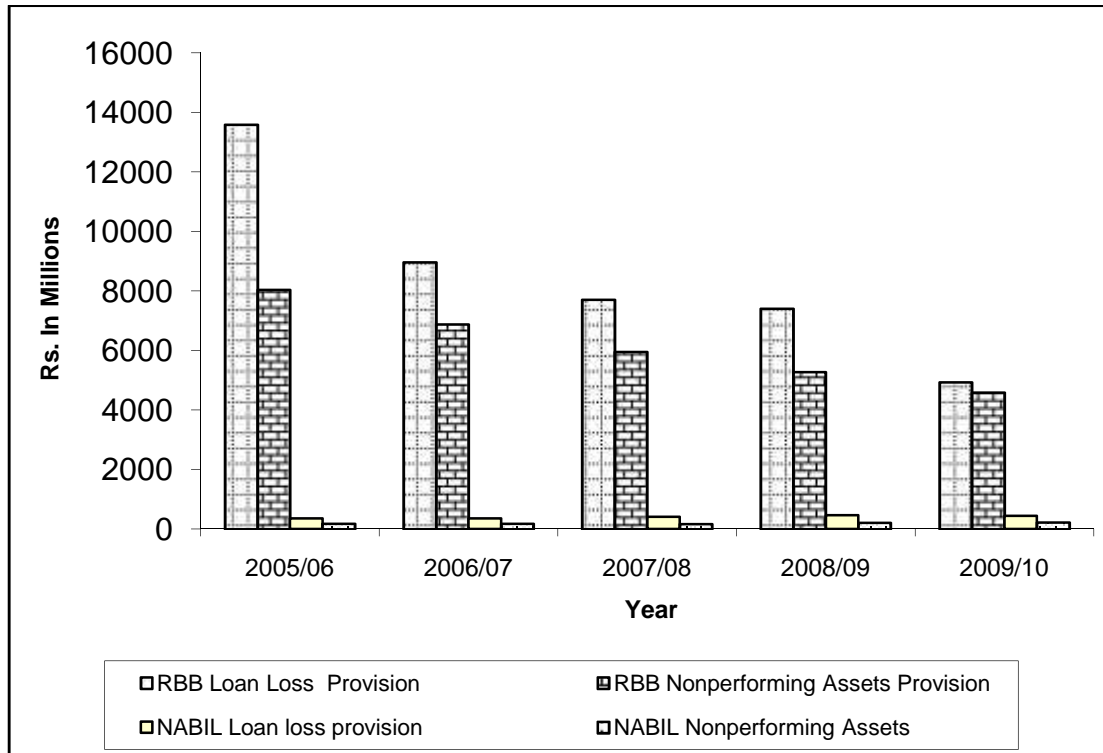


Table 4.2.4 presents the ratio of provision held to total non-performing assets of RBB and NABIL for 5 consecutive years. Throughout the study period, the RBB has the highest ratio than the NABIL. The highest ratio is 168.95 in 2005/06 and lowest ratio is 107.5062% in year 2009/10. The average mean ratio of RBB is 135.3279%. The standard deviation is 22.2859% and C.V. is 0.1647. Similarly, the mean ratio of NABIL is 209.8139% respectively. The highest provision i.e. ratio is 236.056% in 2007/08 and lowest ratio is 193.26% in 2005/06. The S.D of NABIL 18.7071% and coefficient of variation is 0.0892 respectively. It indicates NABIL Bank has appropriate provision for non-performing assets. The ratio of RBB has significantly high in comparison with NABIL banks and it's portraying that the bank has adequate provision against non-performing loan. RBB has high ratio of NPL as so bank has make high provision as well. It means that both banks try to maintain the higher ratio for the safeguard of loan loss.

4.2.5 Non-Performing Assets to Total Assets Ratio

This ratio represents the proportion between the non-performing assets and total assets of banks. It shows the how many Assets are non-performing or idle in the total assets of banks. Higher NPA, to total assets ratio indicates the works performance, which reduces the profitability of the banks. Lower ratio indicates the better performance and higher profitability of the banks. Thus, lower NPA to total assets ratio is better for the banks that exhibits the better profitability.

Table 4.2.5 presented below, exhibits the non-performing assets to total assets ratio of RBB and NABIL for five consecutive periods. The RBB has the approximately highest ratio than the NABIL. The ratio of NABIL continuously decreasing it indicates that bank has proper utilized and invests the Assets. The S.D of NABIL 0.1343% and coefficient of variation is 0.2459 respectively. The NABIL has the lowest and decreasing ratio all over the period that indicates the greater profitability and the better performance to recover the loan and its interest during the study period.

The average mean ratio of RBB is 7.7971% the highest ratio is 9.9220% in 2005/06 and lowest ratio is 6.10 in year 2008/09. The S.D of RBB 1.8042% and coefficient of variation is 0.2314 respectively. RBB has the highest ratio, which shows the bad performances and lower profitability on its Assets.

Table 4.2.5
Ratio of Non-Performing Assets to Total Assets

(Rs in Millions)

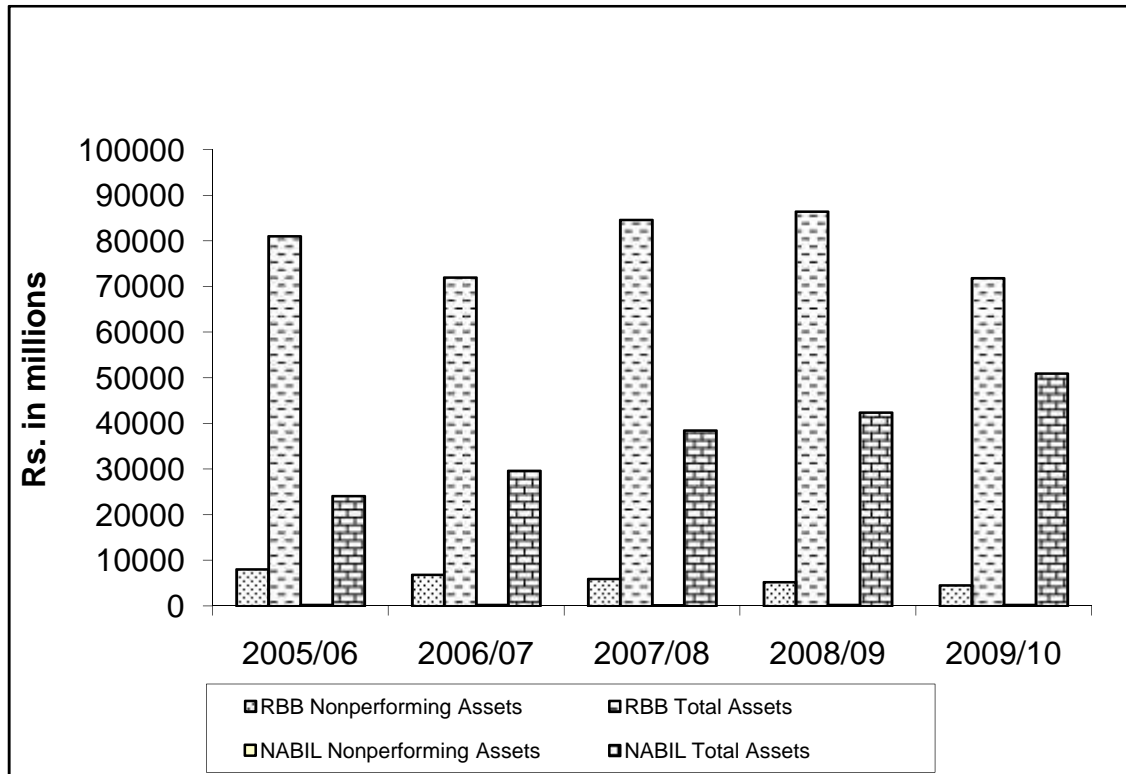
Year	RBB			NABIL		
	Nonperforming Assets	Total Assets	Ratio in %	Nonperforming Assets	Total Assets	Ratio in %
2005/06	8045.5	81087.1	9.9220	182.6	24134.6	0.7565
2006/07	6876.5	72041.3	9.5452	178.3	29660.4	0.6011
2007/08	5951.8	84686.2	7.0280	171.4	38478.6	0.4454
2008/09	5281.8	86517.7	6.1048	207.4	42464.1	0.4884
2009/10	4592.2	71920.01	6.3852	224.2	51031.7	0.4393
Total	30747.8	396252.3	38.9852	963.9	185769.4	2.7307
Mean	6149.6	79250.5	7.7971	192.8	37153.9	0.5462
S.D			1.8042			0.1343

C.V			0.2314			0.2459
-----	--	--	--------	--	--	--------

Source: Banking and Financial statistics-52 January 2010

Figure: 4.2.5

Ratio of Non-Performing Assets to Total Assets



Thus,

The NABIL has the lowest ratio all over the period that indicates the greater profitability and the better performance to recover the loan and its interest during the study period. RBB has the highest ratio, which shows the bad performances and lower profitability on its Assets. RBB has the highest deviation it signifies that the greater variability in this ratio.

4.2.6 Return on Total Loans and Advances Ratio.

This ratio indicates how efficiently the bank has employed its resources in the form of loans and advances. This ratio is calculated by dividing the net profit of the bank by total loans and advances. Net profit refers to that profit, which is obtained after all types of deduction like employees bonus, tax provision etc. Hence, this ratio measures bank's profitability with respect to loans and advances, higher the ratios better the performance.

Table 4.2.6 below represents that the NABIL has the highest ratio through the study period. The highest ratio is 7.3953% in 2005/06 and lowest ratio is 2.2656% in 2009/10 study period. The ratio is continuously decreasing. The average mean ratio of NABIL is 4.0146%. The S.D of NABIL is 2.0477% and coefficient of variation is 0.5101 respectively. Lower S.D. and higher C.V. indicate not variability in ratio of NABIL.

Similarly, RBB shows the fluctuating trend in whole study period. The mean ratio of RBB is 5.7094%. The highest ratio is 7.177 in 2005/06 and lowest ratio is 3.4825% in 2009/10 respectively. The S.D of RBB is 1.7404% and C.V is 0.3048 respectively. Thus, it signifies that along with the lower return and high degree of variation in this ratio.

Table: 4.2.6
Ratio of Return on Total Loans and Advances

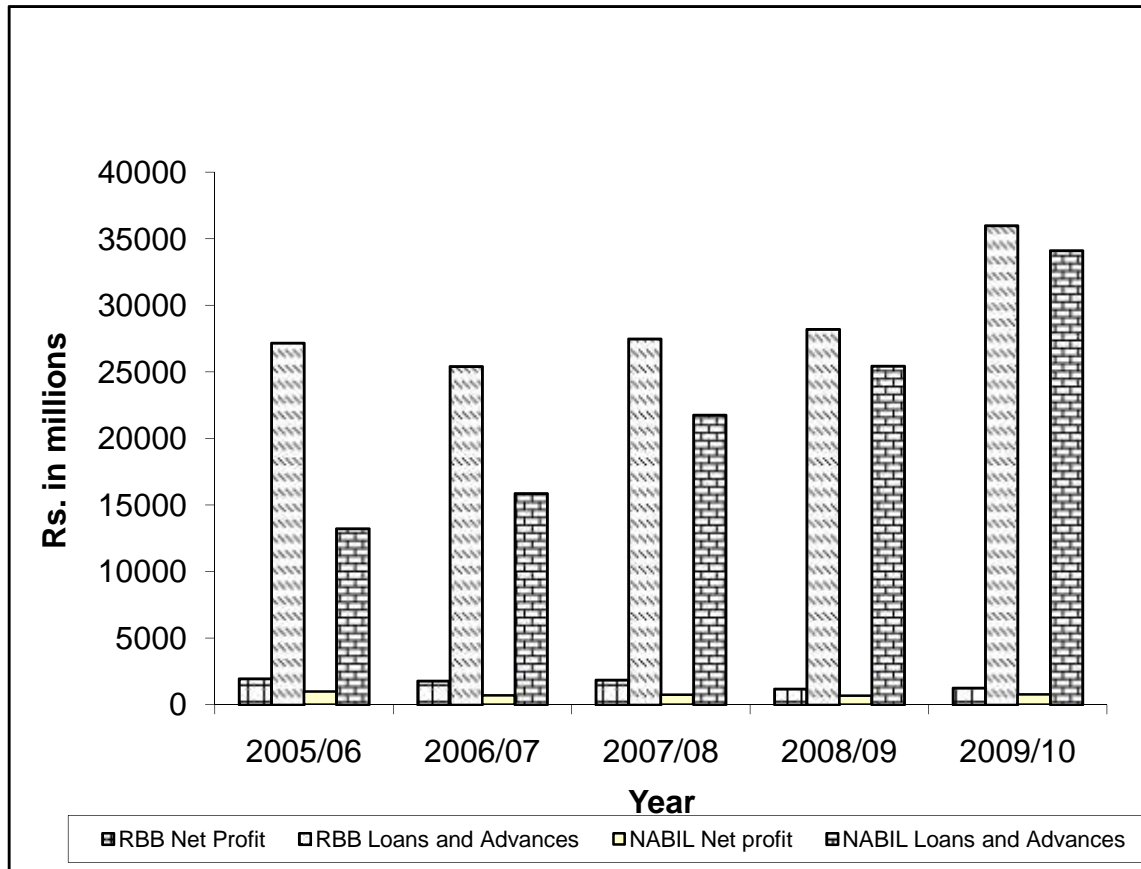
(Rs in Millions)

Year	RBB			NABIL		
	Net Profit	Loans and Advances	Ratio	Net profit	Loans and Advances	Ratio
2005/06	1949.7	27164.7	7.1773	979.1	13239.4	7.3953
2006/07	1777.1	25422.3	6.9903	685.6	15878.3	4.3178
2007/08	1846.9	27491.2	6.7181	750.4	21769.7	3.4469
2008/09	1178.8	28209.9	4.1786	673.5	25440.4	2.6473
2009/10	1253.4	35991.7	3.4825	772.8	34109.7	2.2656
Total	8005.9	144279.8	28.5468	3861.4	110437.5	20.0729
Mean	1601.2	28855.9	5.7094	772.3	22087.5	4.0146
S.D			1.7404			2.0477
C.V			0.3048			0.5101

Source: Banking and Financial statistics-52 January 2010

Figure: 4.2.6

Ratio of Return on Total Loans and Advances



The NABIL has the high ratio more over the period that indicates the greater profitability and the better performance to recover the loan and its interest during the study period. RBB has the more flotation ratio, which shows the bad performances and lower profitability on its Assets. RBB has the highest deviation it signifies that the greater variability in this ratio. It can be concluded that RBB seems better than NBIL and RBB is continuously increasing its ratio i.e. return through loans and advances.

As from the table 4.2.6 ratio analysis it is concluded that, the loans and advances to total assets ratio of RBB and NABIL are in fluctuating trend during the study period. The mean of RBB and NABIL are 36.7803% and 58.3433% respectively. While observing their ratios NABIL is better mobilizing of fund as loans and advances in total assets and it seems quite successful in generating higher ratio in each year in comparison of RBB.

The loans and advances to total deposit ratio of RBB and NABIL is fluctuating trends. The mean of RBB and NABIL are 52.3675% and 72.0071% respectively. So NABIL has higher ratio than that of RBB. It indicates the better mobilization of deposit or converted in to loans and advances to earn income by NABIL. The S.D. and C.V of RBB is 6.4340%, 0.1229 similarly NABIL has 5.4865%, 0.0762. Thus, it signifies that RBB has higher deviation. The higher C.V. of RBB shows the more inconsistency in the ratios with compare to NABIL.

The average mean ratio of non-performing assets to total loans and advances of RBB is 21.7333%. The S.D is 7.0996% and C.V. is 0.3267. Similarly, NABIL has high mean ratio of non-performing assets to total loans and advances are 0.9524%, which is much lower than RBB. The S.D of NABIL is 0.2934% and C.V is 0.3081 respectively. It can be said that NABIL performing well or maintaining their NPAs perfectly. But the RBB has the high degree of NPL. The higher ratio implies the bad quality of loan or assets of banks in the form of loans and advances. It is higher than the acceptable standard of 10%. The S.D of RBB is high it signify the high variation in ratio.

The ratio of provision held to total non-performing assets for the NABIL has the highest ratio than the RBB. The average mean ratio of RBB is 135.3279%. The standard deviation is 22.2859% and C.V. is 0.1697. It indicates NABIL Banks has appropriate provision for non-performing asset. The mean ratio of NABIL is 209.8139% respectively. The S.D of NABIL is 18.7071% and coefficient of variation is 0.892 respectively. NABIL has high ratio of NPL as so banks has make high provision as well.

In the form of non-performing assets to total assets ratio of NABIL and RBB. The RBB has the approximately highest ratio than the NABIL. The mean ratio of non-performing asset to total asset of Nabil is 0.5462%. The ratios of NABIL continuously decreasing it indicate that banks have proper utilized and invest the assets. The S.D of NABIL 0.1343% and C.V. is 0.2459 respectively. NABIL has the lowest ratio with decreasing. The average mean ratio of RBB is 7.7971%. The S.D of RBB 1.8042% and C.V. is 0.2314 respectively. RBB has the highest ratio, which shows the bad performances and lower profitability on its assets.

The ratio of returns on loans and advances show how much banks making earning through providing loans and advances. The NABIL has the highest ratio through the study period. The

average mean ratio of NABIL is 4.0146%. The S.D of NABIL is 2.0477% and C. V. is 0.5101 respectively. Low S.D. and higher C.V. indicate not variability in ratio of NABIL. The mean ratio of RBB is 5.7094%, The S.D is 1.7404% and C.V is 0.3048 respectively. Thus, it signifies that along with the lower return and high degree of variation in this ratio.

4.3 Correlation Analysis

4.3.1 Coefficient of Correlation between Total Deposit and Loans and Advances

Deposit have played very important role in performance of a commercial banks and similarly loan & advances are very important to mobilize the collected deposits. Co-efficient of correlation between deposit and loan & advances measures the degree of relationship between these two variables. In this analysis, deposit is independent variable (X) and loan & advances are dependent variable (Y). The main objectives of computing 'r' between these two variables is to justify whether deposit are significantly used as loan & advances in proper way or not.

Table: 4.3.1
Correlation between Deposit and Loan & Advances

	Evaluation Criterions			
	r	R ²	P.Er.	6 P.Er.
RBB	0.577104	0.33305	0.201183	1.207095
NABIL	0.990463	0.981016	0.005726	0.034359

Source: BY SPSS Data Editor

From the above table 4.3.1 it is found that coefficient of correlation between deposits and loan & advances of RBB and NABIL is 0.5771 and 0.9904. It is shows that both have the positive relationship between these two variables. It refers that deposit and loan & advances of RBB and NABIL move together very closely. RBB have also low degree positive correlation Moreover, the coefficient of determination of RBB is 0.33305. It means 33.30 % of variation in loan & advances has been explained by deposit. The relationship is insignificant because the coefficient of correlation is less than 6 P.Er. Similarly, value of coefficient of determination of NABIL is 0.9810. It refers that 98.10% variance in loan & advances are affected by total deposit. The coefficient of determination NABIL banks is significant because the correlation coefficient is

greater than the relative value of 6 P.Er. In other words, there is significant relationship between deposits and loan & advances.

4.3.2 Co-efficient of Correlation between Loans and Advances and Net Profit

Co-efficient of correlation between total assets and net profit is used to measure the degree of relationship between two variable i.e. loans and advances and net profit of RBB and NABIL during the study period. Where loans and advances are independent variable (X) and net profit is dependent variable (Y). The main objective of calculating this ratio is to determine the degree of relationship whether there the net profit is significantly correlated or not and the variation of net profit to loans and advances through the coefficient of determination. The following table shows the 'r', R^2 , P.Er. And 6 P. Er. Between the variables of RBB and NABIL for the study period.

Table: 4.3.2
Correlation between Loans and Advances and Net profit

	Evaluation Criteria			
	r	R^2	P.Er.	6 P.Er.
RBB	-0.63405	0.402025	0.180377	1.082259
NABIL	-0.39622	0.156989	0.254291	1.525743

Source: BY SPSS Data Editor

Table 4.3.2 shows correlation coefficient between, loans and advances and net profit. The correlation coefficient between, loans and advances and net profit is -0.63405 of RBB. It refers that there is negative correlation between these two variables. Here, 40.20% of net profit is contribute by loans and advances as its coefficient of determination of 0.4020 shows. Moreover, this relationship is insignificant because the coefficient of correlation is less than 6 P.Er. Likewise, NABIL has also low negative correlation i.e. -0.39622 between loans and advances and net profit. The coefficient of determination R^2 is 0.156989 which indicates that 15.69% variability in net profit is explained by loans and advances. Less correlation coefficient than 6P.Er. Shows that the relationship between loans and advances and net profit is insignificant for NABIL. In conclusion, RBB and NABIL have insignificant relationship between loans and advances and net profit.

4.3.3 Correlation between Loan Loss Provision and Loan & Advances

The correlation between total provision and loan & advances show the degree of relationship between these two items. How a unit increment in loans and advances affect the total provision is measured by this correlation. Here loan & advances is independent variable and total provision is dependent variable

Table: 4.3.3
Correlation between Total provision and Loans and Advances

	Evaluation Criterions			
	R	R ²	P.Er.	6 P.Er.
RBB	-0.64457	0.415474	0.17632	1.057918
NABIL	0.857819	0.735853	0.079679	0.478073

Source: BY SPSS Data Editor

Table 4.3.3 shows correlation coefficient between, total provision and loans and advances. The correlation coefficient between, total provision and loans and advances is -0.64457 of RBB. It refers that there is negative correlation between these two variables. Here, 41.54% of provision is contributed by as loans and advances its coefficient of determination of 0.415474 shows. Moreover, this relationship is insignificant because the coefficient of correlation is less than 6 P.Er. Likewise NABIL has positive correlation i.e. 0.857819 between total provisions and loans and advances. The coefficient of determination R² is 0.735853, which indicates that 73.58% variability in Provision is explained by loans and advances. NABIL bank has more correlation coefficient than 6P.Er. shows that the relationship between total provision and loans and advances is significant.

4.3.4 Correlation between loan loss provision and NPA

The correlation between LPP and NPA shows the relationship of them. How a unit of LLP effect the NPA is exhibited by this correlation. In this case, NPA is the independent variable and LLP is the dependent variable. As earlier mentioned NPA are the loan falling on the category of substandard, doubtful and loss loan and the respectively provisioning requirement is 25%, 50% and 100% respectively. Higher the NPL higher will be the provisioning amount.

Table: 4.3.4
Correlation between Loan Loss Provision and Non-Performing Assets

	Evaluation Criteria			
	R	R ²	P.Er.	6 P.Er.
RBB	0.963609	0.928543	0.021555	0.129328
NABIL	0.739054	0.5462	0.136887	0.821321

Source: BY SPSS Data Editor

Table 4.3.4 shows the relationship between LLP & NPA of RBB and NABIL. The correlation between LLP & NPA of RBB is 0.963609. It refers that there is positive correlation between these two variables. The coefficient of determination of RBB is 0.928543. The relationship between LLP & NPA is significant because the coefficient of correlation is more than 6 P.Er i.e. $0.963609 > 0.129328$. Likewise NABIL has positive correlation i.e. 0.739054 between loan loss provision and non-performing assets. The coefficient of determination R² is 0.5462 which indicates that 54.62% variability in Provision is explained by non-performing assets. The coefficient of correlation is less than 6P.Er. So the relationship between loan loss provision and non-performing assets is insignificant. RBB has the higher degree of NPA in comparison to NABIL.

4.3.5 Correlation between Non-Performing Assets and Loans and Advances

This correlation coefficient shows the degree of relationship between the NPA and loan & advance. The NPA is independent variable(X) and loan & advance is dependent (Y) variable. It shows how a unit of change of loan & advance effects to the NPA and what is the relation of them. It means how is effected the NPA due to the change (increase or decrease) of loans and advances of banks.

Table: 4.3.5

Correlation between Non-Performing Assets and Loans and Advances

	Evaluation Criteria			
	R	R ²	P.Er.	6 P.Er.
RBB	-0.71627	0.513043	0.146889	0.881331
NABIL	0.836751	0.700153	0.090448	0.542686

Source: BY SPSS Data Editor

Table 4.3.5 shows correlation between non-performing assets and loans and advances. Non-performing assets and loans and advances of RBB is -0.71627. It refers that there is negative

correlation between these two variables. Here, coefficient of determination is 0.513043, which indicate 51.30% of non-performing assets is contributed by as loans and advances. Moreover, this relationship is insignificant because the coefficient of correlation is less than 6 P. Er. In the case of NABIL there is positive correlation i.e. 0.836751 between non-performing assets and loans and advances. The coefficient of determination R^2 is 0.700153, which indicates that 70.01% variability in non-performing assets is explained by loans and advances. The relationship is significant because the coefficient of correlation is little greater than 6 P.Er .i.e. $0.836751 < 0.542686$. As a whole there are significant correlation coefficient of NABIL bank between non-performing assets and loans and advances and insignificant correlation coefficient of RBB during the study.

4.3.6 Correlation between Non-Performing Assets (NPA) and Total Assets

The correlation coefficient shows the degree of relationship between the NPA and total assets for the study period. In this correlation coefficient, NPA is an independent variable and a total asset is dependent variable. It shows how units of change in total assets affect the NPA

Table: 4.3.6

Correlation between Non-Performing Assets and Total Assets

	Evaluation Criteria			
	R	R^2	P.Er.	6 P.Er.
RBB	0.060733	0.003688	0.300533	1.803198
NABIL	0.772776	0.597183	0.121508	0.729048

Source: BY SPSS Data Editor

Table 4.3.6 shows the relationship between the non-performing assets and total assets of RBB and NABIL for five consecutive. The correlation between NPA and total assets of RBB is 0.060733. It refers that there is positive correlation between these two variables. The coefficient of determination of RBB is 0.003688, which indicate total assets contribute 0.3688% of non-performing assets. The relationship between LLP & total assets of RBB is insignificant because the coefficient of correlation is less than 6 P.Er i.e. $0.060733 < 1.803198$. Likewise, NABIL has positive correlation i.e. 0.772776 between the non-performing assets and total assets. The coefficient of determination R^2 is 0.597183 which indicates that 59.71% of non-performing

assets is explained by total assets. The coefficient of correlation is greater than 6P.Er. So the relationship between non-performing assets and total assets is significant.

The RBB has 0.3688% of non-performing assets contribute by total assets but NABIL has 59.71% percent of nonperforming assets is contribute by total assets. NABIL has the higher degree of NPA to total assets in comparison to RBB.

In conclusion, as from correlation analysis it is found out that, the coefficient of correlation between deposits and loans and advances of RBB and NABIL is 0.5771 and 0.9904. It shows that both have the positive relationship between these two variables. The coefficient of determination of NABIL is 0.981016. Similarly, value of coefficient of determination of RBB is 0.33305. The correlation coefficient of NABIL banks is significant because the correlation coefficient is greater than the relative value of 6 P.Er whereas correlation coefficient of RBB banks is insignificant because the correlation coefficient is lower than the relative value of 6 P.Er.

The correlation coefficient between, loans and advances and net profit is -0.63405 of RBB. It refers that there is negative correlation between these two variables. Here, 40.20% of net profit is contributed by loans and advances. The relationship is insignificant because the coefficient of correlation is less than 6 P.Er. NABIL have also negative correlation i.e. -0.39622. There is only 15.69% percent variability in net profit is explained by loans and advances. The relationship between loans and advances and net profit is insignificant due to less correlation coefficient is less than 6P.Er. In conclusion, NABIL and RBB both have insignificant relationship between loans and advances and net profit.

The correlation coefficient between, total provision and loans and advances is -0.64457 and 0.857819 of RBB and NABIL. It refers that there is negative and positive correlation between these two variables of RBB and NABIL respectively. Here, 41.54% of provision of RBB is contributed by as loans and advances and 73.58% variability in Provision of NABIL is explained by loans and advances. NABIL banks have more correlation coefficient than 6P.Er. shows that the relationship between total provision and loans and advances is significant but reverse in case of RBB.

The relationship between LLP and NPA of RBB and NABIL are positive direction. The correlation between LLP and NPA of RBB is 0.963609. It refers that there is positive correlation between these two variables. The coefficient of determination of RBB is 0.9285. The relationship between LLP and NPA is significant. NABIL has positive correlation i.e. 0.7390. The coefficient of determination is 0.5462. The coefficient of correlation is less than 6P.Er. So the relationship between Loan loss Provision and loans and advances is insignificant.

The correlation coefficient between, non-performing assets and loans and advances of RBB is - 0.71627. It refers that there is negative correlation between these two variables. Here, 51.30% of non-performing assets is contributed by as loans and advances. NABIL has positive correlation i.e. 0.8367 between non-performing assets and loans and advances. Here 70.01% variability in non-performing asset is explained by loans and advances. The relationships of NABIL bank is significant because the coefficient of correlation is little grater than 6 P.Er and RBB is insignificant because the correlation coefficient of RBB is less then 6P.Er.

The relationship between the non-performing asset and total assets of RBB and NABIL is positive. The correlation between NPA and total asset of RBB is 0.060733. It refers that there is Positive correlation between these two variables where, 0.3688% of non-performing assets is contributed by total assets. The relationship between NPA and total asset of RBB is insignificant. Likewise, NABIL has positive correlation i.e. 0.772776 between the non-performing asset and total assets. There is 59.71% percent of non-performing asset is explained by total asset. The coefficient of correlation is grater than 6P.Er. So the relationship between non-performing asset and total assets is significant.

4.4 Trend Analysis

Trend analysis is the statistical tools for the analyzing the data of selected banks in suitable manners. It helps to forecast the future value of bank of future expectation of different variables. It shows the behavior of different variables. It shows the behavior of the variables. It is based on the assumption that past tendencies continues in the future. In this study, data are presented for further eight years. For 2004/05 - 2008/09 and forecast is done on the basis of these trend lines.

4.4.1 Trend Analysis of Total Deposit

Deposits are the important part in banking sector hence its trend for next eight years will be forecasted for future analysis. This is calculated by the least square method. Here the effort has been made to calculate the trend values of total deposit of RBB and NABIL Bank Ltd for further eight year.

$$Y = a + bx$$

Where,

Y= dependent variable, a=Y-intercept, b=slope of trend line or annual growth rate,

X = deviation from some convenient time periods.

Let trend line be

$$Y = a + b x \dots\dots\dots (I)$$

Where $x = X - \text{Middle year}$

$$y = \frac{\sum y}{N}$$

$$N = \text{No. of Observation}$$

Here,

$$a = \frac{\sum y}{N}$$

$$b = \frac{\sum XY}{\sum X^2}$$

RBB

NABIL

$$a = 55407.62$$

$$a = 30195.44$$

$$b = 4276.97$$

$$b = 5685.51$$

Where as

$$Y_c = 55407.62 + 4276.97X \text{ of RBB}$$

$$Y_c = 30195.44 + 5685.51X \text{ of NABIL}$$

Table: 4.4.1

Trend Analysis of Total Deposit of RBB and NABIL

(Rs in Millions)

Year(x)	RBB	NABIL
2005/06	46853.68	18824.42
2006/07	51130.65	24509.93
2007/08	55407.62	30195.44
2008/09	59684.59	35880.95
2009/10	63961.56	41566.46
2010/11	68238.53	47251.97
2011/12	72515.5	52937.48
2012/13	76792.47	58622.99
2013/14	81069.44	64308.5
2014/15	85346.41	69994.01
2015/16	89623.38	75679.52
2016/17	93900.35	81365.03

Source: Banking and Financial statistics-52 January 2010

Figure: 4.4.1

Trend Analysis of Total Deposit of RBB and NABIL

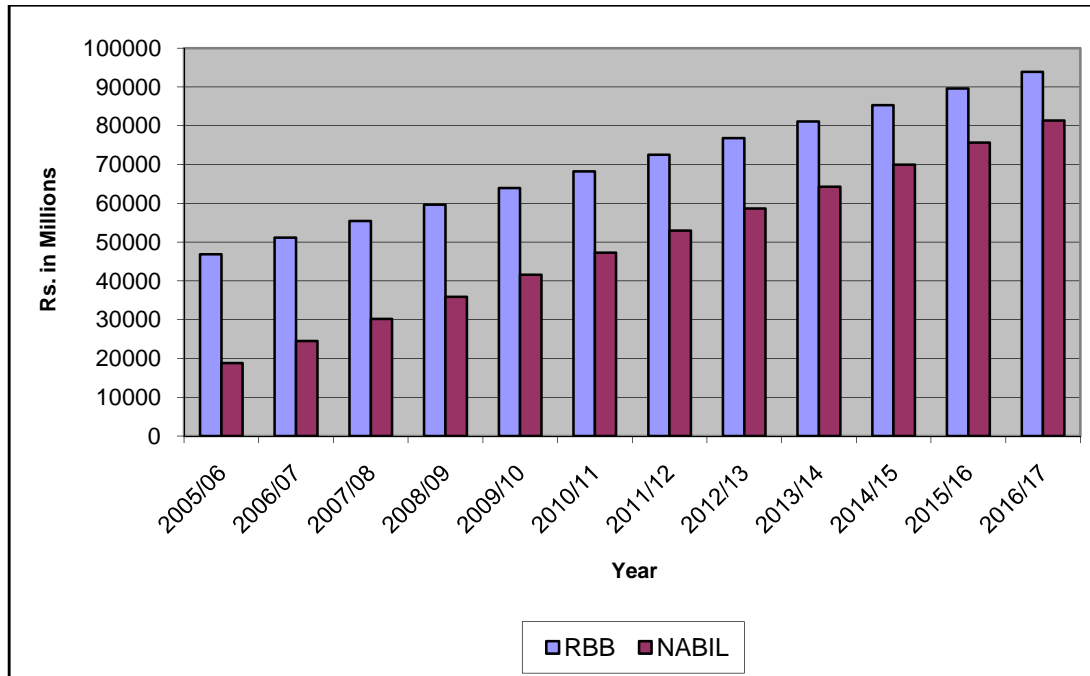


Table 4.4.1 shows that total deposit of RBB and NABIL. Both Banks is in increasing trend. The rate of increment of total deposit for NABIL seems to be higher than that of RBB. The increasing trend of total deposit of NABIL is more aggressive and high rather than RBB. It indicates NABIL has more prospect of collecting total deposit. The trend analysis has projected deposit amount in fiscal year FY 2009/10 to FY 2016/17. From the above trend analysis it is clear that NABIL has higher position in collecting deposit than RBB.

4.4.2 Trend Analysis of Loan & Advances

Here, the trend values of loan & advances Between RBB and NABIL have been calculated for further Eight year. The following Table shows the actual and trend values of

$$Y = a + bx$$

Where,

Y= dependent variable, a=Y-intercept, b=slope of trend line or annual growth rate,

X = deviation from some convenient time periods.

Let trend line be

$$Y = a + b x \dots \dots \dots (I)$$

Where x = X - Middle year

Here,

$$a = \frac{y}{N}$$

$$b = \frac{XY}{X^2}$$

RBB

$$a = 28855.96$$

$$b = 2044.16$$

$$Y_c = 28855.96 + 2044.16X \text{ of RBB}$$

$$Y_c = 22087.5 + 5130.27X \text{ of NABIL}$$

NABIL

$$a = 22087.5$$

$$b = 5130.27$$

Table: 4.4.2

Trend Analysis of Total Loans and Advances of RBB and NABIL

(Rs in Millions)

Year(x)	RBB	NABIL
2005/06	24767.64	11826.96
2006/07	26811.8	16957.23
2007/08	28855.96	22087.5
2008/09	30900.12	27217.77
2009/10	32944.28	32348.04
2010/11	34988.44	37478.31
2011/12	37032.6	42608.58
2012/13	39076.76	47738.85
2013/14	41120.92	52869.12
2014/15	43165.08	57999.39
2015/16	45209.24	63129.66
2016/17	47253.4	68259.93

Source: Banking and Financial statistics-52 January 2010

Figure: 4.4.2

Trend Analysis of Total Loans and Advances of RBB and NABIL Bank

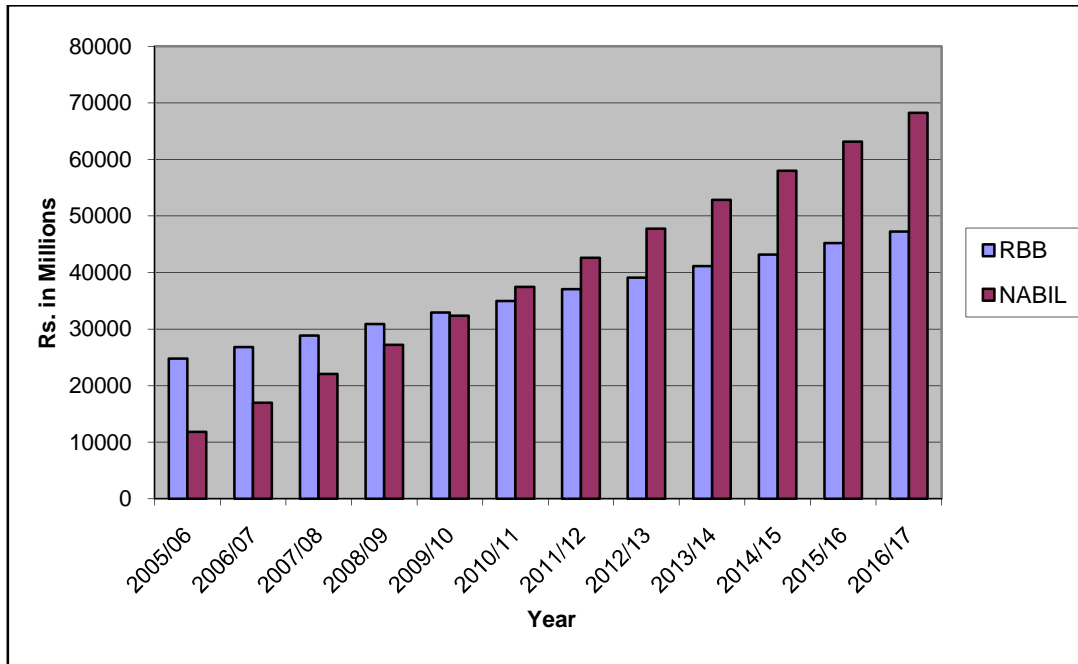


Table 4.4.2 depicts that loan & advances of RBB and NABIL. Both banks has in reverse trended i.e. RBB loans and advances is going on decreasing trends whereas NABIL is in increasing trend. The actual value of loan & advances for RBB is quite fluctuating and slow in relation to NABIL. The trend projected for father eight year FY 2008/09 to FY 2016/17 From the above analysis, it is clear that both RBB and NABIL is mobilizing its collected deposits and other funds in the form of loan & advances. Above table and figure shows the NABIL has highly mobilizing loan & advances than the RBB.

4.4.3 Trend Analysis of Net Profit

Here, the trend values of net profit of RBB and RBB have been calculated for five years FY 2003/04 to FY 2007/08 and forecasting for the next eight year till FY 2015/16.

$$Y = a + bx$$

Where,

Y= dependent variable, a=Y-intercept, b=slope of trend line or annual growth rate,

X = deviation from some convenient time periods.

Let trend line be

$$Y = a + b x \dots\dots\dots (I)$$

Where

$x = X$ - Middle year

Here,

$$a = \frac{y}{N}$$

$$b = \frac{XY}{X^2}$$

RBB

NABIL

$$a = 1601.20$$

$$a = 772.3$$

$$b = -199.09$$

$$b = -42.47$$

$$Y_c = 1601.20 - 199.09 X \text{ RBB}$$

$$Y_c = 772.3 - 42.47 X \text{ NABIL}$$

Table: 4.4.3

Trend Analysis of Net Profit of RBB and NABIL

(Rs in Millions)

Year(x)	RBB	NABIL
2005/06	1999.38	857.24
2006/07	1800.29	814.77
2007/08	1601.20	772.3
2008/09	1402.11	729.83
2009/10	1203.02	687.36
2010/11	1003.93	644.89
2011/12	804.84	602.42
2012/13	605.75	559.95
2013/14	406.66	517.48
2014/15	207.57	475.01
2015/16	8.48	432.54
2016/17	-190.61	390.07

Source; Banking and Financial statistics-52 January 2010

Figure: 4.4.3

Trend Analysis of Net Profit and NABIL and RBB

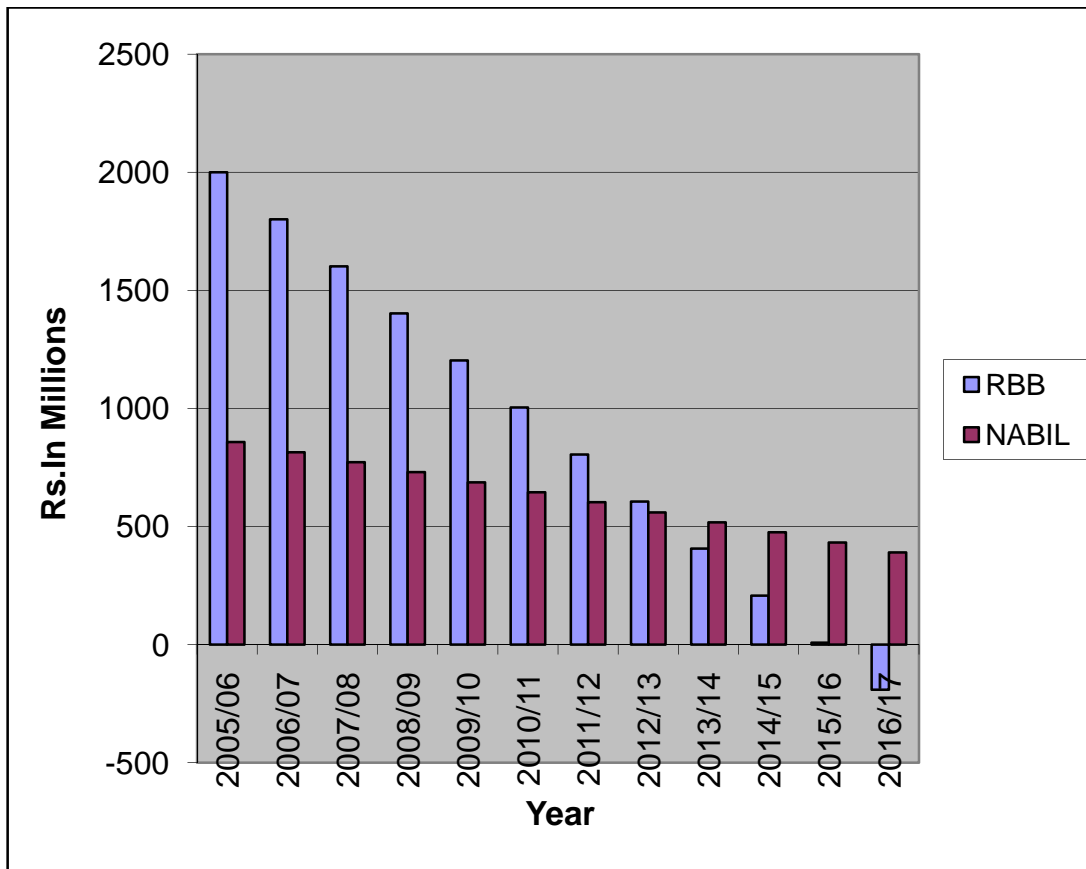


Table 4.3.18 reveals the trend of Net profit of RBB and NABIL. Net profit both bank forecasted in reverse trend. The trend of increasing value of net profit of RBB is higher and aggressive than NABIL. The net profit of RBB is increasing year to year and NABIL has been decreasing every year by year. The trend of Net profit projected to FY 2016/17 i.e. further Eight year. Above statistics shows that both the banks have inconsistent net profit throughout the study period. In conclusion, RBB is doing better in order to generate net profit during the projected study period in conclusion the prospect of profit generating capacity of RBB is higher than the NABIL.

4.4.4 Trend Analysis of Non- Performing Assets

Here, the trend values of non-performing assets of RBB and RBB have been calculated for five years FY 2003/04 to FY 2007/08 and forecasting for the next eight year till FY 2015/16.

Where,

Y= dependent variable, a=Y-intercept, b=slope of trend line or annual growth rate,

X = deviation from some convenient time periods.

Let trend line be

$$Y = a + b x \dots\dots\dots (I)$$

x = X - Middle year

$$a = \frac{y}{N}$$

$$b = \frac{XY}{X^2}$$

RBB

NABIL

a = 6149.60

a = 192.8

b = -850.13

b = 11.23

Yc = 6149.60- 850.13X RBB

Yc = 192.8+ 11.23X NABIL

Table: 4.4.4

Trend Analysis of Non-Performing Assets of RBB and NABIL

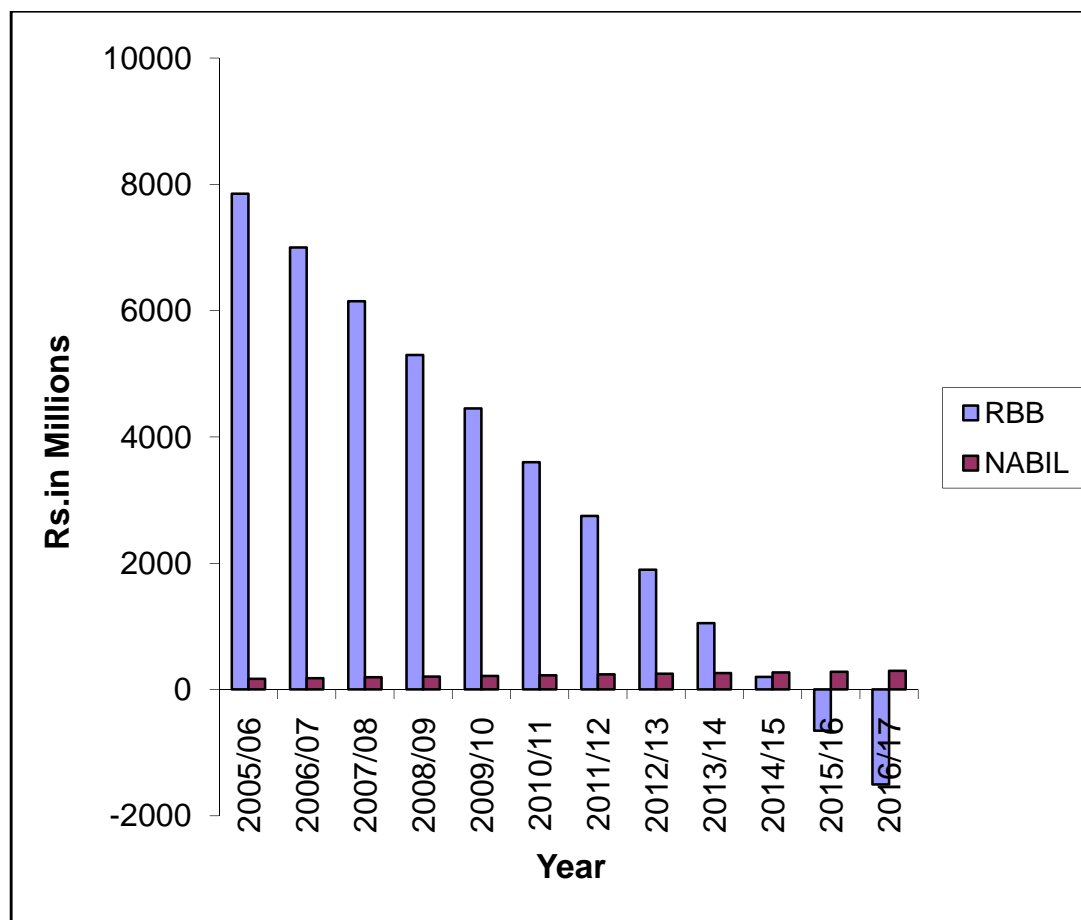
(Rs in Millions)

Year(x)	RBB	NABIL
2005/06	7849.86	170.34
2006/07	6999.73	181.57
2007/08	6149.60	192.8
2008/09	5299.47	204.03
2009/10	4449.34	215.26
2010/11	3599.21	226.49
2011/12	2749.08	237.72
2012/13	1898.95	248.95
2013/14	1048.82	260.18
2014/15	198.69	271.41
2015/16	-651.44	282.64
2016/17	-1501.57	293.87

Source; Banking and Financial statistics-52 January 2010

Figure: 4.4.4

Trend Analysis of Non-Performing Assets of RBB and Nabil Bank



The above table reveals the trend of non-performing assets of and NABIL. Non-performing assets of is forecasted in decreasing trend. The trend of non-performing assets of NABIL is estimated in increasing trend. The trend of non-performing assets of RBB is decreasing which indicate non-performing assets is regularly decreasing during the study period. The non-performing assets of NABIL have been increasing every year and RBB decreasing respectively. The trend of non-performing assets projected to FY 2016/17 i.e. further Eight year. Above statistics, shows that RBB is doing better by decreasing non-performing assets over the period. However, NABIL is increasing non-performing during the projected study.

4.4.5 Trend Analysis of Loan Loss Provision

Here, the trend values of loss loan provision of RBB and RBB have been calculated for five years FY 2005/06 to FY 2009/10 and forecasting for the next eight year till FY 2016/17.

$$Y = a + bx$$

Where,

Y = dependent variable, a = Y-intercept, b = slope of trend line or annual growth rate,

X = deviation from some convenient time periods.

Let trend line be

$$Y = a + b x \dots\dots\dots (I)$$

Where

$$x = X - \text{Middle year}$$

Here,

$$a = \frac{\sum y}{N}$$

$$b = \frac{\sum XY}{\sum X^2}$$

RBB

$$a = 8522.90$$

$$b = -1887.26$$

NABIL

$$a = 403.60$$

$$b = 28.35$$

$$Y_c = 8522.90 - 1887.26 X \text{ RBB}$$

$$Y_c = 403.60 + 28.35 X \text{ NABIL}$$

Table: 4.4.5

Trend Analysis of Loss Loan Provision between RBB and NABIL

(Rs in Millions)

Year(x)	RBB	NABIL
2005/06	7849.86	170.34
2006/07	6999.73	181.57
2007/08	6149.60	192.8
2008/09	5299.47	204.03
2009/10	4449.34	215.26
2010/11	3599.21	226.49
2011/12	2749.08	237.72
2012/13	1898.95	248.95
2013/14	1048.82	260.18
2014/15	198.69	271.41
2015/16	-651.44	282.64
2016/17	-1501.57	293.87

Source: Banking and Financial statistics-52 January 2010

Figure: 4.4.5

Trend Analysis of Loan Loss Provision of RBB and NABIL Bank

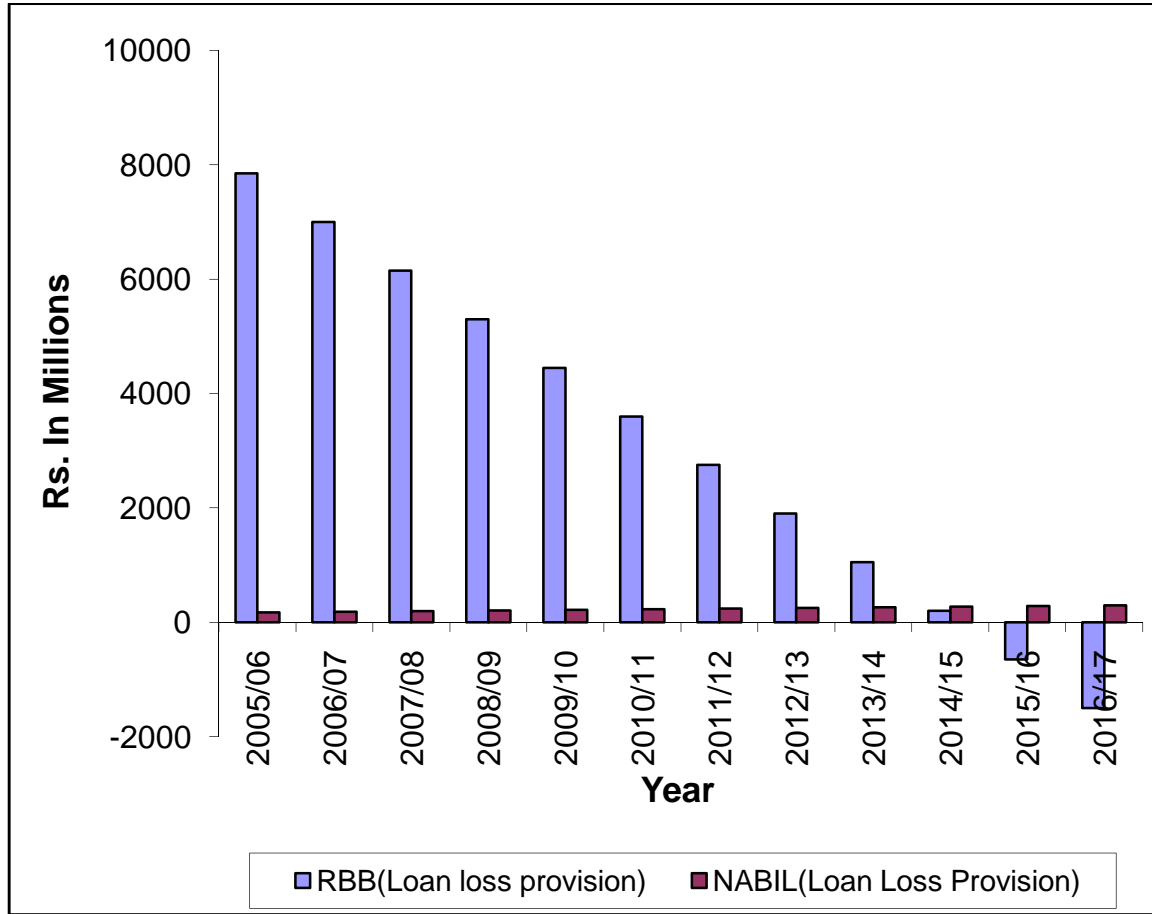


Table 4.4.5 reveals the trend of loss loan provision of RBB and NABIL. Loss loan provision of NABIL is forecasted constant and forecasted in decreasing trend. The trend of increasing value of loss loan provision of NABIL is higher and aggressive than RBB. The loss loan provision of NABIL increasing every year and RBB has been decreasing every year respectively. The trend of loss loan provision projected to FY 2016/17 i.e. further Eight year. In conclusion, NABIL is doing better because constant in loss loan provision but RBB has decreasing loss loan provision, which indicate it is doing best. It is suggest NABIL decrease the NPL to minimize loan loss provision.

In conclusion, as from trend analysis, the trend line of total deposit of RBB and NABIL is in

increasing trend. The rate of increment of total deposit for NABIL seems to be higher than that of RBB. The increasing trend of total deposit of NABIL is more aggressive and high rather than RBB. It indicates NABIL has more prospect of collecting total deposit.

\The loans and advances of RBB and NABIL Both Banks have in reverse trend. The increasing trend of NABIL is higher than RBB. The actual value of loans and advances for RBB is quite fluctuating in relation to NABIL. It is clear that both NABIL and RBB are mobilizing its collected deposits and other funds in the form of loans and advances. But the NABIL has highly mobilizing loans and advances than the RBB.

The trend of net profit both banks RBB and NABIL forecasted in reverse trend. The trend of increasing value of net profit of RBB is higher and aggressive than NABIL i.e. RBB is doing better in order to generate net profit during the projected study period. The prospect of profit generating capacity of RBB is high than the NABIL.

The trend of non-performing assets of RBB and NABIL are opposite direction. Non-performing assets of RBB is forecasted in decreasing trend. Which indicate non-performing assets is regularly decreasing during the study period. The trend of non-performing assets of NABIL is estimated in increasing trend. RBB is doing better by decreasing non-performing assets. However, NABIL is increasing non-performing assets.

The trend of Loss loan provision of NABIL is forecasted constant and RBB forecasted in decreasing trend. The trend of increasing value of loss loan provision of NABIL is higher than RBB. RBB is doing better because constant in loss loan provision but NABIL has increasing loss loan provision.

4.5 Major Findings of the Study

The study is fully based on the secondary data of related banks and NRB report. From the data analysis of concerned banks, the major things, which have been found, are as follows:

The loans and advances to total assets ratio of RBB and NABIL are in fluctuating trend during the study period. The mean of RBB and NABIL are 36.78% and 58.34% respectively. While observing their ratios NABIL is better mobilizing of fund as loans and advances in total assets

and it seems quite successful in generating higher ratio in each year in comparison of RBB.

The loans and advances to total deposit ratio of RBB and NABIL is fluctuating trends. The mean of RBB and NABIL are 52.36% and 72% respectively. So NABIL has higher ratio than that of RBB. It indicates the better mobilization of deposit or converted in to loans and advances to earn income by NABIL. The S.D. and C.V of RBB is 6.4340, 0.1229 similarly NABIL has 5.4865, 0.0762. Thus, it signifies that RBB has higher deviation. The higher C.V. of RBB shows the more inconsistency in the ratios with compare to NABIL.

The average mean ratio of non-performing assets to total loans and advances of RBB is 21.7333. The S.D is 7.0996 and C.V. is 0.3267. Similarly, NABIL has high mean ratio of non-performing assets to total loans and advances is 0.9524, which is much lower than RBB. The S.D of NABIL is 0.2934 and C.V is 0.3081 respectively. It can be said that NABIL performing well or maintaining their NPAs perfectly. But the RBB has the high degree of NPL. The higher ratio implies the bad quality of loan or assets of banks in the form of loans and advances. It is higher than the acceptable standard of 10%. The S.D of RBB is high it signify the high variation in ratio.

The ratio of provision held to total non-performing assets for the NABIL has the highest ratio than the RBB. The average mean ratio of RBB is 135.3279. The standard deviation is 22.2859 and C.V. is 0.1647. It indicates NABIL Banks has appropriate provision for non-performing asset. The mean ratio of NABIL is 209.8139 respectively. The S.D of NABIL is 18.7071 and coefficient of variation is 0.0892 respectively. NABIL has high ratio of NPL as so banks has make high provision as well.

In terms of non-performing assets to total assets ratio between NABIL and RBB. RBB has the approximately highest ratio than the NABIL. The average ratio of non-performing asset to total asset is 0.5462. The ratios of NABIL continuously decreasing it indicate that banks have proper utilized and invest the assets. The S.D of NABIL 0.1343 and C.V. is 0.2459 respectively. NABIL has the lowest ratio with decreasing. The average mean ratio of RBB is 7.7971. The S.D of RBB 1.8042 and C.V. is 0.2314 respectively. RBB has the highest ratio, which shows the bad performances and lower profitability on its assets.

The ratio of returns on loans and advances show how much banks making earning through providing loans and advances. The NABIL has the highest ratio through the study period. The average mean ratio of NABIL is 4.0146. The S.D of NABIL is 2.0477 and C. V. is 0.5101 respectively. Lowe S.D. and higher C.V. indicate not variability in ratio of NABIL. The mean ratio of RBB is 5.7094, The S.D is 1.7404 and C.V is 0.3048 respectively. Thus, it signifies that along with the lower return and high degree of variation in this ratio.

The coefficient of correlation between deposits and loans and advances of RBB and NABIL is 0.577104 and 0.99046. It is shows that both have the positive relationship between these two variables. The coefficient of determination of NABIL is 0.981016. Similarly, value of coefficient of determination of RBB is 0.33305. The correlation coefficient of NABIL banks is significant because the correlation coefficient is greater than the relative value of 6 P.Er whereas correlation coefficient of RBB banks is insignificant because the correlation coefficient is lower than the relative value of 6 P.Er.

The correlation coefficient between, loans and advances and net profit is -0.63405 of RBB. It refers that there is negative correlation between these two variables. Here, 40.20% of net profit is contributed by Loans and advances. The relationship is insignificant because the coefficient of correlation is less than 6 P.Er. NABIL have also negative correlation i.e. -0.39622. There is only 15.69% percent variability in net profit is explained by loans and advances. The relationship between Loans and advances and net profit is insignificant due to less correlation coefficient than 6P.Er. In conclusion, NABIL and RBB both have insignificant relationship between loans and advances and net profit than that of RBB.

The correlation coefficient between, total provision and loans and advances is -0.64457 and 0.857819 of RBB and NABIL. It refers that there is positive and negative correlation between these two variables of NABIL and RBB. Here, 41.54% of provision of RBB is contributed by as loans and advances and 73.58% variability in Provision of NABIL is explained by loans and advances. NABIL banks have more correlation coefficient than 6P.Er. Shows that the relationship between Total Provision and Loans and advances is significant but reverse in case of RBB.

The relationship between LLP and NPA of RBB and NABIL are positive direction. The

correlation between LLP and NPA of RBB is 0.963609. It refers that there is positive correlation between these two variables. The coefficient of determination of RBB is 0.928543. The relationship between LLP and NPA is significant. NABIL has positive correlation i.e. 0.739054. The coefficient of determination is 0.5462. The coefficient of correlation is less than 6P.Er. So the relationship between Loan loss Provision and Loans and advances is insignificant.

The correlation coefficient between, non-performing assets and loans and advances of RBB is - 71627. It refers that there is negative correlation between these two variables. Here, 51.30% of non-performing assets is contributed by as loans and advances. NABIL has positive correlation i.e. 0.836751 between non-performing assets and loans and advances. Here 70.01% variability in non-performing asset is explained by loans and advances. The relationships of RBB bank is insignificant because the coefficient of correlation is little less than 6 P.Er. And adverse of NABIL.

The relationship between the non-performing asset and total assets of RBB and NABIL is not similar. The correlation between NPA and total Asset of RBB is 0.060733. It refers that there is Positive correlation between these two variables where, 0.3688%% of non-performing assets is contributed by total Asset. The relationship between NPA and Total Asset of RBB is insignificant. Likewise, NABIL has positive correlation i.e. 0.772776 between the non-performing asset and total assets. There is 59.71% percent of non-performing asset is explained by Total asset. The coefficient of correlation is grater than 6P.Er. So the relationship between non-performing asset and total assets of NABIL is significant.

The trend line of total deposit of RBB and NABIL is in increasing trend. The rate of increment of total deposit for NABIL seems to be higher than that of RBB. The increasing trend of total deposit of NABIL is more aggressive and high rather than RBB. It indicates NABIL has more prospect of collecting total deposit.

The loans and advances of RBB and NABIL Both Banks have in reverse trend. The increasing trend of NABIL is higher than RBB. The actual value of loans and advances for RBB is quite fluctuating in relation to NABIL. It is clear that both NABIL and RBB is mobilizing its collected deposits and other funds in the form of loans and advances. But the NABIL has highly mobilizing loans and advances than the RBB.

The trend of Net profit both banks RBB and NABIL forecasted in reverse trend. The trend of increasing value of net profit of RBB is higher and aggressive than NABIL. The net profit of RBB increasing every year by Rs.147.8 million and NABIL has been decreasing by Rs. 51.75 million respectively. In conclusion, RBB is doing better in order to generate net profit during the projected study period in conclusion the prospect of profit generating capacity of RBB is high than the NABIL.

The trend of non-performing assets of RBB and NABIL are opposite direction. Non-performing assets of RBB is forecasted in decreasing trend. Which indicate non-performing assets is regularly decreasing during the study period. The trend of non-performing assets of NABIL is estimated in increasing trend. The non-performing assets of NABIL has been increasing every year by Rs.11.458 million and RBB is decreasing Rs1890.87 million respectively. RBB is doing better by decreasing non-performing assets. However, NABIL is increasing non-performing assets.

The trend of Loss loan provision of NABIL is forecasted constant and RBB forecasted in decreasing trend. The trend of increasing value of loss loan provision of NABIL is higher than RBB. The loss loan provision of RBB decreasing every year only by Rs.2149.83 and NABIL has been increasing every year by Rs.19.25 million respectively. RBB is doing better because constant in loss loan provision but NABIL has increasing loss loan provision.

CHAPTER -V

SUMMARY, CONCLUSION AND RECOMMENDATION

5.1 Summary

The assets of commercial banks indicate the manner in which the fund entrusted to the banks is employed. The successful working of the banks depends on the ability of the management to invest funds among the various investment projects. Hence, loans and advances are the most profitable assets of banks. These assets constitute primary sources of income to banks and being a business institution, a banks aims at making huge profit. Since loans and advances are more profitable than any other asset of the banks, it is willing to lend as well as fund as possible. However, banks have to be careful about the safety of such loans and advances. It means the banks have to be careful about the repayment of loans and interest before giving loans. If banks are too timid it may fail to obtain the adequate return on the fund, which is confided to use. Similarly, if the banks are too liberal, it may easily impair his profit by bad debts. Therefore, banks should not forgot the reality that most of the banks failures in the world due to shrinkage in the value of the loans and advances

Despite of being loans and advances more profitable those other assets, it creates risk of non-repayment for the banks, such risk is known as credit risk or default risk. Therefore, like other assets the loans and advances are classified into performing and non-performing on the basis of overdue aging schedule. If the due in the form of principal and interests are not paid by the borrower for a certain period is called non-performing loan or assets. It means NPAs could wreck banks profit ability both through loss of interest income and write off the principal loan amount. Non-performing loan are also known as non-performing assets (NPAs) performing assets have multiple benefits to the company as well as to the society while non-performing assets erode even existing capital of the banks. NPAs have been becoming great problem in banking business in the world. In this context Nepal can't be run off from such situation. The level of NPA in Nepalese banking business is very alarming. It is well known fact that the banks and financial institution in Nepal have been facing the problem of swelling non-performing assets (NPAs) and the issue is becoming more and more unmanageable day by day. We are well known from different financial reports; banking and financial statistics no-52 January 2009, the

total NPA in Nepalese banking system is about 18548.20 million.

This research was focused on studying the non-performing assets of public and private commercial banks. For this purpose, descriptive and analytical research designs were adopted out of total population of 26 commercial banks; one public and one private bank were taken as sample using judgmental sampling method. They were Rastrya Banjiya Bank and NABIL Banks Limited. In this study mostly secondary data were used. Besides this, newspaper, relevant thesis, journals, articles, related website etc. were also taken for this research. The data collected from various sources were recorded systematically and presented in appropriate forms of table and charts and appropriate mathematical, statistical, financial and graphical tools were applied to analyze the collected data in suitable manner. The data of five consecutive years of the banks were analyzed to meet the objective of the study.

5.2 Conclusions

The money is the blood of the any organization. Thus its proper utilization may be caused of success of the business or organization. Today's banking industry is severely affected by the problem of non-performing assets (NPA). It can be concluded that improper credit appraisal system, ineffective credit monitoring and supervision system, economic slowdown, borrower's misconduct, and over valuation of collateral, political pressures to lend for accredit worthy parties etc. are the major factors leading to non-performing assets.

Even the financial sector is growing terms of quantity but it is for develop countries in term of quality. The main objective of commercial banks is to collect the idle funds from public and mobilize it into productive sector, which caused the overall economic development. The banks should have to take in consideration that the interest of depositors, shareholders, and society. Lending is the one of the main function of commercial banks which is the most income generating by assets. As saying "high risk, high return" it gives high return than it also high risk. To minimize this risk banks should have to make loan loss provision for safety. If high amount of loans and advances lend then high amount of loan loss provision is required as per NRB directive.

Nepalese banks have to remarks focused in their efforts to recover their spiraling bad loans, or

non-performing assets, to sustain the positive trend of improving assets quality. Better risk management techniques, compliance with core principles for effective banking supervision skill building and training and transparency in transaction could be the solution. Removal of non-performing loan from the banking system even through government or quasi government funds at times, is essential. But official assistance should be so structured as to avoid moral hazard to conclude with, till recent past, corporate borrowers even after defaulting continuously never had any real fear of banks taking any action to recover their dues despite the fact that their entire assets were hypothecated to the banks. This is because there was no legal Act formed to safeguard the real interest of banks. While NPA can't be eliminated, but can only be contained, it has to be done not at a heavy cost of provisioning and increasing the portfolio of credit. Along with recovery fresh inflow of NPA should be brought down at a level much less than the quantum of its exit. If this specific goal is reached, there is an eventual solution for this problem. Good governance is essential for the success in NPA management.

It is found that the RBB has the highest NPA to total loans and advances. RBB is generating most of their assets in loans and advances but they are in loss. NABIL invest least amount of their resources in loans and advances. That is why NABILs profits show the high during the study period. Similarly RBB has maintained huge amount of provision due to high non-performing assets, which also cause to reduce the profit of RBB. In this way, RBB seems to be weak compare to NABIL.

In conclusion, improper credit policy political pressure to lend, lack of supervision and monitoring, economic slowdown, overvaluations of collateral are the major causes of occurring NPAs. In recent year, not only the private sectors banks but also public sector's banks are trying to maintain their loans and advances to control over becoming the NPA.

5.3 Recommendations

High levels of non-performing assets not only decrease the profitability of the banks but also affect the entire financial as well as operational health of the organization. If the NPA does not control immediately, it will be main causes for shutdown of the banks in future. Therefore following are some of the recommendation, which will help to reduce the level of NPA of Nepalese Commercial Banks.

- 1 It is recommended to RBB to make serious action to recovering the bad loans (NPA). And also should make remedial action for new loan. Hiring assets management company (AMC) is recommended to reduce the current non-performing assets.
- 2 RBB has the low amount of loan comparing to NABIL. It provides lower amount in the form of loans. Thus, it can be said that the management of RBB is risk averse as compare to NABIL. RBB banks will be able to better mobilization of collected deposit. Even though investing their resources in the most income generating sources but they have negative returns due to enough bad loans.
- 3 NABIL need to increase their lending in terms of loans and advances according to returns, safety, liquidity and risk.
- 4 The loans loss provision of RBB has high due to high amount of NPA. It is recommended that the banks should have to increase the provision amount to recover the bad loans.
- 5 Government must applied regulator body to take timely action against willful defaulter.
- 6 One of the main causes of default loans and increasing the NPAs is that the banks aren't taking much collateral or over valuation of collateral. Therefore, banks should take enough collateral, so the banks at least can able to recover its principle and invest amount in case of being unable to repay by the borrower.
- 7 Lack of proper financial analysis of the borrower by the banks, is one of the major cause behind increasing NPA of Nepalese commercial banks. Thus proper financial analysis should be done before lending to the borrowers.
- 8 The accounting policies must be transparent and must be best auditing practices.
- 9 Inefficient management may be the cause to increase the non-performing assets in Nepalese commercial banks. Therefore, all banks should provide appropriate training regarding loan management, risk management, credit appraisal etc to the employee.
- 10 The other factors which lead to non-performing assets are lack of proper supervision and monitoring, ineffectiveness of credit policy, political scenarios, and economic conditions. Besides that negligence in taking information from credit. Information Bureau may be also leading factor to NPAs. It is recommended that banks should apply precaution before granting loans and advances to decrease the bad loans.

- 11 Lack of credit rating agency. So it's recommended to establish the credit rating agency and AMC to proper analysis.
- 12 Last but not the list the banks staff must know their responsibility of the work rather than their selfishness. They must have strong commitment and support the rule and regulations.

BIBLIOGRAPHY

BOOKS

- Gupta, S. C. (1992), *Fundamentals of statistics*, Bombay: Himalayan Publishing House.
- Pandey, I. M. (1999), *Financial Management*, New Delhi: Vikas Publishing House Pvt. Ltd.
- Pant, Prem Raj (2009), *Social Science Research and Thesis Writing*, Kathmandu: Buddha Academic Publishers and Distributors Pvt. Ltd.
- Paudel, Rajan B. Baral, Keshar J. Gautam Rishi R. Dahal Gyan B. Rana Surya B. (2005), *Fundamental of financial Management*, Kathmandu: Asmita Book Publisher and Distributors.
- Porter, Gary A. Norton Curtis L. (2008), *Financial Accounting: The Impact on Decision Maker*, India: Harcourt College Publisher.
- Reilly, Frank K. and Brown, Keith C. (2007), *Investment Analysis and Portfolio Management*, India Haryana Sanat Printers.
- Rose, Peters (2002), *Commercial Bank Management*, New York: McGraw-Hill/ Irwin Publication.
- Shekher, K. C. and Shekher Lekshmy (1998), *Banking Theory and Practice*. New Delhi: Vikas Publishing House Pvt. Ltd.
- Shingh, Hriday Bir (2062), *Banking and Insurance*, Kathmandu: Nepal, Asia Publication (P) Ltd.
- Shrestha, Sunity & Silwal, Dhurba P. (2004), *Statistical Method in Management*, Kathmandu: Talaju Prakashan.
- Thygeron, Kenneth J. (1993), *Financial Markets and Institutions*, New York: Harper Collins College Publishing Pvt. Ltd.
- Timilsina, Yogendra (1997), *Banking Business in Nepal*, Kathmandu: Ratna Pustak Bhandar.
- Vaidya, Shakespeare (1998), *Project Failures and Sickness in Nepal, Challenges to Investor for Investment Risk Management*, Kathmandu: Monitor Nepal.

Wild, John J. Subramanyam, K. R. & Haskey, Robert F. (2003), *Financial Statement Analysis*, USA: McGraw Hill International.

Wolff, Howard & Pant Prem R. (2002), *A Hand Book for Social Science Research and Thesis Writing*, Kathmandu: Buddha Academic Publishers and Distributors Pvt. Ltd.

Zikmund, W. G. (2009), *Business Research Method*, New Delhi: Cengage Learning India Pvt. Ltd.

THESIS

Bhattarai, Sharma (2004), *Implementation of Directives Issued by Nepal Rastra Bank: A Comparative Study of Nepal SBI bank Limited and Nepal Bangladesh Bank Limited*, Kathmandu: An Unpublished Master Degree Thesis Submitted to Faculty of Management, T. U.

Khadka, Anju (2002), *A Comparative Study on Investment Policy of Commercial Banks*, Kathmandu: An Unpublished Master Degree Thesis Submitted to Faculty of Management, T. U.

Khadka, Dinesh Kumar (2004), *Non-Performing Assets of Nepalese Commercial Banks*, Kathmandu: An Unpublished Master Degree Thesis Submitted to Faculty of Management, T. U.

Pandev, Santosh (2002), *NRB Directives, Their Implementation and Impact on Commercial Banks: A Case Study of Himalayan Bank Limited*, Kathmandu: An Unpublished Master Degree Thesis Submitted to Faculty of Management, T. U.

Shrestha, Niva (2004), *A Study on Non-Performing Loan and Loan Loss Provisioning of Commercial Banks*, Kathmandu: An Unpublished Master Degree Thesis Submitted to Faculty of Management, T. U.

Shrestha, S. (2007), *Comparative Analysis of Non-Performing Assets of Nepalese Commercial Banks*, Kathmandu: An Unpublished Master Degree Thesis Submitted to Faculty of Management, T. U.

Shrestha, S. (2008). *A Study on the Credit Risks Management of Nepalese Commercial Banks with Reference to Kumari Bank Limited and Macchapuchre Bank*, Kathmandu: An

Unpublished Master Degree Thesis Submitted to Faculty of Management, T. U.

ARTICLES

- Adhikari, Maha Prasad (2062). “Non-Performing Loan and Its Management”, *Nepal Rastra Bank Samachar*, Vol. 5, pp. 39-43.
- Chhetri, Deependra B. (2057). “Non-Performing Assets: A Need for Rationalization”, *Nepal Rastra Bank Samachar*, Vol. 3, pp. 17-21.
- Dungana, Bhishma Raj (2058). “AMC in Nepal: A Step towards the Development of Financial Infrastructure”, *Banking Parbardhan*, Vol. 13, pp. 125-127.
- Neupane, Bishwambhar (2058). “NPAs at Nepalese Financial Institutions”, *The Kathmandu Post*, P. I.
- Pyakuryal, Bishwambher (2001). “Our Economy is in a Volatile Stages”, *nepalnews.com*, P. 3.
- Regmi, Yogendra (2063). “Non-Performing Assets Management”, *Nepal Rastra Bank Samachar*, Vol. 6, pp. 17-75.
- Sapkota, Narayan (2004). “Portion of NPA in Commercial Bank-High in Public, Low in Private”, *Rajdhani*, P. 5.

JOURNALS

- Central Bureau of Statistics (2010), *Nepal in Figures*, Kathmandu: Nepal.
- Nepal Rastra Bank (2010), *Banking and Financial Statistics*, Kathmandu: Nepal.
- Nepal Rastra Bank (2010), *Microeconomic Indicators of Nepal*, Kathmandu: Nepal.

APPENDIX
NABIL BANK LTD.

Year	Total Deposit	Total Loans & Advances	Total Assets	Loan Loss Provision	Net Profit
2005/06	19348.4	13239.4	24134.6	352.9	979.1
2006/07	23342.4	15878.3	29660.4	356.3	685.6
2007/08	31915.0	21769.7	38478.6	404.6	750.4
2008/09	33848.5	25440.4	42464.1	462.4	673.5
2009/10	42522.9	34109.7	51031.7	441.6	772.8

RBB BANK LTD

Year	Total Deposit	Total Loans & Advances	Total Assets	Loan Loss Provision	Net Profit
2005/06	45700.7	27164.7	81087.1	13593.1	1949.7
2006/07	50192.6	25422.3	72041.3	8967.5	1777.1
2007/08	57990.8	27491.2	84686.2	7709.4	1846.9
2008/09	61944.3	28209.9	86517.7	7407.3	1178.8
2009/10	61209.7	35991.7	71920.0	4936.9	1253.4