

**PARENTS' ATTRACTION TOWARDS ENGLISH MEDIUM CLASSES IN  
COMMUNITY SCHOOLS**

**A Thesis Submitted to the Department of English Education  
In Partial Fulfillment for the Master of Education in English**

**Submitted by  
Dipa Rai**

**Faculty of Education  
Tribhuvan University, Kirtipur  
Kathmandu, Nepal  
2023**

**PARENTS' ATTRACTION TOWARDS ENGLISH MEDIUM CLASSES IN  
COMMUNITY SCHOOLS**

**A Thesis Submitted to the Department of English Education  
In Partial Fulfillment for the Master of Education in English**

**Submitted by  
Dipa Rai**

**Faculty of Education  
Tribhuvan University, Kirtipur  
Kathmandu, Nepal  
2023**

**T U Reg. No.: 9-2-9-463-2009  
Forth Semester Examination  
Exam Roll No: 7428037**

**Date of Approval of the thesis  
Proposal Approval: 12/01/2022  
Thesis submission: 11/09/2023**

### **Declaration**

I hereby, declare that this study entitled " Parents Attraction Towards English Medium Classes in Community Schools" is based on my original research work. It contains no material from the previously written by other person except the quotations and theories themselves.

**Date:** .....

.....

**Dipa Rai**

### **Recommendation for Acceptance**

This is to certify that **Ms. Dipa Rai** has prepared her M.Ed. thesis entitled **Parents' Attraction Towards English Medium Classes in Community Schools** under my guidance and supervision.

I recommend this thesis for acceptance.

**Date:** .....

.....

**Dr. Gopal Prasad Pandey (Supervisor)**

Department of English Education

Reader and Head

Faculty of Education

Tribhuvan University, Kirtipur,

Kathmandu, Nepal

## Recommendation for Evaluation

This proposal has been recommended for evaluation from the following  
**Research Guidance Committee:**

### Signature

**Dr. Gopal Prasad Pandey**

Reader and Head

Department of English Education

T.U., Kirtipur, Kathmndu

.....

Chairperson

**Dr. Gopal Prasad Pandey (Supervisor)**

Reader and Head

Department of English Education

T.U., Kirtipur, Kathmandu

.....

Member

**Dr. Renu Singh**

Lecturer

Department of English Education

T.U., Kirtipur, Kathmandu

.....

Member

Date: 12/01/2022

## Evaluation and Approval

This thesis has been evaluated and approved by the following **Research Evaluation and Approval Committee**.

### Signature

**Dr. Gopal Prasad Pandey**

Reader and Head

Department of English Education

T.U., Kirtipur, Kathmandu

.....

Chairperson

**Dr. Rishi Ram Rijal**

Professor

Mahendra Ratna Campus

Tahachal, Kathmandu.

.....

External

**Dr. Kamal Raj Devkota**

Lecturer

Department of English Education Member

T.U., Kirtipur, Kathmandu

.....

Member

Date: 15/09/2023

## **Dedication**

This thesis is dedicated to my husband and ever encouraging parents, and to all those people who have supported me throughout my education. Thanks for making me see this adventure through to the end.

## Acknowledgements

I am heavily indebted to those personalities whose invaluable thoughts have enriched my thesis study. I wish to extend my special appreciation and humble gratitude to my supervisor, **Dr. Gopal Prasad Pandey**, Reader and Head, Department of English Education for his proper guidance, invaluable feedback and counsels.

I am equally thankful to **Dr. Renu Singh**, Lecturer, Department of English Education, for her insightful views, reviews and encouragements during the viva of my proposal for this thesis. Similarly, I would like to express my sincere gratitude to the external supervisor, **Dr. Rishi Ram Rijal**, Professor, Mahendra Ratna Campus, Tahachal, Kathmandu, for his suggestions, feedback and encouragements during the viva of this thesis. Similarly, I would also like to thank to **Dr. Kamal Raj Devkota**, lecturer, Department of English Education, for providing me guidelines and support.

I also acknowledge the support and cooperation of the respondents who contributed a lot by providing the data I needed. They were truly generous and deserve sincere thanks for providing me with their precious time sharing their views. I am also grateful to **Mr. Guru Prasad Poudel**, Assistant, Department of English Education, **Mr. Khem Raj Joshi**, Teaching Assistant, Department of English Education, **Hari Maya Sharma**, Lecturer, Department of English Education and **Mrs. Madhavi Khanal**, Administrative Staff at Department of English Education, T.U., Kirtipur, for their generosity and ever encouraging support.

I also wish to extend my warm love and support to my colleagues for their supportive ideas. I appreciate the tireless work of the principals in my sample schools as well who granted me the possible help throughout my study. I also remember all the authors whose ideas have been cited in this report. I would also like to extend my hearty appreciation and thanks to my family and the well-wishers for their wholehearted support and cooperation.

**Dipa Rai**



## Abstract

The present study is entitled "Parent Attraction towards English Medium Classes in Community Schools"; aimed to explore the parents' attractions towards teaching their children in English medium classes. Based on this research objective, the investigation was mainly focused to find out to what extent the parents were attracted and motivated to educate their children in English -as- a- medium – of – instruction (EMI) in the schools. In this regard, study was survey research design was followed for which parents of the 50 school children studying at different EMI schools in Dhankuta were sampled. A questionnaire was developed focusing on the main objectives and administered to derive the quantitative information for this research. Although this study was based on the survey research design, qualitative narratives were also used in the course of data analysis and interpretation. The study found that the lower secondary students' parents were attracted toward English medium. English language is important because it offers different personality of children and provide quality education. Likewise, adopting English creates some challenges such as; parents have difficult to save Nepalese culture and maintain costly materials for their children. Within this parent motivate their children to acquire English by joining in English medium classes. So that, the study showed majority of the parents were positive towards English medium of classes.

This research consists of five different chapters. Chapter one is the introductory part of this study. It includes the background of the study, statement of the problem, objectives of the study, research questions, delimitations of the study and operational definitions of the key terms. The Second chapter deals with review of theoretical literature, empirical literature and conceptual framework. The third chapter is the part of methodology and procedures of the study. This part included research design and method of the study, populations, sample and sampling strategy, research tools, sources of data collection, data collection procedures, data analysis and interpretation procedures and ethical considerations. Likewise, the fourth chapter included analysis and interpretation of results. And the last chapter five includes conclusions, and implications of the study. In the same way, in the final part of the thesis includes references and appendices.

## Table of Contents

<i>Declaration</i>	<i>i</i>
<i>Recommendation for Acceptance</i>	<i>ii</i>
<i>Recommendation for Evaluation</i>	<i>iii</i>
<i>Evaluation and Approval</i>	<i>iv</i>
<i>Dedication</i>	<i>v</i>
<i>Acknowledgements</i>	<i>vi</i>
<i>Abstract</i>	<i>vii</i>
<i>Table of Contents</i>	<i>viii</i>
<i>List of Tables</i>	<i>x</i>
<b>Chapter 1: Introduction</b>	<b>1-5</b>
Background of the Study	1
Statement of the Problems	3
Objectives of the Study	4
Research Questions	4
Signification of the Study	4
Delimitation of the Study	4
Operational Definition of the Key Terms	5
<b>Chapter 2: Review of Related literature and Conceptual Framework</b>	<b>6-18</b>
Review of the Theoretical Literature	6
English Medium Classes	6
Importance of English language	9
Parents motivation on Children Education	10
Benefits of English as the Medium of Instruction in Nepal	11
Challenges in adopting English as medium of instruction	12
Review of Empirical Literatures	13
Implications of the Review for the study	16
Conceptual Framework of the Study	18
<b>Chapter 3: Methodology and Procedures of the Study</b>	<b>19-21</b>
Design and Method of the Study	19
Population, Sample and Sampling Strategy	19
Research Tools	20
Data Collection Procedures	20
Data Analysis and Interpretation Procedures	20

Ethical Considerations	21
<b>Chapter IV: Analysis and Interpretation of Result</b>	<b>22-33</b>
Analysis of Data Collection through Questionnaire	22
Important of English language	22
Challenges of parents to send their children	24
Parents efforts on Children Education	27
EMI Provide Quality Education	28
English language develops children career	29
English Medium of Instruction can deliver the proper knowledge	30
Summary of Findings	31
<b>Chapter 5: Conclusion and Implementation of the study</b>	<b>33-35</b>
Conclusions	33
Implication of the Study	34
Policy related	34
Practice related	34
Further Research related	34
<b>References</b>	
<b>Appendices</b>	

**List of Table**

Table 1: Important of English language	23
Table 2: Parents Challenges	25
Table 3: Parents Effort on Children Education	27
Table 4: EMI Provide Quality Education	29
Table 5: English language Developed Children Career	29
Table 6: EMI Deliver the Proper Knowledge	60

## **Chapter 1**

### **Introduction**

This chapter basically includes general background of the study, statement of the problem, objectives, research questions, signification of the study, delimitations of the study and operational definitions of the key terms for the research.

#### **Background of the Study**

English is a foreign language. English medium of instruction concerns with the teaching tool for deliver knowledge. English language is spread in world as an international language, and it covers the technological language. According to Kachru (1985), English spread in three circle inner circle, outer circle, and expanding circle. In Nepali status English is spread as an expanding circle. English has become the main source for expansion of once knowledge so that, parents are attracted towards English medium classes. English language demand is growing day by day and parents are attracting to send their children in English classes, and they are ready to pay any cost so there may occur various problems. Shrestha (2021) argues many private English medium schools, once are still fascinating enough for mushrooming educational business, parents are courageous to send their children to EMI school, so that children can have fluent English with quality education. The scope of English language is increasing in school's field. Parents think if their children get opportunity to acquire English language then their future will be bright in world. But English language classes has various issues and create problems. Generally, medium concerns with tools to deliver any things. Community schools adopts English medium as an instructional tool. Nepal is the home of 131 indigenous languages and the Constitution of Nepal, 2072 provides right to choose mother tongue for instruction, instead of this parent are attracted towards English medium. Education Act 1971, provides the free educational rights but lots of school takes fees for English medium classes. Khatri (2016) defines the English differently, English may mean get good job, the ability to take a full part in the life of one's country or the opportunities to emigrate to another, and expansion of once political opinions or religious believe of others so that, English has different purposes to use.

Simply, in the context of Nepal English language demand is aroused highly and parents are also showed interesting attitude towards English medium and ready to send their children in English medium classes. Parents perception mostly effected by the global demand and English arouse globally so, in Nepal, community schools choose English language as an important language. But now a day's community schools are also attracted by English language. School management teams are courageous to choose English medium. To support the community schools' parents, show positive perception and help their children in their study. English is one of the most spoken languages across the world and it has been estimates of about 250-350 million non- native speakers which means there are a huge number of people who converts and communicate in English even though, it is not their own language or native tongue (Garddol, 2004 p.34). It is popular all over the world, so huge numbers of people are attracted towards EMI and simply parents are also attracted towards English medium classes.

While the National Education System Plan was established in 1969 established National Education System Plan and from 1971 to 1976 it enforced the established of private English Medium school to develop four skills of English among growing wealthy class of citizen who can afford private education. So that, private, missionary, and international schools adopted English medium instruction policy from grade one and these schools were considered "better quality school" (Phyak, 2016). Simply nowadays community schools are also empress towards English medium instruction. But while we are comparing private and community school there get massive difference on the periphery of English language instruction because, teachers and students in public school had very low English language proficiency, the textbooks were not being used effectively, and the predominated teaching method was grammar-transmission and rote learning that effect quality of the education (Phyak 2016). Parents play a vital role in developing the learners' future. In Nepal from the ruler area, parents have not any interested towards their children education so that right of free education and quality education is in only based on constitution. While most of the students' coursework will be taught in English' second language, a research shows only the coursework may not be enough to maintain or increase students' language proficiency in English which is often one of the goals of using the language as a medium of instruction (Rogir,2012).

English language is spread as mushrooming educational business and fascinating enough for the different purpose. Simply English language demand is aroused highly in Nepal. English language is become popular in our nation so that parents are courageous to send their children into EMI classroom. While the parents sent children into English medium that create various issues within this parent are attracted towards the English medium. Students' parents think that English can provide the quality education and develop their children's career.

### **Statement of the Problems**

Parents are the main pillars for developing the children' future. Parents are always focused on their children's education. In Nepal there mostly has private and government school. If we look surface of these school variation private school concerns with English medium school and community school concerns with government school which deliver free education. In my research, English attraction is one of the contemporary issues, but parents are attracted towards English medium. Community schools are developed by the government effort and there has not proper materials and teaching infrastructure but these schools trying to adopt English medium as an instruction tool. English Education products some problems in society and family. English language attracts the concept of parents and their perception is highly gone towards English medium instruction. Parents send their children in community school, is called government school which delivers free education but if these schools' practice English medium, it destroys free educational rights. And next is that parents' desire may be unusable for children because learning a natural process. If the parents force their children to join in English classes, there may be arouse debate between parents and students because students may not have desire to join in English classes. If the learners are not courageous towards English Classroom, they will be passive in classroom and interaction between teacher and students will not be perfect, so in that condition there will not be fulfill curriculums objectives. So that, parents' attraction to EMI arouses various problems. While achieving the English language, there occur various problems. Instead of the parent's courageous towards the English medium instruction, school cannot be success to accept EMI classrooms. So that, EMI is developed as a contemporary issue for non-native learners.

### **Objectives of the Study**

The objectives of the study are as follow:

- a) To explore the parents' attraction towards teaching their children in English Medium classes.
- b) To suggest some pedagogical implications.

### **Research Questions**

- a) To what extent are the parents attracted towards teaching their children in English Medium classes?
- b) What will be the pedagogical implication of this research?

### **Signification of the Study**

Parents desire is increasing towards teaching their children in English Medium classes. In the absence of EMI for their children, parents often feel that there may occur some economic, social and psychological problems. Therefore, this study aimed to explore to what extent the parents are attracted towards their children's English medium classes. The Constitution of Nepal, 2072 provides right to the English and Nepali medium of instruction that way policy maker shows interest in English medium classroom. It certainly arouses the new interest of parents among languages. Because English language is international language and parents are ready to do any effort for send their children in English classes which is costly then Nepali medium instruction. Parental pressure is always gone towards learners' schooling and parents are motivated to send their children in English classroom because of the parents are dominated through English language and they think English medium is the best medium for adjusting their children in contemporary society. So, my study is based on parents' attraction towards EMI.

### **Delimitations of the Study**

This study had limited as following points:

- a) This study area limited to KanyaDevi school students' parents and their attraction towards the English medium instruction.



- b) The population of this study included school's parents who are attracted to send their children to EMI school.
- c) This study based on survey research design as a research methodology.
- d) This study was based a questionnaire as a tool for data collection.

### **Operational Definition of the Key Terms**

The key terms used in my research which are listed below with their definition.

**Attraction:** The concept of attraction concerns with the action or power of evoking interest in something. In my research attraction refers students' parents' interest to build of the children education through the English medium. Here, English medium instruction attracts the parents' concept and parents aware towards the English medium school.

**Parents:** Especially, parent concerns with the mother and fathers. But in the academic field parents are those who care for and protect any child's life, they are called parents. In my research study parents are courageous to develop children's education through the English medium so here parents are those who are attracted towards EMI and sent their children in to English medium classroom.

**Community school:** Community school is a government aided school that school delivers free education by taking governments rules and strategies. In my study there is a school named KanyaDevi school which is a community school.

**English Medium:** English medium refers a language to deliver information through English language in academic field as a tool for instruction. English medium demand is aroused highly in community schools and parents are attracted to send their children towards the English medium classroom.

## Chapter 2

### Review of Related Literature and Conceptual Framework

This chapter has provided some guidelines for my research study. By studying other related literature, I developed my research, and it guided me for scientific research and helped to reduce the problems which arose in research work. This chapter included some sub-topics related to theoretical, empirical literature, implication of the review for the study and conceptual framework. These literature reviews helped to produce new ideas for researchers.

#### **Review of related Theoretical literature**

Theoretical literature is a concept, beliefs and system about the topic. This section provided some guidelines about the topic and progressed the researchers' concept about the topic. While the researchers review related literature then he/she got chance to learn the gist of his/her study, so this section included some sub-topics such as: English medium classes, importance of English language, parents' motivation towards children education, benefits of English as the medium of English in Nepal, challenges in adopting English as medium of instruction.

**English Medium Classes.** Medium is concerned with the tool for delivering something. Similarly, in academic field English medium connects with a tool which deliver knowledge and information at classroom. If the medium of instruction is usable and understandable it develops the interaction between teacher and student and objectives of curriculum will be fulfilled. Most of the community schools adopt the Nepali medium classes but some community schools are attracted towards English language. Especially community school is related with government aid school which provides free education but for the English medium class it takes fees from students which destroy the right of free education. School Sector Reform Plan (SSRP) recommended supporting policy to mother tongue up to grade third, but community schools attract towards English medium classes. According to education act 1971, medium of instruction can be Nepali and English or both. The growing demand of people and parents seem to be English medium. English medium aroused as the dominant medium in Nepali context. By seeing the worldwide demand parents are courageous towards English medium classes. English medium classes deliver any

information through English language but in the Nepali multilingual classroom there will develop the misunderstanding class will be unusable for participation. To develop the English medium classes school managing team should be creative and develop proper language strategy. In school area, students get the proper areas to utilize English language but out of school's four walls' students mostly use their mother tongue, in that cases English language may not be practice. So, English medium class is not only one sector to learning English language as a foreign language.

According to Rogir (2012) in the context of education in the United Arab Emirates and other Gulf State, it is often used English language in institution in a homogeneous classroom of non-native English-speaking students whose first language is Arabic. Arabic language is the first tongue for the students in that causes Arabic language to be set on children's minds. Instead of this, the teacher delivers the content is in a native English, but not necessarily one trained in teaching second language learners. The assumption is that because students are taught subject matter using English their language proficiency will increase over the four undergraduate study years of even this assumption by examining the institution's expectations for language development during undergraduate study, students and faculty perceptions of language development over the four period, and the score gain results from a standardized English- language test given at entry and exit from the program. Language should be standard and have to provide the understanding meaning for all the country.

In a research Kirkpatrick (2017) found that a research in Philippines. Philippines has some 90 private universities listed on the relevant web page(eduphil.org,2011). All 90 private universities adopted EMI. Philippines has a most prestigious university of the Philippines at Dilman, as a state University. Some years ago, Philippines attempted to promote the national language, Filipino, as a language of education and research, the university experimented with offering courses through Filipino and encouraging staff to publish in Filipino. Deloping the national language university also encourages the students and staff. So, the unpopularity of both staff and students led the university to abandon the Filipino policy, however, and revert English medium. They are successes to develop the English language for the national language Filipino. All the national languages are equally necessary in their

nation so only the English language is not one of the languages for all over the world. Similarly, Nepal has own language, but Nepalese attraction is going towards English medium of instruction.

In research ‘English medium instruction in higher education (HE) in Pakistan: Policies, perceptions, problems, and possibilities’. Mahboob (2017) aroused a data of Students. In that data on English test scores (table 5.4) shows that in higher education these have different between private and public institutions’ score. The average of English language score in both types of institutions is quite low. These institutions’ results are not surprising for at least two reasons. One first reason is a large proportion of the students’ entering universities come from a non- EMI background and therefore have limited English language proficiency. Similarly, second reason, there are only limited resources available in institutions. Within this the universities provide appropriate English language and literacy support to students (Shamim 2011). Simply in research on some relevant data from MA Education students’ preferences for MOI in Irfan (2013) he listed a table and once again, we see overwhelming support for the English in HE (higher education) 92.5% of the participants either agreed or strongly agreed with the statement: “English language is essential for higher Education in Pakistan”). These numbers are comparable to that reported in the other two studies summarized earlier. In additional, this includes questions that explore the use of and perceptions towards English and Urdu in the particular context of participant. The results show that only about 66.5% of respondents agreed or strongly agreed with the use of English in an MA education program (the program they were enroll in). Furthermore, the results suggest that, regardless of the official policy, the actual programs are bilingual in Urdu and English: respondents stated that both Urdu and English are used as MOI and that they use both of these languages (and more often Urdu) when interacting with teachers. In facts more respondents stated that they used Urdu with their teachers than English.

English medium of instruction covers all schools, beside the Nepali subject. Parents show the demand of English medium instruction to send their children. At the school’s medium instruction English arouses as dominated medium because Nepal has 131 indigenous languages and English is non-native language for them. To

develop the English medium classes there require relevant strategies, infrastructure and policy within this we have to practice our national language too.

**Importance of English Language.** In the context of Nepal, English language concept was developed by Rana period in 1850. Janga Bahadur Rana was impressed by British Education system then make plan to open Darbar High School (Giri 2015). From these days English language started in Nepal. English is global language which spreaded as international language. According to Kachru (1985) English spreaded in three circle and Nepal is one of the countries which adopts English language in schools' field as a second language. Neupane (2017) stated that EMI is the influential and dominate MOI in Nepal. Universities have policy to teach in English, simply the demand of English language is increasing highly in educational field so that, English language has importance role in schools and it is grew up day-by-day. Dhakal (2016) found that 80 percent teachers are positive towards English medium, that directly concerns with academic and English language demand is increasing. Most of the technology and news, articles adopted English language, so parents are attracted towards English medium classes. Karunakaran (2011) stated parents view on English medium education, that has given a different personality to children. Similarly, Nepal is home of 131 languages and Constitution of Nepal, 2072 provided right to all local language as National language but these languages are speak in local area and English dominate and arouse as dominated language. So that English Language scope is developed in educational field. According to Sha& Li (2017) "as the brief history of EMI development in Nepal demonstrates, the Nepalese education system is being profoundly "Englishicized." English has therefore become both a powerful cultural capacity and resources for social, cultural, and economic mobility and it has assumed linguistic superiority over Nepal and local indigenous languages.

The UAE (United Arab Emirates) Ministry of Education has set specific language goals or schooling within the country. Evert students who wish to attend a federal university must take an exam to measure their English-language proficiency before acceptance to university. Those with scores below a minimal level will not be granted entry even to the pre-baccalaureate English-language programs' and this means they will not be able to attend one of the three federal higher education institutions. Of those accepted to one of the federal universities more than 90%

require remedial English before going on to their degree program (ahmed'2010) and up to one third of the federal universities' budget is spent on foundation level English courses because English is the primary languages (Rogir,2012).

English language covers the technology, news, and articles so its demand is increasing day by day. Parents and students have a view that only English medium education can progress their personality and develop their career, so they proudly adopt English medium instruction.

**Parents Motivation Toward Children Education.** Parents are the first teachers for every child. Mostly child development is affected by family and cultural phenomena. Parents are always aggressive towards their children's education, so they are motivated towards EMI classroom to send their children. Children have blank seat of paper in beginning stage, so that children development is related with parents then after school's environment also effect on children' physical, and psychological development. Parents provide motivation, support and quality instruments for children Education. Parents always have the desire to make their children successful people. So that, they are conjoined in various problems for teaching their child Education. Swap (1993) argues that many families are faced with overwhelming and unpredictable schedules and circumstances while juggling school, sports, family situations, family time, work schedules, and other responsibilities, allowing minimal time to provide support in any one given area; parents always stand in front of children education and shows the right path to their children. So parental involvement is aroused in local and foreign studies. Parents are the environment creator for their children's education and distribute their money, knowledge and time for their children's education. According to Epstein (1995) parenting, communicating, volunteering, learning at home, decision making and collaborating with the community affect the learners so parents always show the positive vibes towards children education.

Shrestha (2021) Parents and public schools administration hold different views on EMI at schools. Parents' perception is all about the successful career their children will have because of EMI. He observed that the students from private English medium schools are appreciably different from those from government schools, especially their being frank to speak, and moreover in English. The parents believe that students

are being able to speak English in the index of their quality education. They believe that the system is sure to equip students with their English efficiency, which adds personality and quality to their studies. As a result, children will have a successful career like doctors and engineers. There is no doubt, if the students being good at English that, opens the doors to many more opportunities they will be able to adopt and adjust themselves in the international level education system. Their experiences at the level add additional value to their confidence and personality but EMI itself is not the sole reason for the achievement students will make as expected by parents.

Children education is affected by their parents because parents are the environment creator and volunteer for their children. If the children get success that contribution directly goes to their parents. Parents show path to their children so that parents are always aggressive to develop their children education. Today's social requirement is based on English medium education, so parents are also courageous to send their children into English classroom. Students should get support and encouragement from their parents, so parents have to behave supportive behavior towards their children.

**Benefits of English as the Medium of Instruction in Nepal.** English is becoming international language and cover the technologic language. When Education act (1971) allowed school to adopt Nepali or English or both language as MOI. Then English language shift as MOI (medium of English). English language includes basically four skills so that for acquire the English language it adopts in academic field and instruct them, because English language has various benefits for human life. English language is mostly beneficial for future education and career. For developing the professional career every human resource requires to progress in their English language. Most of the upper classes and middle-class parents have desire to send their children in English medium instruction, because Diwakar (2013) argued that English medium of instruction is necessary to be skilled in English for higher study, science, medical field, technological field media etc. Most of the discipline in educational practice in Nepali today has included content from the international domain from English in their curricula. Diwakar (2013) also aroused result of largest university of the country TU (Tribhuvan University) has been adopting the policy of the English medium of instruction. It is already implemented in master's degree

university campus, TU Kirtipur. It compiled to learn English to be prepare for higher study.

The rise of English as a global language result in the rise of aspirations and ambitions of all the stakeholders. Nepalese academia observes the demand of English soaring up with the growing implementation of EMI attached to hopes for academic and economic gains to the national and international platform (Bista,2011&khati, 2016). Simply, Shrestha (2021) concluded that the production of renowned private EMI schools with good infrastructures and dedicated professionals have left deep impressions of EMI on students and parents in general. Hence studying at or sending students to EMI schools is a growing trend guided by the deeply- rooted discourse among parents that EMI is the basis of quality education and successful career. That shows English language demand dominates in Universities. Learners are always aggressive towards English medium instruction and think by getting fluency English language provides job opportunities in global market. To adjust in contemporary society, English is essential so, benefit of English language medium in community classes are increasing highly.

English language is used in multiple disciplines and technologies, simply its scope is highly implemented in educational field. English language scope is increasing in private and public field in that causes English language progress the people' career and provide guidelines for adjusting in every sector. To adjust in modern society English play's vital role because English develops as a contemporary requirement.

**Challenges in Adopting English as Medium of Instruction.** To adjust to any new things is such a difficult job. Simply while we adopt English instruction there occur various problems and challenges, it is clear that English is foreign language in our content so to implement EMI in community school is such a challenging work. Salem(2011) argues some problems and challenges regarding students that teachers faced in the classroom and its direct impact is on the teaching learning activities such a forgetting schools tools, frequent absence lack of attention hyper activities , inappropriate talk in the classroom, disobedience, aggressive, refused to do task and schools work are the most problems faced by teachers to implement EMI. Baral (2015) get various challenges of adopting LOI (language of Instruction), in private



and government school due to the difference in the LOI, management and resources. So that, management and resources affect the instructional quality. Baral (2015) also states that lack of language proficiency on the part of the teachers is identified as a factor that is complicating the problems. According to Pierce, Alvavez, Caudrado, Reobsco, Millian, villarroel, Sancho, Weis, Dochao, Nunez, Jose, Gonzales, Rosado and Hontoria (2015) present some challenges associated with the collaboration of teacher. These challenges are as on comprehensive input pronunciation, varied methodology multimodality, discipline literacy-approaching knowledge learning from the point of view of language, structure the lectures in English discourse strategies, administrative and language support rounding up the teaching assistants, develop materials in English simplicity and conciseness. Teachers have to maintain various challenges in classroom they don't have fluent pronunciation, discourse strategy, administrative support, and proper instructional materials.

Only adopting English language is not solution of adjusting in modern era. To fulfill the parents' attraction towards EMI parents and school management team should be consider about the schools' problems and challenges of EMI which are occurring while implementing EMI at community school of Nepal. Bhusal (2017) says schools of Nepal have not skillful teachers and proper materials for teaching in that condition in community school adopting an EMI is such a difficult and challenges.

Adopting English in instruction medium is such a challenging job. In the content of Nepal, English is a foreign language, but its scope is increasing day by day. To adopting English there require proper policy, infrastructure and human resources. Nepalese students' parents think English is a way to acquire quality education and it carry their children' career, so parents and students are forcefully attracted towards English medium classes, and they forget their own national language scope.

### **Review of Empirical Literature**

Review of empirical literature requires researchers to develop research ideas and it helped to reduce the research problems. By observing or studying other literature it provided me guidelines. This empirical literature helped me with the data collection process. Some of the research studies are as below:

Kumar (2003) in his research work entitled "Challenges of Using English as a Medium of Instruction in Multilingual Context". The main aim was to explore the challenge of using EMI in multilingual context. He used questionnaire, interview and observation as the data of collection and non-random sampling procedure was used for selecting sample population, and sample size consisted of 50 teachers and 10 classes. His major finding was that English as a Medium of instruction some time frustrates the students learning efforts instead of facilitating them. The maintenance of English may be an easier option with careful adoption of the bilingual best communication. But the teachers should have the skills necessary for supporting learning through and analytical understanding of language related barriers in addition, they should be fluent into critical skills of questioning and explaining the subject matter.

Baral (2016) conducted a thesis on the topic of "Experiences and Growth of English as a Language of Instruction in Nepal's School Education". Main aim of this study was to present a ground reality of Nepal's school education with regard to LOI (language of Instruction). He used a multi method approach for data collection process. Kathmandu, Pokhara, and Surkhet were chosen as the study areas for collecting the qualitative research and there are also a few studies focusing on quantitative data analysis. For collecting sampling, he used group interview by visiting field so in his research there used female and male informant as sample population. He found that the constitutional provision for a mother tongue-based education up to the primary level, EMSs have been expanding all over the country. At the same time many NMSs are also switching to ELOI in the name of ensuring better success and quality education.

Dhakal (2016) conducted thesis research on the topic of "English as a Medium of Instruction in the Government Aided School: Teachers' perception and use". He had put some objectives to find out the teachers' perception about English as a Medium of instruction in the government aided schools, to find out the current situation of using English language as medium of instruction in government aided schools, and next is to suggest some pedagogical implication. As a sample he selected four secondary and lower secondary schools and ten English language teachers from each school of Dhading district and use survey research techniques for descriptive

type of research. In this research he chooses questionnaire and classroom observation form, and dairy note to take response of the teachers for data collection. He found that 80% teachers are positive towards English medium. However, they have not trained to each other subject in English medium.

Neupane (2017) researched on the topic of "Parents Perception on English as the Medium of Instructional in Public School of Nepal". His research objectives were to find perception of parent from public school towards EMI and draw some pedagogical implication. In his research design, he adopted survey research for find out the information about the parent`s perception towards EMI in public schools of Nepal. All parents were the population for his study and thirty parents from public school of Parbat district were the sample population for his study. He used interview as a tool to collect the data. He interviewed in Nepali and later find convert into English. Interview data was analyzed in a descriptive manner. Through the parents interview he found that 100% of parents are in favor of EMI. Because in parent`s perception English medium instruction can improve the quality educational, so parents want to admit their children in English medium school. Most of the parents have voiced that children should be taught in English medium in primary level. They want their children having completed their primary level study at least in English medium school.

B.K (2017) conducted research on the topic of "Attitudes of Dalit Students towards Learning the English Language". He presented some research objectives to find out the attitude of the Dalit student towards the English language and to identity the challenges faced by Dalit Students in learning English and, find out the correlation between family background of Dalit student and learning English and last one is, to suggest some pedagogical implication he is adopted the survey research design. He included all the Dalit student of Jajarkot district who are studying at secondary level was the population of the study. For doing that, he chose 21 students from three different school, three teachers were from three different school and six parents were from three different communities for the sample of his study. He used purposive non-random sampling strategies to select the institution and respondents. For data collection he used questionnaire and semi- structured interview as tools. In his study data were analyzed quantitatively and qualitatively. He found that all 100% of the

respondents have positive attitudes towards learning English language. And according to Dalit students the challenges of Dalit student in the classroom were medium of teaching, no attention of teachers, weak base, the practice of cast base, discrimination housework's, poverty, unemployment, landlessness were the causes to economically back be as 100% of the respondents reported.

Many researchers conducted research based on EMI. My research study is also based on EMI, but it consists with parent's attitudes toward EMI. EMI is aroused as global issues, simply in Nepalese community parents are also attracted towards EMI and they pursued to send their children into English language classroom. So, in my research study, Dhankuta district has majority of Bantawa language instead of this parent are attracted towards English language so that my research has gaps then other researcher's work.

### **Implication of the Review for the Study**

Implication of review is concern with the literature review which product new strategies and scientific guidelines for any researcher. After reviewing other articles or literature, I got a chance to cumulate various ways for improving my research problem, so implication of the literature review needs for every researchers's. By observing other's related study, I got a way to remove my research problem, get strong scientific guidelines, data collection procedure and also get chance to learn about research framework.

Kumar (2003) conducted research on entitled "Challenges of using English as a Medium of Instruction in Multilingual Context". This research helped me to get some ideas about the challenges in the EMI courses. Because he found that, sometimes students making an effort frustrates the student instead of facilitating. The maintenance of English may be an easier option with careful adoptions of the bilingual best communication. But the teachers should have the skills necessary for supporting learning through and analytical understanding of language related barriers. So, from his research I got some challenges of using English as a medium of instruction in multilingual context.

Likewise, Dhakal (2016), researched on thesis topic of "English as a Medium of Instruction in the Government Added School". He found that 80% teachers are

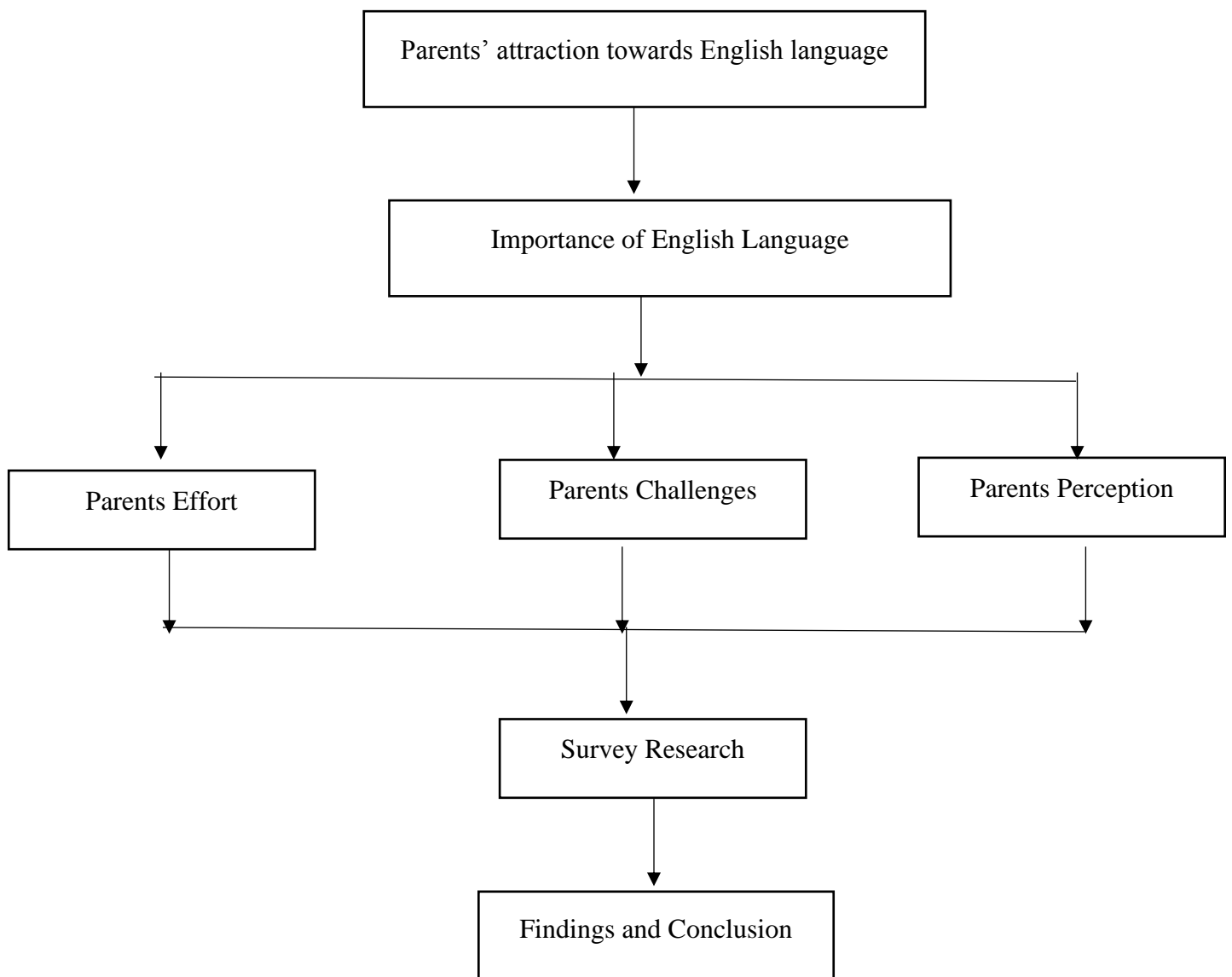
positive towards English medium. However, they have not trained to each-others subjects in English medium. So, his research provides me with the current situation of instruction in the government aided school. And my research is also related to community school. So, his research helps me to prepare objectives and delimitation of my research.

Similarly, Neupane (2017) conducted research on the topic of “Parents Perception on English as the Medium of Instructional in Public School of Nepal. He adopted survey research for find out the information about the parents’ perception towards EMI in public schools of Nepal. All the parents were population for his study. So, from his research I got ideas to choose particular research design and provide statistical guidelines for my research.

In the same way, B.K (2017) conducted research on the topic of “Attitude of Dalit Students Towards Learning the English Language”. From his research he concluded that all 100% of the respondents have positive attitudes towards learning English language. And according to Dalit students the challenges of Dalit students in the classroom were medium of teaching, no attention of teachers, poverty, unemployment, landlessness was the course to be economically back. After reviewing his research, I got ideas about the role of socio- economic status of Dalit students who are learning English language and socio -economic status of Dalit Students.

## Conceptual Framework of the Study

School medium of the instruction is progress within the social requirement. English language demand is increasing in community school therefore, community schools are also trying to adopt English medium classes. Because of, students' parents show their effort to teach their children in English classes. Parents think English medium can deliver quality education so English medium classes' scope is aroused as contemporize issues. For progress the learners' creativeness English language provides various beneficial elements. Parents have various perceptions towards the English medium of instruction, and they are courageous to send their children into English language classroom. While they show the aggressive to send their children into EMI school there occur various problems and challenges within this parents' show effort for teaching their children through English medium. I have a conceptual frame work which can be presented diagrammatically as follows:



### **Chapter 3**

#### **Methodology and Data Collection Procedure**

This chapter adopted some methods and data collection procedures to fulfill my research objectives. In this section there are some sub-topics that are related with research. That sub-topics included data and methods so it made my research study scientific and provided quantitative research. Designs and Method of the research design, it constructed the research study fluent and valid. To develop any research study, there requires design and method and within this there requires data collection procedure.

#### **Design and Method of the Study**

In my research study on 'Parents Attraction towards English Medium Classes' . In this research work I followed the quantitative research design which is based on survey research. Survey research is a technique for social science and education which product the quantitative data for analyzing my research. According to Hutton (1990, as cited in Sapkota, 2012) "Survey research is method of collecting information by asking as a set of per-formulated questions in a predetermined sequence in a structured, questionnaire to a simple to individuals so, as to be representative of the defined population". In survey research design there used questionnaire and interview as the data collection tools instead of these, I used questionnaires for the data collection, Because questionnaires mostly useful for carried out to find the attitudes, beliefs and specific behavior of the people's perception towards some particular phenomena. In my research there I selected the students' parents who are courageous to send their children in to EMI classroom. In my research survey research design was perfect to collect the students' parents' attraction towards the EMI classroom and that data helped to find the perfect evidence to know 'why they are attracted towards English medium classes.

#### **Population, Sample and Sampling Strategy**

The population chose from students' parents whose students are admitted in grade 1 to 6 at Kanyadevi Lower Secondary School. In my research we selected 50 parents as informants. So, my research study population sample related with

Kanyadevi School and that represented all parents, who are attract towards English medium classes.

### **Research Tools**

I used a set of questionnaires as the major tool for data collection from the informants. These questionnaires were structured questionnaire.

### **Source of Data**

Data collection is the main part for any research study, so data was collected from primary sources and secondary sources. These sources were essential for developing research to collect perfect evidence.

### **Data Collection Procedure**

I had used primary and secondary sources for data collation procedures. Primary and secondary sources of data were collected step by step. For collecting secondary data collection, I studied the national policies articles, journals and international information. And for primary data collection I went to Dhankuta district's KanyaDevi Lower secondary school, which is located in hilly area. On the Periphery of this school, there is the majority of Rai (Bantawa) language. In that case, I prepared a set of structure questionnaire with English language. Some of the parents were not understand the questions through the English language so, I translated these questions into Bantawa language. Then I took permission from the students' parents and requested them to participate as population for my research study. After that I distributed questions to the students' parents to answer the questions. Then after, I was success to collect parents' perception. At last, I collected proper information for my research.

### **Data Analysis and Interpretation Procedures**

While the data collection was successful then after, I analyzed this information by using descriptive and statistical tools I.e., percentages and tables.



**Ethical Consideration**

Research should be scientific and valid within this while started to research, there we should be follow ethical consideration of our population. So, I maintained the ethic and respect any information. In my research study there included the majority of Rai communities' people. They might have some privacy at that period I respected their Information and their social phenomenal events. I respected their interest, physical, psychological, and social values. I developed the participants' confidence to answer of questionnaires then distribute questions to them. Without the participant's interest, I would not be forced to answer my questions, because I always respected people's rights and dignity.

## **Chapter 4**

### **Analysis and Interpretation of Results**

In this chapter, the analysis and interpretation of which were collected from the sample. The raw data were analyzed and interpreted from quantitatively and qualitatively. On the basis of their nature, the quantitative data were analyzed and interpreted from descriptively. Contrary to it, the quantitative data were analyzed and interpreted using simple statistical tools such as measures of frequency and percentile. The researcher has presented the data in frequency tabulation, cross tabulation and diagrams as per their nature and need.

#### **Analysis of Data Collection through Questionnaire**

In this section there selected 50 parents who sent their children in English medium classes. These parents were given a set of questionnaires, in order to find out the reason of attractions towards the English Medium. And then, those collected data were analyzed and interpreted. Therefore, the following section consists of the analysis of the data that was found in my study.

**Important of English language.** This section is concerned with the roles of English language. So, for attract the parents' perception towards English language, it presents important of English language. Hence, in order to find out the parents thought about the important of English medium, there gave some statements and asked parents are agree undecided or disagree for these statements. The statements and the responses are given in the facing page.

**Table 1**

Important of English language	Numbers of response on each question	Percentage of response on each question				
		U	D	A	U	D
Learning English offer different personality to children.	20	12	18	40%	24%	36%
English has become internationally recognize language.	35	10	5	70%	20%	10%
English language provided quality education.	40	5	5	80%	10%	10%
English language increases students' professional capacity.	15	25	10	30%	50%	20%
English motives learner to acquire worldwide knowledge.	12	17	21	24%	34%	42%
It provides high position in society.	42	3	5	84%	6%	10%

This table 1 shows that out of 50 students' parents 20(40%) parents agreed, 12(24%) parents undecided and 18(36%) students' parents were disagree with the statements that leaning English offer different personality to children.

Similarly, table 1 also shows that out of 50students parents 35(70%) parents agreed, 10(20%) are undecided and 5(10%) are disagree with the statements that English has become internationally, recognize language.

Next, out of 50 students' parents 35(70%) parents agreed, 5(10%) Parents undecided and 5(10%) parents disagreed with the statements of English has capacity for mobilize economic.

Simply, out of 50 students' parents 15(30%) parents agreed, 25(50%) are undecided and 10(20%) parents are disagreed with the statements of English language provide quality education.

Additionally, in the table 1 out of 50 students' parents 15(30%) parents agreed, 25(50%) parents are undecided and 10(20%) parents are disagreed with the statements of English language increase students' professional capacity.

Similarly, in the same table 1 out of 50 students' parents 12(24%) parents agreed 17(34%) parents were undecided, and 21(42%) Parents were disagreed with the statement of English motives learner to acquire world wide knowledge.

Next statement is also added in table 1. Out of 50 students' parents 42(84%) parents agreed, 3(6%) parents were uncertain, and 5(10%) parents disagreed with the statements of it provides high position in society.

Majority of the parents were accepted that English is important for their children education field. Parents thought English language provide the quality education, so it develops the children career. English language had capacity to increase the student's capacity and develop the high positioning in society.

**Parents challenges** This section is based on the challenges of parents to send their children into EMI classroom. In my research area there have majority of Bantawa language community in that causes there occur various challenges for accepting English language. Hence, in order to find out the students' parents challenges there distribute some statements and collect the data by asking parents are agree, undecided or disagree. These statements are given below in table 2 with percentages.

**Table 2**

Parents challenges	Numbers of responses on each question				Percentages of Response on each question		
		Agree	Undecided	Disagree	Agree	Undecided	Disagree
English language dominated social recognition	12	24	14	24%	48%	28%	
Learning English language is costly	45	3	2	90%	6%	4%	
Parents have difficult to save Nepalese culture.	33	10	7	66%	20%	14%	
Parents mission is to empower their children towards EMI Classroom.	15	21	14	30%	42%	28%	
Involvement in school's program is challenges	40	5	5	80%	10%	10%	
Parents have to maintain costly materials for their children.	35	8	7	70%	16%	14%	
Parents build good communication with their children.	45	3	2	90%	6%	4%	

This table 2 shows that out of 50 students' parents 12 (24%) parents agreed, 24(48%) parents undecided and 14(28%) students' parents disagreed with the statements of English language dominate social recognition.

Similarly, this table 2 represents that out of 50 students' parents 45(90%) agreed, 3(6%) undecided and 2(4%) disagreed with the statements of learning English language is costly.

In next statement, in the table 2 shows out of 50 students' parents 33(66%) agreed, 10(20%) undecided and 7(14%) students' parents were disagreed with the statement of parents have difficult to Nepalese culture.

Additionally, this table 2 shows out of 50 students' parents 15(30%) agreed, 21(42%) undecided and 14(28%) disagreed with the statement of parents' mission is to empower their children.

Likewise, in that table 2 shows out of 50 students' parent 40(80%) agree, 5(10%) undecided and 5(10%) disagreed with the statement of involvement in school's program is challenging.

Similarly, in the same table shows, out of 50 students' parents 35(70%) agreed, 8(16%) undecided and 7(14%) disagreed with the statement of parents had to maintain costly materials for their children.

In the same table 2 present, out of 50 students' parents 45(90%) agreed, 3(6%) undecided and 2(4%) disagreed with the statement of parents build good communication with their children.

Teaching and learning through foreign language are such a challenging job. Instead of this, students' parents were showed curiousness towards English medium. Parents have the desire to send their children to EMI classroom, but they have faced various challenges. Adopting English language product some challenges, these are English language dominates social recognition, parents had difficult to maintain costly instructional materials for their children and parents had difficult to communicate with their children through English language.

**Parents efforts on Children Education.** This section is based on parents' effort on children education. Parents are first guidance. They always be worried to develop their children future so in this section there asked some statements related to parents' effort on children education basically in English medium. In this statement there asked parents are agree, undecided or disagree on the statement to collect the data. Parents responses are showing in table 3 with number and percentage. There included 50 parents.

**Table 3**

Parents effort on children education	Number of responses on each question			Percentages of responses on each question		
	Agree	Undecided	Disagree	Agree	Undecided	Disagree
You have desire to send your children in EMI	33	10	7	66%	20%	14%
You provide motivation to your children	45	3	2	90%	3%	2%
You focus on your children interest	30	12	8	60%	24%	16%
You provide extra time for your children to do their favourite activities.	15	15	20	30%	30%	40%
Parents should copy children to error for develop their students.	5	23	22	10%	64%	44%
You always encouraging your child to speak English	13	32	5	26%	64%	10%
You don't mind to taking risk for your students' education.	42	3	5	84%	6%	10%

This table 3 shows that out of 50 students' parents 33(66%) agreed, 10(20%) undecided and 7(14%) disagreed with the statement of you have desire to send your children in EMI classroom.

Similarly, this table 3 shows that out of 50 students' parents 45(90%) agreed, 3(6%) undecided and 2(4%) disagreed with the statement of you provide motivation to your students.

In next statement shows that table 3, out of 50 students' parents 30(60%) agreed, 12(24%) undecided and 8(16%) disagreed with the statement of you focus on your child interest.

Additionally, in the table 3 shows that out of 50 students' parents 15(30%) agreed, 15(30%) undecided and 20(40%) disagreed with the statement of you provide extra time for your children to do their favourite activities.

Likewise, table 3 also shows that out of 50 students' parents 5(10%) agreed, 23(46%) undecided and 22(44%) disagreed with the statement of parents should copy children to errors for develop their students.

Similarly, in next statement showed that out of 50 students' parents 13(26%) agreed, 32(64%) undecided and 5(10%) disagreed with the statement of you don't mind to taking risk for your students.

Other statements that mention in table 3 shows that out of 50 students' parents 42(84%) agreed, 3(6%) undecided and 5(10%) disagreed with the statement of you don't mind to taking risk for your students.

Parents are courageous towards the English language, and they sent their children in to EMI classroom. To fulfill their desire, they have to maintain various challenges and effort. Similarly, parents had to provide motivation to their children, parents should focus on children's interest, and parents should maintain extra time for their children to use English language at home.

**EMI Provide Quality Education.** EMI is being implemented in the public school. This study found out the several reasons for it. The respondents were provided with the options as well as they were asked to response the multiple options. Let's



consider the following data for collect the students' parents thought about EMI provides the quality education in school.

**Table 4**  
**EMI provide quality education**

Response	No. Of respondents	Percentages
Strongly agree	31	62%
Agree	15	30%
Uncertain	2	4%
Disagree	2	4%

Regarding this, as the data said that majority of the respondents (i.e. 62%) were strongly agreed, that EMI provided quality educations. And 30% of the respondents were agreed on it. In the same way 4% and next 4% were uncertain and disagreed respectively. Out of 50(100%) students' parents 4% were uncertain and 4% were disagreed to accept this statement of English medium of instruction provide quality education.

Majority of the parents thought English language is best option for quality education. Most of the parents were strongly agreed that English language provide quality education, so they loved to send their children in EMI classroom.

**English language develops children career.** English language is become international language. Now a days without English language there occur very challenges to understand the world and children career. If the parents don't help to children education their future will be effect. Regarding the parents thought following responds were collected that showed in table no.4.

**Table 5**  
**English language developed children career**

Response	No of response	Percentages
Strongly agree	9	18%
Agree	28	36%
Uncertain	6	12%
Disagree	7	14%

Regarding the English language develop the children career, 18% respondents were strongly agreed, whereas 36% of the respondents were agreed on this statement. And 12% respondents were agreed on this statement, whereas 14% of the responses were found to be disagree for this statement.

Out of 50 students' parents 28 (36%) of parents were agreed that English language develop their children's career. If their children were adopting English language, then they would get best way to make their future bright.

**English Medium of Instruction can deliver the proper knowledge.** Delivering information always carry knowledge. To understanding the students' parents' concept about EMI, there asked a question as English medium of instruction can deliver the proper knowledge to your children. Most of the parents are attracted towards EMI so table number 5 shows that parents responses.

**Table 6**

**English medium of instruction can deliver the proper knowledge**

Responses	No. of responses	Percentages
Strongly agree	10	20%
Agree	13%	26%
Uncertain	15%	30%
Disagree	17	24%

Regarding this, as the data said that majority of respondents (30%) were uncertain that EMI can deliver the proper knowledge, 26% of the respondent were agree. Whereas 24% of the parents were disagree and 20% of responses were strongly agree with the statement of English medium of instruction can deliver the proper knowledge.

English language covered the new technology and instrument that way English language is become necessary for every people. Instead of this, there are other supplementary option so that 30% of the parents were uncertain with the statement of English medium of instruction can deliver the proper knowledge.

## Summary of Findings

This section is concerned with the major findings of the study. It was found that, learning English offer different personality to children as 20(40%) students' parents agreed with that statement. In the same way, 35(70%) students' parents agreed that English has become internationally recognize language, so they are attracted to send their children into EMI classes. Likewise, English has capacity for mobilize economic strategy. In this statement 35(70%) of the students' parents were agreed. Similarly, it was found that out of 50 students' parents 40(80%) parents agreed with the statement that English language provided quality education. In the same way, 25(50%) students' parents were uncertain on the statement of English language increase students' professional capacity.

Likewise, English motivates learner to acquire worldwide knowledge. In this statement 21(42%) students' parents were disagreed. Similarly, it was found that out of 50 students' parents 40(80%) parents were agree with the statement that English provides high position in society. Likewise, that finding showed that 24(48%) of students' parents were uncertain on the statement of English language dominate social recognition. In the same way it was found that out of 50 students' parents 45(90%) of parents were agreed with learning English language is costly. Similarly, 40(80%) students' parents agreed with involvement in school's program is challenges. Additionally, finding data showed, out of 50 parents 35(70%) of students' parents agreed to maintain costly teaching materials for their children. Similarly, this data found that 45(90%) parents built good communication with their children. In the finding 33(66%) students' parents agreed to fulfil desire to send their children in EMI classroom. Likewise, 45(90%) of students' parents agreed to provide motivation to their children. In the same way out of 50 students' parents agreed to focus on their children interest. Similarly, 23(46%) students' parents disagreed to copy children's error for develop their students' English language. Likewise, 32(64%) students' parents agreed to encourage their child to speak English. Similarly, out of 50 students' parents did not mind to taking risk for their students' education.

In the same way 31(62%) of the students' parents strongly agreed that EMI provided quality Education. Likewise, the majority of respondents, 30%, were uncertain that EMI can deliver the proper knowledge. Regarding the English language

develop the children career whereas 36% of students' parents respondents were agreed. Out of 50 students' parents, 30% of the parents were uncertain to towards on the statement of medium of instruction can deliver the proper knowledge to their children.

Majority of the parents were agreed that English language is important for their children. English language produced the quality education, and it developed the children's career. Within this parent faced various challenges and make effort to acquire children bright future.

## Chapter 5

### Conclusion and Implication of the study

This chapter presents the research's conclusions and findings of the study. That was done from the close analysis of the collected data and it was recommendations on the different areas.

#### Conclusions

English medium of instructions has different benefits parents were attracted towards EMI classroom, so they send their children in to English Education. The present study was carried out with the objectives in order to find out the parents' attraction towards English medium classes and to explore current issues of EMI. Therefore, in order to meet the objectives of the studies' the researcher collected data by using survey research design as a research methodology and data were inquiry through questionnaire. In the study 50 students' parents were sampled for data collection.

The study found that learning English offer different personality to children as 20(40%) parents agreed with that statement. Similarly, findings showed that out of 50 parents 35(70%) parents agreed with the statement that learning English is important in order to English has become internationally recognized language. Likewise, English language provided quality education. In this statement 40(80%) of students' parents agreed. In the same way on important of English language 35(70%) parents thought English has capacity for mobilize economy. In the same way it was found parents challenges beside these challenges' parents were ready to send their children in to EMI Classroom. Likewise, that finding showed that 24(48%) of students' parents were uncertain on the statement of English language dominate social recognition. In the same way it was found that out of 50 parents 45(90%) of parents were agreed with learning English language is costly. Similarly, 40(80%) parents agreed with involvement in school's program is challenges.

Additionally, finding data showed, out of 50 parents 35(70%) of students' parents agreed to maintain costly teaching materials for their children. In the finding 33(66%) parents agreed to fulfil desire to send their children in EMI classroom. Likewise, 45(90%) of parents agreed to provide motivation to their

children. In the same way out of 50 students' parents agreed to focus on their children interest. Similarly, 23(46%) parents disagreed to copy children's error for develop their students' English language. Likewise, 32(64%) parents agreed to encourage their child to speak English. In the same way 31(62%) of the parents strongly agreed that EMI provided quality Education. Likewise, the majority of respondents, 30%, were uncertain that EMI can deliver the proper knowledge. Regarding the English language develop the children career whereas 36% of parent's respondents were agreed. Finally, parents are the first way taker to develop their student's education.

### **Implication of the Study**

The findings of this research work as summary and the gist as conclusion will be utilized in the section. The following section suggests the parents' perception.

**Policy related.** After drawing conclusion from the findings of the study, some policy related suggestion has been made in order to draw the attention of the policy makers on the problems. The foremost needs for instruction medium are English which attracted the students' parents thought. English language become international language. Parents thought, English is best medium for instruction to their children. Consequently, teaching through English language is challenging. There should be good relationship between parents and their children. Within this the policy makers should be conscious regarding new technology and friendly teaching. School administration should create English environment in the school and cooperate with the parents.

### **Practice related**

- Parents should understand their children's needs and interest about instruction.
- Similarly, students' parents should know the alternative way because within their children interest there must have other option for instruction medium.

**Further Research related.** This research work has further research related importance:

- The further research can conduct research work on the issues like parents' attraction towards EMI classes and they have to face various challenges.
- This research study is based on the secondary level students 'parents' attraction towards EMI from Dhankuta district, so other researcher can conduct research work at other levels and topic.

## References

- B. K, P.B. (2017). *Attitudes of Dalit students towards learning the English language* (unpublished master's thesis). Tribhuvan University, English Education Department, Kirtipur.
- Bhusal, D. (2017). *Implementation of English as a medium of instruction: Non-English teachers' perfection* (unpublished master's thesis). Tribhuvan University, English Education Department, Kirtipur.
- Dhakal, R. (2016). *English as a medium of instruction (EMI) in the government aided school: Teachers' perception and the use* (Unpublished master's thesis) Tribhuvan University, English Education Department, Kirtipur.
- Diwakar, P. (2013). *English medium education. An individual and national need.*  
<http://Diwablogssopt.com>
- Epstein, J. (1995). *School, family, community partnerships: Caring for the children*, 77(9), 701-712.
- Giri, R.J. (2015). The many faces of English in Nepal. *Asian English*, 17(2),94-115.
- Graddol, D. (2004). *The future of language*. London: The British Council.
- Karchu, (1995). *Standard, codification and sociolinguistic realism: The English language in outer circle*. Cambridge University Press in Association with British Council.
- Karunakaran, T. (2011). *Reintroduction of English as medium of instruction of Srilanka*. ELT weekly, vol.3.
- Khatri, D.K. (2016). *Parents' and students' perception on the importance of teaching and learning English*. Master's thesis. Tribhuvan University, English Education Department, Kirtipur, Kathmandu.
- Kumar, R. (2008). *Challenges of using English as a medium of instruction in multilingual context*. Research article: India Press.



- Mahboob, A. (2017). English Medium instruction in Higher education in Pakistan: Polies perceptions, problems, and possibilities. In Walkinsah, I., Fenton - Smith, B. and Humphreys, P. (Eds) *English as a Medium of Instruction in Higher education in Asia-Pacific: Issues and Challenges*(pp.71-92). London: Springer.
- Neupane, M.P. (2017). *Parent's perception on English as the medium of instruction in public schools of Nepal* (unpublished master's thesis). Tribhuvan University. Education Department, Kritipur, Kathmandu.
- Rogir, D. (2012). *The effect of English-medium instruction on language proficiency of students enrolled in higher education in the use*. The University of Exeter, Doctor of Education in TESOL.
- Salem, M. (2011). *The classroom problems faced by teachers at public schools Tafilaprovence and purposed solution*: Talifa Jordan.
- Sha, K, P &Li, G. (2018). English medium Instruction (EMI) as linguistic Capital in Nepal: Promises and Realities. *International Multilingual Research Journal*, <https://www.tandfonline.com/loi/hmrj20>.
- Shrestha, K.S. (2021). *Pedagogical experiences of classroom teachers in English as a medium of instruction*. Tribhuvan University, English Education Department, TU, Kirtipur.
- Swap, S.M. (1993). *Developing home school partnership*. New York: Teachers Collage Press.

## Appendix

### Questionnaire

Dear parents,

This questionnaire is research tool for getting information for my research entitled **Parents Attraction Towards English Medium Classes in Community Schools** under this supervision of **Dr. Gopal Prasad Pandey**, Reader and head department of English Education TU. Kirtipur. Your co-operation in responding the questionnaire and your responses will have a great value in accomplishing my research work. Therefore, I appreciate your perception and at the same time I assure you that your response will be completely anonymous, please feel free to put your responses as required by the questionnaire, I honestly assure you that the responses made by you will be used only for the present study and remain confidential.

Researcher

**Dipa Rai**

## Participant 1

### Personal detail

**Students' parents name:** khunchhama Rai

**Address:** Sahidbhumi-4, Dhankuta

	Numbers of responses each question		
	A	U	D
Learning English offer different personality to children	✓		
English has become internationally recognize language	✓		
English has capacity for mobilize economic	✓		
English language provided quality education	✓		
English language motivates learners to acquire worldwide knowledge.			✓
English language increases student's professional capacity	✓		
It provides high position in society	✓		

**Questions based on challenges of parents to send their children into EMI classroom.**

	Numbers of response		
	Agree	Uncertain	Disagree
English language dominates social recognition	✓		
Learning English language is costly	✓		
Parents have difficult to save Nepalese culture.	✓		
Parents mission is to empower their children towards EMI	✓		
Involvement in school's program is challenges		✓	
Parents must maintain costly materials for their children	✓		
Parents build good communication with their children.			✓

### Questions based on parent's effort on child education

	Numbers of responses		
	Agree	Uncertain	Disagree
You have desire to send your children in EMI	✓		
You provide motivation to your children	✓		
You focus on your children interest		✓	
You provide extra time for your children to do their favourite activities.	✓		
Parents should copy children to error for develop their students	✓		
You always encouraging your child to speak English	✓		
You don't mind to taking risk for your students' educations.	✓		

**Part II: Questions pertaining to the parents' perceptions towards the child education through EMI.**

- 1) English medium of instruction provides the quality Education from school.  
A) Strongly Agree B) Agree C) uncertain D) disagree
- 2) English is only one language to develop your children career.  
A) Strongly Agree B) Agree C) uncertain D) disagree
- 3) Medium of instruction can deliver the proper knowledge to your children.  
A) Strongly Agree B) Agree C) uncertain D) disagree
- 4) English medium of instruction creates financial problems in your home.  
A) Strongly Agree B) Agree C) uncertain D) disagree

## Participant 2

### Personal detail

Students' parents name: khim hang Rai

Address: Sahidbhumu-4, Dhankuta

	Numbers of responses each question		
	A	U	D
Learning English offer different personality to children	✓		
English has become internationally recognize language	✓		
English has capacity for mobilize economic	✓		
English language provided quality education	✓		
English language motivates learners to acquire worldwide knowledge.		✓	
English language increases student's professional capacity	✓		
It provides high position in society	✓		

**Questions based on challenges of parents to send their children into EMI classroom.**

	Numbers of response		
	Agree	Uncertain	Disagree
English language dominates social recognition	✓		
Learning English language is costly	✓		
Parents have difficult to save Nepalese culture.	✓		
Parents mission is to empower their children towards EMI	✓		
Involvement in school's program is challenges		✓	
Parents have to maintain costly materials for their children	✓		
Parents build good communication with their children.			✓



### Questions based on parent's effort on child education

	Numbers of responses		
	Agree	Uncertain	Disagree
You have desire to send your children in EMI	✓		
You provide motivation to your children	✓		
You focus on your children interest			✓
You provide extra time for your children to do their favourite activities.	✓		
Parents should copy children to error for develop their students			✓
You always encouraging your child to speak English		✓	
You don't mind to taking risk for your students' educations.	✓		

### Part II: Questions pertaining to the parents' perceptions towards the child education through EMI.

- 1) English medium of instruction provides the quality Education from school.  
A) Strongly Agree B) Agree C) uncertain D) disagree
- 2) English is only one language to develop your children career.  
A) Strongly Agree B) Agree C) uncertain D) disagree
- 3) Medium of instruction can deliver the proper knowledge to your children.  
A) Strongly Agree B) Agree C) uncertain D) disagree
- 4) English medium of instruction creates financial problems in your home.  
A) Strongly Agree B) Agree C) uncertain D) disagree

### Participant 3

#### Personal detail

Students' parents name: Lungma Rai

Address: Sahidbhumi-4, Dhankuta

	Numbers of responses each question		
	A	U	D
Learning English offer different personality to children	✓		
English has become internationally recognize language	✓		
English has capacity for mobilize economic		✓	
English language provided quality education	✓		
English language motivates learners to acquire worldwide knowledge.	✓		
English language increases student's professional capacity	✓		
It provides high position in society		✓	

**Questions based on challenges of parents to send their children into EMI classroom.**

	Numbers of response		
	Agree	Uncertain	Disagree
English language dominates social recognition			✓
Learning English language is costly	✓		
Parents have difficult to save Nepalese culture.	✓		
Parents mission is to empower their children towards EMI	✓		
Involvement in school's program is challenges		✓	
Parents have to maintain costly materials for their children			✓
Parents build good communication with their children.			✓

**Questions based on parent's effort on child education**

	Numbers of responses		
	Agree	Uncertain	Disagree
You have desire to send your children in EMI	✓		
You provide motivation to your children	✓		
You focus on your children interest		✓	
You provide extra time for your children to do their favourite activities.	✓		
Parents should copy children to error for develop their students	✓		
You always encouraging your child to speak English	✓		
You don't mind to taking risk for your students' educations.	✓		

**Part II: Questions pertaining to the parents' perceptions towards the child education through EMI.**

- 1) English medium of instruction provides the quality Education from school.  
A) Strongly Agree B) Agree C) uncertain D) disagree
- 2) English is only one language to develop your children career.  
A) Strongly Agree B) Agree C) uncertain D) disagree
- 3) Medium of instruction can deliver the proper knowledge to your children.  
A) Strongly Agree B) Agree C) uncertain D) disagree
- 4) English medium of instruction creates financial problems in your home.  
A) Strongly Agree B) Agree C) uncertain D) disagree