

Total cases of HIV/AIDS patients

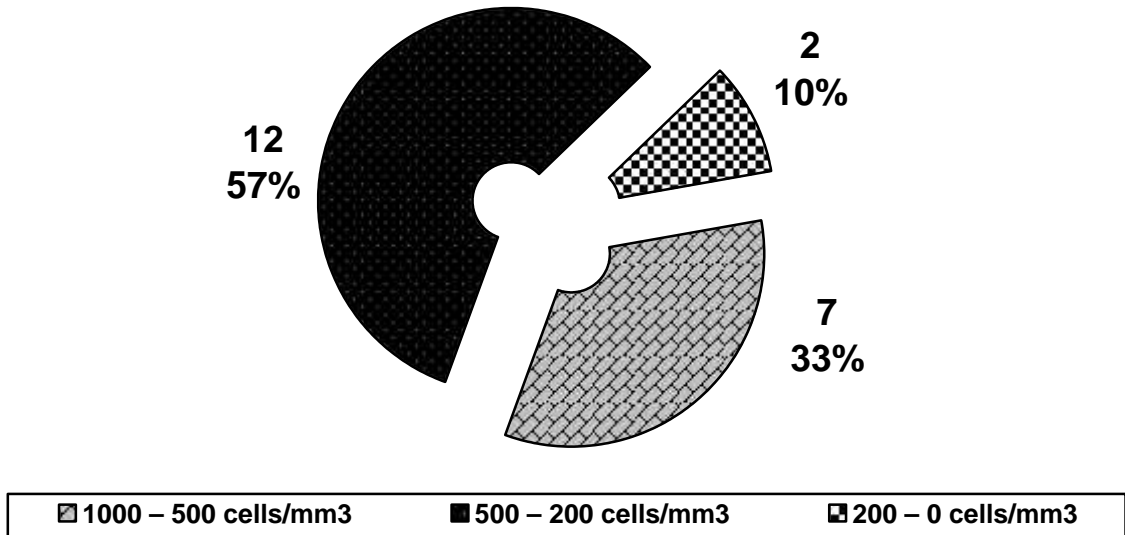


Figure 1: Total cases of HIV infection with relation to T-cell with CD4 marker count

Body mass index

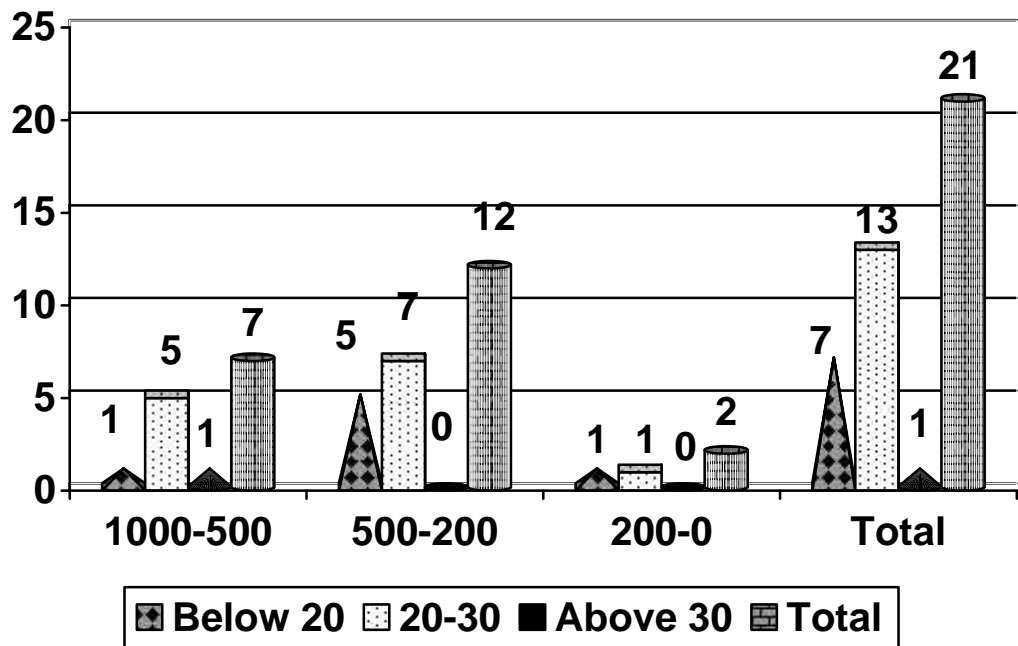


Figure 2: Body mass index with reference to CD4 cells count.

Organisms isolated from blood

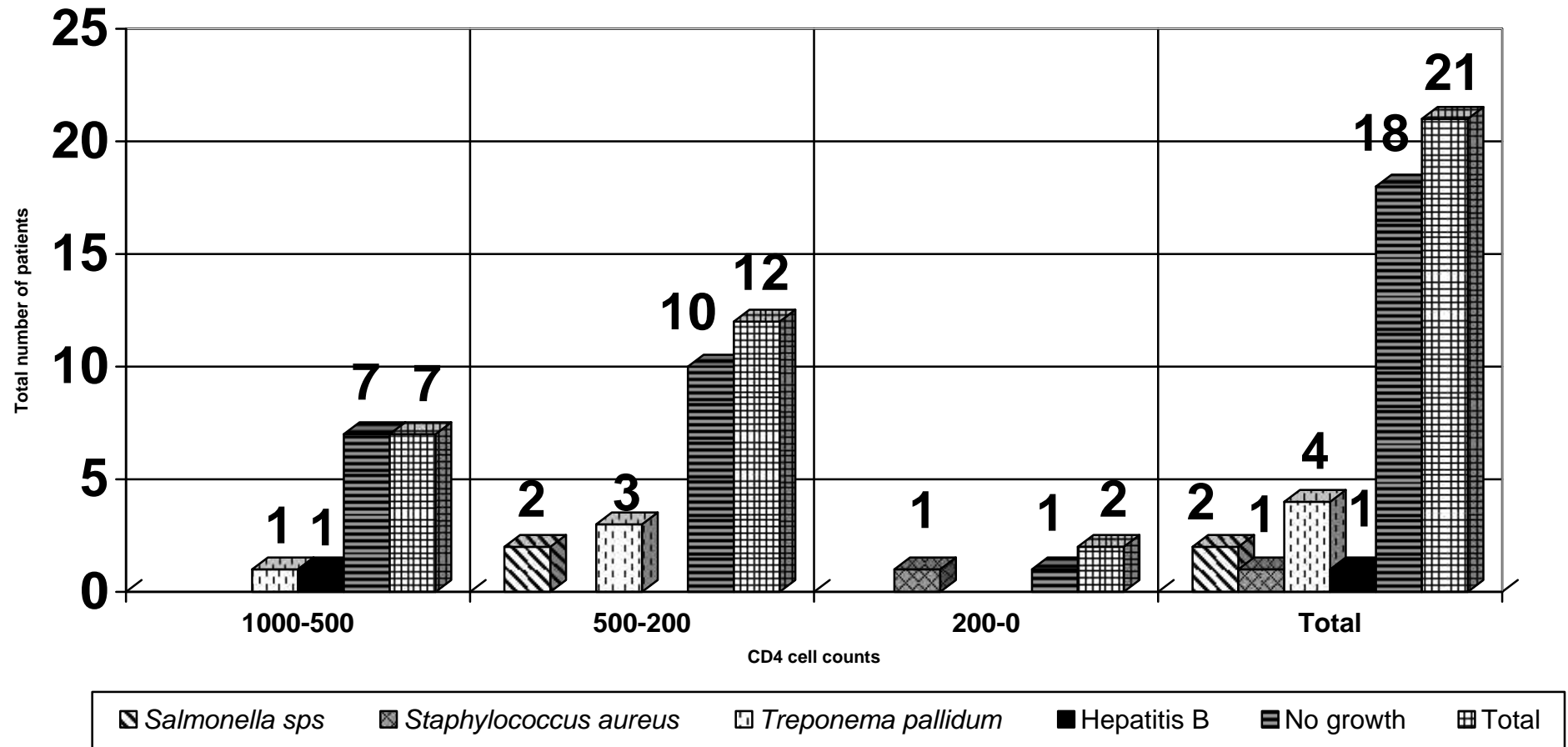


Figure 3: Organisms isolated from blood with relation to CD4 cells count.

Organisms isolated from throat swab

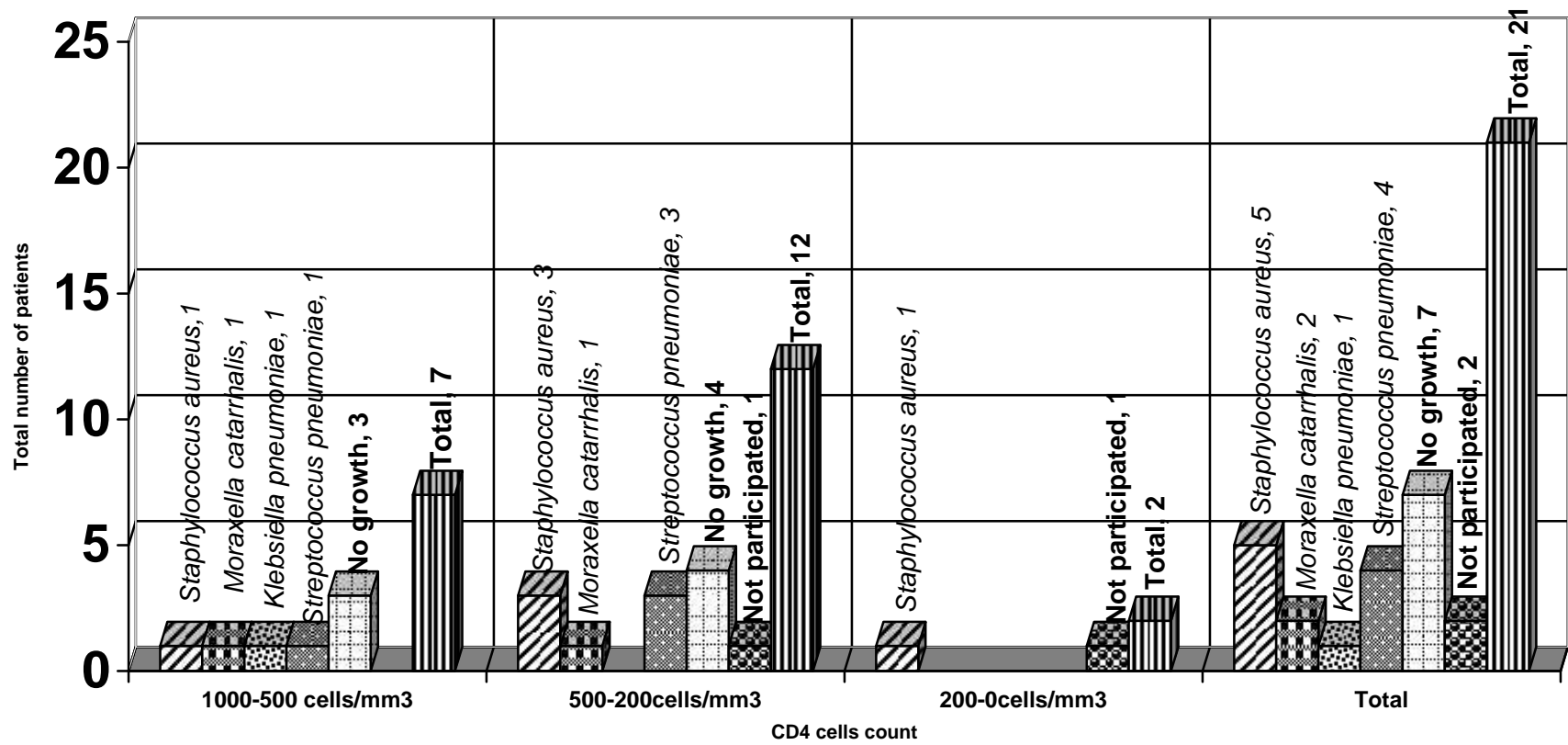
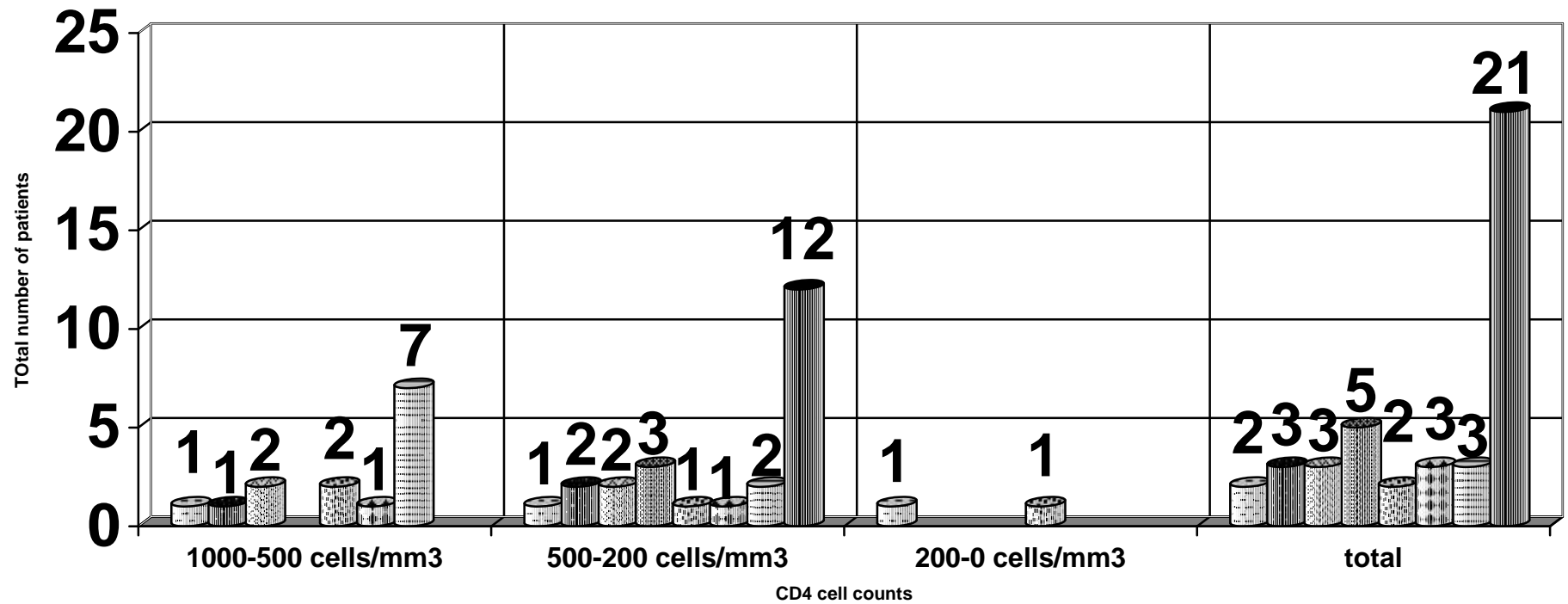


Figure 4: Organisms isolated from throat swab with relation to CD4 cells count.

Organism isolated from Sputum



Staphylococcus aureus
 Haemophilus influenzae
 Klebsiella pneumoniae
 Streptococcus pneumoniae
 Mycobacterium tuberculosis
 Pseudomonas aeruginosa
 No growth
 total

Figure 5: Organism isolated from sputum with relation to CD4 cell count

Protozoa isolated from stool sample

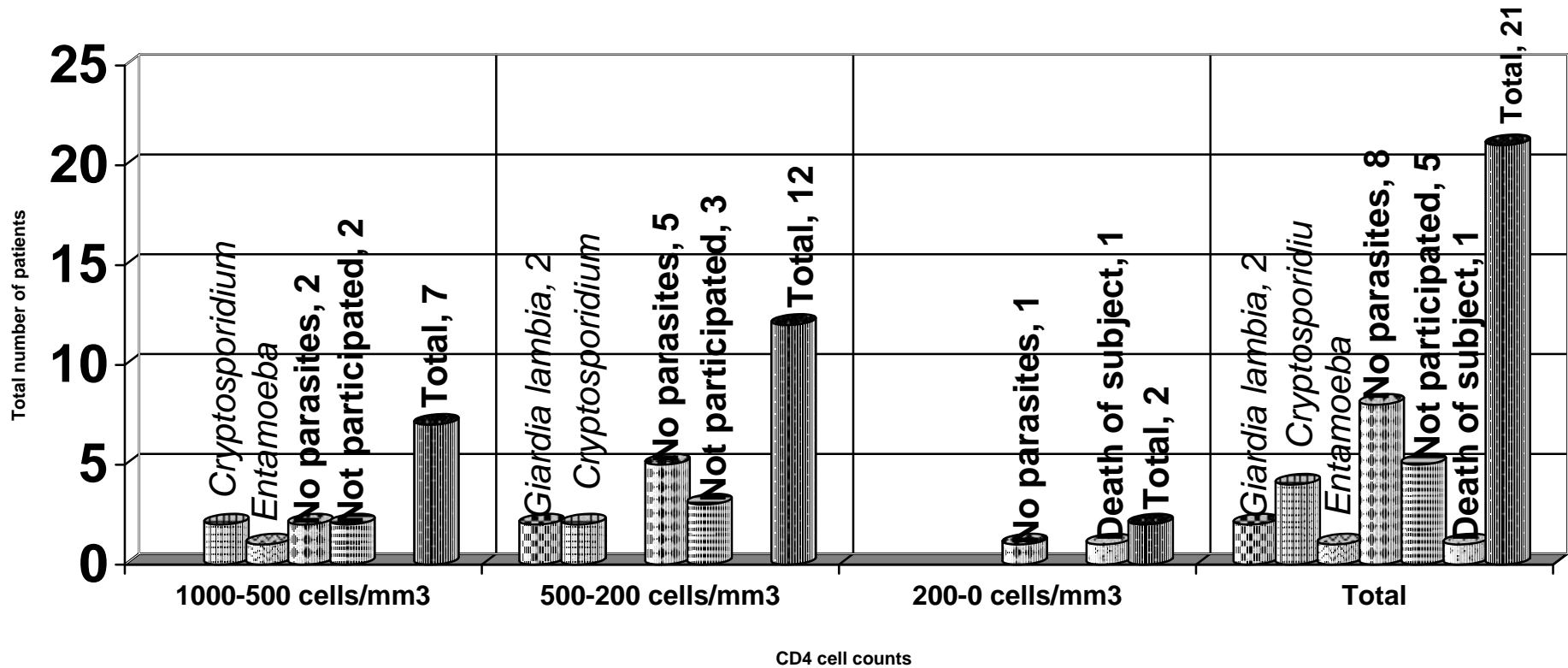


Figure 6: Protozoa isolated from stool samples with relation to CD4 cell counts.

Bacteriological examination of stool

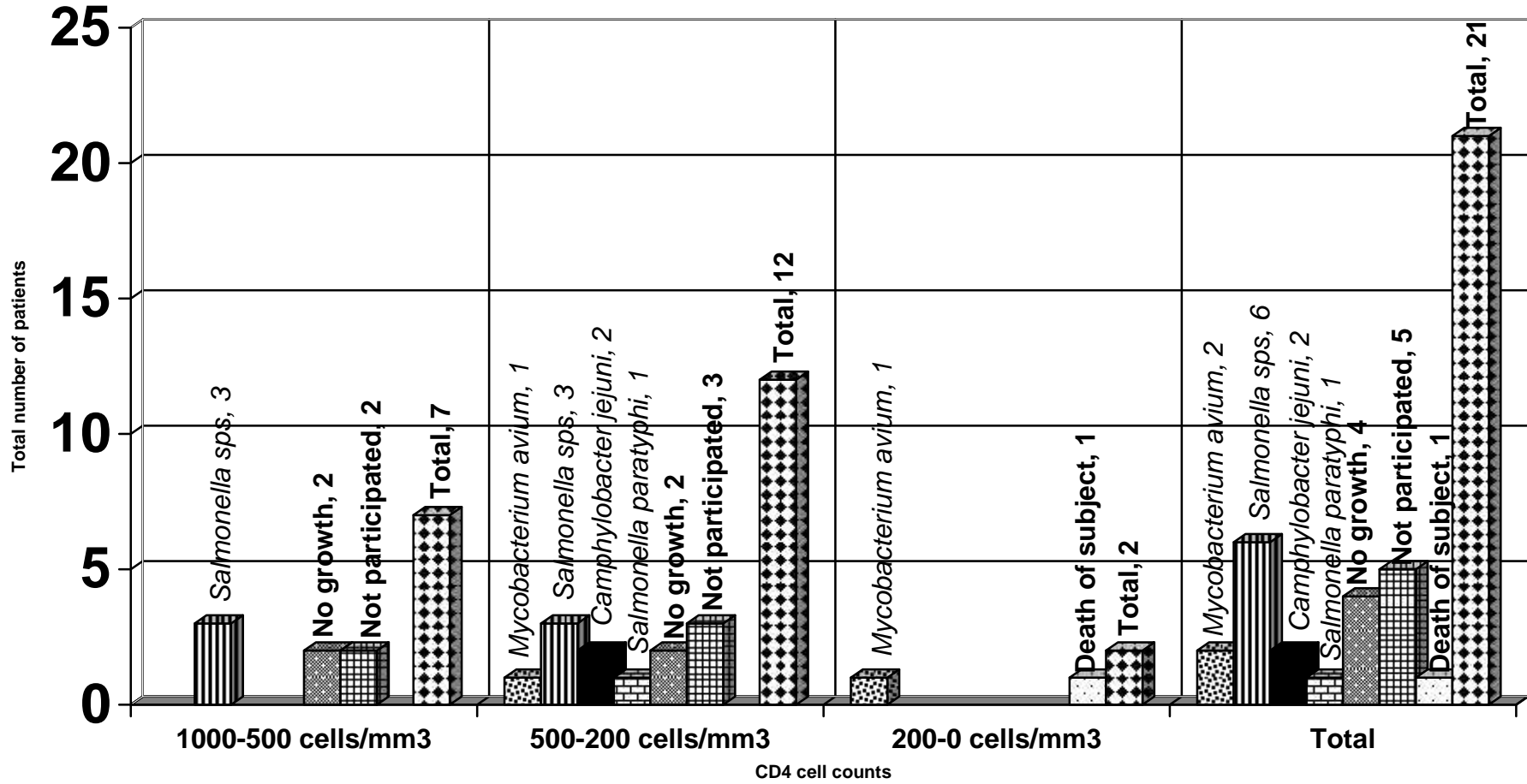


Figure 6: Bacteriological examination of stool with relation to CD4 cell counts.

Organisms isolated from urine

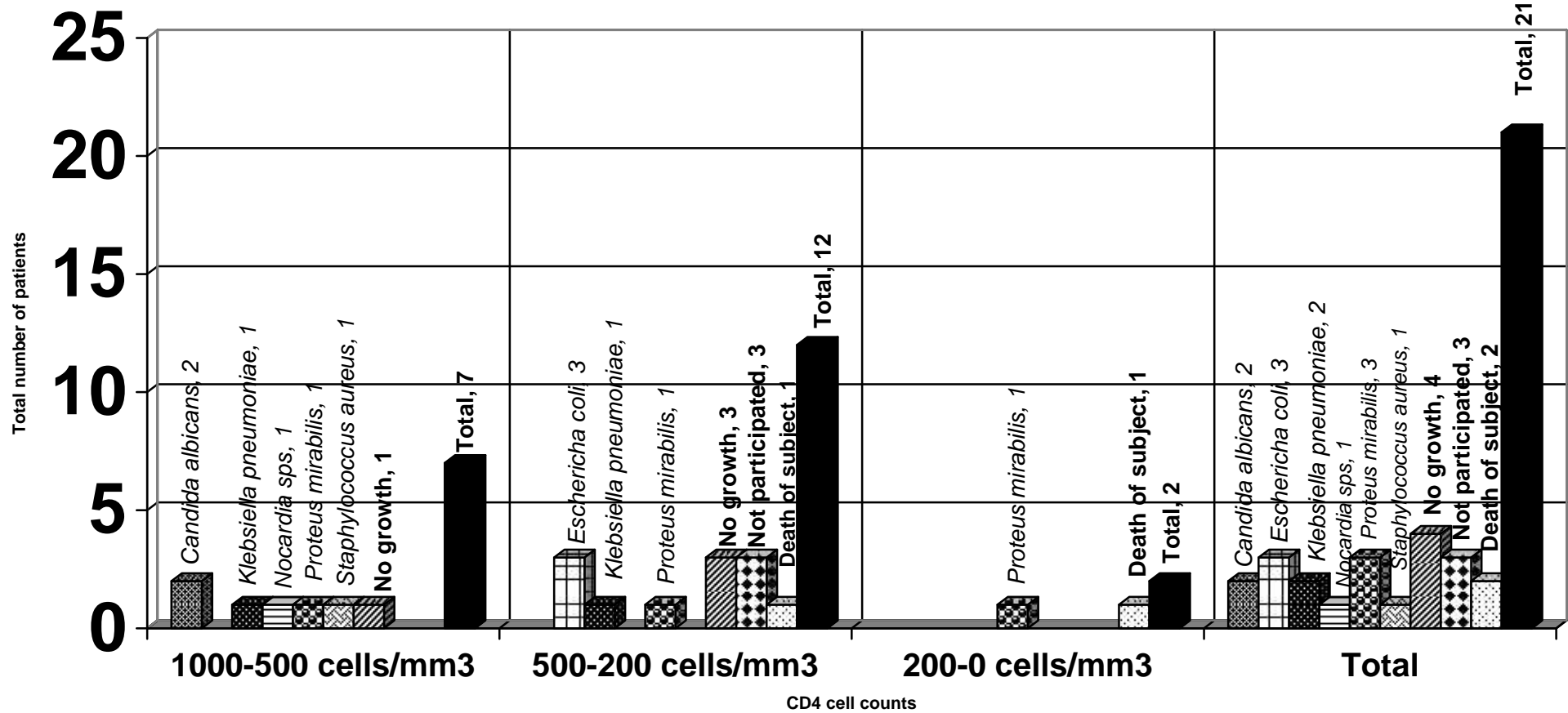


Figure 8: Organisms isolated from urine sample with relation to CD4 cell counts